

1920

THE



OWL

Stella Grinstead

The Owl



1892

The Owl

The Owl Staff
1920

The Owl

The Owl
1920



Missouri Wesleyan College
Annual

The Owl

DEDICATION

To you, Dean Jones, we dedicate this volume—and you are worthy! We appreciate what you are and what you do. Your cordial smile and friendly greeting, wherever you meet us, in the school or on the street, make us glad. Your sincerity and earnestness appeal to us. Your clean cut manhood impresses us. Your example and Christ-like character inspire us to nobler heights of life and thought.



LESTER M. JONES

PHOTO BY A. S. BROWN, CAMERON, MO.

The Owl

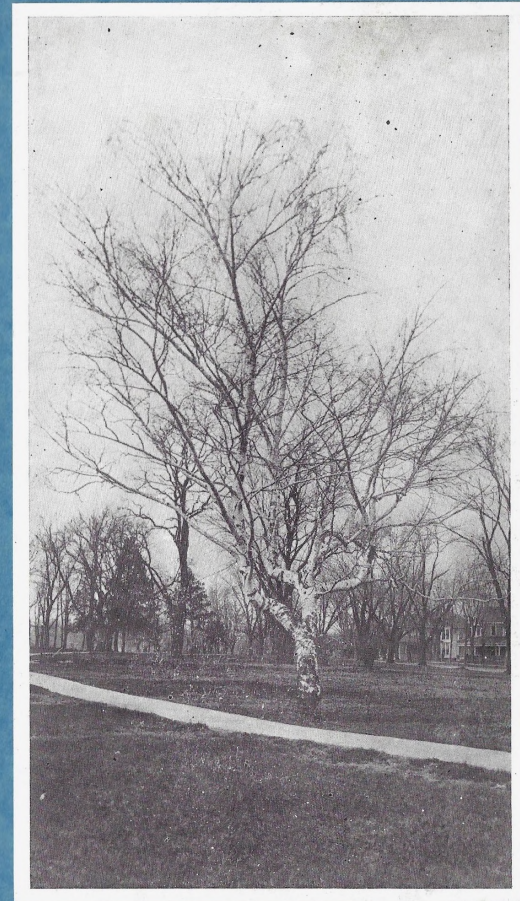
FOREWORD

Once more as the commencement time approaches, the Junior Class presents the 1920 Owl, wherein the devotees of Wesleyan may find in picture and story the activities of the college year 1919-20. To the alumni may the book rekindle the pride for their alma mater, to the present students may it commemorate a great year in school history, and to the friends of the institution may it depict the fruits of their unstinted support.

The Owl

Order of Books

ONE	-	-	-	COLLEGE
TWO	-	ACADEMY, MUSIC AND		SPECIAL DEPARTMENTS
THREE	-	ORGANIZATIONS		
FOUR	-	-	ATHLETICS	
FIVE	-	-	STUDENT LIFE	



BOOK ONE
COLLEGE

The Owl

FACULTY



The Owl



CAMERON HARMON, A. B., D. D.
President

*"Oh! Yes—There is to be a football game
this afternoon."*

The Owl



LESTER M. JONES, A. B., A. M., B. D.
Dean of College.
Professor of Social Science.

*"I am sure no student would intentionally
break any rule."*

ISAAC S. CORN, A. B., A. M., B. D.
Professor of Bible and Philosophy.

*"Between you and me, there are very few
people who think."*

EMILY S. DEXTER, A. B., A. M.
Professor of Education.

"Well, so much for that."

PEARL HOGREFE, A. B., A. M.
Professor of English.

"Be specific."

HUGH A. WYCKOFF, A. B.
Professor of Chemistry.

*"Don't forget the girls basketball practice
this afternoon."*

The Owl



JOHN O. OLSON, A. B., A. M.
Professor of History.
"I presume so."

FELICIE M. HAVRESTICHE, A. B., A. M.
Professor of Romance Languages.
"Que leccion estudia Ud hoy?"

CECIL O. WILLIAMS, A. B., A. M.
Professor of Mathematics and Physics.
"For instance."

ALLEEN WILSON, A. B.
Professor of Home Economics.
"Don't you know?"

CHAS. H. WITHINGTON, A. B., A. M., M. S.
Professor of Agriculture and Biology.
"As Ag. Profs. only stay one year—."

The Owl



INA C. WACHTEL.
Head of Commercial Department.
"Oh! Joy be!"

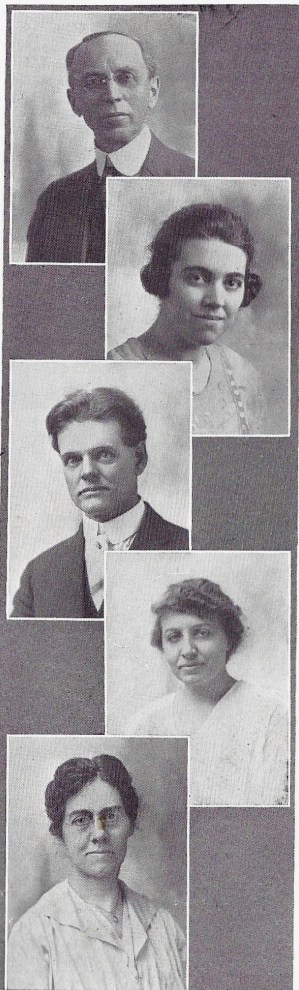
MAUDE GIBSON, A. B.
Head of Teacher Training Department.
"True pleasure lies in the joy of accomplishment."

ARCHIE WOOD.
Instructor in Science.
"We can't be bothered."

FANNIE E. WILSON, A. B., B. S.
Instructor in History.
"I will read for our lesson the—Psalm."

FLORENCE E. MOORE, A. B.
Instructor in English.
"Look that up in the dictionary."

The Owl



JOSEPH E. LAYTON.

Director of Conservatory. Instructor in Piano, Pipe Organ, and Analysis.

"We have our regular student recital this afternoon."

PAULINE HARPER.

Associate Instructor in Piano and Ensemble.

"Friendship."

HERBERT C. KELSEY.

Instructor in Voice.

"Now to be perfectly frank with you."

GRACE HENDERSON, B. U.

Instructor in Expression.

"Now US do all get into this."

CARRIE SHEPHERD.

Instructor in Art.

"Well!"

The Owl



VERA HERRING.

Preceptress.

"Don't you want a date this evening, Mr. Moxley?"

EARL A. DAVIS.

Director of Athletics.

"I give you away."

A. D. McCAMPBELL.

Instructor in Violin and Director of Band and Orchestra.

"Remember band practice today."



The Faculty Enters Chapel

It was on Wednesday morning that I sat in Wesleyan's chapel and was able to observe the Faculty as they entered.

First and foremost came Doctor Kind-Heart with his familiar smile and fatherly bearing, as he surveyed all the members of his college family with a look of intense satisfaction. Close behind him and with a look of equal satisfaction stood Dean Wish-You-Well, with a song book in his hand. They were engaged in a conversation made inaudible by the frequent "tap-tap" of little Think-He-Knows-It-All's drum and the loud and sonorous "toot" of Mr. Look-At-Me's cornet.

Amidst all this clamor Faculty's Babe took her accustomed seat beside Mademoiselle Aristocracy and proceeded to explain why Professor Good-Will and Miss Efficiency were absent on account of influenza. At this point Daddy-Long-Legs and young Professor Much-Pride entered and took their seats in the rear row.

By this time the Orchestra was almost in tune and the squeak of Sissy-Boys violin could be heard above the increasing "tap-tap" of little Think-He-Knows-It-All's drum. Miss Don't-I-Look-Cute's violin could be heard next as Professor Melodious took his seat beside Modern Hercules and proceeded to rosin his violin bow. At this time all eyes were attracted to the balcony where Old Father Time was entering with his long familiar stride. He sat down directly back of Miss Artistic, who was seated at the piano discussing a recent song with Professor Smile-And-Blush. Next came Miss Dignity and Miss Modesty accompanied by Miss Energetic and Miss Always-Neat. They were no sooner seated than Mr. Newly-Wed and Miss Motherly-Love appeared. They were closely followed by Professor Oddity and the morning exercises began.

First Dr. Kind-Heart arose and expressed his opinion about the prevailing "flu" cases. Then Professor Smile-And-Blush announced a song. He directed it to the end and with a final gesture which seemed to push the whole family off the edge of the world he took his seat.

Next Dean Wish-You-Well arose and read the morning lesson, after which he explained that announcements were in order. Old Father Time was the first on his feet. His lips moved for the short space of a minute. No one could hear him, but all took it for granted that it was the announcement of a student recital.

Professor Smile-And-Blush arose and with animation urged that all be present at Glee Club rehearsal that afternoon.

Miss Dignity expressed her regret that a very valuable book had disappeared from the library.

Dean Wish-You-Well announced that Y. W. would be led by Bert Burrows and Y. M. by Miss Wachtel.

All the faculty were still for a few minutes during which the student announcements were made, and then Doctor Kind-Heart announced the closing march. Again little Think-He-Knows-It-All's drum and Mr. Look-At-Me's cornet could be heard above the noise of hurrying feet, and the dignified Faculty marched to their respective class rooms.

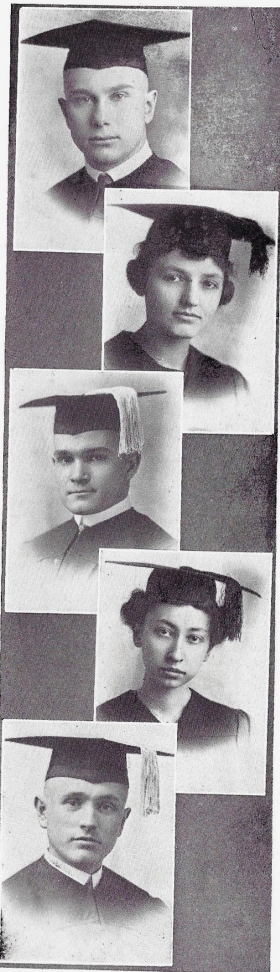
—N. P. '23.



SENIORS



The Owl



H. CLAIR EBERHART Cameron, Mo.
Excelsior, Y. M. C. A., President
Senior Class, "W" Association, Football, Basketball, Baseball.

To be a versatile athlete is a wonderful accomplishment, but to promote clean sportsmanship is an art. A man possessing unbounded energy, a keen sense of humor, and plenty of optimism.

VERA C. SHAFFER Clarinda, Ia.
Ruthean, Y. W. C. A. Cabinet, Criterion Staff.

To be what you seem is a rare accomplishment. Her sunny smile she flings broadcast, and with a cheery word doth she greet you, and yet about her future we can only guess.

GEORGE SHARP Mathiston, Miss.
Excelsior, Y. M. C. A., "W" Association, Capt. Football, Quartette, Glee Club, Orchestra.

To possess a striking personality is to be rich in friends. Whether it be in song, in speech or in sport, he proves himself a true son of the Southland. The field of chemistry greets him with high expectations.

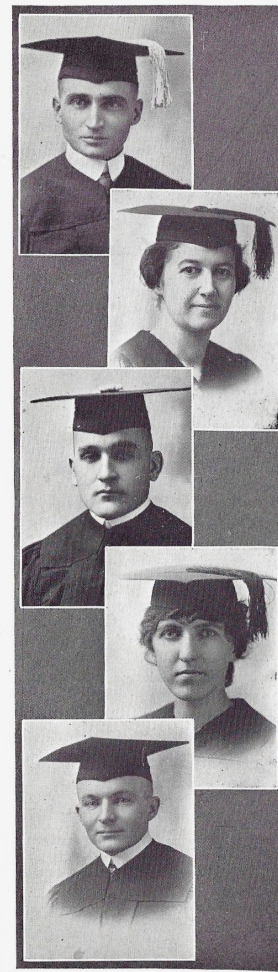
EDITH GIBSON Cameron, Mo.
Aesthesian, Y. W. C. A., Criterion Staff.

Her treasure lies in scholastic attainments. Quiet of manner, steadfast in Christian association, and determined in purpose to direct others in their quest of knowledge, she is certain to make paramount the cause of education.

WILSON THOMAS Cameron, Mo.
Adelphian, Y. M. C. A. Cabinet, Editor-in-Chief Criterion, Assistant in Chemistry, Manager Men's Glee Club, Yell Leader, Orchestra, Secretary Senior Class.

To him failure is a complete stranger. Throughout his eight years at Wesleyan he has always been surrounded by a multitude of duties, all of which he has completed with a high degree of success. His friends are the criterions of his efforts as either journalist or instructor.

The Owl



JOHN T. SCHWEEPE Reger, Mo.
Excelsior, Y. M. C. A., Business Manager Criterion, Assistant in Agriculture.

Hist! The dispeller of all gloom approaches. His is not a case of mistaken identity for he has been tried and found un-failing in friendship. May the railway corporation be considerate of this promising scientist.

BLANCHE ENSLEY Parks, Neb.
Ruthean, Y. W. C. A.

To be interested in people is to possess a full conception of life. 'Tis true that this very amiable, sensible and energetic personality is the chief source of inspiration for a certain young minister.

ALBERT H. BURROWS Cameron, Mo.
Adelphian, Y. M. C. A. Cabinet, Ministerial Association, "W" Association, Football, Glee Club, Student President.

A man's man is in our presence. He has entered into every phase of school activity with undaunted energy and earnestness. May the same characteristics dominate his ministrations to the suffering of a dark continent.

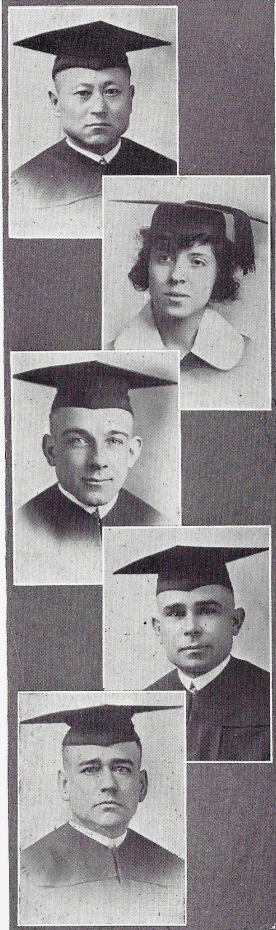
CHRISTINE HINKLEY Cameron, Mo.
Aesthesian, Y. W. C. A., Assistant in English, Girl's Glee Club.

True greatness can only be discovered by one's friends. Seeking not the exalted places, but ever searching after knowledge for the sake of knowledge, she has typified constancy in its truest sense.

PAUL OSMAN Okarche, Okla.
Adelphian, Y. M. C. A., Ministerial Association, Orchestra, Glee Club.

A man who commands your respect and admiration. He has devoted enough time to scholastic endeavor to attain much success therein and yet he has made his life more complete by engaging in every student activity. Truly is he fitted to teach the word.

The Owl



KOON WHA KIM Peck Suck No, Korea.
Excelsior, Y. M. C. A., Ministerial
Association.

A man who has fought a hard fight and won. While struggling to master a foreign tongue, he has always retained a sunny disposition, and ever clung to his life hope of rendering Christian service to his native folk in distant Korea.

RUTH BIEBER Oklahoma City, Okla.
Ruthean, Y. W. C. A., Girl's Glee Club.

By diligence and perseverance can the full rounded life be attained. With quiet and unassuming earnestness she has met every requirement of college life. Willingness to accept has made her a good student; willingness to give will make her a conscientious teacher.

FRANK LAWRENCE Cameron, Mo.
Adelphian, "W" Association, Football,
Basketball, Baseball.

A happy man is ever welcome in the crowd. Observant of the fine points in the game of sport and of life, gifted with business foresight, and capable of doing seriousness, he is sure to bring success to any school's athletics.

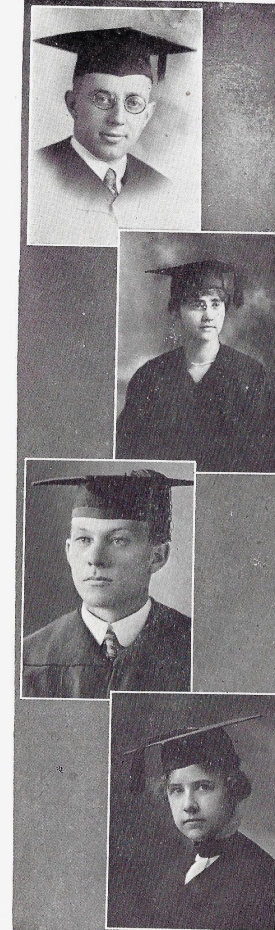
EDGAR SCHONK Cameron, Mo.
Adelphian, Y. M. C. A., Ministerial
Association.

By his walk shall ye know him. A man devoid of all flourishes, modest in speech, and quiet in manner. Having been declared victor in the field of matrimony, he now aspires for the ministry.

WALTER J. IMES Cameron, Mo.
Excelsior, Y. M. C. A., Ministerial
Association.

For him, ready speech is no lost art. If we only search for that which is good, oftentimes in his speech we shall find wonderful truth. Already a pastor, he dreams of the bishopry.

The Owl



ROLFE DOUGLAS Cameron, Mo.
Adelphian, Y. M. C. A.

Experience has fitted him complete for life's endeavor. He has cleared every hurdle in his race for a full rounded life. A devotee of science, an untiring worker, and a man of ambition, who seeks the best that the world offers to her people.

FAY CHEESMAN Rockport, Mo.
Ruthean, Y. W. C. A.

The world ever craves a cheery word or a glad smile and to be generous with either is to achieve well merited popularity and nowhere do these talents count for more than in brightening the halls of education, wherein lies her field of happy and successful endeavor.

CLINTON FARMER Cameron, Mo.
Excelsior, Y. M. C. A.

Surely he belongs to the Knights of the Round Table for in helping others he has found his own happiness. Besides a devotion to home ties, and a sincerity for study he possesses a zeal for the advancement of Christian principles.

EVELYN BECKETT St. Joseph
Ruthean, Y. W. C. A.

College ties are the bonds of friendship. A wealth of initiative combined with purpose and gladness have made her endeared to a host of friends. It is whispered that soon she may quit the teacher's desk and then—MOORE we cannot tell.

The Owl

The Seniors

The Senior class is very, very smart
We say it with tranquility,
They pride themselves most of all
Upon their versatility.

Some of them are musical—
Can sing to you and play.
They will show you their ability
By their parts on class day.

Some of them are studious
And some of them are not.
Some of them are changeable
But a majority are sot."

Some of them are pretty
And some are merely gay.
While some of them are noted
For the things they do not say.

We know that other students
Like them are not so wise
And so I'd like before they leave
To give them some advise.

Don't stop to go a gossiping
Or a flirting on the walk.
It isn't quite the thing to do
And school boards, you know, will talk.

Don't wear pink, what'er you do
Tho it may become you fair;
Don't stick your pencil in your mouth
Nor put it in your hair.

If at first you don't succeed
No use to get discouraged.
Just wear a grin and wade right in
And find the reason why. P. B. '21

JUNIORS



The Owl



BARBARA E. DICKINSON, Brookfield, Mo.
President Junior Class, President Y.
W. C. A., Aesthesian, Owl Staff, Cri-
terion Staff.

Why should I blush to own my love?
'Tis love that rules the realms above.
Why should I blush to say to all,
That virtue holds my heart in thrall?



LOUIS L. PICKETT Mercer, Mo.
Sec'y.-Treas. Junior Class, Pres. Y.
M. C. A., Excelsior, Owl Staff.

Alas, now, I pray you work not so hard.
I would that lightning had burned those
Books to which you are wed.



SELDON HUMPHREY Dellvale, Kan.
Pres. Ministerial Association, Y. M.
C. A., Adelphian, Owl Staff.

At church with meek and unaffected grace
He looked adorned in the venerable place.
Truth from his lips prevailed with double
sway,
And fools who came to scoff remained to
pray.



RUTH O. BRAY Maysville, Mo.
Y. W. C. A. Cabinet, Ruthean, Owl
Staff, Glee Club, Board of Control,
Basketball.

Life hath no end and lowly spot
That doth not in her sunshine share.



W. JESSE LYLE Cameron, Mo.
Adelphian, Owl Staff, "W" Associa-
tion, Football, Track.

Too young for her?
Ah! Say not so!
Too young? Too young?
Ah No! No! No!

The Owl



TRUE TAYLOR Cameron, Mo.
Y. M. C. A. Cabinet, Adelphian, Owl
Staff.

And still they gazed, and still their wonder
grew,
How one small head could carry all he
knew.



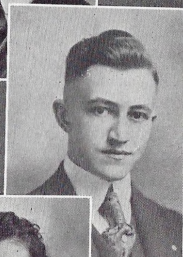
RUTH HERZOG New Haven, Mo.
Y. W. C. A. Cabinet, Ruthean, Owl
Staff, Glee Club.

My will fulfilled shall be
In daylight and in dark.
My thunderbolt has eyes to see
Its way home in the dark.



JAMES L. BATE Chillicothe, Mo.
Ministerial Association, Y. M. C. A.
Cabinet, Excelsior, Owl Staff.

I mourn no more my vanished years.
Beneath a tender rain,
An April rain, of smiles and tears
My heart is young again.



BYRON JAMES Cameron, Mo.
Adelphian, Owl Staff, Glee Club.

What manner of man is he? Is he of God's
making?
Is his chin worth a beard?



PEARL BRYANT Cameron, Mo.
Y. W. C. A. Cabinet, Aesthesian, Owl
Staff.

I am a poet born to stray,
And so my thoughts are far away.



An Appreciation

The birds upon the Campus sing their songs of praise; the flowers pay their tribute in fragrant incense as they sway upon their stems; the trees shake down their nuts and fruit from their bending boughs; the stars send their silver beams to gladden us and all perform their mission of service and appreciation.

Before the junior class of nineteen twenty makes its exit from the Owl Staff whereon it has worked for the past year, it too will sing its song of praise and show its appreciation of the advantages and opportunities given it by the school.

The Missouri Wesleyan College stands preeminently as one of the leading educational institutions of Missouri. Its buildings are beautifully located. The halls are wide and the classrooms large and light. The literary societies are ambitious. The Young Men's and the Young Women's Christian Associations are enthusiastic in their work. The Academy is well organized and conducted with all these points to its credit, here is the place every young man and young woman within the state should come for an education.

The members of the junior class can speak with authority, for they fully realize the opportunities to the wide awake students of the school. A feeling of sadness comes over us when we think of going down that long cement walk for, perhaps the last time, but we shall carry away with us beautiful memories of the school, our classmates and instructors.

Dear old school, we love you. And in the future we will need but to close our eyes, and the dusty schoolroom, and the noisy children, the click of the type-writer, the hum of the court room, or the duties of the home will vanish and in their stead will come sweet memories of you! Once more we shall smell the fragrance of your red clover blossoms and your Japanese roses; and again we will feel the force of the winter wind as it circles around walls, or the grateful shock of the summer breeze as it comes over your wind swept campus.

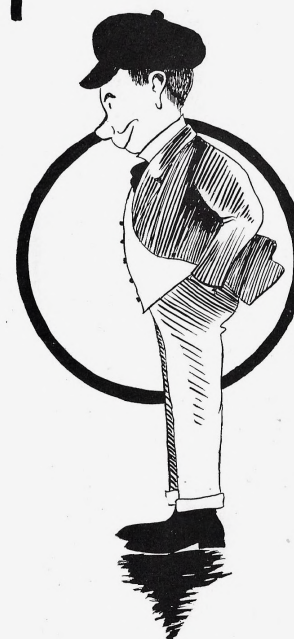
There is one figure that will dominate our memory, and that is the head of the Faculty—our beloved President, Dr. Harmon—the man who was always kind, capable, and courteous. He who was ever eager to help us, when discouraged or disappointed.

Then again we shall see our instructors; they who were kind, courteous, broadminded, and patient, ever trying to help us reach our goal; they, who by precept and example have helped each of us to be better men and women, and so taught us that when we leave this school we will go with a determination "To stretch forth our hands and give such service that others also may be lifted up."

Remembering all the kindness and helpfulness of both the President and the Faculty, and all the advantages provided for us by our dear old Wesleyan, the junior class takes this, its last opportunity of expressing in the Owl, its appreciation of Wesleyan. We now join the birds of the campus, the robins, the larks, the blackbirds, the bluebirds, and the wrens in their songs of praise. We pay tribute to all that is beautiful around the buildings, upon the campus, and in the classrooms. We shake down the fruit of information from the forbidden tree for the benefit of those who, in the future are to enter here. Thus the juniors perform their mission of appreciation.—P. B. '21.



Sophomores



The Owl Club

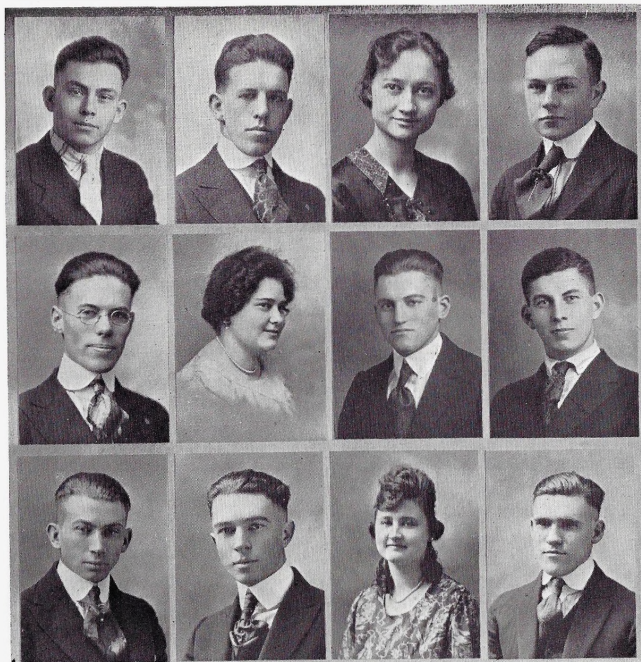


Eugene McCoy, Pres., Lucille Wiley, Sec'y.
Clyde Crowder, Gertrude Theilman, Marmaduke Medley, Thelma Riley
Elsie Constance, John Harmon, Alice Bridges, Finis Frazier
Ivan Bray, Olive Smith, Wayne Silvius, Allison Skinner

The Owl Club

- EUGENE MCCOY** Cameron, Mo.
Pres. Sophomore Class, Adelphian, Football, Baseball, Track;
"W" Association.
"My only books were woman's looks,
And folly's all they've taught me."
- LUCILLE WILEY** Cameron, Mo.
Sec'y. Sophomore Class, Y. W. C. A., Ruthean, Glee Club.
"Man is no match for woman where mischief reigns."
- CLYDE CROWDER** Cameron, Mo.
Y. M. C. A. Pres., Excelsior, Ministerial Association.
"Let us sympathize with him; he is married."
- GERTRUDE THEILMAN** Cameron, Mo.
Aesthesian, Basketball.
"Oh, how I would like to row a boat big enough for two."
- MARMADUKE MEDLEY** Mokane, Mo.
Excelsior, Football, Basketball, Track, Criterion Staff.
"Not all preachers sons are bad."
- THELMA RILEY** Macon, Mo.
Y. W. C. A. Pres., Ruthean, Criterion Staff, Mgr. Glee Club.
"Beware men, I am a man hater."
- ELSIE CONSTANCE** Cameron, Mo.
"Don't Judge her by the noise she makes."
- JOHN HARMON** Louisville, Ill.
Y. M. C. A., Adelphian, Football, Baseball, "W" Association.
"My, what a lonesome place; she is gone!"
- ALICE BRIDGES** Cameron, Mo.
Y. W. C. A., Ruthean, Basketball.
"The boys are all afraid of HIM."
- FINIS FRAZIER** Cameron, Mo.
Adelphian, Men's Quartette, Glee Club, Yell Leader.
"A fair maiden smiled at me—once."
- IVAN BRAY** Maysville, Mo.
Adelphian, Mgr. of Athletics, "W" Association.
"Wesleyan has sure made a good boy of me."
- OLIVE SMITH** Meadville, Mo.
Y. W. C. A., Ruthean, Criterion Staff, Ladies' Quartette, Glee Club, Basketball.
"All the girls are jealous of me."
- WAYNE SILVIUS** Cameron, Mo.
Adelphian, Football, "W" Association.
"All great men are dying—I don't feel very well myself."
- ALLISON SKINNER** Braymer, Mo.
Excelsior.
"If I don't know and Prof. don't know, I don't know who would know."

The Owl



Clyde Urban, Clay Davis, Velma Seaton, Frank Bennet
Donald McGlumphy, Mable Colaw, Irl Satterlee, Stanley Phillips
John Hill, Lee Wightman, Lyllis Farnsworth, Loren McCracken

The Owl

- CLYDE URBAN
Y. M. C. A., Excelsior.
"If Prof. don't know, ask me." Altamont, Mo.
- CLAY DAVIS
Y. M. C. A. Cabinet, Excelsior, Basketball.
"Any one desiring a date, let me know." Braymer, Mo.
- VELMA SEATON
Aesthesian.
"I do know he likes me so I must not keep still." Cameron, Mo.
- FRANK BENNETT
Adelphian.
"Says less in more words than any man on the campus." Cameron, Mo.
- DONALD MCGLUMPHY
Y. M. C. A. Cabinet, Adelphian, Criterion Staff, Glee Club.
"Taken." Cameron, Mo.
- MABLE COLAW
Y. W. C. A., Aesthesian, Assistant Librarian.
"She says so little that little can be said of her." Cherryvale, Kan.
- IRL SATTERLEE
Y. M. C. A., Excelsior, Track, Basketball.
"I am the kind of a wife a girl should have." Utica, Mo.
- STANLEY PHILLIPS
Y. M. C. A., Excelsior.
"The Wabash railroad—," Moberly, Mo.
- JOHN HILL
Adelphian.
"Oh! Darn this is a slow world." Chillicothe, Mo.
- LEE WIGHTMAN
Adelphian, Track.
"The idol of all woman kind." Braymer, Mo.
- LYLLIS FARNSWORTH
Y. W. C. A., Ruthean, Glee Club, Basketball.
"Don't ever let your work interfere with having a good time." Westboro, Mo.
- LOREN MCCracken
Y. M. C. A., Adelphian, Basketball, "W" Association.
"How much will you give me for my Ford this morning?" Cameron, Mo.

The Owl

The Midnight Game

The football game was over,
And before the parlor grate
A maiden and a man
Were lingering rather late.

They talked of punts and passes,
Things which are rather tame,
Till Cupid put his nose guard on
And butted in the game.

He lined that couple up;
Then made them toe the mark.
Soon he had them going
With a scrimmage in the dark.

As they sat there silent
In this new found bliss,
The man thought that the scrimmage
Ought to end up with a kiss.

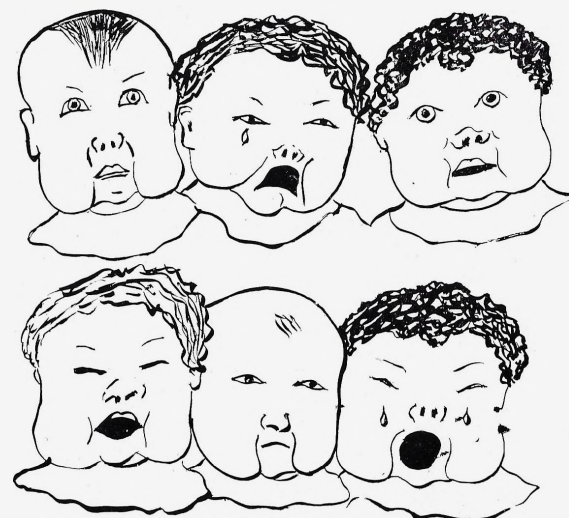
Thereupon he tried one,
An amateur affair,
But he lost it on a fumble
And instead he hit the air.

The next he landed on her ear,
And the maid did shyly say,
"You're penalized for holding,
Likewise for offside play."

Fiercely he tried another,
This time succeeding fine,
For he made a bully touchdown
On that warm, red two-yard line.

As they sat there in silence,
Communing soul to soul,
The parlor door swung open,
And father kicked the goal.—Ex.

The Owl



FRESHMEN

The Owl



Bayard Conklin, Anna Helen Corken, Fred McFarland, Florence Ensign
Christine Kendall, Herbert Kimes, Neva Michael, Wick Sharp
William White, Esther Bertrand, Erman Miller, Ardis Sturgis
Virginia Coffing, Leslie Irwin, Marietta Dillener, Carl Campbell

The Owl

- | | |
|--|------------------|
| BAYARD CONKLIN
Adelphian, Football, Baseball, "W" Association.
"Funny" | Cameron, Mo. |
| ANNA HELEN CORKEN <i>Conklin</i>
Y. W. C. A., Ruthean.
"Fair" | Hiawatha, Kan. |
| FRED MCFARLAND
Adelphian, Football, "W" Association.
"Formidable" | Altamont, Mo. |
| FLORENCE ENSIGN <i>Christie</i>
Aesthesian.
"Freddie" | Cameron, Mo. |
| CHRISTINE KENDALL <i>McFarland</i>
Y. W. C. A., Aesthesian, Glee Club, Basketball, Owl Queen.
"Fathomless" | Wathena, Kan. |
| HERBERT KIMES
Y. M. C. A., Adelphian, Track.
"Faithless" | Cameron, Mo. |
| NEVA MICHAEL
Y. W. C. A., Aesthesian, Basketball.
"Fidget" | Harris, Mo. |
| WICK SHARP
Y. M. C. A. Cabinet, Excelsior, Ministerial Association, Glee Club.
"Famous" | Mathiston, Miss. |
| WILLIAM WHITE
Y. M. C. A., Excelsior.
"Flighty" | Mendon, Mo. |
| ESTHER BERTRAND
Y. W. C. A., Aesthesian, Basketball.
"Frisky" | King City, Mo. |
| ERMAN MILLER
Y. M. C. A., Adelphian, Orchestra.
"Fibbing" | Skidmore, Mo. |
| ARDIS STURGIS
Y. W. C. A., Aesthesian.
"Flexible" | Marceline, Mo. |
| VIRGINIA COFFING <i>Irwin</i>
Ruthean.
"Fanciful" | Cameron, Mo. |
| LESLIE IRWIN
Adelphian, Football, Basketball, Baseball, Track, "W" Association.
"Ferocious" | Jamesport, Mo. |
| MARIETTA DILLENER <i>McFarland</i>
Ruthean.
"Finished" | Cameron, Mo. |
| CARL CAMPBELL
Adelphian.
"Flirt" | Osborn, Mo. |

The Owl

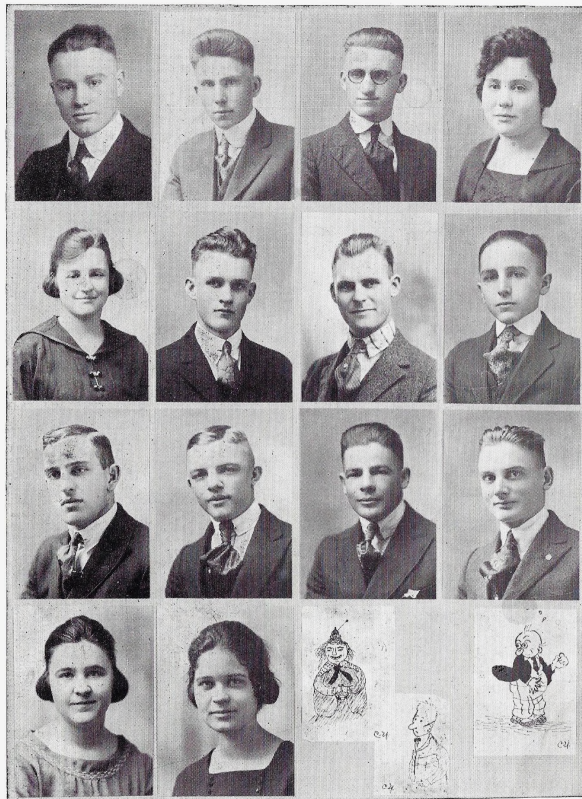


Twila Atherton, Herbert Dieterich, Louise Robison, Harold Farmer
Kenneth Crawford, Hildred Loew, Leroy Williams, Edna Garner
Ada Williamson, Glenn Filley, Ruth Diven, Harry Thomas
Mark Green, Nelle Poe, Stuart Conklin, Emma Loyce Wise

The Owl

- | | |
|---|-----------------|
| TWILA ATHERTON
Y. M. C. A., Ruthean, Basketball.
"Faithful" | Medill, Mo. |
| HERBERT DIETERICH
Y. M. C. A., Adelphian, Football, Baseball, "W" Association.
"Flippant" | Marceline, Mo. |
| LOUISE ROBISON
Y. W. C. A., Aesthesian.
"Frivolous" | Brookfield, Mo. |
| HAROLD FARMER
Excelsior, Football, Track, "W" Association.
"Freakish" | Cameron, Mo. |
| KENNETH CRAWFORD
Y. M. C. A. Cabinet, Excelsior, Glee Club, Quartette.
"Fond" | Cameron, Mo. |
| HILDRED LOEW
Y. W. C. A., Ruthean.
"Fine" | Mendon, Mo. |
| LEROEY WILLIAMS
Adelphian.
"Foxy" | Cameron, Mo. |
| EDNA GARNER
Aesthesian, Glee Club.
"Feminine" | Cameron, Mo. |
| ADA WILLIAMSON
Y. W. C. A. Cabinet, Ruthean.
"Fussy" | Lathrop, Mo. |
| GLENN FILLEY
Adelphian, Football, Basketball, Baseball, Track, "W" Association.
"Faultless" | Turney, Mo. |
| RUTH DIVEN
Y. W. C. A. Cabinet, Aesthesian.
"Fluent" | Cameron, Mo. |
| HARRY THOMAS
Y. M. C. A., Excelsior, Glee Club, Quartette, Criterion Staff.
"Flaming" | Savageton, Wyo. |
| MARK GREEN
Adelphian, Glee Club, Orchestra.
"Flashy" | Pickering, Mo. |
| NELLE POE
Y. W. C. A., Aesthesian.
"Fantastical" | Holt, Mo. |
| STUART CONKLIN
Adelphian, Football.
"Favorite" | Cameron, Mo. |
| EMMA LOYCE WISE
Aesthesian.
"Foolish" | Cameron, Mo. |

The Owl



Newell Diven, Eckles Park, Harry Sloan, Opal Ashburn
 Clara Sloan, Romaine Wood, Ray Holder, John Glendenning
 John Harter, Burton Gross, David Dillman, Dean Warner
 Marie Early, Grace Strine,
 Eva Wilkinson, Lawrence Wheeler, Charles Carson.

The Owl

- NEWELL DIVEN
 Adelphian, Football.
 "Fiery" Cameron, Mo.
- ECKLES PARK
 Y. M. C. A., Excelsior.
 "Fibbying" Kidder, Mo.
- HARRY SLOAN
 Y. M. C. A., Excelsior, Football.
 "Footlardy" Cameron, Mo.
- OPAL ASHBURN
 Y. W. C. A., Aesthesian.
 "Fleshy" Green City, Mo.
- CLARA SLOAN
 Ruthean.
 "Friendly" Cameron, Mo.
- ROMAINE WOOD
 Adelphian.
 "Freckles" Cameron, Mo.
- RAY HOLDER
 Excelsior, Football, Basketball, Baseball, Track, "W" Association.
 "Farmer" Braymer, Mo.
- JOHN GLENDENNING
 Adelphian.
 "Fresh" Cameron, Mo.
- JOHN HARTER
 Adelphian, Football.
 "Fierce" Cameron, Mo.
- BURTON GROSS
 Adelphian, Football.
 "Fleet" Cameron, Mo.
- DAVID DILLMAN
 Excelsior, Football, Track, "W" Association.
 "Fickle" Sailor Springs, Mo.
- DEAN WARNER
 Adelphian, Football.
 "Firm" Cameron, Mo.
- MARIE EARLY
 Aesthesian, Basketball.
 "Flourescent" Mercer, Mo.
- GRACE STRINE
 Ruthean.
 "Forsooth" Braymer, Mo.
- EVA WILKINSON
 "Floppy" Cameron, Mo.
- LAWRENCE WHEELER
 Y. M. C. A., Ministerial Association, Excelsior, Football, "W" Ass'n.
 "Fervent" Cameron, Mo.
- CHARLES CARSON
 Adelphian, Football, "W" Association.
 "Flashy" Cameron, Mo.

The Owl Club

Special Students

LOREN RAPIER

Y. M. C. A., Excelsior, Ministerial Association.

Calm, Quiet, and studious, yet full of fire.

INA WACHTEL

Y. W. C. A.

A faculty member who is able to loose her dignity and become a "regular" student once more.

ARCHIE WOOD

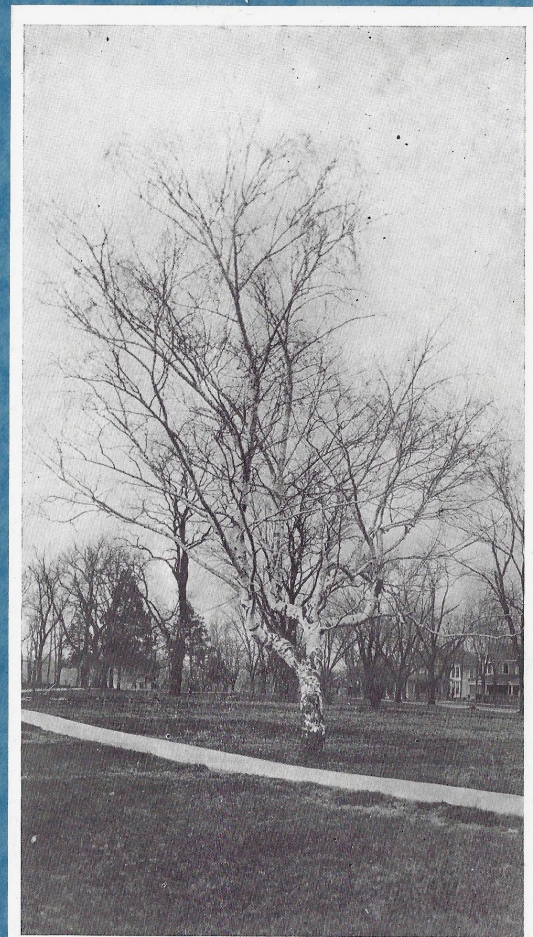
Y. M. C. A.

Happy indeed is he who worries about nothing.

MRS. SADIA WOOD

Y. W. C. A., Aesthesian, Glee Club.

One who aspires to assist others along the road of learning in future years.



BOOK TWO
ACADEMY,
MUSIC AND
SPECIAL
DEPARTMENTS

The Owl

PREPS



The Owl



Enos Stambach, Horace Perry, Mary Bieber, Eugene Woods
 Fernon Sewell, Mary Entriken, Orr Kirkpatrick, Ed Cooley
 Kendrick Hunt, Pearly Walton, Mrs. Crowder, Junior Sanders
 Vernita Ruddell, Rex Orr, Lucille Campbell, Fayette Rapier.

The Owl

Should you ask me whence these stories
 Whence these legends and traditions?
 I should answer, I should tell you
 From the halls and the classrooms
 Of Missouri Wesleyan College,
 Where the handsome men and maidens
 Live among their books and papers.
 I repeat them as I heard them,
 From the lips of aged seniors
 Should you ask me where these seniors
 Got their earliest forms of knowledge
 I should answer, I should tell you
 From the forest and the prairies
 From the cities of our country.

From the little town of Skidmore
 Came a maiden fair and stately,
 Came our leader kind and patient,
 Came our president, Vernita Ruddell.
 And into our midst came Stambach
 From the little town of Meadville
 Came to us the great musician
 Came the maker of sweet music,
 Young and beautiful was Miss Campbell.
 She it was who brot the morning,
 She it was whose smiling glances
 Chased the dark o'er hill and valley.

In these days came Junior Sanders
 From his home at Sheridan, Missouri
 Came unto Missouri Wesleyan
 To obtain great stores of knowledge.
 And from Breckenridge, Missouri
 Kendrick Hunt, young, tall, and handsome
 Came a student to our college,
 Came into this class of seniors
 From the village of his childhood
 From the homes of those who knew him
 Came Kirkpatrick to our Wesleyan
 Came a soldier to our college.
 And into this class of seniors
 Came the gentle Mary Bieber
 Came a singer of sweet music,
 Came the sweetest of all singers.

At the edge of "Cinder alley"
 Stood the "mansion" fair and spacious
 In this mansion dwelt some seniors
 Dwelt the bashful Horace Perry
 And with him, Rex Orr, the preacher
 He, another gallant soldier
 Who from war returned triumphant,
 Came into our class at college,
 Sewell also dwelt among them
 In this fair and spacious mansion
 Dwelt among the other boys
 Who inhabited the mansion.

Mrs. Crowder was so busy
 Busy with her home and family
 That she finished by correspondence
 Finished with the other seniors.
 Early in the fall McMahan
 Left his home and came to college.
 He, a tall and stately young man,
 He, the tallest of all seniors,
 Pearly Walton came, a barber
 In the little town of Jamesport
 Came to get a little knowledge,
 Along with all the other seniors.
 Edward Cooley came from Lucerne
 To Missouri Wesleyan College
 He another of our number
 Who helped "Uncle Sam" so bravely.
 Eugene Wood, fair haired, and youthful
 Tall of stature, broad of shoulders
 Was the last to come among us
 Last but not least importance,
 Mary Entriken came to Wesleyan,
 Came to learn to be a teacher
 Came to finish the academy
 With the class of nineteen twenty.
 Thus these seniors came to Wesleyan
 And departed full of knowledge.

The Owl



Allan McMahan, Irene Wamsley, George Schonk, Harriet Smith
 Thelma Silvey, Samuel Moxley, Effie Oder, William Hinkley
 Carl Woods, Stella Grinstead, Fayette Rapier, Esther Zachary
 Pansy Haddon, George Spurlock, Martha Suetterlin, Lewis Cooley
 Raymond Spurlock.

Note: Fayette Rapier was classified as a Senior just before we went to Press.

The Owl



Mary Hartsook, Cora Sams, Lillie Ballard
 Joe Knierim, Sammie Bauer, Ralph Orr, Fred Dildine.

The Owl



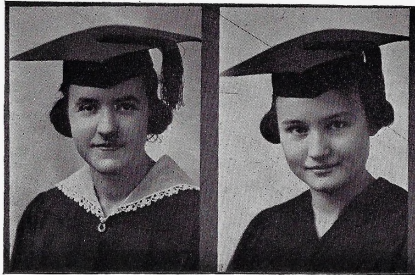
Clyde Taylor, Hattie Hawkinson, Everett Blackman, Mary McKee
 Helen Batchelder, Roy Schneider, Edris Bentley, Alvis Runyan
 E. M. Vaughn, Violette Batchelder, Charles Burgess, Ruby Little
 Levi French, Lowell Heath, Otis Jackson, Daniel Lee
 Willard Selby, Frances Spurlock.

The Owl

MUSIC



The Owl



VALERA SMITH Cameron, Mo.
Ruthean.

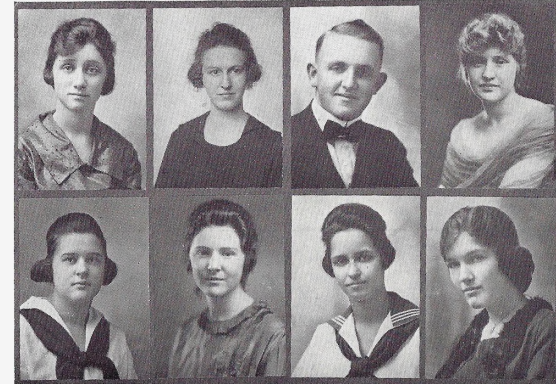
The ear is the road to the heart.

Alice Englehart Cameron, Mo.
Y. W. C. A., Ruthean.

Music, when soft voices die, vibrates in
the memory.

The Owl

Piano Students



Edna Garner, Ella Bentley, Enos Stambach, Helen Bothwell
Florence Miller, Bernice Bothwell, Alice Douglas, Helen Deems.

Unclassified Piano Students.

Valencia Bauer	Neva Michael
Mary Bieber	Mary Frances Millsap
Alice Bridges	Rex Orr
Angela Bzard	Nelle Poe
Lucile Campbell	Genevieve Poor
Anna Helen Corken	Emily Prugh
Kenneth Crawford	Carroll Russell
Marietta Dillener	Velma Seaton
Grace Farmer	Thelma Silvey
Stella Grinstead	Dorothy Smart
Pansy Haddon	Harriet Smith
Donna Hagan	Frances Spurlock
Grace Hainline	Grace Strine
Marion Harmon	Martha Suetterlin
Mary Hartsook	Harry Thomas
Hattie Hawkinson	Lola Tillett
Elsie Ingram	Ernest Vaughn
Margaret Kelley	Irene Wamsley
Adelaide Kemper	Cecyl Wiley
Christine Kendall	Mildred Wiley
Lois Kennish	Eva Wilkinson
Blanche Martin	Viva Williams
Mary McKee	Esther Zachary

The Owl



BLANCHE SAMS
Y. W. C. A., Aesthesian, Glee Club, Quartette.
To hear her sing—to hear her sing—
It is to hear the birds of spring,
In dewy groves, on blooming sprays
Pour forth their blithest melodies.

Cameron, Mo.

PAULINE HARPER
Glee Club, Quartette.
Her voice—it is always clear and sweet, and always expressive of
a love for the best in music.

St. Joseph, Mo.

HELEN BOTHWELL
Ruthean, Glee Club.
Her smile of cheer and voice of song
Seem so divinely to belong
To ever joyous spring.

Nettleton, Mo.

Postgraduate.
MRS. E. A. DAVIS Cameron, Mo.
Step by step one goes very far.



The Owl

Voice Students



Olive Smith, Harry Thomas, Ruth Herzog
Christine Hinkley, Nova Bryan, Mary Bieber, Elsie Ingram

Unclassified Voice Students.

Zola Althouse	Alice Douglas	Neva Michael
Elsie Armentrout	Marie Early	Ralph Orr
L. K. Armentrout	Blanche Ensley	Rex Orr
Twila Atherton	Florence Farmer	Nella Poe
Bernice Bothwell	J. V. Gray	Cora Sams
Ivan Bray	Mark Green	Velma Seaton
Ruth Bray	Grace Hamline	Enos Stambach
Mable Colaw	Hattie Hawkinson	Ernest Vaughn
Eulalia Cook	Mrs. L. M. Jones	Ada Williamson
Edward Cooley	Pauline Leslie	Archie Wood
Lewis Cooley	Nita Maniece	Mrs. Sadia Wood
Kenneth Crawford	Allen McMahan	

The Owl

Campus Customs

All who are intelligent enough to be admitted with this college know the necessity of rules and customs in the governing of an institution of this kind and I will summarize only a few of the most important.

Some of our college customs have reasons for existing and should be carefully observed by Freshman as well as by new faculty members. Experience as a teacher is good, but entirely too slow for a rapidly traveling class of Wesleyanites. It is always well when we can assemble and assimilate the knowledge gained by those ahead of us and thus become wise unto salvation.

The Dormitory rules are intelligently worded and easily understood, with but few exceptions. In Sec. 7 which reads: "No washing shall be done in the bathrooms," may work a hardship on some few who board at the club where finger bowls are not provided. However by intelligent use of cold cream and powder, girls can keep quite attractive, without the use of soap and water. Another one of the dormitory rules often misunderstood is number 10: "No young ladies can meet gentlemen friends at trains unless accompanied by a teacher." This rule instead of being arbitrary and tyrannical is quite the reverse since it gives girls the privilege of walking to the Junction with Profs. Wood or Olson, or some other good fellow in the faculty. Number 11, reads: "Notice should always be given if guests are expected at the club." This will give the kitchen force an opportunity to turn the table cloths so as to appear quite proper. And Sec. 12: "Forbidding girls to go to any cafes or the Chocolate Shop without a chaperon," is misprinted. It should be, "No girl has the privilege of going to cafes or soda fountains until she has a chap-her-own."

The campus customs are not quite so easily understood. All Freshman should learn as soon as possible that the one aim of a college student is to get by. For instance: one should never read long and tiresome references if a clear and concise summary may be found in the encyclopedia. There are so many things to do besides studying that the student who learns to eliminate work has more time for college life, as window seat flirtations and such.

Students should also learn never to make positive statements. The philosopher says that it has ever been the privilege of the ignorant to be dogmatic; and a student should try not to appear ignorant. It is usually safe to be on both sides of any question.

The new faculty members also have a few things yet to learn. There are a few teachers who are not interested in the barbaric method of slaying men as customary football process and try to introduce the slow process of killing a student by cutting their grades. This is cruel but very effective since it includes also the girls.

Students, by their conduct in chapel suggest to careful observers how they are classified. The new students and Freshman will be thrilled and enthused by some copy written chapel speech by the big men, who condescend to visit us. But the upper classmen will be busy translating 20 French and thus make their moments count. Another way to save time is to manicure your finger nails while reciting psychology. The ability to do three things at once and make your Prof. think you are listening to him is a mark of student efficiency.

This question of where to carry on your flirtations is too touching to be permissible in the biology lab, has now become a grave problem, since Dr. Harmon has decreed that henceforth no one shall make love in the corridors of this building, as we have been in a habit of doing.

Students who make A's or A+, are those who have acquired the habit of being diplomatic in their attitude of their instructors. The "Y" lectures can talk "George Washington" all they please, it will not work in school. It always pays to be a good politician.

If as they say, a word to the wise is sufficient, I am sure these few suggestions will be of some benefit to the freshman as there are many of that kind in their class, and if at any time the new faculty should be in need of advice and assistance I am certain that the Sophmores and Juniors would be very glad to offer suggestions as to the proper and customary method of procedure.

The Owl

EXPRESSION



COMMERCIAL



DOMESTIC SCIENCE



ART



The Owl



ZOLA ALTHOUSE *Smith* Turney, Mo.
The present time is big with the future.

MARY ENTRIKEN *Baker* Turney, Mo.
Y. W. C. A., Aesthesian.
The teacher, to be successful, must be
"expressive."

PEARL MOORE *Hubb* Cameron, Mo.
I shall be loyal during my life.

ANGELA BUZARD *Decord* Jamesport, Mo.
Ruthean.
Women can do everything because they
rule those who command everything.

HELEN BOTHWELL Nettleton, Mo.
Ruthean, Glee Club.
The world is the book of women.

The Owl

Expression Department



Unclassified

Lillie Ballard	Mary McKee
Helen Batchelder	Neva Michael
Esther Bertrand	Florence Miller
Everette Blackman	Nelle Poe
Bernice Bothwell	Robert Russell
Alice Bridges	Blanche Sams
Emerson Brown	Irl Satterlee
Goldie Diven	Thelma Silvey
Helen Hainline	Olive Silvius
Laura Halley	Olive Smith
Nina Mae Harmon	Enos Stambach
Christine Hinkley	Lucile Wiley
Elsie Ingram	Howard Froman
Fairy Jones	Jesse Lyle
Lois Lawson	Ralph Shaw
Virginia McCue	Katherine Smith
Donald McGlumphy	

The Owl

Commercial Department



Mildred Beeks
Bessie Buck
William Brumbaugh
Lucille Campbell
Charles Burgess
Claude Drown
Lee French
Nora Harris
William Hinkley

Velma Kelley
Jack Ledgerwood
Edna Logue
Trella Maze
Eckles Park
Horace Perry
Margueritte
Quisenberry
Kathryn Richardson
Helen Samson

Irl Satterlee
Clara Sloan
Grace Strine
Caroline Talent
Pearle Walton
Lee Wightman
Violet Wilson
Mary Wolfe
Eugene Wood

The Owl

Domestic Science



MISS ALLEEN WILSON, Instructor.

Ruth Brav
Pearl Bryant
Anna Helen Corken
Edna Garner
Clara Sloan

Mrs. Sadia Wood
Esther Bertrand
Lyllis Farnsworth
Neva Michael
Thelma Riley

Lillie Ballard
Helen Batchelder
Cora Sams
Esther Zachary
Marie Early

The Owl Club

Domestic Art



MISS ALLEEN WILSON, Instructor.

Helen Batchelder
Marie Early
Mrs. Sadia Wood
Esther Zachary

The Owl Club

Art School



China Painting

Winnifred Blankenship
Angela Buzard
Carmen Coffing
Mrs. E. A. Davis
Emily S. Dexter
Marie Early
Blanche Ensley
Pansy Haddon
Laura Halley
Bessie Hankins

Pauline Harper
Vera Herring
Thelma Hutchinson
Mrs. W. J. Imes
Blanche Martin
Katherine McGill
Neva Michael
Mrs. J. F. Poland
Alice Quisenberry
Thelma Silvey

Dorothy Silvius
Clara Sloan
Vinita Trice
Ina Wachtel
Eva Wilkinson
Ethel Williamson
F. Esther Wilson
Mrs. H. A. Wyckoff
Esther Zachary

Pastel

Mrs. E. A. Davis
Laura Halley
Vinita Trice

Water Color

Ruth Diven
Mrs. L. M. Roberts
Vera Shaffer

Basketry

Esther Bertrand
Alice Bridges
Ruth Ellwood

Florence Moore
Dorothy Silvius
Lucile Wiley

The Owl



WHO'S WHO

JOHN SCHWEPPE—Business Manager of Criterion.

THELMA RILEY—President of Y. W. C. A. 1st Semester.

IVAN R. BRAY—Manager of Athletics.

RUTH O. BRAY—Editor-in-Chief of Owl Captain of Girls Basket Ball Team.

LOUIS PICKETT—President of Y. M. C. A. 2nd Semester, Business Manager of Owl.

JOE KNIERIM—Owl Cartoonist.

GEORGE SHARP—President of Glee Club, President of Excelsior's 1st Semester, Captain of Foot Ball Team.

BLANCHE SAMS—President of Aesthesian Literary Society, President of Ladies' Glee Club.

ALICE BRIDGES—President of Ruthean Literary Society 1st Semester.

VALERA SMITH—President of Ruthean Literary Society 2nd Semester.

CLYDE CROWDER—President of Y. M. C. A. 1st Semester.

JOHN HARMON—President of Adelpian Literary Society 2nd Semester.

WILSON THOMAS—President of Adelpian Literary Society 1st Semester, Editor-in-Chief of Criterion.

FRANK LAWRENCE—Captain of Baseball Team.

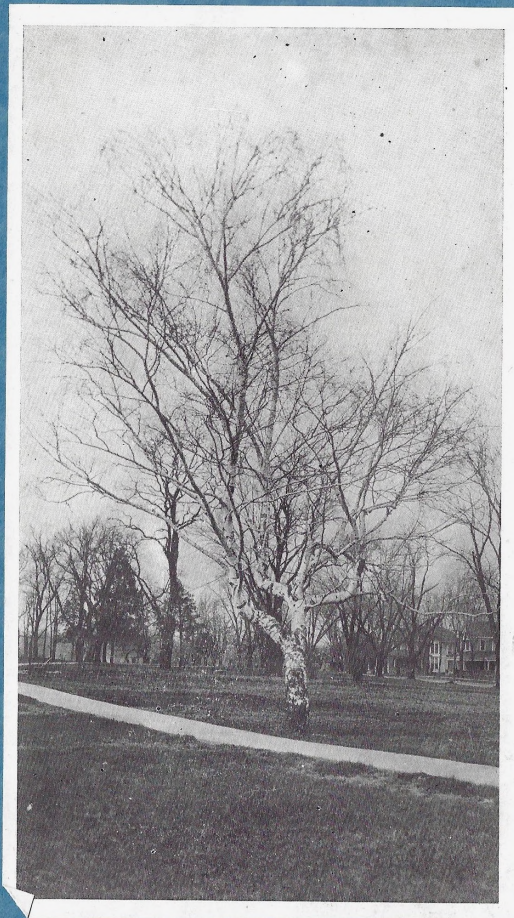
CLAIR EBERHART—Captain Men's Basket Ball Team, President Excelsior Literary Society 2nd Semester.

BERT BURROWS—President of Student Body.

BARBARA DICKINSON—President of Y. W. C. A. 2nd Semester, President of Aesthesian Literary Society 2nd Semester.

DUKE MEDLEY—Captain of Track Team.

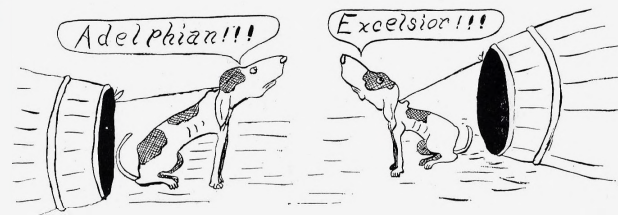
SELDON HUMPHREY—President of Ministerial Association.



BOOK THREE
ORGANIZATIONS

The Owl

SOCIETIES



The Owl

Ruthean Literary Society



The Owl

Ruthean Literary Society

MOTTO: "Vita sine litteris mors est"

COLORS: Cardinal and Straw.

FLOWER: Red Rose

Society Officers

	First Semester	Second Semester
President	Alice Bridges	Valera Smith
Vice-President	Vera Shaffer	Helen Bothwell
Secretary	Lucille Wiley	Kathryn Richardson
Treasurer	Olive Smith	Vera Shaffer
Pianist	Alice Englehart	Anna Helen Corken
Chorister	Ruth Bray	Mary Bieber
Chaplain	Thelma Riley	Vera Shaffer
Sergeant	Lucille Campbell	Hildred Loew
Critic		Ruth Bray
Foreign Minister		Lucille Wiley
Curators	Vera Shaffer Vernita Ruddell Helen Bothwell	Marietta Dillener Alice Englehart Ruth Herzog

Society Roll

Twila Atherton	Anna Helen Corken	Thelma Riley
Mildred Beeks	Virginia Coffing	Vernita Ruddell
Ruth Bray	Marietta Dillener	Grace Strine
Angela Buzard	Frances Englehart	Clara Sloan
Alice Bridges	Blanche Ensley	Olive Smith
Mary Bieber	Lyllis Farnsworth	Valera Smith
Ruth Bieber	Laura Halley	Vera Shaffer
Bessie Buck	Nora Harris	Ada Williamson
Bernice Bothwell	Hildred Loew	Lucille Wiley
Helen Bothwell	Emily Prugh	Kathryn Richardson
Lucille Campbell	Louise Robison	



Adelphian Literary Society



Adelphian Literary Society

MOTTO: "Essa quam videri"

COLORS: Blue and White.

FLOWER: Hyacinth

Society Officers

	First Semester	Second Semester
President	Wilson Thomas	John Harmon
Vice-President	Herbert Dieterich	Jesse Lyle
Secretary	Finis Frazier	Eugene McCoy
Treasurer	John Harmon	Ivan Bray
Chaplain	Paul Osman	Seldon Humphrey
Chorister	Paul Osman	Paul Osman
Pianist	Enos Stambach	Enos Stambach
Attorney	Rex Orr	Wayne Silvius
Critic	Bert Burrows	True Taylor
		Wilson Thomas
Curators	Frank Lawrence	True Taylor
	Ivan Bray	Wilson Thomas
	Eugene McCoy	
Committee on Excuses	Joe Knierim	
	Frank Bennett	
	Donald McGlumphy	

Society Roll

L. K. Amentrout	John Glendenning	Fred McFarland
Frank Bennett	Burton Gross	Erman Miller
Everett Blackman	Mark Green	Rex Orr
R. E. Bourquin	John Harter	Paul Osman
Ivan Bray	John Harmon	Lowell Selby
William Brumbaugh	Seldon Humphrey	Roy Schneider
A. H. Burrows	Kendrick Hunt	Edgar Schonk
Charles Carson	John Hill	Wayne Silvius
Carl Campbell	Leslie Irwin	Raymond Spurlock
Bayard Conklin	Otis Jackson	Enos Stambach
Stuart Conklin	Byron James	True Taylor
Newell Diven	Herbert Kimes	Wilson Thomas
Fred Dildine	Jack Ledgerwood	Dean Warner
Herbert Dieterich	Frank Lawrence	Pearle Walton
Claude Drown	Jesse Lyle	Lee Wightman
Glenn Filley	Loren McCracken	Leroy Williams
Finis Frazier	Eugene McCoy	Romaine Wood
	Donald McGlumphy	



Aesthesian Literary Society



Aesthesian Literary Society

MOTTO: "Be not satisfied with present attainments, for when growth ceases decay has already begun."

COLORS: Purple and Gold

FLOWERS: Purple Astor and Golden Rod.

Society Officers

	Second Semester	Second Semester
President	Barbara Dickinson	Blanche Sams
Vice-President	Velma Seaton	Christine Kendall
Secretary	Blanche Sams	Neva Michael
Treasurer	Martha Suetterlin	Pearl Bryant
Sergeant	Irene Wamsley	Mary Hartsook
Literary Critic	Edith Gibson	Barbara Dickinson
Music Critic		Mary Hartsook
Society Editor	Edith Gibson	Edith Gibson
Chorister	Blanche Sams	Hattie Hawkinson
Pianist		Nelle Poe

Society Roll

Opal Ashburn	Mary Hartsook
Lillie Ballard	Christine Hinkley
Esther Bertrand	Christine Kendall
Nova Bryan	Lois Kennish
Pearl Bryant	Elsie Ingram
Mable Colaw	Edna Logue
Mrs. C. S. Crowder	Blanche Martin
Barbara Dickinson	Neva Michael
Ruth Diven	Florence Miller
Alice Douglas	Mary McKee
Florence Ensign	Nelle Poe
Mary Enriken	Blanche Sams
Stella Grinstead	Thelma Silvey
Edna Garner	Martha Suetterlin
Neva Garner	Ardis Sturgis
Berthea Graeff	Gertrude Theilman
Edith Gibson	Irene Wamsley
Pansy Haddon	Loyce Wise
Grace Hainline	Esther Zachary
Hattie Hawkinson	



Excelsior Literary Society



Excelsior Literary Society

LOTTO: "Sauviter in modo, fortiter in rei."

COLORS: Green and Pink.

FLOWER: Pink Carnation.

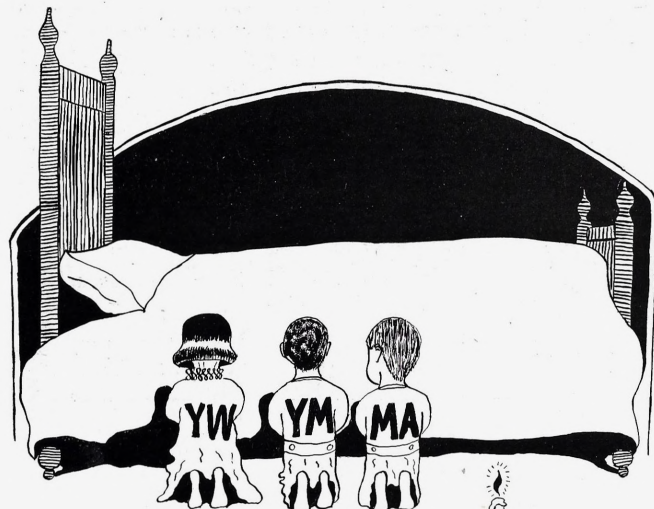
Society Officers

	First Semester	Second Semester
President	George Sharp	Clair Eberhart
Vice-President	Louis Pickett	K. W. Kim
Secretary	Clyde Urban	Charles Burgess
Treasurer	Wick Sharp	Fayette Rapier
Chorister	Kenneth Crawford	Harry Thomas
Chaplain	Clyde Crowder	Loren Rapier
Pianist	Mack Warren	Kenneth Crawford
Critic	Claud Beard	Louis Pickett
Sergeant	John Schweppe	George Sharp
Curators	Clay Davis David Dillman	Harry Thomas Clyde Crowder Wick Sharp

Society Roll

James Bate	Louis Pickett
Sammie Bauer	Fayette Rapier
Ed Cooley	Loren Rapier
Lewis Cooley	Alvis Runyan
Kenneth Crawford	Junior Sanders
Clyde Crowder	Irl Satterlee
Clay Davis	John Schweppe
Dave Dillman	Fernon Sewell
Clair Eberhart	George Sharp
Clinton Farmer	Wick Sharp
Harold Farmer	George Spurlock
William Hinkley	Allison Skinner
Ray Holder	Harry Sloan
W. J. Imes	Clyde Taylor
K. W. Kim	Harry Thomas
Orr Kirkpatrick	Clyde Urban
Allan McMahan	E. M. Waugh
Duke Medley	William White
Sam Moxley	Lawrence Wheeler
Eckles Park	Eugene Wood
Horace Perry	Garl Woods
Stanley Phillips	

The Owl



RELIGIOUS

The Owl

Y. M. C. A. Cabinet



Officers

	This Year	Next Year
President	Thelma Riley	Barbara Dickinson
Vice-President	Ruth Diven	Duth Diven
Secretary	Blanche Sams	Martha Suetterlin
Treasurer	Vera Shaffer	Thelma Riley

Chairmen of Committees

Devotional	Alice Douglas	Ada Williamson
Bible	Ina Wachtel	Alice Douglas
Missions	Barbara Dickinson	Pearl Bryant
Intercollegiate	Martha Suetterlin	Ruth Herzog
Social	Ruth Bray	Anna Helen Corken

The Owl

Y. M. C. A. Cabinet



Officers

	This Year	Next Year
President	Clyde Crowder	Louis Pickett
Vice-President	James Bate	Clay Davis
Secretary	Clay Davis	Wick Sharp
Treasurer	Louis Pickett	Charles Burgess

Chairmen of Committees

Devotional	A. H. Burrows	Donald McGlumphy
Bible and Missions	Donald McGlumphy	True Taylor
Membership	James Bate	Clay Davis
Social	Wilson Thomas	Clyde Taylor
Gospel Team	Lawrence Wheeler	Raymond Spurlock
Employment	Wick Sharp	
Sick Visitation		Ed Cooley

The Owl

Ministerial Association



Officers

President	Seldon Humphrey
Vice-President	A. H. Burrows
Sec'y. and Treas.	Raymond Spurlock
Critic	Dean Jones
	Dean Jones
	Prof. Corn
Program Committee	A. H. Burrows
	Joe Knierim
	Seldon Humphrey

The Owl



Striking a
New Note



The Owl

Ladies Glee Club



President	-	-	Blanche Sams
Sec'y. and Treas.	-	-	Alice Douglas
Business Manager	-	-	Thelma Riley

1st Soprano
Blanche Sams
Mary Bieber
Bernice Bothwell
Hattie Hawkinson
Emily Prugh

2nd Soprano
Helen Bothwell
Pauline Harper
Ruth Bray
Lucile Wiley
Lyllis Farnsworth
Cora Sams
Christine Hinkley

1st Alto
Elsie Ingram
Ruth Herzog
Thelma Riley
Ruth Bieber

2nd Alto
Sadie Wood
Olive Smith
Alice Douglas

Pianist
Grace Strine

The Owl



Men's Glee Club

President	-	-	George Sharp
Sec'y. and Treas.	-	-	Rex Orr
Business Manager	-	-	Wilson Thomas
Pianist	-	-	Enos Stambach

1st Tenors
 Richard H. Thomas
 Wick S. Sharp
 Enos T. Stambach
 Clyde Taylor
 Byron James
 O. Rex Orr

2nd Tenors
 George W. Sharp
 Lewis Cooley
 Edward Cooley
 Herbert Dieterich
 Paul Osman
 Bayard Conklin

Baritones
 Finis Frazier
 Wilson Thomas
 Ralph Orr
 Donald McGlumphy
 Erman Miller
 William Brumbaugh

Basses
 Albert Burrows
 Kenneth Crawford
 Allen McMahan
 Mark Green

The Owl

Ladies Quartet



BLANCHE SAMS—First Soprano
 PAULINE HARPER—Second Soprano
 ELSIE INGRAM—First Alto
 OLIVE SMITH—Second Alto

The Owl

"Cameron" Quartet



HARRY THOMAS—First Tenor
 GEORGE SHARP—Second Tenor
 FINIS FRAZIER—Baritone
 KENNETH CRAWFORD—Bass

The Owl

College Band



George Sharp	Orr Kirkpatrick
Leslie Irwin	Wilson Thomas
Paul Osman	Lee French
Fred McFarland	Harry Sloan
Duke Medley	Erman Miller
Kenneth Crawford	Ed Schonk
Mark Green	Frank Lawrence

The Owl

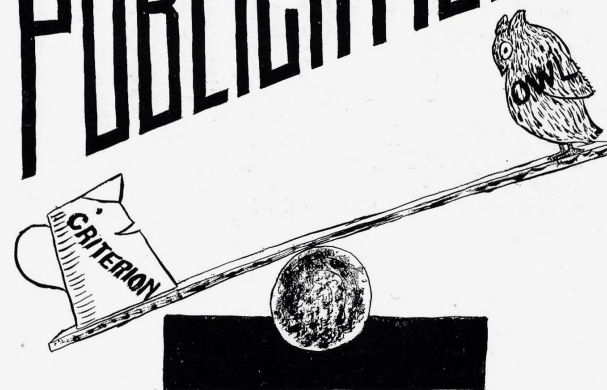
College Orchestra



Bernice Bothwell	Samuel Bauer
Neva Garner	Lucile Wiley
Elsie Ingram	Frank Lawrence
Emily Prugh	Angela Buzard
Lyllis Farnsworth	Wesley Kelley
Mary McKee	Erman Miller
Florence Miller	George Sharp
Nelle Poe	

The Owl

PUBLICATIONS



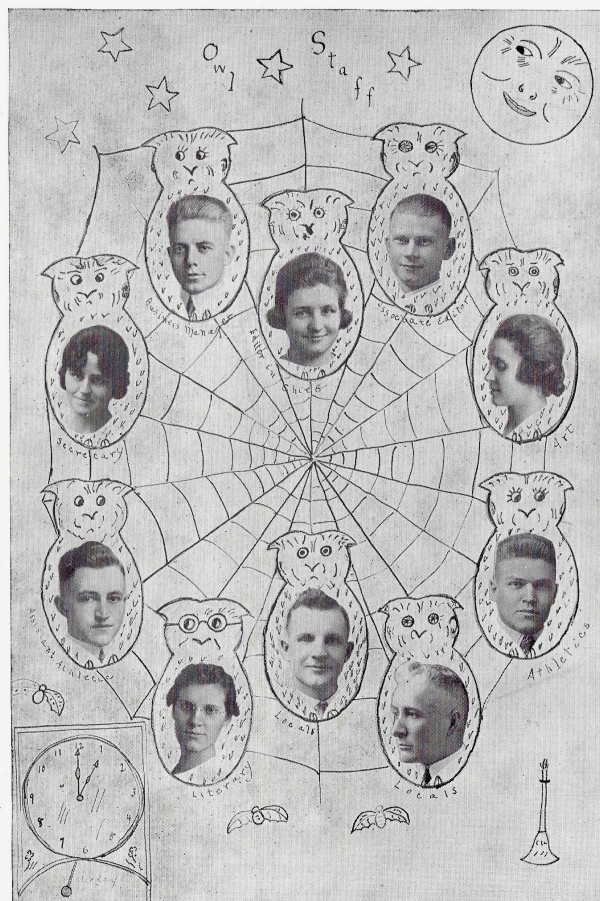
The Owl



Criterion Staff

Editor-in-Chief	-	-	Wilson Thomas
Business Manager	-	-	John Schweppe
	-	-	Thelma Riley
Associate Editors	-	-	Vera Shaffer
Advertising Manager	-	-	Dave Dillman
Assistant Advertising Manager	-	-	Duke Medley
Sport Editor	-	-	John Harmon
Local Editors	-	-	Barbara Dickinson
	-	-	Harry Thomas
Exchange Editor	-	-	Olive Smith
Circulation Manager	-	-	Edith Gibson
Assistant Circulation Mgr.	-	-	Donald McGlumphy

The Owl



The Owl

Extracts of a speech by Isaac S. Corn in Chapel on Owl Subscription day.

WHY BUY AN OWL?

First, why should a freshman buy? When college opened last fall I was kept awake nights by an unusual number of cows bawling around town. Upon reflecting a bit I discovered that it was because an unusual number of freshmen had come to town. An actual freshman is a good deal like the proverbial freshman—somewhat verdant. Now, freshmen, your pictures will be in the Owl. So buy an annual and keep your memories green. It will also help you to see yourself as others see you—especially as the cows see you.

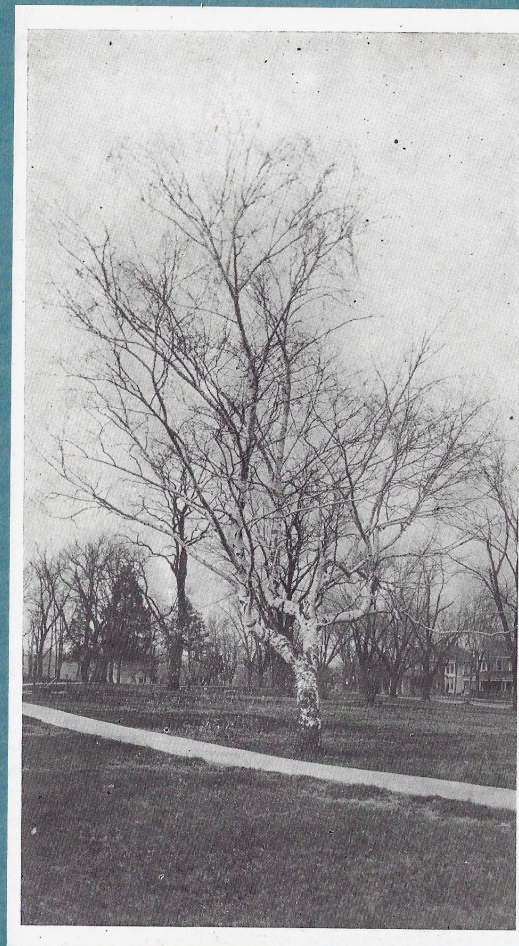
To the Sophomores a suggestive word. Jim Crow once said, "It doesn't take much remodeling to make a fool of a sophomore." Now a sophomore is just a remodeled freshman. It is enough to be a sophomore so do not make worse fools of yourselves by neglecting to buy an Owl.

To the juniors a brief word. You should buy an annual because your class produced the thing. He is a good physician who can take his own medicine.

To the seniors a brotherly word. There is only one difference between a junior and a senior, that is, a senior has been in college a year longer than a junior—he doesn't know any more. Now, seniors, your pictures will be in the annual. You of all men should buy an annual in order to be able to give the world some evidence that you went thru college. This is highly important in view of the lack of other evidence.

And now, last but not least, a fatherly word to the members of the faculty. You should buy an annual in order to preserve a collection of stale jokes accredited to you which you never had the nerve to tell. But you should buy the Owl more especially because you may some day be accused of not having belonged to the producing class, in which case it will be very comforting to yourself and convincing to your accuser for you to be able to point to the picture of the seniors in your annual and exclaim, "Look at those cabbage heads which I helped to produce."

Finally laying all serious thoughts aside, everyone should buy an annual because it will preserve college days after they are past—college days with all their friendships, associations, and pleasant memories.



BOOK FOUR
ATHLETICS

The Owl

ATHLETICS



The Owl



Football Squad 1919

The football team of 1919-20 was a decided success from start to finish.

It seems that Wesleyan has become indifferent to championships in some of the college sports but a winning football team for three years straight causes us to erect our spines and take observations.

Eight conference games and no defeats, two outside games and no defeats with only seven points scored against us in a year when every college had a good team through the return of so many service men, is a splendid record. No other Missouri college team has played as many conference games, and no other team went through the season undefeated. The outstanding phenomenon the country over this season has been the upsets, the ups and downs of favorites. Not many prominent colleges or universities have unbeaten teams.

So all honor to our champion team and Coach Davis. Their combined skill and devotion have brought Wesleyan pleasure and fame and helped to forge an enthusiastic spirit for the growing year.

The schedule and scores follow:—

Sept. 26	Wesleyan	33	C. B. C.	0
Oct. 3	Wesleyan	28	Trenton Elks	0
Oct. 10	Wesleyan	28	Warensburg	0
Oct. 17	Wesleyan	53	Westminster	0
Oct. 24	Wesleyan	47	Missouri Valley	0
Oct. 31	Wesleyan	19	Kirksville	0
Nov. 7	Wesleyan	7	Central	0
Nov. 14	Wesleyan	20	Tarkio	0
Nov. 22	Wesleyan	14	Springfield	7
Nov. 27	Wesleyan	7	Jewell	0

The Owl



Real Champions

EARL A. DAVIS (Lefty) has just finished his third year as coach of Missouri Wesleyan. He came here from Phillips University in the fall of 1917 and since coming here has won the heart of every true sport that knows him. He played football at South Kentucky College 1906, played baseball in the Arkansas League 1909-1910-1911. Our coach has turned out a championship football team each year he has been here and has succeeded under trying conditions. To know him is to love him, and standing for such a high grade of athletics as he does, he certainly is worthy of all our love. Altho offered more salary in other schools, we are glad to say he has agreed to stay with us for three more years. Under his leadership athletics at M. W. C. are sure to prosper.

IVAN R. BRAY, Maysville, Mo. Manager of Athletics the past year.

Bray made his letter in football in the season of '17, but on account of injuries sustained that season was unable to play this season. The student body elected him manager of athletics this year and we have never had a better manager. Ivan has done everything possible to better athletics in our school and we will miss him next year as manager altho we will welcome him as a member of the 1920 squad.

GEORGE SHARP Captain 160 pounds.

George has finished his fourth year as a member of the Wesleyan team, and this last year was captain of the squad. George made the second all-state team and well deserved the honor. He is a clean, hard fighter and could always be counted on to do his part. George made a leader that we all well remember with pleasure. Sorry this is his last year.

The Owl



JESSE LYLE Quarter 150 pounds.

Lyle was the unanimous choice for all-state quarter, also made captain of this year's mythical eleven. He is captain-elect for 1920. He is heavy and runs a team fast and is an ideal leader. He is a good broken field runner as well as a No. 1 passer. Under his generalship we are expecting great things of the team of 1920.

WAYNE SILVIUS Center 175 pounds.

Silvius came here from Drury College and was one of the hardest scrappers in the state. His aggressiveness more than made up for his lack of weight and he certainly deserved the title given him. Silvius was always dreaded by every opponent in the conference and in every game proved himself to be a tower of strength. We are glad he will be with us another year.

BAYARD CONKLIN Tackle 210 pounds.

Pete played his last year with Wesleyan this season and altho his play was not as good as in previous years, he landed a berth on the all-state. Pete has done the punting and drop kicking for three years. Welcome to the man that can fill his shoes.

HAROLD C. EBERHART Right End 150 pounds.

"Eb" has just finished his fourth season with Wesleyan, and during his stay here has made the all-state team all four years. He has an enviable record, one of which all of us are proud. He was always down on punts and a good receiver of passes, a very aggressive player. We are sorry "Eb" has finished his stay with us.

The Owl



EUGENE McCOY Left Half-back 160 pounds.

Gene was universally spoken of as the best all-around man on the team. He could return punts so well that this won him a place as safety man and time and again he pulled some sensational plays in breaking up passes. He always spilled his man when running interference. We are fortunate that Gene has two years with us.

HAROLD FARMER Full-back 170 pounds.

Harold would have been a unanimous choice for the first all-state team if he had not received injuries that kept him out of most of the games. Farmer was the shiftest man on the team, with a powerful build. He was hard to beat on interference and could carry the pigskin well. He was a fast and low, hard and sure, tackler with wonderful ability to break up passes. We are glad Harold will be with us another year.

LESLIE IRWIN Guard 175 pounds.

This was "Joe Pick's" second year, as a member of our team, and he is a player of ability. The pep he displayed in the line saved us more than once at critical times. He was always to be depended upon to fill a large gap in the line. Joe was considered one of the stubbornest fighters in the state and could always be counted on to deliver the goods. Joe has two more years with us. Great things are expected of him another year.

GLEN FILLEY End 150 pounds.

Filley was a steady player that was fast, fearless and heady. He was always after the ball and was a sure tackler. His ability to get down on punts was a sensation and he was capable of spilling the defense whenever needed. He has two more years with us.

The Owl



JOHN HARMON Center and Guard 165 pounds.

John made all-state center in 1917 but he came back from France a little bit weakened by his experiences and could not play up to his old standard but he was a man that put forth all that he had. He will make a powerful player another year and we are glad he will be with us.

SHORTY LAWRENCE Quarter and Half 135 pounds.

Shorty finished his last year with us and when we lose him, we are losing a valuable man. Shorty was handicapped by his lack of weight but he more than made up for it with fight. He was one of Possum Pixlee's products and played here in 1916. He was unable to enter several games on account of injuries, but whenever in the game showed excellent generalship and ability and could be counted on to do whatever he undertook.

DUKE MEDLEY Half-back 140 pounds.

Medley was light but one of the fastest pigskin luggers in the state. Duke's physique was such that he could not plunge the line with very much success, but when it came to circling ends, he is not to be excelled. Too much credit cannot be given him for the help he was to the team. Great things are in store for Medley in the athletic line. We are glad he has two more years with us.

FRED MCFARLAND Full-back and Half 175 pounds.

Fred hails from Altamont, Missouri, and is a fearless, stubborn fighter with an ability to back up the line that was never questioned. Fred is ideally built as a back field man, and has plenty of speed. He was a good man to break up passes and had ability to receive them. Mack was a sure ground gainer and when called upon to carry the ball, the line always moved forward. Glad he has three more years with us.

The Owl



DAVID DILLMAN Half 150 pounds.

Dave was a little underweight but at that he managed to make his letter. When in the game he always made good and next year we are expecting great things from him. This was his first year on the squad.

RAY HOLDER Tackle 200 pounds.

Weighing 200 pounds and being six feet in height he has a wonderful physique. Ray has ability to play football but is slow to cut loose all he has. He played his best games at Warrensburg and Kirksville. He will be with us again next year.

HERBERT DIETERICH Guard 150 pounds.

Herb was a game fighter, always displaying a brand of football that showed he was giving all he had. Herb was a good man when it came to tackling and in backing up the line. He always managed to open a hole for the backfield men and was a valuable man indeed. Herb has two more years with us.

BERT BURROWS Tackle 185 pounds.

Bert was captain of last year's team and made the all-state in 1917. At the beginning of last season he was operated upon and he never fully recovered so was unable to put on a suit this year until a day or so before our big game with Jewell and then he could not stay out. When things began to be critical Thanksgiving day, Burrows was given a chance and entered the game. His entrance into the game had its effect and we give him all credit due him. That was the last time we will see him in action as a Wesleyanite.

The Owl

The Last Whistle

(Dedicated to those members of the
1919 football team who have played
their last game for Wesleyan.

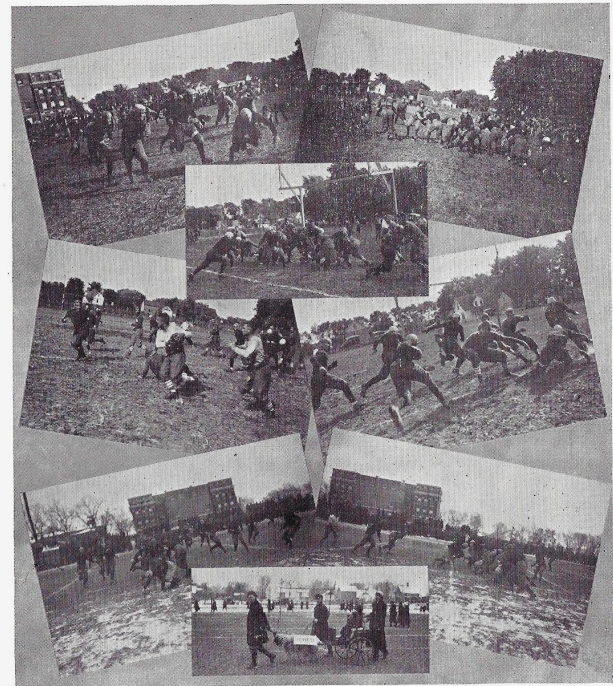
The whistle's still,
No more the crack,
Of signals from the quarterback,
Will plunge us forward, muscles tense.
To pierce the foemens strong defense,
Our hearts athrill.

No more will we with fearful glance,
Measure each grimly won advance,
Seeking each down to hear again.
Those magic words of "first and ten."

Our day is past,
And now we come,
The greater game of life begun,
Where each alone must buck the line,
And, beaten back, with courage fine
Again must try, and yet again
Tho every play foretells the end.
Where battered, bruised, and sick within,
We still must hope to somehow win,
That they may say when flies the soul,
They played the game and won the goal.

—H. F. L.

The Owl



The Owl

Girls' Basket Ball



The Owl

Girls' Basket Ball

From the standpoint of perfecting a machine nearly perfect in co-operation and co-ordination; a machine in which each component part was of vital importance to the functioning of the whole, the girl's basketball team of 1919-20 was a brilliant success.

Because of conflict in dates it was possible to secure only two games with out-of-town teams. The local high school team served well as opposition for practice, and their help was appreciated.

Both games were played against the Kansas City Junior College of Kansas City, and both resulted in victories for that team, with the score so close that the suspense was awful. On February 18th, our girls went to Kansas City and came home with the small end of an 18-15 score.

Kansas City Junior College was promptly invited to our gym for a return game and came on March 12, when they again defeated us by a three point margin the score being 22-19.

Had we not been unfortunate in dates we are confident that our representatives would have shown a clean pair of heels to any co-ed team in the state and would have made the teams from the Girl's Colleges look and look carefully to their laurels.

This was Prof. Wyckoff's first year as coach of the Girl's team and from the stuff he put over we are optimistic for next year.

Ruth Bray—Forward—Always a sure shot. On offense or defense Ruth was always to be counted on.

Christine Kendall—Forward—We have seen few girls display the floor work which is habitual with Christine.

Lillie Ballard—Second Center—Lillie was the individual star of this season's team. She is a versatile player, and with Bray will probably form the nucleus for next year's team. She has been described as "a flash, hard to see much less keep up with."

Olive Smith—Center—Smith's work as jumping center was good. It is a pleasure to learn that she'll be back next year.

Gertrude Thielman—Guard—A dependable guard. Always there when needed.

Marie Early, Lyllis Farnsworth—Guard—We had too many good players for the number of positions so it was necessary to divide the second guard position between this pair of constellations.

The Owl

Boys' Basket Ball



The Owl

Boys' Basket Ball

The Basketball team of 1919-20 was far from satisfactory for several reasons. There was an exceptionally hard schedule to be played off by the smallest team in the history of Wesleyan, and with only one of last years team reporting a six days road trip early in the season was too much for a comparatively green team. But with four letter men returning next year, the outlook is good for a real team.

The letter men this year are:

Clair Eberhart, Captain, forward and guard. Eber is an all-round man and is serving his fourth year with Wesleyan. We hate to lose men like Eberhart. Our best wishes go with him. He will make good wherever he goes.

Ray Holder, Center. He has the ability and size and with this, a good eye. He should be heard from in the future basketball at M. W. C.

Glen Filley, Guard. The hardest worker and the gamest guard in the M. I. A. A. What he lacks in ability he makes up in fight. He will be seen in action again next year.

Leslie Irwin, Forward. Better known as Joe Pick, comes to us from Jamesport, and he plays a hard, consistent game of basketball. He is another all-round man playing baseball and football.

Frank Lawrence, Forward. A midget in size but a hard worker and a scrapper. Shorty graduates this year and is interested in coaching. If we lose such men we like to do it by graduation.

Charles Burgess, Guard and Forward. Another small man but beyond a doubt, the find of the season; fast, full of fight, and possesses a good eye for the basket. Will serve three more years with us.

The Owl

Base Ball



Leslie Irwin	Junior Sanders
Wayne Silvius	George Sharp
Frank Lawrence	Ray Holder
Clair Eberhart	Coach Davis
Charlie Burgess	Clay Davis
Bayard Conklin	Raymond Spurlock
Pearly Walton	George Spurlock
Herbert Dieterich	Harry Sloan

The Owl

Track



"In life's great race where all must run, we cannot all be number one; but someone, when the race is done must be, an 'also ran' and if the man who lost can smile and say, 'I'm beaten by a mile, but still I'm glad I made the trial,' he's proved himself a man.' "

Wilson Thomas	Fermon Sewell
Duke Medley	Harry Sloan
Jesse Lyle	Herbert Kimes
Allan McMahan	Fred McFarland
Dave Dillman	Coach Davis
Harold Farmer	George Sharp
Glenn Filley	Ray Holder
Everett Blackman	Bayard Conklin
Mgr. Tray	

The Owl

Physical Education



GRACE HENDERSON, Instructor.

Class Roll

Angela Buzard	Edna Garner
Ruth Bray	Harriet Smith
Lucile Wiley	Helen Bothwell
Olive Smith	Helen Hainline
Elsie Ingram	Pauline Harper
Christine Kendall	Twila Atherton
Neva Michael	Anna Helen Corken
Esther Bertrand	Mary McKee
Lillie Ballard	Christine Hinkley
Pansy Haddon	Virginia McCue
Mary Wolfe	Mary Enriken
Opal Ashburn	Helen Batchelder
Kate Richardson	Violette Batchelder
Valera Smith	Florence Miller

The Owl

Aesthetic Dancing

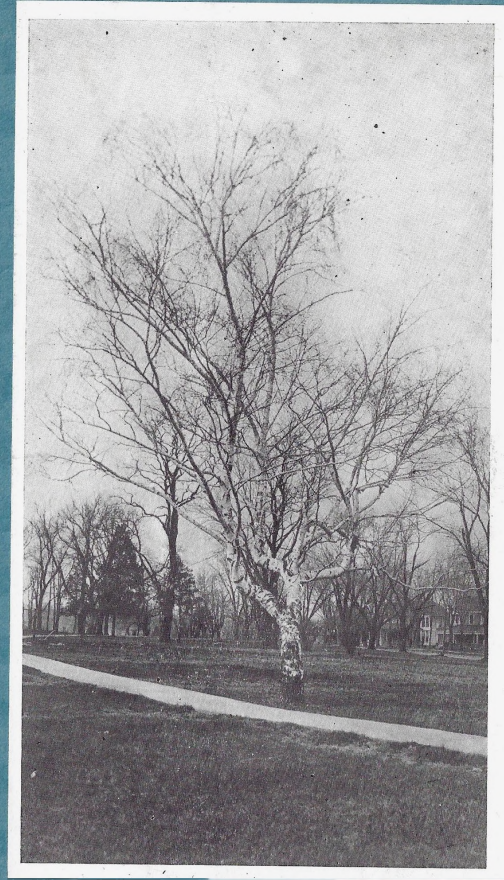


The Owl

"III" Association



Bray Mgr.	Football
Dieterich	Football
McFarland	Football
Conklin	Football
Harmon	Football
Holder	Football
Spurlock	Football
Lawrence	Football
Irwin	Football
Rising	Football
Burgess	Basketball
Sanders	Basketball
Farmer	Football
McCoy	Football
Ellis	Football
Poland	Football
Skinner	Tennis
Lyle	Football
Medley	Football
Dillman	Football
Silvius	Football
Filley	Football
Sharp	Football
Eberhart	Football
Wheeler	Football
Schweppe	Tennis
Coach Davis	



BOOK FIVE
STUDENT LIFE

The Owl



JOKES

The Owl

SEPTEMBER

8. Students arrive and register.



JUST ARRIVED

9. More students.
10. Y. W. C. A. holds annual "get acquainted social."
11. Y. M. "Stag Social."
12. Joint reception of Y. M. and Y. W.
14. Special League service for students.
15. Adelpians elect officers.
16. Mr. Meserve, Y. M. C. A. Secretary gives interesting talk in school.
18. Epworth League entertains Cameron High and Wesleyan students.
22. Society enthusiasm runs high.
24. Rutheans give annual reception for new girls in form of Backward Party.
25. Excelsiors give open program and reception for new members.
26. Wesleyan starts season by defeating C. B. C. on their gridiron by a score of 33-0.
27. Aesthians entertain new girls.
27. Adelpians entertain new men.

OCTOBER

2. Rutheans initiate new pledges.
3. First football game on home field. Defeat Trenton Elks with score of 28-0.
5. Band organized.
6. M. W. C. faculty is a real live bunch this year, and start the season with a weenie roast.
7. Rutheans and Adelpians entertain new members with marsh mallow and weenie roast.

8. Miss Elizabeth Lawson, student Secretary of Y. W. C. A. is a guest of association.
10. We did beat Warrensburg 28-0.
11. Clair Eberhart is elected to steer Senior craft through the storms of 1920.
14. Wilson Thomas elected editor-in-chief of Criterion staff.
15. The distinguished celebrities of M. W. C. form a dramatic club. Miss Herring and Archie Wood "Step out" to Aesthesian program.
16. Miss Frances Ingram gives recital in Auditorium.
17. "Too bad Westminster, but we feel pretty good, and believe in letting the town know how we feel." Score 53-0.
18. Our Second Team defeats Palmer College, 20-0. "Hurrah for the Scrubs."
20. "Did you find your name in the first edition of the Criterion?"
21. C. A. Leedy and Judire Burnes dispense with court, to attend chapel. Another substitute for Prof. Corn.
23. A number of students and faculty go to Kansas City to attend Grand Opera.
24. To the Junction at five a. m. to speed the football boys on their way to beat Missouri Valley, 47-0.
25. Where's the football team for 7:40 classes?
27. The Owls hold their first nightly vigil.
28. Dr. Harris Franklin Rall of Evanston, Ill., gives very entertaining and profitable chapel address.
30. First Ruthean open program. "Did you see my knees knocking together?"
31. Faculty give masquerade party. Ask Dave and Tooty how to recognize the girls. Another hard team defeated. Our boys win from Kirksville Normals, 19-0.

NOVEMBER

1. Wiley bunch give an "at home." "Go slow on whipped cream, Jesse."
- Prof. Corn wishes a new date to be added to the calendar, Oct. 22.
2. Pete goes to church. Three cheers for Annie.

The Owl



The Owl

3. Rutheans and Adelphians discuss and plan new furnishings for their hall. Now for work in earnest.
 4. Dr. Harmon and Dean Jones attend meeting of the college union. M. W. C. unanimously voted in as a member.
 5. Adelphian open program. "I bet I made a lasting impression on the Redpath-Horner representative."
 7. We surely did show Central Eagles how to play football to the tune of 7-0.
 10. Cameron in darkness, but what do the Owls care? Candle parties in vogue for how can they expect us to study?
 11. Best way to get a holiday is to lock teachers out. Strikes are popular now-a-days.
 12. "Did you ever eat so much in your life as you did at that chicken dinner at the church?" M. W. C. Quartette goes to St. Joseph.
 13. Faculty party.
 14. Some of the girls go along to help the football team romp on Tarkio. Score 20-0. Jesse makes his record 90 yard run for a touch down.
 17. Royal Rooters and Students have big pep meeting at H. S. Auditorium. "Were backing you strong Wesleyan."
 19. Rutheans defeat Aesthesians in basketball game, 35-9. Booster trip for big game. Why don't they ever take the girls?
 20. Pep meeting and more plans for the "big" game. "Jewell, you're doom is sealed."
 21. Don't ever let your classes interfere with giving the team a good send-off. Well, we didn't.
 24. Rutheans finally convince the Aesthesian girls that they can play basketball. Score 21-7.
 25. Did you read the boycott on the bulletin board? GIRLS, BEWARE.
 26. Just one more day. Old students begin to flock in to see us beat Jewell.
 27. Did we Beat Jewell? Well, YES! The championship game is won. "My—wasn't it cold in those bleachers? But OH—What a Game."
 28. Dec. 1. Vacation. Mother's cooking sure tastes mighty good.
- DECEMBER**
3. Campaign for Owls. We hereby make Prof. Corn our head salesman.
 - Commercial club gives banquet at the Midland for football men and friends. Jesse Lyle is elected Captain for 1920.
 5. Wesleyan students go into the wood chopping business.
 7. Wayne Silvius C. Eberhart, Jesse Lyle and "Pete" Conklin chosen for the All-State first team.
 10. Girls are making frequent trips to town in preparation for Y. W. box supper.
 11. Heated meeting of the Student

- body. Faculty barred.
 13. Names are passed out in chapel for Xmas party. "Whose name did you get?"
 15. Ivan Bray goes to Kirksville for operation on knee.
 16. Pete entertains. As usual, we had a wonderful time.
 19. Good-bye, We're off for ten days at home.
 20. Wedding of Lora Assel and Richard De Hart, 6, a. m.
 - 21—20. Christmas Holidays.
 30. Prof. Withington treats the Ag. class. We wonder why?
 - Rolfie Douglas, who is attending Chicago U. speaks in chapel.
 31. A number of the students gayly watched the New Year in—"Is this 1920? Ask Lucille. Miss Moore mistakes the ringing of the old year out for the breakfast bell."
- JANUARY**
1. 1920. "How long do you suppose you'll keep those resolutions?"
 - M. W. C. Guild holds reception at the home of Mrs. Henry Ellwood.
 2. Mr. Packard presents football letter men with gold pencils.
 3. "Keep your hand on your heart, boys. This is leap year, you know."
 4. Miss Herring and Wick Sharp attend Student Volunteer convention at Des Moines.
 6. Prof. Withington is given a back seat in chapel but finally manages to scramble up to the front row. "You can't keep a good man down."
 7. Mansion boys stage a basketball game. Rah! Rah! Upstairs comes out victorious.
 9. Foster Poland represents the Commercial club of Cameron and presents the letter men with gold footballs. They all just had to make a speech. Being in love, Holder found it hard to say much.
 - Commercial students have party in Commercial rooms.
 12. Coach and Mrs. Davis entertain nineteen—nineteen champions—at a three course dinner.
 14. Dramatic club gives three plays—"Spreading the News," "The Lost Silk Hat," "A Xmas Carol."
 15. "Don't forget to have your pictures taken for the owl."
 17. Wasn't it a shame? Chilli defeated us 27-21.
 20. "I'm beginning to feel shaky about these exams. How about you?"
 22. EXAMS!
 23. EXAMS ! ! !
 24. EXAMS ! ! !
 26. Registration day. Several new students enrolled.
 - Surprise party for Finis Frazier, and he sure was surprised.
 27. Classes resumed—"Have you heard any returns yet?"
 28. Senator Johnson from California speaks at Park Theatre.
 29. Rutheans elect officers for the next semester.
 - Boys Glee Club goes to Bethel.

The Owl



The Owl

"Did you hear about the good pie?"
30. Semester Recital.

FEBRUARY

1. Bad news—"Cokes" have raised to ten cents per.
2. "Get up your courage and ask him to go to the tacky party. Do you suppose he'll say YES?"
3. English Literature class wanders around in hall hunting new class-room. Miss Havrestiche entertains the Flu.
4. Dark, Damp, Cloudy. Tacky party. Would you ever have thot he could look like that?
5. Orchestra rendered unusual program in chapel. Westminster basketball boys are here. We're not telling the score.
9. Boys start to charivari Prof. Withington, but never get there. Wayne loses his football, fountain-pen, etc. We wonder how, when and where?
11. Students go to hear Hon. Champ Clark at the High School.
12. We showed Jewell a good hard fight, rather surprised them, too.
13. Don't you miss the BOYS?
14. Election day—did you cast your maiden vote right? Virginia Coffing entertains some of her friends at a Valentine party.
15. Cantata at the church—curtains, towels, etc. pressed into service.
17. Upper classmen read edict in chapel stating that all Freshmen boys seen with a girl for a week, will be duly punished—and the fun begins.
18. Tooty appears with a clipped head and the Freshmen start on the war-path.
19. Big free-for-all on Third street. Five more Freshmen are shorn. Several upper-classmen receive like treatment.
20. Wesleyan-Drury game. "Nuf said." Aesthesian annual banquet at Odd Fellows Hall.
25. Nothin' doin' toda'.
26. Adelphean banquet at the K. of P. Home.
27. Up at 5:00—Off to Kansas City to play girls of K. C. J. C. They defeated us in a close hard game by a score of 18-15.

MARCH

1. Comes in like a lamb. St. Joseph boys play Basket ball here.
3. Darn the rain! Boys intended to go to Santa Rosa on a Glee Club trip, but—
10. Boy's Glee Club goes to Lathrop.
12. K. C. J. C. plays return game. Defeated us in a hard game by a score of 22-19.
17. Ruthen banquet at K. of P. Home. Ruthens make it a real Leap Year affair.
22. Prof. Olson states that he is losing his appetite. Somebody laughs.
23. Domestic Science girls serve tea in Y. W. room.

26. Boy's Glee Club starts on a four day trip giving concerts at Hna. Marceline, Meadville and Chillicothe.

27.—30. Spring vacation or aggravation.

APRIL

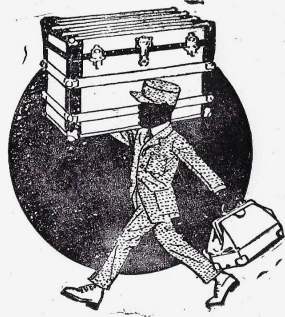
1. Girl's Glee Club to Kidder. Baseball team defeats Chillicothe at Chillicothe 13-6.
8. Orchestra renders programme in auditorium.
9. Prof. Corn entertains Bible students.
14. Campus day.
15. Faculty banquet.
26. Pearl Moore, Mary Entriiken assisted by Nova Bryan, soloist, and Olive Smith accompanist give Graduation Recital.
- 29.—30. Orchestra and Wesleyan students give the Opera, "The Lass of Limerick-Town" at H. S. Auditorium.

MAY

1. Our track team wins at Tarkio.
3. Men's Glee Club starts on week's trip.
- 10.—15. Track team enters meets at Jewell, Mo. Valley, Central, Westminster and Kirksville.
- 12.—13. May Music Festival.
17. Junior-Senior banquet.
- 20.—21. Inter-Collegiate Track meet.
24. President's Reception to Seniors.
27. Exams begin.
- Annual Exercises of Literary Societies.
28. Conservatory Recital.
29. Graduation Exercises of Commercial School.
30. Baccalaureate Sermon.
31. Art and Domestic Science Exhibit.

JUNE

1. Graduation Exercises of Academy.
2. Meeting of Alumni.
- Commencement Oration and Confering of Degrees.
- Aesthesian Lawn Fete.



The Owl



The Owl



The Owl



The Owl



The Owl



The Owl



CHRISTINE KENDALL
OWL QUEEN

PHOTO BY A. S. BROWN, CAMERON, MO.

ADS



Dr. Riley, The Man That Makes You See.

The Cameron Sun

PRINTERS AND PUBLISHERS

JOB PRINTING

OUR SPECIALTY

THE OWL IS ONE OF OUR PRODUCTS

ALL THE NEWS

of Cameron, including Missouri Wesleyan College, appears weekly in

THE SUN

Riley Grinds Your Lenses Right Here.

Cameron Steam Laundry

is equipped to do all kinds of high grade laundrying at very reasonable prices.

STUDENT BUSINESS ESPECIALLY
SOLICITED

Let us do your washing and save mother all this back breaking labor.

LAUNDRY CALLED FOR AND DELIVERED

Prompt Service

Investigate Our Prices

THE CAMERON TRUST COMPANY

—
Capital and Surplus
\$190,000
—

Does a general Banking Business. Pays interest on all deposits. We invite students and others to call on or write us for terms.

DEAN JONES

One thing which we don't understand
Is why such an unusual man
Should be hindered from fame
By so common a name
As Jones, please explain if you can.

Bring Me Your Broken Lenses.

Chase and Sanborn's Coffees—Club House Canned Goods
Red Top Flour

WILLIAMS GROCERY COMPANY

Purveyors of Fine Food Stuffs

Phone 520 M. R. WILLIAMS, Prop. Cameron, Mo.

Hildred Loew—"I don't see why every one
knows my mouth?"

Romaine Wood—"I do, because it is the pret-
tiest mouth in school, and you can't
cover it up."

Kirkpatrick—"I bet I could cover it up."

LOCATE IN

A COLLEGE ATMOSPHERE

An education is the greatest working capital you can give
your boy or girl. We have a fine list of farms and city property
for sale at reasonable prices, within easy reach of Missouri Wes-
leyan College. If you have a family to educate, see or write for
our complete list. We want to help you locate near the best
educational advantages in North Missouri.

ELLWOOD & MOORE

Reference, by Permission Office in
Cameron Trust Co. Sun Building
CAMERON, MO.

KANSAS CITY SCHOOL OF LAW

This school offers an opportunity for the student to secure a
legal education under the most favorable conditions.

HE MAY ENTER A LAWYER'S OFFICE

and thus obtain the practical experience so essential to success at the bar;
or he may carry on some independent work and thus be self supporting
while pursuing his legal studies. These ends are accomplished because
the school is located in a metropolis and because the sessions are all
principally at night. Course leads to the degree of LL. B. Tuition pay-
able in monthly installments or in advance. Write for catalog containing
full information.

E. D. Ellison, Elmer N. Powell, T. A. Costolow
Dean Secretary and Treasurer Registrar
Sessions fifth floor Nonquitt Bldg. 1013 Grand Ave.
Executive offices 718-719 Commerce Bldg.

I Can Duplicate Them In One Hour.

**THE FIRST NATIONAL
BANK**

Capital and Surplus
\$90,000

Your Business Solicited

J. A. RATHBUN.....Pres.
H. F. LAWRENCE.....Cashier

Cameron -:- -:- Missouri

We have Corn that is quite up-
to-date
Tho it hasn't grown much here
of late.
It is never called "pop"
And "sweet" it is not.
It's theological Corn
And first rate.

STUCKER & ELLWOOD

Cash Clothiers

FOR

Society Brand Clothes

Earl and Wilson—Shirts and Collars

Munsing Underwear

Satisfaction Guaranteed

Cameron -:- -:- Missouri

A FULL AND COMPLETE LINE

OF

Hardware, Stoves, Ranges,

Cream Separators,

Vehicles, Harness, Engines,

Farming Implements and Repairs.

O. E. CONNELL

Where Your Money Buys the Most

Cameron -:- -:- Missouri

Get Eye Glasses That Fit Your Face As Well As Your Eyes.

A born History teacher is ours,
A Sweede of most excellent
powers.

If you can't make him stop
He will talk till you drop,
If it takes him full twenty-four
hours.

PARRY & GORRELL

Clothiers of Gentlemen

The Place to Secure the Best
in
MEN'S FURNISHINGS

Cameron -:- -:- Missouri

PLACE BOYS

Groceries, Fruits and
Vegetables

Phone 291 - - Cameron, Mo.

BARBER SHOP

Basement of First National Bank

Service Guaranteed

Try Us.

G. F. ROBERTS, Prop.

DENNY BARBER SHOP

First Door South of

HOOK'S DRUG STORE

Designers and Manufacturers
of
Exclusive Commencement Stationery
Class Pins and Rings

Personal inquiries and correspond-
ence given prompt and
courteous attention.

JACCARD JEWELRY CO.

1017-1019 Walnut St. - K. C. Mo.

Don't Strain Your Eyes. See Dr. Riley NOW.

Welsh Bros. Motor & Tire Co.

Hood Tires

The Columbia Six

"Gem of the Highway"

The Nash Six The Nash Truck

"Perfected Valve-In-Head Motor"

Phone 344

-:-

-:-

343 E. 3rd St.

COURTESY IS RECIPROCAL

When a woman walks into a Dry Goods Store and "Flies into" the clerk, she is usually not greatly surprised if the clerk "Flies Back" at her, for human nature is built that way.

The young women who operate the Telephone switch boards are taught that they must be courteous to patrons if they wish to hold their places. Yet Telephone operators are human—just like other folks.

Things do not always go exactly right around the Telephone office just as in the shop, the office, the store or even the home. No Telephone apparatus has yet been made that works absolutely perfect, all the time and under all conditions, the manufacturers are discovering new features all of the time and perhaps some day they will get an instrument that will go out in the garden and bring the "called" party into the house.

Some delays, some inconveniences, and some scant service must be expected. Even trains are sometimes late; store deliveries sometimes go astray; men are slow in coming to dinner and once in awhile the housewife fails to have dinner on time.

And, somehow, when things go wrong around the Telephone office, (and other places too) "calling down" the operator never seems to remedy them.

When You Think of Graduation

Think of Sloan

Give Gifts That Last

S. J. SLOAN

103 E. 3rd St.

The Home of The New Edison—The Phonograph With a Heart and Soul.

Epidemic Prevention

Use Pine-O-Cide for disinfecting Desks, Tables, Counters, Floors, Woodwork and other surfaces in homes and public buildings.

Pine-O-Cide

is soluble in water. Has a delightful, fragrant odor. Is non-irritating. It is endorsed throughout the country by physicians and bacteriologists.

Manufactured Exclusively by

HILLYARD CHEMICAL CO.

Main 1560

St. Joseph, Mo.

To Our Trade Only

For Display in Business Houses We Furnish Pine-O-Cide Health Cards

THE STORE FOR

Holeproof Hosiery

Coopers Underwear

Idle Shirts and Collars

Marks Klaessy Caps

COLLEGE

AND

KUPPENHEIMER

CLOTHES

DILLENER CLOTHING Co.

Our "Baton Wielder" has such long hair
That it gives him a musical air.
The worst "note" which he knows
Are the ones which he owes
And they are exceedingly rare.



Be Sure Your

ATHLETIC EQUIPMENT

Comes From

Schmelzer's

Kansas City, Mo.

ASK YOUR DEALER

THOMAS FIDDICK

ICE

FEED

FUEL

AND

FARM SEEDS

Phone 77

Cameron

-:-

-:-

Missouri

Our coach is so very well known,
That we feel he's really our own.
'Tis plain to be seen
That he uses his "bean"
As our Football Team here
has shown.

BOOK SERVICE

If you will write us when you are in search of the best book on a special topic we will put our exceptional facilities at your disposal. If there is any doubt as to the book that should be recommended, your inquiry will be submitted to an expert in the line of the investigation you are pursuing and our answer based on the latest knowledge. This special service will be as prompt as possible, consistent with the result desired, and without cost other than usual charge for the book if furnished.

Write us for all books and supplies for the use of pastors, churches, Sunday Schools and Epworth Leagues.

Any good book will be furnished promptly by The House of Good Books.

The Methodist Book Concern

New York, 150 Fifth Ave.

Boston, 581 Boylston St.

Pittsburg, 105 Fifth Ave.

Detroit, 21 Adams Ave.

Chicago, 1018-24 Wabash Ave.

Kansas City, 1121 McGee St.

San Francisco, 5 & 7 City Hall Ave.

Cincinnati, E. 120 West 4th St.

Order from the nearest address

About Wyckoff I'll give you a
tip.
Don't get scared at his bristling
lip.
He isn't so bad
Except when he's mad.
When he's sore its time we
should skip.

Unusual Quality in
FOOTWEAR

Exclusive Shoes

FOR

College Men and Women

PACKARD & HOWARD
Shoe Co.

The College Shoe Store

PORTRAITURE OF QUALITY

—with the object of preserving
a faithful likeness in rich, artistic
permanent prints.

Kodak Finishing

The Kind that you like.

PROMPT SERVICE

Luce's Studio

Cameron

-:-

-:-

Missouri

Miss Hogrefe

To Miss Hogrefe's accurate ear
The misuse of a word is quite clear;
I believe that we'd find
If she were deaf, dumb, and blind,
She would feel that our English was queer.

Plain Price Mercantile Co.

General Merchandise For Cash

"HOME OF RIGHT GOODS

AT THE RIGHT PRICE

AT THE RIGHT TIME."

Phone 58

-:-

-:-

Cameron, Mo.

Molly, (in English class)—"When Bunyan and his wife were married they had only a spoon between them."

Herb,— "Hello, Finis, How's everything?"
Finis,— "Oh, she's alright."

"I may not be as big a fool as I look," said Holder to Vernita. (They were having a quarrel.) "No?" she replied sweetly. "Then you have a great deal to be thankful for."

Glen—"Did she return your love?"
Joe Pick—"Yes, she said she had no use for it."

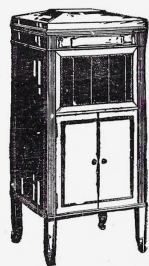
Can anybody explain why Miss Moore should hunt two days for a certain magazine, and then eagerly read an article on the subject, "Does marriage clip the 'Wings of Youth?' "

Lucile W. (to barber)—"I'd like a bottle of 'Lucky Strike' hair tonic."

B. W. FOSTER, D. C.
Chiropractor

Phone 131 -:- Day or Night

Cameron, Mo.



Columbia
Grafanolas
and
Records
found at

C.A. Leibbrandt's
Your Jeweler

The Physics Professor is true
blue
There's a number of things he
he can do.
If you think Physics bad
He can teach you to add
A most excellent speech maker,
too.

THE HOME OF

Blue Jay School Supplies

Conklin Self Filling Fountain Pens

Books

Wall Paper, Paints, Etc.

Victor Talking Machines

"Get It Where They've Got It."

CORNER DRUG STORE

S. H. HOOK & CO. -:- Props.

THE CHOCOLATE SHOP

THE HOME OF THE SWEETS

Students Headquarters

Candies, Soft Drinks, Fancy Sundaes

Box Candies a Specialty

Ice Cream Delivered

CEDRIC CORN, -:- Prop.

W. N. DARBY MOTOR CO.

Fords & Fordsons

Ford Service

Cameron -:- Missouri

THOMPSON
GROCER COMPANY

Good Things to Eat for All Occasions

Our Line Is Most Complete

WITHINGTON

Our Ag. Prof. will look into the
case,
Whether eggs or a crime he's
to trace.
With his queer little grin
And his indented chin
He would be very hard to re-
place.

Miss Moore—"Horace, give the principal parts of the verb sick."
Horace—"Ill, sick, dead."

ABSTRACTS OF TITLE
to
Any Lots in Cameron
or
Lands in Shoal Township

Your Business Appreciated

W. H. S. McGlumphy
Cameron -:- -:- Missouri

THE FARMERS BANK
Cameron, Mo.

Established 1878

Capital and Surplus
\$125,000

Safety Deposit Boxes
for Rent.

Interest Paid on Time Deposits
and Savings Accounts

N. S. Goodrich, President; W. G. Sloan, Vice-Pres.; H. B. Cooper, Cashier; T. W. Partin, Ass't. Cashier; D. G. Brillhart, Ass't. Cashier.

CITY MEAT MARKET

The Place for Quality

J. E. HAGAN, -:- Prop.

Mark Green—"After giving a violin solo in society) "Well, what do you think of my execution?"
Joe Pick—"I am heartily in favor of it."

In Academy English, Miss Moore Shows her classes just where they are poor.

If you can't answer her questions Let me make some suggestions. Don't study so hard and "miss more."

CAMERON HOTEL

Students Headquarters

Furnishes Employment

FOR
College Men.

Modern Accomodations
Good "Eats"

Reasonable Prices
Your Patronage Solicited

MISS HAVRESTICHE

If perchance to her class you should go
You will see for yourself that although
She speaks French with ease
Also Portugese
"Pig Latin" is one she don't know.

Only One Bread—It's Taylor's

Why Do Ninety
Per Cent of the People
of Cameron
Eat Taylor's Bread
Because It's the
BEST

**TAYLOR'S
BAKE SHOP**

Bread, Pies, and
Cakes
Baked Fresh Every Day

Only One Bread—It's Taylor's

HOTEL KUPPER
11th & McGee Sts.

WALTER S. MARS
Prop. and Mgr.

European Plan
\$1.00 to \$2.50 per Day

Automatic Sprinklers Making House
Thoroughly Fire-Proof

Particularly desirable for Ladies,
being in the center of the shopping
district. Convenient to all Theatres.
Direct car line to Stock Yards.

Kansas City, Mo.

I sat down and thot profound
This maxim wise I drew.
'Tis easier far to love a girl
Than make a girl love you.—Ex

O. K. GARAGE

Do You Know That We
Handle The
Light Overland Car?
Also Battery Service Station

C. C. DeSHON

COAL FEED
COAL OIL AND GASOLINE

Overland Automobiles

Opposite Burlington City Depot
Phone 675

MISS F. E. WILSON

Miss Wilson's ambition is plain
In her teaching she has just one
aim,
It's "exams" in her case
And when they're in the race
The "Gordian Knot" is quite
tame.

JEFFERSON HIGHWAY CAFE

Good Meals
Short Orders
QUICK SERVICE

Lives of editors remind us
That their lives are not sublime
And they have to work like
mischief
To get the Annual out on time.
—Ex.

If It's Candy It's at NEFF'S

SEE Ward & Burgess

Good Building
Material and Service

Cameron -:- -:- Missouri

Prof. Withington, (in Biology)—
"Now class, name some of the lower
animals beginning with Clay Davis.

McCampbell, I've heard people
say
Can any musical instrument
play.
This report can't be right
For in practice at night
He would drive all his neigh-
bors away.

The PALACE BARBER SHOP

"The Place Where All Good Fellows
Meet"

CLAUDE WINGATE, Prop.

Cameron -:- -:- Missouri

THE CENTURY CAFE

THE HOME
Of All That is Good to Eat.

Cameron -:- -:- Missouri

THERE'S A CHARM ALMOST IRRESISTABLE

in the

NEW SEASONABLE MERCHANDISE

always to be found at

The Cameron Style Shop

CAMERON MOTOR CO.

Tires, Tubes, Accessories
AND ALL KINDS OF
Repairing on Cars

Service Guaranteed

THE HOME OF THE BUICK

WILLARD SERVICE STATION

We Repair and Recharge any Make
of Battery

A New Battery for Any Make of Car

HAAR BATTERY SERVICE

Phone 230 -:- 213 E. 3rd St.

MISS DEXTER

Our Education teacher, the
small.
Spends much of her time in
policing the hall
This habit has grown
'Till she's very well known
And her tread is familiar to all.

MISS HENDERSON

If you feel like you want to
"orate,"
And most insanely gesticulate.
If you feel so inclined
I think you will find
That Miss Henderson's treat-
ments are great.

When You Are In College
Make This Your
Headquarters

for

DRY GOODS, CLOAKS, SUITS
Waists, Corsets, Hosiery

AND

Wearing Apparel of All Kinds

W. E. HIBBS

Cameron -:- -:- Missouri

J. W. POLAND

Furniture Store

Let Us Frame Your Pictures

CITIZENS STATE BANK

Cameron, Mo.

"The Square Deal Bank"

MISS HERRING

Miss Herring, quite robust in
form,
Will be found some place where
it's warm.
Her job is to keep
The wolves from the sheep.
She keeps watch on the "lambs"
at the "Dorm."

MISS GIBSON

If we take it to Webster we'll
find
That Psychology means study
of mind,
Miss Gibson's the teacher,
She's so quiet a creature
That we wish there were more
of her kind.

N. E. OWEN

The Rexall Store

Drugs, Books, Stationery, Wall
Paper, Shades, Paint
and Glass.

SODA FOUNTAIN
In Season

Cameron :- :- Missouri

MISS SHEPHERD

If Miss Shepherd should for a
man wish
She would not wait to catch
some poor fish.
But without any delay
That very same day,
She would paint herself one on
a dish.

For Shoe News and New Shoes
REMEMBER

RALEIGH S. BROWN
The Shoeman

We Always Appreciate a Look

Cameron :- :- Missouri

MISS WACHTEL

In Commercial, Miss Wachtel
is grand,
She can typewrite to beat any
"band."

In less than a week
She can teach you to speak
The difficult language of "short
hand."

Wilson Thomas—"I want some-
thing to hang my pants on."
Clerk—"O, yes. A pair of sus-
penders sir."

FOR

Satisfaction and Service

PATRONIZE

CAMERON
CLEANING AND TAILOR
SHOP

R. J. CRENSHAW, Prop.

Tailor Make Suits to Your Order

Suits Cleaned
and
Pressed

Cameron :- :- Missouri

PROF. LAYTON

Excell in what ever you do
Is an excellent rule, it is true.
Prof. Layton we find
Is a man of that kind.
In music he's equalled by few.

PIANOS

Steinway
Weber
Vose
Kurtzman
Estey
Harwood
Elburn
And Many Others

OUR PRICES
The Lowest In United States

CALL OR WRITE

Genuine Pianolas
Incomparable
Duo-Arts
Genuine Victrolas
String Instruments
and
Band Instruments
Of All Kinds

J. W. Jenkins Sons
Music Co.

1015 Walnut St.

Kansas City, Mo.

MIDLAND HOTEL

FOR

Expert Service

AND
Reasonable Prices

Cameron :- :- Missouri

The nickle show no
longer stands
Beloved by youth throughout
the nation.
There's too much light
for holding hands—
Darn indirect Illumination!—Ex.

BANG!!

THAT GETS YOUR ATTENTION
 ER ?
 WE'RE JUST EXPLODING WITH
 ENERGY—PEP—AND DESIRE
 TO SERVE YOU AND
SERVE YOU WELL.

WE —
 ORIGINATE
 PLAN
 DESIGN
 WRITE
 AND
 PRINT

ANYTHING—COMPLETELY

OUR LINE ALSO EMBRACES
 LITHOGRAPHING—OFFICE FURNITURE
 PRINTING—OFFICE SUPPLIES
 STATIONERY—BANK FEATURES
 BUILDING PAPERS—VAULT EQUIPMENT

SCHOOLEY STATIONERY & PRINTING COMPANY.
 36-38 DELAWARE STREET
 KANSAS CITY, MISSOURI
 PHONES MAIN 510.

PROF. WOOD

Prof. Wood I have often heard
 said
 Is "Wood" from his heels to
 his head.
 Tho hard he has tried
 To be dignified
 He is quite the contrary in-
 stead.

W. H. KIMES

Furniture, Hardware ...
 Rugs & Linoleums

Phone 87 -:- Cameron, Mo.

"What is mind?"
 "No matter."
 "What is matter?"
 "Never mind."

J. B. RUSSELL

Building Material

HIGH QUALITY
 Prompt Service

Cameron -:- -:- Missouri

CAMERON DAIRY CO.

Manufacturers of
"CREAM OF QUALITY"

Ice Cream

Phone 405 -:- Cameron, Mo.

Prof. Corn—(In Bible class)—
 "Miss Corken, to what tribe did
 Herod belong?"
 Anna Helen—"He had a half in-
 terest in the Jews."

"How is Fred getting along at college," asked the Minister, who was
 being entertained at dinner.

"Splendidly," said the proud father, who then went on to tell of his
 sons various social, athletic and scholastic successes, and the minister
 said, "It was a fine thing to be college bred."

That evening Lucie James, who had been an interested listener said,
 "Papa, what did Mr. Brown mean by 'College Bred?'"
 "He said his father, looking over his son's bills, 'Is a four
 year's loaf.'"

Miss Harper

Miss Harper can teach you with E's
 To tickle the Ivory keys;
 She knows music so well
 She can readily tell
 Any note on the staff which she C's.

Miss Alleen Wilson

If you have a matromonial turn
 From Miss Wilson there are some things to learn;
 Almost any day
 She will teach you the way
 To "fry" water and not let it burn.

ED BYERS
Dry Cleaning and Tailoring
Old Postoffice Building
Cameron -:- -:- Missouri

DR. LIZZIE CLAY
Osteopath
102 South Cherry
City phone 665 -:- Cameron, Mo.

A. C. WELSH
Groceries
Cameron -:- -:- Missouri

MARY MUNSON
Up-To-Date Millinery
W. 3rd Street.
Cameron -:- -:- Missouri

SANITARY BARBER SHOP
East 3rd Street
M. C. Dyche, Prop.

DR. J. C. BOWMAN, M. D.
Bungalow Office
Cameron -:- -:- Missouri

JOHN W. GILLILAND
Optometrist
For Glasses
Over First National Bank
Cameron -:- -:- Missouri

O. J. MUNSSELL
Heating and Plumbing
East 3rd Street
Cameron -:- -:- Missouri

I. J. GARVIN & SONS
Groceries
Cameron -:- -:- Missouri

W. W. FIELDS
Barber Shop
Hair Cuts, 25 cents.
Cameron -:- -:- Missouri

P. E. KENNEY
Poultry and Produce
Walnut St. -:- Cameron, Mo.

THE DAILY NEWS
Cameron, Mo.
By mail 25c a month.
By Carrier, 10c a week.
Special Attention to Job Printing

C. E. JEFFERS REALTY CO.
Loan and Insurance.
Farms, City Property
Cameron -:- -:- Missouri

MAX R. WILEY
Attorney at Law
First National Bank Bldg.

THE CRITERION
THE CHRONICLES
OF
WESLEYAN EVENTS

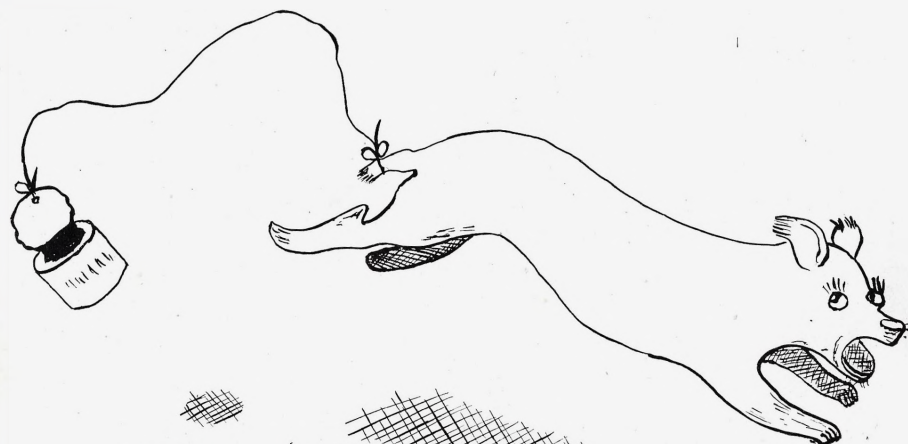
O. A. SMITH
Dentist
Special Discount to Students
Cameron -:- -:- Missouri



A College Annual,
designed, planned and
engraved by Burger Engraving
Company, always results
in a successful publication. College
Annual Staffs have discovered that
our close co-operation, combined with
original and snappy ideas, the highest
quality of engraving and service result in a
financial statement that shows a profit to the
Staff. May we talk over our proposition with you

Burger
Engraving Co.
Eighth and Wyandotte, Kansas City
Write us for suggestions and
samples

We, the Juniors, bid you farewell. We realize we have made mistakes but as this is our one and only book we cannot promise to do better in the future. However we have done our best and we hope we have given you a book which will help to recall the pleasant happenings and associations of your college days and if we have succeeded in making your college a little nearer and a little dearer to you, we are content. If our annual is a success, we want to thank the faculty and students who, by their support have helped to make it so.



THE
END

