

The  
OWL

1925

*The*  
**1925 OWL**



*Missouri Wesleyan*  
*Year Book*



*Published by the*  
**JUNIOR CLASS**



## Foreword

With the hope that in the years to come the 1925 Owl may be your companion invoking pleasant memories of happy hours at Wesleyan, calling up familiar faces and reminding you that it is worth while to think big thoughts, the Junior Class of 1925 presents this book to all who love Wesleyan.



## Staff

<i>Editor-in-Chief</i> . . . . .	Evert E. Byers
<i>Associate Editors</i> . . . . .	{ Corrine Garner Goldie Diven
<i>Business Manager</i> . . . . .	Ralph E. Whipple
<i>Assistant Business Manager</i> . . . . .	Francis Rose
<i>Advertising Manager</i> . . . . .	Leon Fleener
<i>Assistant Advertising Manager</i> . . . . .	Louis Connell
<i>Secretary</i> . . . . .	Virgil Lindsey
<i>Art Editors</i> . . . . .	{ Betty Slayton Myrtle Lair Mildred Robison
<i>Literary Editors</i> . . . . .	{ Florence Frakes Allen Searcy Jay Tomlin
<i>Calendar</i> . . . . .	Nila Ganfield
<i>Joke Editors</i> . . . . .	{ Sidney S. Brown Billie Gilchrist
<hr/>	
<i>Editor-in-Chief Elect</i> . . . . .	Harold J. Cokely
<i>Business Manager Elect</i> . . . . .	Martin Grantham





## *Dedication*

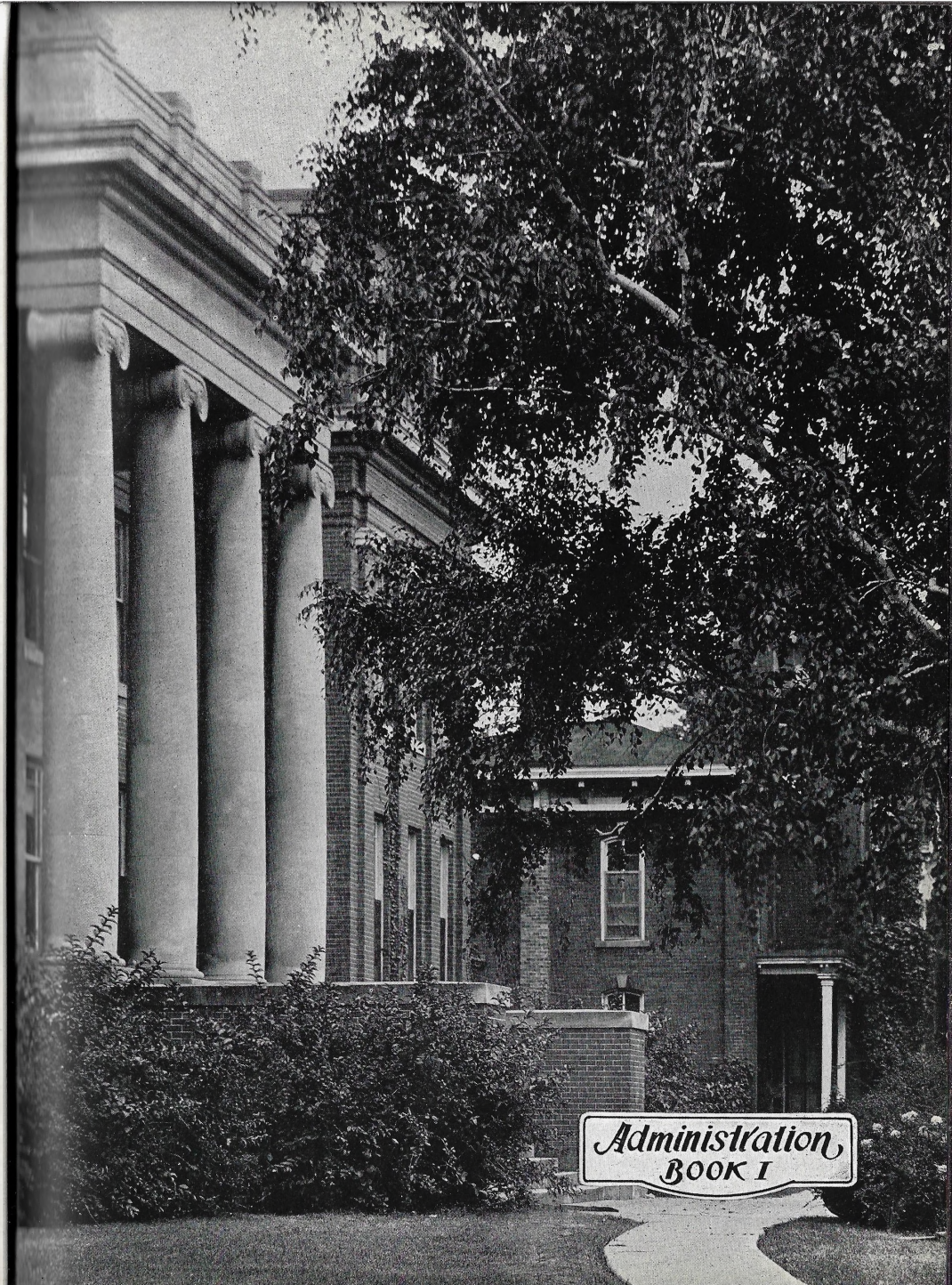
As a mark of esteem in heartfelt appreciation of your many years of faithful service, it is to you, Dean Kelsey, that we dedicate this annual. Your quiet Christian manliness imbues all those around you with a love for the good, the beautiful, and the true. To those of us more intimately associated with you, your life is a vital beacon of courage and kindness; to all of us, you stand a noble gentleman.





## Contents

BOOK I	Administration
BOOK II	Classes
BOOK III	Athletics
BOOK IV	Activities





PRESIDENT E. F. BUCK

Ernest Ferguson Buck has been President of Missouri Wesleyan College for two years and a half. Under his administration the college campaign for \$750,000 was carried through last summer. President Buck has the interests of the College at heart and is looking forward to and planning for the time when Missouri Wesleyan College will have a student body of five hundred and buildings and equipment of which we may be justly proud.



MR. JOSEPH H. DUSENBERRY  
Business Manager of Missouri Wesleyan College

Although this is Mr. Dusenberry's first year at our college, a host of friends now surround him. He takes an active interest in all college activities and we are glad to welcome him among us.

DR. W. F. BURRIS  
President of the Executive Board

Dr. Burris became a member of our Board of Trustees in the spring of 1899 and was chosen as a member of the Executive Committee in 1908. Missouri Wesleyan is always first in his endeavors, and the student body appreciate his interest.

DR. CHARLES ENGLISH  
Vice-President

He is another Kansas product. He was reared, educated and began his ministry in that state. He transferred to Iowa, where he spent eighteen years in the Des Moines Conference and transferred from there to Missouri. He has served eleven years on the Executive Committee. He likes Missouri and is an enthusiast for the college.

DR. BEN F. JONES  
Secretary

Dr. Jones has many personal friends in Missouri Wesleyan College and he is always welcome in our midst. He has been a member of the Board of Trustees since 1913, and a member of the Executive Board for several years. He is now serving his eleventh consecutive year as Secretary of the Board.

MR. A. J. ALTHOUSE

Mr. Althouse has been a member of the Executive Board for four years. He is one of Cameron's prominent bankers. Missouri Wesleyan is proud to claim him as one of her most trusted friends.

1925 OWL

C. P. DORSEY

Treasurer

Mr. Dorsey is well known to all the students and has always proved himself a faithful friend.

DR. E. B. THOMPSON

A former student of Missouri Wesleyan College, receiving his A. B. degree in 1903. He frequently visits our chapel and tells us things of interest.

HON. FRANK KLEPPER

A resident of Cameron, who received his elementary degree in Missouri, but received his B.L. from the Baker University of Law. He denotes his best interests to the advancement of the community.

1925

1925 OWL

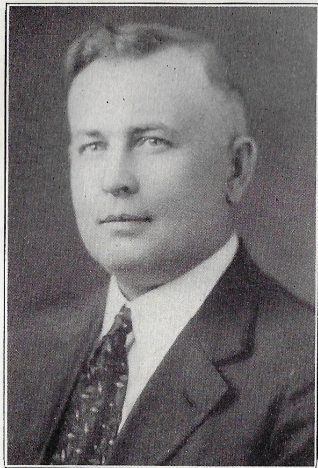
This page is dedicated to Miss Lenore DuBois and Dr. and Mrs. Reed, who have been such potent factors in making our college life worth while.

Miss DuBois has won many friends as instructor in piano, especially among her students, during her two years' stay at Missouri Wesleyan College.

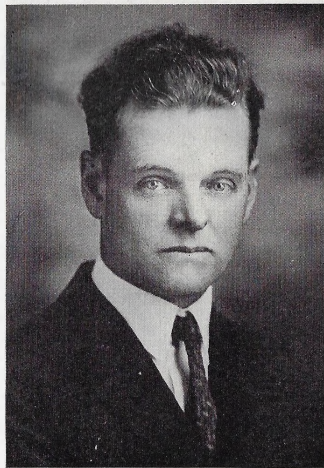
We are proud to state that no college can boast of a more efficient pair of instructors than Dr. Reed in Philosophy and Psychology and Mrs. Reed in the English department. Under their tutelage the departments grew in size and popularity, enriching our mental and cultural life and ever inculcating those worthy ideals which are the basis of lives of worth and usefulness. They won the heart of every student who had worked with them during their five-year stay at Missouri Wesleyan College.

Missouri Wesleyan regrets the loss of these faculty members, yet they will never be lost in the memories of those who have associated with them. We join together in wishing them success and in pledging them our everlasting friendship.

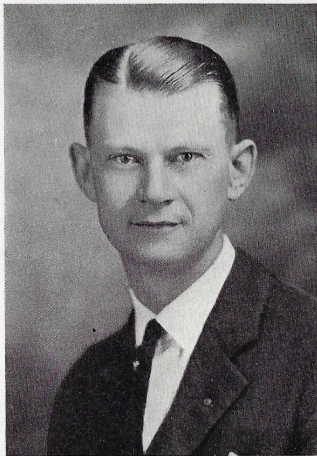




D. L. DALKE, A.B., A.M.  
Dean and Professor of Education  
*"If all the world were his, he would be no other than he is—Our own Dear Dean."*



H. C. KELSEY, Mus. B.  
Dean of Conservatory of Music  
*"Does big things for Wesleyan in a modest way."*



TRUE TAYLOR, A.B., A.M.  
Registrar Professor of Social Sciences  
*"His object is to help every individual to 'lead a normal life'."*



W. F. NULL, A.B., A.M.  
Professor of Mathematics and Physics  
*"A truly Christian gentleman, and the students' ever ready, loyal friend."*



LEONE CHAPPELL REED, A.B.  
Professor of English  
*"She has a wonderfully wide acquaintance with the best things of the Literature of all ages, tempered by a common knowledge of the hearts and hopes of her students."*



CARIE F. SHEPHERD  
Librarian, Art Director  
*"Has the 'Art' of doing things Well."*



J. FRANK REED, A.B., A.M., B.D., S.T.M., Th.D.  
Professor of Philosophy and Psychology  
*"Modest and unassuming. The beautiful influence of his work in showing us the good and noble ways of true Christian living will remain forever in the hearts of the Wesleyan students."*



H. A. WYCHOFF, A.B.  
Professor of Chemistry and Bacteriology  
*"Two real assets, a pleasing personality and a scientific culture."*



GERTRUDE K. LIPPELT, B.S., A.M.  
Professor of Modern Languages  
*"A lover of Romantic Languages. When you know her you can't but think well of her."*



C. H. LAW, A.B., S.T.B., J.A.M.  
*Professor of Bible and Religious Education*  
*"Enthusiastic and loyal—He is full of his work."*



EDNA GARNER, A.B.  
*Instructor in French*  
*"A present example of a successful Wesleyan graduate."*



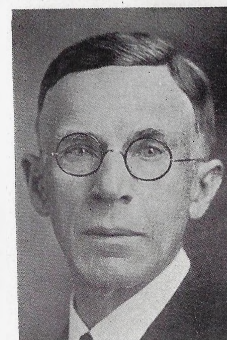
LENORE DU BOIS, Mus.B.  
*Instructor in Piano and Theory*  
*"We hope she's as successful in her new calling as she has been in her present position."*



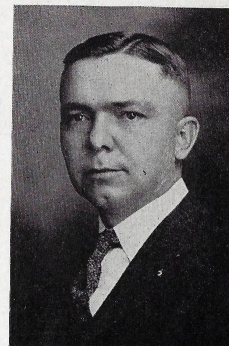
SUSAN MILLIER, A.B., B.S.  
*Instructor in Home Economics*  
*"It's nice to be natural when you're naturally nice."*



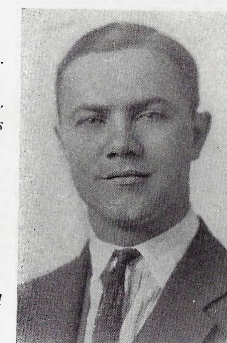
B. W. FOLSOM, A.B.  
*Professor of Public Speech and Instructor in English*  
*"Earnestly works to give forensics it's proper place at Wesleyan."*



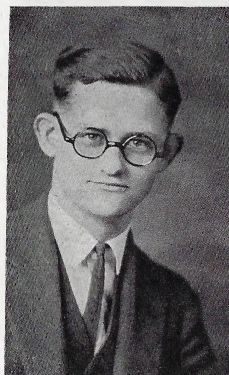
WILLIAM T. CLINE, Ph.B., A.M., Ph.D.  
*Professor of History and Political Science*  
*"Our Beloved Doctor."*



C. H. WITHINGTON, B.S., M.S., A.M.  
*Professor of Biology and Agriculture*  
*"Zealous guardian of our campus, our poultry reputation, our picture shows and our grass."*



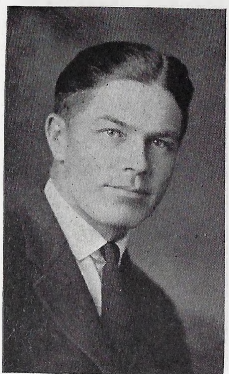
L. G. SLAYTON, A.B.  
*Principal of Academy. Instructor in Biology. Assistant Coach*  
*"An untiring worker and a jolly good fellow."*



R. C. KINNE, A.B.  
*Instructor in Chemistry*  
*"We think he is human, but it's hard to convince Freshmen Chemistry Students."*



ESMA SOMERVILLE SLAYTON  
*Instructor in Public School Music*  
*"Happiness consists in activity—and Lester."*



W. N. COLLINS, B.S.  
*Athletic Director*  
*"He expects every athlete always to be a Man. With him, clean sportsmanship comes first."*



GLADYS E. M. WHITT  
*Instructor in Piano and Ensemble*  
*"Pleasant and sincere in her teaching and friendships."*

The OWB



JESSIE C. TRACY  
*Instructor in Violin*  
"True to her duties and her students."



VERA HERRING  
*Dean of Women*  
"Has to be the crank when the boys forget their self starters. A loyal worker and the truest kind of a friend."



W. E. TRACY  
*Instructor in Band and Orchestra*  
"The harmony of the various parts of his orchestra is a proof of his superiority as a leader and instructor."



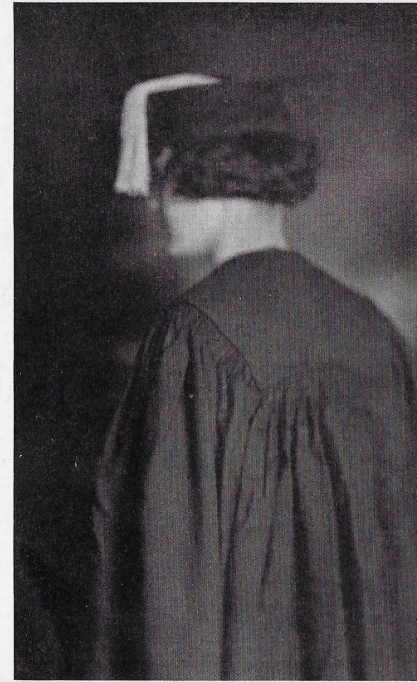
GRACE HENDERSON, Graduate  
Averill School  
*Instructor in Expression*  
"Puts her best into all she does. Leads her pupils to make others happy by the medium of their voices."

MAUDE GIBSON, A.B., B.S.  
*Instructor in Teachers' Training*  
"Always friendly, just the same.  
Always square in life's old game."

1925



Classes  
BOOK II



*Seniors*

The OWLS



o MARY BRIDGES <sup>Thailman</sup> . . . Cameron, Mo.  
Major English  
Ruthean; Scrub Faculty.  
"How lonely Wesleyan will be without any of the Bridges."



+RALPH HICKS . . . Braymer, Mo.  
Major Bible  
Excelsior; Ministerial Association; Yell Leader; Class President; Pep Club.  
"We know there'll never be another like him, and how we hate to loose him."



D WALLACE THEILMANN . . . Cameron, Mo.  
Major Education  
Football, '24; "W" Association; Adelpian; Criterion Staff; Y. M. C. A.  
"One who has such an interest in Bridges should be an engineer."



D JOHN A. CLARK . . . Cameron, Mo.  
Major English  
Football, '21, '22, '23, '24; Track, '22, '23, '24, '25; Track Captain; Basketball, '25; Editor of The Criterion; Scrub Faculty; Class President.  
"The man we will miss next Thanksgiving."



+ HESTHER HOOTMAN <sup>Kueghler</sup> . . . Cameron, Mo.  
Major Education  
Ruthean; Scrub Faculty.  
"What are halls for if not to linger in?"

D + RED MCKEE . . . Ravenwood, Mo.  
Major Science  
Excelsior; Scrub Faculty; Y. M. C. A.; "W" Association.  
"Fred scores a goal (Gould)."

D EMMET WYRICK . . . Macon, Mo.  
Major Languages  
Adelpian; Y. M. C. A.; Scrub Faculty; Football, '24; "W" Association.  
"As a Fireman he gave us a holiday."

? REX HARBOARD . . . Osborn, Mo.  
Major English  
Adelpian.  
"One student on the front row in Chapel that was a regular attendant."

? HARRIET HARBOARD FERGUSON . . . Osborn, Mo.  
Major Home Economics  
Ruthean.  
"The bride is winsome and bonnie."

o WALTER SWIFT . . . Grant City, Mo.  
Major Chemistry  
Adelpian; Men's Glee Club; Scrub Faculty; Pep Club; Alchemists; Theta Chi Delta.  
"A Chemical Current."



o MRS. LEATA MASSIE . Kidder, Mo.  
Major Philosophy  
Ruthean; Scrub Faculty.  
"She loves her Greek, especially her Homer."



D ROBERT JONES . . . Mercer, Mo.  
Major Mathematics  
Adelpian; Scrub Faculty; Pep Club.  
"Big hearted Pinky."



o MARY HARTIGAN . . . Cameron, Mo.  
Major Education  
Ruthean; Scrub Faculty.  
"Am I speaking to you or your sister?"



+ LOU GENE EVANS <sup>Wade</sup> . . . Cameron, Mo.  
Major Public School Music  
Ladies' Glee Club and Quartette; Ruthean; Dramatic Club.  
"Back to nature for her (Woods)."



DANNA BUCK . . . . . Cameron, Mo.  
Major History  
Aesthesian; Y. W. C. A.; Scrub Faculty.  
"There is no time like the present."



D o LUTHER SWIFT . . . Grant City, Mo.  
Major Music and English  
Excelsior; Pep Club; Scrub Faculty; Alchemists.  
"I wandered lonely as a cloud."



+ LAURA HENERY . . . Osborn, Mo.  
Major Education  
Y. W. C. A.; Scrub Faculty; Ruthean.  
"Her voice is ever soft, gentle, and low."



D MARGRET HARTIGAN . . . . . Cameron, Mo.  
Major Education  
Ruthean; Scrub Faculty.  
"She spends most of her time looking for Mary."



+ GRACE BAKER <sup>Wink</sup> . . . Blythedale, Mo.  
Major Home Economics  
Aesthesian; Y. W. C. A.; Scrub Faculty.  
"How lovely to know her."



D R. L. HENRY . . . . . Cameron, Mo.  
Major Philosophy  
Excelsior; Ministerial Association; President Y. M. C. A.  
"One of our philosopher preachers."



The OWLS



+ PAULINE WILEY <sup>Neal '25</sup> Cameron, Mo.  
Major Home Economics  
Ruthean.  
"Dignified teacher, did you say?"

+ FRANK SLAYTON . . . Lathrop, Mo.  
Major Agriculture  
Adelphian; Athletic Manager; Dramatic Club; Track, '22, '23, '24, '25; Football, '22, '23, '24; Basketball, '24, '25; Scrub Faculty; "W" Association.  
"Hates to grow old, likes the Cameron High Misses."



ROBERT KAY '25 . . . Osborn, Mo.  
Major Education  
Adelphian; Scrub Faculty.  
"How's 43?"

+ CAROL MEYER <sup>Leiker '25</sup> Oregon, Mo.  
Major Biological Science  
Ruthean; Scrub Faculty.  
"She graduates this year and then—"



DISABELLE PRUGH . Grant City, Mo.  
Major Mathematics  
Ruthean.  
"As a teacher she is Turney's Pride."

DOMER MASSIE . . . Kidder, Mo.  
Major Bible  
Adelphian; Ministerial Association.  
"His duties are many, but it isn't far to Kidder."



DEUGENE WOOD . . . Cameron, Mo.  
Major Education  
Excelsior; Scrub Faculty; Dramatic Club; Ministerial Association.  
"He would if he could and he could if he would (Wood)."

+ EILLEEN KAY <sup>HopD '25</sup> Osborn, Mo.  
Major Education  
Ruthean.  
"An ever pleasant librarian."



OEVA CRAWFORD . . . Cameron, Mo.  
Major Music  
Ladies' Glee Club; Ruthean.  
"Always seen with her music sheets."

+ SAMUEL BAUER '25. Cameron, Mo.  
Major Chemistry  
Excelsior; Alchemist; Theta Chi Delta.  
"A hound for women."



+ MILDRED BENDER <sup>McWorsey</sup> Winston, Mo.  
Major English  
Ruthean; French Club; Y. W. C. A.  
"Star French Student."



THELMA GROSS . . . Cameron, Mo.  
Major Mathematics  
Scrub Faculty; Ruthean; Criterion Staff; Basketball, '24, '25; "W" Association.  
"She likes Wesleyan but sometimes she thinks of M. U."



ELMER BAYSE . . . Osborn, Mo.  
Major Education  
Adelphian; Y. M. C. A.; Scrub Faculty.  
"When he speaks he has something to say."



RUSSELL WELSH . . . Laclede, Mo.  
Major History  
Adelphian; Pep Club; Scrub Faculty.  
"Seniorita Lippelt, be yourself."



MARION HULSIZER . Cameron, Mo.  
Major English  
Ruthean; Basketball, '24, '25; Ladies' Glee Club and Quartette; Y. W. C. A.; Criterion Staff; French Club; "W" Association.  
"She misses someone who was here last year."



MILDRED ENGLAND <sup>Osborn</sup> Osborn, Mo.  
Major English  
Ruthean; Scrub Faculty; Criterion Staff; Basketball, '24, '25; Y. W. C. A.; Student Council.  
"A typical college student."



CHARLES MORELOCK Cameron, Mo.  
Major History  
Adelphian; "W" Association; Football, '22, '23, '24; Scrub Faculty.  
"He has just discovered what an interesting town Winston is."



HOLA McCULLOCH <sup>Wyaconda</sup> Wyaconda, Mo.  
Major English  
Aesthesian; Y. W. C. A.; Criterion Staff.  
"It won't be Wesleyan without you."



ADA McCULLOUGH . Cameron, Mo.  
Major English  
Ruthean; French Club; Scrub Faculty.  
"An honor student in Campustry."



DLOIS McCULLOCH . Wyaconda, Mo.  
Major Science  
Aesthesian; Y. W. C. A.  
"Such a pair can fool the instructors"





◊ THOMAS JONES . . . Cameron, Mo.  
*Major Chemistry*  
Adelphian; Alchemist Club; Pep Club;  
Scrub Faculty; Theta Chi Delta.  
*"A scientist and a philosopher ought to  
make his mark in the world."*



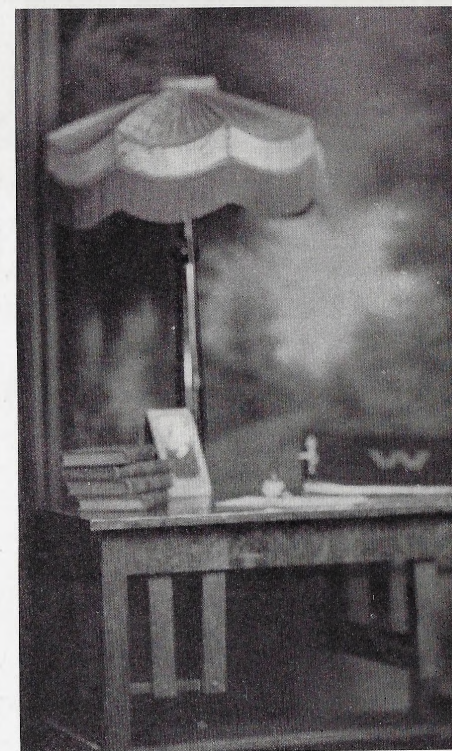
◊ AUSTIN SIMONS . . . Rockport, Mo.  
*Major Agriculture*  
Excelsior; Y. M. C. A.; Scrub Faculty.  
*"Prof. Withington's right hand man."*



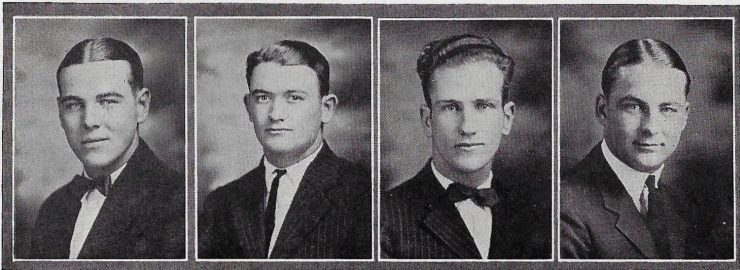
◊ WINIFRED SHAW <sup>Pape</sup> . . . Kidder, Mo.  
*Major Education*  
Ruthean.  
*"She seems to enjoy life."*



◊ CHARLES SCHAFFNER . . .  
. . . . . Lathrop, Mo.  
*Major Agriculture*  
Adelphian President; Men's Glee Club;  
Men's Quartette; Football, '21, '22,  
'23, '24; "W" Association; Student  
Council.  
*"If you want a real friend—here he is."*



# Juniors



✓ EVERT E. BYERS<sup>'28</sup>. Cameron, Mo.  
Criterian Staff; Editor of the Owl;  
Class President; Pep Club; Adel-  
phian.  
*"He has made friends with the Seniorita.  
No es verdad?"*

DRALPH WHIPPLE . Fortescue, Mo.  
Criterion Staff; Men's Glee Club;  
Wrestling Team; Football, '22; '23;  
'24; Captain-Elect, Football; Basket-  
ball, '23, '24; Excelsior; Y. M. C. A.;  
Owl Staff; "W" Association.  
*"Always smiling and always popular."*

WALTER PIBURN . Smithville, Mo.  
Excelsior; Football, '22, '23, '24; "W"  
Association.  
*"Skeet, the man with the educated head  
and toe."*

✓ EVERETT CLEMENS . Cameron, Mo.  
Football, '23, '24; "W" Association;  
Dramatic Club; Adelphian.  
*"Could there be a 'Blue Lantern' without  
him?"*

MILDRED ROBISON . Cameron, Mo.  
Ruthean; Ladies' Glee Club President;  
Ladies' Quartette; Owl Queen;  
Dramatic Club; Owl Staff.  
*"Her studies are great, but her activities  
are greater. 'Such popularity must be  
deserved'."*

DBILLIE GILCHRIST . Keystone, Mo.  
Adelphian; Football, '22, '23, '24;  
Criterion Staff; Owl Staff; "W"  
Association.  
*"Oh sleep! it is a gentle thing—especially  
in class."*

✓ ANNA McVICKER<sup>Hart</sup> . . . Cameron, Mo.  
Ruthean; Y. W. C. A.  
*"She is faithful and conscientious in her  
work."*

✓ MORRIS MOON . . . Cameron, Mo.  
Adelphian; Pep Club.  
*"Senator, the Historian."*



✓ VIRGINIA KEMPER . Cameron, Mo.  
Ruthean.  
*"If she believes a thing, she says it."*

FRANCIS ROSE . . . Cameron, Mo.  
Excelsior; Owl Staff.  
*"We are sorry that you had to leave us."*

GOLDIE DIVEN<sup>Whipple</sup> . Cameron, Mo.  
Criterion Staff; Owl Staff; Aesthe-  
sian; Dramatic Club; Y. W. C. A.;  
French Club.  
*"The other half."*

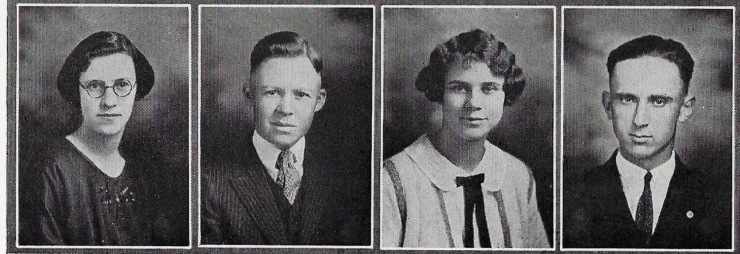
RALPH McFARLING . Rockport, Mo.  
Excelsior; Y. M. C. A.; Criterion  
Staff.  
*"Likes to drive Hick's 'baby carriage'."*

CORRINE GARNER . Cameron, Mo.  
Aesthesian President; Y. W. C. A.;  
Owl Staff.  
*"Who can estimate her worth."*

LEON FLEENER . . . Cameron, Mo.  
Adelphian; Owl Staff; Pep Club.  
*"A hustling ad writer for the Owl of  
'25."*

BETTY SLAYTON<sup>(Walker) Page</sup> . Lathrop, Mo.  
Ladies' Glee Club; Y. W. C. A.;  
Dramatic Club; Aesthesian; Owl  
Staff.  
*"The dear little girl with the turned-up  
nose."*

LEVY ROBINSON . Green City, Mo.  
"W" Association; Men's Glee Club;  
Y. M. C. A.; Excelsior.  
*"Hence, Vain deluding joys."*







MILDRED DOWNING . Cameron, Mo.  
Alchemist Club; French Club.  
*"One of Wesleyan's Queens."*

D JAMES SHULTZ . . . Lucerne, Mo.  
Excelsior; Y. M. C. A.; Football, '22,  
'23, '24; Track, '23, '24, '25.  
*"It's a great world and I'm glad I am  
in it. Yc-us."*

FLORENCE FRAKES . Laclede, Mo.  
Aesthesian; Y. W. C. A.; Owl Staff.  
*"For information as to her behavior, see  
Miss Lippelt."*

DELZA REDMAN . . . Maysville, Mo.  
Debate; Pi Kappa Delta; Excelsior;  
Y. M. C. A.  
*"He doesn't say what Grace expects him  
to in debate."*

D ERVIN SWEEM . . . Cameron, Mo.  
Adelphian; Football, '22, '23, '24.  
*"A great English student and a phenom-  
enal athlete."*

MYRTLE LAIR . . . Bethel, Mo.  
Y. W. C. A.; Owl Staff; Aesthesian  
President; Alchemist Club.  
*"Friendly and lovable."*

D ALLEN SEARCY . Independence, Mo.  
Y. M. C. A.; Owl Staff.  
*"He knows what he thinks and he says  
it."*

DMARENE ELLIOTT . Cameron, Mo.  
Ruthean.  
*"She may enter the business world; she  
thinks something of becoming a  
'Baker'."*



NILA GANFIELD . . Jamesport, Mo.  
Ruthean; Ladies' Glee Club; Y. W. C.  
A.; Alchemist Club; Owl Staff.  
*"Her thoughts are big, almost six feet  
high."*

WALDRON JONES . . . Macon, Mo.  
Excelsior; Pep Club.  
*"We have his word for it that he is half  
of a 'winning combination'."*

MAUDE BAUER . Stewartville, Mo.  
Aesthesian; Dramatic Club.  
*"The girl we can depend on."*

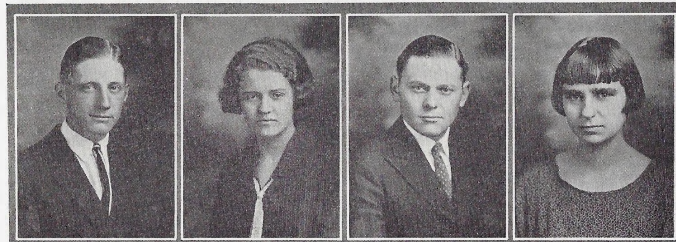
WILBUR MOORE . . Cameron, Mo.  
Debate; Pi Kappa Delta; President of  
Pep Club; Criterion Staff.  
*"We look to see him Speaker of the  
House some day."*

D VIRGIL LINDSEY . . Chillicothe, Mo.  
Excelsior; Y. M. C. A.; Owl Staff.  
*"Tis the eve of May (Eva Mae) that  
infatuates me."*

BERNICE HOPPER . Forest City, Mo.  
Aesthesian; Dramatic Club; Y. W. C.  
A.  
*"Sunny is her hair, but more sunny is  
her disposition."*

D JOSEPH WILLIAMS . Cameron, Mo.  
Adelphian; Y. M. C. A.; Men's Glee  
Club; Men's Quartette.  
*"How lonely he will be next year."*

D THELMA SCHONK . . Cameron, Mo.  
Ruthean; Y. W. C. A.; Assistant  
Librarian.  
*"Light is her step and bright is her  
smile."*





PEARL MORTON . . . Cameron, Mo.  
Aesthesian; Y. W. C. A.  
*"A bright spot in a dull world."*

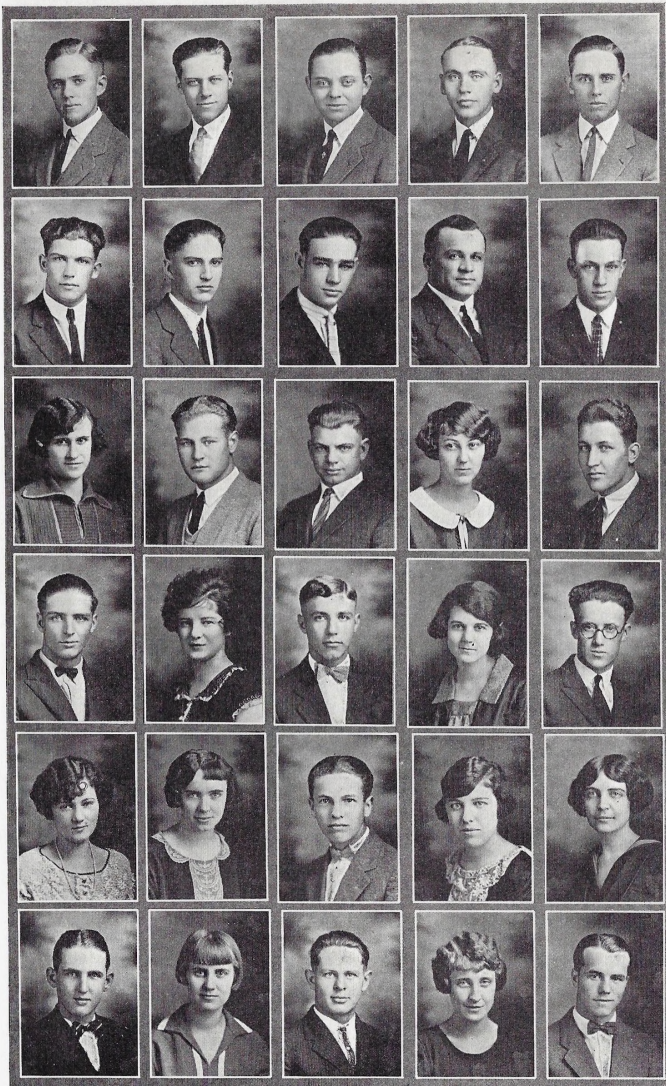
RUTH DEEM . . . . Brookfield, Mo.  
Y. W. C. A.  
*"A pleasant smile for all, and more than  
a smile for some."*

FORREST R. BROWN . Cameron, Mo.  
Excelsior; Ministerial Association.  
*"A 'Tiger' that fights the 'Jayhawk'!"*

CLEO BROWN . . . . Cameron, Mo.  
Adelphian.  
*"Handy with the 'chickens'!"*



SOPHOMORES



- JOSEPH GREENWOOD . . . Chillicothe, Mo. Adelpian; Y. M. C. A.; Pep Club; Men's Glee Club. "Music is the inspiration of his greatness"
- BAZZELL FOXWORTHY . . . Winston, Mo. Glee Club; Y. M. C. A.; Adelpian. "Who could resist my grin and my dimples?"
- D + FLOYD POLLOCK . Powersville, Mo. Men's Glee Club; Y. M. C. A.; Excelsior. "Never too busy to grant a favor."
- OMAR BUZZARD . . . Cameron, Mo. Adelpian. "May be a biologist some day."
- O ROY SCHNEITER . . . Cameron, Mo. Adelpian; Y. M. C. A.; Orchestra. "Come over here if you want to see a keen slide."
- D HERBERT DAGUE . . . Portis, Kans. Excelsior; Basketball, '25. "Played to win."
- D FRANCIS HILBERS . . . Spickard, Mo. Excelsior; Y. M. C. A. "The Cook's pride and the 'Sun's' printer."
- + PAUL IMES . . . Ridgeway, Mo. Y. M. C. A.; Excelsior; Track, '24, '25; "W" Association; Theta Chi Delta; Men's Glee Club. "Our Angel waiter."
- JOHN SHEEHY . . . Cameron, Mo. Y. M. C. A.; President, Adelpian; Dramatic Club. "John is a popular man, a preacher and a good sport."
- + HUGH GARNER . . . Cameron, Mo. Adelpian. "One of the Speedster's props."
- PAULINE DAVIS . . . Cameron, Mo. Ruthean. "An accomplished linguist, takes both French and Spanish."
- D GEORGE REED . . . Bethany, Mo. Excelsior; Men's Glee Club; Pep Club. "Although in College he still finds High School attractive."
- + WILLIAM BAYSE . . . Osborn, Mo. Adelpian. "Hard on Dad's Ford."
- NADINE NICHOLS . . . Cameron, Mo. Y. W. C. A.; Ruthean; Criterion Staff; Debate; Pi Kappa Delta; Dramatic Club. "Like Tammyson's brook, she babbles on forever."
- D JOHN A. BOWMAN . . . Cameron, Mo. Adelpian; Alchemist; Theta Chi Delta; Pep Club. "Willie Belle or will'e Eula?"
- ROBERT JAMES . . . Pattonsburg, Mo. Adelpian. "Handsome Bob and his harem."
- EULA MILLER ~~Bowman~~ Skidmore, Mo. Aesthesian; Ladies' Glee Club; Basketball '25; "W" Association. "The girl Byers can't forget."
- LEWIS FROMAN . . . Grayson, Mo. Adelpian; "W" Association. "Works hard, studies hard and plays hard."
- + HELEN MEYER ~~Love~~ . . . Oregon, Mo. Y. W. C. A.; Ruthean; Dramatic Club. "Another reason why Wesleyan is such a nice place."
- ERNEST ROBINSON . . . Green City, Mo. Excelsior; Y. M. C. A. "Reckless youth."
- D + MARION CONKLIN <sup>Wiley</sup> . . . Cameron, Mo. Ruthean; Ladies' Glee Club; Criterion Staff. "A maid so good and fair."
- THENIS WELSH . . . Laclede, Mo. Y. W. C. A.; Aesthesian. "A worry to Miss Lippelt."
- + WILLIAM O'NEAL . . . Cameron, Mo. Adelpian. "Work well done makes pleasure more fun."
- GRACE M. SYDEBOTHAM . . . Cameron, Mo. Ruthean. "To know her is to like her."
- G LADYS FRANCIS . . . Ridgeway, Mo. Ladies' Glee Club and Quartette; Aesthesian. "Why—I don't know anything about these men."
- LYNN FILLEY . . . Cameron, Mo. Men's Glee Club and Quartette; Adelpian. "A jolly good shick."
- FLORENCE SHEPHERD . . . Powersville, Mo. Ruthean; Basketball, '24, '25; Basketball Captain, '25; Captain Elect, '26. "A worthy Basketball leader."
- HAROLD WOOD . . . Jamesport, Mo. Adelpian; Wrestling. "A girl, a girl, my kingdom for a girl."
- GRACE HOLIDAY . . . Cameron, Mo. Dramatic Club; French Club; Pi Kappa Delta; Debate; Ruthean. "Let's go back and begin where we left off."
- + MARTIN GRANTHAM . . . Stamberry, Mo. Adelpian; Football, '23, '24; Basketball, '25. "His free throw won the Jewel game."



D VICTOR COY . . . . Sheridan, Mo.  
Excelsior; Track, '24; "W" Association.  
*"Virgil's young hopeful."*

GLADYS PENNY . . . . Cameron Mo.  
Ruthean.  
*"An ambitious farmerette."*

MARION McNARIE . Hamilton, Mo.  
Excelsior; Alchemist; Y. M. C. A.  
*"Famous—for his 'A' in qualitative."*

JESSIE MILES . . . . Hale, Mo.  
Aesthesian; Dramatic Club.  
*"Why Foxworthy stays in the bookstore."*

† CAROL HENDERSON . Lathrop, Mo.  
Adelphian; Y. M. C. A.; Football, '23,  
'24; "W" Association.  
*"Off again, on again, gone again—Zip!"*

+ RALPH R. HULSE . . . . Rea, Mo.  
Y. M. C. A.; Adelphian; Football, '23,  
'24; Basketball, '25; "W" Association;  
Debate; Pi Kappa Delta.  
*"The bachelor of Ford Hall."*

CHARLES GROOM . . Cameron, Mo.  
Adelphian; Men's Glee Club.  
*"A little man with a mighty voice."*

o PAUL BROWN . . . . Cameron, Mo.  
Adelphian.  
*"As retiring as a politician. The Sleuth."*

o B. A. WAGENKNECHT . . . . Cameron, Mo.  
Excelsior; Ministerial Association;  
Y. M. C. A.  
*"Samson's strength lay in his hair."*

FRANK J. KLEIN . . . Chicago, Ill.  
Adelphian; Dramatic Club; Men's  
Glee Club.  
*"The world is forced to look up to him."*

GILES THEILMAN . Cameron, Mo.  
Adelphian; Pep Club.  
*"A stellar center with the Speedster  
quintet."*

o HAROLD BANGS . . Cameron, Mo.  
Adelphian; Track, '24, '25; Student  
Council; Y. M. C. A.; Theta Chi  
Delta; Alchemist.  
*"Collin's chauffeur."*

N. R. FEILDER . . . Cameron, Mo.  
Excelsior; Ministerial Association;  
Y. M. C. A.; Wrestling Coach; Pep  
Club.  
*"He wrestles with his studies as well as  
with his activities."*

o † FRANCIS MILLER <sup>Linneus</sup> Linneus, Mo.  
Y. W. C. A.; Aesthesian; French Club.  
*"Pleasing and popular with all the  
students."*

MILDRED BETHARDS . Bethel, Mo.  
Ruthean; Y. W. C. A.  
*"Offers many helpful suggestions in  
Methods class."*

o HAROLD COKELY . Skidmore, Mo.  
Excelsior President.  
*"A nice fatherly old soul."*

+ AMY LOOS <sup>Ma</sup> . . . . Cameron, Mo.  
Ruthean; French Club.  
*"I can't be bothered."*

o CORNELIA ENSIGN <sup>By</sup> . . . . Cameron, Mo.  
Ruthean; French Club.  
*"Her black eyes speak, and they speak  
well."*

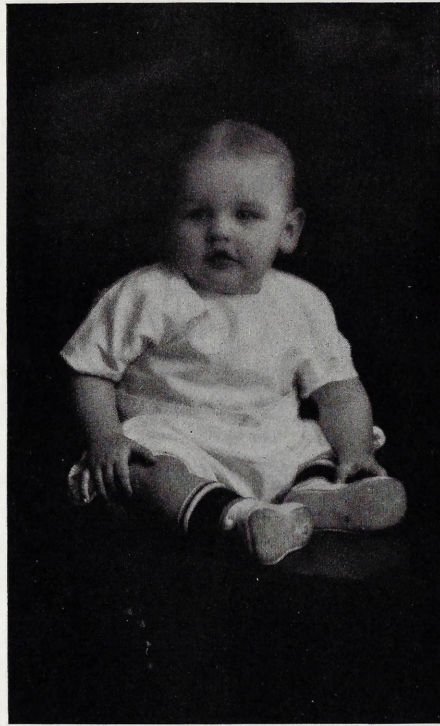
# Optimistic Educators or Scrub Faculty

- Mary Hartigan . . . . . *English*
- John Clark . . . . . *English*
- Mildred England . . . . . *English*
- Mrs. H. B. Massie . . . . . *English*
- Margaret Hartigan . . . . . *English*
- Thelma Gross . . . . . *English-Geometry*
- Elmer Basye . . . . . *History*
- Charles Morelock . . . . . *History*
- Russell Welsh . . . . . *History*
- Mary Bridges . . . . . *Domestic Science*
- Esther Hootman . . . . . *Domestic Science*
- Frank Slayton . . . . . *Agriculture*
- Charles Shaffner . . . . . *Agriculture*
- Robert Jones . . . . . *Algebra*
- Laura Henry . . . . . *Algebra*
- Rex Harboard . . . . . *Arithmetic*
- Fred McKee . . . . . *Physics*
- Robert Kay . . . . . *Physics*
- Ada McCoullough . . . . . *Sociology*
- Austin Simonds . . . . . *Zoology Laboratory*
- Luther Swift . . . . . *Chemistry Laboratory*
- Walter Swift . . . . . *Chemistry Laboratory*
- Eugene Wood . . . . . *Biology Laboratory*
- Marene Elliot . . . . . *Botany Laboratory*
- Grace Baker . . . . . *Commercial English*



MILDRED ROBISON  
*Owl Queen*

Photo by Fred Luce, Cameron, Mo.



*Freshmen*



- † HAROLD KUEBLER<sup>25</sup> . . . Pomona, Kans.  
Excelsior.  
"A young Wesleyanite of great promise  
—from Kansas."
- MARIE E. STEELE . . . . .  
Boxborough, Mass.  
Aesthesian; Glee Club.  
"Short but sweet."
- OMAYNARD JONES<sup>25</sup> . . . Chillicothe, Mo.  
Adelphian.  
"Well, now—I don't know."
- LESTER LUTES . . . Grant City, Mo.  
Orchestra; Adelphian.  
"A mayor's son—but he skated on the  
mill-pond once too often."
- NELLIE B. EVERETT<sup>Clemens</sup> . . . Osborn, Mo.  
Aesthesian; Y. W. C. A.  
"Doesn't love Botany nearly so much as  
Zoology."
- D RALPH PARKS . . . . . Cameron, Mo.  
Football, '24; Basketball, '25; "W"  
Association; Adelphian.  
"Plays end, but not the tail end."
- GEORGIA WELSH . . . Laclede, Mo.  
Ruthean.  
"Innocently believes that it's his first love  
affair."
- BRADFORD EVERETT . . . Osborn, Mo.  
Adelphian.  
"An awful responsibility—looking after  
the Osborn girls."
- DEAN RYBOLT . . . Grant City, Mo.  
Excelsior.  
"Everybody's friend."
- EVA MAY MEDSKER<sup>Landsey</sup> . . . Skidmore, Mo.  
Aesthesian.  
"On one she smiled, and Virgil was  
blessed."
- CHESTER MANSFIELD . . . . .  
Carlow, Mo.  
Adelphian.  
"Little Chester Chesterfield."
- PEARL SHULTZ . . . . . Lucerne, Mo.  
Aesthesian; Y. W. C. A.; Ladies' Glee  
Club; Dramatic Club; Basketball,  
'25; "W" Association.
- WILBERN MOORE<sup>24</sup> . . . Osborn, Mo.  
Adelphian.  
"A gentleman from Osborn."
- CLARENCE PIEPERGERDES . . . . .  
Stewartville, Mo.  
Adelphian.  
"A pleasant face, a cheery word."
- D DOLLYE GRAEFF . . . Osborn, Mo.  
Aesthesian.  
"She has red hair, but still she's sweet  
tempered."
- P PAUL HIBBS . . . . . Brookfield, Mo.  
"Would almost do for a patent collar  
model."
- NINA KINNE . . . . . Hamilton, Mo.  
Aesthesian.  
"Has a charm of gentleness."
- FREDERICK JONES . . . Cameron, Mo.  
Adelphian.  
"A quiet, but a dandy fellow when you  
know him."
- ROBERT MILES . . . . . Hale, Mo.  
Adelphian.  
"Dashes and dares."
- RUTH CRAWFORD . . . Cameron, Mo.  
Ruthean; Y. W. C. A.  
"Earnestness is enthusiasm tempered with  
reason."
- OP PAUL K. CRAWFORD<sup>25</sup> . . . Cameron, Mo.  
Adelphian; Debate; Pi Kappa Delta.  
"He speaks rapidly but surely."
- MARGARET WOOD<sup>Johnson</sup> . . . Cameron, Mo.  
Aesthesian; Glee Club; Dramatic Club.  
"Of strong timber."
- HARRY FERGUSON GILBERT  
BALLON . . . . . Marceline, Mo.  
Adelphian; Y. M. C. A.  
"Needs no eulogy—speaks for himself."
- D HERMAN CASEY . . . Cameron, Mo.  
"He prefers to have them tall and  
graceful."
- WILLIE BELLE WALTERS . . . . .  
Browning, Mo.  
Ruthean.  
"She isn't particular when it comes to  
boys."
- †† FLOYD KINNE<sup>25</sup> . . . Hamilton, Mo.  
Adelphian.  
"Socrates the Second."
- LORENE LAWSON . . . Osborn, Mo.  
Ruthean.  
"Cheerful and willing."
- D † PAGE PENDLETON<sup>25</sup> . . . Marceline, Mo.  
Adelphian.  
"Wild youth astray."
- WILLIAM LOMAX . . . Laclede, Mo.  
Adelphian.  
"A man's a man."
- † VIVIAN KUEBLER<sup>Stanton</sup> . . . Pomona, Kans.  
Aesthesian; Basketball, '25; "W" As-  
sociation.  
"Quiet sometimes, but not on the basket-  
ball court."



- MAURINE EDWARDS . Boomer, Mo.  
Aesthesian; Y. W. C. A.  
"A loyal Freshman lass."
- EULA STOTT . . . Jamesport, Mo.  
Ruthean; Y. W. C. A.  
"One of Beth's charges."
- LOIS GOULD . . . . . Laclede, Mo.  
Ladies' Glee Club; Aesthesian; Y. W.  
C. A.  
"Looks up with such trusting confidence."
- AGNES MEYER . . . . . Oregon, Mo.  
Ruthean; Y. W. C. A.  
"Never had a second-hand idea or notion  
in her life."
- MYRTLE M. EVERETT . . . . . Winston, Mo.  
Aesthesian; Y. W. C. A.  
"Her constant giggle puts the class in a  
wiggle."
- + STELLA CROCKETT <sup>Heckart '24 M '26</sup>  
Unionville, Mo.  
Aesthesian; Y. W. C. A.  
"Boy, howdy! I know something better  
than that. My cow!"
- LEONA DEEM . . . . . Brookfield, Mo.  
"Silence is one of her virtues."
- D LUCILE CAMPBELL <sup>W '14</sup> Cameron, Mo.  
Aesthesian; Y. W. C. A.  
"Thinks twice before she speaks—then  
keeps still."
- + LOIS ALLEN <sup>Bowman '17 Maryville</sup> Cameron, Mo.  
Ladies' Glee Club; Quartet Accom-  
panist; Dramatic Club; Basketball,  
'25; Ruthean; French Club; "W"  
Association.  
"She's always ahead; took Advanced  
Grammar by proxy."
- D RUBY DANIEL . . . . . Cameron, Mo.  
Ruthean; Basketball, '25; "W" Asso-  
ciation.  
"You could always depend upon her sure  
aim."
- D LOUISE ARNOLD . . . . . Cameron, Mo.  
Aesthesian.  
"Originality, Originality, thy name is  
Mary Louise."
- DOROTHY KELLMAN . Lathrop, Mo.  
Aesthesian.  
"She might not know love but she reads  
about it in the Library."
- + DOROTHY DUNCAN <sup>Coy '28</sup> Savannah, Mo.  
Aesthesian; Y. W. C. A.  
"They would fight for her if they knew  
she loved them."
- D PEARL DANIEL . . . . . Cameron, Mo.  
Aesthesian; Dramatic Club; Y. W. C. A.  
"You can count on her having a St. Joseph  
guest on Sundays."
- MARGARET AYERS . . . . . Macon, Mo.  
Ruthean.  
"Stars in Spanish."
- D RUTH PITTMAN . . . . . Cameron, Mo.  
Ruthean; Dramatic Club.  
"Knows what to say, and says it."
- FLOY SWAN . . . . . Hannibal, Mo.  
Ruthean; Debate; Pi Kappa Delta;  
Dramatic Club.  
"George or my traveling salesman—  
which?"
- MILDRED MORRISON . Osborn, Mo.  
Dramatic Club; Aesthesian; Expres-  
sion.  
"A fair-haired damsel from a near-by  
city."
- + FERN BASYE <sup>Moore '21 Osborn</sup> Osborn, Mo.  
Aesthesian; Dramatic Club; Y. W.  
C. A.  
"Completes the 'Bayse Triumvirate'."
- ETHEL NICHOLS . . . . . Cameron, Mo.  
Ruthean.  
"Capable and ever ready."
- IRENE MOON <sup>Samuels '25</sup> Cameron, Mo.  
Ruthean; Dramatic Club; Y. W. C. A.  
"The reason why some boys patronize  
the book store."
- ELIZABETH MOORSHED . . . . . Breckenridge, Mo.  
Aesthesian; Dramatic Club.  
"Has the quietness of one who knows."
- + LUCILE KAY <sup>Nelson '24</sup> Osborn, Mo.  
Ruthean.  
"The best way to find out is to ask."
- CUMA LAY . . . . . Hamilton, Mo.  
Ruthean; Y. W. C. A.  
"One of the lady surveyors."
- DOROTHY WILSON . St. Joseph, Mo.  
"How Bob discovered a town named  
Rothville."
- STELLA HENERY . . . . . Osborn, Mo.  
Aesthesian.  
"She stoops to nothing but the door."
- FLORENCE GOODMAN . . . . . Osborn, Mo.  
Aesthesian; Y. W. C. A.  
"They say her eyes do manipulate."
- + LUCY SHAW <sup>Berner '28 Osborn</sup> Cameron, Mo.  
Aesthesian; Y. W. C. A.  
"Her long hair gives her an air all her  
own."
- + NELLIE FOSTER <sup>Hergert '27</sup> Cameron, Mo.  
Aesthesian; Ladies' Glee Club; Y. W.  
C. A.  
"A mind at peace with all the world."





- FOREST McWILLIAMS . Anity, Mo. Adelphian.  
*"Savin' up his nickels (Nichols)."*
- DEDNA POTTER . . . . . Cameron, Mo.  
*"She abhors the class bells."*
- D DEAN L. SAUCEMAN . . . . . Westboro, Mo.  
 Y. M. C. A.; Excelsior; Men's Glee Club.  
*"Another devilish preacher's son."*
- ORVAL BANGS . . . . . Cameron, Mo.  
*"Emigrated to Cameron High School."*
- + EDWARD KAGAY . Stewartville, Mo.  
 Excelsior; Men's Glee Club.  
*"Vanderslice's twin."*
- NANIE SIMPSON . . . . . Cameron, Mo. Ruthean.  
*"The other Siamese twin."*
- O J. W. BIGGERSTAFF<sup>12</sup> . . . . . Cameron, Mo. Adelphian; Dramatic Club.  
*"The boy who sells 'School Girl' complexion."*
- LOUIN THORNTON . Maysville, Mo.  
 Excelsior; Dramatic Club.  
*"A Trig shark as long as Pitmann comes to class."*
- DORTHY JONES . . . . . Cameron, Mo. Ruthean.  
*"One of the Siamese twins."*
- D + STEPHEN H. SIMS . . . Lathrop, Mo. Adelphian; Wrestling.  
*"Interested in Marriage Bureau Literature."*
- + RALPH MOORE . . . . . Osborn, Mo. Adelphian.  
*"Star student in the Dr.'s class."*
- PHOEBE LOWERY . . . . . Mercer, Mo.  
*"What shall I do with all these men?"*
- CLARENCE BYERS . Cameron, Mo.  
*"Women with him are a necessity."*
- ARABELL GOODMAN . Osborn, Mo. Aesthesian; Y. W. C. A.; Basketball.  
*"Just another Osbornite."*
- D J. DON MILLER . . . . . <sup>Cameron</sup>Holt, Mo. Basketball.  
*"His studies are at Wesleyan, his girl at Utica and his Basketball career at Holt."*
- ALBERT McCOMBS . . . . . <sup>Hamilton</sup>Cameron, Mo.  
*"A typical picture of 'Youth'."*
- EVERETT VANDERSLICE . . . . . Rockport, Mo. Excelsior.  
*"Is it Kagay or is it Vanderslice?"*
- + GOLDIE BOURRETTE . . . . . <sup>H.C.</sup>Maysville, Mo. Adelphian; Football, '24; Dramatic Club.  
*"Freshman idol."*
- CUMA LAY . . . . . Hamilton, Mo. Ruthean.  
*"Precious things are done up in small packages."*
- HELEN CROCKER . St. Joseph, Mo. Ruthean; Y. W. C. A.  
*"She doesn't know for sure but thinks it might be love."*
- PAUL PETERS . . . . . Cameron, Mo. Adelphian; Debate; Pi Kappa Delta.  
*"What he knows is the result of his own efforts."*
- D M. VIOLET FAIRCHILD . . . . . Kansas City, Mo. Aesthesian; Ladies' Glee Club.  
*"A beautiful blonde, no peroxide."*
- + BRACIE A. MORLAN<sup>14</sup> . . . . . <sup>Pollock</sup>Pollock, Mo. Aesthesian.  
*"Her arguments with the Dean are interesting."*

The OWLs

## Thought

SECOND PRIZE POEM

Prize—Five Dollars in Books

Of what is thought? And can it lead one wrong?  
To me, thought sendeth forth every good deed;  
But then you claim, "Some live who it did wrong."  
You err, for never did thought downward lead;  
'Twas lack of it that gave to them sad meed,  
And made them tread a path that's ever rough.  
Now heed Ye this behest, and on it feed;  
E'en though, perchance, you find that it is tough:  
No thought will lead one wrong if deep enough.

Then yield we not to thought because 'tis new;  
For as we know, the new will soon depart,  
And often leave within its vacant lieu,  
A very old thought's fast and failing heart.  
It is not right that we should nurse that heart,  
Which ever fails because it holds a lie;  
Or even store within our mind a part,  
Of anything which black our mind would dye.  
'Tis best this demon to his doom should hie!

Now do not think that all new thoughts are bad;  
For many times we find that they are sage;  
Although these neophytes may not have had,  
As some demand, three hundred years in age.  
A thought to be a truth needs not such age;  
Nor be so common as to have a past.  
Its need is brain that's big enough to gage,  
The depth in which it may be found at last;  
And learn that now as ever it's steadfast.

—Sidney Brown.



MILDRED ROBISON

Most  
Popular  
Girl



JOHN CLARK

Most  
Popular  
Man

Photo by Fred Luce, Cameron, Mo.

## The Academy

There were only nineteen members in the Missouri Wesleyan Academy this year but the work completed was equal to that of a first class high school.

Professor Lester Slayton is the principal of the Academy and he has proved himself a very able instructor along with Maude Gibson who has been affiliated with the department for several years.

Seven students graduated from the Academy this spring. They are: Eddie Kurz, Marion McRae, Burnard Miller, Lois Neel, Alice Bentley, Ollie Belle Dice, Pearl Whitaker, Vera Bonar, and Alice Bentley also received certificates in commercial work.



### MEMBERS OF THE ACADEMY

- Eddie Kurz	- Alice Bentley
- Marion McRae	- Geneva Bentley
- Wesley Foster	- Hadley Crawford
- Leroy Luther	- Marjorie Hallcroft
- Burnard Miller	- Neva Garner
- Gaylord Rybolt	- Ollie Belle Dice
- Ruth Trotter	- Grace Vangundy
- Thelma Potter	- Esther Buzard
- Ruth Ferkins	- Pearl Whitaker
- Lois Neel	- Vera Bonar

Orpha Pollock



LESTER SLAYTON  
Principal of Academy



Leroy Luther, Grace Van Gundy, Orpha Pollock, Neva Garner, Gaylord Rybolt,  
Pearl Whitaker, Ruth Perkins, Vera Bonars, Ollie Dice.

## Music, Expression and Art Departments

The special departments on the following pages have brought many students to Wesleyan.

A glimpse into the catalog will reveal a long list of names of regular and special students.

Herbert C. Kelsey has added distinction to the special work by being honored as Dean of Music.

Missouri Wesleyan is now offering a Bachelor degree in music.

Grace Henderson has improved the standing of the Expression Department greatly.

Carrie Shepherd has made the Art Department one of the most important of the special work.

Lenore DuBois, piano instructor, Gladys Whitt, assistant piano instructor, and Esma Somerville Slayton, voice instructor, are important factors in the high musical standard of Missouri Wesleyan College.

Mr. and Mrs. W. E. Tracy have an unusually large enrollment in their department of instrumental music which indicates their ability.

## Voice Department



Dean Herbert C. Kelsey

Music is a fundamental need to human life. Wesleyan is very proud of her large enrollment this year. The voice students gave many programs and one opera during the year. This spring the opera, "The Gondoliers," was given very successfully. Each character as well as the chorus was presented very beautifully and artistically. We have a number of well trained graduates this year. The Ladies' and Men's Glee Clubs have given a year of very successful programs.

- |                   |                      |                      |
|-------------------|----------------------|----------------------|
| Postgraduates     | Violet Fairchild     | Gaylord Rybolt       |
| Mrs. Esmā Slayton | Norman Fielder       | Dean Sauceman        |
| Luther Swift      | Lynn Filley          | Charles Shaffner     |
|                   | Nellie Foster        | Frank Shaver         |
| Seniors           | Bazzell Foxworthy    | John Sheehy          |
| Eva Crawford      | Gladys Francis       | Florence Shepherd    |
| Lou Gene Evans    | Nila Ganfield        | Betty Slayton        |
|                   | Lois Gould           | Marie Steele         |
| Juniors           | Chas. Groom          | Dorothy Sturman      |
| Elza Wallace      | Vera Herring         | Walter Swift         |
| Joe Williams      | Grace Holliday       | Floye Swan           |
|                   | Amy Loos             | Grace Sydebotham     |
| Unclassified      | Ralph McFarling      | Charles Taylor       |
| Gilbert Ballou    | Marian McRae         | Mrs. True Taylor     |
| Maude Bauer       | Eula Miller          | Willie Belle Walters |
| Carl Bauer        | Lois Neel            | Georgia Welsh        |
| J. W. Biggerstaff | Rex Orr              | Margaret Wood        |
| Vera Bonar        | Floyd Pollick        | Eugene Woods         |
| May Parker Cash   | Hazel Porter         | Ralph Whipple        |
| Lorraine Coates   | Mrs. C. C. Pritchard | Dorothy Wilson       |
| Helen Crocker     | George Reed          | Dim Wyatt            |
| Stella Crockett   | Mildred Robison      | Faye Wyatt           |

## Piano Department

The Piano Department is one of the strongest at Missouri Wesleyan. Each year it enrolls a large number of students, many of whom are at Wesleyan for the express purpose of taking advantage of its opportunities. Under the able direction of Miss Lenore Dubois and Miss Gladys Whitt, the department has made noticeable progress during this year. The numerous recitals and public programs are most beneficial to the people of Cameron and vicinity, in addition to the students.

### POSTGRADUATE

Flora Lee Sims

### JUNIORS

Isabelle Prugh, Mary Hartsook

### UNCLASSIFIED

- |                      |                          |
|----------------------|--------------------------|
| Louise Arnold        | William Lomax            |
| Martha Jane Anderson | Doris Jean Maxwell       |
| Emma Baker           | Elizabeth Moorshed       |
| Mildred Bender       | Inez Myers               |
| Marion Buck          | Lois Neel                |
| Pauline Burgess      | Josephine Neighbors      |
| Ruth Burah           | Orpha Pollock            |
| Katherine Caldwell   | Geraldine Selle          |
| Lorraine Coates      | Stella Crockett          |
| Hadley Crawford      | Ruth Crow                |
| Wilford Crawford     | Marlene Dalke            |
| Hulda Ford           | Goldie Diven             |
| Nellie Foster        | Florence Margaret Dorsey |
| Gladys Francis       | Bertha Dobson            |
| Violet Fairchild     | Lois Douglas             |
| Donna Hagan          | Joseph Greenfield        |
| Mary Hartigan        | Evelyn England           |
| Grace Holliday       | Francis Louise England   |
| Marion Hulsizer      | Grace Farmer             |
| Margaret Jones       | Dorothy Sturman          |
| Dorothy Jones        | Orene Sydebotham         |
| Berenice Jones       | Willie Belle Walters     |
| Berenice Kranz       | Faye Wilhoit             |
| Virginia Klepper     | Dorothy Wilson           |
|                      | Fay Wyatt                |



## Expression

MISS GRACE HENDERSON

To think big thoughts is the result of a true education. But to think big thoughts is not enough; one must be able to express his thoughts in a pleasing, forceful manner. The Expression Department of Missouri Wesleyan College is training its students to express themselves well and to interpret the thoughts of others to appreciative audiences.

### POSTGRADUATES

May Parker Cash                      Goldie Diven                      Angela Taylor

### SENIORS

Grace Holliday

### JUNIORS

Fern Bayse                      Ruth Pittman                      Helen Meyer

### UNCLASSIFIED

Rosa B. Asher	Mary Louise Law	Mildred Robinson
Ruth Ballinger	Irene Kimes	Pearl Shultz
Pauline Davis	Jessie Miles	Lorraine Shirts
Catherine Gale	Irene Moon	Ruth Trotter
Vera Herring	Elizabeth Marshead	Annabelle Withington
Bernice Hopper	Mildred Morrison	Margaret Wood
Dorothy Jones	Gladys Penny	Elza Wallace

1925

## Orchestra

Professor W. E. Tracy

Mrs. W. E. Tracy, Violin Instructor

The Hesperian Orchestra is one of the important college organizations. Under the efficient direction of Prof. Tracy they have acquired an enviable reputation that is ever increasing.

They played a prominent part in most of the musical activities of the college. The success of the Christmas and Easter cantatas, and the opera "Gondoliers," was due largely to them.

We feel indebted to the many town people who take an active part in the organization.

### VIOLIN

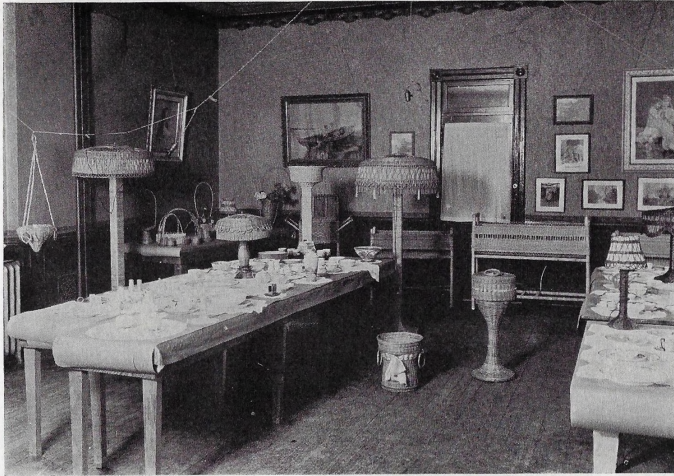
Unclassified

Glenn Adams	Donna Hagan	Almer Sheehy
Emma Baker	Ross Kelsey	Ruth Snyder
Blanche Crowe	Doris Jean Maxwell	Bobby Tibbits
Claire Fiddick	Willard McClintock	Loraine Todd
Darrel Fiddick	Virginia Porter	Boyd Wilhoit
Lela Graeff	Elizabeth Shackelford	Merl Williams
	Maurine Sloan	

### OTHER INSTRUMENTS

Clyde Ailiff	Lester Lutes
John A. Bowman	Doris Gene Maxwell
Forrest Brown	Willard McClintock
Eva Crawford	Ray McCommas
Emil Dieterich	Ray Neff
Robert Daily	Homer Ocker
Donald Eaves	Will Rolfe
Lou Gene Eaves	Gaylord Rybolt
Lowell Folsom	John Sheehy
Darrell Fiddick	Roy Schnieter
Herbert Gale	Pennington Thomas
Nila Ganfield	Boyd Wilhoit
Paul Imes	Faye Wyatt
Kermit Knoch	

1925



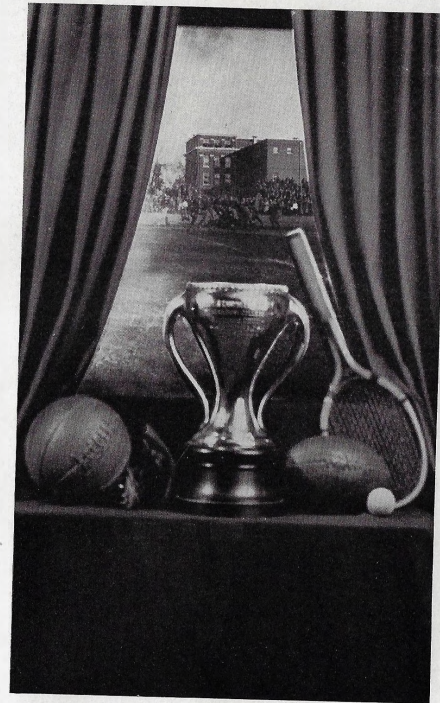
CARRIE SHEPHERD, *Art and Basketry*



SUSAN MILLIER, *Home Economics*



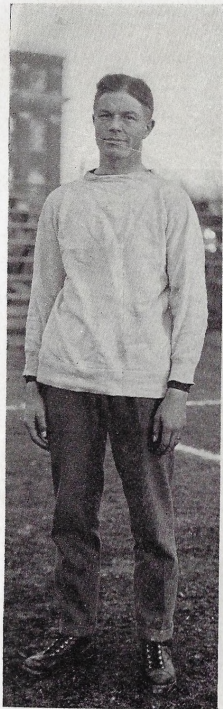
The OWL



ATHLETICS

1925





WILLIAM N. COLLINS, Athletic Director.

A coach that is capable of losing only two football games, producing the M. C. A. U. track championship last spring and with the prospects of capturing the title again this year—is the record established by "Bill" Collins in two years. Collins was a great halfback at Missouri University for three years and, later, Freshman Athletic Director at Liberty High School for two years. Bill is a strategic, shrewd mentor but his influential personality is equally as potent.

LESTER SLAYTON, Assistant Coach.

Coach Collins finds a right-hand man in Lester Slayton, Assistant Coach, who has charge of the Freshman football men. "Less" put such fight into the beginners that they always gave the varsity a real competition. Slayton is coach of the girls' basketball team and his worth is manifested in the basketball season just closed. He is a graduate and former star athlete of Wesleyan; having played three years of football, and a member of the track team for two seasons.

CAPTAIN MORELOCK, L. G.

Brick made the Captaincy of the second All-State Team and his third letter here this year. We hope he has as successful a team next year as the team he played with in '25.

CAPTAIN-ELECT WHIPPLE, H. B.

Whip makes as pretty a sight charging with head down as any football lover cares to see. And he is no slouch as a ground gainer. He will pilot a he-man team next year. Then he goes.

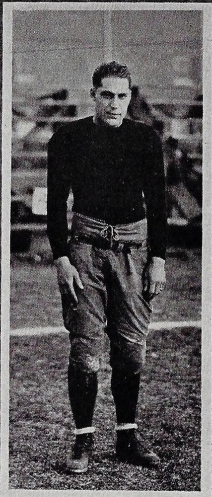
CHARLES SCHAFFNER, Q. B.

Cherry has called his last signal for our Black and Red team. He has been consistent in good generalship for four years. The quarterback who fills his shoes must be a man.

WALLACE THEILMAN, G.

Wallace showed his speed for the first time this year. But he is 195 pounds of game' guard who doesn't know what quit means. He, like Cherry and Brick, has played his last game for old M. W. C.



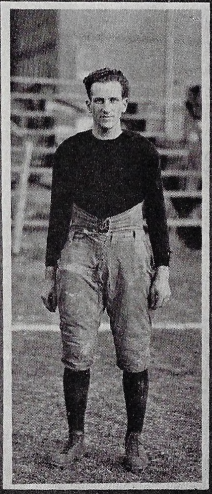
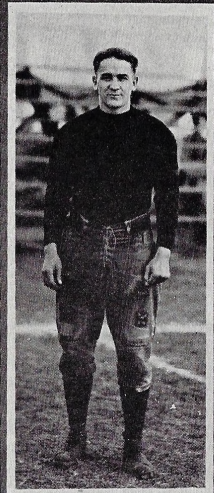


WILLIAM McCULLOUGH, L.T.

Bill is another fellow who does not know when to stop. He made his first letter this year but he earned it. Bill has two more seasons to defend Jasper and he has 180 pounds to do it with.

JOHN A. CLARK, JR., F. B.

For three consecutive years he was an All-State full-back and the most discussed College player in the State. He is a triple-threat man and always furnished sensations with his long end runs. For four years he has honored the Wesleyan Gridiron.

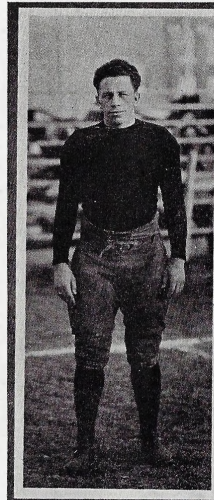


EMMET WYRICK, H. B.

Tubby won his first letter this year and was a dependable half. He is an accurate tackler and his speed makes him valuable as a ball-lugger.

EVERT CLEMENS, R. E.

Clemens had a man's job at end this year and he filled it well. When it comes to "Spiking" ask Coach. Clemens has two chevrons now and a good chance for one more. We need him in '26.



RALPH HULSE, L. T.

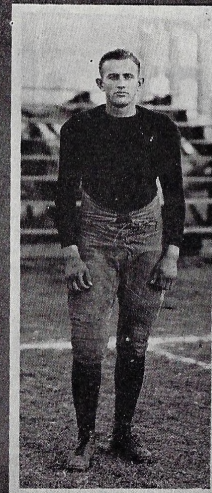
Hulse made his second letter this year and will be one of Whip's best men next year. He always gets his man and he makes a formidable opponent every time he gets in the game.

GOLDIE BOURETTE, Q. B.

"Pewee" wore his first green cap and made his first big "W" this year. A quick thinker and speedy runner, Pewee ought to make a dangerous quarterback for Jasper these next three years.

WALTER PIBURN, R. T.

"Skeet" is another one of those fellows that surprised M. U. Hard hitting on offense and impenetrable in defense Skeet is an "A-1" linesman. And he slings a nifty toe. He has three "W's" and one to go.



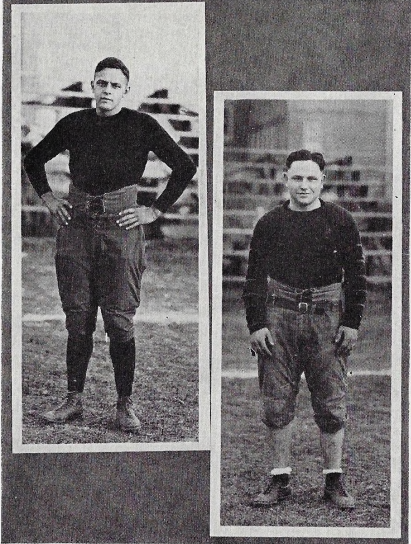
CARROL HENDERSON, C.

Zip has been one of the bulwarks in the Wesleyan line for two seasons. At center he is an accurate passer, and on defense he is keen at sizing up the plays of the opponents. He has two more years with us.



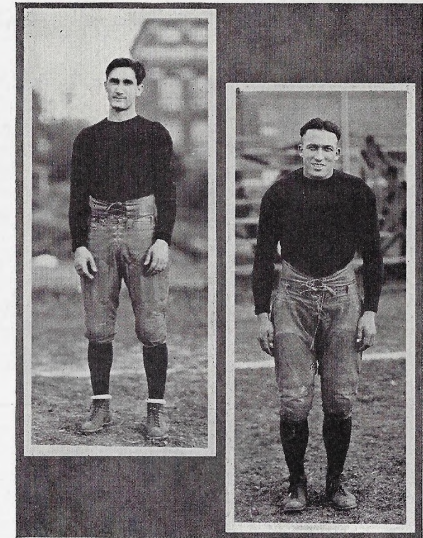
**MARTIN GRANTHAM, F. B.**  
 Grantham is a consistent ground gainer and point maker. Fullback on the second All-State Team, there is no reason why he should not make the first. Two letters made and two years to take Clark's place.

**RALPH PARKS, L. E.**  
 This is Toad's first year at Jasper and he makes a promising end. Toad is fast on his feet and can catch a pass. He has three years to wear the Black and Red.



**FRANK SLAYTON, L. E.**  
 Slayton played his best this year for Wesleyan and he made a wicked end. He finishes his football career on the Second All-State Team with three "W's." Good luck, Frank.

**WILLIAM GILCHRIST, C.**  
 Billie is a whang of a Center as some of M. U.'s team found out. There never is a hole where Billie plays; just 190 pounds of bulldog fight. Three letters and a year to go.



**ERWIN SWEEM, Q. B.**  
 "The fastest and brainiest quarterback in the conference." That is what Cochrane said of Sweem, and we agree with him. Sweem has made his letter for three years and will make it again next year, no doubt.

**JAMES SHULTZ, L. G.**  
 Jimmie has made three "W's"; twice the All-State Team and for the last two years has played every minute of every game. Some record! He will be another of Whip's stand-bys.

### Schedule for 1924

Missouri Valley . . . 8	Wesleyan . . . 13
Missouri University . 14	Wesleyan . . . 0
Warrensburg . . . 0	Wesleyan . . . 16
Central . . . . 0	Wesleyan . . . 42
Westminister . . . 13	Wesleyan . . . 7
Tarkio . . . . 6	Wesleyan . . . 14
Rolla . . . . 6	Wesleyan . . . 10
William Jewell . . . 7	Wesleyan . . . 35

## Review of the Football Season of 1924

The first contest of the season was with the Vikings of Missouri Valley. In spite of the havoc wrought by previously precipitated moisture on the field our boys opened the season with a victory, defeating the opponents 13 to 8.

Then we went down to Columbia and took a drubbing from the Tigers 14 to 0, the same score that Missouri beat Kansas. Missouri made one touchdown the last quarter of each half. The boys put up a real fight and gained the admiration of both friend and foe.

The fighting Wesleyanites satisfied the local football fans by breaking the Warrensburg Mules by a score of 16 to 0. This despite the fact the team was still showing traces of their encounter with the Tigers.

We suffered our second and only defeat of the season from Possum Pixlee Blue Jays, 13 to 7. Our team was out-scored but not outplayed by the heavier Blue Jay squad. Every man deserves credit for his stellar playing, especially June, who did most of the ball carrying.

At Fayette we carried away a victory, bringing down the Eagles with a score of 42 to 0. Eight times the Centralites were within scoring distance but lacked the drive to put it over. The last half Collins Gridsters wore themselves out scoring touchdowns.

Tarkio was overpowered in a game of 13 to 6 that was one-sided the first half, for the Methodists, however the Tarkio men returned the second half and scored a touchdown.

The Rolla School of Mines was beaten in a 10 to 6 count. A place kick that gave us three points was made by Piburn giving us the first score of the game. Clark made the most sensational play ever seen on the home field when he picked a Rolla pass out of the air and with timely defense by other players ran 92 yards for a touchdown.

Turkey Day the team broke the jinx. The Bill Jewell Cardinals fell under the battering attack of Captain Morelock and his mates. In this, their last football game for their Alma Mater, Slayton, Shaffner, Morelock and Clark played in faultless fashion. The gridiron stars of M. W. C. held like a stone wall threatening Jewell with end runs, line plunges and passes. No victory was ever received with greater enthusiasm than the 35 to 7 tally.

## Wesleyan Wrestling Team

N. R. Fielder, Coach

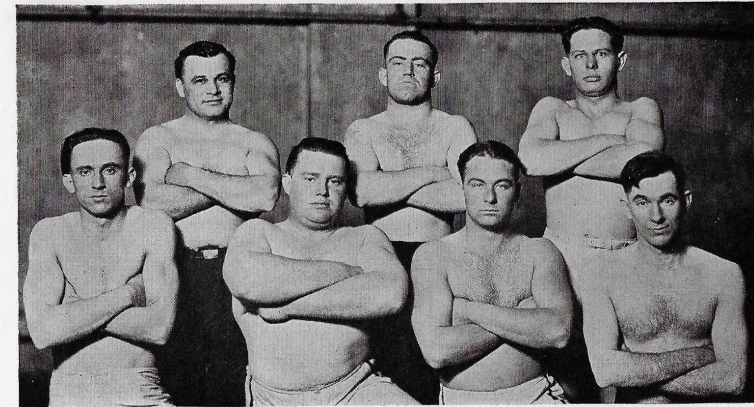
Many students will undoubtedly read this page and wonder whence came the source, but a closer examination will reveal the fact that a new branch of sport has been added to the list of M. W. C. athletic activities.

Norman R. Fielder, a wrestler of no small distinction in several states, is the welterweight champion of California and last winter he wrestled the title from Frank Reynolds, Illinois welterweight champion, by taking two straight falls, the first in 1:58 and the second in :58:6, at Columbus, Ohio.

Fielder was boxing and wrestling director at Mare Island Naval Station for one year, at San Diego Y. M. C. A. for one year, and was boxing and wrestling instructor at the Hannibal, Mo., Y. M. C. A. for a year and a half.

He opened wrestling classes at the local Y. M. C. A. and worked with a college class of seventeen members.

It is rumored that Wesleyan will have boxing and wrestling in her athletic schedule next term and Fielder with his experience should come into his own as a Wesleyan athlete.

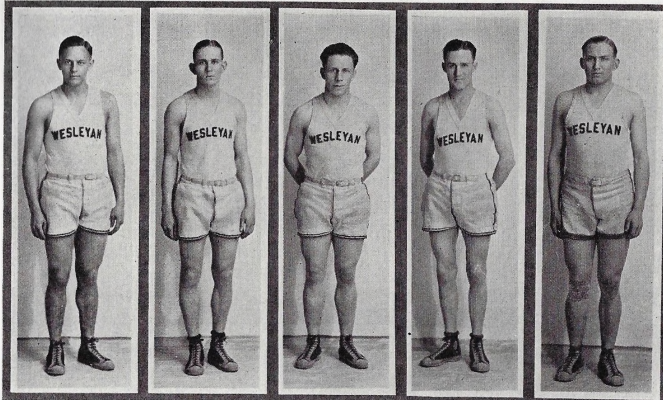


Top Row—Sheehy, Fielder, Wood.

Bottom Row—L. Robinson, Sims, Whipple, Brown.

The OWB

## Basketball Team of 1925



Wesleyan is justly proud of the showing made by the basketball team this year. Comparing the team standing with the ones of previous years, one will readily see how Coach Collins is improving the court game.

The season opened with Maryville, a non-conference game, and the Bear-cats easily defeated the Wesleyan team, but it was a real test for the new men and in the course of one week, Collins had worked up a combination that outclassed Central-Wesleyan.

The team played nine conference games, winning five and losing four. One game with Central was lost by just two points, but the Eagles soon lost the prestige of the victory when Wesleyan making a big road trip, playing conference games, reached the climax of her team work and humbled the Central five on her own court.

A defeat over William Jewell on the local court aroused the Wesleyan rooters to its highest enthusiasm when the game closed with a free throw by Grantham, breaking the see-saw game which had resulted into a 24 to 24 tie. Jewell, however, evened the count by administering to Wesleyan on the small Liberty High Court.

Frank Slayton and Emory Lower were the only letter men on the squad. Most of the team was composed of under-classmen.



Don Miller, Frank Slayton, Martin Grantham, Emory Lower made letters at the Guards' positions. This quartet played well on the defense, and were equally capable of pitching the ball through the hoop. To Grantham goes the laurels for winning the Jewell game in the closing seconds of the play, with a free throw. He was, perhaps, the outstanding player of the season.

"June" Clark and Fred McKee handled the center positions in a faultless manner. Both men were good on getting the tip-off and caging baskets.

"Ace" Parks, Lige Walker, "Herb" Dague, Ralph Hulse, should be congratulated for their ability to carry the offensive work of the team. Walker and Parks were the fastest men on the squad, while Hulse and Dague were always experts with the ball.

Prespects for next season are most pleasing, considering that seven letter men are back.

### SCHEDULE FOR 1925

Maryville . . . . .	42	Missouri Wesleyan . . .	11
Central-Wesleyan . . . . .	19	Missouri Wesleyan . . .	34
Jewell . . . . .	24	Missouri Wesleyan . . .	25
Missouri Valley . . . . .	11	Missouri Wesleyan . . .	34
Central . . . . .	31	Missouri Wesleyan . . .	29
Westminister . . . . .	44	Missouri Wesleyan . . .	11
Central . . . . .	19	Missouri Wesleyan . . .	25
Maryville . . . . .	35	Missouri Wesleyan . . .	19
Missouri Valley . . . . .	20	Missouri Wesleyan . . .	24
Westminister . . . . .	42	Missouri Wesleyan . . .	23
Jewell . . . . .	45	Missouri Wesleyan . . .	20

## The Red Jacket Basketball Team



Coach Slayton, Hulsizer, Miller, Kuebler, Mrs. Slayton,  
A. Goodman, Shultz, Gross,  
Daniel, Capt. Shepard, Allen, England

The Wesleyan girls' basketball team, or the "Red Jackets," had a very successful season with a heavy schedule of fifteen games.

Eleven contests were carried away by the Red Jackets against four defeats, one of which was a 28 to 26 game to the Jolly Girls from St. Joseph.

It took Coach Slayton several weeks to mould the machine that sped along at a winning clip.

Palmer came here for the first game and won from an inexperienced sextet by a relatively small count. Then the Red Jackets met the Maryville "Cubs" for two games and the Cubs rather soiled the Jackets with a ferocious attack—but it was experience that sent them into a winning streak.

After the close game with the Jollies, which the aforesaid won; the Wesleyan girls went undefeated in the remaining games.

Wesleyan will lose three stars by graduation—Marian Hulsizer, Mildred England and Thelma Gross. However, five of the letter girls are Freshmen and will return to form a championship squad next year.

Florence Shepard has been chosen to pilot the squad another year. She is fast on the court and her steadiness in play makes her a valuable center.

Daniels and Allen, forwards, were the best goal-shooting combination. With three more years to honor Wesleyan, they should prove a pair of gold securities.

Gross and Hulsizer are leaving the team this year with an enviable record as accurate eagers and classic performers on the court.

Miller and England, centers, were consistent throughout the season. Miller was exceptionally fast and England was efficient in giving her team-mates the tip-off.

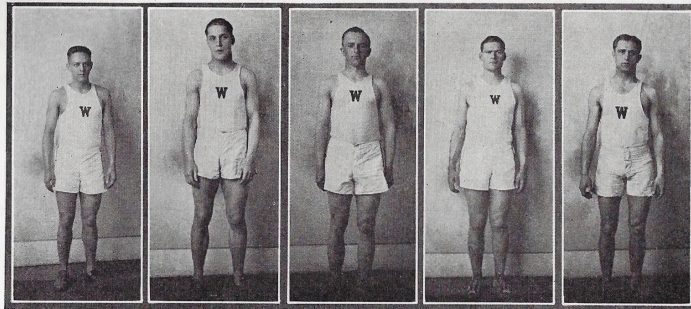
Goodman, Shultz and Kuebler were a trio of guards that deserve a goodly share of the honor for the big season.

Coach Slayton has proved himself a worthy mentor of girls' basketball and with the source of material for next year should go through the season undefeated.



### GAMES OF THE 1925 SEASON

Palmer . . . . .	26	Wesleyan . . . . .	20
Maryville . . . . .	42	Wesleyan . . . . .	28
Kidder . . . . .	15	Wesleyan . . . . .	27
Maryville . . . . .	56	Wesleyan . . . . .	29
Palmer . . . . .	6	Wesleyan . . . . .	18
Jollies . . . . .	28	Wesleyan . . . . .	26
Jollies . . . . .	18	Wesleyan . . . . .	28
Camden Point . . . . .	9	Wesleyan . . . . .	28
Kansas City Y. M. C. A. . . . .	17	Wesleyan . . . . .	37
Converse . . . . .	17	Wesleyan . . . . .	18
Cameron H. S. . . . .	18	Wesleyan . . . . .	40
Turney . . . . .	20	Wesleyan . . . . .	24
Osborn . . . . .	25	Wesleyan . . . . .	40
Altamont . . . . .	21	Wesleyan . . . . .	41



**CAPTAIN FRANK SLAYTON.**

Frank was always to be depended upon for points in the mile, two mile or half-mile run. He was a real leader and led his team to a championship. In the State Meet he won second in the mile. This year is his last year with us and we are expecting it to be his best year.

**CAPTAIN-ELECT JOHN A. CLARK, JUNIOR.**

By his wide athletic versatility and marvelous track ability has been elected captain and is to lead his team to another championship this year. June tore things up at the State Meet. He won first in the low hurdles, second in the high hurdles, 100 yard dash and broad jump and won third in the pole vault. He was awarded the individual high point cup.

**GILBERT TEMPLE.**

"Gib" may be small but he is fast as a flash in the 100 and 220 and is one of Wesleyan's dependable half-mile relay men.

**LEO LATTIN.**

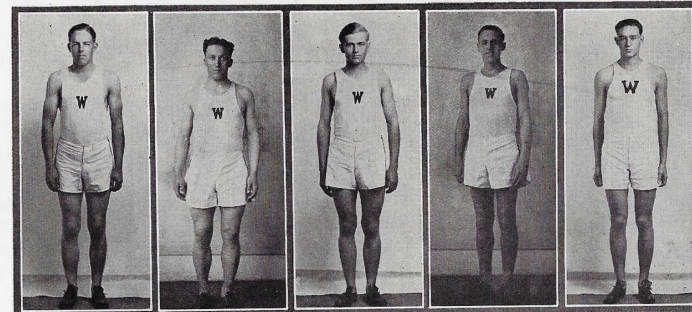
Leo was wholly a shot man and did not show any form until late in the season. He won second in the shot at the State Meet. As a Jayhawk he should add many laurels to Mt. Oread.

**ROBERT CASTLE.**

Bobby was almost like a rubber ball and in every meet he could be expected to take points in both the high and broad jump.

**WESLEY CRAMER.**

"Wes" was just a Freshman last year and he surprised everyone. At the State Meet he heaved the javelin far beyond all competitors and set a new State Record in that event.



**HAROLD BANGS.**

Harold comes to us from Cameron High School and we are more than proud of him. He is such a clean athlete and so quiet and reserved in his manner that the entire school admires him. At the State Meet he placed second in the 440 yard dash and also ran on the record breaking mile relay team.

**JAMES SHULTZ.**

Jimmy is a Junior this year but last year he showed his track ability by winning the 100 and 220 yard dashes in every meet and by also taking a second or third in the low hurdles. He was also Wesleyan's best shot putter. We are expecting him to break a few records at the State Meet this year.

**VICTOR COY.**

"Freshman" hailed from Sheridan, Mo., if there be such a place, and was the smallest and youngest member of the track squad. But his speed and endurance won a place for him upon both relay teams which were cup winners at the State Meet.

**WALLACE CROY.**

Wally was a good discus man, though unfortunately he failed to place in the State Meet at Jewell last year. We hated to lose Wallace by graduation.

**PAUL IMES.**

Imes was a Freshman and had never had any track experience. But he took advantage of his ostrich-like legs and developed fast into a quarter miler. He made the mile relay team and ran away from his man at the State Meet.

**WILLIAM SLAYTON.**

The Slaytons seem to be "born" athletes, for both Frank and Bill were three letter men last year. Bill excels in the weights. He also runs the high hurdles and was a member of the mile relay team that set a new mile record last year.



Mile Relay Team

Half Mile Relay



1924 Track Champions

## Track Review

The track season of '24 was the most successful one that Missouri Wesleyan has witnessed in the history of the school. There were four dual meets, the state meet and the K. U. relays in which Coach Collins' team participated. So far as Missouri Wesleyan is concerned our slate is clean. Not a single defeat was administered to our fighting squad.

Chillicothe came here for the first meet and it proved to be only a practice for the Wesleyan men, as the Business College did not place in a single track event. The final score, 97 to 18, was a faithful criterion of the meet. Clark with 20 points was high point man.

Then came the K. U. relays, with Wesleyan in attendance. The competition between the larger schools was too keen for Wesleyan to show up well. Consequently, Wesleyan scored but a single point and that when Junior Clark placed fourth in the high hurdles. It is of some note to know that Clark took fourth place only a few inches behind the other three University men, the winner's time being fifteen and three-fifths seconds.

At Kirksville, where Wesleyan had always won in track, Coach Collins found the competition to be stronger than ever before but regardless of the "great strength of the enemy," we brought home another victory. Bill Slayton, by scoring 22 points, was the outstanding athlete of the meet. Here, Bangs and Coy, both Freshmen, showed their track ability and won for themselves a regular berth on the squad.

A dual meet with Wentworth Military Academy, they not being in our Conference, again proved the prowess of the Wesleyan team. The score was 62 to 43. Taubman of Wentworth was high point man.

It is with pride we look upon the dual meet with Jewell for a victory over our old rival means much more than victory; it marks a successful season. Every Wesleyanite put his whole effort against the Cardinals and when the last relay had been run, there was no doubt as to Wesleyan's superiority. They showed us a hard battle but they lost to a much better team by a score of 68½ to 53½. Shultz with 18 points was individual high point man.

On May 16th came the state meet at Liberty, to which Wesleyan had been looking forward throughout the season. The day broke bright and clear and was ideal for a track meet. In the morning the preliminaries in the dashes and hurdles were held and Wesleyan placed men in every event. In the afternoon, after the first few events had been held, Wesleyan loomed up as a certain winner.



Wesleyan continued scoring throughout and the final score found Wesleyan with a victory and a championship. Jewell had fallen by the wayside and were in fourth place. Central had captured second place.

The bright spots of the meet were: A new low hurdle record by Clark of M. W. C., who ran the low sticks in twenty-five and five-tenths seconds; a new record in the javelin when Wesley Cramer, M. W. C. Freshman, heaved the fairy wand 164 feet; the breaking of the high jump record by Walknup of Tarkio, and the new mile relay record of three minutes, thirty-nine and four-fifths seconds made by Wesleyan's team which was composed of Coy, Imes, B. Slayton and Bangs.

Clark won the gold loving cup for being high point man with fifteen points. Shultz, of Wesleyan, was next in number of points scored, with eleven.

MISSOURI WESLEYAN BEST TRACK MARKS

Event	Holder	Time
100-Yard Dash . . . . .	Shultz . . . . .	10
220-Yard Dash . . . . .	Shultz . . . . .	22.9
440-Yard Dash . . . . .	Coy . . . . .	52.3
880-Yard Dash . . . . .	Sewell . . . . .	2:02.1
One-Mile Run . . . . .	F. Slayton . . . . .	4:52
Two-Mile Run . . . . .	F. Slayton . . . . .	11:09
Low Hurdles . . . . .	Clark . . . . .	25.5
High Hurdles . . . . .	Clark . . . . .	15.4
Mile Relay . . . . .	Coy	3:39.3
	Imes . . . . .	
	W. Slayton	
	Bangs	
Half-Mile Relay . . . . .	Temple	1:35
	Clark . . . . .	
High Jump . . . . .	Shultz	5 feet 10 inches
	Medley . . . . .	
Broad Jump . . . . .	Medley . . . . .	22 feet 1½ inches
Discus . . . . .	Conklin . . . . .	127 feet 6 inches
Shot Put . . . . .	Conklin . . . . .	40 feet 9 inches
Javelin . . . . .	Cramer . . . . .	164 feet 7 inches
Pole Vault . . . . .	Clark . . . . .	11 feet 3 inches



## Le Cercle Francais

*President* . . . . . William O'Neal  
*Secretary* . . . . . Mildred Bender  
*Librarian* . . . . . Charles Morelock

Allen, Lois	Miller, Frances
Arnold, Mary Louise	Morelock, Charles
Buck, Anna	Page, Lehman
Deem, Leona	Robison, Levy
Downing, Mildred	Schonk, Thelma
Elliot, Mildred	Shaw, Lucy
Ensign, Cornelia	Theilman, Giles
Garner, Neva	Tomlin, Jay
Hallcroft, Marjorie	Bender, Mildred
Holliday, Grace	Diven, Goldie
Loos, Amy	Garner, Hugh
Meyer, Agnes	Hulsizer, Marion
McCullough, Ada	O'Neal, William

Douglas, Lois

This French Club was organized this year by the instructor, Edna Garner, and met semi-monthly. It was composed of second and third year students. The hours were spent in reading La Petit Journal poetry and playing games.



# Ruthean Literary Society

Motto—Vite sin littris moro est  
Colors—Cardinal and Straw  
Flower—Red Rose

## OFFICERS

First Semester		Second Semester
Esther Hootman . . . . .	<i>President</i> . . . . .	Mary Bridge
Marion Conklin . . . . .	<i>Vice-President</i> . . . . .	Pauline Wiley
Florence Shepherd . . . . .	<i>Secretary</i> . . . . .	Marene Elliott
Nila Ganfield . . . . .	<i>Treasurer</i> . . . . .	Virginia Kemper
Mrs. Massie . . . . .	<i>Chaplain</i> . . . . .	Ruth Pittman
Mary Bridges . . . . .	<i>Chorister</i> . . . . .	Marion Conklin
Mildren Robison . . . . .	<i>Pianist</i> . . . . .	Lou Gene Evans
Thelma Gross . . . . .	<i>Sergeant</i> . . . . .	Esther Hootman
Helen Meyer . . . . .	<i>Criterion Reporter</i> . . . . .	Helen Meyer



Several important events have marked the Ruthean program of the past season.

The first one of importance was the reception to the new members who were pledged under the new plan of the Literary Council. Memories of the football banquet will linger long in the minds of the gridiron warriors who feasted like Norse warriors in Valhalla.

Fortunate were those that attended the Annual Banquet. It was served in typical Ruthean style and will serve as a criterion for banquets that the guests will attend in the future.

May 23 the society entertained Mrs. Reed and Miss DuBois with a farewell party in honor of their active interest in the organization.

Eighteen members will graduate this year. They will be greatly missed by their sisters, but "Once a Ruthean always a Ruthean."

# Adelphian Literary Society

Motto—"Esse quam videri"  
Flower—Hyacinth  
Colors—Blue and White

## OFFICERS

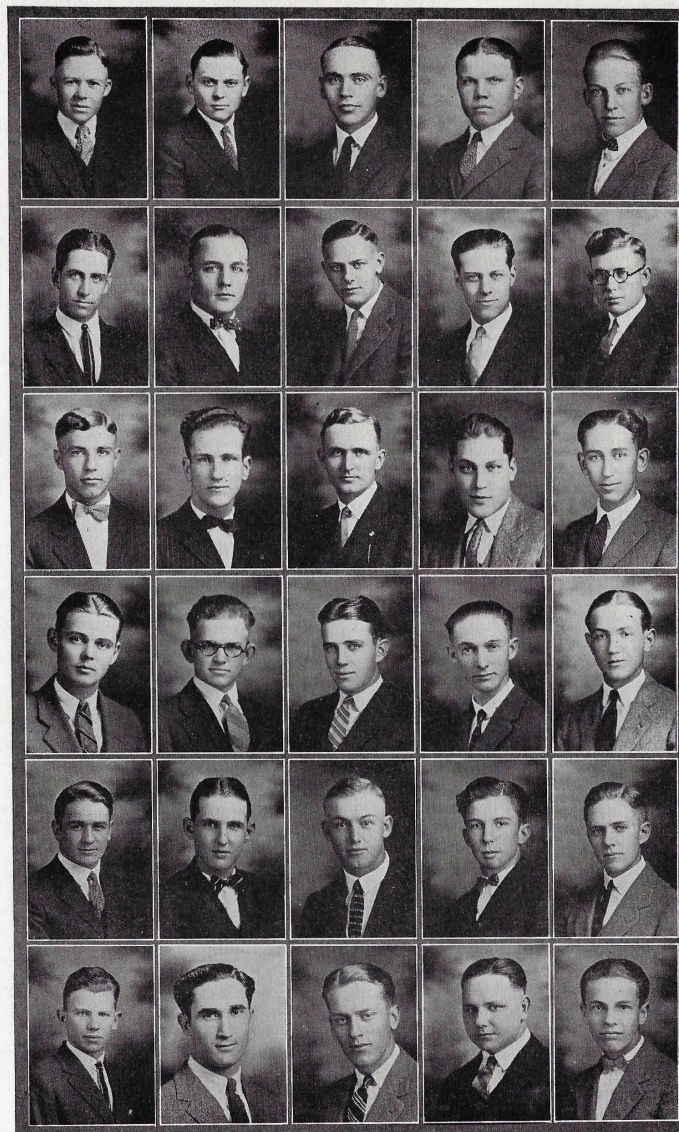
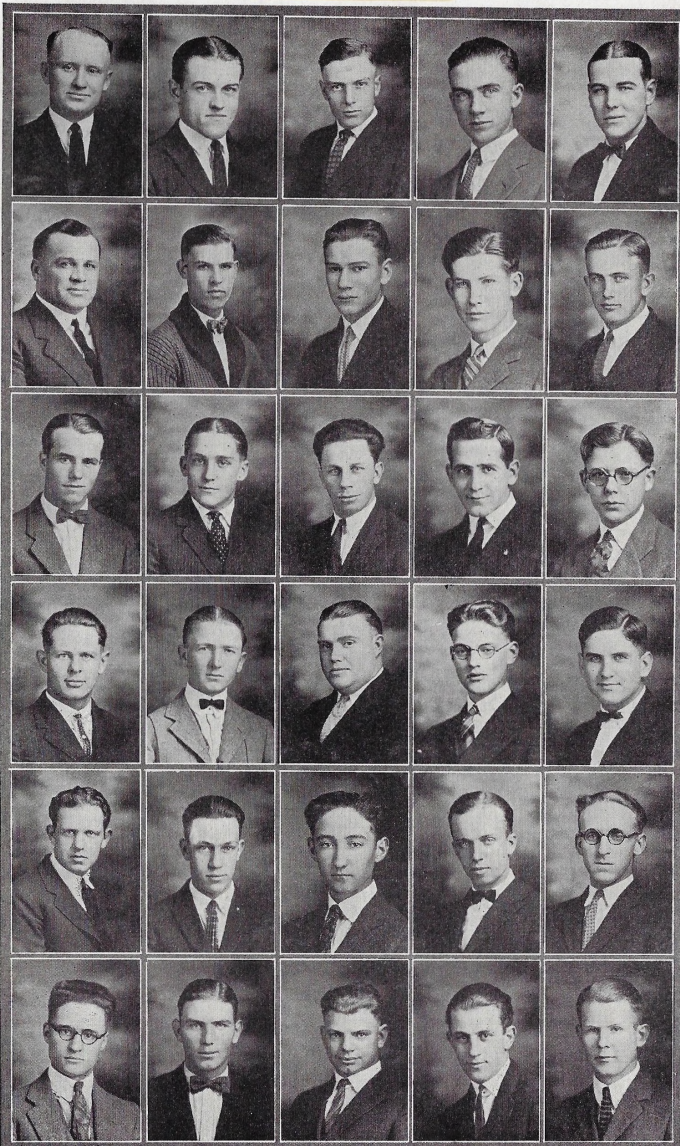
First Semester		Second Semester
Chas. Shaffner . . . . .	<i>President</i> . . . . .	Walter Swift
Bazzell Foxworthy . . . . .	<i>Secretary</i> . . . . .	Lynn Filley
Elza Redman . . . . .	<i>Treasurer</i> . . . . .	William O'Neal
H. B. Massie . . . . .	<i>Chaplain</i> . . . . .	John Sheehy
Lynn Filley . . . . .	<i>Chorister</i> . . . . .	Chas. Shaffner
Emmet Wyrick . . . . .	<i>Literary Critic</i> . . . . .	Frank J. Klein
Walter Swift . . . . .	<i>Music Critic</i> . . . . .	Bazzell Foxworthy
Ralph Hulse . . . . .	<i>Attorney</i> . . . . .	Roy Schneider
Harold Wood . . . . .	<i>Sergeant</i> . . . . .	Martin Granthum
Joe Greenwood . . . . .	<i>Pianist</i> . . . . .	Joe Greenwood
Harold Bangs . . . . .	<i>Society Council</i> . . . . .	Harold Bangs



Adelphians Brothers together. This we are and may it be ever thus.

Our entertainment for the pledges was the first social event of the season. Followed by the initiation service that was beautifully solemnized. Awed before the sacred and ancient mysteries the candidates bound themselves to service for the building of a better Wesleyan. The new members bid fair to uphold the standing of the society in times past in scholarship, literary and athletic pursuits.

The Seventeenth Annual Banquet was held at the Odd Fellows' hall. There were thirty-six couples in attendance.





## The OWL

# Aesthesian Literary Society

*Motto*—Be not satisfied with present attainments, for when growth ceases,  
decay has already begun.

*Colors*—Purple and Gold

*Flowers*—Purple Aster and Golden Rod



### OFFICERS

First Semester	Second Semester
Myrtle Lair . . . . . <i>President</i>	Corinne Garner
Lola McColloch . . . . . <i>Vice-President</i>	Lois McColloch
Florence Frakes . . . . . <i>Secretary</i>	Gladys Francis
Frances Miller . . . . . <i>Treasurer</i>	Maude Bauer
Goldie Diven . . . . . <i>Chaplain</i>	Jessie Miles
Marie Steele . . . . . <i>Chorister</i>	Lois Gould
Lois McColloch . . . . . <i>Pianist</i>	Mary Louise Arnold
Corinne Garner . . . . . <i>Council Representative</i>	Florence Frakes
Betty Slayton . . . . . } <i>Sergeants</i> {	Eva Mae Medsker
Leah Weidman . . . . . } . . . . . {	Dorothy Kellam
Thenis Welsh . . . . . } . . . . . {	Lois McColloch
Corinne Garner . . . . . } <i>Curators</i> {	Betty Slayton
Bernice Hopper . . . . . } . . . . . {	Margaret Wood

The Aesthesian Literary Society has been in existence since a short time after the college was founded. It was organized by Mrs. Proctor, wife of the president of the institution, in 1887. The play given at the Lawn Fete on the last night of the school year has become an annual occurrence.

Another progressive year for the Aesthesian Literary Society has come to an end. The new membership plan as presented by the Literary Council proved very successful. All literary contests were entered with more enthusiasm than ever before. The 14th annual banquet, which was held March 12th, was well attended and greatly enjoyed. We trust that this society may move steadily forward, ever remaining true to Missouri Wesleyan and its ideals.

## The OWL

# The Excelsior Literary Society

*Motto*—Suavior in Modo-Fortiter in re

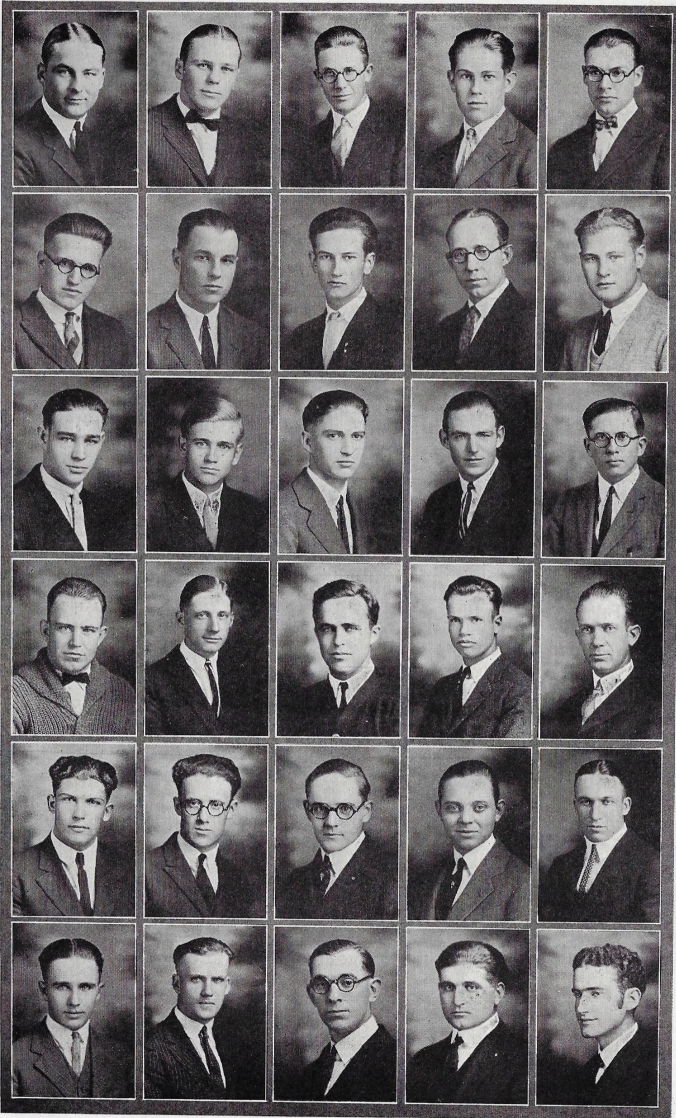
*Colors*—Pink and Green

*Flower*—Pink Carnation.

### OFFICERS

First Semester	Second Semester
Ralph McFarling . . . . . <i>President</i>	Harold Cokely
R. L. Henry . . . . . <i>Vice-President</i>	Eugene Wood
David Foster . . . . . <i>Secretary</i>	Paul Imes
Fred McKee . . . . . <i>Treasurer</i>	Fred McKee
James Shultz . . . . . <i>Attorney</i>	Victor Coy
Harold Cokely . . . . . <i>Sergeant</i>	Norman Fielder
Ralph Hicks . . . . . <i>Critic</i>	Ralph McFarling
B. A. Wagenknecht . . . . . <i>Chaplain</i>	R. L. Henry
Luther Swift . . . . . <i>Pianist</i>	Hadley Crawford
Levy Robinson . . . . . <i>Chorister</i>	Ralph Whipple
Victor Coy . . . . . <i>Yell Leader</i>	Everett Vanderslice
Floyd Pollock . . . . . }	Ralph Whipple
Ralph Whipple . . . . . }	Floyd Pollock
Eugene Wood . . . . . }	Dean Sauceman

1924-25 has proved to be another eventful and successful year in our history and we have contributed to a recognizable degree to every activity connected with Missouri Wesleyan. Early in the fall our maximum membership was reached, after which followed initiation and, since, a lively interest in the work of the society. Open programs, socials, banquets and literary advancement kept the members co-operating and busy, thus creating an abiding memory in each. It has always been our ambition to excel—that is, to ever follow those ideals which lead us out and beyond those of yesterday—to constantly have a goal to reach and pass, then another and yet another. It is with some degree of satisfaction that we review these months of 1924-25 and to survey the future, noting that there are yet many things we must accomplish.



Y. W. C. A.



First Semester	OFFICERS	Second Semester
Marion Huslizer . . . . .	<i>President</i> . . . . .	Helen Meyer
Corrine Garner . . . . .	<i>Vice-President</i> . . . . .	Goldie Diven
Lois McCollough . . . . .	<i>Secretary</i> . . . . .	Florence Frakes
Lola McCollough . . . . .	<i>Treasurer</i> . . . . .	Ruth Crawford

CHAIRMEN		
Goldie Diven . . . . .	<i>Devotional</i> . . . . .	Nadine Nichols
Myrtle Lair . . . . .	<i>Financial</i> . . . . .	Corrine Garner
Carol Meyer . . . . .	<i>Social</i> . . . . .	Ethel Nichols
Thelma Shonk . . . . .	<i>Mission</i> . . . . .	Jessie Miles
Nadine Nichols . . . . .	<i>Publicity</i> . . . . .	Floye Swan
Floye Swan . . . . .	<i>Chorister</i> . . . . .	Lois Gould
Stella Crockett . . . . .	<i>Pianist</i> . . . . .	Eula Stotts

The Y. W. C. A. played an active part in the life of M. W. C. girls during the year 1924-25. The regular weekly meetings of the organization were well attended. Some of these were devoted to the study of modern social and moral problems. Others were addressed by members of the faculty and by out of town visitors.

Early in the year a watermelon feed was given on the campus for the new girls. This was well attended and was thoroughly enjoyed by all.

Later the girls went on a hike and weiner roast to the Burlington reservoir.

The president of our sister college, Hua Nan of Foochow, China, visited the Y. W. C. A. and a special collection was taken for this college.

The "Y" sent two delegates to the Conference at Columbia and they brought back many valuable suggestions for the organization.

The sunrise prayer meeting with the Y. M. on Easter morning was a very beautiful service and will long be remembered.

The Y. W. adds something to the life of a college girl which cannot be added in any other way. Its purpose is to mean more each year to more girls.



# Y. M. C. A.



First Semester

- Virgil Lindsey . . . . . *President* . . . . .
- James Shultz . . . . . *Vice-President* . . . . .
- Charles Burgess . . . . . *Secretary* . . . . .
- Austin Simonds . . . . . *Treasurer* . . . . .
- Leo Lattin . . . . . *Devotional Chairman* . . . . .
- Fred McKee . . . . . *Sick Visitation* . . . . .
- Joseph Greenwood . . . . . *Pianist* . . . . .
- Ralph McFarling . . . . . *Chorister* . . . . .
- Levy Robinson . . . . . *Bible Study Chairman* . . . . .
- Ralph Whipple . . . . . *Gospel Team Chairman* . . . . .

Second Semester

- John Sheehy
- Paul Imes
- James Shultz
- Roy Schneider
- Norman Fielder
- Carroll Henderson
- Joseph Greenwood
- Joe Williams
- Ralph Whipple
- David Foster

The Y. M. C. A. has made a place for itself through the endeavors of the cabinet and the co-operation of the young men. Among its members are found persons interested in every activity of the school. The programs of 1924-25 have been made more interesting by discussion meetings, joint sessions with the Y. W. C. A., special music, and extraordinary speakers.

It is part of the Y. M. C. A.'s program to furnish Gospel Teams to surrounding towns where they gave programs and which we know to not only be interesting but beneficial to the citizenry. This furnishes a channel for expression of ideas gained by study and is very interesting work.

The Ministerial Association is a theoretical institution composed of students engaged, actively and otherwise, in the ministry, and of others who are preparing for some form of church work. Shortly after the opening of the first semester a meeting was held at the home of the faculty adviser, plans being laid, but never hatched, for future endeavor. R. L. Henry was elected president, Ralph McFarland vice-president, and Forest R. Brown secretary - treasurer, with the accent on secretary. One lone, feeble effort followed the first, and it is rumored that only the faculty adviser proved faithful. The physical half expired with this one gasp; the association became a spiritual alliance with a missing link (the spirituality). The passing school days revealed what proved to be consensus of opinion school work, church work drives and budgets, budgets and drives; meetings (annual, district, quarterly, special, important, na-



tional, county, state, international), chapel moral advice, books, letters, lectures, courses, Y. M., more morals with such splendid examples, do amply fill that aching void in embryo preachers' gizzards with what is known as Christianity. Taken in addition to the above everyday events, prayer meeting (so-called), what-nots and forget-me-nots, seem like an endorse of quinine, and the bitter taste populates the world with how-wows and such little time to live and study, and think. And so, gentle reader, while the mills of the godlets moved slowly the association has toyed with chance, lazily, like a puppy loosed on a spring morning to rejoice in his freedom, to take a breath of fresh air and say, "Where art Thou, oh Christ, that we may know Thee more?"

And perhaps the answer will come to restore again dreams that have been shattered, and the calmness of reason and the tolerance of true fellowship to draw us nearer to Christian manhood.



1925

[ 84 ]

## Pi Kappa Delta

Prof. B. W. Folsom entered upon the debate work with a determination to build up Wesleyan's reputation in debate and give the college the same place of prominence in forensics that she has enjoyed for some time in athletics. In this he was to a marked degree successful as the season's record shows.

About October 15, the Epsilon chapter was notified that the official Pi Kappa Delta question for the year would be, "Resolved, that Congress should be empowered to override decisions of the Supreme Court, declaring congressional actions unconstitutional." The debaters started to work on the question immediately.

The debate season opened with a forensic engagement with Kansas State Agricultural College. The Wesleyan girls' team, composed of Grace Holiday, Floye Swan and Nadine Nichols, lost to the Manhattan team here February 12.

March 6, Nadine Nichols and Grace Holiday won a unanimous decision from Des Moines University.

The opening debate for the boys' squad was with Baker University. Redman, Taylor and Moore constituted the negative, which won from Baker.

March 18, Crawford, Taylor and Moore supported the affirmative against Park College at Parkville, and lost a 2 to 1 decision.

Redman, Hulse and Moore met the College of Emporia March 30. The C. of E. won on the affirmative.

April 1, Ottawa University won from Wesleyan at Cameron by a 2 to 1 decision. Peters, Taylor and Moore represented Wesleyan in this debate.

The first Jewell debate was held in Cameron April 6. Jewell won. Crawford, Taylor and Moore debated, supporting the negative.

Taylor and Moore composed the Wesleyan team which defeated Central Wesleyan here April 8.

The Westminster debate here April 15 was a no-decision debate. Crawford, Taylor and Moore upheld the affirmative.

The final debate of the regular schedule resulted in a victory over our old rival, William Jewell. Our debaters were Peters, Taylor and Crawford.

The Epsilon Chapter at Missouri Wesleyan had representatives at the Provincial convention of the Central Western Province of Pi Kappa Delta, held at Canton, April 23 and 24. The Missouri Zeta Chapter at Culver-Stockton College was host to the delegates. All were royally entertained.

The Wesleyan team, consisting of Moore and Taylor, won its first debate of the convention from Simpson College. This placed Wesleyan in the semi-finals. After perhaps the most interesting debate of the convention, between William Jewell and Wesleyan, the judges gave their decision to Jewell.

In women's oratory, Nadine Nichols won second place.

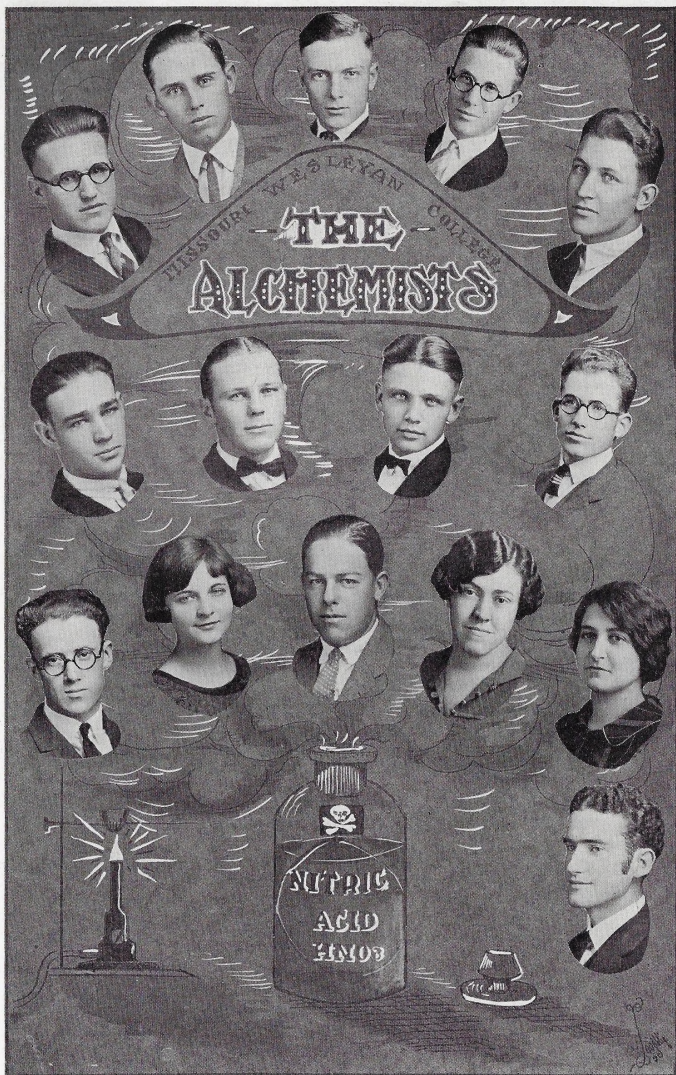
Paul Crawford won third in men's extemporaneous speaking.

Pi Kappa Delta and forensics are on the boom at Missouri Wesleyan. The Epsilon Chapter purposes to be even more active in promoting forensics next year. The following are the chapter officers: Wilbur Moore, president; Charles Taylor, vice-president; Paul Crawford, secretary and treasurer.

Much of this season's success is due to the untiring efforts of Prof. Folsom, and to the hearty support of the college.

1925

[ 85 ]



## The Alchemists Club

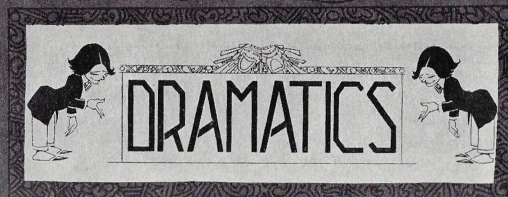
The officers for this year are:

<i>President</i> . . . . .	Walter Swift
<i>Vice-President</i> . . . . .	Thomas Jones
<i>Secretary</i> . . . . .	Myrtle Lair
<i>Treasurer</i> . . . . .	Nila Ganfield
<i>Faculty Reviewer</i> . . . . .	Prof. Wyckoff
<i>Curators</i> . . . . .	Harold Bangs, Marion McNarrie

The "Alchemists" is a new organization at Wesleyan and the interest manifested resulted in Wesleyan receiving a charter from the Theta Chi Delta, national honorary fraternity for chemistry students. Several members of the Alchemist Club belong to the fraternity. The purpose of this club is to attain a more thorough study of chemistry and a fuller appreciation of its value.

At the regular bi-monthly meetings profitable major and minor papers and current events were given on various phases of chemistry and its practical application.

The "Alchemists" owes its origin and advancement to Prof. Wyckoff. It insures a greater future for chemistry students at Wesleyan than has ever before been possible.



## The Dramatic Club

### OFFICERS

First Semester		Second Semester
Eugene Wood . . . . .	<i>President</i> . . . . .	Irene Moon
Maud Bauer . . . . .	<i>Secretary and Treasurer</i> . . . . .	Ruth Pittman

Although this was the first year for this club, they have given many successful plays. The most outstanding one was "Daddy Long Legs."

The club meets every two weeks, and a play is given under the direction of a member of the club. This has proved a very successful training to give expression of human interests.

### MEMBERS.

Jessie Miles	Bettie Slayton	Lorin Thornton
Ruth Pittman	Mildred Morrison	Frank Slayton
Irene Moon	Elizabeth Moorshead	Maude Bauer
Pearl Shultz	Norman Fielder	Pearl Daniel
Helen Meyer	Leon Fleenor	Angela Taylor
Goldie Diven	Bazzell Foxworthy	Vera Herring
Mildred Robison	Frank Klein	Gladys Penny
Lou Gene Evans	E. Wood	Ruth Potter
Margaret Wood	Goldie Bourrett	May Cash
Dorothy Jones	J. W. Biggerstaff	Pauline Davis
Nannie Simpson	Virgil Lindsey	Nadine Nichols
Fern Bayse	Wallace Theilmann	Floy Swan
Grace Holliday	John Sheehy	Prof. Folsom
Bernice Hopper	Wilbur Moore	Grace Henderson

# Black and Red Peppers

Motto—Frivolity Reigns  
Colors—Black and Maroon

Wilbur Moore . . . . . *President*  
Jay Tomlin . . . . . *Secretary*

- |                           |                                   |
|---------------------------|-----------------------------------|
| Bowman, John A. (Doc)     | Moon, Maurice (Senator)           |
| Brown, Cleo (Cleopatra)   | McFarling, Ralph (Rev.)           |
| Byers, Evert (Cochran)    | Moore, Wilbur (Wilb)              |
| Connell, Louis (Speed)    | O'Neal, William (Mike)            |
| Fielder, Norman (Munn)    | Simonds, Austin (Aus)             |
| Filley, Lynn (Finn)       | Swift, Luther (Brick)             |
| Fleenor, Leon (Flea)      | Swift, Walter (Walt)              |
| Foxworthy, Bazzell (Foxy) | Taylor, Charles (Sastre)          |
| Greenwood, Joseph (Joe)   | Thielman, Giles (Sheik's Brother) |
| Jones, Robert (Red)       | Tomlin, Jay (Ruth)                |
| Jones, Waldron (Nelly)    | Reed, George (Blondie)            |
| Klein, Frank (Klenzo)     | Welsh, Russell (General)          |
| Lindsey, Virgil (Virg)    |                                   |

Ralph Hicks, as yell leader, with some fellow conspirators joined together in solemn conclave, decided to initiate an organization to more efficiently arouse enthusiasm at the various athletic contests. Said enthusiasm was to be aroused by subtle and entrancing maneuvers and vocalizations.

Wilbur Moore was elected president at the first meeting. Jay Tomlin was elected secretary. Cochran, Red and Klenzo were selected to act as a stunt committee.

At every home game, between the halves, the club in full regalia marched to the field and by graceful and varied manipulations inspired a rebirth of enthusiasm and confidence.

We hope the club will realize the cherished dreams of its original founders and constituents and continue to function until we shall all dwell in the Utopia—when every team wins every game in every contest.

# M. W. C. Ladies' Quartette



This quartette is one of the best advertisements that Wesleyan has and one of the liveliest musical organizations that has represented the college.

The quartette sang many times each month. Their listeners include all the Cameron churches, the commercial club, Chillicothe, St. Joseph and various other towns.

Members of the quartette are: Lou Gene Evans, lyric soprano. This is her third year in the musical department and has taken special work in Kansas City.

Mildred Robison, mezzo-soprano. Mildred has been a leading member of the glee club and quartette for three years. She has also taken major parts in the annual operas.

Marion Hulsizer, first alto. Marion has been with the glee club for three seasons and is one of the most talented singers on the club and quartette.

Gladys Frances, contralto, has been at Wesleyan only two terms but always occupies one of the foremost parts in the musical organizations because of her pleasing voice.



## Ladies' Glee Club

- President* . . . . . Mildred Robison
- Secretary* . . . . . Marian Hulsizer
- Librarian* . . . . . Lois Gould
- Assistant Librarian* . . . . . Gladys Francis
- Business Manager* . . . . . Eva Crawford
- Director* . . . . . Esma Sommerville Slayton
- Pianist* . . . . . Lenore DuBois

The Ladies' Glee Club of 1925 was one of the best clubs that has ever been produced at M. W. C. The concerts which the club gave consisted of music of the highest class. Several short trips were made during the year to neighboring towns where the work of the girls was highly appreciated. The girls were under the excellent direction of Mrs. Slayton, whose ability as a director was manifested by the appreciation rendered the club by the many audiences before which it appeared. A ten-day trip was made through northwest Missouri. The towns visited were: Amity, King City, Bethany, Ridgeway, Eagleville, Grant City, Maryville, Skidmore, Maitland, and at the White Temple of St. Joseph. The club was also a guest of the Commercial Club of St. Joseph at a luncheon given at the Robideaux Hotel.

In all its appearances the club has ably represented M. W. C.

First Soprano

- Lou Gene Evans
- Marian Conklin
- Lois Allen
- Lois Gould

Second Soprano

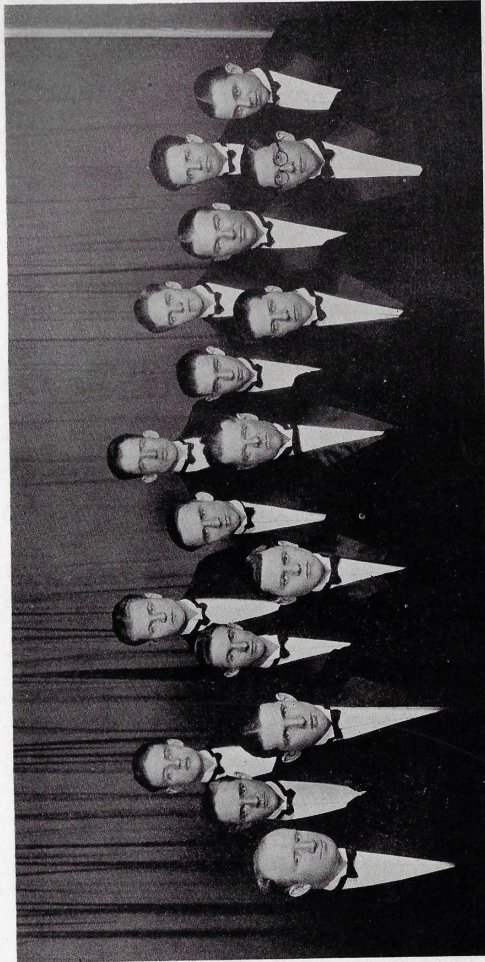
- Nila Ganfield
- Mildred Robison
- Eula Miller
- Marie Steele

First Alto

- Marian Hulsizer
- Thelma Gross
- Betty Slayton
- Nellie Foster

Second Alto

- Eva Crawford
- Gladys Francis
- Margaret Wood
- Pearl Shultz
- Violet Fairchild



*Top Row*—Frank Klein, Baritone; George Reed, Baritone; Walter Swift, Second Tenor; Joe Greenwood, Second Tenor; Rex Orr, First Tenor.

*Middle Row*—Edward Kagay, First Tenor; Charles Groom, First Tenor; Levy Robinson, Bass; Paul Ines, Bass; Ralph Whipple, Baritone; Floyd Pollock, Second Tenor.

*Bottom Row*—Charles Shaffner, First Tenor; Lynn Filley, Second Tenor; Joe Williams, Baritone; Dean H. C. Kelsey, Director; Bazzell Foxworthy, Bass; Ralph McFarling, Bass.

## Wesleyan Glee Club



Joe Williams . . . . . *President*  
 Charles Shaffner . . . . . *Secretary*  
 Bazzell Foxworthy . . . . . *Librarian*  
 Rex Orr . . . . . *Manager*

At the first call for volunteers for the Glee Club some forty men answered the call. At first there was considerable gloom in camp, due to the fact that several of the best singers graduated or failed to return to school. But before long the Club, under the very able direction of Dean Herbert C. Kelsey, began to take on form and was finally molded into one of the best clubs ever turned out by Missouri Wesleyan.

On November 20th the Club gave its first concert of the season in the little village of Stewartsville; thus started the season. Several concerts were given before the annual spring tour, which started on March 20th and included the following towns: Mercer, Trenton, Unionville, Ravanna, Spickard, Princeton, Milan, Wyaconda, Brookfield, Marceline, Carrollton and Chillicothe.

On March 31 the Club gave its sixth annual concert in Cameron to an audience of eight hundred people, the second largest crowd ever to hear a Missouri Wesleyan Glee Club.

At the close of the season the Club presented Dean Kelsey with a fancy gold watch in appreciation of what he has done for the clubs at Wesleyan. The Club was very ably assisted by Miss Goldie Diven, reader for the Club for the second year, Miss Neva Garner, artist, pianist and violinist, Joseph A. Greenwood, Wesleyan's boy pianist and cornetist, and Joe Williams, Wesleyan's favorite baritone.



# The Criterion Staff

## EDITORIAL STAFF

- Faculty Advisor* . . . . . Leone Chappell Reed
- Editor-in-Chief* . . . . . John A. Clark
- Associate Editor* . . . . . Thelma Gross
- Business Manager* . . . . . Wilbur Moore
- Advertising Manager* . . . . . Wallace Theilmann
- Assistant Advertising Manager* . . . . . Ralph Whipple
- Circulation Manager* . . . . . Lola McCulloch
- Assistant Circulation Manager* . . . . . Mildred England
- Sports Editor* . . . . . Evert E. Byers
- Locals and Alumni* . . . . . Nadine Nichols
- Exchange* . . . . . Goldie Diven
- Y. W. C. A.* . . . . . Marion Hulsizer
- Y. M. C. A.* . . . . . Ralph McFarling
- Ruthean* . . . . . Marion Conklin
- Aesthesian* . . . . . Themis Welsh
- Adelphian* . . . . . Billie Gilchrist
- Excelsior* . . . . . Virgil Lindsey

Ninety per cent of our reading is from the newspapers, and a greater part of the newspaper work taken in by the Wesleyan students is the Criterion.

The aforesaid paper is a bi-weekly production of journalistic genius. Many students study the articles several times because it contains something about themselves while others hurl a new copy to the ground as they sense a subtle one that has been pulled on them.

Mrs. Reed deserves the majority of the credit for the Criterion this year. She spent most of her spare time hunting staff members to assign them articles because when the work is late the members are hard to find.

John Clark has proved himself to be one of the best editors that the college has had. His editorial page was always a headliner and his columns on "Mostly Jokes" or "Market Reports" were as clever as College Humor material.

The Staff has tried hard to present to the students a worthwhile paper this term and trust that you have taken all the personal remarks as nothing serious and will aid in supporting a bigger publication next year.





### First Prize Poem

Prize of Ten Dollars in Books Awarded by College Board

#### WHEN DAY IS OVER

When day is over, and the night  
 Descends on quiet wings,  
 And in my house the candlelight  
 Is fluttering as it springs  
 Against the farthest wall of black,  
 In brave endeavor vain  
 To drive the fearsome darkness back,  
 And make it light again.

Then I bring into my dim room  
 A light—I touch the wall—  
 And through the disappearing gloom  
 I hear my old friends call,  
 And I draw up my easy chair,  
 I choose a book or two,  
 I call my friends to banish care,  
 And roam the whole world through.

—Corrine Garner.

## The Critic

First Prize Short Story

Her piquant little face shadowed by a scowl, she flounced out of the room. "You aren't fair at all," she flung over her shoulder, and banged the library door behind her.

Marsden leaned back in his chair, his eyes on the sheets of closely written paper before him, and smiled. Lalla was so positive; so much in earnest. What did she know about literature anyway? To be sure, though, she usually did choose the best. Well, if she really did think "Gray Twilight" was a masterpiece—he smiled. Nevertheless he would continue his scorching criticism of it. And his pen was again racing over the paper, vainly endeavoring to keep pace with his flying thoughts. He wrote until the shadows across the fading light obscured his paper. Then he arose and hurried out on the cool porch to await the call to dinner.

"Say, old man," boomed a voice from the dusky recesses of the porch swing. "Lalla tells me you've been writing another of those criticisms on 'Gray Twilight.' Now don't take me for an interfering upstart; I'm not trying to butt in, but I wonder if you couldn't be a little less fiery. The book is pretty good, you know, better than the average."

"You mean to say that I, Oliver Marsden, literary critic of 'Books and Bookmen,' author of three novels and four plays, know less about the merits of a novel than you, Ben Jordan, Harvard Junior?" Marsden questioned acidly.

"No, I don't mean that, Marsden, I really don't. You know I admire your position and respect your judgment—" Jordan began hastily, coming toward the other.

"Well, then, what's all the rumpus?" demanded Marsden, seating himself on the top step.

"Hang it all, Marsden, you see it's like this. Lalla showed me those criticisms, and, well, they are peppery. If it were anyone else but you, I'd think you were jealous of the praise the author is getting. Now, 'Sir Cecil' is obviously a non-de-plume, and I—Well, I don't know as it was any of my business, but, well, Lalla seemed so worried, and I—well, I went to the publishers—"

"You what?" demanded Marsden, jumping to his feet. "You went to Graham's, and then what? Go on, man."

"Well, I will if you'll give me half a chance," he said testily. "I asked Graham if he could tell me who the author was, and he said that it would be published in the Sunday 'Tribune,' but he couldn't tell before. But he did say that the book was written by a man who was well thought of by the reading public and who had a rather biting pen if he wished to use it."

"All very interesting, no doubt, but I can see no reason for telling me all this. I surmised as much when the book came out," returned Marsden calmly.

"Oh, of course, you could surmise anything," the other replied sarcastically. "But see here," he continued earnestly, "Do you also surmise how the author will use his pen when he reads all this stuff—er—criticism you've written? Like as not he's already writing some rather hot remarks about your novels."

"I don't doubt that for a moment, my dear sir," replied Marsden with a smile. "In fact, I know he's doing that very thing."

"Then you know who the author is?" cried the other in astonishment. "Did you ever read his earlier novels? Are they good?"

"Yes, I've read a few of them. They are so-so, not altogether bad but not masterpieces," Marsden answered indifferently.

The call to dinner prevented the continuance of their discussion. After dinner Marsden was strolling down one of the garden paths when he was aware of footsteps. A girlish form in white stole up to him and laid her hand on his arm.

"Forget my hasty words, Oliver," she begged. "I didn't mean to talk so to you, but I do want you to be careful, dear. You know, when I am your wife, I don't want you to be attacked in the papers by an angry old novelist calling you all sorts of names. And anyway, dear, I do think 'Gray Twilight' is a good book, and I would be proud to marry a man who could write one as good," she added recklessly.

"Why, Lalla," he said in a stern voice. "So you think 'Gray Twilight' is better than anything I ever wrote?"

"No-o-o, not than one of your plays. But I do think you've never written a novel that equalled it. But of course, you could and will, too, after we're married," she smiled up at him.

"Well, after we're married," he echoed. "On Sunday, I'll begin my masterpiece. But, my dear, why have you been making that precious brother of yours worry his poor head nearly off trying to find out the author?"

"Ben? Oh, I didn't and he isn't, Oliver. But he wants me to be happy, and I can't be if some mean old author writes ugly things about you and we see them on our honeymoon," she replied dismally.

"Well, my dear, you need not read them, and it won't hurt me. I'm used to it," he comforted her, and turned the talk to happier things.

Sunday afternoon, after a quiet, reverent little ceremony, Marsden and Lalla hurried to the train and found themselves alone in their compartment. After they left the station behind them, Marsden excused himself for a minute, and went out, leaving Lalla alone, happy, but with a strange little feeling in her heart. In a moment Marsden returned with the Sunday paper.

"Oh, Oliver, I suppose the paper tells who the author is. I do so want to know who it is," she cried.

"Yes, here it is."

Lalla took the paper, turned to the paragraph her husband pointed out, and gasped. For this is what she read:

"Graham and Davis, Publishers, announce that 'Sir Cecil,' author of the brilliant 'Gray Twilight,' is in reality the celebrated novelist and dramatist, Oliver

Marsden. Mr. Marsden is also a deft and brilliant wielder of the critic's pen, as those who have read his criticisms of his own masterpiece, 'Gray Twilight,' will realize. Mr. Marsden wrote these criticisms as experiment in journalism to determine if it were possible for an author to criticise his own work severely and honestly. While he has expressed himself in rather biting terms about his novel, yet the mistakes which he sees and the discrepancies which he points out are, other critics agree, to be found to some extent in the novel, but without preventing its being in the first rank of literary work. And although Mr. Marsden has been unnecessarily severe with himself, we admire him for acknowledging his own mistakes."

"Why, Oliver, why did you keep it a secret from me?"

"It was to be your wedding present, dear. I hope you like it. You said you would marry the man who wrote it."

"And I did, I did," she whispered, smiling up at him.

—Corrinne Garner.

## The Real Captain

Second Prize Short Story

A dark, gloomy December night, and the U. S. American, one of the pride-ships of America, was not far from home or Christmas. In the black night lurked the omnipotent shadow of disaster or coming tragedy—the eerie, weird moan of the wind as it hovered about the deck mocking the seamen with shrill, piercing shrieks like impish laughter; the ominous glare of the moon from behind those witch-like clouds which teased our luminous friend with an occasional peep at the ship.

Captain, the monstrous black cat who lived on the ship, felt the same presentiment, a hidden danger. Through the witchy night he paced wildly and manely up and down the deck sniffing the air, a mysterious omen, his powerful tail switching back and forth like a Westerner snapping a rawhide whip. Suddenly, his intuition concerning the inauspicious was rewarded. Stopping on one of his feral rants about the deck to smell the air again, his sensitive nose detected a queer odor in the atmosphere; gas arising from a smouldering fire below deck had been wafted to him. Captain Jerry, almost human, immediately thought of the crew—they must be warned!

"That crazy cat," laughed Captain Dill, picking Captain Jerry up gently and putting him out of his cabin for about the fifth time that night. "He's kept everybody up tonight with his howling, and now he jumps on top of my bed and just about tears the covers to pieces."

Captain Dill didn't notice that plaintive look in Captain's eyes or that warning note to his beseeching "Meow!" He was soon to regret it.

"What's the matter with that cat?" yelled sailor Tom, hearing Captain outside his cabin scratching on the door and howling pitifully; but, like all the rest, he didn't get up to see.

Captain Jerry rushed from door to door. Couldn't they understand that their lives were in danger? By now the devilish wind had whipped the smouldering fire into a leaping, raving demon. Jerry raced back to the Captain's cabin again; his howl of distress finally brought Captain Dill to the door. Jerry, seeing his beloved master start to pick him up, raced down the deck a short distance, turned, and let out a lugubrious "ME-OW" that sounded like "come on."

"What the—sam hill?" muttered Captain Dill, starting after Jerry.

He hadn't followed far before he noticed the gnawing, hungry flame that was just breaking through the upper deck. Why couldn't they have understood

Jerry's warning? Didn't he arouse them once before when a leak threatened to become dangerous? That's where he was surnamed "Captain."

The crew was immediately aroused, but they hadn't heeded Captain's call soon enough; the life boats had to be lowered. Captain Dill was the last to push off from the burning ship, the ship he had learned to love like a child. The flames would not permit him to remain a minute longer. A short distance out on the water he turned for one last look at his lost ship.

"My God! Tom, Jim—LOOK!" Captain Dill pointed his shaking hand toward the tall, flaming mast of the late U. S. American. There, silhouetted against the blood-red sky clung the beloved "Captain." Captain Jerry, who had saved their lives—and in turn had been left aboard to die. Never did men feel so ungrateful; they could watch no longer.

"ME-OW! ME-OW!" A wail of distress, a cry of unjustness arising above the sound of crackling flames and falling timbers carried far across the shiny water. A wail such as no human had ever heard; nor would again. The sad cry ended in one low, mournful sob that was almost human. Tears welled up in the eyes of all. They had left a friend behind.

Captain Dill epitomized the sad situation with, "We let Jerry die with the ship; he was the REAL CAPTAIN after all."

—Sidney S. Brown.



WHAT DO YOU THINK OF THIS IDEA?

Most of our College trade want a really fine suit. None of it wants to pay any more than is represented by solid value. We figured that the thing to do was to concentrate. Get together a wonderful assortment of suits absolutely right in every particular, bought close, marked close, not too high priced. That's what we have done for Spring. Fifty dollars is the price. You get an awful lot for that, in these Society Brand College Clothes.

C. N. STUCKER & CO.  
Cash Clothier

A letter from Papa to his little girl in college:

My dear little girl. Father doesn't want to be captious but aren't you hitting things "Sky High" down at Missouri Wesleyan? Of course, You know that I want you to get a "Liberal Education" and sent you for that purpose; but I never dreamed that you were going to buy the college! Mother and I have been thinking it over lately and decided that it might be more accordant with the situation for me to take over your allowance and let you have my income—that might work—there isn't even going to be any income though at the present rate of speed. From the results of inquiries that I made before I sent you to Wesleyan I thought I was sending you to a quiet, peaceful little school where one could go and, among other things that are more important, get an education; but it seems, according to your requesting letters, that they have a party or a Society banquet every night of the week—quite a social-crazed college. Glancing over a mere trifle that you so aptly termed "miscellaneous" containing as you said, little things like French makes of powder, rouge, perfume, etc.; I was unable to decide whether you had seven or eight girl friends living with you, or whether you was in the habit of receiving weekly shipments of such necessary supplies direct from France. I presume that the latter is correct. A fleeting view of the item Stationery convinces me you must have hired a private Secretary too, if not, I am at a loss to understand how you find time for all your correspondence and have time enough left to study too. Your interesting account on Shoes informs me that you do much traveling over the old and rocky trails of Mountains, yet, I was of the opinion that the Ozarks were down in the southern part of Missouri—of course I might be wrong. One thing is certain, and this is no hallucinationary idea of mine—Cameron is sure rough on Shoes; you use enough to supply the American Army! You spoke at some length concerning "Dates" under which list was Flowers, Candies, etc. In my day the boy usually got such things and paid for the drinks, etc., but times change I suppose—it doesn't change near so fast though as "CHANGE" does! I was considering letting you have a little car this year, but as yet I haven't been able to buy any oil or gas wells cheap. I was at home when I received your letter so I was deprived of the use of my adding machine and didn't get time to add up your figures. This explains why I'm enclosing a blank check with just my name signed to it, and when you are kind enough to fill in the amount that you need remember that Mother and I don't want to mortgage our little house, somehow we've taken a liking to the place and want to live here for awhile. Well, good bye my little Eula, study hard "to show thyself approved," your loving Father.

### HIGHWAY CAFE

Blue Room  
 For Private Parties  
 Dining Room  
 College Students Always Welcome  
 OPEN ALL NIGHT  
 GEORGE ZANKER, Prop.

CROSLY  
 RADIO AND SETS  
 DAY-FAN  
 Complete Line of Parts and  
 Batteries  
**Cameron Radio Co.**  
 Telephone 105  
 WILFRED JAMES, Prop.

### Dr. E. D. Kimes

Dentist  
 Mutual Insurance Bldg.  
 PHONES  
 Office 73                      Residence 812

### C. Everett Ford

for  
 HARDWARE, CULTERY, ETC.  
 Our Aim is Good Goods at  
 Low Prices  
 Uhl Bldg.

### The Cameron Trust Company

Capital, \$100,000.00  
 Surplus, \$100,000.00  
 Total Resources Over \$1,000,000.00

Large enough to meet all your needs; small enough to give you Individual Service.

The Cameron Trust Company  
 for greater Service and Protection.

### Maxwell & Maxwell

Chiropractors

CAMERON, MO  
 HAMILTON, MO.

Some narrow minded, misguided, short sighted religion jammer egotists have the misconceived idea that all the people in the U. S. can be divided into Fundamentalists and Modernists; a spirit could draw a line dividing the two into separate groups. This conception is about as practical as keeping Jack Dempsey out of the army because of physical defects.

Red Welsh: "Miss Lippelt, did Prof. Withington say that 'Tess of the Storm Country' was 'D. W. Driffizz's must finmus pwtcher'?"

La Buena: "Misher Welsh! Hand in your woibs, please!"

(KIND-WORD-PUZZLES)

Lois Neil was making a prodigious effort to construct a cross word puzzle, but she was somewhat discomfited with the throes of aphasia. In other words, she couldn't think of a word. Suddenly she espied Dorothy Wilson loitering near.

"Dorothy, tell me a word to put in this puzzle."

"One," was the prompt reply.

"N-a-w, a bigger one."

"Well, hundred, then."

"Did you just come from Red Jones' class? Your mind runs on numlbers. Give me another word."

"Well—cat. How's that?" laughed Dorothy.

"A bigger one, a bigger one!" yelled Lois, waxing angry.

"TOM CAT!"

3 ACT PLAY  
(Comedy)

Act One—Willie Belle Walters and John A. Bowman!

Act Two—Willie Belle receives "Gold Football" from Toad Parks!

Act Three—Willie Belle Walters and Toad Parks!

In which is related a dolorous, lugubrious experience concerning travels. You've already guessed that it is going to be a sad affliction. The same happened in Prof. Taylor's class of Roman History. True asked Binum Elston the name of Hannibal's father. No answer. (Of course you know it's Hamilcar.) "Well," said True, "what do section hands ride on?" "Hand cars." "All right. Car. And what's the name of that town just southeast of Kidder or straight east of here?" (Of course you know it's Hamilton.) True was trying to get him to put the Hamil and the Car together and thereby get Hamilcar. The answer he received was, "I—don't know—I never was down that far." You will agree that this was a sad account—concerning TRAVEL!

All the News  
Of Town and College is Printed  
in  
The Cameron Sun  
"It Shines In Every Home"  
Job Printing, Too

G. F. Roberts  
For Clothing and Gents'  
Furnishings  
Suits Made to Measure  
You are Invited  
East Third      Cameron, Mo.

THE BLUE  
LANTERN

Meals  
Short Orders  
Candies  
Fountain Service

A Place of Individuality  
Private Supper Parties a Specialty  
Opposite Campus      Phone 96

Only One Bread—That's Taylor's  
Why do Ninety Per Cent  
of the People of Cameron  
Eat Taylor's Bread?  
Because It's the Best!

TAYLOR'S  
BAKE SHOP

Breads, Pies, Cakes  
Baked Fresh Every Day  
Only One Bread—That's Taylor's

A student of Prof. Null's, mystified by the speed of light (186,000 miles a second), figured it out on paper that if Sammy Bauer should start from in front of the college and travel towards Rice Hall at the rate of two hundred miles an hour in one of his cars, and Friede Whillhoit should start around the world on his bicycle at the rate of the speed of light, Friede would pass Sammy seven times before he could get to Rice Hall.

The Spanish team, under the guidance and instruction of Coach La Buena Lippelt, was sadly demoralized this year by the loss of five Letter Men: "Sleuth" Paul Brown, "Red" Jones, "Cochran" Byers, "Sid" Brown, and Frank Klein. Capt. Red Welsh was the only man of last year's famous team that returned; Capt.-elect Hulse, though, is beginning to show form and promises well. Last year's team was constantly heard of all over the building, especially the noble work of Frank Klein on one of his long runs out of the room. Physician of the team, Dean Dalke, gave splendid co-operation in keeping the team together; many were the men he revived and sent back for further work under the coach. Without his splendid help the team would probably have disintegrated last year. Senor Rojo (Red Jones) would undoubtedly have been the outstanding star of the season last year if he had just had wind enough to stay in the game; as it was, he usually had to leave after the first five minutes and be put under the care of Physician Dalke. Senor Klenso (Frank Klein) and Senor Moreno (Sidney Brown) alternated at calling the signals, the team working equally well under each; the only difference being the difficulty of concealing Senor Klenso's plan of attack from the opponents; Klenso, though handicapped as he was on account of this, played a stellar game, and is to be admired for his "stick-to-itiveness." Capt. Welsh of this year put forth an egregious effort to resuscitate the "Glory and the Grandeur" of last year's team, and was constantly assisted in consul by the letter men of that championship aggregation; but it was all in vain. They lacked that snap and punch that make champions. The plan of attack was slightly different too. Last year's team gained their fame in the concentrated attack, something like ancient Rome's wedge formation, all the men acting as one unit. On account of the loss of so many and valuable letter men, Capt. Welsh had to change the mode of attack to slight thrusts and sallies coming from unexpected quarters, the idea being to gain headway by speed and surprise. The diversified attacks lacked the needed force necessary to cripple the enemy, though, and the team suffered therefrom.

Our idea of a misconceived notion is Bill McCullough and Kenneth Hepler thinking that they should get "B" in French.

A. H. GEHA



DEPARTMENT STORE

WELCOME, WESLEYAN STUDENTS!

We Have Everything You Might Want—  
Clothes, Shoes, Novelties, and So Forth

Come, Get Acquainted With Us!

WILFREDA PIXLEE

Makes Keen Clothes

## Results of Detective Work

BY  
SLEUTH PAUL BROWN

"I have eventually determined, by the finger print method, that Eugene Wood is the homo who stole the January issue of The Ladies' Home Journal from the library. And who would imagine that Corrine Garner lies abed into the late hours of night reading such literature as Snappy Stories? Months of extensive work with my ultra-powerful magnifying glass has uncovered a plot on the part of June Clark, Chester Mansfield and Levy Robinson to grow a moustache! Intensive study in spiritualism convinces me that John Kenneth Hepler will one day become tongue-tied or subject to the throes of stuttering; as I see it now, that day will be when he falls in love! In my long, tedious months of sleuthing, always counselled by my Correspondent Course. I have included also, in my shadow work, certain members of the College Faculty. Miss Gertrude Lippelt, for instance, has a prodigious propensity for playing POKER; Miss Herring usually goes in partnership with her and together they relieve their lady friends of all surplus money. Prof. Withington takes Correspondent Courses in Clear Speaking and Oratory.—My greatest discovery, though, is Dr. Buck's extreme Mania for 'LOOKING GLASSES,' especially those with convex form that make one appear so much larger than they really are.—Well, I must stop and put more study on my vocation; I have yet to shadow Willie Belle Walters—"

We are wondering how many of the college boys that wear these lumbermen's shirts would know an oak tree if it fell on them?

The significant feature of an American banquet is the dry toast.

Adah tells us that the modern flapper is more to be petted than censured—we knew that all along.

Dr. Reed asked one of his Freshman students in Psychology where his mind was. The boy thought it was in his brain. Imagine it! Another got the mistaken idea that his mind must be in his head. That was clever. None conceived the idea that mind was where thought was—and some of their thoughts at that time probably didn't do justice to their minds.

According to a Boston newspaper, the cross word puzzle had its origin in ancient Egypt. This is probably the reason that the Israelites were so anxious to flee into the wilderness!

Nila Ganfield: "I'd like to go for a long holiday where I'd be entirely cut off from the world."

Waldron Jones: "Why not try a telephone booth?"



Copyright 1924 The House of Kuppenheimer

Hole Proof Hosiery for Men and Women  
Bradley Sweaters for Men and Women  
Ide Shirts and Collars  
Cooper's Underwear  
Mallory Hats  
Collegian Clothes.  
Kuppenheimer Clothes

Dillener Clothing Company  
CAMERON, MISSOURI

Being located in the same town as the Missouri Wesleyan College, we are naturally interested in the welfare of the College and wish to give it our full co-operation, and under these conditions we wish to ask the patronage and co-operation of the entire Faculty and Student Body.

*Cameron Steam  
Laundry*  
Cameron, Mo.

WILLARD BATTERIES  
They Have More Punch

*McAddo Battery  
Service*

J. H. McADOO, Prop.

213 E. Third Phone 320

WE STRIVE TO PLEASE  
Call and See Us

*W. A. WRIGHT*  
BARBER SHOP

E. Third St. Cameron



Note: Ye Joke Editor, to obviate misapprehension, wishes to declare—"That a joke is a naive, delectable pleasantry concocted spontaneously for the enjoyment of its listeners or readers; exotic to any malice on the part of the originator or directed towards the personal failings or feelings of its victims.

CAN YOU IMAGINE

- Frank Klein in a one-piece bathing suit?
Paul Brown as Sherlock Holmes?
Hepler doing justice to French?
Bill McCullough in love?
Red Jones in the Salvation Army?
Allan Searcy singing grand opera?
Leon Fleanor fishing for whale?
Sammy Bauer wearing a monocle?
Nate Simms as a jockey?
Eddie Kurz GRADUATING?

1 ACT PLAY (Tragedy)

Scene: Chapel. Dean Dalke reading some announcements.
Time: 10:15 a. m.
Dean: "The Rutheans will sell sandwiches after chapel; let's have the march."
Nate Simms (falling back into his seat): "And I'm BROKE!"
The second semester of this year Billy Gilchrist took ten hours of work under two different teachers at the same hour—another instance of Dr. Jekyll and Mr. Hyde.

Charley Schafner led the students again this year in some of the old songs that had slipped our minds; a number of students that people delight in calling "LIBERALISTS" were later heard to suggest that "It would have been very congruous to have sung "Way Out West in Kansas" and "I Love Me." Maybe so. It began to look for awhile, too, that "Where Is My Wandering Boy" and "Why Has Sally Gone Away?" might accord with the volatile state of affairs that existed and "had their being" for awhile. SELAH!

David Harum agrees that a certain amount of fleas are good for a dog—they make him forget that he is a Dog; surely this exonerates HUMANS afflicted in like manner—but it doesn't make them feel any better.

Our rustic friend says that his wife is so contrary and obstinate that if he threw her into the river he would expect to find her somewhere UPSTREAM!

These Red Ties may be appropriate in Missouri, but down in Mexico they have BULLS that demand the use of discretion.

Whitman Box Candy

Fancy Bulk Candy

FAIR SEX CANDY SHOP

COLLARD BROS., Prop.

Phone 409 FOR SPORT RESULTS

Drinks that Satisfy

Quick Service

H. F. PITTS

Drugs and Books Fine Stationery and Toilet Articles

Conklin Pens and Pencils Johnson's Chocolates We Especially Feature Our Own Medicinal Preparations

104 E. Third St. Cameron, Mo.

Floor Coverings

Window Shades and Wall Paper Picture Framing a Specialty

FRY & TODD

W. H. KIMES

Hardware and Furniture Home of Devco Paints and Minolack Varnish

Phone 87

MARY MUNSON

MILLINERY and ART GOODS

103 W. Third St.

TRUE LOVE

Last night I held a hand in mine,  
So pink and small and fine,  
I swear I've never held before  
A fairer hand in mine.

It brought forth visions of delight,  
It made my heart beat fast;  
My heart turned light within my breast,  
My dream came true at last.

I pressed it to my burning lips,  
I kissed all five pink-white parts,  
Of that dear hand I held last night,  
That Royal Flush of Hearts!

A MODERN ROMANCE

Information, speculation, fluctuation, ruination,  
Dissipation, degradation, reformation or starvation,  
Application, situation, occupation, restoration,  
Concentration, enervation, nerve prostration, a vacation.  
Destination, country station, nice location, recreation,  
Exploration, observation, fascination, a flirtation,  
Trepidation, hesitation, conversation, simulation,  
Invitation, acclimation, sequestration, cold libation.  
Stimulation, animation, inspiration, new potation.  
Demonstration, agitation, circulation, exclamation.  
Enamoration, acceptance, much elation, hallucination.  
Interrogation, castigation, separation, emancipation.



"To err is human," but many a guy  
gets slapped in the face just the same.

Where there's a still, there's a sway.

Said the Listerine bottle to the onion,  
"O breath, where is thy sting?"

"Where are you from, Mister?"  
"From Providence, are I, sir."

Down by the old mill Joe tried to  
kiss Marion but she said she wouldn't  
kiss him by a dam site.

Ruby—"Is he very dumb?"  
Phoebe—"Is he? He believed me  
when I said, 'I'm not that kind of a  
girl!'"

"You may go as far as you like,"  
she said softly. So Moore took her for  
a ride on top of the bus, and they went  
to the end of the line and back.

Sammy says, "A stitch in time may  
save many from going blind."

Hootman: "Gee! I sure have got a  
sore throat!"

Downing: "Why don't you go to a  
drug store and get sprayed?"

Hootman: "No, it costs too much; it  
costs 15 cents."

Downing: "Atta miser."

Well, at that golf is a wholesome  
sport, says Coachs.

BROWN & CRAWFORD

Shoes and Hosiery

Cameron,

Missouri



SERVICE THAT SATISFIES

A MAN FOR EACH JOB

RADIATOR AND BATTERY WORK

RED X GARAGE

Phone 59

O. M. STAFFORD, Prop.

SLEET AND SNOW

Sleet storms the first week in December caused damage totaling between \$300,-  
000.00 to the Lincoln Telephone Company and the Bell Telephone Company of  
Nebraska, with many of the smaller companies bearing proportionately heavy losses.

A rain followed by snow and freezing weather coated the wires with ice,  
and the heavy wind that followed snapped and pulled down between 4,000 and  
5,000 poles and causes literally thousands of wire breaks.

Late fall and early spring are anxious days for the telephone companies.

THE CAMERON TELEPHONE COMPANY

SPORTING GOODS FOR MEN AND WOMEN

Complete Stock of Stationery, Conklin Fountain Pens, Toilet Goods,  
Books, Candy, Cameras and Films, Victrolas and Records.

"GET IT WHERE THEY'VE GOT IT"

S. H. HOOK & CO.

The Corner Drug Store

## Calendar

- Sept. 8—Everybody signs his rights away except the faculty members and they take control.
- Sept. 9—"Hen Party" at Rice Hall.
- Sept. 10—Class work begins. Y. W. and Y. M. socials.
- Sept. 11—Ford Hall serenades Rice Hall. Come again!
- Sept. 12—First reception given by the Two-Wise. Work in campusstry begins.
- Sept. 13—Floye Swan tries to recite Greek History at German I class.
- Sept. 14—Prof. Folsom starts work on debate.
- Sept. 15—Impromptu Freshman "Stepping Out Party." Was it a rebellion? First Ruthean meeting.
- Sept. 16—Thirty-three men report for Glee Club trials.
- Sept. 17—Nadine Nichols tells the new girls how to see "College Through the Blue Triangle."
- Sept. 18—Red Jones entertains a lady.
- Sept. 20—Where was Stafford (after chapel)?
- Sept. 23—First Criteria come out.
- Sept. 24—Kagay explains the locations of virtuous and humorous matter in the eye.
- Sept. 26—Y. W. steak fry and hike.
- Sept. 30—We see slides of "Ben Hur" and a movie of "The Sky Pilot."
- Oct. 1—Ruthean weiner roast.
- Oct. 3—Everybody gets up at 4:30 to give the boys a send-off to Marshall at 5:00 a. m. (score 13-8 for us).
- Oct. 6—Charles Taylor attempts to use his cap for a soup spoon.
- Oct. 7—John Clark visits chapel.
- Oct. 8—Billie Walters making many acquaintances.
- Oct. 9—Ruthean surprise program and plans for cleaning the hall.
- Oct. 10—"Brick" Morelock meets train No. 29.
- Oct. 11—Wesleyan loses to M. U. 13-0.
- Oct. 14—Hicks organizes the "Red and Black Peppers."
- Oct. 15—Corrine Garner leads Y. W. C. A. Academy picnic.
- Oct. 17—Much pep! Warrensburg 0—M. W. C. 16.
- Oct. 20—Virgil takes the wrong girl to the "Covered Wagon." Lois gets a ducking.
- Oct. 21—Eula Miller has her first date with Frank Slayton.
- Oct. 22—Miss Lippelt thinks Rice Hall is the first stage of Purgatory?!!
- Oct. 23—At ten-thirty Miss Asher sends S. O. S. call to Dean Dalke. The "Hen Roost" prepares for a curtain lecture.
- Oct. 24—Game with Central at Fayette. We win 42-0.
- Oct. 29—Leata Massie tells the Y. W. how to get "Bargains."
- Oct. 31—Westminster game, 13-7 for them. The faculty gives us a jolly masquerade.
- Nov. 3—Dramatic Club enjoys "O Joy San" and "The Maker of Dreams."
- Nov. 4—First Adelpian closed program.
- Nov. 5—J. I. Parker leads Y. M., giving very interesting points on Chinese life.
- Nov. 6—Corrine Garner entertains the Aesthetians at a campfire meeting.
- Nov. 7—Game with Tarkio, there, 13-6 for us. College burned eight years ago today.
- Nov. 8—Our second team beats Jackson 14-0.
- Nov. 9—Methodist squadron—Lindsey, Foster and Pollock—report on K. C. Convention for men.
- Nov. 13—First Student Recital—Ruthean-Adelpian open program.
- Nov. 14—Rolla game here with score 10-6. Clark makes a 95-yard run for a touchdown.
- Nov. 19—Men's Glee Club gives program at Stet.
- Nov. 20—Aesthesian-Excelsior open program. We see an inverted romance.
- Nov. 22—Aesthesian Concert Company to Mirabile.
- Nov. 26—Eagerly awaiting the Jewell-Wesleyan encounter.
- Nov. 27—Thanksgiving game with Jewell. We all go and enjoy the 35-7.
- Nov. 30—We read of the all-state football selection and Wesleyan is proud.
- Dec. 2—Prexy mops the chemistry laboratory floor—Ask Kinne.
- Dec. 3—Excelsior reception.
- Dec. 4—Ruthean reception at Mildred Robinson's home. Adelpian reception. Student recital.
- Dec. 5—Aesthesian reception for new girls in gymnasium. Executive Board entertains the football squad at the Cameron Hotel.
- Dec. 6—Girls' basketball game with Palmer College, here. Score 29-21 for Palmer. First teacher training meeting.
- Dec. 7—Blue Lantern gives opening dinner.
- Dec. 8—Ruthean football banquet—fifteen rahs for Whipple.
- Dec. 9—We "See Ourselves as Others See Us" and "Ten Nights in a Bar Room."
- Dec. 10—Ruthean-Adelpian Chapel program, "And the Lamp Went Out."
- Dec. 11—Aesthesian-Excelsior Chapel program. Hicks carries the "big stick" and plays the humophone.
- Dec. 12—Society application day.
- Dec. 13—Girls' basketball game with Kidder Institute. Our game, 15-5.
- Dec. 14—Christmas Cantata at M. E. Church.
- Dec. 15—Freshman party in the gym.
- Dec. 16—Aesthesian initiation and line party. Inter-class basketball games.
- Dec. 17—Excelsior initiation. Student Club's Christmas party. John A. gets a "Billy's" goat.

1925

[ 118 ]

## The CAMERON HOTEL

A Good Place to Stop

DRY GOODS

HOSE NOTIONS

The Best of Merchandise

at Very Reasonable Prices

*The LEADER*

J. H. HULSIZER, Prop.

CITY MEAT MARKET  
Fresh Meats, Cured Meats

Fresh Vegetables, Canned Goods  
Always the Best

*Hendricks & Jenson*

Phone 49

The Shave Supreme  
The Shave that's Clean—

Bobbed Hair Trimmed

*Sanitary Barber Shop*

All Work Guaranteed

DAVE CLARK, Prop.

*L. A. Wilson, M. D.*

Physician and Surgeon

Uhl Bldg.

OFFICE HOURS  
2 to 5 p. m. 7 to 9 p. m.

PHONES

Office 737 Residence 737

Mornings and Sundays by  
Appointments

A PLEASURE TO SERVE YOU

*Edelen Pharmacy*

(Service Plus Quality)

*Ocean to Ocean Cafe*

The Place Where  
Most People Eat

Student Trade Solicited

C. S. SCHNEIDER, Prop.

IT'S OUR BUSINESS

To Rebuild Your Shoes

We Double Their Life

*Electric Shoe Shop*

R. L. MACRAE

S. Chestnut St. Phone 198

For Ladies—Shine Parlor—For Gents

1925

[ 119 ]

- Dec. 18—Faculty party. Ruthean initiation and line party.  
 Dec. 19—Christmas Holiday begins. Spanish classes give chapel program. We worried about where Eugene kept the other foot.  
 Dec. 29—Fred McKee said he was glad the holidays were over.  
 Dec. 30—Everyone back at work, except a few brave mortals who dared to take double-cuts.  
 Dec. 31—College League holds a watch party. All comers directed to bring enough pie, cake and candy for himself and one other.  
 Jan. 1—Sammy Bauer says, "I'm safe for another four years." Grace Holiday resolves to get up early from now on.  
 Jan. 2—Grace starts to the Blue Lantern for breakfast at 2:00 a. m. Edmund Freeman speaks at Chapel.  
 Jan. 4—Men's Glee Club sing at the evening service in the Methodist Church.  
 Jan. 5—The snow begins to melt and we find we are troubled with Spring Fever.  
 Jan. 6—A good crowd out to see, "One Exciting Night." Dean Dalke leaves for Chicago.  
 Jan. 7—Men's Glee Club give program at Barwick Chapel.  
 Jan. 8—Aesthesian, Excelsior open program.  
 Jan. 13—Exam week. Nuff said.  
 Jan. 15—Game with Central Wesleyan.  
 Jan. 16—We cleaned Palmer, there.  
 Jan. 17—The Jolly's beat our Girls at St. Joe.  
 Jan. 21—Rice Hall has a "kid party."  
 Jan. 23—Little red neckties begin to seem numerous.  
 Jan. 27—Basketball game here with Jewell. 24-25 for us.  
 Jan. 28—This notice seen on the bulletin board, "Lost some place in the gym, a wad of gum. Finder please return to Dean Dalke."  
 Jan. 29—Ruthean, Adelphian open program in Chapel.  
 Jan. 30—Jolly Girls play Wesleyan Girls here.  
 Jan. 31—Coach Collins considers moving track practice away from the south windows of the Library so Toad Parks won't stumble over the hurdles.  
 Feb. 3—Mary Pickford in "Tess of the Storm Country."  
 Feb. 4—In Chapel Dr. Curtis tells us to keep playing.  
 Feb. 5—Girls debate against boys. Dean Dalke says both sides win.  
 Feb. 6—First public student recital.  
 Feb. 7—K. C. A. C. Track Meet. Coy, Clemens, Imes and Bangs bring home medals.  
 Feb. 8—John Clark takes semi-monthly bath.  
 Feb. 9—Ladies' Glee Club gives musical at Osborn.  
 Feb. 10—Central "Eagles" defeat us 31-29.  
 Feb. 11—Temperature was 40 degrees F. and Maynard said his car was frozen up.  
 Feb. 12—Ladies' debate team loses to K. S. A. C.

- Feb. 14—Jay Tomlin's valentine for Miss Garner gets side-tracked.  
 Feb. 15—Everett Clemens was seen roller skating during Sunday School time.  
 Feb. 18—Does Elza Redman prefer to debate to an audience which remains seated?  
 Feb. 19—Social Path. Class goes to the Poor House. We beat Missouri Valley 24-20.  
 Feb. 20—Roy Schnieter tries to sterilize water in dry air.  
 Feb. 21—Mrs. Gunckel gives Y. W. a tea. Our Girls play Y. W. from K. C.  
 Feb. 23—Ladies' Quartette sing for Knights of Pythias. Nate Sims gets interesting material from Marriage bureau. Rev. A. Peterson starts a series of talks in Chapel.  
 Feb. 24—Game with Jewell there.  
 Feb. 25—We wonder how Zip felt when the lady from Camden Point prostrated herself before him.  
 Feb. 26—A negligence in Chapel attendance this week.  
 Mar. 3—McCullough and his Club spend a night at the Manhattan Grill.  
 Mar. 8—Eula and Willie Belle draw straws for an evening with Doc.  
 Mar. 10—Dramatic Club presents "Daddy Long-Legs."  
 Mar. 13—Friday. Black Cats! Broken Mirrors! and Brick Morelock with Phoebe Lowery.  
 Mar. 14—Girls' debate team defeat the team from Demoines.  
 Mar. 16—Boys' debate team, Redman, Taylor and Moore, take Baker University to a trimming.  
 Mar. 17—Ruthean Banquet.  
 Mar. 19—Ladies' Glee Club gives program at M. E. Church.  
 Mar. 30—Our boys debate at Emporia.  
 Mar. 31—Miss Lippelt hopes her many misdemeanors will this year be omitted from the scandal sheet.  
 April 1—Ottawa debated us here.  
 April 3—Men's Glee Club program.  
 April 6—Debated with Jewell, here.  
 April 8—Debated with Central Wesleyan.  
 April 13—The faculty had a party.  
 April 17—(?) Eva Crawford gave a Senior recital in voice.  
 May 1—Opera, "The Gondoliers," given by the Expression and Music Departments.  
 May 4—Grace Holiday gave senior recital in expression.  
 May 8—High School track meet.  
 May 11—Lou Gene Evans gave Senior recital in voice.  
 May 15—Luther Swift gave post-graduate recital in voice.  
 May 18—President Buck gave reception to Seniors.  
 May 19—Joint meeting of Y. M. and Y. W.  
 May 24—Baccalaureate Sermon.  
 May 25—Domestic Science Art Exhibit. Academy Graduation.  
 May 26—Senior Chapel. Alumnae Banquet. Alumnae Contests.  
 May 27—Commencement at 2:30. 8:00 p. m. Aesthesian Lawn Fete.

## Service

## Quality

We have at all times the Best Seasonable  
 Cut Flowers — Fresh Every Day From  
 Our Own Greenhouses

You Will be Assured of First Quality  
 When Ordering Your Flowers Here.  
 Flowers for Special Occasions Our  
 Specialty.

Students Will Find a Cordial Welcome at All Times

R. E. CATER  
 THE FLORIST

"Flowers Speak"

The OWb

## SERVICE

Every employee of this institution is instructed to be obliging, courteous and prompt in attending to the wishes of every patron of this bank, whether he be our biggest or smallest depositor.

*The FARMER'S BANK of CAMERON*  
THE OLDEST BANK IN TOWN

---

Fresh and Staple Groceries  
and Meats

Fresh and Cured  
Phone 51

Hagan's Grocery

Denny's Barber Shop

South Chestnut Street

First Class Workmen

Your Patronage Solicited

---

For Fancy Eats—Let Us Help You Plan Your Party or Picnic

### William's Grocery Company

Purveyors of Fine Foods

Chase & Sanborn's  
Tea and Coffee

"Queen of the Pantry"  
Flour

Lee Club House  
Canned Goods

PHONE 520

---

We furnish Prompt Service on the Only

REALLY PURE ICE SOLD

Consequently, in preference to using ice that may not be pure,  
PHONE YOUR ORDERS TO

## THOS. FIDDICK

FEED, FUEL AND ICE

Phone 77

1925

[ 122 ]

The OWb

## "Quality First"

Is Our Motto

And That's What You Want in a  
Photograph

### A. S. Brown

Photographer

105 E. Third St. Cameron, Mo.

Try Our Kodak Finishing

1925

[ 123 ]

*The News Observer*  
Established 1906

Valuable Advertising Medium  
Because Everybody Reads It

Modern Equipped Job  
Department

B. B. WITT, Prop.

Lincoln—FORD—Fordson  
Cars—Trucks—Tractors

Authorized Sales and Service

*W. N. Darby*  
*Motor Company*  
Cameron, Missouri

Dr. L. F. Graham  
Dentist

Office Over Hook's Drug Store

PHONES  
Office 155      Residence 585

J. W. POLAND

FURNITURE AND  
PICTURE FRAMING

Y. M. C. A. Building

*The Cousins Lumber Company*

All Kinds of Building Material

QUICK SERVICE

CAMERON,

MISSOURI

*The First National Bank*

Capital and Surplus \$100,000.00

Member of the Federal Reserve System

YOUR BUSINESS APPRECIATED

*Time Dims Many  
Pleasant Memories  
—But Photographs  
Remain Throughout  
The Years*



*Luce Studio*

FRED E. LUCE  
Cameron, Missouri

Photographer for the "OWL" 1925

J. C. McCOMB, President

C. E. KNOOP, Treasurer

*Cameron Co-operative Elevator Association*

CASH DEALERS IN

Coal, Feed, Oils, Sewer Pipe, and All Farm Products

F. E. SEATON, Mgr.

CAMERON, MO.

**CITIZEN'S STATE BANK**

Cameron, Mo.

Welcomes Missouri Wesleyan Students

Lod P. O. Bldg.

Phone 23

**ED BYERS**

Cleaner and Tailor

Shoe Repairing

CAMERON,

MISSOURI

**LEIBRANDT  
JEWELRY  
STORE**

Cameron, Missouri

**Owen & Murray**

The Rexall Store

Drugs, Wall Paper, Stationery,  
Kodaks, Fountain Pens, Soda  
Fountain in Season

119 East Third Street

Diamonds, Watches, Clocks,  
Silverware and Jewelry  
Pianos, Phonographs and  
Radio Sets

1925

“ST. JOE---LET'S GO!”

*We Congratulate All the Members  
of the  
1925 Class*

This Message Carries Our Best Wishes As  
You Cross the Threshold Into the More  
Important and Serious Side of Life.

**MEMBERS  
ST. JOSEPH STORES  
ASSOCIATION**

Townsend, Wyatt & Wall Dry Goods Company.

Bon Marche.

Derge-Bodenhausen Clothing Company.

Plymouth Clothing Company.

Townsend-Ueberrhein Clothing Company.

Hirsch Brothers Dry Goods Company.

The Princess.

Lehman Brothers Dry Goods Company.

Kirkpatrick Jewelry Company.

Block Brothers Clothing Company.

Regnier & Shoup Mercantile Company.

1925

*No Two Persons' Eyes Are Alike*

That is the reason why the Optometrist must give the closest attention to every patient. And where lenses are furnished, they must be prescribed and prepared to suit the needs of the individual. Our services are complete.

EYES  
EXAMINED



GLASSES  
FITTED

**Sampson Lost  
His Strength**

When his wife cut his hair.  
Don't take a chance—come to the

**Palace Barber Shop**  
Claude Wingate, Prop.

CAMERON - - - MO.

**Can You Think**

Of taking your repair work any-  
where else when

E. T. ATKINSON

repairs everything to satisfy the  
most exacting.

Location, Walnut and Second Sts.

WE OFFER—

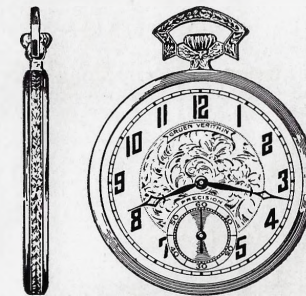
**Quality ☞ Variety ☞ Price**

**W. E. HIBBS  
DRY GOODS COMPANY**

Cameron's Quality Store

Dry Goods

Women's Wear



**GRUEN VERITHIN**

To You Who Graduate  
We Offer Our Congratulations  
AND  
To Your Friends Who Would  
Commemorate this Important Epoch  
in Your Lives  
We Offer the Best in Watches,  
Diamonds, Ivory and Leather Goods

F. H. AMES  
Jewelry and Music Store

W. E. GOLL  
Registered Optometrist  
CAMERON, MISSOURI

DRESSES

COATS

HATS

for

COLLEGE GIRLS

**Cameron  
Style Shop**

First Class Plumbing and  
Heating

All Work Guaranteed

**Henry L. Johnson**

PHONES  
Office 204 Residence 561



We Sell LONG-BELL Lumber  
J. B. RUSSELL  
CAMERON, MISSOURI



We appreciate the valued friendship of the student body and our efforts will be to increase this friendship in every way possible.

THE CAMERON PROGRESS

Tom W. Klepper, Cameron, Mo.

Compliments of  
*Hillyard Chemical Co.*  
ST. JOSEPH, MO  
*The Home of*  
PINE-O-CIDE and SHINE-ALL

WISE BROTHERS

CASH GROCERY

Fresh Fruits and Candies  
Phone 281

CAMERON - - - MO.

*John T. Frazier*

Furnaces and Sheet  
Metal Supplies

CAMERON - - - MO.

*Emporium*

A Clean and Wholesome Recreational Parlor

Billiards and Pool Games of All Kinds

**Mathena Billiards Parlor**

Cameron,

Missouri

Dr. C. S. Compton  
and  
Dr. Paul Black

OSTEOPATHIC  
PHYSICIANS

CAMERON - - - MO.

A. C. WELSH  
High Grade Groceries  
Candies and Fruits  
Phone 345

Cleaning, Pressing, Tailoring

H. KAPKE

"The Master Tailor"

Phone 98

Upstairs

EVERYTHING TO EAT AND  
DRINK

*NEFFS*

*Bakery and Fountain*

Delicious Refreshments

Excellent Service

CAMERON - - - MISSOURI

*Cameron X L Cream*

A CHAPMAN PRODUCT

We are proud to introduce something new and different. No extract used in X L—the pure Vanilla bean is pulverized and mixed directly into the ice cream.

The Flavor is Marvelous—Distinctive—Matchless

You know it's there; you can "see" the tiny particles of Vanilla all through the cream. Nothing else like it. Once you taste this cream no other kind will satisfy. Ask for X L at home or at the fountain.

"YOU CAN" the "FLAVOR"

Cameron Dairy Company

Cameron, Missouri

**Plain Price Mercantile Co.**

Telephone 58

DRY GOODS, GROCERIES, SHOES AND NOTIONS

Home of

PHOENIX SILK HOSE

For Men and Women Who Care

Cameron,

Missouri

**Place Bros.**


The Home of

TOWN CRIER FLOUR

**JUNCTION  
EATING HOUSE**

First Class Meals and  
Short Orders

W. E. QUIGLEY, Prop.



*Delicious Foods  
bear this Emblem*  
for it is  
the Guide to  
High Grade Foods  
at your Grocer's

*More than a hundred  
pure foods to choose from*

## Zimmerman & Brown's Dairy

We have recently installed a De Laval Milk Clarifier and all the milk we sell is clarified and purified by this machine. The best milk in the world is improved by this process. The scientific application of centrifugal force removes every particle of undesirable matter. No strainer or filter can accomplish anything like the same result.

Phone 287 or 589      Cameron, Mo.

## The Winchester Store

We Handle International Line of Implements,  
McCormick and Deering

Hardware, Tools, Cutlery, Harness,  
Oils and Paint

### O. E. CONNELL

Phone 63

## In Closing—

We have completed the last obstacle of grind as the Owl Staff and are presenting to you, not a masterpiece for our successors to cherish after we have been hidden under a stone, but a record of events and gallery of your friends who mingled with you in the happy year of 1924-25, so that you shall always remember them when the fireside substitutes for the movies.

The year has been a most successful one and the staff has strived to deal with each division showing partiality to none.

We trust that if the 1925 Owl meets with your approval we will feel repaid for our efforts.

—The Editor.

