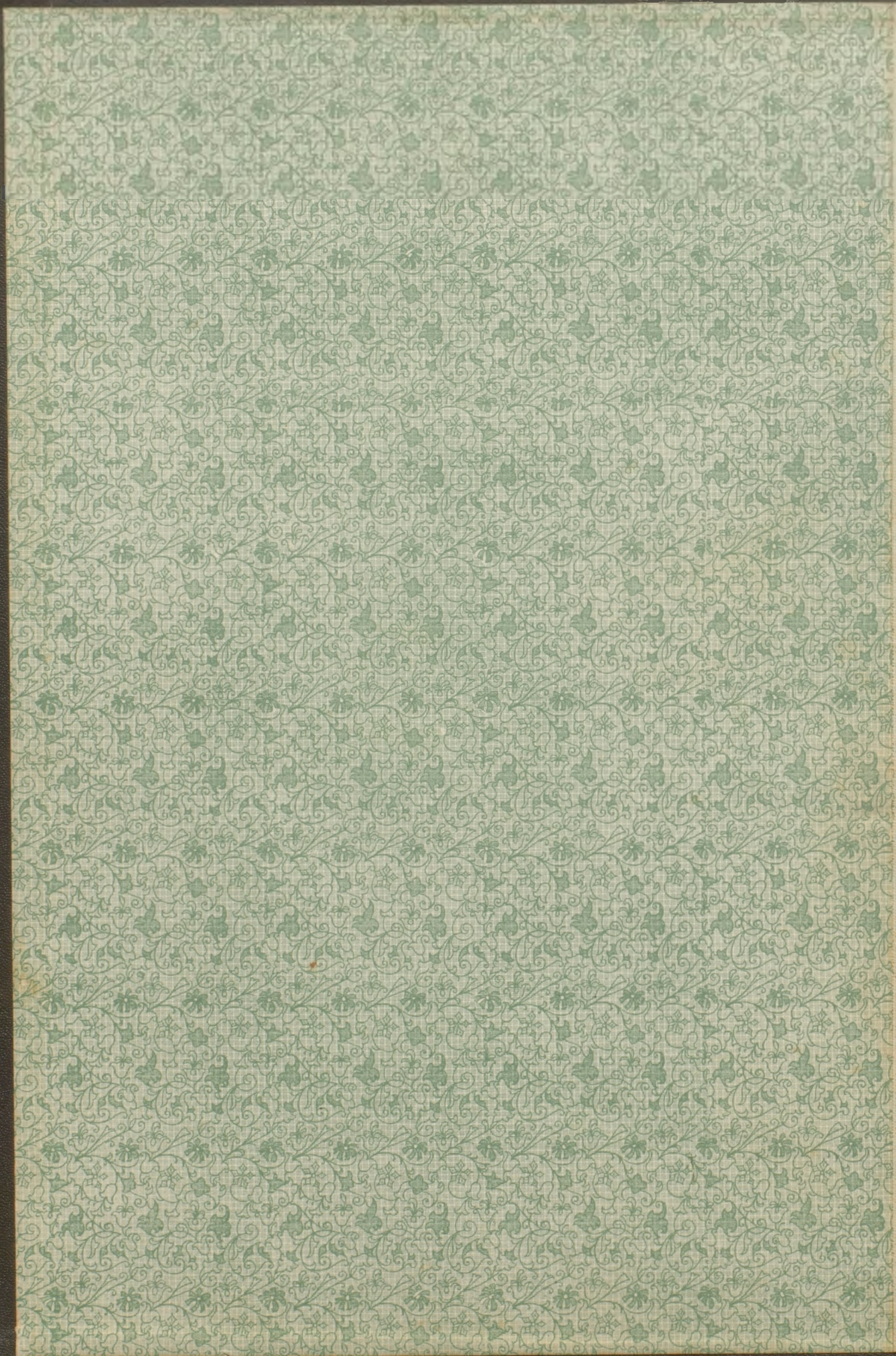
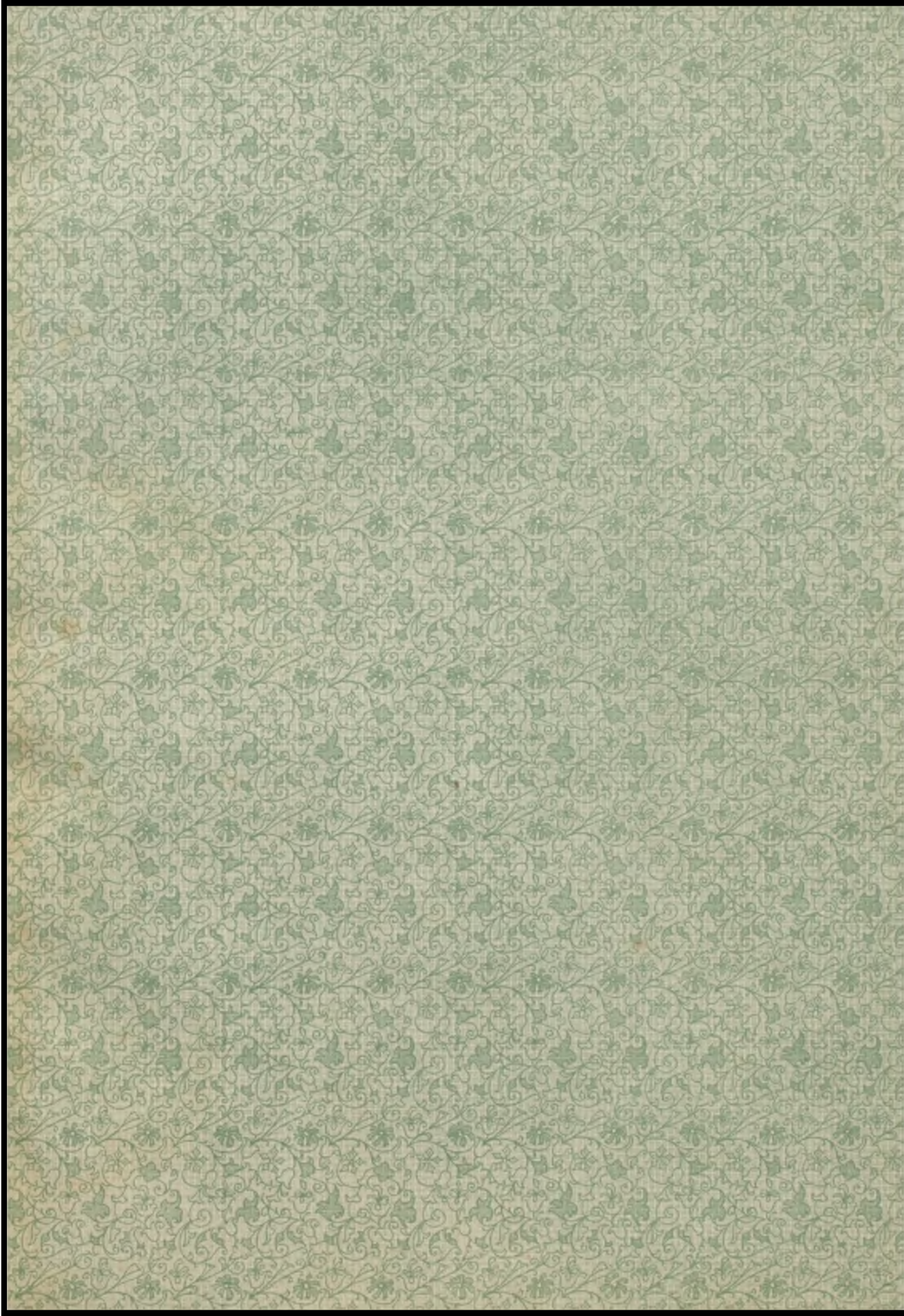
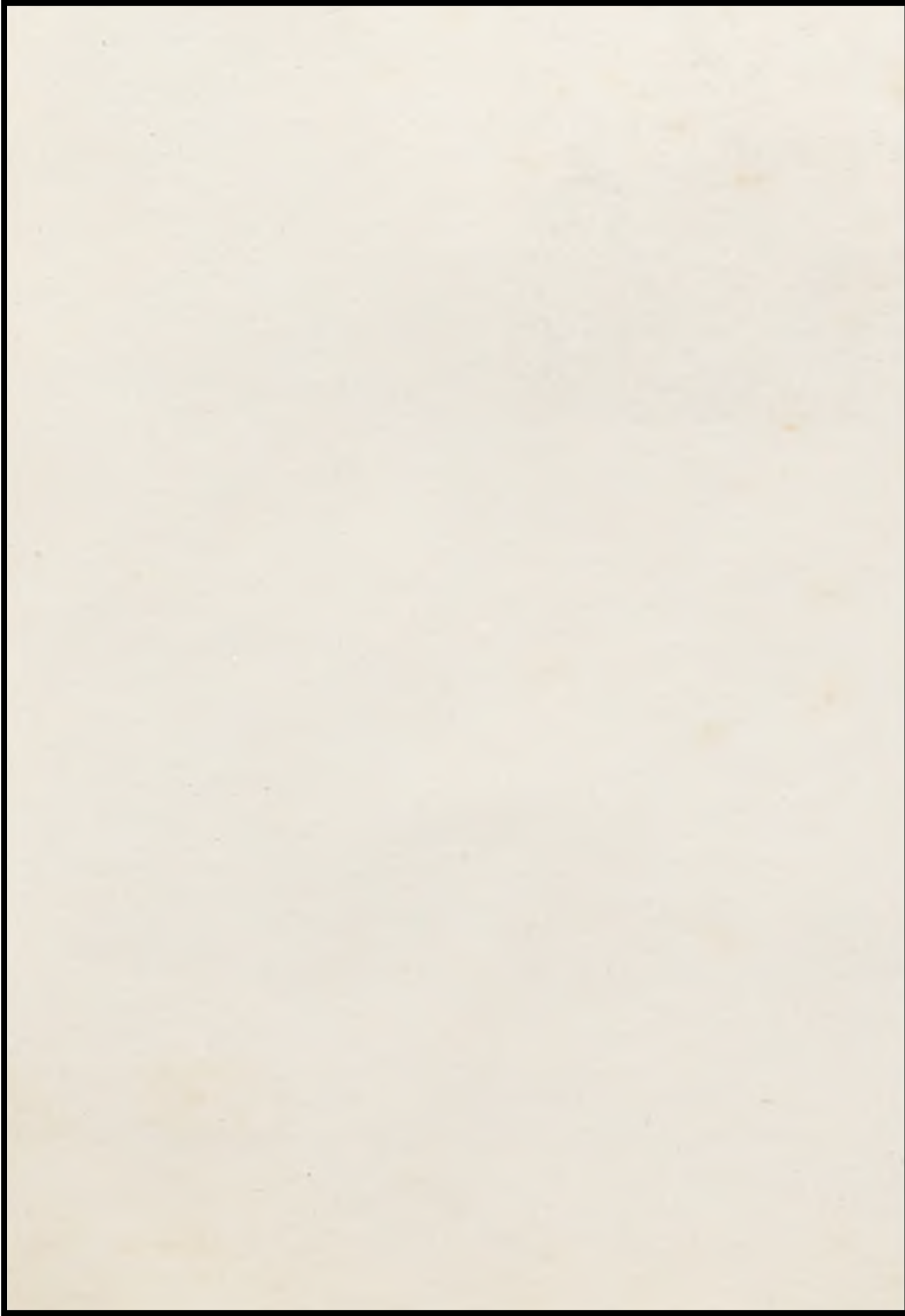


The
Mystic

Fineman and Gifford







— C. H. S. - 1922 —

Ex Libris

A decorative flourish consisting of a central floral motif with symmetrical scrollwork extending outwards.

◆-----THE MYSTIC-----◆

The Mystic 1922

Cameron High School
Cameron, Missouri

AN ANNUAL WHICH REPRESENTS THE
HAPPY TIMES SPENT IN CAMERON HIGH
SCHOOL DURING THE YEAR 1921--1922

FOREWORD

We the staff of the 1922 Mystic
present herewith our best efforts.
There may be mistakes, but you will
forget them we hope, and enjoy this
book and cherish it for its true worth.

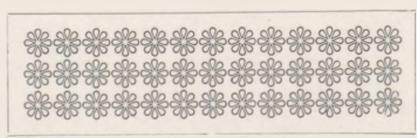
We hope it may fulfill its pur-
pose in recalling fond memories of
times spent in Camerou High.



Dedication

EVER SINCE COMING TO CAMERON, SUPERINTENDENT GWINN HAS HAD THE WELFARE OF CAMERON HIGH SCHOOL AT HEART. HIS ENERGIES AND THOT HAVE EVER BEEN DIRECTED TO MAKE CAMERON HIGH A BETTER SCHOOL. UNSTINTINGLY HAS HE LABORED AND MORE PROGRESS HAS MARKED HIS UNTIRING EFFORTS. WITH A POWERFUL PERSONALITY AND WORLD OF SKILL, HE HAS SURMOUNTED ALL OBSTACLES TO MAKE CAMERON'S SCHOOL SYSTEM EDUCATIONALLY EFFICIENT.

WE THE ANNUAL STAFF AFFECTIONATELY DEDICATE THIS VOLUME OF THE MYSTIC TO SUPT. A. C. GWINN IN RECOGNITION OF HIS SERVICES.



◆----- C. H. S. - 1922 -----◆



MR. A. C. GWINN

— THE MYSTIC —

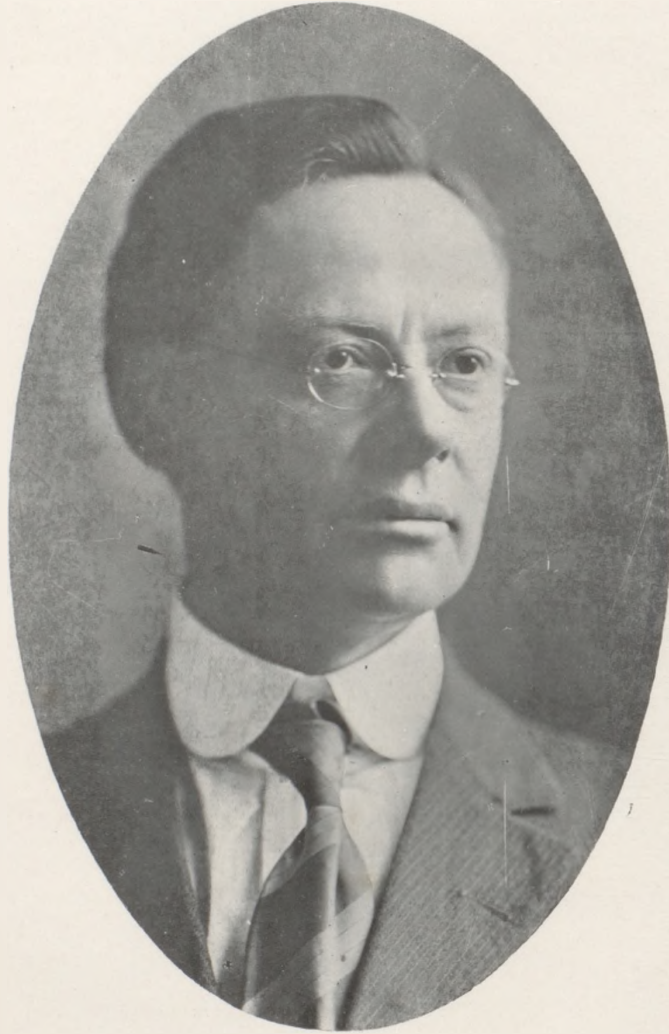


J. HARRY HULSIZER
LYLE ALLEN
J. N. ELLIS

NEIL UHL
CLARENCE STAPLES
B. E. BANGS



◆-----THE MYSTIC-----◆



MR. A. C. GWINN
Superintendent of Schools
Drake University, A. B.
Missouri University, B. S. A. M.



MISS REBA F. TOMLIN

Principal.

A. B. Colorado State Teachers' College.

◆-----THE MYSTIC-----◆



MISS ADA LEE Chillicothe, Mo.
Commercial Department, Graduate
Chillicothe Business College, Student
Missouri University, Student Colo-
rado University. A member of last
year's faculty.



MR. CARL GROSS Cameron, Mo.
Vocational Agriculture, B. S. Uni-
versity of Missouri. A member of
last year's faculty.



MR. WILSON THOMAS
Science and Physics, B. S. Missouri
Wesleyan College. A member of last
year's faculty.

◆----- C. H. S. - 1 9 2 2 -----◆



MISS DORTHY CLARK Columbia, Mo.
Home Economics Department. B. S.
University of Missouri.



MISS PEARL HERRIN St. Joseph, Mo.
Englis Department. Student Colora-
do University. A. A. Stephens' Col-
lege. B. S. University of Missouri.



MISS VESTA RHOADES Slater, Mo.
Home Economics Department. A. A.
Stephens' College. B. S. University of
Missouri.



MR. W. J. LYLE Cameron, Mo.
Athletic Director. Teacher Training
Agriculture, Spelling and Arith-
metic. Student Illinois University.
B. S. Missouri Wesleyan College.

◆-----THE MYSTIC-----◆



MR. J. N. JORDAN Kansas City, Mo.
Latin, English and French. Occu-
pations and Civics. A. B. Knox Col-
lege, Illinois.



MISS ISABEL COONS Liberty, Mo.
Mathematics Department. B. S.
William Woods College.



MISS ANNA LOU PIGGOT, Kansas City Mo.
History and Civics. B. S. University
of Missouri.



MISS MARGARET CAMERON, Hannibal
French and English Department.
B. S. University of Missouri.



MR. FRANK RICHARDS, Farmington, Mo.
Vocational Agriculture. B. S. University of Missouri.



MRS. PEARL WARNER Cameron, Mo.
Head librarian, Study hall. Student
N. W. Missouri Teachers College.
Student Missouri Wesleyan College.
A member of grade faculty four
years.



MISS ESMA SOMERVILLE, Mercer, Mo
Musical Director. Graduate Missouri
Wesleyan College. Post Graduate
Missouri Wesleyan College.

THE MYSTIC

"You Can Do What You Think You Can"

How do you tackle your work each day?
Are you scared of the job you find?
Do you grapple the task that comes your way
With confident easy mind?
Do you stand right up to the work ahead
Or fearfully pause to view it?
Do you start to toil with a sense of dread,
Or feel that you're going to do it?

You can do as much as you think you can,
But you'll never accomplish more;
If you're afraid of yourself, young man,
There's little for you in store.
For failure comes from the inside first,
It's all in the way you view it.
And you can win, though you face the worst,
If you feel that you're going to do it.

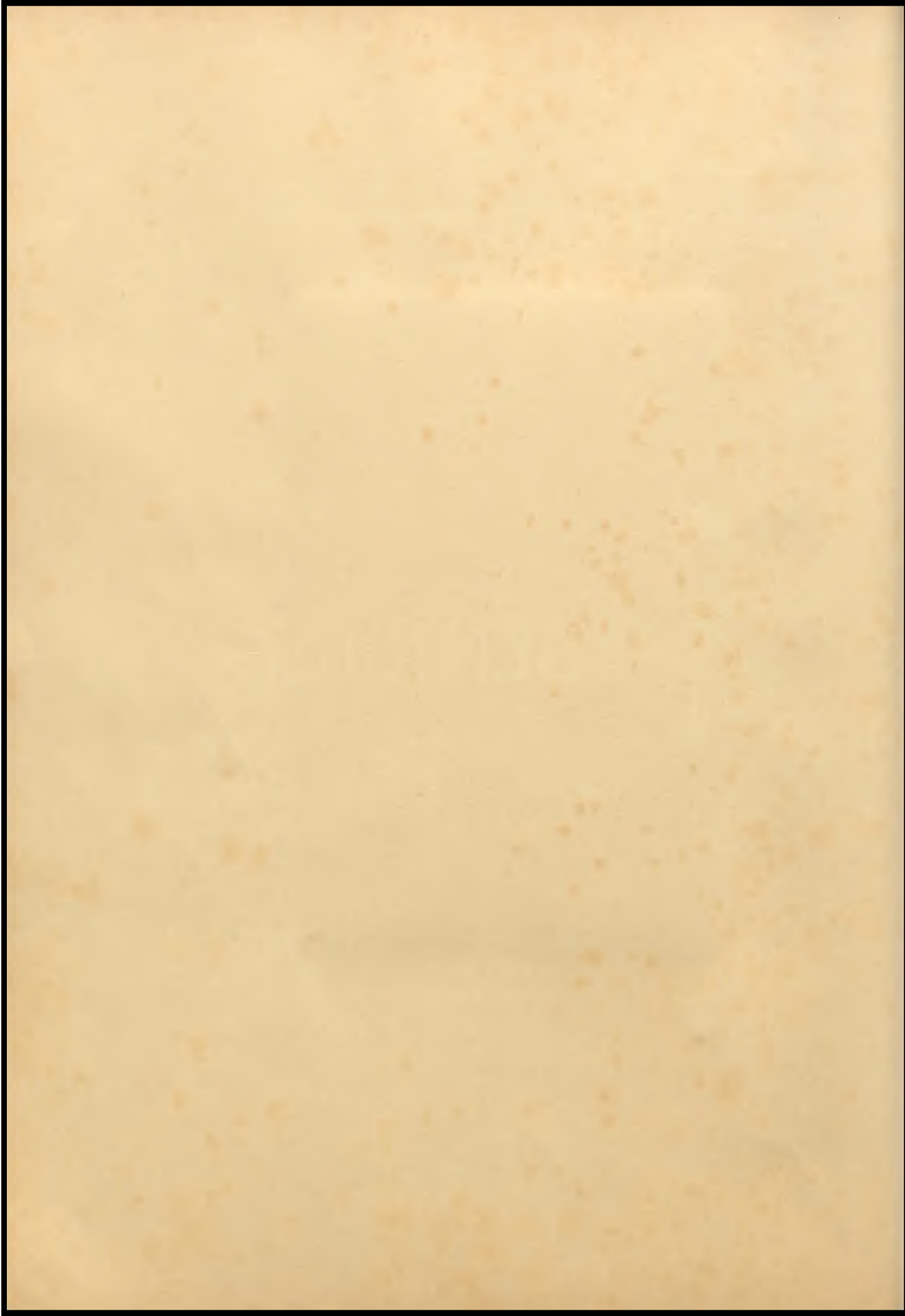
Success! It's found in the soul of you,
And not in the realm of luck.
The world will furnish the work to do,
But you must provide the pluck.
You can do whatever you think you can,
It's all in the way you view it.
It's all in the start you make, young man;
You must feel that you're going to do it.

How do you tackle your work each day?
With a confidence clear, or dead?
What to yourself do you stop and stay,
When a new task lies ahead?
What is the thought that is in your mind?
Is it fear ever running through it?
If so, just tackle the next you find,
By thinking you're going to do it.



MARGARET WITT
"May Queen"

Photo by A. S. BROWN, Cameron, Mo.



— C. H. S. - 1922 —



SENIORS

◆-----THE MYSTIC-----◆



JAMES PERCY GILCHRIST, Cameron, Mo.

T. O. W., Football letter man 3 years.
(Captain).

"I am a stranger here. Heaven is my home." "Billy."

ETHEL SCHLEICHER Cameron, Mo.

Home Ec. Club.

"You can't judge her by her name."

CECYL WILEY Cameron, Mo.

R. T. Z., Girls' Glee Club, Annual staff, Tank staff, Home Ec. Club.

"A loyal supporter of athletics, especially interested in Basketball. We wonder why?"

CLYDE LEWIS Cameron, Mo.

T. O. W., Football letter man 4 years, Basketball letter man 2 years, Quartette, Octette, Track 2 years, Tank staff, Boys' Glee Club.

"His interests are centered on the corner of 4th and Cherry Streets. H-O-W C-O-M-E."

SHERLOCK HIBBS Cameron, Mo.

T. O. W., Football letter man, Editor-in-chief Annual staff, Track, Class Vice Pres., Treas. Athletic Association.

"Life's rarest gift is a pleasing personality combined with a world of determination."

MILDRED BLACKETER Cameron, Mo.

R. T. Z., Basket ball.

"She evidently thinks that Trenton is Volsteads birth place."

SIDNEY S. BROWN Cameron, Mo.
T. O. W., Annual Staff, Senior play.
"He looks before he steps and he
steps before he goes."

ESTHER HOOTMAN Cameron, Mo.
R. T. Z., Basket ball, Girl's Glee
Club, Yell leader, Home Ec. Club,
Senior Play, Attendant to May
Queen.
"Coke fiend, but nevertheless a
mighty good sport"

MABEL KENDRICK Cameron, Mo.
Girl's Glee Club.
"A maid with a quiet disposition."

EDWIN CROUCH Turney, Mo.
T. O. W., Football letter man two
years, Basketball squad, track.
"Who mixed reason with pleasure,
and wisdom with mirth, if he had any
faults, he left us in doubt."

JOHN BYERS Cameron, Mo.
T. O. W., Yell leader, Foot Ball let-
ter man two years, basketball squad.
"Blessed are they who are silent for
they are never quoted."

MILDRED DOWNING Cameron, Mo.
R. T. Z., Girl's Glee Club, Annual
staff.
"Her frowns are fairer, far than
smiles of other maidens are."



◆-----THE MYSTIC-----◆



GEORGE CLINE Cameron, Mo.

T. O. W., Basketball squad, Boys' Glee Club, Octette, Quartet.

"My idea of personal liberty is free and unlimited speech in class."

LUCILE CAMPBELL Cameron, Mo.

"A quiet friendly girl who always does her part."

IDA HUNTER Cameron, Mo.

"What does she see in St. Joseph that is so attractive?"

ERWIN SWEEM Cameron, Mo.

T. O. W., Football letter man 4 years, Basketball letter man 4 years.

"The ideal of the sixth hour English class."

VINCEL BALDWIN Cameron, Mo.

T. O. W.

"Concentration and preparation are the things that destroy the mind."

IVA MILLER Cameron, Mo.

"Has acquired so much knowledge in C. H. S. that she had to put on sideboards." (Ear bobs)

◆----- C. H. S. - 1922 -----◆

DYRE CAMPBELL Cameron, Mo.

T. O. W., Football letter man 3 years.
Annual Staff, Tank Staff, Senior Play.

"A boy who finishes everything he starts and does it well."

HAZEL WILLIAMS Turney, Mo.

Home Ec. Club, Camp Fire Girls.

"I can't help it 'cause I'm so bashful, it's natural."

KATE BOWMAN Turney, Mo.

"Little dobs of powder, little dobs of paint, make these H. S. girls look like what they ain't."

HERBERT MORRIS Cameron, Mo.

T. O. W., Track.

"It's all Herbert can do to "Cope" with the girls."

PAUL WITT Cameron, Mo.

T. O. W., Football squad, Annual Staff.

"I believe in being ambitious but it takes too much energy."

JOSEPHINE O'CONNOR Cameron, Mo.

Girls Glee Club.

"Quiet, demure and very neat."

VERNON TODD Cameron, Mo.

T. O. W., Basketball letter man.
Editor in chief of Tank.

"A wizard at the art of?"



----- THE MYSTIC -----



DOROTHY BROWN Cameron, Mo.
R. T. Z. (Pres.) Basketball, annual staff, Senior play.

TED. L. SILVIUS Cameron, Mo.
T. O. W., Tank Staff.
"So quiet and unassuming. When?"

MORRIS MOON Cameron, Mo.
T. O. W. Pres., Athletic Ass'n. Track.
"Po myself alone I owe m; fame"

BESSIE JUNE ASSEL Cameron, Mo.
R. T. Z. Girl's Glee Club.
"Oh woman! It is thou that causest the tempests that agitate mankind."

LOIS SMITH Cameron, Mo.
R. T. Z., Girl's Glee Club, Senior Play.
"To everyone and no one in particular."

PAUL BUZZARD Cameron, Mo.
T. O. W., Football letter man.
"A lover of 'Fresh' dates."

◆----- C. H. S. - 1922 -----◆

RAYMOND PECK Cameron, Mo.
T. O. W.

"Likes to "kid" Miss Warner. An ardent admirer of 'Whiz Bang.' "

VENITA HINER Cameron, Mo.

"Have you the latest copy of Photo-play?"

JEANETTE CHAPMAN Cameron, Mo.

R. T. Z., Yell leader, Class Sec. and Treas., Annual Staff, Debating Club, Basket Ball.

"Don't measure my faults by my shadow."

GERALD O'LAUGHLIN Cameron, Mo.

T. O. W.

"Quiet but very industrious."

WILBUR MOORE Cameron, Mo.

T. O. W., Debating team.

"Long on all subjects especially legs."

CORRINE GARNER Cameron, Mo.

Girl's Glee Club, Home Ec. Club.

"I answer what you ask, nothing more."



— THE MYSTIC —



RUTH BALLINGER Cameron, Mo.
 "Shes not the Ruth in the Bible, but she means as much to some."

GAYLAND LINHART Cameron, Mo.
 T. O. W. Debating Team, Boys Glee Club, Senior Play, Sec. of Athletic Association, Vice. Pres. Senior Class.
 "Very gay and has a big heart—for some people."

WYNNE CASTEEL Cameron, Mo.
 T. O. W., Football Letter Man, Track, Orchestra, Bank Staff, Pres. Senior Class second Sem.
 "He's not as dense as his last name implies."

PEARL MORTON Cameron, Mo.
 Orchestra, Girls Glee Club.
 "Altho her name means pearl to a few boys she studies just the same."

FAIRIE JONES Osborn, Mo.
 R. T. Z., Girls Glee Club, Declamation.
 "Just a little fairie she trips here and there entering all school activities."

JOSEPH HOLIDAY Cameron, Mo.
 T. O. W. Football squad, Track.
 "His name may imply a holiday, but he rarely ever stays out just the same."

◆----- C. H. S. - 1922 -----◆

WYNONA LAWSON Osborn, Mo.
 Home Ec. Club.
 "She can converse in Latin, French
 and English. A rare accomplishment."

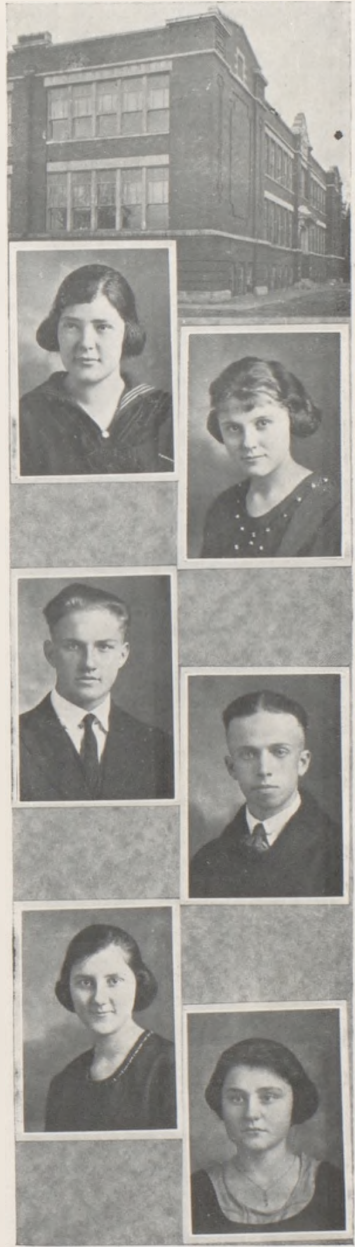
LUCILE WASON Cameron, Mo.
 Girl's Glee Club.
 "She's going to specialize in Home
 Ec. We wonder why?"

LYNN WELLS Cameron, Mo.
 "T. O. W., Track, Football squad,
 Basket Ball squad.
 "A doomed bachelor of the Aggies."

CLEO BROWN Cameron, Mo.
 T. O. W., Basketball letter man,
 Track.
 "He's fond of chasing fairies in the
 moonlight."

PEARL DANIEL Cameron, Mo.
 "The girl who teaches the young idea
 to grow."

LOUISE REMPIER Cameron, Mo.
 Basket Ball, Home Ec. Club.
 "A coming member of the Stellar
 system."



— THE MYSTIC —



MARY BRIDGES Cameron, Mo.

R. T. Z. Girl's Glee Club, Attendant to May Queen, Annual staff, Senior Play, Tank Staff.

"Next year when she enters an institution of higher learning C. H. S. will be the loser."

JEROME McCULLEY Cameron, Mo.

T. O. W.

"I am not led astray by the direction of sweet maidens' eyes."

CLIFFORD CONSTANCE Cameron, Mo.

T. O. W., Boys' Glee Club, Quartet Octette, Annual Staff.

"As a student he is excellent, as a singer he is great. But Eva thinks him best 'long 'bout half-past eight."

EVA PRICE Cameron, Mo.

R. T. Z., Annual Staff, Maid of Honor.

"She comes up to Clifford's standards of an 'ideal girl.' "

LOIS LAWSON Osborn, Mo.

R. T. Z. Octette, Girl's Glee Club, Senior Play, Home Ec. Club, Declamation.

"She's pretty and neat as you can see, and just as dear as she can be."

HAYWOOD WALKER Cameron, Mo.

T. O. W., Track.

"Wages strong competition among the Freshmen boys and usually carries off the prize."

◆-----◆ C. H. S. - 1922 -----◆

PAULINE DAVIS Cameron, Mo.

R. T. Z., Girls Glee Club, Octette.

"There's a woman at the bottom of all great things."

OMAR BUZZARD Cameron, Mo.

T. O. W., Track, Orchestra, Boy's Glee Club.

"A wild nature needs a wise ward."

EVERETT BYERS Cameron, Mo.

T. O. W., Football letter man, Basket ball squad, Track, Class Pres., Annual staff, Tank staff.

"For when he will, he will; and you may depend on it, and when he won't he won't and you may depend on it."

THELMA HARBOR Cameron, Mo.

Girl's Glee Club.

"To blush is beautiful, but sometimes inconvenient."

NELLIE MAE GRAEFF Osborn, Mo

"Beauty without grace is like bait without a hook."

DONAVAN SIMMONS Cameron, Mo.

T. O. W.

"Nature has produced some strange fellows in her time."



◆-----◆ THE MYSTIC -----◆



MARGARET WITT Cameron, Mo.
 R. T. Z., Basket Ball, Girl's Glee
 Club, May Queen.
 "As lively and peppy as she is small,
 and withal a sunny disposition."

CLAY GWINN Cameron, Mo.
 T. O. W., Foot Ball squad, Orchestra.
 Boys Glee Club.
 "Not easily moulded, but when
 shaped runs true to form."

GEORGE SILVIUS Turney, Mo.
 T. O. W., Foot Ball Letter man.
 Track.
 "His hair, accompanied with his
 "Witt" causes many to be jealous."

DORIS JEAN MAXWELL Cameron, Mo.
 R. T. Z., Orchestra.
 "Once said to be a man-hater, but
 "Oh Boy!" You don't know.

ETHEL CONSTANCE Cameron, Mo.
 Girl's Glee Club.
 "Quiet and unassuming. Her gentle
 way wins for her many friends."

HAROLD MUNSELL Cameron, Mo.
 T. O. W.
 "Has plenty to say be it wise or other
 wise."

JUNIOR



◆-----THE MYSTIC-----◆



ANDERSON CROUCH Turney, Mo.
Track, Football squad.
"All men are mortal."

AMY LOOS Cameron, Mo.
Girls Glee Club, Girls B. B. squad.
"She is worth her weight in gold."

AILEEN HALE Turney, Mo.
"Did you ever see her alone?"

HECTOR MILLER "Heck" Turney, Mo.
Boys Glee Club.
"You can't have too boys Glee Club."

CARL HOLLAND Turney, Mo.
Football letter man.
"Live and let live."

ELSIE MUDERS Cameron, Mo.
Basketball team.
"If Elsie loves as hard as she guards
in basketball she will undoubtedly
make some man happy."

RUTH REDD Cameron, Mo.
"Wisdom is better than riches."

PAUL BROWN Cameron, Mo.
Beanny.
"Contentment is better than riches."

THE MYSTIC



DOAK McKEE Perrin, Mo.
Football letter man, Boy's Glee Club,
Class Pres.

"We ain't hear nothin' on his views
of matrimony but we think he's fer
it."

DONNA HAGAN Cameron, Mo.
Camp Fire Girls, H. S. Pianist, Or-
chestra.

"She's a mean follower of Pat-
ariska."

MARIAN CONKLIN Cameron, Mo.
Girls' Glee Club, Home Ec. Club,
Camp Fire Girls.

"Oh, curly locks why pass me by?
It will never do to be so shy."

CLARENCE WOOD Fordham, Mo.
Football letter man, Track, Octette,
Boys' Glee Club, Basket Ball squad.
"He's thinking seriously of becoming
Caruso's successor."

IVAN FARMER Cameron, Mo.
Football squad, Boy's Glee Club.
"Who so findeth wisdom findeth
life."

MILDRED WILLIAMS Turney, Mo
Camp Fire Girls.
"She has accomplished in a quiet
manner what a number of us made a
great deal of noise in doing."

HELEN MALLORY Cameron, Mo.
Basket Ball squad.
"She should make a success of wield-
ing a little birch stick in the little
red school house."

JOE SWIGER Cameron, Mo.
Boys' Glee Club.
"His mental machinery refuses to
run although it never bothers him at
any other time."

C. H. S. - 1922

HAROLD BANGS Cameron, Mo.

Football squad, Track two years,
Captain 1922.

"His favorite animal is a camel—
(Campbell)."

MARIE MAIER Cameron, Mo.

Girls' Glee Club, Camp Fire Girls,
Home Ec. Club, Tank staff.

"Women sometimes deceive the lover,
never the friend."

HELEN HAINLINE Cameron, Mo.

Camp Fire Girls, Declamation.

"She's a mean job."

CHARLES GROOM Cameron, Mo.

Boy's Glee Club, Octette, Quartet.

"I neither smoke, drink or chew or
associate with those that do."

WILLIAM O'NEAL Cameron, Mo.

Basketball squad.

"Boy of many wonders."

MARY JULIA PORTER Asborn, Mo.

Girls Glee Club.

"An ideal wife."

MYRTLE EVERETT Winston, Mo.

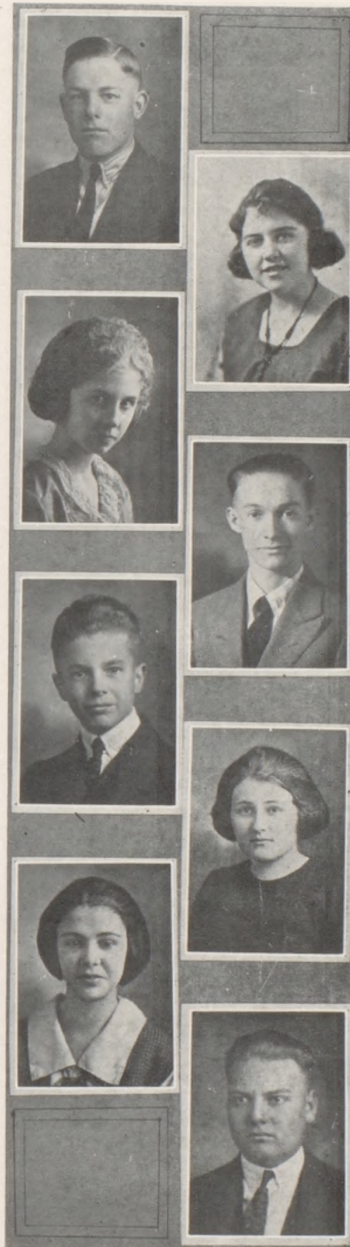
Girls Glee Club.

"She likes Hops son (Hopson)."

JOHN DIETSCHOLD Cameron, Mo.

Boys Glee Club.

"He studies hard but dates out."



◆-----THE MYSTIC-----◆



OLIN BIGGERSTAFF Cameron, Mo.
"Duty first pleasure last."

ERA LEEKA Cameron, Mo.
Girls Glee Club.
"A smile, a dimple and withal an earnest disposition."

CHRISTINE O'NEAL Cameron, Mo.
"E's are her speciality."

DOROTHY HARMON Cameron, Mo.
Pres. Camp Fire Girls, Class Sec. first semester.
"The Village Vamp."

JACK PENCE Cameron, Mo.
"Give a smile to every one you meet and they will give a smile to you."

GEORGE LEEKA Cameron, Mo.
Boys Glee Club, Track, Basketball Squad.
"Oh Morpheus, why forsake me even the days broad light."

ANNA ENTRIKIN Cameron, Mo.
Home Ec. Club.
"The noisest girl in school."

MINTA CAMPBELL Cameron, Mo.
Girls Glee Club, Home Ec. Club, Camp Fire Girls, Octette.
"A rare combination, a song bird and a track enthusiast."

HELEN QUIGLEY Cameron, Mo.
 Girls' Glee Club, Camp Fire Girls.
 "Small but mighty."

CAROLINE HOOK Cameron, Mo.
 Camp Fire Girls, Class Vice Pres.
 first semester.
 "A friend to every one no matter
 who it is."

HAROLD CASEY Cameron, Mo.
 "How does he get his Latin lessons?"

JOHN A. BOWMAN Cameron, Mo.
 Orchestra, Class Pres.
 "Interests are centered in the or-
 chestra. (Maxwell)"

ALMA SCHONK Cameron, Mo.
 Girls Glee Club, Octette, Home Ec.
 Club.
 "Only talks once and thats all the
 time."

CORNELIA ENSIGN Cameron, Mo.
 Camp Fire Girls, Home Ec. Club.
 "Quiet and friendly and a good
 sport."

RAYMOND ELROD Camerno, Mo.
 Boys Glee Club.
 "New York is his favorite (?) city.
 Oh the New York girl."

LYNN FILLEY Cameron, Mo
 Football squad, Orchestra, Boys Glee
 Club.
 "Interested in Senior girls?"



◆-----THE MYSTIC-----◆



MERRILL MURPHY Cameron, Mo.
Yell Leader, Annual Staff, Boys
Glee Club.

"Governed by Music."

RUTH JONES Cameron, Mo.
Camp Fire Girls.

"She spells all her dates with a J."

LOIS DOUGLAS Cameron, Mo.
Camp Fire Girls.

"She has quite a case—of Douglas
Chocolates."

REGINALD BUZZARD Cameron, Mo.
Football squad, Track.

"The small girl, the tall girls, they
all look the same to me."

KARL EVERETT
Football letter man, track.

"He loves———wireless."

MARY FIRKINS
"If she deviled the boys like she
deviled the eggs, she would———"

AMY LOOS Cameron, Mo.
Girls Glee Club.

"We don't dare let her loose."

GILES THEILMAN Cameron, Mo.
"He who thinks the most good, and
speaks the least ill of his neighbors."

◆-----C. H. S.-1922-----◆

WILFRED JAMES Cameron, Mo.

"Still water runs deep, at least so they say, and from what we know of him we find him that way."

REGINALD BUZZARD Cameron, Mo.

Football squad, track.

"The small girls, the tall girls, they all look good to me."

PEARL RIDER Cameron, Mo.

Home Ec. Club.

"Fair is she and fairer still, who wears a sunny smile with a will."

LaBELL EAVES Cameron, Mo.

Home Ec. Club.

"She dreams of sunny pleasures in far off skies, where there is a man with big brown eyes."

ARTHUR HALE Turney, Mo.

Glee Club.

"Cordial and courteous among the ladies."

LEWIS FROMAN Cameron, Mo.

Football squad, Basketball letter man, Boy's Glee Club, track.

"Wait till I grow up."

CORONA DILLENER Cameron, Mo.

Girls Basketball.

"Vamping the boys is her specialty."

WAYNE McCLURE

"Treat others as you would have them treat you."



◆-----THE MYSTIC-----◆



KARL EVERETT Cameron, Mo
Football letter man, Track.

"Here, there and everywhere—most-ly everywhere."

BLANCHE McDANIELS

Home Ec. Club.

"I love my teachers."

MARY FIRKINS Cameron, Mo.

"If she deviled the boys like she deviled the eggs, she would——"

HUGH GARNER

B. B. squad, Track.

"Silent as a sphinx."

J. W. BIGGERSTAFF

Track, Glee Club, Class Pres.

"As fast with the women as he is in track."

RUTH JONES

Camp Fire Girls.

"Jay" (s) bird."

VIOLA COOPER Mabel, Mo

"And still the wonder grew that one small head could carry all she knew."

EDWARD AMBROSE

Vice Pres.

"The Sheik."

◆-----◆ C. H. S. - 1922 -----◆

SOPHOMORE



◆-----◆ THE MYSTIC ◆-----◆



EMIL KERNS Cameron, Mo.
Boys Glee Club.
"One of the High School ornaments."

LOIS ALLEN Cameron, Mo.
Home Ec. Club; Basketball team.
Girls Glee Club.
"Not every girl looks good with bobbed hair, but——"

MILDRED WILEY Cameron, Mo.
Home Ec. Club.
"Wonder if she has a——anyway it's not too late yet."

RUI SELLE Cameron, Mo.
Girls Glee Club.
"Has adorable eyes, beautiful hair, and——well, that's enough isn't it?"

HELEN RHINEHART Cameron, Mo.
Home Ec. Club.
"Helen, Helen, where is thy heart?"

GILES THEILMAN Cameron, Mo.
"He who thinks the most good, and speaks the least ill of his neighbors."

LUCY SHAW Cameron, Mo.
Home Ec. Club.
"She loves her books, and that ain't all?"

RUTH DAVIS Cameron, Mo.
Home Ec. Club.
"As sweet as the candy she sells."

IRENE GOFF Cameron, Mo.
"No kin to "Squinty." "

EDITH SCHONK Cameron, Mo.
"Upholds all great principals, especially love—and snake charming."

C. H. S. - 1922

LILLIAN BUCHANAN Cameron.

Girls Glee Club, Tank staff,
Home Ec. Club.
"Would she make a good Farmer?"

MARGARET HUNTER Cameron.

Girls Glee Club, Orchestra,
Home Ec. Club.
"She drives a nice big Overland four, and gives us girls wild rides galore."

FLOYD TODD Cameron.

"Here's our old friend Floyd Todd who scarcely gives us girls a nod."

JOHN SIEVER Cameron.

"Heartbreaker—Girls Beware! But alas, to geometry he gives no thought or care."

EVA HATFIELD Cameron

Girls Glee Club, Home Ec. Club.
"A talented little Miss, a pretty little Sis," (My but you should know her)

THELMA JOHNSON

Home Ec. Club.
"Now I'll get sore, and love you no more, if you don't take me to my pa's front door."

GLEN WINBIGLER Cameron

Boys Glee Club, Orchestra.
"Not only is our ladies man, but also figures in the band."

ANNA MIDDLEAUGH Cameron

Girls Basketball squad, Home Ec. Club.
"Her favorite literature is the Photoplay, won't she make a keen star some day."

MARTHA SMITH Cameron

Girls Glee Club.
"She now keeps house for her prosperous brother, but some day I know she'll keep house for another."

MARY LOUISE ARNOLD, Cameron

Girls Glee Club, Octette, Class Secretary, Home Ec. Club.
"Her favorite color is White."



THE MYSTIC



PAUL PETERS

Orchestra.
"He reads about Eve in the Bible and he's never cared for Girls since."

ESTHER McPHERSON

"I am not always going to be so small."

MARLOWE STAFFORD

Glee Club, Vice Pres. 1st Sem.
"A second Henry Ford."

HOMER AUKER

Orchestra.
"Can play a horn, also knows how to plow corn."

HELENNE BOXX

Girls Glee Club.
"We think she's a vamp, but we never had any evidence."

IRENE MOON

Girls Glee Club, Home Ec.
"She sure shines for Andy."

RALPH FRY

Basketball letter man.
"Girls, girls I love them all."

ALBERT McCOMBS

"Is seldom at school, but the fact that he gets by proves that he's nobodys fool."

VENITA LEASK

Home Ec. Club.
"Cameron's only non-flirter."

PAUL CRAWFORD

Football squad, basketball squad, Class pres. Tank staff.
"A future promoter of Athletics."



FRANK GWINN

Cameron, Mo.

Orchestra.
"Fame awaits him at some turn of the road."

◆----- C. H. S. - 1922 -----◆

FRESHMEN



◆-----THE MYSTIC-----◆



- | | |
|---|--|
| <p>DONNIS BANGS Cameron
Girls Glee Club, Home Ec. Club.
"The only Freshmen blonde"</p> | <p>JULIA DIVEN
Home Ec. Club.
"She comes to school to learn."</p> |
| <p>EUNICE CAROLL Cameron
"Stately as a freshmen can be."</p> | <p>HELEN BALLINGER
Home Ec Club,
"So small that you might not
see her, but you can hear her."</p> |
| <p>MAXINE CAROLL Cameron
"A duplicate of her sister."</p> | <p>ELIZABETH BECKNELL
Home Ec. Club.
"A freshman rose."</p> |
| <p>FLORENCE CRALL Cameron
"If Roy should deceive her do
you think Clarence Wood."</p> | <p>W. D. CROW
Orchestra.
"A second Henry Clay."</p> |
| <p>MARIE BRAND
Home Ec. Club.
"As quite and shy as a Fresh-
man should be."</p> | <p>MORRIS BLACKETER
"He is going to to be a great
basketball star too (someday)"</p> |
| <p>ELBER BAKER
Basketball squad.
"A real cut up with Freshmen
girls."</p> | <p>TOM CHAPMAN
Class Secretary.
"He can draw pictures, water
and flies."</p> |
| <p>CLARK DECKER
"Yes, girls he has a Ford."</p> | <p>ROBERT Chennoworth
"Absorbs Latin and Algebra
like a sponge does water."</p> |
| <p>ESTER DUNNINGTON
Home Ec. Club.
"Always quite willing to learn."</p> | <p>CHARLES BAKER
"Comes to school to have a
good time."</p> |
| <p>PEARL CALEY
Home Ec. Club
"Modest and shy."</p> | <p>CARROL CANTHORNE
"Loves his Algebra."</p> |
| <p>MARY AUTEN
Girls B. B. squad, Home Ec.
"Full of life and pep."</p> | <p>ESTER BORDERS
"Ask her if she knows a boy
named Wayne."</p> |



HERBERT GALE

Orchestra
 "Quite, gentlemanly and friendly."

JAMES KLEPPER

B. B. squad.
 "A miniature of his famous brother."

ELLSWORTH DABLER

"Disappointed in love, his Irene is anothers."

OTIS JACKSON

Football letter man.
 "Cupid made himself mighty popular with certain senior girls."

JOHN JACKSON

Football letter man, Captain elect for 1922 and 1923.
 "A small man with great ideas, a darn good sport."

MARCELINE FROST

Home Ec. Club, B. B. squad.
 "We all loved her before she bobbed her hair."

RUSSELL FORE Turney, Mo.

"Fore."

SARAH BONER

Home Ec. Club, B. B. squad.
 "Smiling Sarah."

EILEEN JAMES

"A Modern Flapper."

RUTH BRATTON

"The Chaperon."

GALE MAPES

Home Ec. Club, B. B. squad
 "Always keeps her temper in Basketball."

WILLIAM FREE

"The most popular man in town."

HAROLD MATTHEWS

"Gone but not forgotten."

ELSIE McCULLOUGH

Home Ec. Club, Glee Club, Girls Octette.
 "A second Mary Garden."

GUY LAUGHLIN

"Fair and warmer."

IRENE CALDWELL

"To Arthur I Hale."

MAUDE JACKSON

Camp Fire Girls, Class Sec.
 "Loyal, honest, consistent in all her efforts."

HELEN GILCHRIST

Camp Fire Girls, Vice-Pres.
 "Has been able to mingle her work and good times together."

RUTH HARRIS

"Always late and never in a hurry."

GRACE LEEKA

Home Ec. Club.
 "She has carried on her work in a manner that predicts success."

NINA LEEKA

Home Ec. Club.
 "Has a sunny disposition that is impossible to correct."

◆-----THE MYSTIC-----◆



KATHERINE ROBINETT, Turney
Home Ec. Club.
"Takes more interest in the
Seniors than any Freshmen."

GEORGE McWILLIAMS
"He's going to be an agricul-
tunist if he lives long enough."

RANDALL REED
"Merely on of the intelligent
'Freshies.' "

LAWRENCE McGUIRE
"Caught tied to an apron
string."

HAROLD McVICKER
"A little louder please."

ROY PARKS
Football squad, track.
"Fears women worse than
death."

VERL BAILEY
"An all-star basketball player"

ELIZABETH PARTIN
Home Ec. Club.
"Just as nice as she looks."

DOROTHY MULLENIX
"Sweet and amiable."

PAULINE McWILLIAMS
"She will be an intelligent
Senior some day."

GEORGIA MULLENIX
Home Ec. Club.
"She loves her teachers."

VIRGINA MIDDAGH
"You can't judge a book by its
cover."

GRACE SCHLIECHER
"Her middle name is study."

CARROLL RUSSELL
Class Pres, Tank staff.
"He is undecided whether he
will take up civil engineering,
revise Hamlet, hang wall paper
or sell insurance."

LOIS McHENRY
Home Ec. Club.
"Can boil water without burn-
ing it???"

MARY FRANCES MILSTP
Home Ec. Club.
"There's six of us thinkin' of
roasts, but we are unable to
think of a proper one."

ETHEL NICHOLS
Home Ec. Club.
"Can beat her sister baking
cakes."

HELEN RHINEHART
"One of the sort everybody
likes."

MADLYN QUELL
She certainly can tickle the
ivorys"



ROLLA SLOAN

"Has hysterics during the 5.h period."

ALVA STUCKER

"A steady boy with serious intentions."

NELLIE SCHUELE

Home Ec. Club.

"Quiet and industrious."

PAULINE SLOAN

"Loves her books and teachers."

HELENA SCHEULE

"Ask her, She knows."

CATHERINE SCHEULE

Home Ec. Club.

"A sister of Helena, nuff said."

FANNIE STRICKLAND

Girls Glee Club.

"A musician, but too thuid to acknowledge it."

DORTHY SURMAN

Home Ec. Club.

"A true Freshman. Where is my lipstick."

MILDRED STEWART

"What would I be without my cosmetics."

JOHN SPRAGG

"Candidate for presidency of the 8th hour."

LOUISE SIEVER

Girls Glee Club.

"It is said that she, is a school m'am to be."

FAYE STILFIELD Turney, Mo.

Girls Glee Club.

"Never idle a momet."

FERN STUBBLEFIELD

"Silence is golden."

LOCKWOOD SIMMONS

"A coming basketball star."

◆◆◆◆◆ THE MYSTIC ◆◆◆◆◆



ROBERT WILLET Lathrop, Mo.

"Willet ever be a Senior."

ARNOLD WOLFE

"A typical movie villan."

HAZEL WARD

Home Ec. Club.

"Don't go to a ward school, but big enough anyway."

EARL OSBORN Fordham, Mo.

"Osborn from Fordham, and attends school at Cameron."

HELEN WILLIAMS

Home Ec. Club.

"Dashing and energetic, especially when the men are around"

NEVA WIGLE

Tank Staff, Class Pres.

"Young, very young, and a Freshman—but a few Seniors don't care."

FOREST WISE

"As 'Wise' as he looks—but it depends upon who he is looking at."

VIRGINIA WITT

Home Ec. Club.

" 'Jennie' is as witty as her name, in the full sense of the word."

ETHEL SWANSON

! ? ? "You never can tell."

DALE WILEY

Track.

"A modern Hercules among the fairer sex."

CHARLIE THOMAS

"He may be heavy—but then, wonderful actors are sometimes heavy."

◆----- C. H. S. - 1922 -----◆

ATHLETICS



◆-----THE MYSTIC-----◆



Athletic Association Officers

- Morris MoonBusiness Manager
- Sherlock HibbsTreasurer
- Gayland LihartSecretary
- Donna HaganPianist
- John Byers
- Merril Murphy
- Esther Hootman } Cheer Leaders
- Jeanette Chapman }



W. J. LYLE
ATHLETIC DIRECTOR

His first year of coaching was a great success due to a wonderful personality, determination and love for his warriors. He played the position of quarterback for four years on a team undefeated in the M. I. A. A. Conference. He was all state quarter 3 years and captain of the all state two years. Also a member of the track team and basketball team of the same college. He received thorough training in the coaching department of the Illinois University, developing into a coach that understands the science and tactics of athletics, and knows how to control his men. We rest assured that "Jess" will brighten our trophy case.

FOOTBALL

Captain Billie Gilchrist led his team through a successful season this year. For two years Billie has played well at the position of guard, this year he was shifted to the position of tackle. Every coach in the conference had their eyes upon Billie throughout the season. They also acknowledged him as one of the most aggressive tackles in the conference.

Erwin Sweem was classed as the best quarter in the state. His educated toe, speed, dodging, accurate passing and head work was wonderful. His four years as quarter has helped to develop some powerful elevens. This gridiron warrior will be greatly missed in the 1922 lineup.

Edwin Crouch was one of our best halves. His ability to outwit the opponent, catch passes and plunge the line has made him a valuable man for the last 2 years. He was equally as good at the quarter position as at the half.

Dyre Campbell was one of the most aggressive ends in the state. His determination and weight made him a feared smashing end. The left wing of the line has been powerful during the past three seasons by Dyre's accuracy and consistency of playing.

Captain Billie Gilchrist led his team through a successful season this year. For two years Billie has played well at the position of guard, this year he was shifted to the position of tackle. Every coach in the conference had their eyes upon Billie throughout the season. They also acknowledged him as one of the most aggressive tackles in the conference.

THE MYSTIC



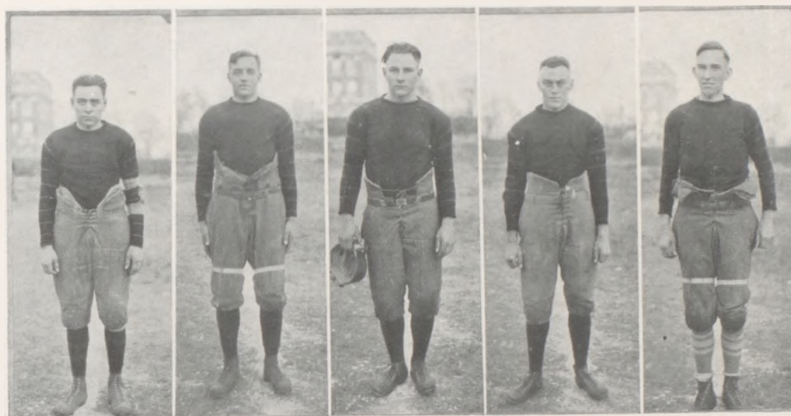
John Jackson's predominating pep and fearlessness was witnessed in every game. He is the best defensive player in the conference. The position of fullback was well filled by John. We rest assured he will lead his team thru a victorious season.

Sherlock Hibbs played a usual cool steady game at center or good guard. As center he snapped the ball accurately, and gave a good account of himself at guard. This was his first season and he developed into a good man.

George Silvius was another warrior worthy of fame. No man fought harder than George in a game. He was 'there' when it came to opening up a hole. At fullback he was a gain lugger of the pigskin. His tackling thrilled the spectators.

Holding the position in the center of the line against heavier and more experienced opponents was the honor due Choppie Casteel. In spite of waddling like a duck when in pursuit of a runner, and eighth hours, Choppie developed into a first class center. Choppie in every game was noted for his indomitable pep and fight. This is Choppie's last year.

Everett Byers passed the ball well as center and fought hard as guard. He was found ready to play at any time. Altho this was his first and last season in C. H. S. he showed lots of fight and displayed the old Cameron football spirit in the game.



Clarence Woods 170 pounds made him a valuable man as tackle and a great asset to the line. Clarence always played a hard and fierce game and could be depended on to be on the job throughout every game. Woods is only a Junior, so much is expected of him in the future.

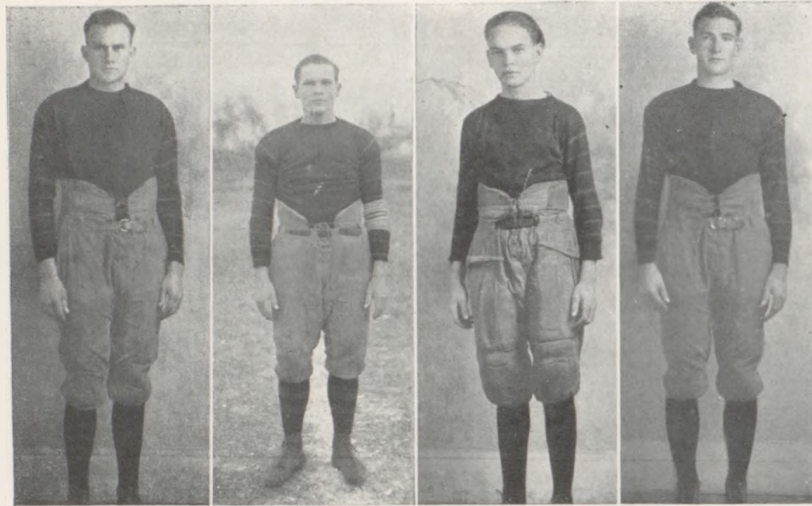
Toad Parks was one of Cameron's best men. For the last two games he has worked well at end. This year he played a good heady game. At times during the season he pulled sensational plays by nabbing a pass and making a touchdown. Toad will be seen in the 1922 line-up.

Otis Jackson's shifty broken field running, sure tackling and wicked nabbing of passes was a sensation in every game. He understands the art of the game and makes use of it with his speed and power. He will be seen upon the gridiron again in September.

Doak McKee held his position as guard well for two years. Though handicapped early in the season by a fractured knee, he played a good steady game later in the season. Opening or plugging holes was his speciality. He will be in the next year lineup.

Ralph Fry made his first letter this year. He proved to be a dependable aggressive man at end. Ralph's six feet in length was of much benefit to him when thrown under the advancing interference of the opponents. Ralph will tog out in the black and old gold again next fall.

◆-----◆ THE MYSTIC -----◆



Clyde Lewis four years on the team has weighed heavily on the scales of scientific football. His football career has been hampered by many misfortunes such as a wrenched ankle, a fractured jaw, smallpox and this year a fractured shoulder. His force on the team was greatly missed this year but his boosting, and loyal spirit helped to make the team a success.

Paul Buzzard won his first C this year at left guard. Last fall he came on the football field to make a football player of himself and he did. For there was never a guard gained through him during the entire season. Paul is considered as a tower of strength in the line.

Carl Holland was one of our best halves considering his weight. He proved his ability in many a game. His determination to succeed in a game proved a great asset to him. The 1922 line-up will find "Skinney" a powerful factor.

Carl Everett as a tackle and end was a good consistent player. He could be depended upon to deliver the old fight at any time. Carl was hampered much this season by blood poison in his knee, but Carl will be back next year making up for lost time.

◆----- C. H. S. - 1922 -----◆



Top row left to right--Reginald Buzzard, Bud Wolfe, Bangs, Tomlin, Filley, J. Byers, Lewis, Campbell, Fry, McKee.

Second row left to right--Carl Everett, Johnnie Jackson, Geo. Silvius, Ralph Parks, Otis Jackson, Ed. Crouch, Coach Lyle, Paul Buzzard, Gilchrist, Sweem, Woods, Casteel, E. Byers.

Third row left to right--Holliday, Hibbs, Froman, Holland, Gwinn, Wells, Crawford, Bennet, A. Crouch, Roxie Parks, Ivan Farmer.

THE MYSTIC

Review of Football Season

The opening of the season was with Maysville. In this game Coach Lyle tried out many of his inexperienced men, preparing them for the hard games to follow. This was a good game and the final score stood 19 to 0 in favor of Cameron.

Kansas City Central came to Cameron for the second game of the season. The final score was Central 34, Cameron 7. The big contrast between City and Country training was very noticeable in this game. Central scoring 28 points in first half. Cameron 0 in first half. Cameron 7; Central 6.

The Cameron eleven went to Carrollton and played a rather close game. Cameron winning 20 to 7. Several injured men hindered the Cameron squad to a certain degree. Carrollton scored their only touchdown on a fake not being able to gain thru the line or around ends. This game began to get the Cameron squad into their regular stride for the games which were to follow.

Next Cameron went to Lathrop and met the old opponenets which always fight Cameron so hard. This game was a passing game on the part of Lathrop and line plunging, passing and end runs on our part. The score stood Cameron 28 and Lathrop 0 when the final whistle blew.

Central at St. Joseph was the next visit Cameron made. Central fought hard the first half and scored one touchdown. Cameron failed to score but in the second half the Cameron eleven started with renewed energy and within two minutes after starting Cameron had scored one touchdown. This was repeated until the final score was in favor of Cameron 28 to 7.

Chillicothe came to Cameron to defeat our squad but after the first five minutes of play they changed their mind, Cameron having scored one touchdown. From that time on Cameron scored at will until the final whistle blew leaving a score of Cameron 34; Chillicothe 0.

Trenton, the game for the championship was the sensation of the season. A special train carried the Cameronites to the scene of battle. There they saw one of the best football games two high school teams could possibly play. Cameron neared the goal line several times but failed to put the pigskin across. Trenton scored one touchdown and tho we feel as many others that we should have won, we did not.

Couch Collins of Liberty came to Cameron for the Thanksgiving game. Though this was a hard game, Cameron won by three touchdowns and closed the season well.



I

Erwin Sweem, Captain of the five,
Had all forwards skinned alive.
'Twas his last game, so they say,
But many a time he saved the day.
Cameron owes a lot to such a man,
Who fought as only a warrior can.

II

Vernon Todd was a guard, you know,
Gee whiz! You ought to see him go.
He stuck to his man like a postage stamp,
Where his man stood, right there he'd
camp.
Come on five, now, bring 'em out,
For Vernon Todd, he's a good old scout.

III

There was another guard full of fight,
Who clung to the ball with all his might.
He'd crouch, he'd leap, like a panther bold
I've often heard the story told.
Can't you guess? The man's Paul Buzard.
Come on boys, he's always on the guard.

IV

Cleo Brown, another guard you know,
Was full of pep and "rarin'" to go.
He was mean on blocking the forward's
shot,
And many a goal from the center he got
Fast and quickly he dodged about,
Stopping opponents on their goal route.

◆-----◆ THE MYSTIC -----◆



V

Ralph Fry, of glorious form and fame,
Surely could play a wicked game.
He'd run and jump, and gladly glide,
And sometimes on the floor would slide,
But just the same he had the gall,
And nearly always had the ball.

VI

Ralph Parks, a forward, was sturdy and
strong,
Hardly ever a shot at the basket went
wrong.
Wherever they wanted him, there he was,
When he ran he made the air just buzz.
Holler for all you're worth for him,
He's full of pep to the very brim.

VII

We owe another worthy man, too,
Credit for the times he pushed the ball
through.
This was Lewis Froman's first year on
the team,
And the ball he played was certainly
mean.
He always worked hard when in a game,
And never failed to accomplish his aim.

VIII

"Jess" Lyle, coach of the Cameron
quintet,
Is the best old sport that you ever met
And is of the type that never gives in.
To own such a coach the school feels
proud,
When talking about real athletes he's
in the crowd.

THE MYSTIC



ELSIE MUDERS

Guard

Elsie and that famous grin of hers kept up the fighting spirit of our girls many a time. No forward could get by her. She guarded the tall one's, the small one's, the fat one's and all equally well. We are glad we will have her for next year.

LOUISE REMPIER

Forward

Louise made the team the first year she played, due to the skill and rapidity displayed when she put the ball thru the basket. Practice made perfect and we're sorry to see Louise leave this year.

ESTER HOOTMAN

Guard

When Ester entered a game she played basketball from the time the whistle blew in the first tip-off until the game was over. She was faithful and consistent throughout the whole season and is proud of the letters and gold trophy she wears.

CORONA DILLENER

Forward

Corona will be one of the mainstays for C. H. S. next year. She has received some good experience that ought to count for the good of the team. She is a good shot and uses much team work.

LOIS ALLEN

Forward

Lois is another player that will be back for old C. H. S. next year. She is one of the many wonders that is not yet quite developed. She was always out to practice, and her height often proved an asset to the team.

ATLA CASE

Center

Atla came here just in time to lead our girls to victory. At the Maryville tournament she received the Captaincy for all Northwest, which is an honor that only few receive. She will be here next year.



GIRLS BASKETBALL

The Girls Basketball Team was more successful this year than ever before in the history of the school. Having a high percentage, they were allowed to participate in the N. W. State Tournament, consisting of the best teams in this part of the State. The girls proved their superiority and won the silver loving cup. Their success was due to hard, consistent training, together with the wonderful coaching ability of Supt. A. C. Gwinn. Untiring in his efforts he inspired a thorough knowledge of the game into the team.

◆-----THE MYSTIC-----◆



The 1922 Track prospects are looking splendid. Cameron Track Team has participated in the Trenton, Liberty, and a few meets at home. They have been very fortunate this season, and have secured several gold, silver, and bronze medals. at Trenton, Missouri, they only lacked one point of taking second place, which if they had won would have brought the runner's up cup to Cameron.

The Team had a dual meet with Chillicothe and intends to take part in the Wesleyan and Maryville meets before the season closes. It is the desire of this team to leave several loving cups for our Trophy case.



— C. H. S. - 1922 -



Organizations

◆◆◆◆◆ THE MYSTIC ◆◆◆◆◆



R. T. Z.

Here's the merriest, peppiest group of girls in the whole wide world; they are very loyal to all school activities. They aided the Girls' Basketball team by selling candy. The R. T. Z.'s have enjoyed a very successful school year.

Dorothy Brown, Pres.
Lois Smith, Vice Pres.
Mary Bridges, Sec.
Pauline Davis
Esther Hootman, Sec.
Jeannette Chapman
Mildred Downing
Eva Price

Margaret Witt
Lois Lawson
Fairie Jones
Bessie June Assel
Doris Jean Maxwell
Mildred Blacketer
Cecyl Wiley



T. O. W.

This society is a new one but the drive and enthusiasm extended during the year proves that it is worth while. The purpose of this society is to bring closer friendship among the Senior boys; to boost school activities, and to have a real good time. This society is exclusive to the Senior boys. The regulations of the constitution and by-laws are few but powerful.

OFFICERS FIRST SEMESTER

Erwin Sweem—Grand Goblin
 Clyde Lewis—Noble Goblin
 Dyre Campbell Wizard
 Billie Gilchrist—Grand Guard
 Wynne Casteel
 —Noble Guards
 Sherlock Hibbs

Vincil Baldwin
 Cleo Brown
 Sidney Brown
 Paul Buzard
 Omar Buzard
 Everett Byers
 John Byers
 Dyre Campbell
 Wynne Casteel
 Geo. Cline
 Clifford Constance
 Edwin Crouch
 Billie Gilchrist
 Clay Gwinn
 Sherlock Hibbs
 Joseph Holiday
 Clyde Lewis

OFFICERS SECOND SEMESTER

Sherlock Hibbs—Grand Goblin
 Edwin Crouch—Noble Goblin
 Joseph Holiday—Wizard
 George Silvius—Grand Guard
 Morris Moon
 —Noble Guards
 Paul Buzard

Gayland Linhart
 Jerome McCulley
 Wilbur Moore
 Morris Moon
 Herbert Morris
 Harold Munsell
 Gerald O'Laughlin
 Raymond Peck
 Geo. Silvius
 Ted Silvius
 Donovan Simmons
 Erwin Sweem
 Vernon Todd
 Haywood Walker
 Lynn Wells
 Paul Witt

◆-----◆ THE MYSTIC -----◆



Camp Fire Girls

One day in November twelve of us Juniors organized a Camp of Five Patrol. We have grown in spirit and increased our membership to a staunch and mighty twenty.

We have a very competent guardian, Mrs. Earl Davis and her assistant Miss Georgia Amick.

We are all working hard to secure honors. We help the poor and try to do everything that Camp Fire promotes.

Pres. Dorothy Harmon

Sec. and Treas., Isabelle Edie.

Sport Editor, Helen Hainline.

Sergeant at Arms, Caroline Hook.



BOYS GLEE CLUB

The Boys Glee Club, under the direction of Miss Sommerville have been doing splendid work which includes a quartet and octette. The club has certainly been a credit to old C. H. S. and we hope that the organization will carry on from year to year. The officers are as follows: Clyde Lewis, President; Vernon Todd, Secretary; Clarence Woods, Treasurer; Gayland Linhart, Business Manager.

THE MYSTIC



ORCHESTRA

Our orchestra this year is composed of nineteen pieces played by talented young people. At many entertainments given in our High School the orchestra has been called upon to furnish the music, which they did like professionals. They have given a few out-of-town concerts assisted by Miss Hainline the reader. Miss Sommerville, their director has devoted much time and patience to this organization and it is due to her efforts that such a fine orchestra has been made possible. The members have been consistent and enthusiastic in this organization, and we look forward to hearing the fine music that we have enjoyed this year.



GIRLS' GLEE CLUB

Our Girls Glee Club is the largest musical organization in the High School. There are 46 members who have been faithful in all meetings and taken part in the plays and entertainments that have been given. Miss Sommerville, the director, has given much time to this organization and many of the girls expect to continue their voice work in college next year.

Lois Lawson, President.
Ceryl Wiley, Manager.
Mildred Downing, Secretary and Treasurer.

— THE MYSTIC —



ESMA SOMMERVILLE

To Esma Sommerville is due much credit for the success of the Orchestra, Glee Club and other musical features of C. H. S. By dint of hard work and much time she organized an Orchestra whose success alone shows her ability as a musical director.

Under her able direction, the Boys Octette took first place at Liberty. Miss Sommerville has wrought much for old C. H. S. and it is indeed appreciated by all of the students.

It is not every school that can boast of as good a Quartet as we have had this year. They have been a great help to old C. H. S. and at various times they gave programs in the assembly which were enjoyed by all. A few trips were made from time to time, and it is to be hoped that the Quartet will always be as successful as this year.



DEBATING

To her many activities Cameron High School has at last added that of debating. It has been suggested many times that we should participate in this particular field but it was not until this year that our dream has been realized and we have been able to compete with the other High Schools of Missouri in this particular activity.

Our talented team Mr. Wilbur Moore and Mr. Gayland Linhart, under the capable coaching of Miss Tomlin placed old C. H. S. on the Debaters map of Missouri. Of the five debates in which they participated they came forth from three of them with colors flying and victories for the school. The first debate at Benton High School of St. Joseph was quickly followed by the one at Hamilton and the third victory from Laredo gave the boys their letters.

By an unusual streak of misfortune we lost the Debate with Plattsburg and the final debate of the season was lost to Excelsior Springs.

Despite these two defeats we feel that our team altho our first can be ranked as one of the best in the state and we feel sure that it shall be remembered, honored and respected.

At present we are sure that this team has set a precedent and a standard and the future debaters are hoping that in the years to come this standard may never be allowed to fall.

◆----- THE MYSTIC -----◆



ANNUAL STAFF

- | | |
|-------------------------------------|--|
| Sherlock Hibbs, Editor in Chief. | |
| Paul Witt, Business Manager. | Everett Byers, Advertising Manager and Sport Editor. |
| Eva Price, Snap Shot Editor. | Dyre Campbell, Advertising Manager and Sport Editor. |
| Dorothy Brown, Snap Shot Editor. | Cecyl Wiley, Joke Editor. |
| Mildred Downing, Snap Shot Editor. | Sidney Brown, Joke Editor. |
| Jeanette Chapman, Literary Editor. | Merrill Murphy, Cartoonist. |
| Clifford Constace, Literary Editor. | |
| Mary Bridges, Literary Editor. | |



TANK STAFF

Vernon Todd, Editor in Chief.
Ted Silvius, Associate Editor.
Dyre Campbell, Sporting Editor.
Everett Byers, Assistant Sport Editor.
Ceyl Wiley, Local Editor.
Clyde Lewis, Business Manager.

Class Editors

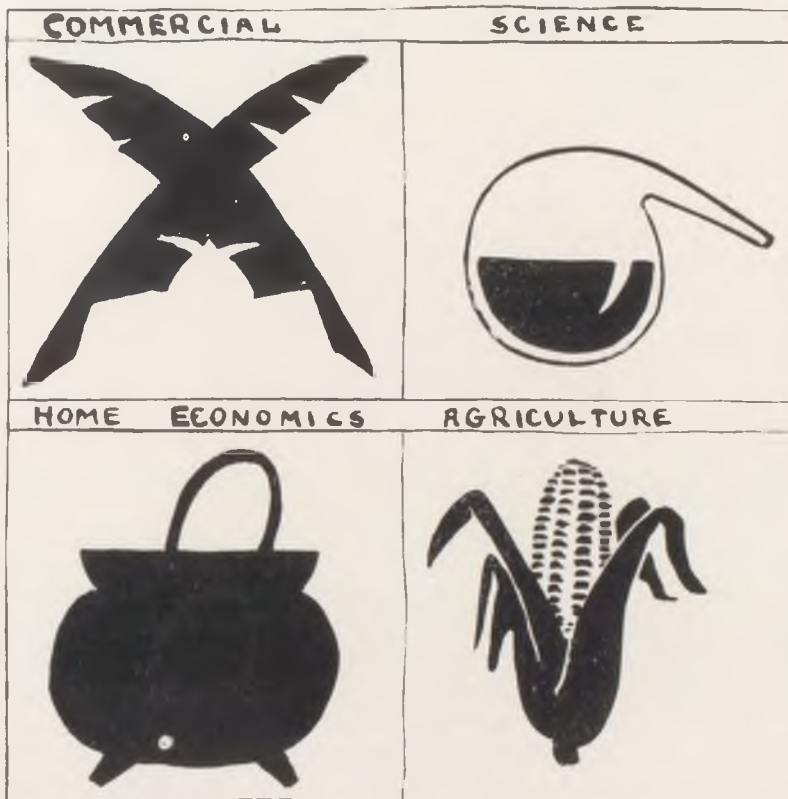
Freshmen, Neva Wigle and Robert
Chenoweth.
Sophomore, Lillian Buchanan and Paul
Crawford.
Juniors, Marie Maier and Jay Tomlin.
Seniors, Mary Bridges and Wynne
Casteel.



IN MEMORIUM

David Jack Pence was born in Kearney, Mo., in 1905. Here he lived until 4 years ago when with his mother he came to Cameron to reside. Jack was a Junior in our High School and was prominent and popular in all school activities.

His pleasant smile and winning personality shall long be remembered a host of friends.

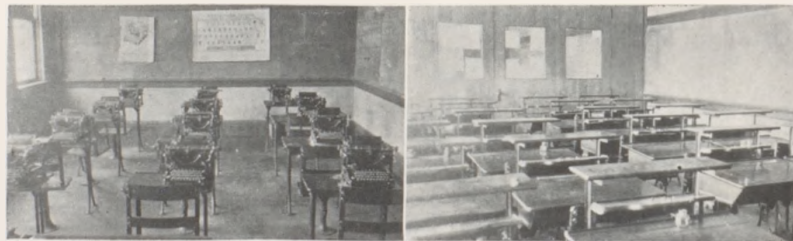


THE MYSTIC



THE SCIENCE DEPARTMENT

The Science Department of Cameron High is one of the most popular in the curriculum. The great demand for Science the past two years has made it imperative to have several divisions of General Science as well as a large section in Physics. This demand has been largely due to the fact that the courses in Science have been made as interesting and practical as possible. The dry, uninteresting part of Science, which has so long been the Bugbear of High School Students, has been minimized and the practical side emphasized. Every day problems and projects are taken up and especial attention is given to instructive field trips and to points of Scientific interest. Any student interested in the Science of life, would enjoy the Science work of C. H. S.



COMMERCIAL DEPARTMENT

Four years ago our commercial department was organized. At the very start the many students who enrolled took deep interest in their work in the various departments. Each year new equipment was added, until today the commercial department of the Cameron High School ranks with the best equipped and efficient departments in the State. Miss Ada Lee, who has been head of the commercial training, has done much to increase the interest of the many students in this work.

Many of the graduates are going to continue their commercial work by going to various business colleges.

Last year our typewriting and shorthand students were entered in the sub-district tournament at Liberty. The fact that we took first place in shorthand and second and third places in Typewriting, shows how well equipped our students were to contest against others.

We will enter this contest again this year at Liberty and hope to crown ourselves with greater laurels if possible than last year.

The courses offered in this department are: Shorthand, bookkeeping, typewriting, spelling and commercial arithmetic.



HOME ECONOMICS AND DOMESTIC ART

In teaching home making we turn to the activities of the home for our real problems. The facts of marketing, food composition, and the nutritive needs of individuals are all best taught through planning, marketing, and serving meals to a special group whose needs have been considered. The fundamental sewing processes, together with the use of the sewing machine and its attachments, can be learned on real garments or articles to be used at school or in the home.

Cameron High School is one of the thirty-eight schools in Missouri whose standards are high enough to meet the Federal requirements for Vocational Home Economics course.

The enrollment in this department was unusually large this year and the work was carried on with great success.



VOCATIONAL AGRICULTURE

The boys in Camreon High School take to Vocational Agriculture like young ducks do to water. Two teachers were required to meet the increasing demand for Smith Hughs instructions. From the beginning Vocational Agriculture has enjoyed an envious position in the school curriculum. This is due to the fact that only practical agriculture is taught. Practice demonstrations, shop work, field trips, stock and grain judging teams make this course very enjoyable to the average boy inclined toward Agriculture. He gets away from the monotony of the old regime, studies subjects which he likes and at the same time gets a practical course, one that will help him every day.

It is indeed gratifying to see so many students become interested in agriculture. They are beginning to realize that something must be done, better methods must be employed and larger yields will have to be obtained.

The average Farmer Boy uninfluenced by habit, is willing to give the new ideas and methods a trial.

Every High School student who is interested in Agriculture should include Vocational Agriculture in his list of Courses.

◆-----THE MYSTIC-----◆

Concensus of Opinion

The Most Popular Girl—Margaret Witt—Jeanette Chapman

The Most Popular Boy—Wynne Casteel—Donovan Simmons.

Prettiest Girl—Lois Lawson—Marie Meyer.

Handsomest Boy—Irwin Sweem—George Silvius.

Biggest Bluffer—Roland Clark—Wynne Casteel.

Biggest Flirt—Dorothy Brown—Eileen James.

Best Athlete—Irwin Sweem—Clyde Lewis.

Ideal Old Maid—Wynona Lawson—Mildred Dowling.

Ideal Old Bachelor—Bill McCullough—Pat Murphy.

Most Bashful Boy—Lockwood Simmons—Geo. Hopson.

Most Bashful Girl—Nina Johnson—Mildred Blacketer.

Ladies Man—George Cline—Vincil Baldwin.

Pres. 8th Hour Class—John Spragg—John Dietzschold.

Ideal Couple—Bill Free and Helen Mallory—Clifford
Constance and Eva Price.

Ideal Preacher's Wife—Alleyne Hale—Nellie Graeff.

Sour Grapes—Morris Moon.

Greenest Freshman—Wm. Free—Neva Wigle.

←----- C. H. S. - 1922 -----→

JOKES



◆◆◆◆◆ THE MYSTIC ◆◆◆◆◆

Bachelor—Congratulations, old top to your engagement to that southern lady. What sort is she?

Husband—Well, you see, we are really great contrasts.

Bachelor—Yes, I've heard that she is exceptionally smart and capable.

Here's my bill, said the surgeon. "Wish you would pay down \$100, and then \$25 a week.

"Sounds like buying an automobile," said the patient.

"I am said the surgeon."

I aint braggin' none, said charcoal Eph, ruminatively, but all I got to say, ef anybody's got a chicken kin outru me on some dark night, dat chicken am sure some sprinter. Eat a drumstick, Mistah Jackson.

Movie Diary

Monday—Saw "The Gulch," seven reels of thrill, 4 kilt, 2 wounded.

Toosday—"Three Gun Pete, the boy Bandit." Grate fighter, 14 kilt, nine wounded.

Wensday—"Percy's Perils," eighth instalment. Slick, 3 kilt, 1 wounded.

Thrusday—"The Lure," Punk pitcher. No killin, just kissin, 0 kilt.

Friday—"Duble feature day." "The Fightin' Parson," and "Bloody Bill."

Satday—"The Satan's Saw." Full of tries. 1 kilt, lots wounded.

Sunday—No movies. Swiped Pop's gun and went up town, kilt 2 dogs, 3 cats and 1 cow. Wounded red Myers thru the waste. In jale now. Too bad.

Gothamite—I understand the town you come from figures in a recent novel. Was the author born there?

Visitor—Yes, and if he ever shows up again he'll die there.

Caller—How much for a marriage license?

Clerk—Two dollars.

Caller—I've only got one.

Clerk—You're lucky.

Ted S.—Hey, don't shoot. Your gun isn't loaded.

George—Can't help that, the bird won't wait.

Corona—You know you would be just as happy if you didn't kiss me.

John J.—But do you suppose I am selfish enough to think only of myself.

"Do you enjoy hearing your wife speak in public?" asked Maurice. "Very much," replied Mr. Thomas. "It's a great relief to hear her making a long series of emphatic remarks, none of which has reference to my personal faults."

Paul Brown, (as ship was sinking) —"Captain, is there no hope—no hope whatever?"

Captain—None at all, sir, not the slightest.

Paul—Confound the luck! And I wouldn't eat any plum pudding at dinner because I was afraid of indigestion.

THE MYSTIC

CALENDAR

September

5. Every one back to the old grind.
6. Freshmen, more Freshmen. Most Freshmen. Football 3:15.
7. Coach Lyle tells 'em what's going to be. (3 cheers for Jess.)
8. Such groans from Football boys. (8th hour)
9. One week gone at last. Our schedule arranged.
10. Talk by Brother Davis. Lewis out of Football with broken shoulder. R. T. Z.'s initiate meow!
13. Glee Club organized.
14. Seniors organized.
15. Plans made for sale of Football tickets.
19. Officers elected for coming year. Girls order tams.
20. Pep meeting. Everyone ready for Maysville Friday.
23. Cameron 19; Maysville 0. Good start for Football season.
28. Brother Davis and singer have charge of assembly.
29. Mr. Thomas turns to a book-seller.
30. Wesleyan 23. Tarkio 7. Oh! you grade cards.

October

5. Debating Club Started.
6. Pep meeting for team going to Carrollton.
7. No game. Called off on account of rain.
10. Cameron and Carrollton game. Did we beat? Oh! you mud holes.
11. Pep meeting for victory over Carrollton.
12. T. O. W. organized by Senior boys.
13. Lyceum Course.

17. New members added to R. T. Z.
19. R. T. Z. hike to Osborn.
21. Cameron 28; Lathrop 0. Wesleyan 14. Rolla 7.
23. Drive for Lyceum Course.
24. Home Ec. tests.
26. Chillicothe 0. Cameron 334. Such celebrating.
27. And no "Walkout."
30. T. O. W. weiner roast. First Lecture course.

November

3. Junior program.
5. St. Joe Central 7; Cameron 28.
7. Boys leave for Columbia.
8. Clyde operated on.
9. Miss Lee sick with "flu."
15. High School night at M. E. Church.
16. Special assured for Trenton.
18. Cameron 0; Trenton 7.
21. Miss Lee and Miss Tomlin on sick list.
24. Thanksgiving. Cameron 28; Liberty 0. Wesleyan 0; Jewell 3.
25. Everybody hunts.
30. Silvius entertains Football boys.

December

4. Debating team wins from St. Joe. Tuesday Senior program.
- Friday Football banquet. Oh! what a good time.
12. Girls class games.
15. Orchestra program—King Lear pictures.
16. Hobo Day for C. H. S. Boys.
23. 1921 Graduates visit C. H. S.

— — — — — C. H. S. - 1922 — — — — —



THE MYSTIC

January

2. X-Mas vacation over.
4. Cameron girls 11: Turney 6.
6. Cameron beats Holt.
9. Teachers meeting. Oh! Xmas.
10. Football Boys get sweater.
11. Exams begun.
12. Vacation for some.
13. The unlucky day. Maysville beat Cameron. Second Semester.
16. Picture show in Agriculture room.
18. Home Ec. Classes begin lunchroom.
20. Dr. Sheldon gives talk in assembly.
23. B. B. girls go to Chilli.
24. Lecture Course.
25. Boosting for debate.
26. Jamesport defeated by Camero.
27. Cameron defeats Laredo in Debate.
30. Snow, snow—more snow.

February

1. Nothing happened today.
2. Population Charlie visits school.
3. Sophomores give program in assembly.
4. Liberty 18. Cameron 15.
7. Getting ready for Legion play—Katcha Koo.
10. Chilli Girls 9. Cameron Girls 14.
15. Glee Club entertainment.
16. Cameron 20. Excelsior 18.
17. B. B. Boys go to Tournament.
20. Report of Tournament in Assembly.
21. Miss Coons continues to go to the Postoffice.
24. Boys Quartet goes to Prairie town.

March

3. Breckenridge defeated by Cameron.
4. Trenton girls beat Cameroa by one point.
6. May Day Queen elected.
25. B. B. girls to Maryville. Preliminaries to Declamator.
27. Dick Munson whistles in Assembly.

April

3. City engaged a Steeple Jack to remove the Senior colors from the flag pole where they had been placed many months previous.
5. Death of Jack Pence.
6. Brother Howard and Mr. Jacks visits assembly.
17. Trenton Track Meet.
20. Octette Boys in assembly.
21. Liberty Day.
22. Liberty Track Meet.
24. Music and High Point cups were displayed.
27. G. A. R.'s program.
28. Chillicothe—Cameron Track Meet.

May

10. Last Lecture Course. Home Ec., Opera House.
12. May Day.

— C. H. S. - 1922 —



◆-----◆ THE MYSTIC -----◆

Wynne Casteel—(awakened by the study hall bell)—“Watch out boys, here’s Wabash crossing.”

Miss Piggott—“Billie, how many parties are there?”

Billie Gilchrist—“Only two, the Democrats and the—fools.”

Book Agent—“This book, ‘The Successful chicken raiser,’ will, ah—”

Head of House—“Nope! Don’t need it. All my children are boys.”

Miss Piggott—“There were four of these quiz papers exactly the same.”

Dale Wiley—“That’s what you call team work.”

Miss Herrin—“Compare III.”

Finis Ketchem—“III. Worse, Dead.”

Choir Leader—“I want all the women in the church to sing this first verse.”

Result—“A loud response broke forth.”

Choir Leader—“And all the men to sing the second verse.”

Result—“A loud response broke forth.”

Choir Leader—“And all the rest of you to sing the 3rd verse.”

Result—“The response was somewhat feeble.”

Many who kiss and make up, don’t like the taste of the “make-up.”

Irate Father—“Young man you were out after two last night, were you not?”

Ralph Fry—“No it was only after one.”

Vernon Todd—“How did you come out last night Irwin?”

Irwin—“Thru a window.”

Elbert—“I’ve been working a little lately, trying to get ahead.”

Miss Cameron—“Goodness knows you need it.”

“Bridget, these boiled eggs are perfect. You must stay and cook them forever.”

“Yez you wouldn’t like them that hard, mum.”

We used to be scared to death when a man reached for his hip pocket, nowadays—we are tickled to death.

Irene—“Why did you tip your hat to that waiter?”

Arthur H.—“Because it costs too much to tip him anything else.”

This is a cigar you can offer anybody, said the clerk.

Billie G.—“Thank you, I want one I can smoke myself.”

You can get all the “Scandal” you want out on West Third Street, and also West Fourth.

Stung

From the Richmond Times-Dispatch.

"Doggone it!" growled Spiffins.
"That's the last time I lend Jencks
my fountain pen!"

"What's he done; busted it?"

"No, but he's got the darned thing
into the habit of signing promissory
notes!"

Two Irishmen were standing in the
stern of a steamer in the English
Channel. Said Mike:

"Oi can't see how the captain foinds
his way across the channel at all.
Now, if we was goin' the other way
he'd only have to follow that whoite
streak o' foam there. But if ye go
up the other end o' the boat ye'll find
there's niver a mark to go by."

A man subject to epileptic seizures
was picked up unconscious on the
streets of New York and rushed to a
hospital, and when they took off his
coat one of the nurses found a piece
of paper pinned to the lining, upon
which was written: "To inform the
house surgeon that this is just a case
of plain fit—not appendicitis. My ap-
pendix has already been removed
twice."

The Father—You told me that he
was worth millions, and so I gave
him your hand, of course. Now that
you are married I find that he is as
poor as a church mouse. What did
you mean?

His Daughter—Well, papa, he was
worth that to me.

◆-----THE MYSTIC-----◆



----- C. H. S. - 1922 -----

PATRONIZE
OUR
ADVERTISERS



© B. K. & Co.

Idle Shirts

Idle Collars

Mallory Hats

Regal Caps

Coopers' Underwear

Glove Grip Shoes

Holeproof Hosiery

Bradley Sweaters

For men and women

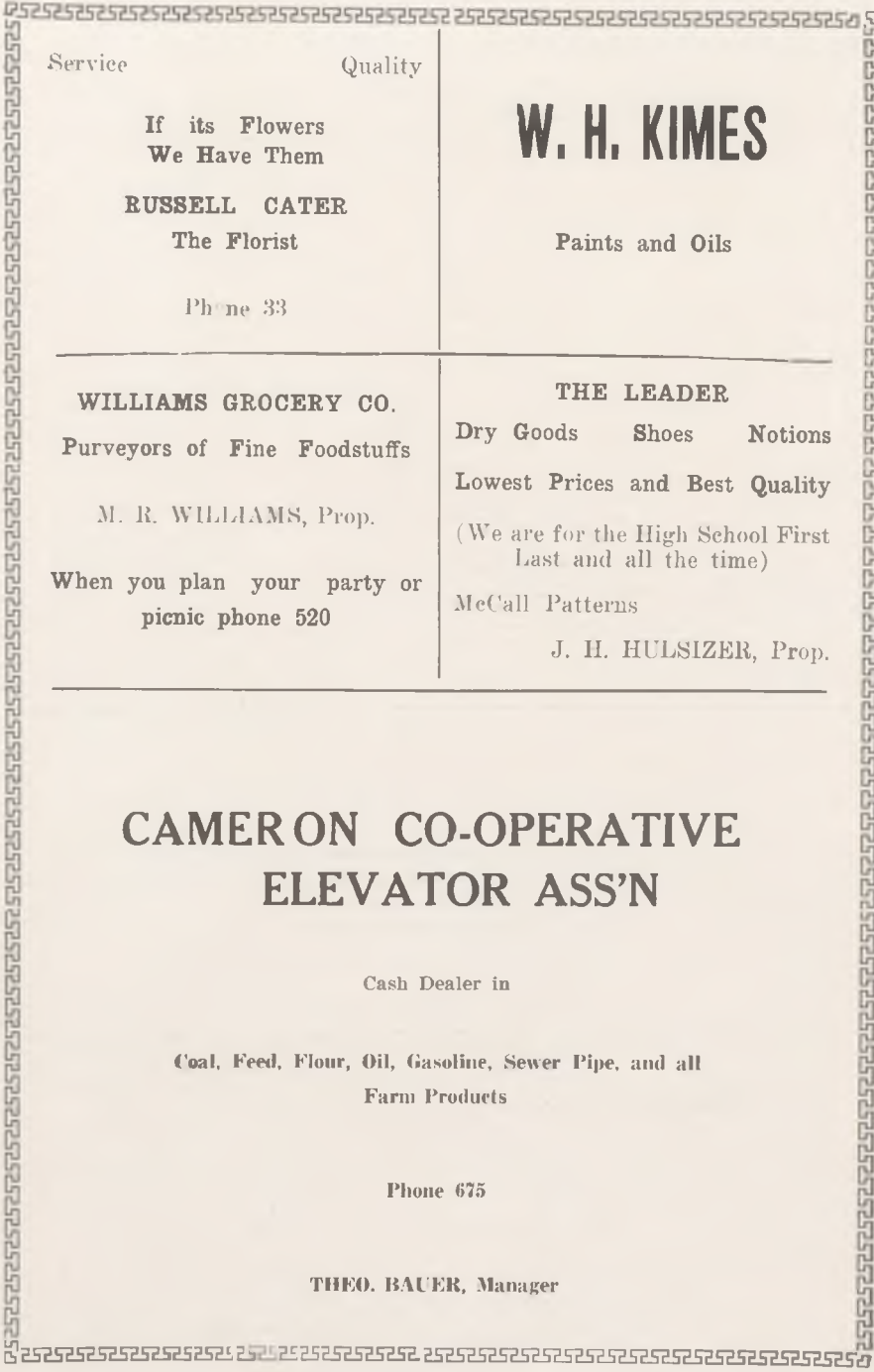
For men and women

Kuppenheimer
Clothes

Collegian
Clothes

Dillener Clothing Co.

CAMERON, MISSOURI



Service Quality

If its Flowers
We Have Them

RUSSELL CATER
The Florist

Phone 33

W. H. KIMES

Paints and Oils

WILLIAMS GROCERY CO.
Purveyors of Fine Foodstuffs

M. R. WILLIAMS, Prop.

When you plan your party or
picnic phone 520

THE LEADER

Dry Goods Shoes Notions

Lowest Prices and Best Quality

(We are for the High School First
Last and all the time)

McCall Patterns

J. H. HULSIZER, Prop.

CAMERON CO-OPERATIVE ELEVATOR ASS'N

Cash Dealer in

Coal, Feed, Flour, Oil, Gasoline, Sewer Pipe, and all
Farm Products

Phone 675

THEO. BAUER, Manager

CITIZENS STATE BANK

Cameron, Mo.

Capital & Surplus \$60,000.00

Geo. O. Wallace, Pres. James O. Wallace, Vice Pres. Claud Gilchrist, V. P. Harold L. Poynter, Cashier

Directors

Geo. O. Wallace, S. J. Sloan, W. L. Grant, Roger Williams, W. O. Watson, W. T. Egbert, Geo. P. O'Donnell, Claude Gilchrist

WHERE YOU HAVE THE SAY

Anything in the Clothing Line

PARRY & GORRELL

The hom of Hart, Schaffner and Marx Clothes

First Gentleman--You never object to your wife's having the last word?
Second Gentleman--No. I'm tickled to death when she gets to have it.

PRODUCE HOUSE

North Walnut Street

Phone 554

P. E. Kenney

PALACE BARBER SHOP

We Want Your Business,
Will Appreciate it, And
Give You First
Class Work

Give Us a Trial

Claud Wingate, Prop.

COLUMBIA



GRAFONOLAS



RECORDS

Always something new

LEIBRANDT

Your Jeweler

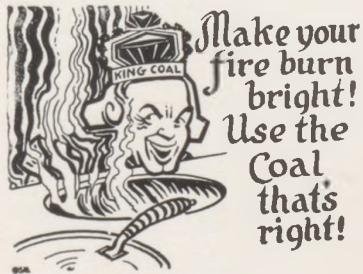
S. H. HOOK & CO.

Drugs, Books, Wall Paper, Win-
dow Shades, Paints and Var-
nishes, School Supplies

And

Sporting Goods, Victrolas and
Records

CORNER DRUG STORE



THOMAS FIDDICK

Feeds, Fuel and Ice
In Seasons

Prompt Delivery

Courteous Treatment

Telephone Number 77

South Cherry Street

CAMERON TRUST COMPANY

Capital \$100,000
Surplus \$100,000
Profits \$10,000

2 per cent interest on checking
Account

4 per cent on time deposits and
savings accounts

WE SOLICIT YOUR BUSINESS

A. J. ALTHOUSE, Pres.

I. D. COTTEY, Treas.

DO YOU GRADUATE?

If you do you will want to know that when you sit before the eyes of an audience that you are correctly dressed—That you have a feeling that every thing is right.

When you buy clothes or Haberdashery at Stucker's you will know that you are correctly attired even to the smallest details.

*We Make You
Satisfied*



C. N. STUCKER

"The Best of the Latest"



HOWARD & SON SAYS

“Any Old Kind of Shoes Will Do Going
Down Hill, But You
Want To Go Up”

And What Howard & Son Says is So

One of the most formidable rocks in the roads of success is the boulder of clothes-criticism. From the top of your head to the cuticle of your toes you should be dressed in a manner that will win admiration and ward off criticism. For a sure success foundation keep stylishly and comfortably shod.

COC

Howard & Son

Cameron

Missouri

◆-----◆ THE MYSTIC ◆-----◆



The Peach Tree

Raleigh S. Brown

WALKOVER
SHOES

PLACE
BROS.

THE HOME OF GOOD
EATS

Phone 291

W. N. DARBY
& CO.

Authorized Sales and Service

FORDS and FORDSONS

Ford
THE UNIVERSAL CAR.

Cameron,

Missouri

Sid Brown says the cabbage, the tomato, and garden hose had a race. Result—The cabbage came out a head, the tomato couldn't ketchup and the garden hose is still running.

Eddie Ambrose—"Miss Coons, I've planted a seed, do you think an apple tree will grow?"

Miss Coons—"Yes, in time."
Ed—"But Miss Coons, it was an orange tree I planted."

Teacher:—Why does a chicken cross the road?

Johnny—Because it has a fowl mind.

PLAIN PRICE MERCANTILE COMPANY

Two Phone 58

Dry Goods, Groceries, Shoes and Notions

Home of Phoenix Silk Hose
H. & P. Gloves and Corticelli Silk

Miss Herren--What is the metrical
form for the two feet?

Sherlock--Two feet is diameter.

Miss Herren--Yes, and for four
feet?

Harold M.--Why, that would be
quadrupeds.

Lois S.--I am glad you've broken
the engagement.

Sherlock H.--Thank you.

Lois S.--Will you send my letters
back?

Sherlock H.--No I thought I'd sell
them to a humorous weekly.

SANITARY BARBER SHOP

Come in, You're Next!

Four chairs working

Your patronage appreciated

D. L. CLARK, Prop.

WHITE WAY MARKET

Courteous treatment

Fish on Friday

LIVERS & WALKER

Phone 15

A. S. BROWN

Maker of

REAL PHOTOGRAPHS



Official Photographer for

The "Mystic"

Jewelry, Pianos and
Edisons

THE HOME OF POPULAR SHEET MUSIC

See our line of high grade Watch-
es, Wrist Wacthes and Jew-
elry before making your
Purchase

S. J. SLOAN

The Store of Quality



The School that places Students *"No Position,
No Pay"*
CHILlicothe BUSINESS COLLEGE
CHILlicothe, MO.



Dyre Campbell—"I've lived on vegetables for nearly two weeks."
 Everet Byers—"That's nothing, I've lived on earth for eighteen years."

First Pupil—"What does Hale sing in the glee club?"
 Second Pupil—"Ask Hale himself, he has the best opinion."

Mrs. Murphy—"Merrill, what is the matter, last month you had 'E' on your report card, in French and this month you have only 'M.'
 Merrill—"Well mother it isn't my mistake Mr. Jordan moved the boy who sat beside me."

Bill Gilchrist—"What is the only organ without stops?"
 Poppy—"I don't know."
 Billy—"A womans organ of speech."

A sign read—"Save the surface and you save all."
 Someone added—"So she powdered her face."

Teddie had a Ford-Mobile,
 One of the speedy kind,
 And everywhere the front wheels went,
 The rear wheels went behind.

THE ONLY SCHOOL

The Jackson University has about twenty points of difference and superiority, and it is the only business college in Chillicothe territory that stands out plainly and boldly above other business colleges. One of the school's points of difference is its willingness to accept your enrollment with the understanding that **your tuition money will be refunded should you ever desire to quit the Jackson University to attend any other college in Chillicothe territory.** Be sure to protect your educational interests by having literature sent to you before you cast your lot with any other school. Address—

WALTER JACKSON, Pres., Chillicothe, Mo.

Callahan's Drug Store

Drugs, Stationery and Toilet Articles

Soda Fountain in Season

"Sonora" Talking Machines

Your trade solicited

M. H. CALLAHAN

One Price

and that price is lowest, of this
you are certain when trading at
"Quality Corner."

E. A. DAVIS
GROCERY CO.

Phone 126

The New Series

—of—

The Good
MAXWELL

MOTOR INN

211 Walnut Dealers Phone 197

DENNY'S BARBER SHOP

First Class Barber Work

HOT OR COLD BATH

Your patronage appreciated

W. H. DENNY, Prop.

First Door South of Hook's

J. T. FRAZIER

Sheet Metal Supplies
and
Furnaces

HIGH GRADE GROCERIES

Courteous Treatment

Phone 51

A. C. WELSH

City Meat Market

Home of Fresh and Cured Meats

FRESH FISH ON FRIDAYS

Phone 49

HAGAN & HOPSON

Herbert Morris—"What is the height of your ambition?"

Eddie Crouch—I don't know for certain but she comes about to my shoulder.

Miss Herrin—"How do you decline men?"

Eva Price—"Most women don't decline men, they accept them."

—ED BYERS—

Dry Cleaning and Tailoring
Old Postoffice Building

Phone 23

Cameron Missouri

ELECTRIC SHOE SHOP

Cameron, Missouri

First Class Shoe Repairing

Modern Equipment

Ladies' and Gent's Shining Parlor

G. S. DANIELS, Prop.

OFFICERS

N. S. Goodrich, President
W. G. Sloan, Vice President

H. B. Cooper, Vice President
D. G. Brillhart, Cashier

ESTABLISHED 1878

Farmers Bank of Cameron

Cameron, Missouri

Safety Deposit Boxes For Rent

Capital and Surplus, \$125,000

BOARD OF DIRECTORS

John A. Livingston F. B. Klepper N. S. Goodrich H. B. Cooper
T. L. Wiley W. G. Sloan J. N. Ellis J. C. McComb C. A. Gross

J. E. NICHOLS

Coal Feed, Sewer Pipe, Septic Tanks. All kinds of Chick Feed

BLANCHFORD'S MILK MASH CALF MEAL

Phone 25

In one of the palatial homes of the new rich, a man sat before a blazing fire, a cigar between his teeth, a lizeur at his elbow. His friend sat opposite likewise fortified. The host was bewailing the enormous cost of keeping

his son at college. "Such expenses!" he cried. "And the worst of all is the languages." "Languages?" repeated his friend. "How's that?" "Well," said his host, "there is one item in the bill which runs, 'For Scotch \$250.'"

THE HIGH SCHOOL GIRL

Can Supply All Her Needs at

Cameron Style Shop

To keep the Memory of School Days—Your Portrait
For Your Classmates

Be Photographed this year on your Birthday

LUCE STUDIO

F. E. LUCE, Prop.

Cameron, Missouri

CAMERON MOTOR CO.

A Full Line of
Tires, Tubes, Batteries and
Accessories—Storage

It is sad to see family relics sold
at auction, but the most painful thing
under the hammer is generally one's
thumbnail.

The Kansas City-Western Dental College

High School Men Especially Desired—Address. Dr. C. C. Allen,

Dean, or Dr. E. J. Rinehart, Secretary-Treasurer.

Corner 10th Street and Troost Avenue

Kansas City, Missouri

GREEN MILLINERY

Embroidery Threads

Gossard Corsets

DR. L. W. DOOLEY

DR. E. E. TALBOTT

Osteopathic

Physicians

Phone 672

First National Bank

In Every Department of Banking the First National Bank is Prepared
to Serve You in a

SATISFACTORY MANNER

PLUMBING and HEATING

ALL WORK GUARANTEED

Phone C51

Henry H. Johnson

Dr. Leftwich

DENTISTRY

Phone 158

Cameron, Mo.

J. W. POLAND

Furniture

Rugs

and

Linoleum

Y. M. C. A.

Building

DR. LIZZIE CLAY

Osteopath

102 South Cherry Street

Cameron, Mo.

KNOCH & MONTGOMERY

Good Things to Eat—Quality

and Service Our Specialty

Telephone 700

Economy

Grocery

BURGER IDEAS
BUILD DISTINCTIVE YEAR BOOKS

IDEAS that lift your annual above the others, are the results of painstaking thought, effort and experience

We conceive and develop ideas in designing and engraving for the definite purpose of enlivening your annual

EXPERIENCE, MASTER CRAFTSMANSHIP AND THE PERSONAL COOPERATION IN A BURGER CONTRACT do not add to the price you pay but they do add materially to your finished book

Write us for IDEAS

BURGER ENGRAVING CO.

Boston Bldg. Kansas City.



SEE

O. J. MUNSELL

PLUMBING & HEATING

"Front Ranks"

"Rainbow Cast"

Furnaces

Pipe Pipeless

Cameron Missouri

Phone 47

OWEN & MURRAY

The Rexall Store

Drugs

Books

Kodaks

Wall Paper

Shades

and Paints

Soda Fountain in Season

RICHELIEU

Stands for—

Quality

Satisfaction

Excellence

BUCKLES THOMPSON

Grocery Co.

Phone 1

THE ROYAL THEATRE

The House of Good Photoplays

Call 733 for arrangements

for line parties

A. E. JARBOE, Mgr.

Cell-Mates

Compliments

Cell-Mates

Hibbs
DRY GOODS & CO.

WHEN IN NEED OF

HARDWARE-IMPLEMENTS-HARNESS

CALL 63



Deering and McCormick Lines



THE WINCHESTER STORE

O. E. CONNELL

Where Your Money Buys the Most

ESTABLISHED 1905

The Daily News-Observer

Consolidated Sept. 15, 1920

B. B. WITT, Editor and Proprietor



PRINTERS and PUBLISHERS



WE PRINTED THE "MYSTIC"

LET US PRINT FOR YOU

