



THE
MYSTIC

1926







The Mystic for 1926

The Mystic

1926

Published By

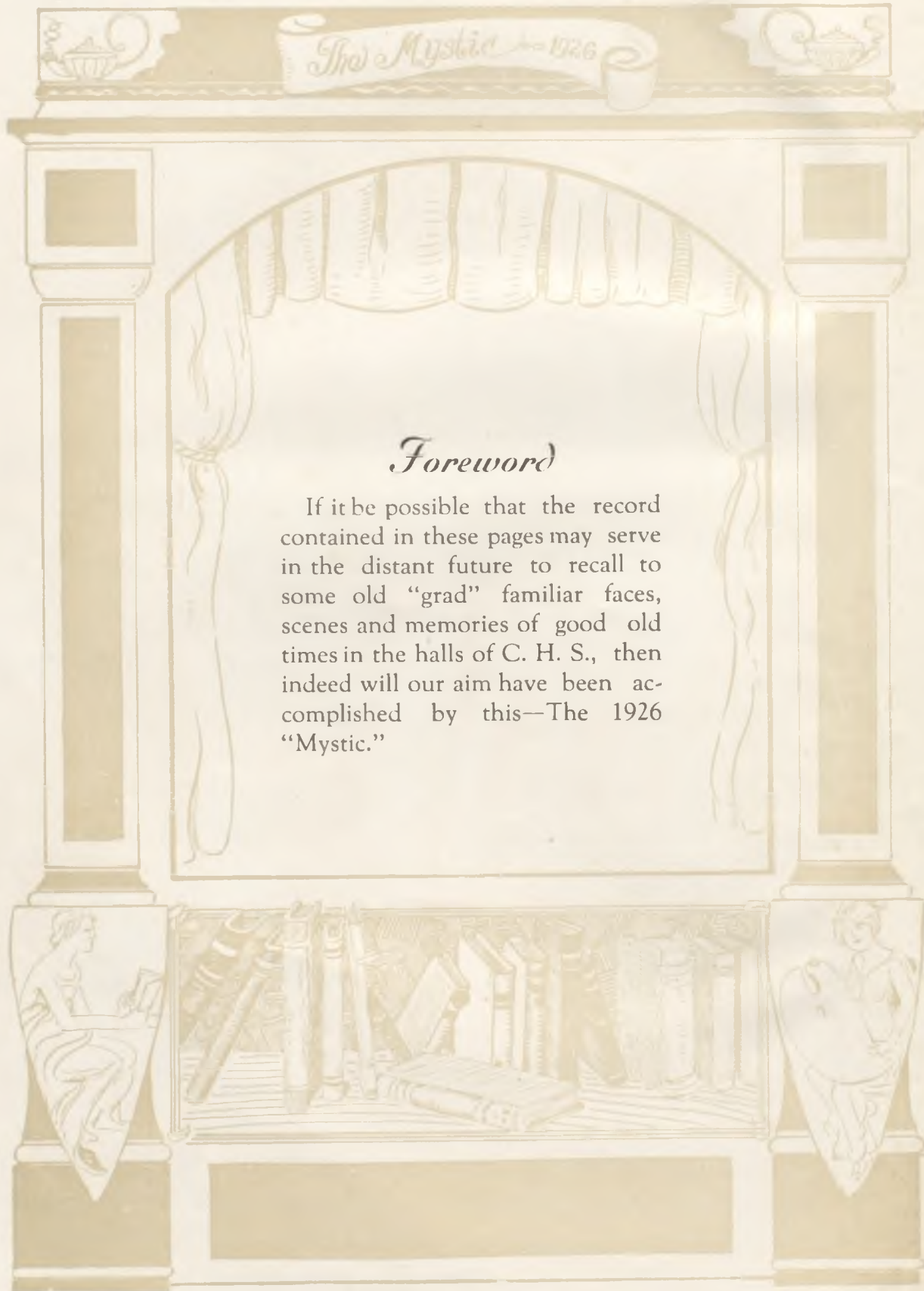
The Senior Class

of the

Cameron High School

Cameron, Missouri

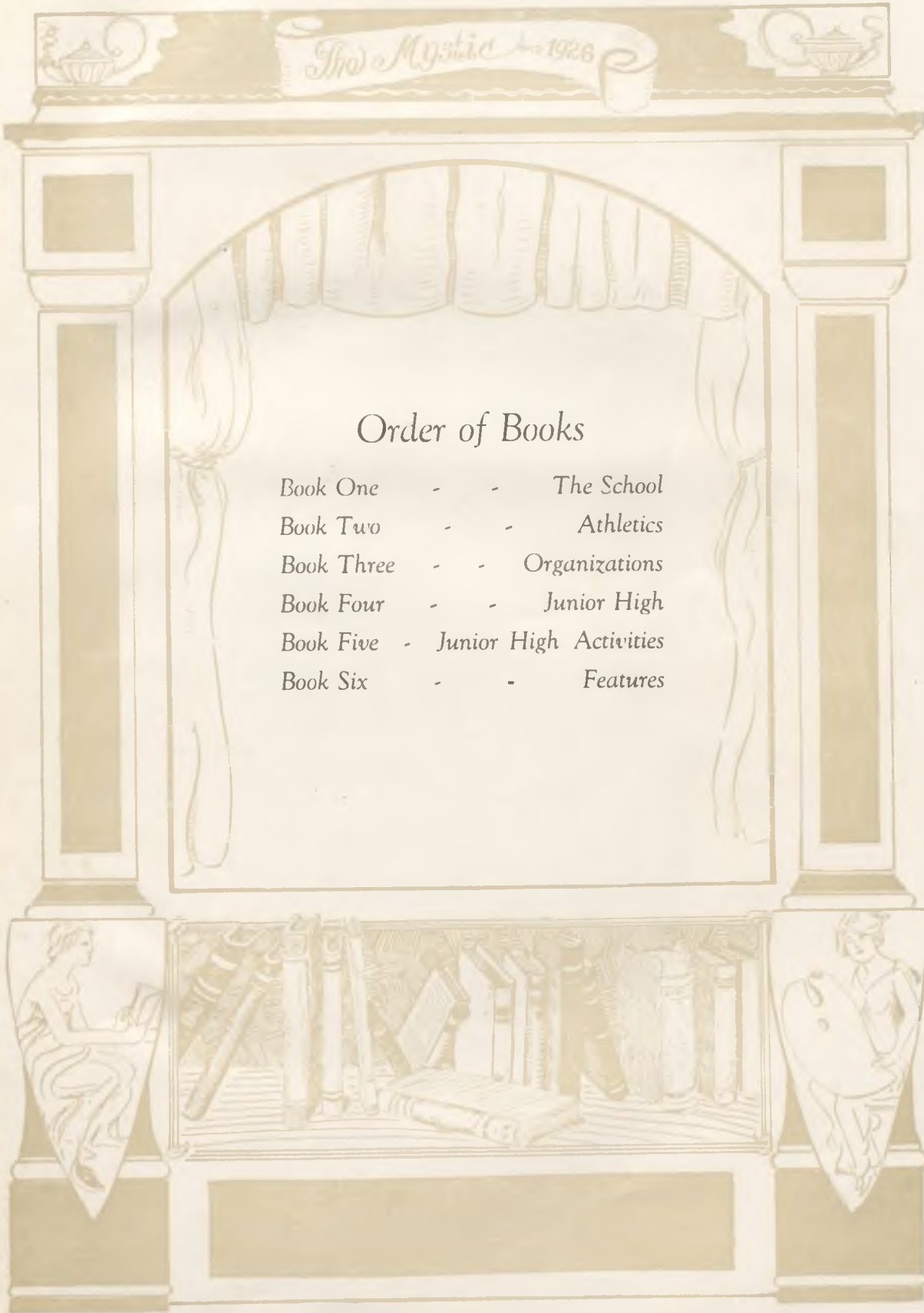




The Mystic - 1926

Foreword

If it be possible that the record contained in these pages may serve in the distant future to recall to some old "grad" familiar faces, scenes and memories of good old times in the halls of C. H. S., then indeed will our aim have been accomplished by this—The 1926 "Mystic."



The Mystic 1926

Order of Books

- Book One - - The School
- Book Two - - Athletics
- Book Three - - Organizations
- Book Four - - Junior High
- Book Five - Junior High Activities
- Book Six - - Features

Dedication

To Carl R. Gross and Sam T. Utz, we affectionately dedicate this year book. The first has been with us six years, has worked loyally to make our high school a better one, has, in his quiet, unspectacular way, done all that could be asked of any man. In short, Carl R. Gross has faithfully done his work and earned our praise.

Coach Utz has been here but three short years, but has, during that time, earned the love and admiration of all. He has been sincere in his work, has put C. H. S. athletically on the map, and has been all that a coach could and should be. He has the vibrant personality necessary to the ideal coach.

To these two men who have added so much to our school, we dedicate this copy of the 1926 Mystic.



The Mystic for 1926

Carl Gross





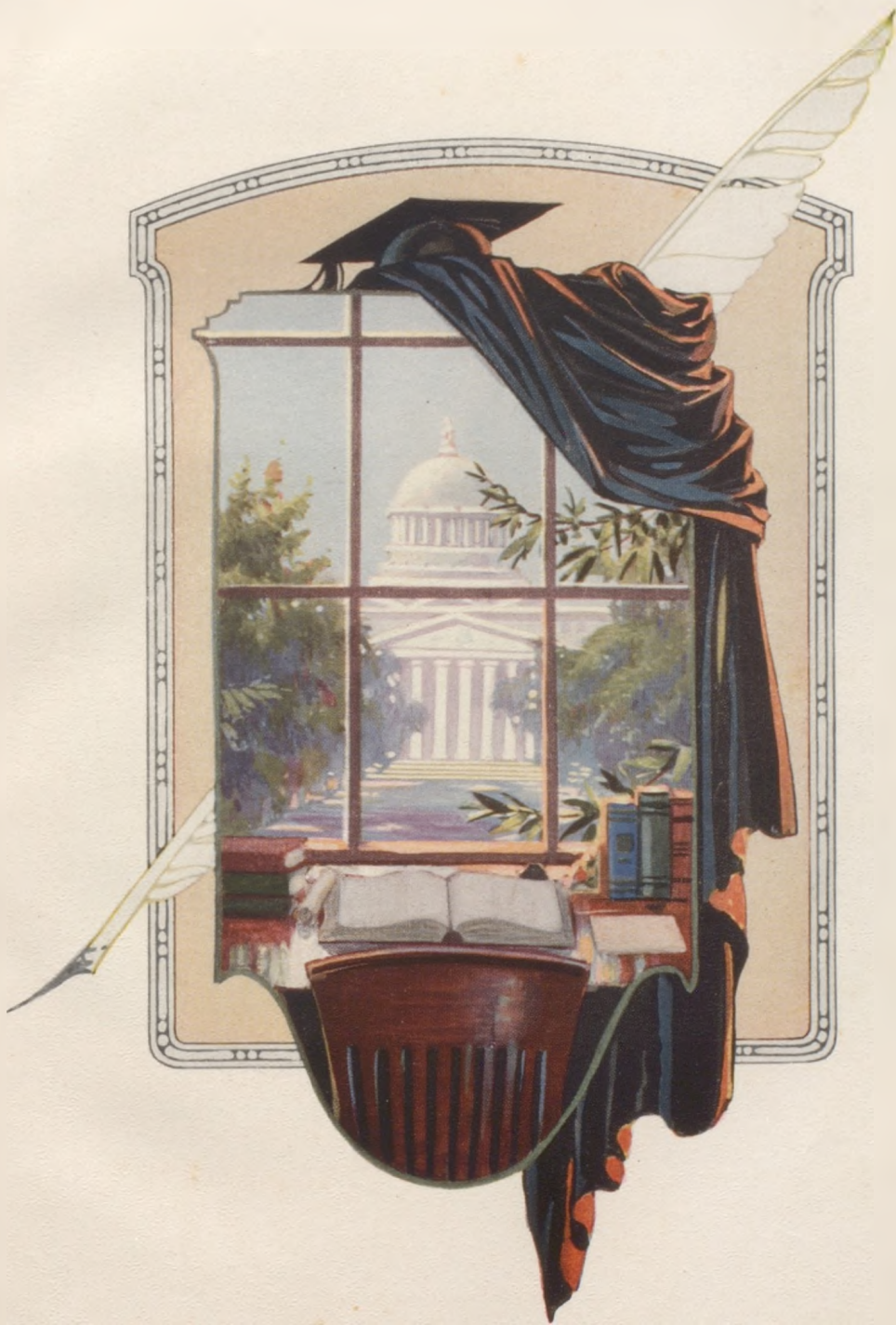
CAMERON HIGH SCHOOL



GOODRICH AUDITORIUM

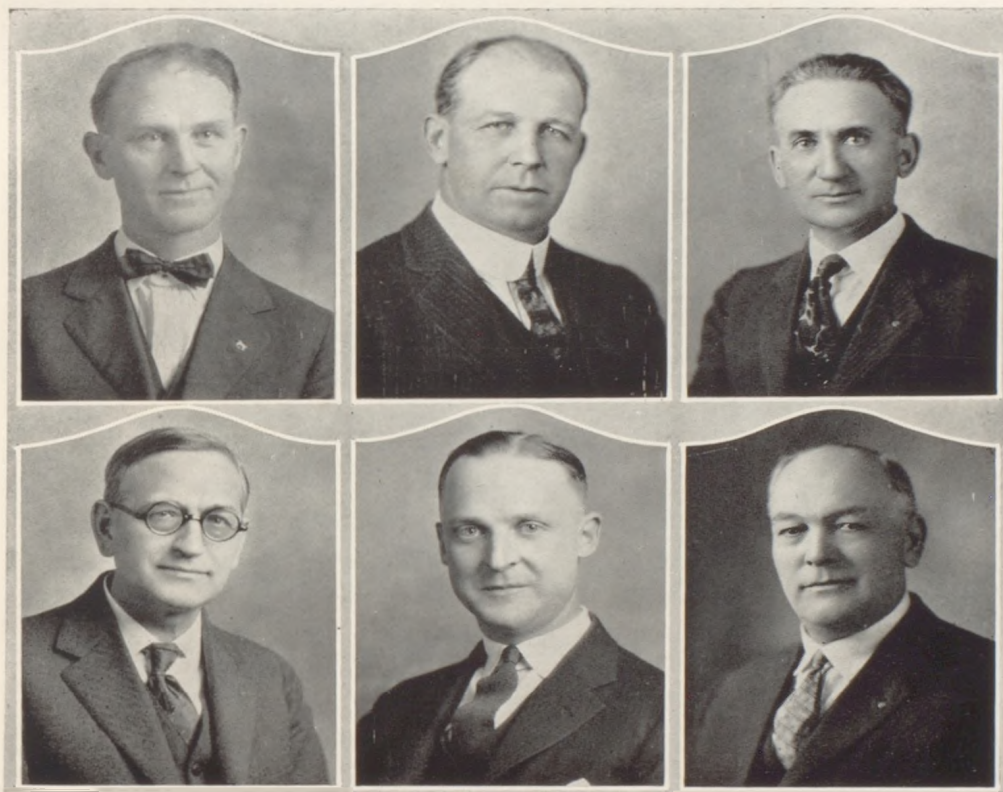
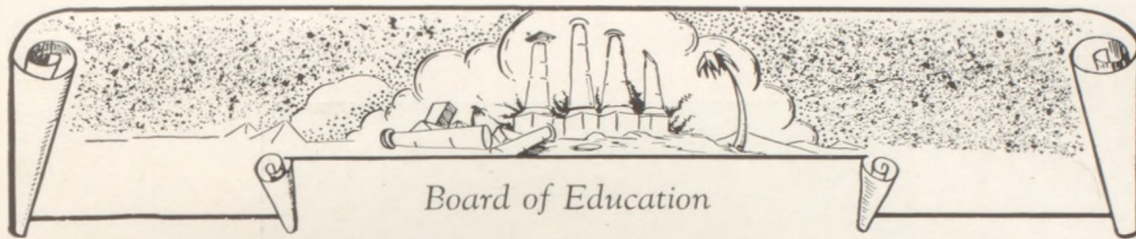


IN THE GOOD OLD WINTER TIME



THE CRAFT





L. C. Allen, President

S. H. Hook

J. H. Hulsizer, Secretary

D. G. Brillhart

Clarence Staples

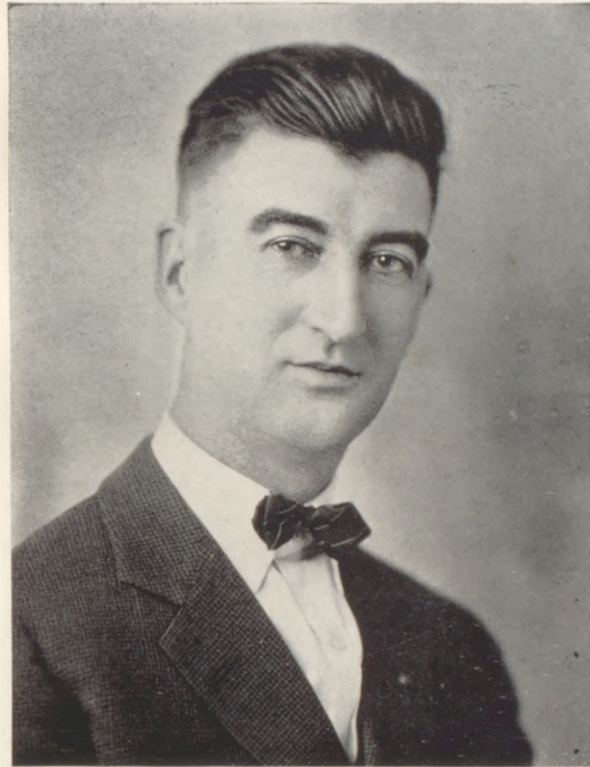
W. H. Kimes



E. A. ELLIOTT
Superintendent

Central State Teachers College, Warrensburg, Mo.; A. B., University of Kansas; Graduate Student, University of Kansas; Teacher of rural schools, Johnson County, Mo., 1900-1912; Supt., Centerview, Mo., 1912-'13; Principal, Lee's Summit, Mo., 1913-'15; Supt., Waverly, Kansas, 1915-'18; Supt., Fredonia, Kansas, 1918-'25; Supt., Cameron, Mo., 1925-'26.

Sociology, Economics.



W. W. SHIPLEY

Principal

Junior and Senior High Schools

B. S. in Education, University of Missouri, 1922; Graduate Student, Columbia University, New York City, 1925; Teacher Rural Schools, Cooper County, Mo., 1914-'17; Supt. of Schools, Clarksburg, Mo., 1917-'20; Principal, Mound City, Mo., 1920-'25; Principal, Cameron High Schools, 1925-'26.

Commercial Geography, Problems, Advanced Algebra.



MARY M. MATLICK

Kirksville, Mo.

Northeast Missouri State Teachers College, B. S. in Education;
University of California; Instructor, Unionville High School;
Cameron High School, 1925-'26.

Senior and Junior English, Public Speaking, Coach in Debate.

CARL R. GROSS

Cameron, Mo.

B. S. in Agriculture, University of Missouri, 1920;
Cameron High School, 1921-'22-'23-'24-'25-'26.

Vocational Agriculture, Junior Sponsor.

RUTH J. CLINE

Maryville, Mo.

B. S. in Education, Northwest Missouri State Teachers College, 1924;
Cameron High School, 1925-'26.

Girls Physical Education, Senior Sponsor, Coach of Dramatics,
Coach of Girls Basketball.



CLERC' HARDINGER

Jameson, Mo.

A. B. and B. S., University of Missouri; University of Wisconsin;
Cameron High School, 1925-'26.

Mathematics, Latin, Dean of Women.

ALICE McMURRAY

Maryville, Mo.

B. S. in Education, Northwest Missouri State Teachers College, 1924;
Cameron High School, 1925-'26.

Vocational Home Economics, Cooking, Ninth Grade Sponsor.

NETTIE DICKERSON

Livonia, Mo.

B. S. in Science, Northeast Missouri State Teachers College;
Student, University of Missouri, University of Wisconsin, University
of California; Instructor, Unionville High School;
Cameron High School, 1924-'25, '26.

Vocational Home Economics, Sewing; Junior Sponsor.



IRENE RAUSIN

Maysville, Mo.

Life Certificate, Northwest Missouri State Teachers College;
Graduate work, University of Colorado;
Cameron High School, 1923-'24-'25-'26.

Shorthand, Typewriting, Penmanship, Spelling, Bookkeeping.

WILSON THOMAS

Cameron, Mo.

A. B. in Science, Missouri Wesleyan College, 1920;
State University of Iowa;
Cameron High School, 1921-'22-'23-'24-'25-'26.

Chemistry, Physics, Practical Electricity, General Agriculture,
Physical Education, Faculty Advisor, The Mystic.

MRS. PEARL E. WARNER

Cameron, Mo.

Student, Missouri Wesleyan College and Northwest Missouri State
Teachers College; Cameron High School, 1922-'23-'24-'25-'26.

Supervisor of Study Hall, Faculty Advisor, The Tank.



MILDRED ENGLAND

Cameron, Mo.

A. B. in Language, Missouri Wesleyan College, 1925;
Instructor, Maysville High School, 1925;
Cameron High School, 1925-'26.

American History, Modern History, Sophomore Sponsor, Ass't.
Faculty Advisor, The Tank.

SAM T. UTZ

St. Joseph, Mo.

B. S. in Agriculture, University of Missouri, 1923;
Cameron High School, 1924-'25-'26.

Vocational Agriculture, Boys Physical Education, Coach of Foot-
ball, Basketball and Track.

MRS. GERTRUDE DAVIS

Cameron, Mo.

Northwest Missouri State Teachers College; Cape Girardeau State
Teachers College; Missouri Wesleyan College; A. B. in Education,
Park College, 1923; Cameron High School, 1924-'25-'26.

Psychology, Methods, Teacher Training Reviews, Mathematics.



MILDRED BENDER

Cameron, Mo.

A. B. in Language, Missouri Wesleyan College, 1925;
Cameron High School, 1925-'26.

French, English, Sophomore Sponsor.

FLORA LEE SIMS

McFall, Mo.

Graduate, Kansas Conservatory of Music;
Assistant Teacher of Violin, Kansas City Conservatory of Music, '21;
Northwest Missouri State Teachers College;
Extension Instructor, Northwest Missouri State Teachers College;
Cameron High School, 1923-'24-'25-'26.

Supervisor of Music, Junior and Senior High School, Orchestra
Director.

SENIORS





VICTOR DUSENBERRY Cameron. ORENE SYDEBOTHAM Cameron.

Editor, Tank; Pres. H-Y Board of Control; Track Letter Man, 1925; Track Squad, 1926; "C" Mens Club.

"Who is always spick and span,
Who flirts with the girls whenever
he can,
Who is the high school's ladies' man,
Who?—Vic Dusenberry."

Girls Glee Club; French Club.

"Sunny, jolly, and fair this maid,
Of jabber and talk she is unafraid,
She goes right ahead and says what
she will,
If never Johnnie if she's still."

LILLIE GOFF Cameron. HOWARD STONE Cameron.

Teacher Training Club.

"I'm going to be a school marm,
As strict as strict can be.
I'll teach the boys to dig fish worms
And the girls to make candeeeee."

Football Squad, 1925;
Track Squad, 1926.

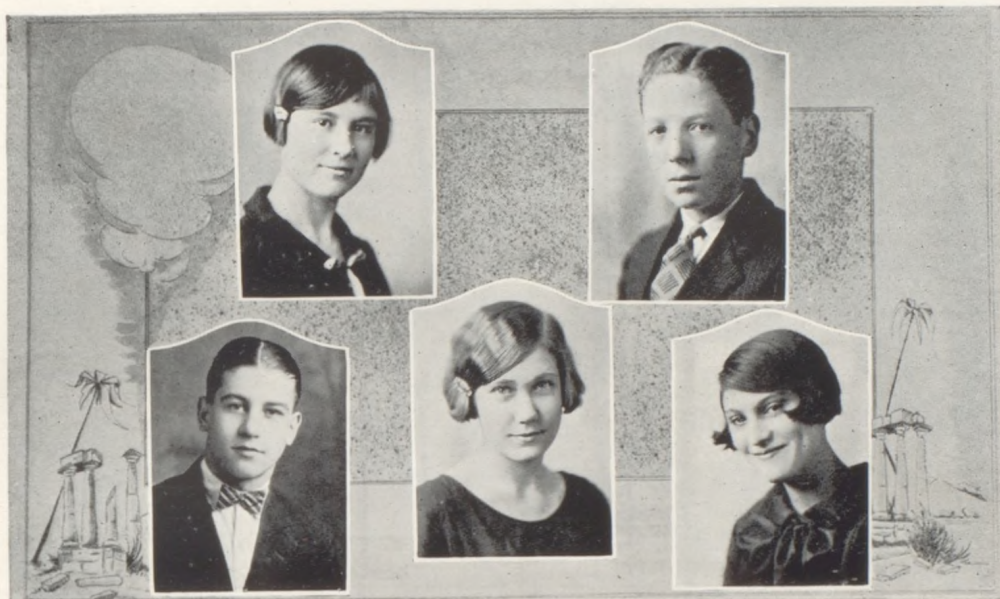
"No, he's not a hard stone,
But a good natured kind of fellow,
And we know he has a heart within
That is surely good and mellow."

ELIZABETH BECKNELL Cameron.

Girls Glee Club; French Club.

"It may be grammatically wrong,
'Herr' as a subject to use,
But I'm sure you'd agree, if you
could see
That I love her and she loves me."

The MYSTIC



EMMA BAKER

Cameron.

Girls Glee Club; French Club.
 "A girl so shy and fair,
 And full of smiles and fun.
 Her disposition is so rare,
 We love her—oh, a ton."

ROY TODD

Cameron.

Editor, 1926 Mystic; Hi-Y Club;
 Tennis Doubles; French Club.
 "Curly-headed, blushing Roy,
 Lovely kid, but a bashful boy,
 But he'll get over it some sweet day,
 When roses bloom in Mandalay."

MELVIN MAYES, "Punk" Cameron.

Football Letter Man, 1925;
 "C" Mens Club.
 "Among the girls he always shines
 And never leaves Stacomb behind,
 In English class he'd argue still,
 If Mary Matilda had her will."

OPAL WHITAKER

Mercer, Mo.

Girls Basketball Squad;
 Teacher Training Club.
 "Just a girl of natures many,
 She comes to school with all the
 rest.
 Forgive her if she acted naughty,
 For as a teacher she'll be blest."

EMMA HARTEL

Kidder, Mo.

Teacher Training Club.
 "Here's another lassie fair,
 Two dimples she possesses rare.
 She has a smile for all she meets,
 We hope she'll always be as sweet."

The MYSTIC



SARA KENNEY
Girls Glee Club; French Club.

"Has hair as black as ebony
And eyes that sparkle do,
And just to introduce this maid,
We'll say her wants are few."

EVELYN WRIGHT
French Club; Campfire.

"Evelyn, a popular girl in her class,
Is a very studious little lass.
She never flirts, oh mercy no!
She even lets her long hair grow."

BETTY JO WILLIAMS
Cameron.

Debate Team; Yell Leader;
Extemporaneous Speaking;
Mystic Staff; Senior Vice-Pres., 2nd
Semester; Board of Control; Teacher
Training Club; French Club;
Campfire.

"We surely congratulate Charlie,
But we warn him of his fate;
For she won over hoards of others,
In red-hot, mean debates."

CLARA HOLADAY
Cameron.
Girls Basketball Squad.

"She keeps us all wondering, oh so
much,
For she never talks a mite;
And if she has a lover,
We'll vouch she'll hold him tight."

IRENE PHELPS
Cameron.

Associate Editor, Mystic;
Girls Glee Club; Campfire.

"Oh, boy! She sure makes the E's,
But this isn't all that she can do;
She has an athlete after her,
And we believe she likes him, too."

The MYSTIC



ROSE REED Cameron. HERBERT MUDERS Cameron.

Teacher Training Club;
Girls Glee Club; Campfire.

"A teacher training girl is she,
A teacher she is sure to be,
Unless a Sophomore interferes,
Her hopes will be cherished in fu-
ture years."

Capt. Boys Basketball Team, 1926;
Football Letter Man, 1925;
Basketball Letter Man, '24, '25, '26;
Track Letter Man, 1925;
Track Squad, 1926; Pres. "C" Mens
Club; Vice-Pres. Hi-Y; Tank Staff;
Mystic Staff.

"A bashful boy is Captain Pete,
In athletics he's hard to beat,
But we've often heard it said
That pop making will rule in-
stead."

BEN AUSMAN Cameron. LOMA RYAN Cameron.

Football Letter Man, 1924-25;
Basketball Letter Man, 1925-26;
Track Letter Man, 1924-25;
Track Squad, '26; Bus. Mgr. Mystic;
Tank Staff; Hi-Y; Secretary,
Board of Control; "C" Mens Club.

"I'd like to be a fisherman,
And live beside the sea,
Where I can fish the livelong day,
For pretty maids for me."

French Club; Teacher Training Club;
Campfire.

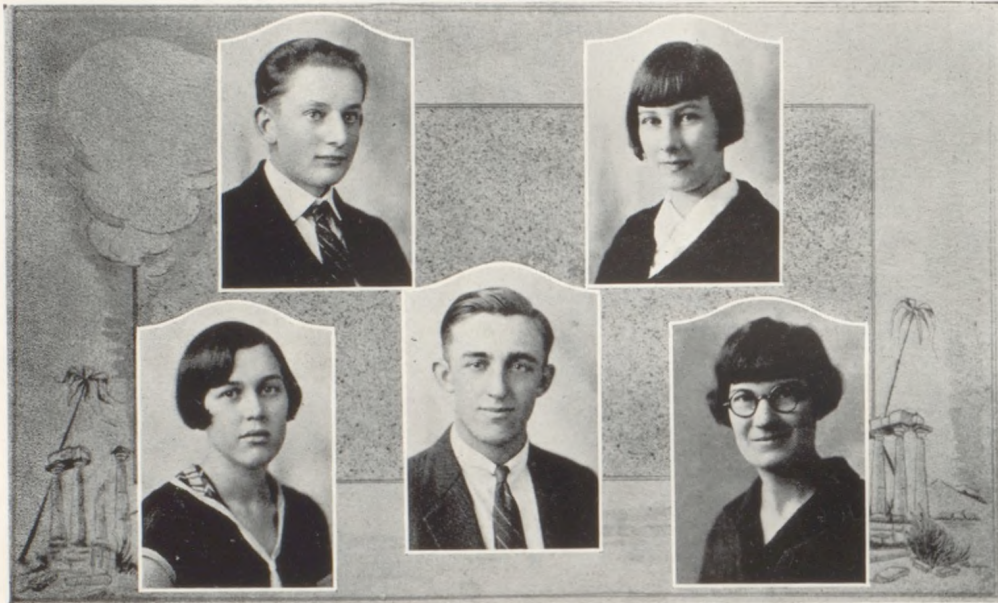
"Now Lama's not the rind,
For we can prove this truth to you.
She's just the fruit itself, you see,
And a wonder for all of us, too."

LOUISE OSBORN Cameron.

Mystic Queen; Mystic Staff;
Sec'y. and Treas. Seniors, 1st Sem ;
Girls Glee Club; French Club;
Tank Staff.

"Very popular and with beauty blest,
So quiet and serene,
For lots of friends she surely has,
For she's our Mystic Queen."

The MYSTIC



CLARENCE VAN GUNDY Cameron.

Track Squad.

"In Chemistry this boy's a shark,
In English a Shakespeare true,
But with the girls—Oh, well,
I'll leave the rest to you."

LORRAINE SHIRTS Cameron.

Tank Staff; French Club.

"A good-natured girl was wanted,
And this one was sent to us;
So quiet and unassuming,
Who never thinks to fuss."

CLARA BURKETT Cameron.

Girls Basketball Squad;
Girls Glee Club; Campfire.

"Clara Burkett, so tall you see,
Is doomed a great school marm to be;
But what we're wondering under our hat,
Is whether she'll marry or keep a cat."

RAYMOND MORTON Cameron.

Football Letter Man, 1925;
Track Letter Man, 1925;
Track Squad, 1926;
"C" Mens Club; Hi-Y Club.

"Raymond, another one blessed with brains,
Who keeps all he knows quite still,
But we've never had any evidence yet
That this boy ever means ill."

MARGUERITE WONER Cameron.

French Club.

"Forest, I'll tell you a secret.
She said not to speak of you;
But we really couldn't help it,
We know she loves you true."



MARIE WELLS Lucerne, Mo. HAROLD CONSTANCE Cameron.
 Girls Glee Club; Campfire. Track Squad, 1926.
 "As a pianist she's won much fame,
 Music is her middle name;
 And her future no one tells,
 Whether she'll always be a Wells."
 "Another Caruso blazing the path,
 And that isn't half of the tale;
 For he marvels at himself, you see,
 So we think he'll never fail."

GLADYS PLUMMER Cameron. DEAN BAKER Cameron.
 Girls Glee Club.
 "Always moving, never still,
 Lovey dovey, as you will,
 Real cute kid, we must confess,
 Some lad thinks so, nevertheless."
 "We wonder if he'll ever be
 What his first name designates;
 If he is, he'll prove his worth,
 For he's never bored with dates."

HAZEL PORTER Osborn, Mo.
 Girls Glee Club; Campfire.
 "He has a coupe, and Hazel dear
 Rides 365 times a year;
 And if there's a party or other mix,
 We'll say she rides 366."

The MYSTIC



BYRNE COEN

Cameron.

Hi-Y Club; Track Squad.

"A great kid for pleasure, fun and
folly,
Never grouchy, always jolly,
Wonderful fellow for a pal,
And happy then will be the gal."

CECIL WARD

Cameron.

French Club.

"She possesses a voice soft and mild,
Something we all adore, fair child,
Shakespeare himself admires this
trait,
So that it is rare is no mistake."

ORION PACKARD

Cameron.

Football Letter Man, 1925;
"C" Mens Club.

"Here's our old friend comic Pete,
He'd like to be a great athlete;
But nevertheless please don't be
vexed,
For he sure shines with the fairer
sex."

CATHERINE CALDWELL

Cameron.

Teacher Training Club.

"Catherine, whose musical talent is
great,
Is destined to be a school teacher
by fate.
She never does gossip, and never
chews gum,
But when she's around she makes
everything hum."

DOVIE STURGISS

Cameron.

Basketball Squad;
Teacher Training Club.

"She is a dove—a token of love,
Surely she was named aright;
For what else could suit this modest
girl
Than that she's a loving mite."

The MYSTIC



GRACE LEEKA Cameron. GRACE FARMER Cameron.

French Club.

"Which shall it be,
Which shall it be,
Which shall I choose
Among the three?"

French Club; Campfire.

"Whoever gets this farmer
Surely will make good;
For she's just as nice as nice can be,
And acts as a lady should."

BETTY LEE DOOLEY Cameron. ILAH MYERS, "Ike" Cameron.

Girls Glee Club.

"Just a lassie we all admire,
For she is quiet and demure,
And we know her thots are pleasant,
And always good and pure."

Girls Basketball Team; French Club.

"She has the spirit of the school,
And likes both fun and work.
She laughs, plays, and is so gay,
But the tasks she'll never shirk."

JEWELL BANNING Cameron.

French Cub; Girls Basketball Squad.

"Just a fair little Jewell so rare,
Dark blue eyes and golden hair,
That the boys all love her is no mis-
take,
Especially if they get a date."

The MYSTIC



MERL WILLIAMS Cameron. ALICE STADE, "Jackie" Cameron.

Basketball Squad; Track Squad;
Hi-Y Club; Orchestra.

Girls Basketball Captain;
Sec'y.-Treas., Seniors, 2nd Sem.

"When I was just a little boy,
The girls I did not like;
But now that I'm a "Big Boy,"
I love one with all my might."

"She made a dandy captain,
And we loved to see her do it,
And whoever proposes to Lady fair,
We think he'll never rue it."

DOROTHY BERTEN Cameron. WAYNE BAKER Cameron.

"Dorothy doesn't care for men,
Laughs at the thought of beaux.
At all the forms of sentiment
She just turns up her nose."

Basketball Squad.

"This boy comes to school to learn,
Time is precious for this lad,
He never even looks at girls,
So we know he's not so bad."

FLOY McCOMMAS Cameron.

Girls Glee Club.

"I can wash dishes and clean up the
house,
Do any of the duties of a spouse,
But there's one thing that I can't do,
And that's stop talking when I'm
through."



MARIE BIRD

Cameron.

"Tweet, tweet, little bird,
Lovable, sweet and kind.
Surely someone sent you here
To gladden wild mankind."

"Happy am I, from care I'm free,
Why aren't they all contented like
me?
For Lottie's love I now do hold.
And it's more precious than silver
or gold."

WAYNE LEACH

Cameron.

Football Captain, 1925;
Football Letter Man, 1923, '24, '25;
Basketball Letter Man, '23, '24, '25;
Track Letter Man, 1925;
"C" Mens Club.

MILDRED LEWIS

Cameron.

French Club.

"Celeste, so stately and sedate,
Never gets up till half past eight,
Then she goes to school on the run,
Only to find her class begun."

MAURINE SLOAN

Cameron.

Orchestra; Girls Glee Club; Mystic
Staff; French Club; Campfire.

"A pleasant nature this lassie has,
And shares it with everyone,
Doesn't say much, but means a lot,
And is always in for fun."

DONALD GALL

Cameron.

"They call him 'Donald, the Gaul,'
He's often seen in the hall,
To stand around and laugh and laugh
With a little girl named Bigger-
staff."

BEATTY SILVIUS

Turney, Mo.

Football Squad; Track Squad.

"As 'Dead-Eye' to us he's better
known,
And his eyes among the girls do
roam;
And when he calls them on the phone,
They always say, 'Sure, I'll be
home.'"

The MYSTIC



KATHLEEN HOGAN Cameron.

Literary Editor, Mystic Staff;
French Club; Campfire.
"A sweet Irish Coleen have we here,
Who was never known to shed a
tear;
But who she loves, no one could guess
Unless, perhaps, she might con-
fess."

EDITH HATFIELD Cameron.

"In shorthand class Edith was a whiz,
As a poetess she surely knows her
biz,
In one small fleeting minute
She talked her teachers to the
limit."

MARIE O'NEAL, "Mike" Cameron.

Basketball Squad, 1926; Girls Glee
Club; French Club; Campfire.
"Marie, another member of the class,
Is sure a merry little lass,
Sometimes she's good, sometimes she's
bad,
She'll cheer you up when you are
sad."

JAMES HARTFORD Cameron.

Teacher Training Club; Track Squad.
"In all his studies Jimmie's a shark,
And this is not a sly remark,
But when it comes to teaching
His knowledge certainly is far-
reaching."

ORVILLE OFFUTT Cameron.

Football Letter Man, 1924, '25;
Basketball Letter Man, '24, '25, '26;
Track Letter Man, '24, '25; Captain
Track Squad, '26; Senior Class Pres.,
1st and 2nd Sem.; "C" Mens Club.
"Irene, my dearest, please be mine;
I'll build thee a castle forever
thine.

And if Fate permits it, we'll always
be
As happy as we've been the last
years three."

ERNEST THOMPSON St. Joseph, Mo.

Football Letter Man, 1925; Track
Squad; "C" Mens Club; Mystic Staff;
Tank Staff; Pres. Board of Control;
Hi-Y Club.

"Now everything considered,
This wouldn't be a school,
If we didn't have our Preacher 'round
To often break the rule."

RUTH SLOAN Cameron.

Girls Basketball Squad.
"She's very quiet, so we see,
'Silence is golden' was spake to
thee,
So we think we plainly see
Why from words thou art so free."



The MYSTIC



IRA KIMES

Cameron.

Track Squad; "C" Mens Club; Pres. Junior Class, 2nd Sem.; Football Letter Man, 1925; Basketball Squad; Hi-Y Club; Debate Team; Declamation; Mystic Staff.

K-ingly, I-ntoxicated, M-agnanimous, E-xcitable, S-coundrel.

IRENE KIMES

Cameron.

Declamation; Campfire.

K-ind, I-rritable, M-elancholy, E-n-ergetic, S-ensible.

WILLIAM PITTMAN

Cameron.

Football Squad; Track Squad.

P-erfect, I-mpolite, T-ense, T-oothless, M-anly, A-spiring, N-oxious.

LaVANGE DUNNINGTON

Cameron.

Girls Glee Club.

D-ear, U-ncivilized, N-aughty, N-egligent, I-mpatient, N-eat, G-ay, T-oilsome, O-riginal, N-oisy.

MILDRED NICHOLS

Cameron.

Junior Sec'y.-Treas., 2nd Semester.

N-ice, I-ndependent, C-razy, H-opeless, O-dd, L-uscious, S-ilent.

DELIA HUEY

Cameron.

H-eartless, U-ndaunted, E-raditic, Y-oung.

ALICE CAMPBELL

Cameron.

Girls Glee Club.

C-ompassionate, A-ble, M-EEK, P-atricotic, B-ald, E-verlasting, L-ark, L-oyal.

CHARLES SHAW

Cameron.

Boys Glee Club; Hi-Y Club; Junior Class Vice-Pres., 2nd Sem.; Editor-in-Chief-Elect of Tank.

S-imple, H-uffy, A-greeable, W-il-liams.

The MYSTIC



- | | | | |
|--|----------|---|----------|
| PAUL EGBERT | Cameron. | ALICE FOLSOM | Cameron. |
| E-nergetic, G-allant, B-arbaric, E-
conomical, R-emiss, T-all. | | Campfire; Declamation. | |
| MARJORIE DYCHE | Cameron. | F-unny, O-paque, L-ovely, S-edate,
O-bedient, M-erry. | |
| D-ainty, Y-earning, C-o s t l y,
H-aughty, E-gotistical. | | LOTTIE BAKER | Cameron. |
| ROSWELL FARRIS | Cameron. | B-ackward, A-ctive, K-ind, E-ra-
ditic, R-ational. | |
| Pres. Junior Class, 1st Semester;
Hi-Y Club. | | PAULINE REMPFER | Cameron. |
| F-ast, A-bstracted, R-adical, R-ag-
ged, I-ignorant, S-candalous. | | Basketball Squad. | |
| RUTH QUIGLEY | Cameron. | R-oguish, E-ndorable, M-iraculous,
P-athetic, F-ast, E-nvious, R-ol-
licky. | |
| Girls Glee Club; Declamation; Quar-
tet; Vice-Pres. Junior Class, 1st Sem. | | HOWARD PECK | Cameron. |
| Q-ueenly, U-nblemished, I-ntelli-
gent, G-ifted, Lightsome, E-ssen-
tial, Y-outhful. | | Boys Glee Club; Quartet. | |
| | | P-artial, E-asy, C-omposed, K-ute. | |



JOHN SPRAGUE

Cameron.

Football Letter Man, 1924, '25.

S-ingle, P-eerless, R-ough, A-thlet-ic, U-seless, E-xcellent.

MAE BURCKETT

Cameron.

Basketball Team.

B-aleful, U-ncommon, R-easonable, K-ind, E-fficient, T-horough,, T-em-perate.

RETA MEEK

Cameron.

Girls Glee Club.

M-odest, E-ccentric, E-xalted, K-it-tish.

PEARL MORELOCK

Cameron.

M-inute, O-bsolete, R-esentful, E-xquisite, L-onesome, D-minous, C-oefficient, K-uckoo.

ELIZABETH BIGGERSTAFF Cameron.

Girls Glee Club; Girls Quartet.

B-eautiful, I-ndolent, "G-oofy," G-all, E-arnest, R-ight, S-inless? T-aken, A-wful, F-urious, F-air.

FRANCES URBAN

Cameron.

Girls Glee Club; Declamation.

U-nbleached, R-oyal, B-eneficient, W-ake, N-umskull.

ELEAN CALDWELL

Cameron.

C-urious, A-lerl, L-aborous, D-uti-ful, W-himsical, E-xecrable, L-ean, L-ank.

FRANCIS CRAWFORD

Cameron.

Boys Basketball Squad.

C-oncave, R-omantic, A-utomatic, W-ild, F-resh, O-utlandish, R-akish, D-andy.

The MYSTIC



EVA TEMPLE	Macon, Mo.	ROGER FELLERS	Cameron.
Girls Basketball Team.		F-amous, E-ntertaining, L-ucky,	
T-emper, E-xecrable, M-aniac,		L-oud, E-vil, R-ash, S-crubby.	
P-eculiar, L-iberal, E-go.		EDNA EASTER	Cameron.
RUBY COUSINS	Cameron.	Girls Basketball Squad.	
Girls Glee Club; Campfire.		E-rect, A-doptable, S-mart, T-imid,	
C-omposed, O-bservant, U-neasy,		E-nlivening, R-estless.	
S-enseless, I-nnocent, N-ice, S-elf-		JOY CARPENDER	Cameron.
ish.		Girls Glee Club; Girls Quartet.	
EFFIE MORTON	Cameron.	C-harming, A-ffable, R-eliable,	
Basketball Squad.		P-etty, E-xplosive, N-ighborly,	
M-uscular, O-rdinary, R-eckless,		D-arling, E-verlasting, R-efined,	
T-ireless, O-rderly, N-ifty.		ANNA HUTTON	Cameron.
DONALD KING	Cameron.	H-arsh, U-nfailing, T-hrifty,	
Track Squad.		T-hankful, O-bliging, N-oteworthy.	
K-illing, I-ncapable, N-umb, G-en-			
tle.			

The MYSTIC



FRANCES WARNER Winston, Mo.
 Sec'y.-Treas., Juniors, 1st Seméster;
 Girls Glee Club; Campfire.

W-hitewash, A-dorable, R-ustic,
 N-efarious, E-vil, R-idiculous.

ANNA RICHARDSON Osborn, Mo.

R-opy, I-diotic, C-ompetent, H-or-
 rid, A-ppalling, R-evengeful, D-e-
 lightful, S-illy, O-utspoken, N-erv-
 ous.

HELEN CHENOWETH Cameron.

C-ounterfeit, H-ysterical, E-xpen-
 sive, N-ifty, O-bsolescent, W-ay-
 ward, E-nvious, T-rifling, H-arm-
 less.

HELEN KAPKE Cameron.

K-nightly, A-miable, P-leasant,
 K-iddish, E-legant.

IVAN ZANCKER Cameron.

Basketball Squad; Track Squad;
 Hi-Y Club.

Z-ealous, A-dventurous, N-aive,
 C-heesy, K-idding, E-gotistical,
 R-ude.

FRANCES EAVES Cameron.

Orchestra.

E-xtraordinary, A-rtful, V-irtuous,
 E-legant, S-ly.

FRANCES CATHCART Cameron.

Basketball Team.

C-lever, A-dmirable, T-auntless,
 H-ummer, C-rafty, A-cephalous,
 R-eliable, T-earful.

RAYMOND WARNER Cameron.

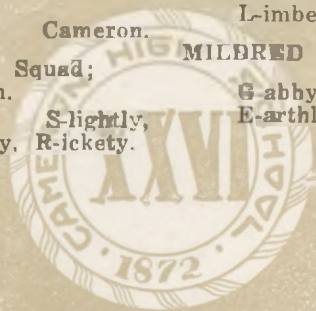
Basketball Squad; Track Squad;
 Hi-Y Club.

W-ellbred, A-uspicious, R-eligious,
 N-oted, E-ducated, R-ighteous.

The MYSTIC



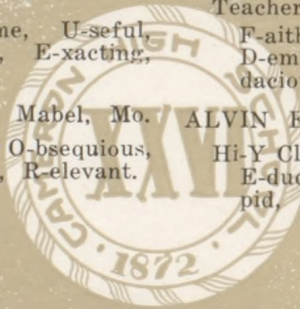
KESTER ARNOLD	Cameron.	LaRUE DAVIS	Cameron.
Hi-Y Club; Glee Club. A-mbitious(?) R-obust, N-uisance, O-nerly, L-ove-sick, D-atable.		D-ecitful, A-rrant, V-icious, I- ronical, S-hocking.	
KATHERINE HEINZ	Cameron.	GEORGE BOTHWELL	Cameron.
H-eavy, E-normous, I-ncipient, N-ervous, Z-ippy.		Track Squad. B-abyish, O-rderly, T-angible, H-onest, W-olfish, E-rect, L-azy, L-imber.	
WESLEY FOSTER	Cameron.	MILBRED GAMET	Cameron.
French Club; Basketball Squad; Hi-Y Club; Tennis Team. F-renchy, O-bscure, S-lightly, T-imorous, E-xemplary, R-ickety.		G-abby, A-cetic, M-eddlesome, E-arthy, T-ough.	



The MYSTIC



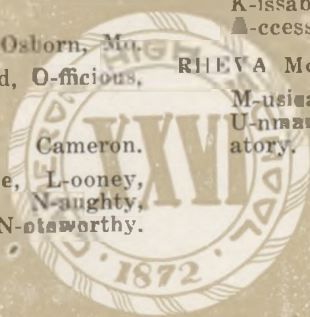
LIONAL CHAPMAN	Cameron.	JOHN KIRKENDOLL	Cameron.
Boys Glee Club. C-hicken-hearted, H-erculean, A-b- normal, P-itiful, M-ischievous, A-c- tive, N-ecessary.		K-nowing, I-mpatient, R-epugnant, K-navish, E-arnest, N-ovel, D-es- perate, O-bdurate, L-udicrous, L-ost.	
IDA STUCKER	Cameron.	GRETCHEN FLANDERS	Cameron.
Basketball Squad; Teacher Training Club. S-erious, T-roublesome, U-seful, C-ompatible, K-een, E-xacting, R-etiring.		Basketball Squad; Teacher Training Club; Librarian. F-aithful, L-ittle, A-celous, N-otty, D-emure, E-nduring, R-emote, S-e- dacious.	
ESSIE COOPER	Mabel, Mo.	ALVIN EASTER	Cameron.
C-arnal, O-sculated, O-bsequious, P-ardonable, E-arthly, R-elevant.		Hi-Y Club. E-ducated, A-ugust, S-edate, T-or- pid, E-xactly, R-espectable.	



The MYSTIC



FRANCES MOORE	Osborn, Mo.	NELLIE HARRIS	Cameron.
M-erciful, O-utrageous, O-ver-careful, R-elentless, E-lfish.		H-appy, A-ccordant, R-espectable, R-uined, I-ndustrious, S-weet.	
NATHAN JONES	Cameron.	ORIN KANAN	Cameron.
Football Letter Man, 1925; "C" Mens Club.		Football Squad; Basketball Squad; Track Squad; Hi-Y Club; Mystic Staff; Board of Control; Tank Staff.	
J-olly, O-ral, N-arrows-minded, T-agle-eyed, S-avage.		K-issable, A-morphous, N-oble, A-ccessible, N-eglectful.	
HENRIETTA MOORE	Osborn, Mo.	RHEVA McCLURE	Cameron.
M-ournful, O-ver-valued, O-fficious, R-unt, E-nsnaring.		M-usical, C-ranky, C-ute, L-ively, U-nmanageable, R-estive, E-xclamatory.	
HERNDON MULLINIX	Cameron.		
M-ighty, U-nreasonable, L-ooney, L-earned, E-xpository, N-aughty, T-hankful, O-bliging, N-otaworthy, I-ndecent, X-y, z, etc.			





"The Junior's Nightmare"

SOPHOMORES



The MYSTIC



RALPH JONES

Cameron.

"Five times a week he goes to school,
So some day he won't be a——"

IRENE SHIRTS

Cameron.

Girls Basketball Squad;
Board of Control; Campfire.
"Keen intelligence and ready wit,
With modesty to go with it."

RICHARD BOWMAN

Cameron.

Class President, 2nd Semester;
Tennis Singles and Doubles;
Orchestra.
"He often call up 331, but——
Why should the devil have all the
fun?"

LOIS BRYAN

Cameron.

Orchestra.
"Tall and slender, pretty and sweet,
Nimble fingers make the piano
speak."

DOROTHY WEST

Cameron.

Girls Glee Club.
"A little maid with smile so gay,
Happily dances on her way."

EDGAR BRYANT

Cameron.

Boys Glee Club; Hi-Y;
Track Squad, 1926.
"Oh, Martha's good enough for me,
So why should other girls I go
see?"

LOUISE SHIRTS

Cameron.

Girls Basketball Squad; Orchestra;
Yell Leader.
"Heart-seeking baby, acrobat, too,
Some combination, I think, don't
you?"

HOLWITH PARTIN

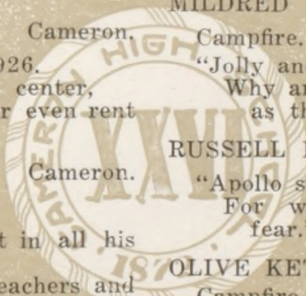
Cameron.

Football Squad, 1925; Track Letter
Man, 1925; Track Squad, 1926; Bas-
ketball Letter Man, 1926. "C" Mens
Club; Hi-Y.
"Awkward and bashful is he, some
say,
But his lady friends don't think
that way."

The MYSTIC



EVELYN LEASK "She's smart and short, But a jolly good sport."	Cameron.	WARDELL SHELDON Football Letter Man, 1925; Boys Basketball Squad, 1926; Track Squad, 1926. "In athletics by the coach he's bossed, But he plays the game, be it won or lost."	Independence.
MOSS AUTEN Track Squad, 1926. "Moss has intestinal fortitude And with lots of speed he is im- bued."	Cameron.	MILDRED SCHLEICHER Campfire. "Jolly and gay, a lovable miss, Why aren't they all as winsome as this."	Cameron.
CLARA ARMSTRONG Girls Basketbal Team, 1926. Yes, she's our jumping center, We wouldn't sell her, or even rent her."	Cameron.	RUSSELL PACKHAM "Apollo surely we have here, For whose destiny we have no fear."	Cameron.
RAY McCOMMAS Orchestra. "He furnishes amusement in all his classes, For his boy friends, teachers and little lasses."	Cameron.	OLIVE KETTENRING Campfire. "A lass who in her classes shines, And never of the weather whines."	Cameron.



The MYSTIC



KENDALL WAMSLEY	Cameron.	EARL MORTON	Cameron.
"He sat in meditation very deep, And then he slowly fell asleep."		"Quite bashful and very shy, A very studious boy am I (?)"	
HELEN SCHNEIDER	Cameron.	MARY BYERS	Cameron.
Board of Control; Campfire. "Come and trip it as you go, On the light, fantastic toe."		Campfire. "I have a man, Pete is his name, I've seen a lot of fellows, But they're not just the same."	
DEAN ROLFE	Cameron.	CHARLES PENNY	Cameron.
Track Squad, 1926. "Is he really as mean as he looks, Or did he get his expression from books?"		Boys Glee Club. "Why aren't they all as lazy as I, Then no one would ever have to try."	
RUTH SHACKELFORD	Cameron.	ERA SLOAN	Cameron.
"A clever, stately Soph am I In everything I do or try."		Girls Basketball Team, 1926. "If might be right, She'll win every fight."	

The MYSTIC



WAYNE MAYES

Cameron.

"In Hook's he spreads his nice,
broad grin
And this helps to bring the cus-
tomers in."

MARJORIE SIMMONS

Cameron.

"Silence is golden in this little girl,
Of foolishness her thoughts never
did swirl."

CAROL GILLIS

Cameron.

Orchestra;
Vice-President, Sophomore Class.
"His musical talent is a boon,
With which he puts the world in
tune."

MAY FOWLER

Maysville, Mo.

"Intelligent and quiet, cheerful and
kind,
She's the sort of a girl that's
hard to find."

CATHERINE GALE

Cameron.

Girls Glee Club; Campfire.
"Her heart is not more sunny than
her hair,
She's just as carefree as the morn-
ing air."

ROBERTS MIDDAUGH

Cameron.

"A student quiet is this boy,
Who in solitude finds his joy."

ORA BELL

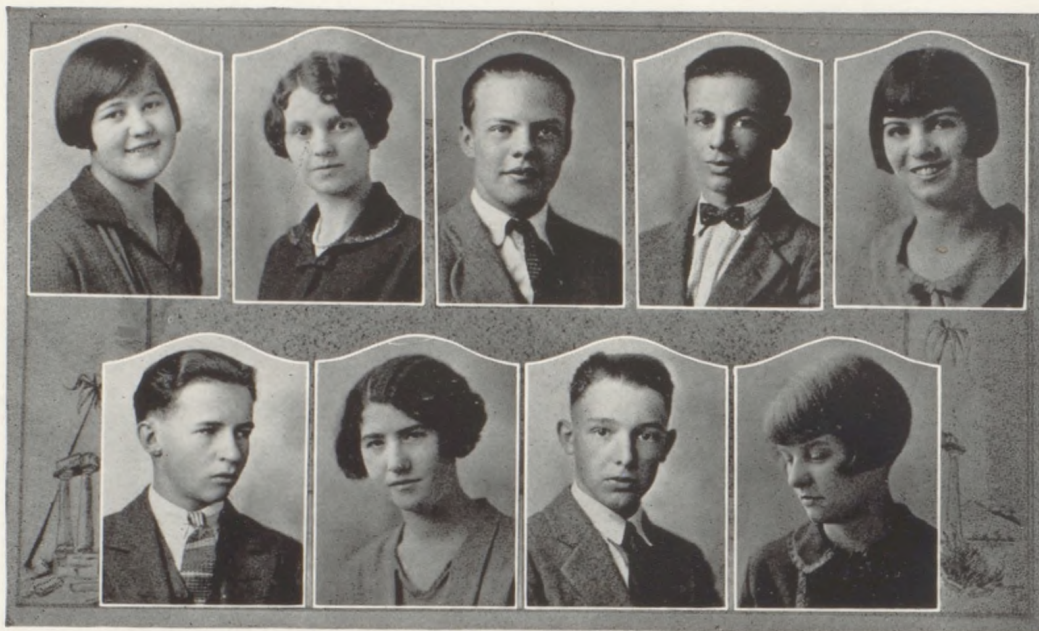
Cameron.

Girls Glee Club.
"She's always bright and rather gay,
Even if things don't go her way."

BRYAN STOFFLE

Cameron.

"Bryan is quiet, but seldom blue,
In most of his studies he gets
through."



RUBY McPHERSON Cameron. RALPH ENTRIKIN Cameron.

"Care will kill a cat,
So be merry at that."

"I love one lassie,
But they all think me classy."

MARTHA BUCKLEY Cameron. MARGARET JONES Cameron.

"Wouldn't you like to be like me,
Demure and happy, as you can
see."

Girls Basketball Squad;
Girls Glee Club; Campfire.
"Her curls are real,
So they have a great appeal."

RUSSELL WILLIAMS Cameron. ODUS WHITEAKER Cameron.

"Little boy with cheeks of tan,
We wonder if you'll make a man."

"No matter where his abode,
He'll always carry the heaviest
load."

EARL MULLINIX Cameron. MILDRED KELSEY Cameron.

Track Squad, 1926; Vice-President,
Sophomores, 2nd Semester; Boys
Glee Club; Boys Quartet.
"And when a lady's in the case,
All other things must needs give
place."

Girls Glee Club; Girls Quartet;
Campfire.
"If music be the food of love,
She'll bring the joys of Heaven
from above."

FRANCES WRIGHT Cameron.

Girls Basketball Squad.
"The girl with the laughing eyes,
Who cannot be bothered with tears
or sighs."

LOUISE OSBORN
QUEEN OF 1926.

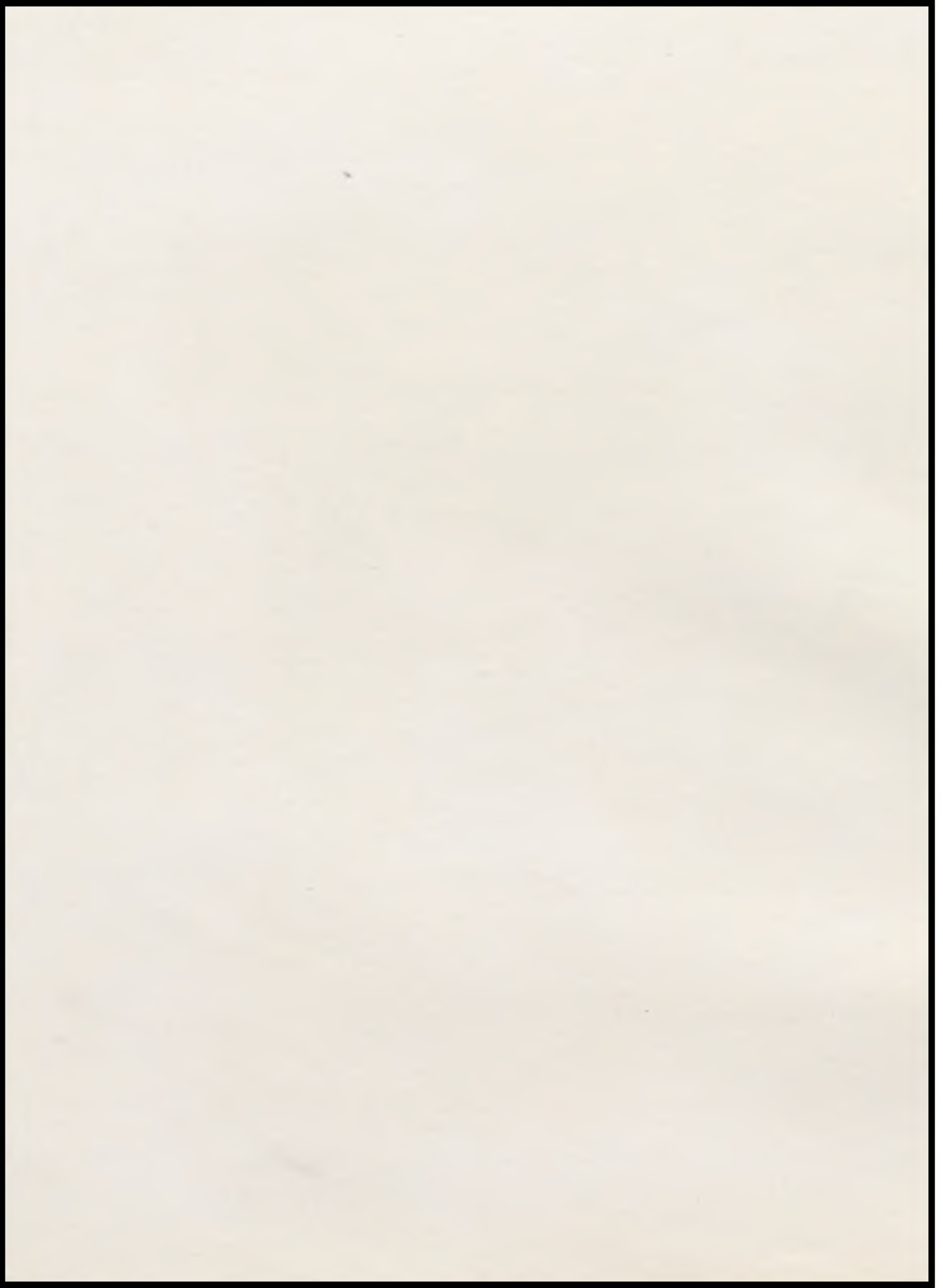


PHOTOS
By
A.S. BROWN.





ATHLETICS



The MYSTIC



SAM T. UTZ

Director of boys Physical Education and Coach of Football, Basketball and Track.

The honor of assembling our boys team goes to Coach Utz. Cameron's future prominence in athletics is assured with a man of this caliber at its head. He is worthy of all the praise we can bestow upon him.

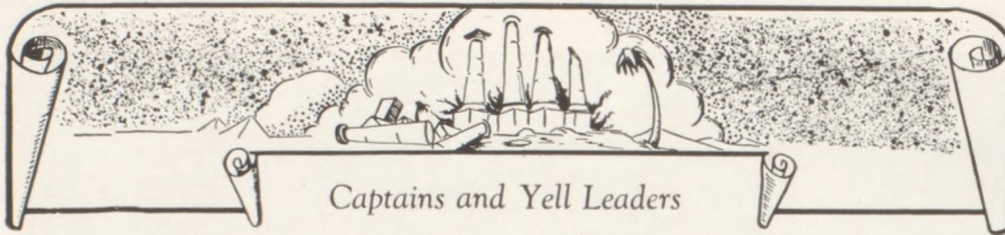
RUTH J. CLINE

Director of girls Physical Education and Coach of girls Basketball and girls Track.

Altho the team this year did not meet with the greatest success in regard to winning games, much credit is due to the Coach for the team that will develop from this year's squad. Her willing work and happy personality is appreciated by all.



The MYSTIC



Captains and Yell Leaders



HERBERT MUDERS ALICE STADE ORVILLE OFFUTT WAYNE LEACH
Basketball Captain. Basketball Captain. Track Captain. Football Captain.
LOUISE SHIRTS IVAN ZANCKER BETTY JOE WILLIAMS
Soph. Cheer Leader. Junior Cheer Leader. Senior Cheer Leader.

Cameron High is proud of each of her captains, and we do not hesitate to say that each of her teams was led ably by them. To be the Captain of your team is an honor that should not be misapplied, and we feel that each of the captains this year has taken the responsibility well.

Much credit also goes to the cheer leaders who led the student body, instilling much pep into it. They were the main factors in the producing of school spirit.





Football Squad



FIRST ROW: Left to right: R. Howard, Sheldon, Mayes, Spragg, Thompson, Packard, Offutt.

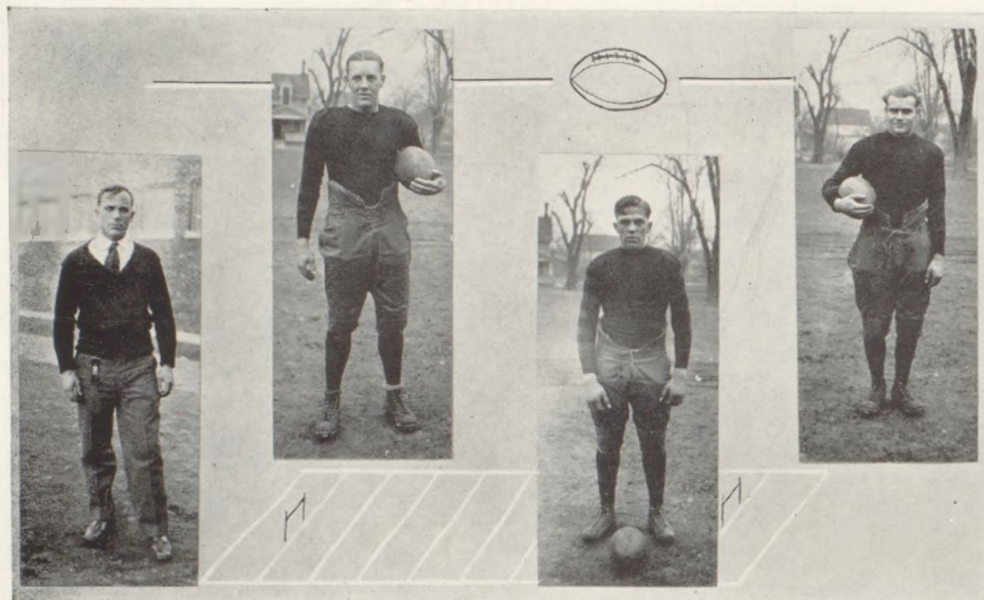
SECOND ROW: Shaw, Ausman, Phillips, Partin, I. Kimes, Jones, Bender, Stone.

THIRD ROW: Coach Utz, H. Kimes, Pittman, McDaniels, Morton, Capt. Leach, Miller, Carpenter, Muders, Kanan, Simpson, Selle.

Surely enough has been said about the school's football team, so we will devote this space to the attention of the ones who helped make the first team, namely the "Scrubs."

The second team deserves much credit for the work they did for C.H.S. They were out every night to help make the first team what it was, and when it came time to receive the honors, the scrubs received none. Nevertheless, the scrubs of this year will be the first team of years to come.





COACH SAM T. UTZ

St. Joseph, Mo.

In football Coach Utz has instilled into his men the spirit of fighting hard, but clean; of winning modestly and losing graciously. His energy, his thought, his time, all have contributed toward the phenomenal success of the athletics of C. H. S.

WAYNE LEACH, "Chick"

Cameron, Mo.

165 lbs.

5 ft. 11 in.

20 yrs. old

"Chick" Leach, captain and halfback of the 1926 Dragons, characterized himself as one of the most spectacular ground gainers ever produced in old C. H. S.

JOHN SPRAGUE, "Brigham"

Chicago, Ill.

185 lbs.

6 ft.

20 yrs. old

Sprague, center. We can never think of the 1925 season without thinking of the Big Swede encouraging the linemen by "talking it up" and discouraging the opponents by foiling many of their moves. He possessed the uncanny ability to diagnose plays and unnerve his opponents.

PAUL CARPENDER

Cameron, Mo.

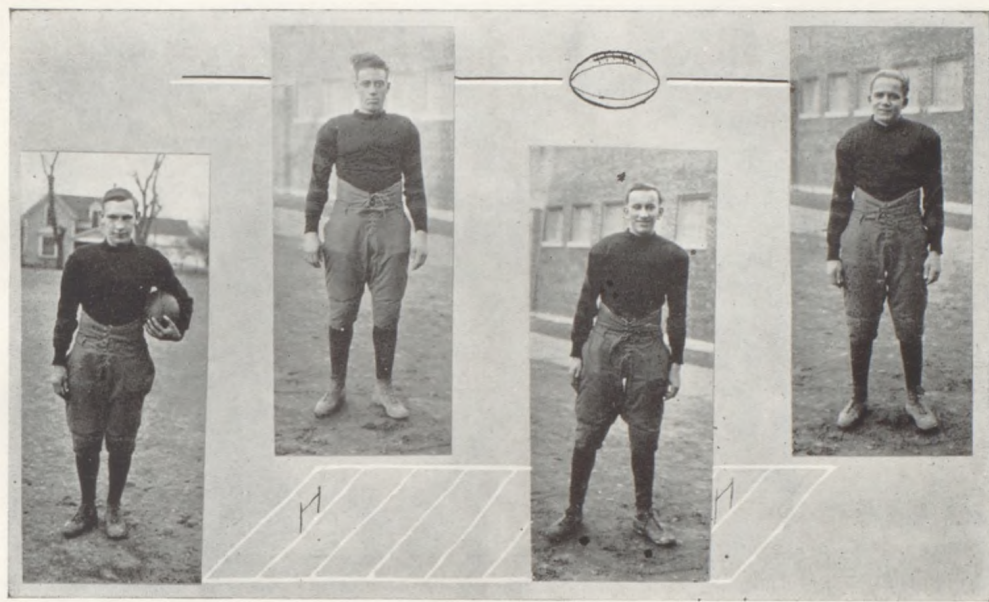
160 lbs.

5ft. 9 in.

18 yrs. old

Paul is one of the hardest hitting fullbacks ever developed in Cameron. Before him the opposing line usually crashed. We welcome his plunges on the Dragon offensive of 1926.

The MYSTIC



HERMAN PHILLIPS, "Barney" Burlington, Iowa.
 138 lbs. 5 ft. 5 in. 18 yrs. old

"Barney" was a new man, clever, shifty, and speedy. He showed great promise as a back field man.

WARDELL SHELDON, "Vici" Independence, Mo.
 180 lbs. 5 ft. 9 in. 17 yrs. old

"Vici," tho new to us at the first of the year, won his laurels by giving the most he could all of the time. He will be one of our mainstays another year.

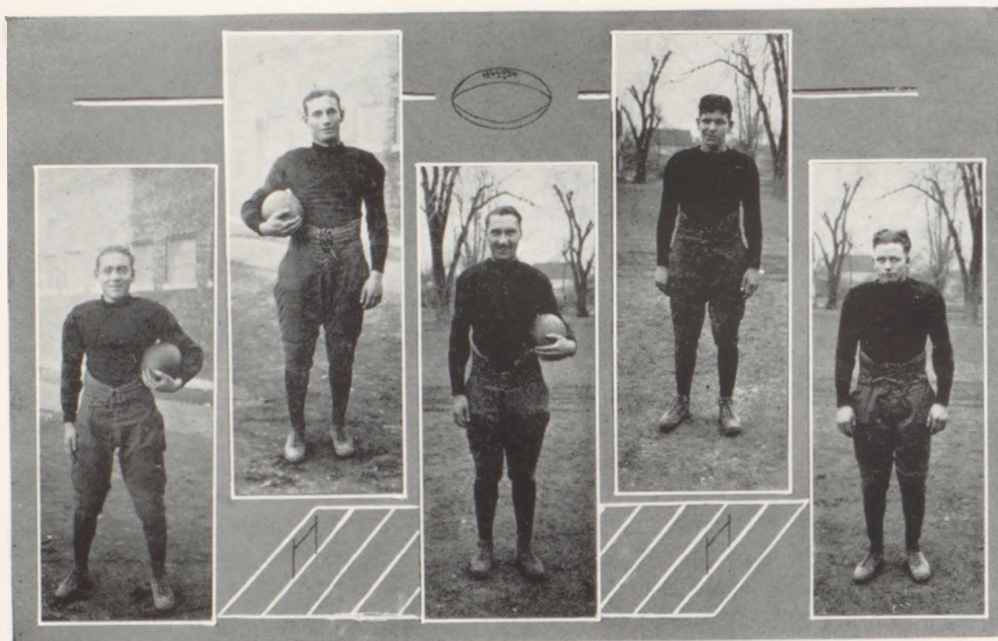
IRA KIMES, "Tud" Cameron, Mo.
 145 lbs. 5 ft. 10 in. 17 yrs. old

"Tud" is one of those ends who tries to think and act faster than his opponents. His ability and aggressiveness are to be more highly respected by opponents another year.

NATHAN JONES, "Cracker" Cameron, Mo.
 135 lbs. 5 ft. 6 in. 17 yrs. old

Nate was small, but never was there a lad more anxious to do his part. Fear was unknown to him. His 135 pounds was easily the equivalent of 170 of his opponent.

The MYSTIC



BEN AUSMAN, "Bennie"
135 lbs.

5 ft. 6 in.

Cameron, Mo.
18 yrs. old

"Bennie" was a clever, heady, and dependable field general, always giving his best for the interests of the team.

HERBERT MUDERS, "Pete"
165 lbs.

5 ft. 9 in.

Cameron, Mo.
18 yrs. old

"Pete," altho a new man at the game, demonstrated the results that may be gained thru an ardent desire to accomplish a task well. He could always be counted upon for the calmness of a veteran.

NOVA MILLER, "Levi"
185 lbs.

6 ft. 1 in.

Cameron, Mo.
19 yrs. old

Novy was a wonderful asset to h's team as a line plunging fullback. He was highly respected by his opponents for his defensive ability.

ERNEST THOMPSON, "Preacher"
165 lbs.

5 ft. 11½ in.

St. Joseph, Mo.
18 yrs. old

E. B., altho a one-year man, won his place on the 1925 gridiron machine due to his persistent efforts. His ability as a lineman should continue in his college career.

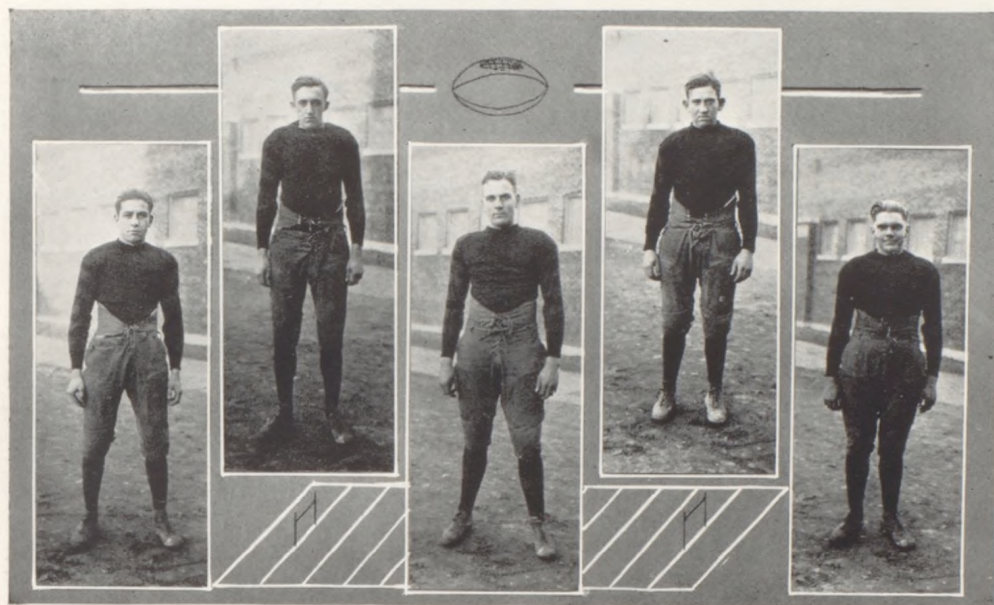
ORVILLE OFFUTT, "Offutt"
130 lbs.

5 ft. 7½ in.

Cameron, Mo.
19 yrs. old

Orville, our diminutive end, won for himself and his school many honors. Speed, aggressiveness, and determination characterized his actions.

The MYSTIC



MELVIN MAYES, "Punk"

175 lbs.

5 ft. 11 in.

Cameron, Mo.

19 yrs. old

"Punk," altho new at the game, called upon all of his knowledge of the grappling game, and developed into a powerful and effective lineman.

RAYMOND MORTON, "Pete"

185 lbs.

6 ft. 1 in.

Cameron, Mo.

20 yrs. old

"Pete" was always in the game, doing all he could to promote plays and to hinder those of the opponents. We shall miss him next year.

ORION PACKARD, "Pete"

180 lbs.

6 ft. 1 in.

Cameron, Mo.

19 yrs. old

"Pete" just began to realize his possibilities toward the end of the season. Altho a new man, his strength in the line was one of our biggest assets.

FORREST SIMPSON, "Fat"

160 lbs.

5 ft. 8½ in.

Cameron, Mo.

18 yrs. old

"Fat" is another boy new at the game, but an end who should develop into a dependable man. He will be wearing the Dragon moleskins two more years.

ROBERT SELLE, "Bob"

185 lbs.

5 ft. 10 in.

Searcy, Ark.

18 yrs. old

Selle was the possessor of untold strength, doomed to become a most powerful lineman with a little more experience.

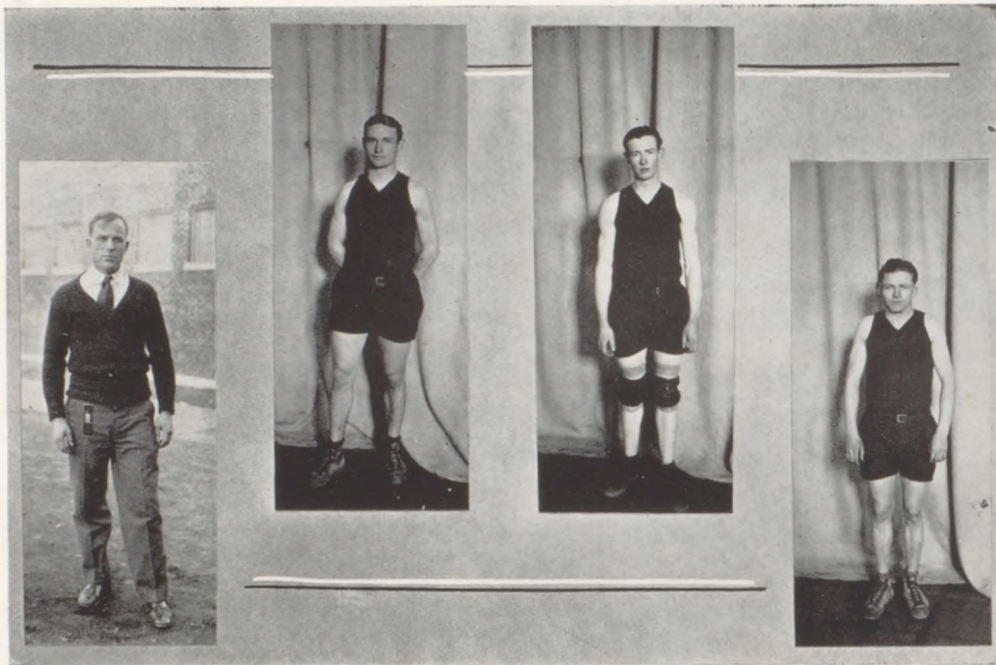


WITH	AT	DATE	C.H.S.	OPPONENTS
Northeast, K.C.	Cameron	Oct. 2	0	9
Central	St. Joseph	Oct. 10	6	25
Trenton	Cameron	Oct. 15	27	0
Maysville	Maysville	Oct. 23	6	20
Lafayette	Cameron	Oct. 30	13	0
Maryville	Maryville	Nov. 6	21	13
Chillicothe	Cameron	Nov. 13	7	0
Liberty	Cameron	Nov. 26	7	7
Total			87	74



Basketball Resume'

WITH	AT	DATE	C.H.S.	OPPONENTS
Easton	Cameron	Dec. 22	28	17
Hamilton	Cameron	Jan. 8	35	11
Breckenridge	Cameron	Jan. 15	37	15
Lafayette	Cameron	Jan. 23	17	16
Liberty	Cameron	Jan. 29	19	14
Trenton	Trenton	Feb. 5	14	11
Chillicothe	Cameron	Feb. 10	28	27
Benton	St. Joseph	Feb. 13	12	24
Benton	Cameron	Feb. 20	23	18
Liberty	Liberty	Feb. 26	22	28
Chillicothe	Chillicothe	Mar. 4	26	32
Trenton	Cameron	Mar. 5	27	10
Hamilton	Maryville	Mar. 10	26	16
Rockport	Maryville	Mar. 11	15	10
Burlington Jet.	Maryville	Mar. 11	28	13
Maryville	Maryville	Mar. 12	16	30
Filmore	Maryville	Mar. 12	31	20
			Total	404
				312



SAM T. UTZ

St. Joseph, Mo.

With his superior knowledge of the game, Sam was an able tutor of the court sport, instilling the spirit of fair fight into his men.

HERBERT MUDERS

Captain and Guard

Cameron, Mo.

"Pete" is recognized by coaches as one of the most polished basketball players in Northwest Missouri. He is calm, deliberate, dependable, and a leader whose equal we seldom, if ever, behold.

LOUIS KANAN

Captain-elect, Forward

Cameron, Mo.

"Shanty" is a natural basketball player, always playing the game. His "Irish," which spells determination, coupled with his ability and desire to lead a victorious team, is a wonderful asset for the 1927 basketekers.

ORVILLE OFFUTT

Forward

Cameron, Mo.

Orville was one of those forwards who often garnered points to snatch a game from the fire. He covered the floor well and was a splendid defensive player.



The Dragons, although a little erratic in some of their contests, as a whole played a most successful season, annexing almost all the long scores. They won all the games played on the home court, and represented C. H. S. on the floor at the Maryville Basketball Tournament, where they were defeated in the finals of Class A. They returned, however, winners of the consolation match. The season, taken all in all, was a most successful one.



THE DRAGONS

FIRST ROW—Warner, I. Kimes, Muders, Shaw, Zaueker.

SECOND ROW—Offutt, L. Kanan, Ausman.

THIRD ROW—Utz, O. Kanan, Leach, H. Kimes, Partin.

Girls' Basketball

Although the girls did not have a championship team this year, they played good ball and worked hard. They were handicapped by having only new material, but they made a good showing under the circumstances. Their schedule was filled and several games were closely contested. Under the able leadership of Captain Alice Stade, the clean play of Cameron High's Dragonettes was upheld.



THE DRAGONETTES

FIRST ROW—Brower, Stucker, Sturgis, Myers, O'Neal, Temple, Armstrong.

SECOND ROW—L. Shirts, Catheart, Stade, M. Burkett, Easter, Rempfer.

THIRD ROW—Sloan, Morton, I. Shirts, Jones, Holiday, Williams, Coach Cline.



RUTH JEAN CLINE Coach Maryville, Mo.

Coach Cline's ardor and attention to her work brought fruits in the exceptionally large number of girls out to practice during the entire season. Her personality and knowledge of the game kept the girls giving their best efforts.

ALICE STADE Captain and Forward Cameron, Mo.

Alice was a good steady player and could always be depended upon. As a captain she always had high ideals for her team, and instilled in the team a spirit of fair play. This was her first year and we are sorry that she will not be with us again.

ILAH MYERS Guard Cameron, Mo.

Here was a guard that will be hard to replace. One might think her size would handicap her, but it didn't. She was fast, tireless, and guarded her opponents well. We shall miss her next year.

MARIE O'NEAL Running Center Cameron, Mo.

Quick, active and a good shot, describes Marie's way of playing. She played hard and was quick in out-thinking her opponents. Marie will also be missed next year.

FRANCES CATHCART Forward Cameron, Mo.

"Toots" was fast on the floor, a fine shot at the basket, and hard to guard. She gave all she had in the game and fought on to the end. She realized the value of teamwork and always played a clean game. "Toots" will be with us another year.

The MYSTIC



MAE BURKETT Guard Cameron, Mo.
 Mae was an exceptionally good guard. She was swift on the floor, handled the ball with ease, and never let her forward get away from her. We expect more than ever of her next year.

EFFIE MORTON Guard Cameron, Mo.
 Effie was always known for steadiness, played the game according to the rules. She was faithful and realized the value of teamwork. She returns next year.

EVA TEMPLE Running Center Cameron, Mo.
 Eva has shown her ability in basketball by her good passing and floor work. She got the ball and played the ball and made a clean record in her playing. She returns next year.

ERA SLOAN Running Center and Forward Cameron, Mo.
 Era was a steady, consistent player in whatever position she was placed. She was always there when needed—fighting to the last minute. We will watch her work closely next year.

CLARA ARMSTRONG Jumping Center Cameron, Mo.
 When it comes to jumping Clara has the spring. Her floor work was unusually good, and her ability to handle the ball marked her as a real player. Clara has two more years with us.



Basketball Resume'

WITH	AT	DATE	C.H.S.	OPPONENTS
Altamont	Cameron	Jan. 23	7	24
Chillicothe	Cameron	Jan. 28	21	26
Trenton	Trenton	Feb. 4	11	34
Chillicothe	Chillicothe	Feb. 19	14	31
Trenton	Cameron	Mar. 4	11	12
Total			54	127



Track Resume'

MEET	AT	DATE	RESULTS
Maysville	Cameron	Apr. 10	Maysville, 63 55
William Jewell	Liberty	Apr. 17	Cameron, 3rd place
Quadrangular	Cameron	Apr. 21	Cameron, winner
Maryville	Maryville	Apr. 25	Cameron, runner-up
Clinton County	Plattsburg	May 2	Cameron, winner
Missouri Wesleyan	Cameron	May 8	Cameron, runner-up

With a wealth of green material, Cameron was unable to cope with the experienced tracksters of Maysville, and lost the meet then, only by the two relays.

In the William-Jewell meet held at Liberty, the Cameron Dragons placed in events sufficient to land the team in third place. It was in this meet that Miller broke the meet discus record, by a throw of 117 feet, 4 inches.

In the Quadrangular meet held between Lathrop, Pattonsburg, Plattsburg and Cameron, The Dragons easily walked away with the honors.

At the Maryville meet the team proved its mettle by running away with the medley relay, and almost taking the half-mile relay, which would have meant the meet for Cameron. The Medley team was composed of Muders, Offutt, Ausman and Wylie. Miller took second in the shot and fourth in the discus.

The annual Clinton county meet was easily won by Cameron. The results were as follows: Five firsts, three seconds and two thirds, as well as first in the medley relay and the half-mile relay. Offutt set a new county record for the 440, while Miller broke the county records in the shot and discus.

In the May day meet, held by Missouri Wesleyan, The Dragons copped second honors, thereby giving them the beautiful runners-up cup. This was the fifth cup received by The Dragons. Capt. Wylie set a new record in the half mile run with a time of 2:04.3.



DALE WYLIE Capt., Half mile and Medley Cameron, Mo.
 This peerless Dragon leader, it is said, never lacked the grit to finish and broke several records in doing so.

ORVILLE OFFUTT Capt.-Elect, 440 and Medley Cameron, Mo.
 This 440 flash hardly ever failed to place well up among the firsts, and his pace will be hard to follow in years to come.

JAMES KLEPPER, "Denny" Mile Run Cameron, Mo.
 "Denny" was made up of the kind of stuff that it takes to make a mile runner, consequently he made a good mark upon the cinders.

HERBERT MUDERS Shot, Hurdles and Relays Cameron, Mo.
 "Pete" was a consistent performer in any of the many events he entered. Many laurels should fall to his credit in the future.

BEN AUSMAN Dashes and Relays Cameron, Mo.
 "Bennie" can always be depended upon to start and finish with the best of them in any race he enters.

NOVA MILLER Shot and Discus Cameron, Mo.
 When "Levi" was tossing the weights, there were points being added to the Dragons' total score.



VICTOR DUSENBERRY Hurdles Cameron, Mo.

“Vic” worked hard and accomplished much. For one that can thoroughly be depended upon, he is not surpassed.

HOLWITH PARTIN Pole-vault Cameron, Mo.

“Holly” being a new man, and making his letter, should not disappoint us in the future in garnering points.

WAYNE LEACH High Jump Cameron, Mo.

“Chick” was a man who placed in his event when the points were needed most.

EWING HUNTER Half-mile and Relays Cameron, Mo.

A careful, conscientious trainer who will improve with experience.

RAYMOND MORTON Mile Run Cameron, Mo.

“Pete” was of the hard working kind and always reached his goal.

The MYSTIC



Half-Mile
Relay
Team



Mile
Relay
Team



Medley
Relay
Team

Relay Teams



A Few of Cameron High's Trophies



With the material pictured below, The Dragons will well represent the colors of C. H. S. and the gold and black will wave triumphantly through the points gained by the followers of the track and field.



FIRST ROW: Warner, Zancker, Hunter, Dusenberry, Muders, Ausman, Williams.

SECOND ROW: Pittman, Rolfe, Bothwell, Capt. Offutt, McDaniels, Kanan, I. Kimes, Sheldon, Partin.

THIRD ROW: Waugh, Stone, King, Entriken, Auten, Van Gundy, Bender, H. Kimes, Miller, Coach Utz.



ORGANIZATIONS

1870



Debate

Cameron aspired to represent Northwest Missouri in the State Debate Contest at Columbia, but fell a little short of her aspirations. However, with five victories and three defeats, the debaters felt that the season was far from a failure.

It is the hope that the installation in C. H. S. of the Ninety-sixth Chapter of the National Forensic League will serve as a stimulus for greater work in debate.

The results of the season follow:

WITH	AT	Supporting	Dec'sion for
Stewartsville	Stewartsville	Negative	Affirmative
Easton	Cameron	Affirmative	Affirmative
Stewartsville	Cameron	Negative	Negative
Easton	Easton	Negative	Negative
Osborn	Cameron	Negative	Affirmative
M. W. C.	Cameron	Negative	No decision
Trenton	Cameron	Negative	Negative
Maryville	Maryville	Negative	Affirmative



Irving

Mary M. Matlick, Coach

Betty Joe Williams

The MYSTIC



Roy Todd Editor	Irene Phelps Assoc. Editor	Wilson Thomas Faculty Advisor
Ben Ausman Bus. Mgr.	Orin Kanan Advertising	Ernest Thompson Advertising
Ira Kimes Jr. Representative	Maurine Sloan Literary Editor	Kathleen Hogan Literary Editor
Orene Sydebotham Sport Editor	Louise Osborn Kodaks	Herbert Muders Sport Editor
		Betty Jo Williams Jokes

The MYSTIC



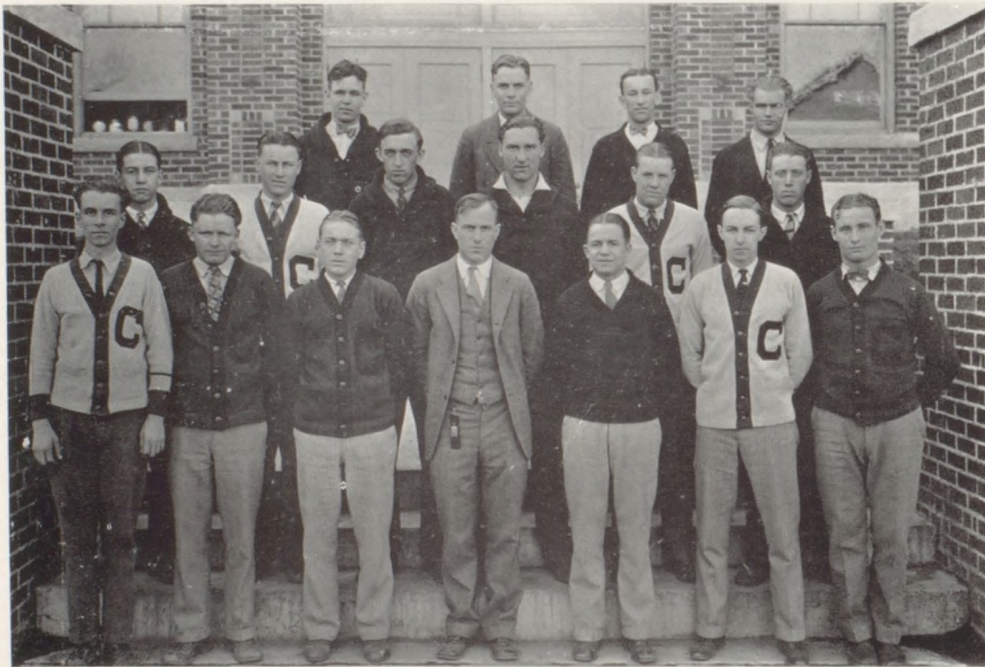
Victor Dusenberry Editor	Mildred England Asst. Fac. Adv.	Mrs. Warner Fac. Advisor	Lorraine Shirts Assoc. Editor
Orin Kanan Bus. Mgr.	Orene Sydebotham Sports	Ruth Quigley Jr. Representative	Ernest Thompson Bus. Mgr.
Ben Ausman Sports	Louise Osborn Sr. Representative	Helen Schneider Soph. Rep.	Herbert Muders Sports
Esther Shaw Sr. High	Representative Louise Gulliland		Jr. High Representative

The MYSTIC



Herbert Muders ----- President
Wayne Leach ----- Vice-pres.
Louis Kanan ----- Sec'y-Treas.

The "C" Men's Club of C. H. S. has as its purpose the enforcement of a rule prohibiting the wearing of school letters by those who are not official owners of same. It is an honorary club, limited in its membership to those who have won letters in three major sports.



FIRST ROW: Hunter, Ausman, Coach Utz, Jones, Dusenberry, Muders.
SECOND ROW: Mayes, Partin, Morton, Miller, Leach, Sheldon.
THIRD ROW: Thompson, Packard, I. Kimes, Carpender.



Victor Dusenberry President
Herbert Muders Vice-Pres.
Ewing Hunter Sec'y.-Treas.

The Hi-Y held their meetings regularly at the noon hour every Tuesday. They were always favored by a talk from one of the ministers or the business men of the town.

As an organization they put forth the main idea of clean speech, clean living, and clean sportsmanship.



FIRST ROW: Mr. Thomas, Zancker, Thompson, Hunter, Coen, Ausman, Todd, Mr. Sweem.
SECOND ROW: Mr. Utz, Mr. Gross, Foster, Bryant, Arnold, Dusenberry, Farris, Muders.
THIRD ROW: Williams, Mr. Shipley, Mr. Elliott, I. Kimes, Easter, Morton, Warner.



Ernest Thompson ----- President
Ben Ausman ----- Secretary
Orin Kanan ----- Treasurer
Victor Dusenberry ----- Asst. Treas.

The Board of Control has as its purpose the handling of all moneys taken in and paid out by any school activity. On it are representatives of each of the classes. The Junior High School has its representatives who sit in the meetings without a vote. An itemized statement of all funds is published from time to time, thus informing the public of the disposition of all the money obtained.



FIRST ROW: Thompson, O. Kanan, Williams, Mr. Elliott.
SECOND ROW: Warner, Dusenberry, Shirts, Schneider.

The MYSTIC



Orchestra

PERSONNEL

Director: Flora Lee Sims.

Violins: Blanche Crow, May Morton, Ross Kelsey, Earl Morton, Clair Luce, Merl Williams, Almer Sheehy, Maurice Cater, Glenn Peters, Dennis Dorsey.

Drums: James Russell.

Clarinet: Billie Quigley.

Cornets: Howard Sheehy, Ray McCommas, Louise Shirts, Kermit Knoch, Carroll Gillis.

Piano: Lois Bryan, Frances Eaves.

Saxophones: Richard Bowman, Pennington Thomas, Donald Eaves.

Mellophone: Dordie Bowen.

Trombone: Ewing Hunter.



FIRST ROW: Crowe, M. Motron.

SECOND ROW: Russell, E. Morton, Luce, Williams, Bryan, F. Eaves, Miss Sims, A. Sheehy, Cater, Peters, Dorsey.

THIRD ROW: Quigley, Sheehy, McCommas, Shirts, Knoch, Gillis, Bowman, Thomas, Bowen, Hunter, D. Eaves.



The Girls' Glee Club of this year was not organized as it has been in previous years, but was conducted as a regular class. The Glee Club met on Mondays and Wednesdays from 3:15 to 4:00.

The club has made several appearances at different churches, and has given concerts at different times.

From the membership of the club a quartet and an octet has been formed to compete in the several spring contests.



FIRST ROW: Phelps, Kelsey, Slom.

SECOND ROW: West, Biggerstaff, Reed, Quigley, Belt.

THIRD ROW: Warner, Osborn, Meek, Dunnington, Miss Sims, Dooley, O'Neal, Campbell, Carpenter.

FOURTH ROW: Mallen, Porter, Gale, Kenney, Cousins, Burkett, Jones, Urban, Hancock, Wells, Becknell, Baker.



JUNIOR HIGH SCHOOL





LEOLA RUTH TURNER

Mexico, Mo.

A. A., Hardin College, 1925; Cameron Junior High School, 1926.

Citizenship, American History, European History, Eighth Grade Sponsor.

ESSIE BING

Cameron, Mo.

Student, Northwest Missouri State Teachers College and Missouri Wesleyan College; Extension work, State Teachers College, Kirksville. Missouri; Cameron Public Schools, 1918-'25; Cameron Junior High School, 1925-'26.

Junior High School Mathematics, Eighth Grade Sponsor.

MARY BRIDGES

Cameron, Mo.

A. B. in Language, Missouri Wesleyan College, 1925; Cameron Junior High School, 1925-'26.

Junior High School English, Seventh Grade Sponsor.

VIRGINIA KEMPER

Cameron, Mo.

A. A., Stephens College, 1923; A. B. in Philosophy, Missouri Wesleyan College, 1925; Teacher, Greencastle, Missouri, 1924; Cameron Junior High School, 1925-'26.

Geography, Citizenship, Spelling, Penmanship, Elementary Science, Seventh Grade Sponsor.

SENIOR HIGH TEACHERS HAVING CLASSES IN JUNIOR HIGH

Mrs. Warner	Miss Rausin	Miss Dickerson
Mr. Thomas	Mrs. Davis	Mr. Utz
Mr. Gross	Miss Hardinger	Miss Cline
Miss Bender	Miss McCurry	Miss Sims



FIRST ROW: Left to right:

Charles Caldwell
Maudie Carter
Wesley Callinger
Wilford Crawford

SECOND ROW:

Cameron.	Eileen Brower	Cameron.
Cameron.	Bulah Bird	Cameron.
Cameron.	Maxwell Buck	Cameron.
Cameron.	Helen Chivens	Cameron.
	Louise Borten	Cameron.
	Florence Connor	Cameron.
	Faul Cutler	Cameron.
	Bulah Brown	Kidder, Mo.

THIRD ROW:

Deborah Baldwin	Cameron.
Harold Casey	Cameron.
Grace Armstrong	Cameron.
Howard Broder	Cameron.
Arnold Brower	Cameron.
Lael Currell	Cameron.
Mildred Brown	Cameron.



FIRST ROW: Left to right:

Dorothy Currell
Eugene Ens'gn
Catherine Cline

SECOND ROW:

Cameron. LaVera Davis
Cameron. Blanch Crowe
Cameron. Donald Eaves
Dorothy Eckert
Reve Fite
Dorothy Crawford
Jesse Foster
Louise DeShon

Cameron.
Cameron.
Cameron.
Cameron.
Osborn, Mo.
Cameron.
Cameron.
Cameron.

THIRD ROW:

Muriel Davis
Helen Constance
John Fein men
Lowell Folsom
Dale Constance
Dennis Dorsey
Hyla Dice
Anna Carrol

Cameron.
Cameron.
Cameron.
Cameron.
Cameron.
Cameron.
Cameron.

The MYSTIC



Third Year



FIRST ROW: Left to right:

Louise Gilliland
 Anna McDaniel
 Mable Gregory

SECOND ROW:

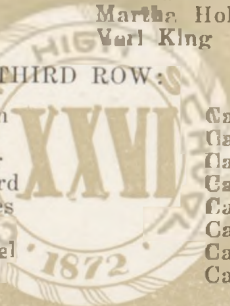
Cameron.
 Cameron.
 Turney, Mo.
 Evelyn King
 Opal Hancock
 Kermit Knoch
 Cuenavere Knoch
 Harold Honeycutt
 Martha Holtzapple
 Verl King

Cameron.
 Maysville, Mo.
 Cameron.
 Cameron.
 Cameron.
 Cameron.

THIRD ROW:

Loren Martin
 John Groebe
 John Kemper
 Harry Howard
 Hadley Kimes
 Clyde Garvin
 Paul McDaniel
 Alma Gibson

Cameron.
 Cameron.
 Cameron.
 Cameron.
 Cameron.
 Cameron.
 Cameron.



The MYSTIC



FIRST ROW: Left to right:

Kenneth Price
Dorothy Smart
Mildred Smith
Virginia Porter

Cameron.
Cameron.
Turney, Mo.
Osborn, Mo.

SECOND ROW:

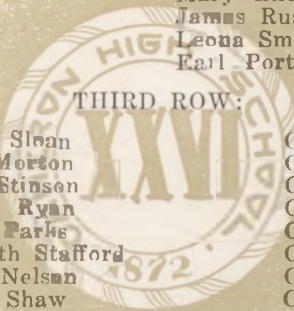
Frances Roberts
Quintus Miller
Dessie Lee Sweat
William Mallory
Mary Ellen Pyle
James Russell
Leona Smith
Earl Porter

Cameron.
Cameron.
Cameron.
Cameron.
Jamesport, Mo.
Cameron.
Cameron.
Cameron.

THIRD ROW:

Goldie Sloan
May Morton
Faye Etinson
Leland Ryan
Lloyd Parks
Kenneth Stafford
Helen Nelson
Ester Shaw

Cameron.
Cameron.
Cameron.
Cameron.
Cameron.
Cameron.
Cameron.
Cameron.



The MYSTIC



Third Year



FIRST ROW: Left to right:

Doral Shaw
Emma Witt
Elizabeth Whitaker

SECOND ROW:

Cameron.	Mary Whitaker	Cameron.
Cameron.	Dor's Waugh	Cameron.
Cameron.	Eugene Trice	Cameron.
	Grace Wiley	Cameron.
	Dorothy Stade	Cameron.
	Frances Watson	Cameron.
	Almer Sheehy	Cameron.
	Annabel Swearingen	St. Joseph, Mo.

THIRD ROW:

Leland Warner	Winston, Mo.
Laverne Williams	Cameron.
Amelia Theilmann	Cameron.
Rolland Selle	Cameron.
Corrine Smith	Cameron.
James VanWinkle	Cameron.
Clarence Zimmerman	Cameron.

The MYSTIC



FIRST ROW: Left to right:

Ethelyn Ensign
Donald Baker
Lucile Atkinson
Donald Gillis

SECOND ROW:

Cameron. Josephine Fernimen
Cameron. Carson Collins
Cameron. Lois Davis
Cameron. John Elmore
Lorna Brockman
Phillip David
Freda Mae Cline

Cameron.
Cameron.
Cameron.
Cameron.
Turney, M.
Cameron.
Cameron.

THIRD ROW:

Ruth Holiday
Reba Biggerstaff
Glenwood Gilliland
Nathan Byers
Richard Bratton
Franklin Elston
Martha Hutton
Dorothy Carter

Cameron.
Cameron.
Cameron.
Cameron.
Cameron.
Cameron.
Cameron.



FIRST ROW: Left to right:

Billie Quigley
Justin King
Oliver Peters

SECOND ROW:

Cameron. Quincy Kemper
Cameron. Margaret Maxwell
Cameron. Chester King
Mary Meek
Frank Howard
Lula Mae Pittman
Donald Pittman
Stella Norwood

Cameron.
Cameron.
Cameron.
Cameron.
Cameron.
Cameron.
Cameron.
Cameron.

THIRD ROW:

C. A. O'Neal
Dorothy Park
Opal Lee
Roy Rider
Claire Luce
Ollie Harter
Winnagene Kemper
Glenn Petters
Joseph Keltner

Cameron.
Cameron.
Cameron.
Cameron.
Cameron.
Cameron.
Cameron.
Cameron.



FIRST ROW: Left to right:

Frazier Staples
Lois Williams
Durl Rolfe

SECOND ROW:

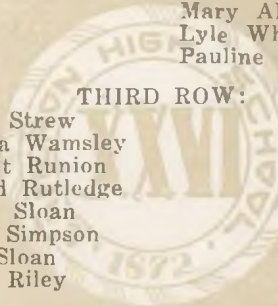
Cameron. Nellie Simpson
Cameron. Laura Williamson
Cameron. Howard Sheehy
Vera Wise
Hazel Shackelford
Mary Alice Wingate
Lyle Whitaker
Pauline Sheldon

Cameron.
Cameron.
Cameron.
Cameron.
Cameron.
Cameron.
Cameron.
Cameron.

THIRD ROW:

Jewel Strew
Martha Wamsley
Harriet Runion
Donald Rutledge
Orpha Sloan
Ruby Simpson
Paul Sloan
Ralph Riley

Cameron.
Cameron.
Cameron.
Cameron.
Cameron.
Cameron.
Cameron.





FIRST ROW: Left to right:

Florence Margaret Dorsey
 Ruth Baker
 Aubrey J. Brown
 Lois Ballinger
 Fred M. Clevenger

Cameron.
 Cameron.
 Cameron.
 Cameron.
 Cameron.

SECOND ROW:

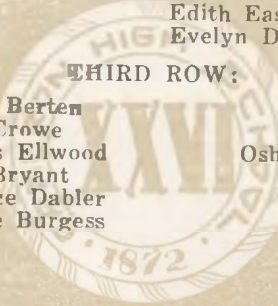
Will am Eaves
 Mary Elizabeth Allen
 Junior DeShon
 Marian Buck
 John Easter
 Edith Easter
 Evelyn David

Cameron.
 Cameron.
 Cameron.
 Cameron.
 Cameron.
 Cameron.
 Cameron.

THIRD ROW:

Helen Berten
 Ruth Crowe
 Charles Ellwood
 Alice Bryant
 Clarence Dabler
 Pauline Burgess

Cameron.
 Cameron.
 Oshorn, Mo.
 Cameron.
 Cameron.



The MYSTIC



First Year



FIRST ROW: Left to right:

Kathryn Hatfield
 Glenn Flanders
 Carolyn Howard
 Earle Johnson

Cameron.
 Cameron.
 Cameron.
 Perrin, Mo.

SECOND ROW:

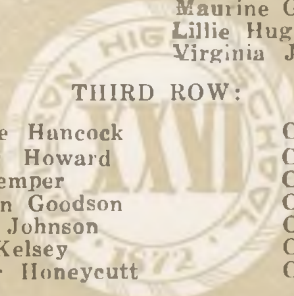
Olin Johnson
 Virginia Gregory
 Nell H nderks
 Lydia Flanders
 Maurine Garnant
 Lillie Hughes
 Virginia Jackson

Cameron.
 Cameron.
 Cameron.
 Cameron.
 Cameron.
 Cameron.
 Cameron.

THIRD ROW:

Freddie Hancock
 Walter Howard
 Ira Kemper
 Norman Goodson
 Glenn Johnson
 Ross Kelsey
 Bruner Honeycutt

Cameron.
 Cameron.
 Cameron.
 Cameron.
 Cameron.
 Cameron.
 Cameron.





FIRST ROW: Left to right.

Vernon Price
Helen Shackelford
Alice VanGundy
Doris West
Donald Price

SECOND ROW:

Cameron. Benjamin Porter
Cameron. Woodrow Rider
Cameron. Mildred McCullough
Cameron. Leslie Powers
Cameron. Mratha Marcum
Victor Williams
Marian McClean

Cameron.
Cameron.
Cameron.
Cameron.
Cameron.
Cameron.
Cameron.

THIRD ROW:

Jess Morehouse
Homer Wylie
Ada Rice
Eloise Wiley
Harold Leach
Inez Myers
Alvin Packham
Marine Miller

Cameron.
Cameron.
Cameron.
Cameron.
Cameron.
Cameron.
Cameron.

JUNIOR HIGH ACTIVITIES





COACH S. T. UTZ

St. Joseph, Mo.

Although Coach Utz did not have much time to spend with these boys, he showed an interest in them, and realized that their talents would develop into the future Cameron High teams.

PAUL McDANIELS

Capt. Forward

Cameron, Mo.

Paul was selected on the Trenton all-tournament team. "Mac" is doomed to give some real competition on the senior high aggregation next year.

HADLEY KIMES

Center

Cameron, Mo.

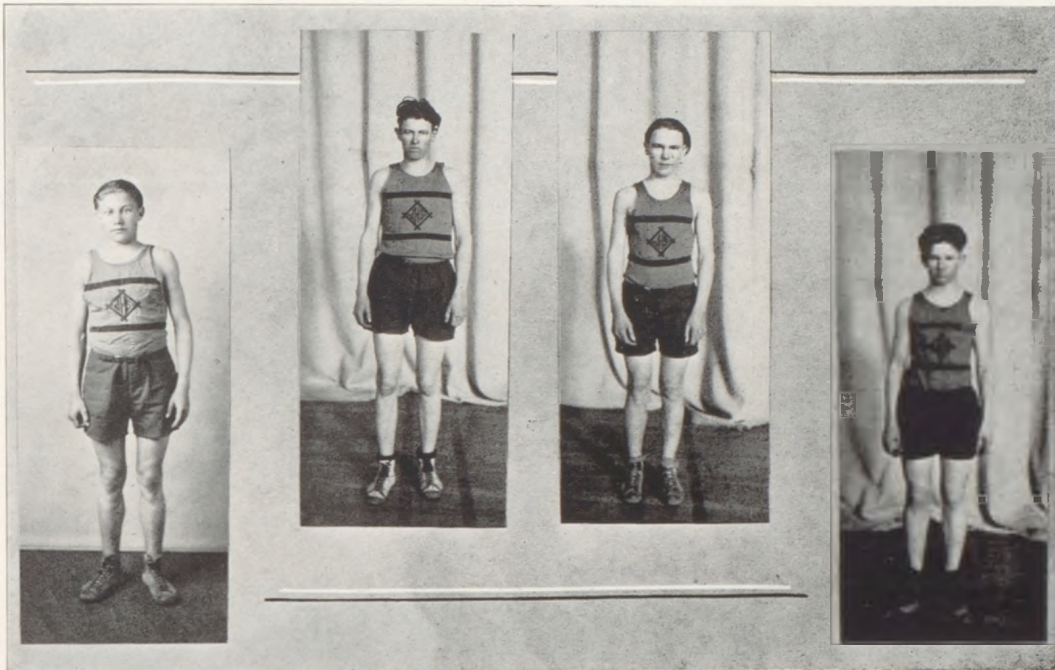
"Had" is also an all-tournament man and is considered as one of the most promising prospects. Had has a lot to live up to if he develops his ability in accordance with perspective possibilities.

DONALD EAVES

Forward

Cameron, Mo.

"Don" was a good shot, clever with the ball, and a most dependable player.



ALVIN PACKHAM Guard Cameron, Mo.

Alvin was handicapped in size, but despite this fact he was capable of holding down his position at guard.

ARNOLD BROWER Forward Cameron, Mo.

Arnold was a deadly shot, and a dangerous man to guard, due to his shiftness on the floor and his ability to evade his opponent.

FRANK HOWARD Guard Cameron, Mo.

Frank as well as being a good guard, was well known for his ability as a basket shooter, and has a promising future.

CLYDE GARVIN Guard Cameron, Mo.

Clyde was a steady, consistent player, and could always be depended upon to deliver the goods.



Basketball Squad

This is the first year that the underclassmen have had a team which played any scheduled games. Notwithstanding this fact, the team developed by Coach Utz was victorious in most of its several starts.

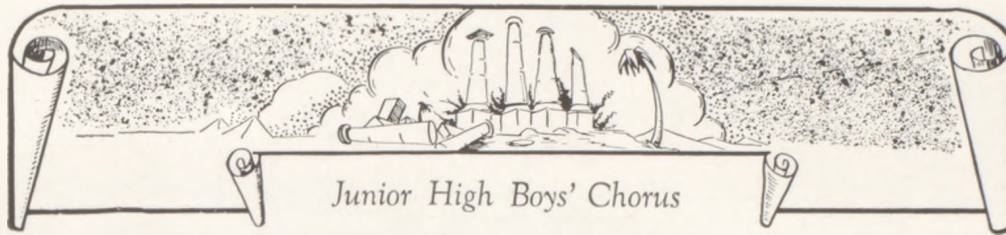
In the Trenton Junior High tournament, the Junior Dragons emerged victorious, bringing home the championship cup, after playing a number of very hard and strenuous games, which resulted in the placing of Capt. McDaniels and Hadley Kimes on the All-Tournament Team.

With this successful season completed we feel that the Cameron Junior Dragons are well on the way to many other such successful seasons.



FIRST ROW : Paekham, F. Howard, Capt. McDaniels, Eaves, Garvin, Kimes.

SECOND ROW : Kemper, VanWinkle, Folsom, H. Howard, Bender, Parks, Streu, Ballinger, Coach Utz.



Junior High Boys' Chorus

Of all the musical organizations, none heard has proved more popular or pleasing than the Junior High boys' third year chorus. With a combination of voices well trained and well modulated, the effect of their singing was very impressive. An exceptional ability of voice blending marked their performances, and they were sure to be brought back for an encore.



FIRST ROW: Leland Warner, Chas. Caldwell, LaVerne Williams, Maxwell Buck, Wesley Ballinger.

SECOND ROW: Eugene Trice, Lowell Folsom, Dale Constance, Miss Sims, Alymer Sheehy, John Groebe, Wilfred Crawford.



FIRST ROW: Faye Stinson, Florence Connor, Anna Carroll, Hyla Dice, Louise DeShon, Mildred Brown, Esther Shaw, Dorothy Smart, Virginia Porter, Evelyn King, Muriel Davis, Catherine Cline, Louise Gilliland, Mabel Gregory, Mildred Smith, Miss Sims.

SECOND ROW: Dorothy Currell, Burlah Bird, Lena Smith, Goldie Sloan, Dessie Lee Sweat, Mary Ellen Pyle, Doris Waugh, Helen Nelson, Elizabeth Whitaker, Blanche Crow.

THIRD ROW: Louise Berten, Alma Gibson, Corrinne Smith, Helen Chivens, Guenavere Knoch, Deborah Baldwin, Dorothy Stade, Martha Holzapple, Reve Fite, Helen Constance.

FOURTH ROW: Anabel Swearingen, Louise Hurd, Mary Whitaker, May Morton, Dorothy Crawford, Amelia Theilmann, Frances Roberts, Grace Wiley.



The Junior High Girls' Chorus, though large in number, flexibly followed the director's commands and produced music that was well sung and well received.



FEATURES



The MYSTIC



THE MYSTIC CARNIVAL

The MYSTIC



Ukele Ladies

In Private Life

Turney's Frida

Pete, Repeat & Pete

All 'cept Us

The Hitchrack Trio

Athletes (?)

Contentment

The Thrill That Comes





Apron Day

Harold Sloan: Mamma, I got 100 today under one teacher.
Mrs. Sloan: That's fine, you are improving.
Harold: I don't know, you see I got 50 in grammar and 50 in algebra.

Freshman: Preacher, are you Art Editor of The Mystic?
Preacher: Who, me? Why I can't hardly draw a breath.

Johnny Syde: (Taking notes in Mr. Shipley's class): Prof, what was the first thing you said?
Prof. Shipley: Perhaps, Goo!

Mr. Elliot (in Religious Training School): Dink, will you look up that reference in Ephesians—I have only the New Testament.

Punk (in Chemistry exam): If you pass an iron magnet over iron filings, they will rise.

Tud Kimes (the Junior Orator): We have but one more year to endure the privileges of C. H. S.

Mr. Elliot: What was the Sherman act?
Harold Constance: Marching thru Georgia.

A CORRECTION

On page sixty-eight the cut of the Mystic Staff should have shown the picture of Orene Sydebotham, but thru a mistake of the engravers her picture was omitted.



Hobo Day

DEFINITIONS DESIGNED FOR FRESHMEN

Faculty—A body of teachers who hold official kangaroo court once a week and draw their salaries once a month.

Demerits—A method the faculty has for getting even; a preventative of class rushes, kangaroo court, etc.

Gridiron—An iron kept hot by profanity.

Diamond—A four-cornered track for use by those who make a hit.

Football—A bull fight in which there are 22 contestants.

Tennis—A game in which "rackets" assist in a "love" game.

Clarence Van Gundy's Philosophy

I live for the girls who love me,
For the ladies that know me true (?)
For the eyes that shine upon me,
And the maidens I can woo.

Miss Matlick (in Shakespeare Class): Ernest, give me a quotation from Shakespeare; don't hesitate, either.

Preacher (Suddenly aroused): Well--I--Yes--Oh, hell what have we here?

SENIOR ENGLISH

Silently, one by one,
In the infinite class books of the teachers
Blossomed the little zeros,
The forget-me-nots of the Seniors.

Miss Matlick: John, conjugate a weak verb.

John Waugh: Ill, Iller, Illest.

The MYSTIC



In 1776



Tud, the Terrible



Charlie Himself



The 1000 mile Club



Kathleen Hogan at 6



Roll 'em girls, roll 'em



Kicked Out



In the Good Old Days



Poor Pony!

The MYSTIC





Cinder Pushers



Goin' Thru

Brigham

Inside Out

The Daily Workout for Butch & Jim

Dragon Basketeers

Sun Bathing

See What Phy. Ed. Did For Them

The Triumvirate

Physical-Eiders

Physical Culture

"And Home Came Ted"

Presented by

The Seniors of 1926

THE CAST

Skeet Kelly, the Clerk	-----	Ben Ausman
Diana Garwood, the Heiress	-----	Louise Osborn
Miss Loganberry, the Spinster	-----	Edith Hatfield
Ira Stone, the Villian	-----	Orion Packard
Aunt Jubilee, the Cook	-----	Hazel Porter
Mr. Man, the Mystery	-----	Ernest Thompson
Jim Ryker, the Lawyer	-----	Donald Gall
Mollie Maeklin, the Housekeeper	--	Betty Jo Williams
Henrietta Darby, the Widow	-----	Sarah Kenny
Ted, the Groom	-----	Beatty Silvius
Elsie, the Bride	-----	Lorraine Shirts
Senator M'Corkle, the Father	----	Victor Dusenberry

Who's Who In C. H. S.

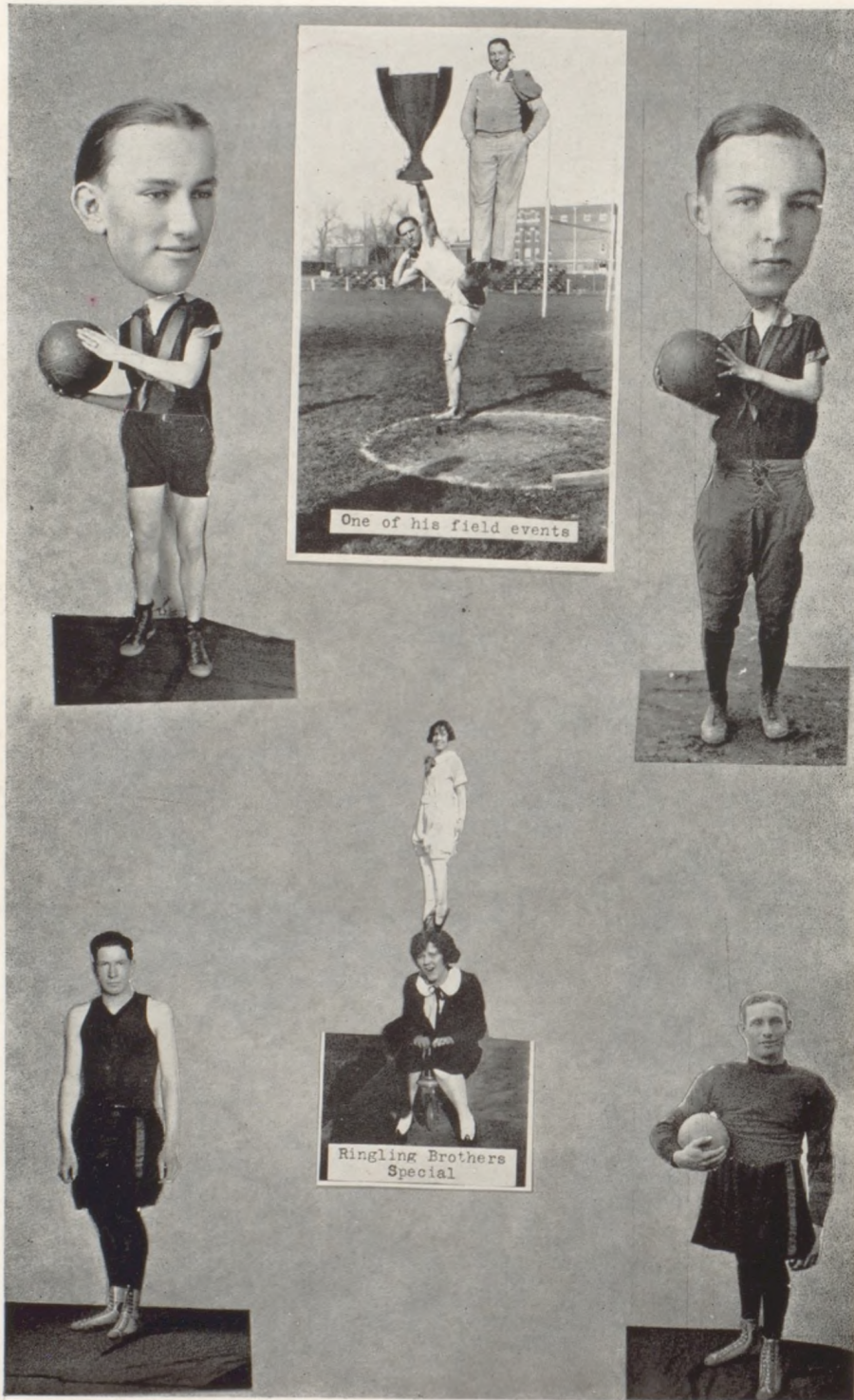
FIRST CHOICE

Louise Osborn
 Ben Ausman
 Herbert Muders
 Marjorie Dyche
 Edith Hatfield
 Orene Sydebotham
 Ernest Thompson
 John Spragg
 Merl Williams and
 Lois Bryan
 Lavon Althouse
 Harold Constance
 Betty Jo Williams
 Orene Sydebotham
 Clara Burkett
 Herbert Muders
 Louise Osborn
 Ira Kimes
 Marjorie Dyche
 Holwith Partin
 Lois Bryan

Queen of Hearts
 King of Diamonds
 Ace of Athletes
 Aphrodite
 Dumb Dora
 Joker
 Asphalt Arab
 Snap Dragon
 Ideal Couple
 Bashful Bozo
 Pessimist
 Optimist
 Hot Ether Dispenser
 Last Rose of Summer
 Senior King
 Senior Queen
 Junior King
 Junior Queen
 Sophomore King
 Sophomore Queen

SECOND CHOICE

Betty Jo Williams
 Ernest Thompson
 Orville Offutt
 Louise Osborn
 Donald Gall
 John Banning
 Beatty Silvius
 Lionel Chapman
 Herbert Muders and
 Mary Byers
 George Bothwell
 Ivan Zancker
 Ruth Quigley
 John Banning
 Edith Hatfield
 Roy Todd
 Maurine Sloan
 Roswell Farris
 Ruth Quigley
 Edgar Bryant
 Martha Buckley



One of his field events

Ringling Brothers Special

FREAKS



The Burger Engraving Co.

Kansas City

The inspiration of the Master Artists of the ages is caught and reflected in delightful styles on the pages of Burger Engraved Year Books ~ ~ ~ ~ ~

The ability sincerity and genuine service of the ~ ~ ~ Burger Organization make pleasant the work of building the Annual

The business men who
advertise in this book
are worthy of your patronage,
for only with their support
can the publication of this book
be made possible.



It isn't for us to tell you young men in high school how important it is to make the most of good appearance. You know that as well as we do. You know exactly what are the right clothes to make the right impression. All we want to tell you is that we have them. They're made by Society Brand and there are none finer to be had anywhere. We have a lot of them, designed especially for young men. It will be worth your while to come in and look them over.

C. N. STUCKER & CO.

Plain Price Merc. Co.

Phone 58.

General Merchandise

Phoenix Silk Hose

For Long Mileage

*An Honest Desire to Serve Is
Our Definition of Courtesy*

It is our aim to serve you pleasingly
as well as promptly.

THE CAMERON TRUST CO., Cameron, Mo.

**We Guarantee Results
With the Glasses We Fit.**



G. W. Sherman
Optometrist

Eyes Examined
Glasses Fitted

If you make your purchase at
LOHMAN'S
you will save money.

LOHMAN'S VARIETY STORE

Missouri Wesleyan College

The Place of EDUCATION, SOCIETY and RELIGION

Students of Cameron High like Missouri Wesleyan.

Seniors will find in Missouri Wesleyan, your own college, the opportunities you are now prepared to accept.

Courses leading to the A. B. degree in Philosophy, in Science and in Language.

Missouri Wesleyan is prepared to offer you the best.

A. H. GEHA

DEPARTMENT STORE

"Where Your Dollar Does Its Duty"

We Handle the Famous Line of

RED CROSS SHOES

For Ladies

Cameron :: :: Missouri

LEIBRANDT JEWELRY STORE

GIVE GIFTS THAT LAST

THEY COME

FROM

LEIBRANDT'S

Everything to Eat and Drink

at

NEFF'S

BAKERY AND FOUNTAIN

Cameron :: Missouri

Miss Mary Munson

MILLINERY

—AND—

Art Goods

103 West Third Street

W. H. KIMES

HARDWARE AND FURNITURE

Home of

Devoe Paints and Varnishes

Phone 87

Our Pleasure is
TO SERVE YOU

Edelen

Pharmacy

(Service Plus Quality)

Wise Brothers

CASH GROCERY

Quality and Service

Phone 281

|||
**MAXWELL &
MAXWELL**

CHIROPRACTORS

Office Phone 445

Residence Phone 820

Cameron — Missouri

Ide Shirts

Ide Collars

Mallory Hats

Stetson Hats

Regal Caps

Cooper's Underwear

Holeproof Hosiery

Bradley Sweaters

For Men and Women

For Men and Women

KUPPENHEIMER CLOTHES

Dillener Clothing Co.

Cameron, Missouri.

Place Bros.

The Home of

"TOWN CRIER" FLOUR

Frank L. Pulley

Attorney-at-Law

Practical in State and Federal Courts

Cameron, Missouri

Ocean to Ocean Cafe

Best Place in Town to Eat.

Special Dinner and Supper

35 Cents.

Short Orders at All Times.

Famous for Our

Chili and Sandwiches.

Page One Hundred Nine



*In another year, how different
that boy or girl of yours will
look---but photographs of the
children never grow up.*

Don't fail to have them made at the

A. S. Brown Studio

105 East Third Street, Cameron, Missouri.

After High School--- What?

Where will you be and what will you be upon the tenth, twentieth or thirtieth anniversary of your high school commencement? Will achievement, happiness, and the satisfying feeling of worth-while accomplishment be yours? Or will you be looking back with regret? The world was never in greater need of qualified leaders. The problem is now up to you. Your decision to attend college will double your chances for success. It will place you in line for leadership tomorrow.

ATTEND YOUR COLLEGE

This institution was established by the State of Missouri to train leaders who will guide the destiny of the state in coming years. It is maintained so the people of Northwest Missouri may have the best educational opportunities at the lowest cost. New buildings, new equipment and a splendid faculty are ready to serve you. Living costs are low—student life is pleasant.

An inquiry by card or letter will bring to you detailed information of this institution. Our catalogue is yours for the asking.

NORTHWEST MISSOURI STATE TEACHERS COLLEGE

UEL W. LAMKIN, Pres.
Maryville, Mo.

THE News - Observer

Established in 1906.

Published in the interest of Cameron.

Specially equipped for fine
job printing.

FLOWERS

Yes, We Have Them for All Occasions.
Home Grown, Cut Every Day.
Students Welcome at the Greenhouse.

RUSSELL E. CATER

The Florist.

PHONE 33

You Can't Hurdle St All At Once

Some men may go over the top at the first jump. Mighty few, however. Most of us have to put in a lot of training. We have to work a little, save a little, invest a little—and then one day we take a broad flying jump right into Prosperity Row.

Why not begin training today by opening up an account with

THE FARMERS BANK of Cameron.

The Oldest Bank in Town.
Established In 1878.

DRY GOODS

HOSE AND NOTIONS
The Best of Merchandise
At Reasonable Prices.
It Pays to Trade at

The Leader

McAdoo Battery Service

Willard Storage Batteries
A Complete Battery Service
213 East Third St.
Phone 320.

Send it to

BYERS—THE CLEANER

“Where It’s Done Right”

Phone 23. Old Postoffice Bldg.

Cameron, Mo.

DR. LIZZIE CLAY

OSTEOPATH

102 South Cherry Street

Cameron :: Missouri

Patronize Home Industry

“**EAT TAYLOR’S BREAD**”

None Better

Only One Bread—That’s

TAYLOR’S

TELEPHONE 193

UNDERTAKING

Wall Paper

and

Floor Coverings

Have That Diploma Framed

at

Fry & Todd

EXCLUSIVE STYLES IN LADIES'

READY-TO-WEAR

—at—

Cameron Style Shop

W. H. S. McGLUMPHY

ABSTRACTS OF TITLE

Insurance — Notary

ROOM 22

Trust Company Bldg.

H. M. HUMPHREY, M. D.

**HOMEOPATHIC PHYSICIAN
AND SURGEON**

Special Attention Given
to the medical treatment of

GOITERS

Office in Cameron Trust Bldg.

The Best is Cheapest

We Sell the **BEST ICE**

It is made artificially from

Pure Distilled Water

Remember the Phone Number—77

THOS. FIDDICK

Page One Hundred Thirteen

LET US REBUILD YOUR SHOES

First Class Workmanship
Modern Equipment

Shine Parlor for
Ladies and Gents

Electric Shoe Shop

R. L. Macrae, Prop.

Cameron, Mo.

Owen and Murray

THE REXALL STORE

Drugs

Books

Kodaks

Wall Paper

Shades

and Paints

New Soda Fountain

Your Inspection Requested

119 E. Third St.

J. W. POLAND

FURNITURE

RUGS

AND

LINOLEUM

Y. M. C. A. Bldg.

ANDERSON

BEAUTY SHOPPE

Trust Company Building

Hair Dressing, Scalp and Facial
Treatments, Manicuring

Marcel Waving a Specialty

ZIMMERMAN DAIRY CO.

Latest Equipment

Sanitary Throughout

GRADE "A" MILK

PHONE 287

Chase & Sanborn's
TEA and COFFEE

Queen of the Pantry
FLOUR

Lee
CANNED GOODS

WILLIAMS GROCERY COMPANY

Purveyors of Fine Foods

M. R. WILLIAMS, Prop.

Phone 520

For Protection That Protects

W. P. MOORE

“The Equitable Life Man”

Cameron, Mo.

Phone 572

AUTO DRIVE INN

STORAGE

GAS

OIL

Cars Washed

Taxi and Transfer

Phone 662 - 3rd & Main

CHAS. WOOD, Prop.

J. B. RUSSELL

BUILDING

MATERIAL

LAIN DRUG CO.

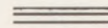
stands for

QUALITY — PRICE — SERVICE

Either in Our Store

or at your

Door



We Are Always Glad to

Serve You.

Call 89 — Any Time

S. H. HOOK & CO.

Drugs, Books, Wall Paper,

Window Shades,

Paints and Varnishes

School Supplies

and Sporting Goods.

Vietrolas and Records



CORNER DRUG STORE

MOBERLY'S JERSEY DAIRY

Where they produce clean, wholesome
rich milk.

OPEN FOR INSPECTION

A. J. MOBERLY - Phone 1421

Clark's Barber Shops

Two Shops — 211 and 204
East Third

EXPERT WORKMEN
PROMPT SERVICE

Your Patronage Appreciated

D. L. CLARK, Prop.

Hibbs Dry Goods Co.

QUALITY :: VALUE :: VARIETY

CAMERON'S BEST STORE

When You Are in Need
of

LUMBER

LIME

CEMENT

COAL

Or Any Kind of Building Material

Call 195

The Cousins Lumber Co.

CAMERON . . . MISSOURI



The School that places Students *"No Position, No Pay"*

CHILLICOTHE BUSINESS COLLEGE
CHILLICOTHE, MO.



HIGH SCHOOL



OUR FIVE BIG BUILDINGS

Frank B. Klepper

ATTORNEY AT LAW

Office in Farmers' Bank
Building

Denny's Barber Shop

First Class Barber Work

Hot or Cold Bath

Your Patronage Appreciated

W. H. DENNY, Prop.

First Door South of Hook's

HARDWARE & IMPLEMENTS

PHONE 63

O. E. CONNELL

The Winchester Store

The Cameron Sun

FOR JOB PRINTING

FOR ADVERTISING

FOR NEWS

R. S. SHIPP

VETERINARIAN

Cameron, Missouri

DR. O. A. SMITH

DENTIST

Cameron, Missouri

ROBT. E. COLEBERD

ATTORNEY AT LAW

Trust Company Bldg.

Cameron, Missouri

Patronize MYSTIC Advertisers

CAMERON X. L. ICE CREAM

A Chapman Product

We are proud to introduce some thing new and different. No extract used in X. L. The pure vanilla bean is pulverized and used directly into the ice cream.

The flavor is Marvelous—Distinctive—Matchless.

You know it's there; you can "see" the tiny particles of vanilla all through the cream.

Nothing else like it; once you taste this cream, no other kind will satisfy.

"You Can 'See' the Flavor"

Cameron Dairy Co.

Cameron - - - Missouri

L. A. WILSON, M. D.

PHYSICIAN AND SURGEON

Cameron, Missouri

Howser Bldg. :: Phone 737

KOLLEGE KLEANERS

PHONE 149

We Klean Klothes Klean

3rd & Chestnut

Cameron Co-operative

Elevator Association

CASH DEALERS IN

THE CELEBRATED PURINA

FEEDS

COAL, FLOUR, OIL, SEWER PIPE AND ALL

FARM PRODUCTS

TWO STORES

Phone 675

Annex 311

Cameron Junction
Lunch Room

We Excel in
Good Things to Eat

Give Us a Trial

W. E. QUIGLEY
Proprietor

Walter W. Hammer

Ford
THE UNIVERSAL CAR

Authorized Sales and Service
FORD - FORDSON - LINCOLN
Cameron, Missouri

Bring Your Poultry, Eggs and Cream
to

FARMERS PRODUCE COMPANY
North Walnut Street
Highest Market Prices
T. M. O'NEAL, Prop.

C. Everett Ford

For
HARDWARE, CUTLERY,
Etc.

Our Aim is Good Goods
At Low Prices

Cameron -:- Missouri

Brown & Crawford

WALK-OVER SHOES
INTERWOVEN SOCKS FOR MEN
ARCH-PRESERVER SHOES
GOODKNIT HOSIERY FOR LADIES
"Economy Through Quality"

Page One Hundred Nineteen

CONGRATULATIONS

& & &

To you who graduate we offer our congratulations and well wishes for your future success;

and

To Your Friends, who are seeking a gift both lasting and distinctive with which to express their sentiments, we offer the best in Watches, Diamonds, Rings, Jewelry, Silverware, Ivory and Leather Goods, Pianos and Edisons.

F. H. AMES

The Leading Jeweler

Cameron :: :: Missouri

Protect Your Savings

Under Federal Government Laws.

Start an Account with

The First National Bank

(Member Federal Reserve System)

TOYS — NOTIONS

QUEENSWARE

Telephone 57

RUSSELL VARIETY STORE

Blue Bird Beauty Shop

Flutter in.

Shop Phone 242

Residence 163



The Friendship of the Student Body
Is One of Our Most
Valuable Assets.

We trust we shall retain it.

The Cameron Progress

TOM W. KLEPPER.



THE NEW

CORONA FOUR

Standard Keyboard

The first portable typewriter with
standard office typewriter features
throughout.

Ask your local dealer for a
demonstration
or a trial.

Thomas Auto Supply

GOODYEAR TIRES
and
VULCANIZING
Telephone 114

FOR GROCERIES AND NOTIONS

Go to the

FARMERS CASH STORE

North Chestnut St.

S. E. SMITH, Proprietor.

Phone 129

Cameron, Mo.

When It Rains, You Telephone More.

When a sudden shower sends pedestrians scurrying to shelter, things begin to happen in the Telephone Office.

Line lamps begin to blaze on the Switchboard, nimble hands swiftly put up and take down connections. Urgent calls brook no delay, prompt service admits no needless gesture.

This is just one of the many unusual things that happen in the Telephone Office.

If you have never been through a modern, up-to-date Telephone plant, it will be interesting to visit our exchange. You will learn something.

THE CAMERON TELEPHONE COMPANY

Page One Hundred Twenty-one

The MYSTIC

THE BEST RADIO

THE

DIXIE

"The Nightingale of the Air"

Manufactured by the
DIXIE MANUFACTURING COMPANY
Cameron, Missouri

MADE IN YOUR OWN HOME TOWN

BOOST THE DIXIE

QUALITY RADIO AND ELECTRICAL MERCHANDISE

JACK RIGGS, Cameron, Missouri.

AUTHORIZED DEALER "DIXIE RADIO"

WILLYS-OVERLAND

Fine Motor Cars

FISK TIRES, TUBES AND ACCESSORIES

U. S. L. BATTERY SERVICE STATION

SERVICE THAT SATISFIES

EXPERT MECHANICS — 24-HOUR SERVICE

MOORE MOTOR CO.

PHONE 495

::

CAMERON, MO.

Page One Hundred Twenty-two

1926

J. E. Nichols

FEED AND FUEL AND ALL KINDS OF HIGH GRADE COAL

Poultry Feed, including Rolled Oats, Steel-Cut Oats, Chick Feed, Chops, Southard's Chick Feeds and Hen Scratch, Kaffir Corn, Blackford's Chick Mash and Calf Meal.

Sewer Pipe Hay Corn Oats

25—PHONE—25

R. E. Cater

FLOWERS

We have them for all occasions.
Home grown, cut every day.
Students Welcome.

RUSSELL E. CATER

The Florist

Phone 33

L. L. CLEVELAND

for

CLEAN, WHOLESOME

GRADE A MILK

from

TESTED COWS

Phone 1756

Cameron - Missouri

Dr. L. F. Graham

DENTIST

Office Over Hook's Drug Store

Cameron

- : -

Missouri

DRAMA AS SOME SEE IT

Shipley — comedy

Bender — tragedy

Warner — romance.

100% Government Inspected

Ladies' Rest Room

HIGHWAY CAFE

Cameron, Missouri

RESERVE THE "BLUE ROOM" FOR YOUR PARTIES
SPECIAL CHICKEN DINNER ON SUNDAY

Phone 434

Geo. M. Zaneker, Prop.

Steaks a Specialty

CAMERON RADIO CO.

Radio Repair Work
Day-Fan and Crosley
Radio Sets

WILFRED JAMES
Prop.

PHONE 115 Res. 6

WALTER E TRICE

Attorney and Counselor

204-205 Farmers Bank
Building

Cameron, Missouri

Luce's Studio

PHOTOGRAPHS

Kodak Finishing

Enlargements

and

Picture Framing

PHONE 171

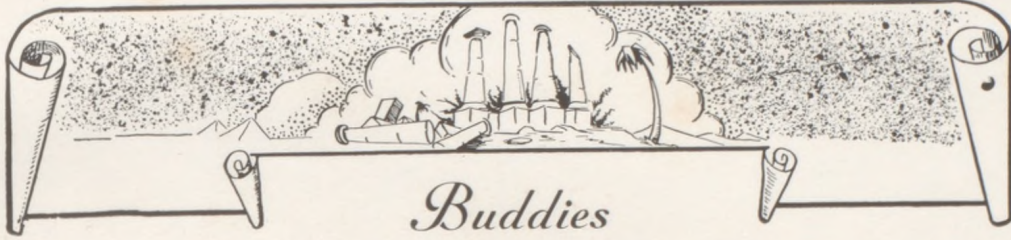
BANK BARBER SHOP

Where the Barber
Trade Goes

"You'll Like the Service"

EXPERT LADIES' AND GENTS'
WORK

T. L. LIZAR, Prop.



Buddies

Frances Roberts. Lois + John Jackson
 Gusta Price
 James Williamson
 Harriette Alice Rock - me too
 "Dick" E. Duckworth - through Mo

Grand son Wiley (Bobby) Esther Shaw
 Carl Daniels Samuel Moore
 906

W. M. ...
 ...

...
 ...
 ...

...
 ...

The Breckenridge Blank Co.

Book Printers

Breckenridge - - Missouri

Finis





