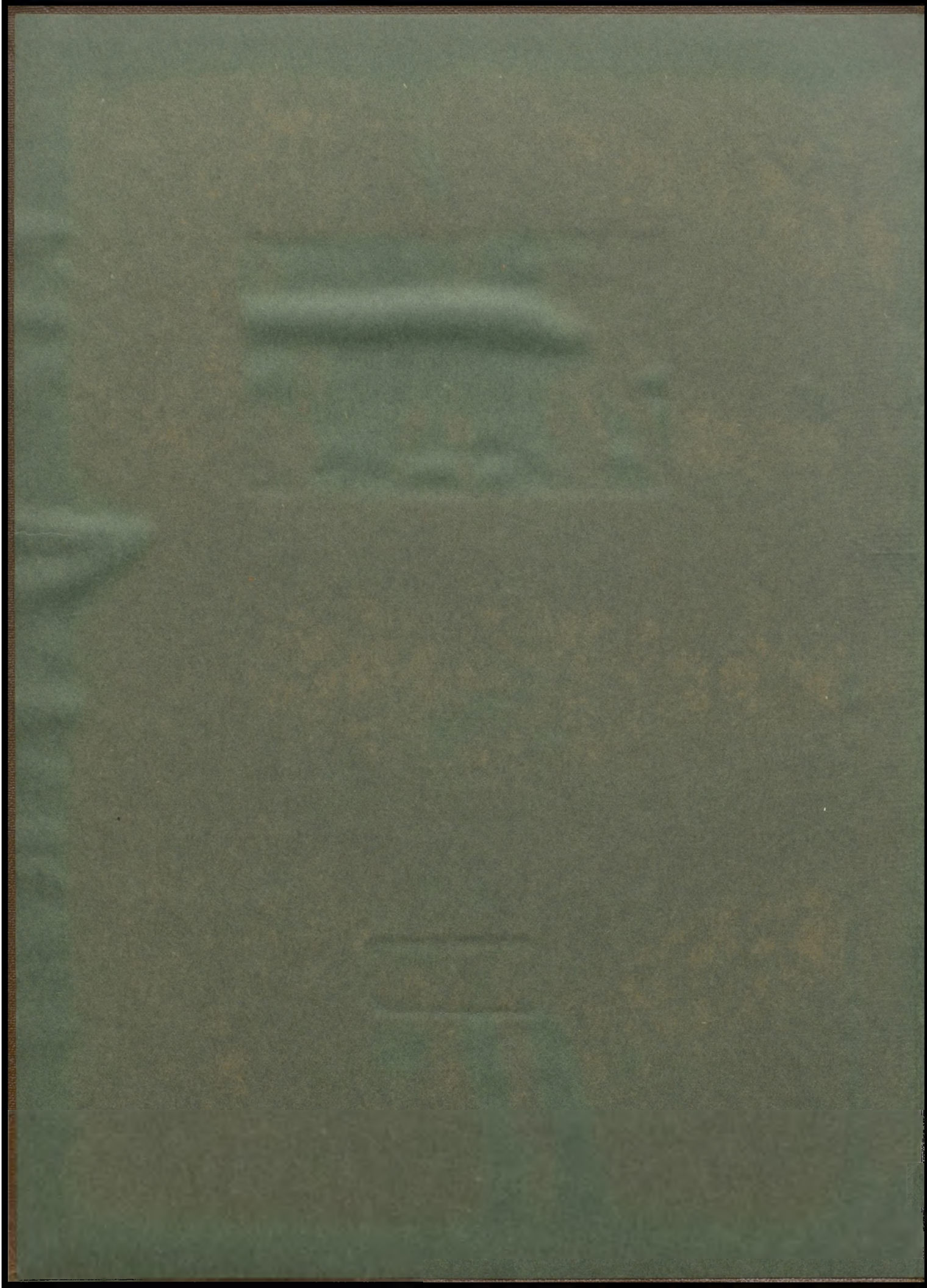
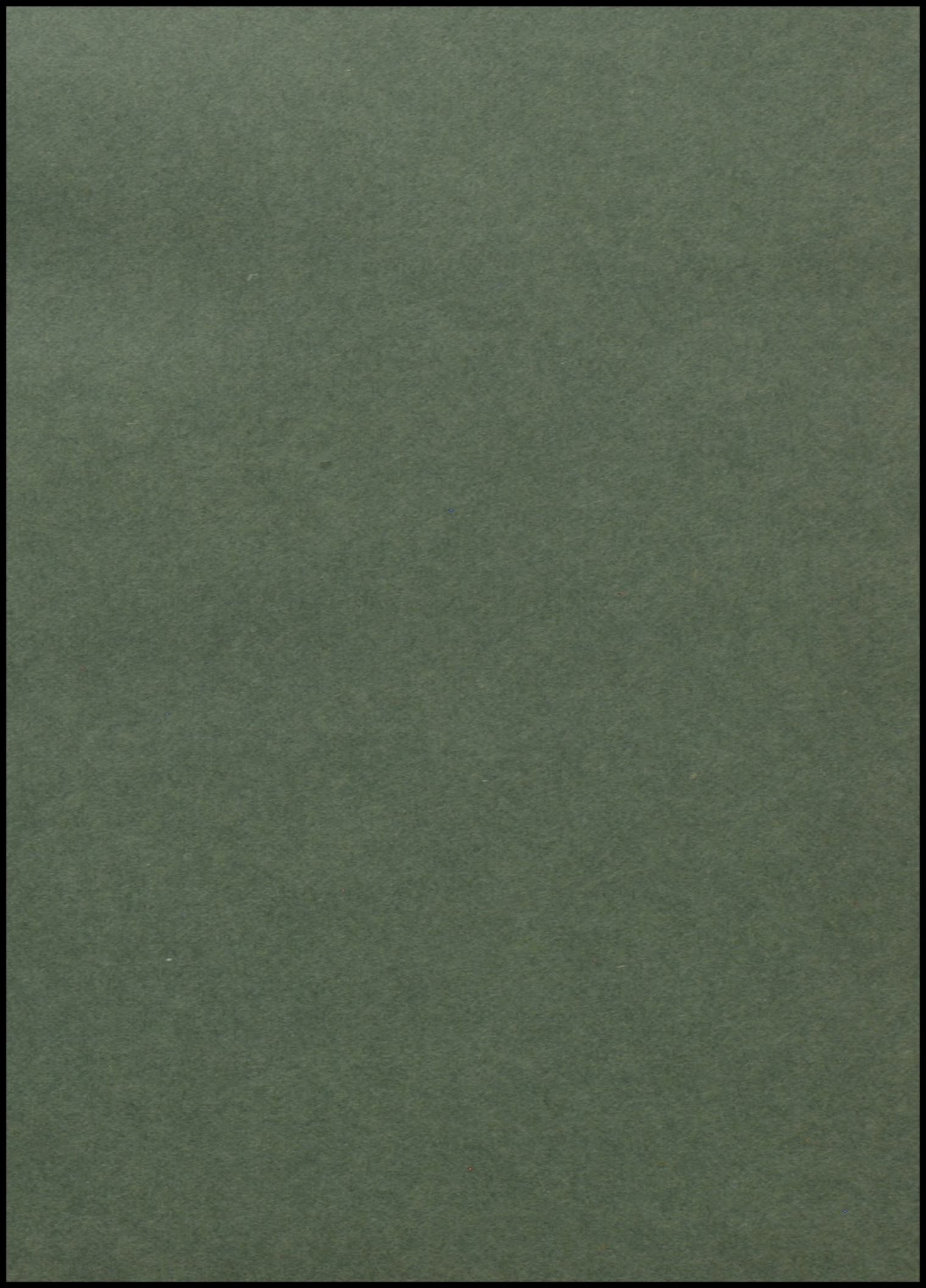
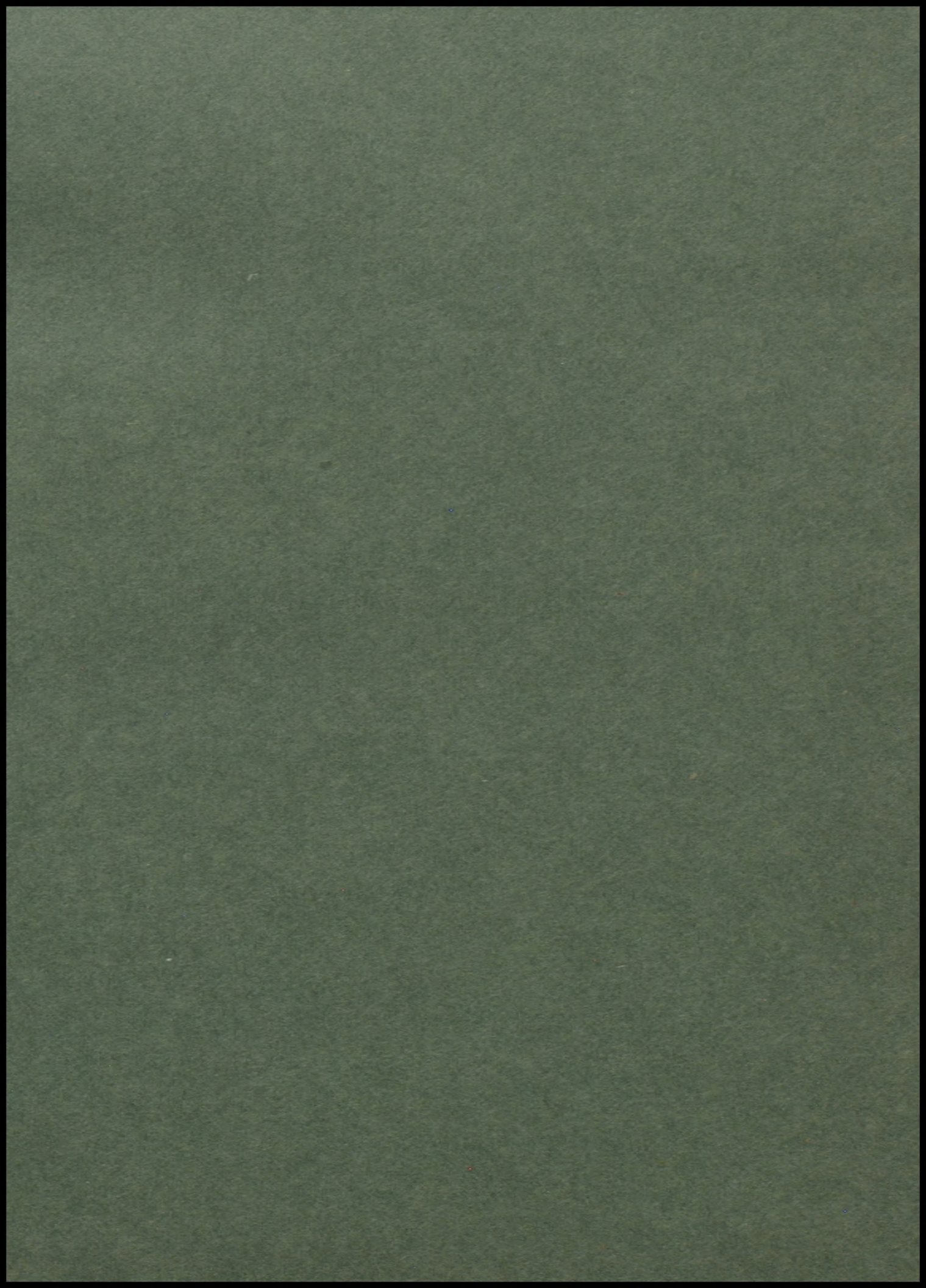


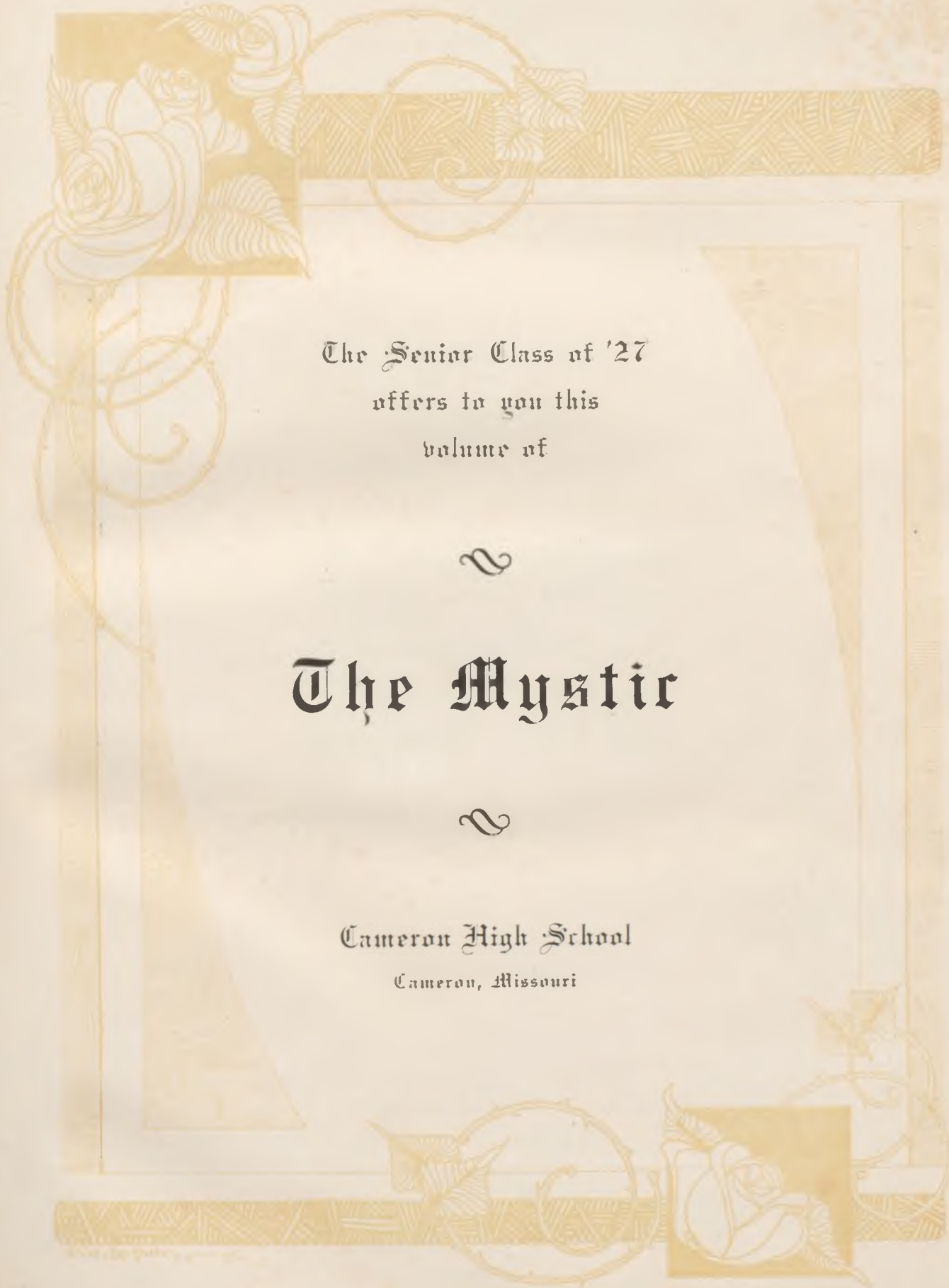
The
MYSTIC

1927









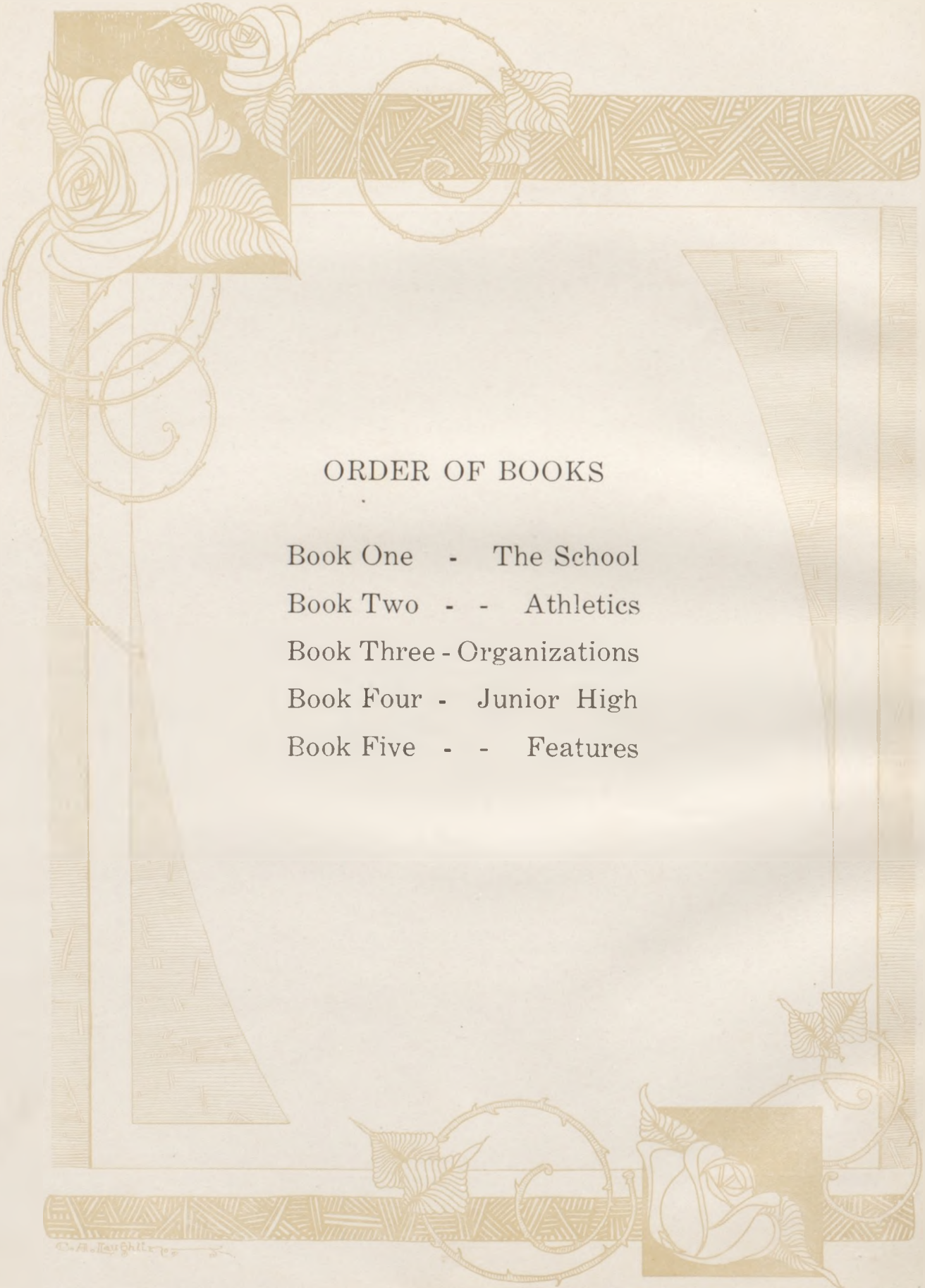
The Senior Class of '27
offers to you this
volume of



The Mystic



Cameron High School
Cameron, Missouri



ORDER OF BOOKS

- Book One - The School
- Book Two - - Athletics
- Book Three - Organizations
- Book Four - Junior High
- Book Five - - Features



FOREWORD

If in years to come this volume brings to your memory cherished reminiscences of pleasant associations and of life-long friendships so that the voice of the school and the class may not be lost throughout the years to come, then indeed will our aim have been accomplished by this—The 1927 "Mystic."



DEDICATION

To have labored long and earnestly in a trying position, to have not only succeeded, but that notably well, to have performed her manifold and arduous duties with a devotion marked for the well-being of C. H. S., and to have made a host of friends, has been the lot of our dedicatee.

The Staff of the 1927 Mystic affectionately dedicate this copy of the Annual to Mrs. Pearl E. Warner.



MRS. PEARL E. WARNER



The House by the Side of the Road

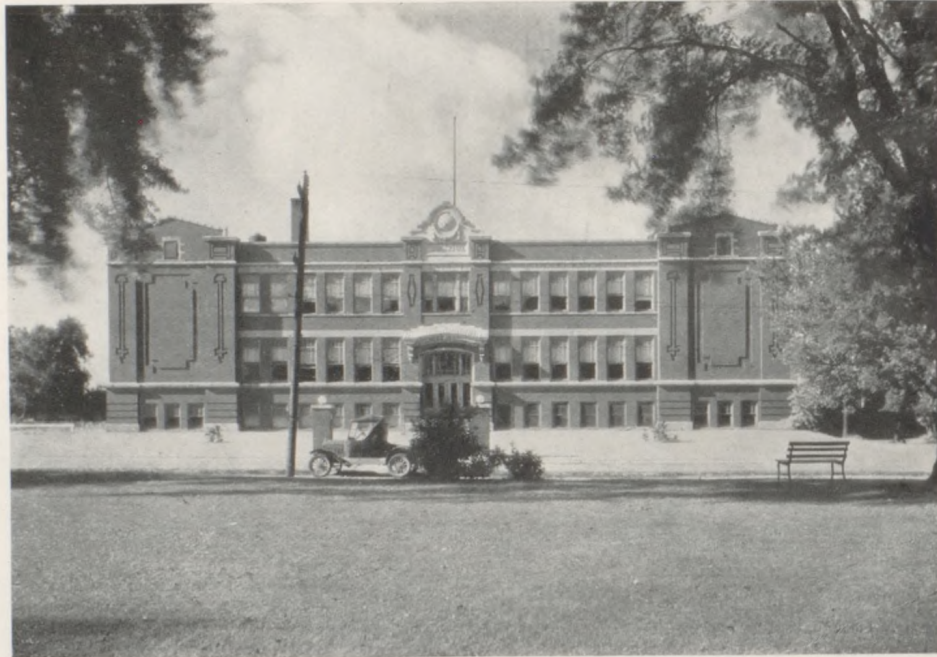
Let me live in a house by the side of the road
Where the race of men go by;
The men who are good and the men who are bad,
As good and as bad as I.

I would not sit in the scorner's seat,
Nor hurl the cynic's ban.
But let me live in the house by the side of the road
And be a friend to man.

The MYSTIC



“Build thee more stately mansions, O’ my soul,
As the swift seasons roll,
Leave thy low vaulted past
Let each new temple nobler than the last
Shut thee from Heaven with a dome more vast
‘Till thou at length art free,
Leaving thine outgrown shell by Life’s unresting sea.”



“So live, that when thy summons comes to join
The innumerable caravan that moves
To the pale realms of shade, where each shall take
His chamber in the silent halls of death,
Thou go not, like the quarry slave at night,
Scourged to his dungeon, but, sustained and soothed
By an unfaltering trust, approach thy grave
Like one who wraps the drapery of his couch
About him, and lies down to pleasant dreams.”

Faculty



The Struggle

“Say not, the struggle naught availeth,
The labor and the wounds are vain,
The enemy faints not, nor faileth,
And as things have been they remain.

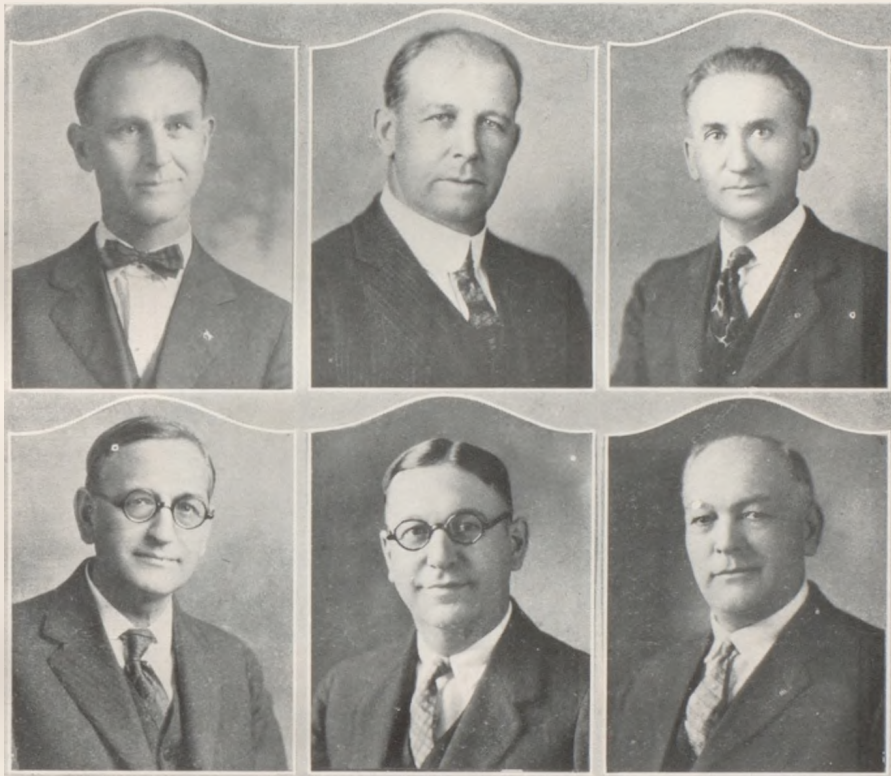
If hopes were dupes, fears may be liars;
It may be in yon smoke concealed,
Your comrades chase e'en now the fliers,
And, but for you, possess the field.

For while the tired waves, gaily breaking,
Seem here no painful inch to gain,
Far back, through creeks and inlets making,
Comes silent, flooding in, the main.

And not by eastern windows only,
When daylight comes, comes in the light,
In front, the sun climbs slow, how slowly,
But westward, look, the land is bright.

—Arthur H. Clough.

The MYSTIC



L. C. Allen, President

J. H. Hulsizer, Secretary

Clarence Staples

S. H. Hook

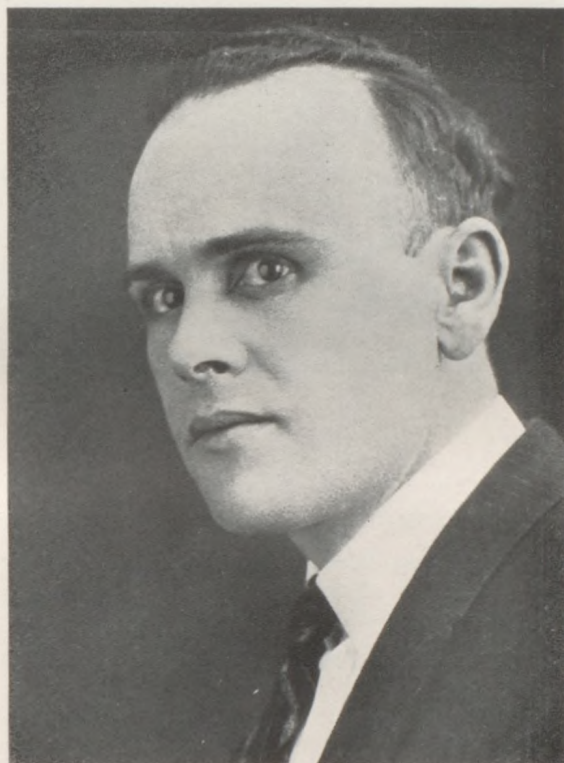
Raleigh Brown

W. H. Kimes



E. A. ELLIOTT, Superintendent

Central State Teachers College, Warrensburg, Mo.; A. B., University of Kansas; Graduate Student, University of Kansas; Teacher of rural schools, Johnson County, Mo., 1900-1912; Supt. Centerview, Mo., 1912-'13; Principal, Lee's Summit, Mo., 1913-'15; Supt., Waverly, Kansas, 1915-'18; Supt. Fredonia, Kansas, 1918-'25; Supt., Cameron, Mo., 1925-'27. Sociology, Economics.



PAUL W. OSBORN, Principal
Junior and Senior High Schools

B. S. in Education, Central Missouri State Teacher's College, Warrensburg, Mo., 1924; Supt. of Schools, Elm, Mo., 1916-18; Supt. of Schools, LaTour, Mo., 1921-23; Supt. of Schools, Wellington, Mo., 1924-25; Principal Cameron High Schools, 1926-27.

American Problems, American History, Advanced Algebra, Geography.



MRS. QUILLEY BLANKENSHIP

Cameron, Mo.

Life certificate, Northwest Missouri State Teachers College;
Graduate work University of Colorado;
Cameron High School, 1923-24-25-26-27.

Shorthand, Typewriting, Spelling, Bookkeeping, Sophomore Sponsor.

WILSON THOMAS

Cameron, Mo.

A. B. in Science, Missouri Wesleyan College, 1920;
Graduate work State University of Iowa, 1925-26.
Cameron High School 1921-22-23-24-25-26-27.

Chemistry, Physics, General Science, General Agriculture, Physical
Education, Faculty Advisor, The Mystic, Director of Orchestra.

MRS. PEARL WARNER

Cameron, Mo.

A. B. Missouri Wesleyan College, Student Northwest Missouri State
Teachers College Cameron High School, 1922-23-24-25-26-27.

Supervisor of Study Hall, Faculty Advisor, The Tank, Ninth Grade
Sponsor.



CLERC HARDINGER

Cameron, Mo.

A. B. and B. S., University of Missouri; University of Wisconsin;
Cameron High School, 1925-26-27.

Mathematics, Latin, Dean of Women, Ninth Grade Sponsor.

ALICE McMURRAY

Maryville, Mo.

B. S., in Education, Northwest Missouri State Teachers College, 1924;
Cameron High School, 1925-26-27.

Vocational Home Economics, Foods, Sophomore Sponsor.

MRS. GUY SEATON

Livonia, Mo.

B. S. in Science, Northeast Missouri State Teachers College;
Student, University of Missouri, University of Wisconsin, University of
California; Instructor, Unionville High School;
Cameron High School, 1924-25-26.

Vocational Home Economics, Clothing and Domestic Art, Senior
Sponsor.



MILDRED ENGLAND

Cameron, Mo.

A. B. in Language, Missouri Wesleyan College, 1925;
Instructor, Maysville High School, 1925.
Cameron High School, 1925-26-27.

American History, Modern History, English, Junior Sponsor.

A. H. DOOLEN

Manhattan, Kansas

B. S. in Agriculture, Kansas State Agriculture College, 1926;
Coaching School Kansas Aggies, 1925-26,
Cameron High School, 1927.

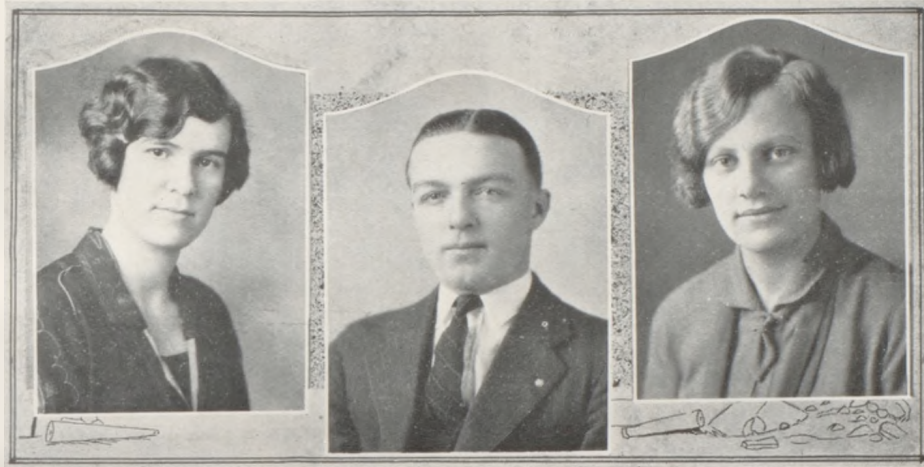
Vocational Agriculture, Boys Physical Education, Coach of Football,
Basketball and Track.

MRS. GERTRUDE DAVIS

Cameron, Mo.

Northwest Missouri State Teachers College; Cape Girardeau State
Teachers College; Missouri Wesleyan College; A. B. in Education,
Park College, 1923; Cameron High School, 1924-25-26-27.

Psychology, Methods, Teacher Training Reviews, Mathematics.



MARGARET CAMERON

Hannibal, Mo.

B. S. in Education, University of Missouri, 1921; Cameron High School, 1922-23-24-25; Little Rock, Arkansas, 1926; Cameron High School, 1927.

English, Junior Sponsor and Debate Coach.

CARL R. GROSS

Cameron, Mo.

B. S. in Agriculture, University of Missouri, 1920; Cameron High School, 1921-22-23-24-25-26-27.

Vocational Agriculture, Senior Sponsor.

ROBERTA COOK

Maryville, Mo.

B. S. in Education, Northwest Missouri State Teachers College; Cameron High School, 1927.

Physical Education, Girls Coach.



JOE M. WILLIAMS

Cameron, Mo.

A. B. in Language, Missouri Wesleyan College, 1926;
Diploma in Voice from Missouri Wesleyan College Conservatory of
Music; Cameron High School, 1927.

English, Public Speaking, Boys and Girls Choruses.

BELLE POLLARD

Columbia, Mo.

B. S. in Education, Kirksville State Teachers College, 1926;
Cameron High School, 1927.

Clothing, Domestic Art, Sponsor, Ninth Grade.

Senior





PAUL EGBERT Cameron, Mo.
 Staff. Pres. Senior Class.
 Basketball Squad. Hi-Y, Tank
 This boy comes to school to
 learn.
 He never looks at girls;
 Time is too precious for this lad
 And his brain it seldom whirls.

IDA STUCKER Cameron, Mo.
 Teacher Training Club.
 She's going to be a school ma'm.
 And rule the children gay.
 But we doubt this because of
 something
 We heard Paul Egbert say.

HOWARD PECK Cameron, Mo.
 Boys Glee Club
 A great kid, never grouchy,
 He's always jolly and quite a
 pal.
 He's a wonderful fellow, and
 when he's married
 Happy will be the lucky gal.

LAVANGE DUNNINGTON
 "Jodie" Cameron, Mo.
 Girls Glee Club, Pep Squad, Ama-
 nuenses Club.
 With hair as black as ebony
 And eyes that sparkle too,
 I ought to have my own way,
 What's more, I always do.

HERBERT ENSIGN Cameron, Mo.
 He comes to school to get an
 education.
 We can't tell how far he's
 advanced,
 He's never said anything that
 we've heard,
 In classrooms he seems in a
 trance.



IRENE KIMES Cameron, Mo.
 Debate Club, Pep Squad, Latin Club.

A good natured girl was wanted
 Irene was sent to us:
 So quiet and unassuming,
 For she never thinks to fuss.

IRA KIMES Cameron, Mo.
 "Tud."

Football Letter Man '25-'23, Track Letter Man '26, Hi-Y, Basketball Letter Man, "C" Men's Club, Debate Team, '25-'23, Board of Control Pres., Editor-in-Chief, Mystic.
 Yes Tud's a fellow fine and true,
 He's full of fun, yet true blue;
 He's Mrs. Warner's favorite pet,
 But he'll make him mark somewhere yet.

RUTH LILLIAN QUIGLEY
 "Ruthie" Cameron, Mo.
 Girls Glee Club, Girls Quartette, Pep Squad, Debate Club, Mystic Staff, Latin Club.

A laugh and a smile on her way
 She goes so blithely along her way;
 She's a student too and no mistake
 And many friends her work does make.

NATHAN JONES Cameron, Mo.
 "Cracker."

Football Letter Man '25-'23, "C" Men's Club, Treas., Hi-Y, Tank Staff Business Manager.
 A lively fellow this H. S. lad
 Never known to do anything bad (?)
 He likes the girls both large and small
 In fact, we think he likes them all.

MARJORIE DYCHIE Cameron, Mo.
 "Marge."

Pep Squad, Mystic Staff, Latin Club, Mystic Queen.
 Oh she can laugh and joke and run
 Around with boys, but yet there's one;
 She's a student rare and gets her due,
 But to one of the men she's still true blue.





PAUL GRAHAM Cameron, Mo.
A very small boy is Paul
But we doubt if he knows it all;
He never says anything to us.
And we've never heard him fuss.

DONALD KING Cameron, Mo.
This is our glorious "King"
Whose word every one relies on;
He never does a foolish thing.
But always does a wise one.

NELLIE HARRIS Cameron, Mo.
Amanuenses Club.
As good in her studies as she is
small
She works in "Billy's" and
serves us all;
She is always quiet and very shy,
But a very good friend to you
and I.

DELIA HUEY Cameron, Mo.
"Kid."
Girls Glee Club, Amanuenses
Club, Pep Squad.
Real cute "kid" we must confess,
Never gets up till half past
eight;
Then she goes to school on the run
Only to find that she is late.

IVAN ZANCKER Cameron, Mo.
"Skeezix."
Football Squad, Basketball Squad,
Track Letter Man '26, Hi-Y, Mys-
tic Staff.
A fiend for work, for play a lad
That never yet has gone home
mad;
He likes one girl most all the time
And of "The Kid" he'll ever
chime.



HELEN CHENOWETH, Cameron, Mo.
 Pep Squad, Latin Club.
 A charming miss, with smiles
 enough,
 For high school boys it sure
 seems tough.
 For college shieks are always near
 And for us she doesn't seem to
 care.

HADLEY CRAWFORD, Cameron, Mo.
 Glee Club, Football Squad, Boys
 Quartette.
 Quiet in everything but song.
 And in this he never quits;
 The right sort of fellow to have
 along;
 For in a crowd he surely fits.

RETA MAY MEEK, Cameron, Mo.
 Girls B. B. Squad, Girls Glee Club,
 Amanuenses Club.
 She's known as "Red" we wonder
 why?
 You couldn't find one if you'd
 try;
 Who had more mischief in her eye
 And it'll be till her day to die.

CHARLES SHAW, Cameron, Mo.
 "Charlie."
 Football Letter Man, Basketball
 Letter Man, Boys Glee Club, Pres.
 Hi-Y, Sec. Beard Control, Vice-
 Pres. Senior Class.
 He is very quiet, so we see,
 Silence is golden only from one,
 So we think we plainly see
 Why some people have the fun.

HELEN KAPKE, Cameron, Mo.
 Girls Glee Club, Amanuenses Club.
 She's one of the so called "Senior
 Gang."
 And a jolly good kid to be
 around;
 Every one wants her for a friend
 And hope her friendship won't
 run in the ground.



ALICE CAMPBELL Cameron, Mo.
Girls Glee Club, Teacher Training Club.
Modest and shy as a nun is she,
Determined to succeed;
Learning by studies must be won,
She's proved this fact indeed.

RAYMOND WARNER Cameron, Mo.
Basketball Letter Man, Hi-Y,
Boys Glee Club, "C" Mens Club,
Track Letter Man '26.
The high school "Cowboy" as he
is commonly known,
Yet we believe few wild oats
he has sown;
His "Charleston" stunts are the
ones that take,
Though they give him many a
pain and ache.

LARUE M. DAVIS Cameron, Mo.
Teacher Training Club.
A jolly good kid and an all around
sport,
She's to be a nurse, we heard
the report;
Good luck to her; we know she'll
be
Good to her patients and not
treat them mean.

GLENN TRACY Cameron, Mo.
Common sense is an uncommon
thing
But this boy has a good measure;
He is quiet, especially around the
girls.
But always ready for pleasure.

PAULINE REMPFER Cameron, Mo.
Basketball Squad, Amanuenses
Club.
Good in her studies, we must
declare,
And she has happiness as well
as care;
For every one seems happy with-
in her reach.
Sometimes we wonder if short-
hand she'll teach.

The MYSTIC



JOY CARPENDER Cameron, Mo.

Girls Glee Club, Girls Quartette,
Pep Squad, Teacher Training Club.

A fluent tongue, a ready smile,
A willing hand, a girl worth
while.
This is our "Joy" by her "giggles"
gay
We know she's around and not
far away.

KESTER ARNOLD Cameron, Mo.

Hi-Y, Basketball Squad.

For foolish questions he wins first
Tho' never yet his head has
burst;
He's not a bad scout tho, we know
And if given time, his mind
will grow.

ALICE FOLSOM Cameron, Mo.

Girls Glee Club.

She is quiet and demur,
And we know her thoughts are
pleasant;
Just a lassie we admire,
And with the gang she's always
present.

WESLEY FOSTER Cameron, Mo.

Football Squad, Basketball Squad,
Boys Glee Club, Boys Quartette,
Orchestra, Sec. & Treas. Senior
Class, Tank Staff.

When I'm dressed all in my best
To walk around wth Louise,
She is the darling of my heart,
Though she sure does love to
tease.

EDNA EASTER Cameron, Mo.

Basketball Squad, Amateurs
Club.

Edna is a studious little lass,
And is always found at the
head of her class;
She never flirts, Oh No!
She even lets her long hair grow.



FRANCES CATHICART Cameron, Mo.
Girls Basketball Captain '26, '27.
Girls Glee Club, Teacher Training Club.

"Toots." hails as our basketball captain this year.

She is good looking, we hear,
Of dates she has a plenty.

And often times she thinks too many.

ROSWELL FARRIS Cameron, Mo.
Football Letter Man '26, Basketball Letter Man '27. Hi-Y, "C" Men's Club.

"The Shiek" to us is always known
And when he calls them on the phone;

They always say, as they answer him,

Oh, come on over, for I'll be in.

FRANCES MOORE Cameron, Mo.
Tank Staff Exchange Editor.

Another girl blessed with brains
And cannot keep them still;

But she's a girl and so she talks.
She always has and always will.

LOUIS KANAN Cameron, Mo.

Football Letter Man '26, Basketball Letter Man '24, '25, '23, '27, Basketball Captain '27, Hi-Y, Vice-Pres "C" Mens Club.

A fine fellow is he to know,
Of course in basketball we think so;

For he's our captain of '27 and six,
And in this game he knows his tricks.

HENRIETTA MOORE Cameron, Mo.

A good student, a fine girl,
Makes the best of them take a whirl.

But that's no wonder; she studies too,

For she has nothing else to do.



RIIEVA McCLURE Cameron, Mo.
Girls Glee Club, Teacher Training Club.

She's from the country and has a Ford,
And always takes the entire group;
Never less than six and that's not too many,
For there are eight in the bunch and room for twenty.

HERNDON MULLENIX Camerin Mo.

A quiet and studious lad is he,
We wonder what a man he'll be;
A very good guy and a student rare,
We would say more if we dared.

MILDRED NICHOLS Cameron, Mo.

Tank Staff, Pep Squad, Latin Club
She's nearly always laughing,
In fact, she's full of fun,
A ready smile, a fluent tongue
For someone she's the one.

ANN RICHARDSON Cameron, Mo.
Glee Club, Basketball Squad,
Teacher Training Club, Pep Squad, Camp Fire Girls.

She stays with the Prof. so ought to be good,
But we can't understand her as we should,
She says a lot that hasn't much weight,
But to school she is seldom late.

EWING HUNTER Cameron, Mo.

Orchestra '24, '25, '26, '27 Pres.
Track Letter Man '25, Track '26,
Hi-Y, "C" Mens Club, Mystic Staff
One in the class we can't understand,
Maybe because he's Floy's man;
He plays the trombone for all he is worth,
In any orchestra he should land a berth.



EFFIE A. MORTON Cameron, Mo.

Basketball Team '26, '27, teacher-
training Club.

A member of the Dragonettes.
Lively kid and full of pep
Always ready to do her part.
Every one likes her from the
start.

KATHRYN HEINZ Cameron, Mo.

Amanuenses Club.

She keeps us wondering an awful
sight.
For she never talks a single
mite;
In school she gives the best she
has,
And that's enough for any lass.

JOHN KIRKENDOLL Cameron, Mo.

In all his classes he's a whiz,
And in everything he knows his
biz:
What most of us take an hour to
tell,
He'll tell in a minute and do it
well.

GLYNN GARNER Cameron, Mo.

Tank Staff.

And still they gazed,
And still the wonder grew,
That one small head
Could carry all he knew.

FRANCES LAURA EAVES

Amanuenses Club. Cameron, Mo.

Another girl who is seldom still,
And on the piano she shows
her skill,
With all of this she's a student
rare,
In all her studies she is square.

The MYSTIC



ANNA MARY HUTTON
Cameron, Mo.
Teacher Training Club.
So unaffected, so composed a mind
Never leaves her studies behind,
Her intentions are the best
And to you we leave the rest.

ORIN KANAN Cameron, Mo.
Football Letter Man, Basketball
Squad, Boys Glee Club, Hi-Y Pres.,
"C" Mens Club, Track Squad '23,
Board Control Treas.
The best you have give to your
school
And always obey every rule;
This is his motto and you'll find
it true,
For he always has, and it may
help you.

FRANCES URBAN Cameron, Mo.
Girls Glee Club, Debate Club,
Board of Control, National For-
ensic League.
We're sure she'll reach the hall
of fame,
For she studies hard which is
something rare;
But she is just Frances and al-
ways the same,
For she always plays the game
fair.

WILLIAM PITTMAN Cameron, Mo.
Hi-Y, Football Letter Man,
Track Squad '26, "C" Mens Club.
If it wasn't for the girls I
wouldn't be happy,
Tho some of them may think
me suppy.
Well then! I do plainly see
This busy world and I shall
not agree.

MARY ELIZABETH BIGGERSTAFF
Cameron, Mo.
Girls Glee Club, Girls Quartette,
Debate Team, Pep Squad, Tank
Staff, Latin Club.
Our debator, and to hear same
speak,
It's far from saying her voice
is weak,
She's in for fun. Oh boy you said
it,
For "school spirit" we give her
credit.



AUSTA B. PRICE Cameron, Mo.
Amanuenses Club.

If half the world had half her pep
Oh what a world it would be;
She's small but watch your step.
And what I tell you, you shall
see.

RUBY COUSINS Cameron, Mo.
Girls Glee Club, Pep Squad,
Camp Fire Girls.

She's a ruby, a taken true,
She surely was named aright.
She may make grades that are
not E's,
But in her dates she shows her
might.

VINCENT LAWLER Cameron, Mo.
The well known artist of the
Senior Class.

He's sure to complete it, if
given a task:
Doesn't say much except about
school,
And then keeps still, as a gold-
en rule.

ROGER FELLERS Cameron, Mo.
Football Squad, Basketball Squad,
His name we've heard them say is
Fellers,

But of his fate he never hollers,
He has always been known to
obey the laws,
And never says seen instead of
saw.

MARY MALLEEN Cameron, Mo.

Smiles and good fellowship light
her face,
For light without laughter is
dull.
If she keeps on at her usual pace
She'll get there after all.



MILDRED E. GAMET Cameron, Mo.
A lively girl with pretty eyes,
We know, to have her would be
a prize;
But she's another's we understand
And he is not a H. S. man.

ELENA CALDWELL Cameron, Mo.
Treas. Teacher Training Club.
If she does it; it's well done,
And she is always full of fun.
A teacher training lass is she,
From early morn' to set of sun.

ALVIN EASTER Cameron, Mo.
In his studies Alvin's a shark (?)
And this is not a sky remark
His disposition is so rare,
He always plays the whole
game fair.

JOHN WAUGH Cameron, Mo.
A teacher training student so rare
Studies hard tis' often said;
We'll say this much, that he is
square,
And there's something in his
head.

PEARL MORELOCK Cameron, Mo.
We don't know that she talks a
lot,
We never saw her ramble;
But she to her several classes
goes,
And on that we'll gladly
gamble.



MERLIN STRONG Cameron, Mo.

Drives an Essex and takes some girls,
It's usually Juniors we hear,
But if college shieks will keep out of his way,
We know he has nothing to fear.

PAUL CARPENDER Cameron, Mo.

Football Letter Man '25, '26,
Football Captain '23, "C" Mens Club,
Boys Glee Club, Boys Quartet.
He was a captain,
And a rare good guy,
He has lots of friends,
'Cause he never does cry.

KLORIS HANCOCK Cameron, Mo.

Of all the days that's in the week
I dearly love but one day,
And that's the day that comes betwixt,
A Saturday and Monday.

KLYDE KERSEY Cameron, Mo.

Football Squad, Basketball Squad,
Yell Leader.
A fellow who is a printer by choice,
He leads yells and still has a voice;
He comes to his classes once in a while,
And his face is apt to break with a smile.

HOWARD PECK Cameron, Mo.

Boys Glee Club.
A great kid, never grouchy,
He's always jolly and quite a pal.
He's a wonderful fellow, and when he's married,
Happy will be the lucky gal.



GRETCHEN FLANDERS
Cameron, Mo.
Teacher Training Club.
Happy and jolly is this maid
And of all talk is unafraid.
When you do as she says things
go well,
And she's a good miss we're
here to tell.

LIONEL CHAPMAN Cameron, Mo.
Boys Glee Club.
"Dink" to us he is commonly
known,
Altho he's called the H. S. wit,
At the girls he always winks,
And some dates he has, we bet.

MAE BURKETT Cameron, Mo.
Girls Basketball Team, 1926-27.
We're sure her life will be filled
with peace,
And happiness will never cease.
She's quiet, yet happy and friend-
ly too,
And as a pal she's sure true
blue.

GEORGE BOTHWELL Cameron, Mo.
Basketball Squad.
You've missed a lot if you don't
know Bothwell.
For he's a good fellow, if you'll
let us tell,
He never says much, for he always
thinks twice,
And this is the reason we think
him so nice.

FRANCES WARNER Mabel, Mo.
Girls Chorus, Debate Team, Tea-
cher Training Club.
We could not write upon a page,
The things we'd say will not
assuage,
For she's a jewell and no mistake
And for someone a find will
make.



Poor baby.



All right Tud!



Now you quit.



Shanty.



Capt. Paul.



Spikes---Ouch!

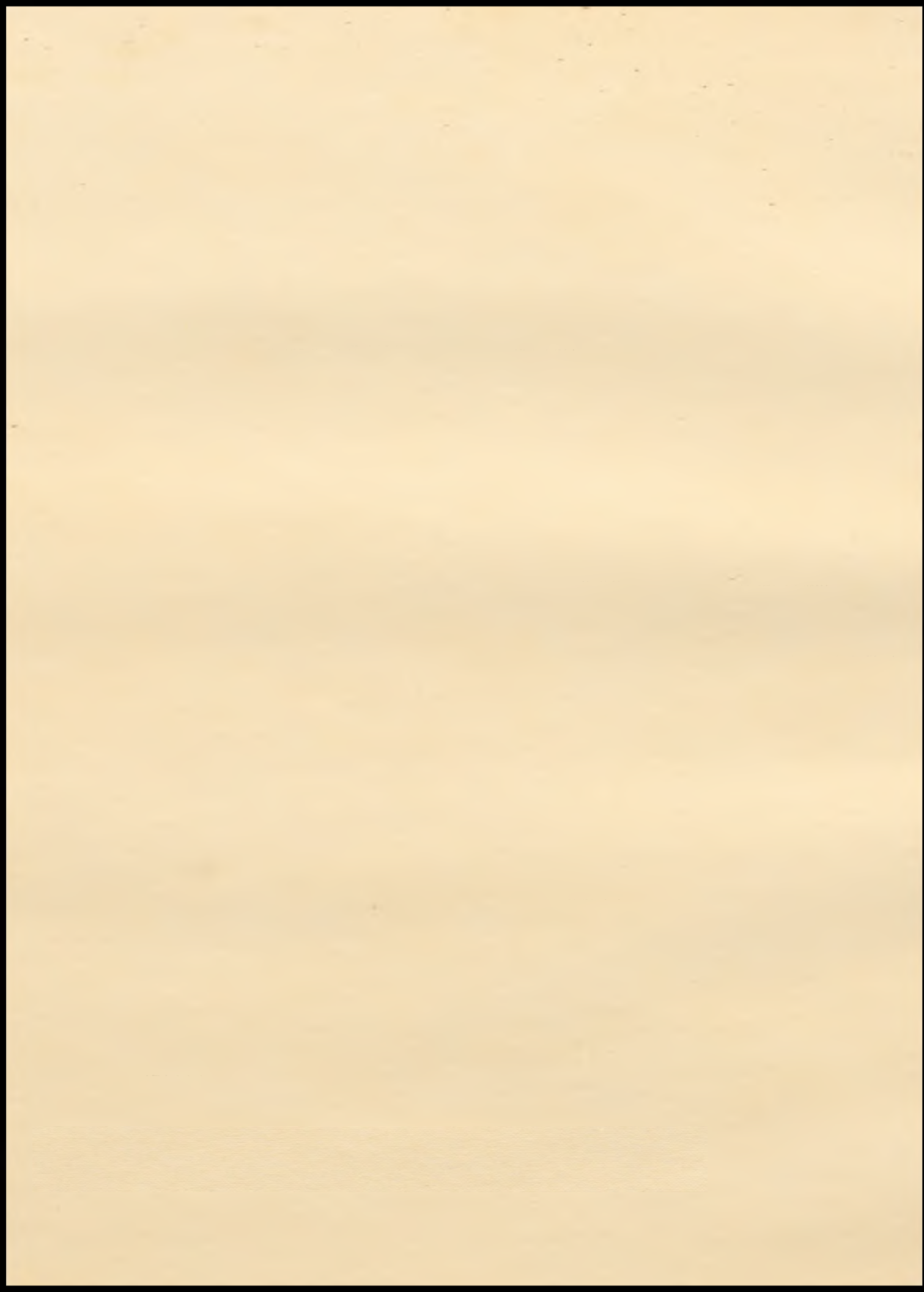


Too bad Jones.



MARJORIE DYCHE
THE MYSTIC QUEEN

Photo by
A. S. Brown





Junior



WARD L. SHELDON Cameron, Mo.
"Vic"

Football Letter Man '26. Capt-elect. Basketball Letter Man '27, Class Sec. & Treas. 1st semester. Hi-Y, Boys Glee Club, Board of Control.

"Vic" is a close rival to "Holly" in gaining the love of the ladies.

MARY BYERS Cameron, Mo.
Well—for Pete's sake.

ADAH MOORE Cameron, Mo.
Orchestra, Cornet, Quartette.
Talent plus a pleasing personality.

CARROLL GILLIS Cameron, Mo.
Orchestra, Cornet Quartette.
"Oh! If he only played jazz."

IRENE SHIRTS Cameron, Mo.
Girls Basketball Squad, Board of Control, Tank Staff, Pep Squad, Latin Club, Pres.
Truly a queen of merit.

ODUS L. WHITEAKER Cameron, Mo.
Far too good-looking to be a farmer.

DICK ARNOLD Cameron, Mo.
"Now I say," is that nice?"

OLIVE KETTENRING Cameron, Mo.
Teacher Training Club.
A girl every one likes.



EDGAR BRYANT Cameron, Mo.
Sport Editor Tank, Hi-Y.
Another victim of romance.

RUTH SHACKELFORD Cameron, Mo.
Com'ine beauty, silence, and wit,
and you have the perfect woman.

MARTHA BUCKLEY Cameron, Mo.
A girl so sweet is not often found.

WAYNE MAYES Cameron, Mo.
Oh, now, you wouldn't do that,
would you?

ERA SLOAN Cameron, Mo.
Basketball Team '26, '27.
Era is one grand little running
center, who can more than hold
her own against any adversary.

ROBERTS MIDDLEBURY Cameron, Mo.
Still water runs deep.

MOSS AUTEN Cameron, Mo.
Football Squad, Basketball Squad,
"C" Men's Club, Track Letter Man '26
Receives his news from K. C.

PEARL KAGAY Cameron, Mo.
Basketball Squad.
Never speaks until spoken to.



HOLWITH PARTIN Cameron, Mo.
"Holly."

Football Letter Man '26, Basketball Letter Man '26, '27, Track Letter Man '25, '26, Hi-Y, Class Sec. & Treas. first semester, Vice-Pres. class second semester, "C" Men's Club.

Why is our "Shiek" so interested in girl's basketball?

MARGARET JONES Cameron, Mo.
Girl's Glee Club, Girl's Basketball Team.
Jimmy Jumpin' Center.

KATHERINE GALE Cameron, Mo.
Girl's Glee Club, Pep Squad.
The college boy's girl.

DEAN ROLFE Cameron, Mo.
Basketball Squad, Track Squad.
Is it possible that Dean would ever fall asleep in class

LOIS BRYAN Cameron, Mo.
Orchestra, Pep Squad.
Her accompanying is not restricted to the orchestra.

FRANCES WRIGHT Cameron, Mo.
Pep Squad.
Know her, laugh with her, love her.

MILDRED SCHLEICHER Cameron, Mo.
Chee-y giggle, laughing mischief in her eyes; and added to that she's awfully wise.

MILDRED KELSEY Cameron, Mo.
Accompanist, Boy's Glee Club, Accompanist, Girl's Glee Club, Girl's Quartette.
Winged fingers that make the piano speak.



HELEN SCHNEIDER Cameron, Mo.
Precious things come in small packages.

RALPH ENTRIKIN Cameron, Mo.
Track '26.
Always around, but in no usual place.

EVELYN LEASK Cameron, Mo.
Well liked, even if she is bashful.

RAY McCOMMAS Cameron, Mo.
Orchestra, Cornet Quartette.
Witty and small, that's not half all.

ANTHONY HILLEBRAND
Cameron, Mo.
Boy's Glee Club, Basketball.
The Freshman girls are pretty?

RUSSELL WILLIAMS Cameron, Mo.
Football Squad, Debate Club.
"Now what this class lacks is co-operation."

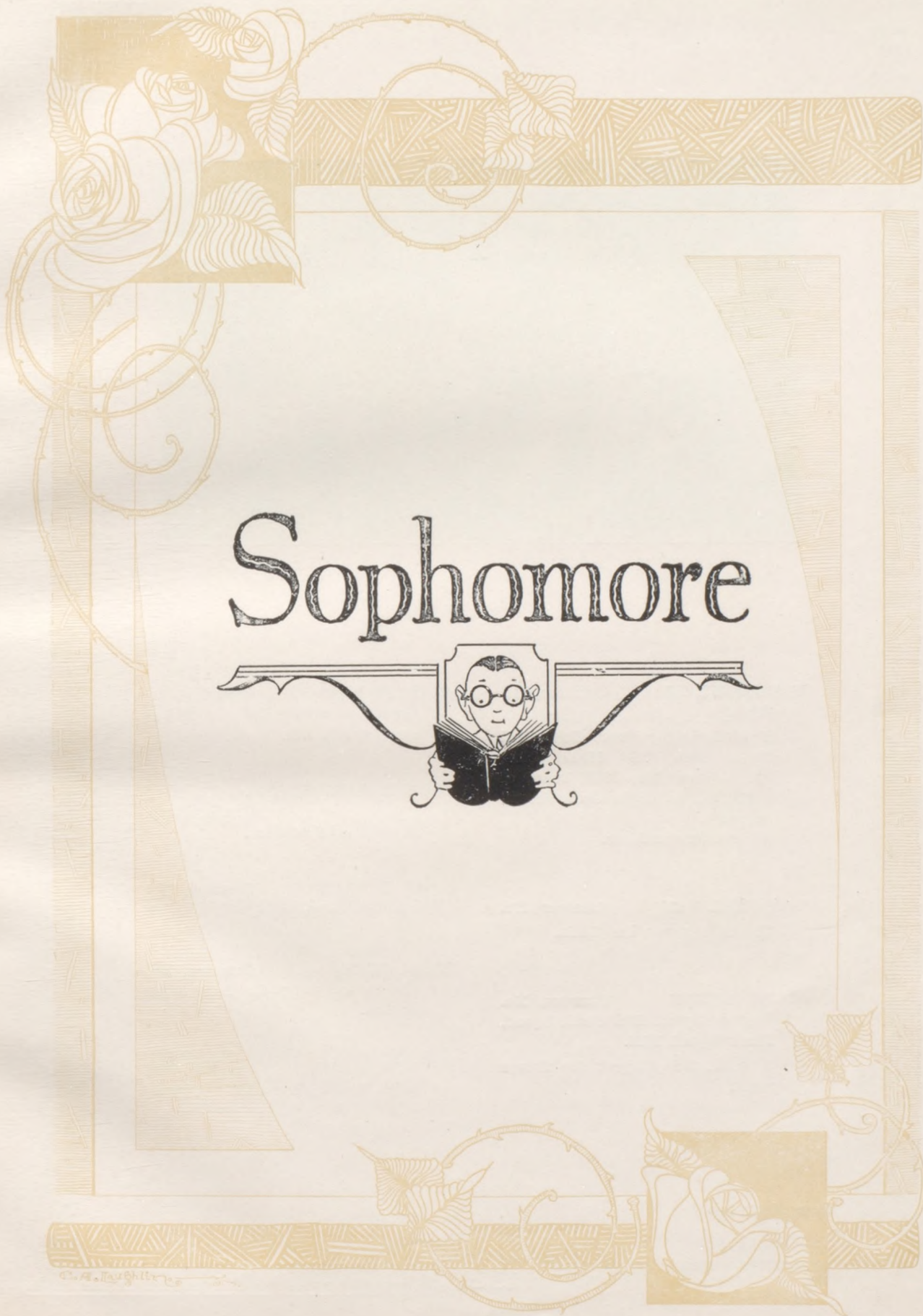
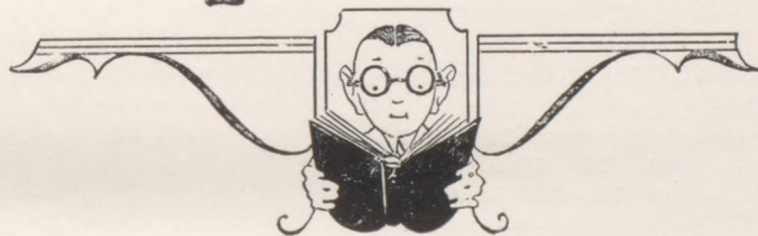
RICHARD MARION BOWMAN
Cameron, Mo.
Orchestra, Class Pres. 1st and 2nd Semester.
What I don't know about H. S. isn't offered.

EARL MORTON Cameron, Mo.
What I don't know about "Fords" isn't worth knowing.

The MYSTIC



Sophomore





HADLEY KIMES Cameron, Mo.
"Had."

Football Letter Man, Basketball Letter Man, "C" Men's Club, Track Letter Man 1926, Board of Control, Pres. Soph. Class Second Semester.
An excellent athlete.

LORENE KANAN Cameron, Mo.
She sure knows her Latin.

CLYDE GARVIN Cameron, Mo.
Football Squad, Basketball Squad, Track Squad 1926.
A wonderful prospect for future years.

BURLAH BIRD Cameron, Mo.
Quiet as a mouse, but no trap has ever caught her.

DOROTHY CRAWFORD Cameron, Mo.
A very good student.

JOHN GROEBE Cameron, Mo.
One of our farmers.

EMMA WITT Cameron, Mo.
She is as witty as her name implies.

EUGENE TRICE Cameron, Mo.
Another star in Caesar's crown.

The MYSTIC



KERMIT KNOCH Cameron, Mo.
Orchestra, Latin Club.
His favorite color is "Brown."

MILDRED BROWN Cameron, Mo.
Latin Club.
Henry Ford never invented anything that could make more noise than she.

VIRGINIA PORTER Cameron, Mo.
Girl's Glee Club.
A little girl with a darling smile.

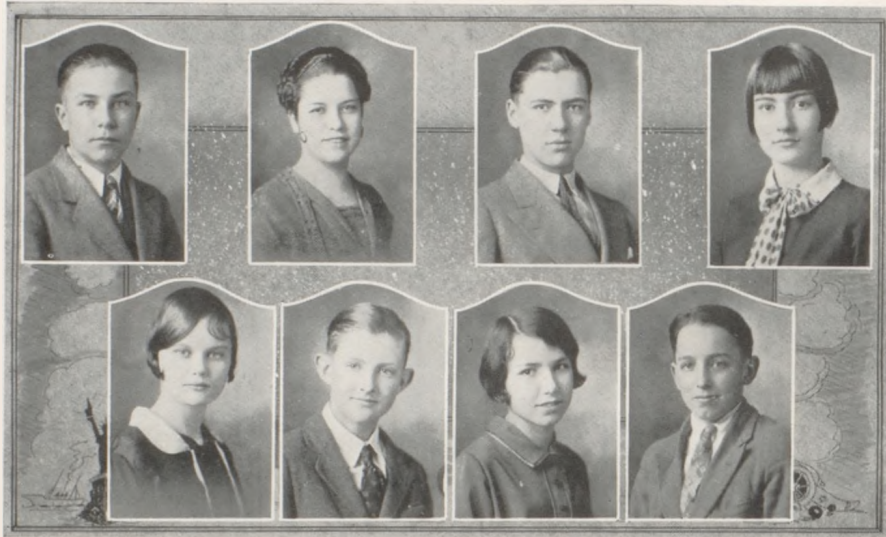
LOWELL FOLSOM Cameron, Mo.
Football Squad, Orchestra.
Don't worry about me I'll take care of myself.

DENNIS DORSEY Cameron, Mo.
Orchestra, Latin Club.
There are some boys who remind us of angels—they are so different

REVE FITE Cameron, Mo.
I will not "Selle" him on any terms.

HELEN NELSON Cameron, Mo.
Latin Club.
A truly good girl in her place.

DONALD EAVES Cameron, Mo.
Football Letter Man, Basketball Squad, Orchestra, "C" Men's Club.
"Coach, got any more shoes?"



JAMES RUSSELL Cameron, Mo.
Orchestra, Latin Club.
A musician rare and a student
too.

CORRINE SMITH Cameron, Mo.
Wanted: An automatic powder
puff.

QUINTUS MILLER Cameron, Mo.
He's in the show business.

LOUISE HORD Cameron, Mo.
Alert and talkative.

GUENAVERE KNOCH Cameron, Mo.
Wants everything she sees.

WILLIAM MALLORY Cameron, Mo.
A quiet boy with a studious air.

FLORENCE CONNER Cameron, Mo.
Latin Club.
Listens to what others have to
say.

CHARLES CALDWELL Cameron, Mo.
He knows his Latin (?)



MAURICE CATER Cameron, Mo.
Orchestra, Latin Club.
Has time to eat five meals a day.

BESSIE NEWBY Cameron, Mo.
Latin Club.
Sober, steadfast and demure.

LOUISE GILLILAND Cameron, Mo.
Girl's Glee Club.
Life's a jest, is her belief.

AMELIA THEILMANN Cameron, Mo.
Quiet until you know her and
then—!

HELEN CHIVENS Cameron, Mo.
Aren't boys silly?

AILENE BROWER Cameron, Mo.
Basketball Letter Girl '27, Girl's
Glee Club.
By her magic touch she rolls
music to our very souls.

JESSIE FOSTER Cameron, Mo.
Boy's Glee Club, Latin Club.
He speaks well of his neighbors.

GRACE WILEY Cameron, Mo.
Girl's Glee Club.
"Yes, I'd like to be a farmer's
wife."

The MYSTIC



MAXWELL BUCK Cameron, Mo.
 Boy's Glee Club.
 He stands close to the head of
 his class alphabetically.

DOROTHY CALHOUN Cameron, Mo.
 In some things she isn't especial-
 ly quick.
 But watch her shine in commere-
 cial arithmetic.

MARJORIE SIMMONS Cameron, Mo.
 Girls Basketball Squad.
 A Junior who by mistake slipped
 in here.

HOWARD BENDER Cameron, Mo.
 Football Squad.
 He'll be a Senior by and by.

DOROTHY SMART Cameron, Mo.
 Always ready for mischief.

DEBORAH BALDWIN Cameron, Mo.
 Girl's Glee Club.
 She sure scores the grades.

OPAL HANCOCK Cameron, Mo.
 Has a sweet disposition which
 draws many friends.

LOUISE DeSHON Cameron, Mo.
 Girl's Pep Squad. Pres. Soph.
 Class 2nd Semester.
 She's jolly and clever
 But silent? No, never.

The MYSTIC



LELAND WARNER Cameron, Mo.
 Football Squad. Vice-Pres. Soph.
 Class 2nd Semester.
 He knows what he knows when
 he knows it.

ESTHER SHAW Cameron, Mo.
 Girl's Glee Club.
 She has won many friends and is
 still winning them with her smile
 and willing hand.

ALMA GIBSON Cameron, Mo.
 Ready in heart and ready in hand.

ROLLAND SELLE Cameron, Mo.
 I'll Fite for her.

HYLA DICE Cameron, Mo.
 A sweet amiable girl.

FRANCIS WATSON Cameron, Mo.
 You can't always tell about those
 brown eyed girls.

EARL PORTER Cameron, Mo.
 Bye-Bye—Crowe.

LELAN RYAN Cameron, Mo.
 So well-versed in agriculture he
 can estimate the exact number of
 seed in any pumpkin.



CHARLES PENNY Cameron, Mo.
One of our suburban farmers.

DOROTHY STADE Cameron, Mo.
Glee Club.
Well acquainted with "Garvie."

GOLDIE SLOAN Cameron, Mo.
Quite bashful and very shy.

MURIEL DAVIS Cameron, Mo.
Girl's Glee Club.
Fortune helps those who help
themselves.

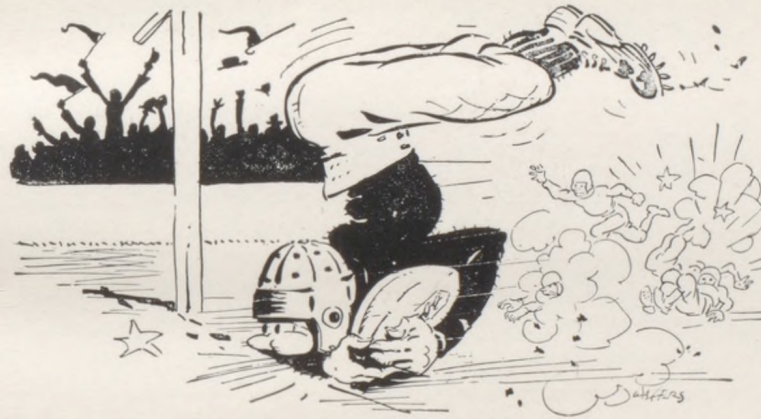
LEONA SMITH Cameron, Mo.
A studious little girl.

CATHERINE CLINE Cameron, Mo.
If silence was gold, she would be
a millionaire.

CLARENCE ZIMMERMAN
Cameron, Mo.
One of Mr. Gross's "Ag" boys.

LOUISE BERTEN Cameron, Mo.
A credit to the institution.

ATHLETICS





ROBERTA COOK

Maryville, Mo.

Full of pep. and with a thorough knowledge of her work, she has made an enviable record for her first year of teaching. She is possessed of a pleasing personality, and is untiring in her efforts in either the class room, gymnasium or field.

ARTHUR H. DOOLEN

Manhattan, Kansas

Possessed of an unusual knowledge of the games he coaches, having started in them in the university, he readily gets results in his teams, instilling in them the spirit of "one for all, and all for one," and above all clean sportsmanship.

"For when the one Great Scorer comes,
To write against your name,
He writes not if you won or lost,
But did you play the game."



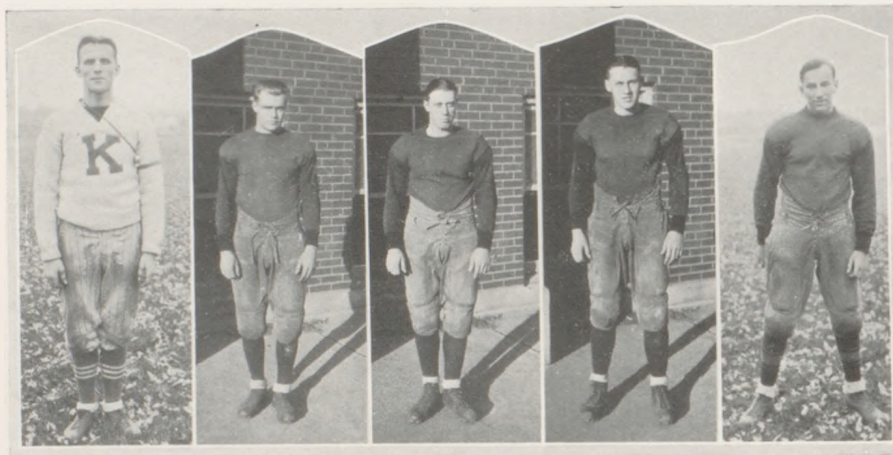
FOOTBALL SQUAD

Front Row, Left to Right—Sheldon, H. Kimes, Simpson, McDaniels, Jones, Carpender, Partin, Packham, Kimes
 Second Row—Stoffle, Parks, Shaw, Kanan, Eaves, Zancker, Bowman, Crawford, Auten, Howard, Couch Doolen.
 Third Row—Folsom, Anderson, Pittman, Foster, Baker, Farris, Warner, King.
 Fourth Row—Bender, Fellers, Phelps, Warner, Baker, King.

“Did you root for the boys from our sidelines,
 Just as “wild” as if we were winning?
 Or a e you one that got up and left
 At the end of the first lost inning?
 Defeat is hard luck, or defeat’s in the game—
 Oh, defeat is just what you make it
 It isn’t the fact that we lost that counts,
 But only how did you take it!

They haven’t a chance? Tut, tut, Old Scout,
 Play up with a smiling face.
 ’Tis nothing against them to lose the game—
 Your desertion’s the worst disgrace!
 The harder you’re thrown, why the higher you bounce—
 Be proud of your blackened eye;
 It isn’t the fact that we lost that counts,
 But how did you root and why!

And though they lost at the last, Old Scout,
 If you played the best you could—
 If you played your part from our sidelines,
 Why, the boys will call it good,
 Games come and games go each fleeting year,
 We win or we lose, ’tis true,
 And if isn’t all due to the boys in the game,
 For it’s partly up to you.”
 —Clytie Daniel.



COACH ARTHUR H. DOOLEN

Manhattan, Kas.

"Art" has proven himself to be not only a star on the Aggie teams but has also shown his worth by making phenomenal success with all his teams. He is possessed of a thorough knowledge of the game and a pleasing personality to accompany it.

PAUL CARPENDER

Fullback

Cameron, Mo.

160 lbs.

5 ft. 9 in.

20 yrs. old

Paul, captain and fullback of the 1926 Dragons, was the hardest hitting backfield man on the team. Paul played a good game and was a fine leader. He will always be remembered by his line smashing and deadly tackling in the last few minutes of the Chillicothe game.

WARDELL SHELDON—"Vici"

R. Tackle

Cameron, Mo.

180 lbs.

5 ft. 9 in.

20 yrs. old

Captain elect for 1927. "Vici" will make a real leader next year. He played his best game against Central. His ability and experience will make him the mainstay of the next year's team.

HOLWITH PARTIN—"Hollie"

Center

Cameron, Mo.

170 lbs.

5 ft. 11 in.

18 yrs. old

Partin was our scoring center, he broke through the line in the Central game and picked up a fumble, scoring the only touchdown. He did the same stunt in the Lafayette game. He will be our center next season.

IRA KIMES—"Tud"

L. End

Cameron, Mo.

155 lbs.

5 ft. 11 in.

18 yrs. old

"Tud" was the boy who was always taking those short passes out of the air. His speed, ability and aggressiveness made the opponents fear his side of the line.

The MYSTIC



NATHAN JONES L. Guard Cameron, Mo.
140 lbs. 5 ft. 5 in. 18 yrs. old
The biggest little man who ever put on a football suit. He feared nothing and was in all line plays. He graduates this spring.

FORREST SIMPSON—"Fat" R. End Cameron, Mo.
165 lbs. 5 ft. 8 in. 19 yrs. old
A hard fighter who stopped many a play before it got started. He will be back next fall and will be a powerful man.

HUGH SLOAN—"Grapes" R. Guard Cameron, Mo.
145 lbs. 5 ft. 7 in. 17 yrs. old
A boy that could talk as well as play football. He will be back next year talking and fighting for the Dragons.

RUSSELL PACKHAM—"Pack" L. Tackle Cameron, Mo.
175 lbs. 5 ft. 11 in. 19 yrs. old
A hard fighting and sure tackler; he had the ability to diagnose plays that spelled defeat to many teams. "Pack" was never down in grades but occupied a place on the honor roll the entire year.

HADLEY KIMES—"Had" L. Half Cameron, Mo.
175 lbs. 5 ft. 11 in. 16 yrs. old
"Had," the big boy who with his ability and aggressiveness made his opponents fear him. He will wear the Dragon moleskins two more years.



ORIN KANAN R. Half Cameron, Mo.
 155 lbs. 5 ft. 10 in. 18 yrs. old
 Our kicker and punter who could carry the ball when called on. Especially good on come back plays. A senior who will be greatly missed next year but who has left a goal for some new man to reach.

CHARLES SHAW—"Charlie" Fullback Cameron, Mo.
 150 lbs. 5 ft. 9 in. 18 yrs. old
 The old war horse who when called on was always good for a few yards and was a stone wall on the defense. A senior and one who will give good competition on a college squad.

PAUL McDANIEL—"Mac" Quarterback Cameron, Mo.
 145 lbs. 5 ft. 7 in. 16 yrs. old
 "Mac" was the field general; with his year's experience he should be a valuable player next year. He has two more years with the Dragons.

LOUIS KANAN—"Shanty" L. Half Cameron, Mo.
 150 lbs. 5 ft. 8 in. 19 yrs. old
 "Shanty" was a clever, shifty, and speedy backfield man. He is leaving us and will make some college a good man.



ROSWELL FARRIS R. Tackle Cameron, Mo.
 165 lbs. 5 ft. 11 in. 17 yrs. old
 Farris was a hard worker and developed into a powerful lineman. He will be missed from the lineup next year.

WILLIAM PITTMAN—"Bill" L. Tackle Maysville, Mo.
 160 lbs. 5 ft. 10 in. 18 yrs. old
 "Bill" just began to realize his possibilities toward the end of the season. Also a senior who will be missed next year.

BRYAN STOFFAL—"Stub" R. Guard Cameron, Mo.
 155 lbs. 5 ft. 6 in. 18 yrs. old
 "Stub" always gave his best when called upon, and developed into a real guard before the season ended. He will be back to do real things for the Dragons next year.

DONALD EAVES—"Don" R. Half Cameron, Mo.
 135 lbs. 5 ft. 4 in. 16 yrs. old
 A little man who could pick his hole, and will make them get up and step next year.

FOOTBALL RESUME

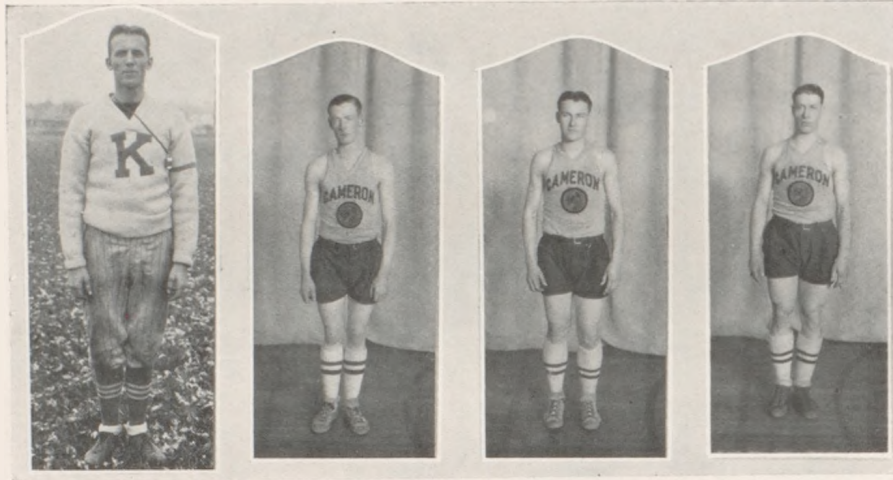
| WITH | AT | DATE | C. H. S. | OPPONENTS |
|-------------|-------------|---------|--------------|-----------|
| Lathrop | Lathrop | Oct. 1 | 0 | 0 |
| Maysville | Cameron | Oct. 12 | 10 | 7 |
| Lafayette | St. Joseph | Oct. 15 | 19 | 0 |
| Central | Cameron | Oct. 23 | 6 | 0 |
| Chillicothe | Chillicothe | Oct. 29 | 13 | 7 |
| Maryville | Cameron | Nov. 5 | 12 | 0 |
| Trenton | Trenton | Nov. 12 | 0 | 0 |
| Liberty | Liberty | Nov. 25 | 0 | 21 |
| | | | Total - - 60 | 35 |

"Perhaps he some time slipped a bit—
 Well, so have you.
 Perhaps, some things he ought to quit—
 Well, so should you.
 Perhaps he may have faltered—why,
 Why, all men do, and so have I.
 You must admit, unless you lie,
 That so have you.

Perhaps if we would stop and think,
 Both I and you,
 When painting some one black as ink,
 As some folks do,
 Perhaps, if we would recollect,
 Perfection we would not expect,
 But just a man half-way correct
 Like me and you."

BASKETBALL RESUME'

| WITH | AT | DATE | C. H. S. | OPPONENTS |
|--------------|--------------|---------|----------|-----------|
| Hamilton | Cameron | Dec. 17 | 21 | 12 |
| Easton | Cameron | Dec. 21 | 12 | 18 |
| Breckenridge | Cameron | Dec. 21 | 24 | 13 |
| Alumni | Cameron | Dec. 30 | 13 | 12 |
| Breckenridge | Breckenridge | Jan. 5 | 8 | 9 |
| Easton | Easton | Jan. 7 | 11 | 15 |
| Liberty | Liberty | Jan. 14 | 15 | 19 |
| Chillicothe | Cameron | Jan. 21 | 12 | 27 |
| Maryville | Maryville | Jan. 22 | 16 | 26 |
| Hamilton | Hamilton | Jan. 27 | 23 | 18 |
| Benton | Cameron | Jan. 29 | 34 | 32 |
| Robidoux | Cameron | Feb. 4 | 65 | 9 |
| Lafayette | St. Joseph | Feb. 11 | 19 | 23 |
| Maryville | Cameron | Feb. 17 | 17 | 25 |
| Benton | St. Joseph | Feb. 19 | 16 | 24 |
| Liberty | Cameron | Feb. 25 | 17 | 36 |
| Robidoux | St. Joseph | Feb. 26 | 27 | 16 |
| Chillicothe | Chillicothe | Mar. 4 | 27 | 35 |
| Graham | Maryville | Mar. 10 | 27 | 18 |
| Oregon | Maryville | Mar. 11 | 30 | 34 |
| Total - - | | | 434 | 421 |



COACH A. H. DOOLEN

Manhattan, Kansas

As a court director, "Coach" proved his worth. Using the Aggie style of the game, he instilled the fight into the team, and made an excellent showing for the season.

LOUIS KANAN, Captain

Forward

Cameron, Mo.

"Shanty" was a real leader and high point man of the team for the season. Coaches picked him as one of the best forwards at the Maryville tournament.

HOLWITH PARTIN

Guard

Cameron, Mo.

"Holly" was an aggressive, hard fighter, who often slipped down the floor to cop a few points. He will be with us next year and real things are expected of him.

WARDELL SHELDON

Center

Cameron, Mo.

"Vici" was the real find of the season. He came out for basketball for the first time and made good. We will hear more of him next year.



ROSWELL FARRIS Guard Cameron, Mo.

Roswell played his first year, but looked like an old timer. With his speed and size he made it hard for opponents to score.

CHARLES SHAW Forward Cameron, Mo.

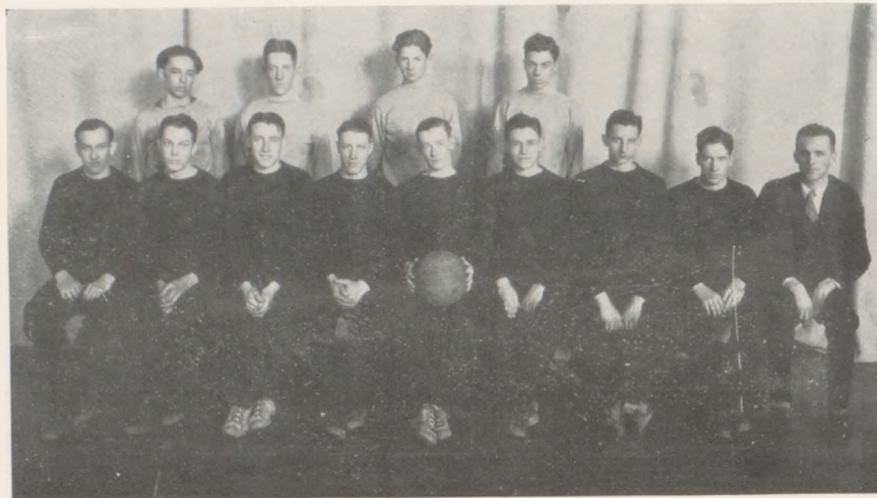
Charlie was the smallest man on the team. He covered the floor well and could always be counted on for a few baskets.

IRA KIMES Guard Cameron, Mo.

"Tud" was one of the hardest workers on the squad and usually managed to keep his opposing forward guessing.

RAYMOND WARNER Center Cameron, Mo.

Raymond was the Long John of the squad. With his size he got many a set-up shot.



Boys Basketball Squad

Front Row, Left to right: Kimes, Farris, Partin, Sheldon, L. Kanan, Shaw, Warner, O. Kanan, Doelen, Coach.

Second Row: Eaves, Bowman, Garvin, Foster.

To make a successful team a Coach must have only five players of more than ordinary ability, but must have a live bunch of fellows who come out night after night, the season through, giving and taking, never grumbling and always in the scrap. Although the season could not be spoken of as a phenomenal success, yet it showed the mettle of the men going out for the game and laid the foundation for a successful future in the court game.

"I'm but a cog in life's vast wheel
That daily makes the same old trip;
Yet what a joy it is to feel
That but for me the wheel might slip!
'Tis something, after all to jog
Along and be a first-class cog."



Girls Basketball Squad

First Row, Left to Right: Jones, Burkett, Morton, Armstrong, Calheart, Slean, Temple, Shirts.

Second Row: Harris, Meek, Easter, Remfer, Whitaker, Karay, Simmons, Miss Cook.

The girls, although slightly handicapped by a late start in practice, had a very successful season. Every girl on the team worked hard and their work produced a winning team.

The girl's team steadily improved throughout the season until in their final game they were able to defeat the strong Chillicothe team, a victory of which Caneon High is duly proud. The final count in games was five victories and three defeats, a very good record, and next year's chances look even brighter with Clara Armstrong, Era Slean, Aileene Brower, Margaret Jones, and Irene Shirts back. It looks good for a championship season.



MAE BURKETT Guard Cameron, Mo.
Mae has unusual power to snatch the ball from dizzy heights. Her quick active playing marked her an excellent guard.

EFFIE MORTON Guard Cameron, Mo.
A steady, consistent guard who used her head. She never gave up. She worked and worked and worked.

EVA TEMPLE Forward Cameron, Mo.
Eva's clever team work made her an outstanding player. Her ability to score from the free throw line helped run the score up for Cameron.

ERA SLOAN Running Center Cameron, Mo.
The efficiency with which she handled the ball made her a dependable player throughout the season. Cameron is fortunate to have her back next year.

CLARA ARMSTRONG Jumping Center and Capt.-Elect Cameron, Mo.
No matter how tall her opponent, Clara managed to out jump her. Her outstanding skill in managing the ball won her the honor of next year's captaincy.

The Season's Games

| WITH | AT | DATE | C. H. S. | OPONENTS |
|-------------|-------------|-------------|-----------|----------|
| Easton | Easton | January 7 | 8 | 18 |
| Easton | Cameron | January 13 | 17 | 12 |
| Plattsburg | Plattsburg | January 21 | 11 | 24 |
| Turney | Turney | February 4 | 20 | 12 |
| Plattsburg | Cameron | February 9 | 19 | 11 |
| Chillicothe | Chillicothe | February 11 | 20 | 26 |
| Turney | Cameron | February 25 | 25 | 5 |
| Chillicothe | Cameron | March 1 | 26 | 23 |
| | | | Total - - | 146 |
| Chillicothe | Trenton | March 6 | 13 | 16 |

"Boost and the world boosts with you;
 Knock, and you're on the shelf;
 For the world gets sick of the one who kicks
 And wishes he'd kick himself.

Boost for the schools advancement;
 Boost for the things sublime;
 For the chap that's found on the topmost round
 Is the booster every time."

TRACK RESUME'

| WITH | AT | DATE | RESULTS |
|----------------|------------|----------|-------------------|
| William Jewell | Liberty | April 22 | Cameron 3rd place |
| Maryville | Maryville | April 29 | Cameron winner |
| Clinton County | Plattsburg | May 4 | Cameron runner-up |
| Mo. Wesleyan | Cameron | May 6 | Cameron runner-up |
| Trenton | Trenton | | |
| Manhattan | Manhattan | | |

The Dragons were handicapped by bad weather during the early part of the season.

In the Jewell meet the team placed third. This was unexpected owing to the condition of the Dragons.

The next week the meet held by the Maryville State Teachers College proved to be one of the best. In this meet Cameron and Central of St. Joseph were tied when the relay began. The Medley relay team showed their mettle by winning this, and also of breaking the record. The Medley team was composed of Zaucker, Hunter, Brammer, and Auten.

The Dragons journeyed to Plattsburg on May 4, to compete in the Annual County meet. There were six teams entered, Lathrop won the meet by five points, Cameron taking second.

On May 6, Missouri Wesleyan's invitation meet was held at Cameron. This was the fastest meet that was held in Northwest Missouri. Several records were broken here, and some were threatened. Cameron lead the meet until the last event, which was the Javelin throw. If Cameron had placed second in this they would have won by one-fourth of a point. But they took third thereby giving them second, and runners-up cup.

A new system was used this year in regard to Captains. At each meet Coach Doolen appointed a captain for that meet. This proved to be a success, as it divided honors among the team.



ORVILLE OFFUTT Captain—440 and Relays Cameron, Mo.
 This 440 yard flash hardly ever failed to place well up among the firsts, and his pace will be hard to follow in years to come.

IRA KIMES Dashes and Relay Cameron, Mo.
 "Tud" could be a real track man with a little more effort. A steady, consistent man with a future before him.

HERBERT MUDERS Shot, Hurdles and Relays Cameron, Mo.
 "Pete" was a consistent performer in any of the many events he entered. Many laurels should fall to his credit in the future.

BEN AUSMAN Shot and Discus Cameron, Mo.
 "Bennie" can always be depended upon to start and finish with the best of them in any race he entered.

NOVA MILLER Shot and Discus Cameron, Mo.
 When "Levi" was tossing the weights, there were points being added to the Dragons' total score.



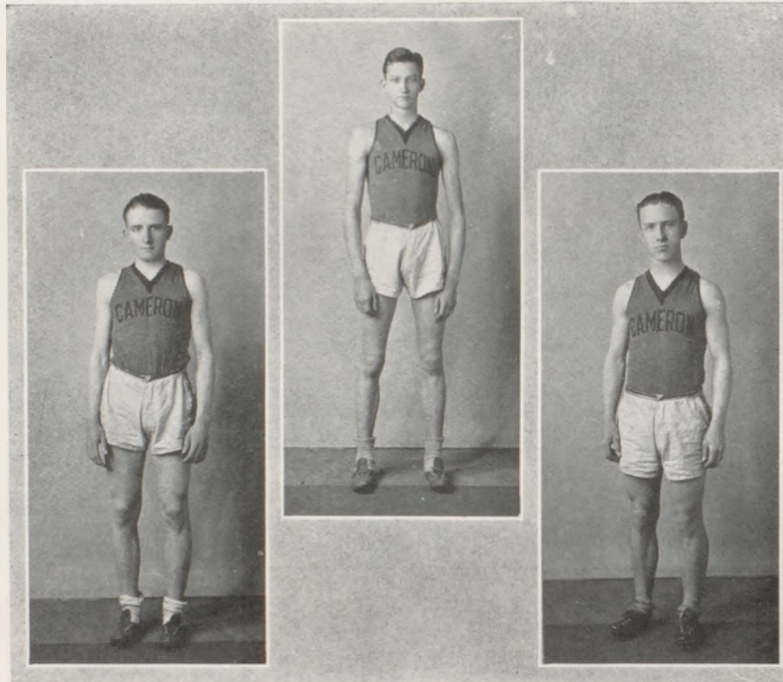
VICTOR DUSENBERRY Hurdles Cameron, Mo.
"Vic" worked hard and accomplished much. For one that could be thoroughly depended upon, he is not surpassed.

HOLWITH PARTIN Pole-vault, Relay Cam-ron, Mo.
"Holly" being a new man, and making his letter, should certainly garner many points in the future if he shows consistent effort.

WAYNE LEACH High Jump Cameron, Mo.
"Chick" was a man who placed in his event when the points were needed most.

EWING HUNTER Half-mile and Relays Cameron, Mo.
A careful, conscientious trainer who will improve with experience. He's not afraid of hard work.

RAYMOND MORON Mile Run Cameron, Mo.
"Pete" was of the hard working kind and always reached his goal. A steady, consistent worker.



MOSS AUTEN Half-mile, Relay Cameron, Mo.
A runner far better than the average. "Mossie" although in his first year, was a most consistent winner.

RAYMOND WARNER High Jump, Pole Vault Cameron, Mo.
With a little more experience he should set his mark far above his opponents in the future.

IVAN ZANCKER 440 and Relays Cameron, Mo.
"Skeeix" was one of the hardest workers on the squad and often showed a clean pair of heels to his opponents.



Track Squad of 1927

First Row: Warner, Hillebrand, Whitaker, Williams, Felson, Rolfe, Shaw, Parks,
Second Row: Kimes, Brummer, Pitman, Eaves, Garvin, Harter,
Third Row: Foster, L. Kanan, Bender, H. Kimes, R. Warner, King, McDaniels,
Auten, Hunter, Zancker, Coach Doolen.

This track squad picture above, had one of the best seasons in track that any Dragon team has had in previous years. They won honors in all the meets attended this year. Some of these fellows will be back next year to make another successful season.



"TROPHIES"

Organizations



MISS CLERC' HARDINGER

Teacher of Mathematics and Latin in the Cameron High School, died April 23, 1927, following a nervous breakdown. While she had been in failing health for some time it was not until two weeks before her death that she gave up her school work.

Miss Hardinger had been a teacher in our High School for three years and was greatly admired. She had been at all times an untiring worker in the interest of the school.

IN MEMORIUM

MR. W. W. SHIPLEY

Principal-elect, of the Cameron High School died in New York City, in July, 1926. He was attending Columbia University and after being stricken with typhoid fever, lived only a few days.

Mr. Shipley had been principal of our High School for one year, and had won the confidence and respect of all in the school and in the community. He was a conscientious worker with a sincere interest in every boy and girl in school.



Debate Team

Miss Cameron, Coach

Mr. Osborn, Coach

Frances Warner, Dessie Lee Sweat, Ira Kimes, Mary Elizabeth Biggerstaff

Billie Quigley

Margaret Maxwell

DEBATES

Senior High

| Opponent | Place | Supporting | Decision For |
|-------------------|-----------|-------------|--------------|
| Kidder | Cameron | Negative | Negative |
| Gallatin | Gallatin | Negative | Affirmative |
| Lock Springs | Kidder | Affirmative | Negative |
| Weston | Cameron | Negative | Negative |
| Excelsior Springs | Cameron | Affirmative | Affirmative |
| Martinsville | Cameron | Affirmative | Affirmative |
| Maryville | Maryville | Affirmative | Negative |

Junior High

| | | | |
|-------------|-------------|-------------|-------------|
| Trenton | Cameron | Affirmative | Affirmative |
| Chillicothe | Chillicothe | Affirmative | Negative |



Debate Club

First Row: Left to Right: Gregory, Urban, Humphrey, Buck, Marcum, Ballinger, VanGundy, Burten, Howard, B. Quigley

Second Row: Whitaker, Crowe, Simpson, Easter, Maxwell, David, Shannon, Shell.

Third Row: Osborn, R. Quigley, Biggerstaff, Urban, Cameron, Bryant, Williams, Packham, Kimes.

An unusual amount of interest was shown in debate work this season. Clubs were formed in both Senior and Junior high school, and teams to represent the school were chosen from both clubs. An affirmative team composed of Frances Warner and Dessie Lee Sweat, and a negative team composed of Mary Elizabeth Biggerstaff and Ira Kimes were selected from the Senior High Club. One team composed of Margaret Maxwell and Billy Quigley were selected from the Junior High Club.

Much of the success of debate this year was due to the splendid efforts of Mr. Osborn, coach, and of Miss Cameron, assitant coach, who spent many long and late hours in work with the clubs and the teams.



"C" Men's Club

First Row: Simpson, Auten, O. Kanan, Sheldon, Doolen, Carpenter, I. Kimes, Jones, Zancker

Back Row: Sloan, Packham, Farris, Partin, L. Kanan, Warner, Pittman, Shaw, Eaves.

The members of this club are those who have won a letter in one or more of the major sports. The organization is an honorary one, limiting its membership and seeing that no unauthorized person wears a "C".

OFFICERS

President Ira Kimes
Vice President Louis Kanan
Secretary-Treasurer Nathan Jones



Hi-Y

First Row: Orin Kanan, Kester Arnold, Mr. Doolen, Wardell Sheldon, Mr. Osborn, Holwith Partin, Ira Kimes, Nathan Jones, Ivan Zancker.

Second Row: Wesley Foster, Edgar Bryant, Roswell Farris, Louis Kanan, Paul Egbert, Raymond Warner, William Pittman, Charles Shaw.

The Hi-Y held their meetings at the noon hour part of the year and the rest of the year in the evening. Their meeting time was on every other Monday. They were always favored by a talk from one of the ministers or the business men of the town.

As an organization they put forth the main idea of clean speech, clean living, and clean sportsmanship.

OFFICERS

| | |
|--------------------|---------------------|
| Orin Kanan | President |
| Ivan Zancker | Vice President |
| Ewing Hunter | Secretary-Treasurer |



Board of Control

First Row: Ira Kimes, Orin Kanan, Charles Shaw, Supt. E. A. Elliott.
 Second Row: Irene Shirts, Hadley Kimes, Wardell Sheldon, Frances Urban,
 Paul McDaniels, Soph. Representative and Billie Quigley and Margaret
 Maxwell, Junior High Representatives

The Board of Control has as its purpose the handling of all moneys taken in and paid out by any school activity. On it are representatives of each of the classes. The Junior High School had its representatives who sit in the meetings with a vote. An itemized statement of all funds is published from time to time, thus informing the public of the disposition of all the money obtained.

| | |
|----------------------|-----------------|
| President | Ira Kimes |
| Vice President | Wardell Sheldon |
| Secretary | Charles Shaw |
| Treasurer | Orin Kanan |



The Mystic Staff

| | | | |
|-------------------------------------|--------------|--------------------------|----------------|
| Editor | Ira Kimes | Advertising Manager..... | Ruth Quigley |
| Faculty Advisor..... | Mr. Thomas | Assoc. Adv. Manager..... | Edgar Bryant |
| Associate Editor..... | Ivan Zancker | Snap-shot Editor..... | Marjorie Dyehe |
| Business Manager..... | Ewing Hunter | Snap-shot Editor | Delia Huey |
| Jr. Representative. Russell Packham | | | |

The MYSTIC



THE TANK STAFF

| | |
|---|--|
| Editor-in-Chief ----- Charles Shaw | Joke Editor ----- Mildred Nichols |
| Associate Editor ----- Frances Warner | Reporters—Mary E. Biggerstaff, Irene Shirts, |
| Business Managers—Nathan Jones and Paul Egbert. | Allene Brower, Glynn Garner, Donald King. |
| Sports Editors—Wesley Foster, Edgar Bryant | Exchange Editor ----- Frances Moore |
| | Faculty Advisor ----- Mrs. Pearl E. Warner |



High School Orchestra

WILSON THOMAS, Director

PERSONNEL

Solo Violins—Clair Luce, Maurice Cater.

1st Violins—Ross Kelsey, Dennis Dorsey, Blanche Crowe.

2d Violin—Elizabeth Shackelford, Glenn Peters, Gladys Cater.

1st Cornet—Carroll Gillis, Ray McCommas, Louise Shirts.

2d Cornet—Kermit Knoch, Ada Moore, Norman Neill

French Horn—Dougerty Bowen.

Baritone—Donald Gillis.

Trombone, Ewing Hunter, Lowell Folsom.

Saxophones — Richard Bowman, Donald Eaves, William Eaves, Pennington Thomas, John Hunter.

Clarinets—Billie Quigley, Everett Gillis.

Piano—Frances Eaves, Lois Bryan.

Bass—Wesley Foster, Olin Johnson.

Drums—James Russell.

The Orchestra spent the first semester under the direction of Prof. W. E. Tracy, but upon his removal from the city, Mr. Thomas took charge. Many special programs were given at the different churches, lodges, plays, and shows. The orchestra gave a special assembly program every two weeks at assembly and played the accompaniment to the operetta "Bulbul" as well as taking part in the different spring contests. Practice held in a class period each morning is largely responsible for the organization's excellent showing.



Girls Glee Club

First Row, Left to Right: Mr. Williams, Warner, Campbell, Porter, Cline, Shaw, Sloan, Quigley, Whitaker, Knoch, Sweat, Kelsey.

Second Row: Baldwin, Davis, Sloan, Biggerstaff, Brower, Huey, Cathcart, Carpender, Stade, Roberts.

Third Row: Wylie, Gale, Richards, Hord, Bell, Mallen, McCommas, Stinson.

Fourth Row: Folsom, Dunnington, McClure, Urban, Meek, Jones, Cousins, Kapke

The Senior High Girls Glee Club has been one of the outstanding activities for several years. The membership was open to all students interested in music, and was conducted as a class each Monday and Wednesday from 3:15 to 4:00 p. m. The club was under the direction of Mr. Joe M. Williams, and to him and his members, who gladly gave their time, talent and efforts, was success due. Miss Mildred Kelsey nicely accompanied the club.

Several splendid programs at Missouri Wesleyan College, debates, assemblies, and baccalaureate and commencement exercises have been given throughout the school year. The comic operetta "Bulbul" was given April 7, before an appreciative audience. From this organization a girls quartet was chosen:

| | |
|---------------------------------|----------------|
| Mildred Kelsey | First Soprano |
| Mary Elizabeth Biggerstaff..... | Second Soprano |
| Ruth Quigley | First Alto |
| Joy Carpender | Second Alto |
| Eileen Brower | Accompanist |



Boys Glee Club

First Row. Left to Right: Hildebrand, Buck, Crawford, Foster.

Second Row: Mullenix, Chapman, Kelsey, Acc. Mr. Williams, Carpender, W. Crawford, Sheldon.

Third Row: Foster, VanWinkle, Peck, Warner, Kanan, King, Shaw.

This glee club, under the direction of Mr. Williams, was an active part of the Music department. It was the desire of the club to further an appreciation of music and to encourage undeveloped talent. During the school year it presented programs on various occasions, such as at Churches, the College, Debates and Assemblies. The club met regularly as a class three times a week and was accompanied by Miss Mildred Kelsey.

From this club a male quartet was chosen which gave several entertaining programs at all the churches, Oak Grove School, Rotary Club, Father and Son Banquet, Missouri Wesleyan College, M. W. C. Guild, debates and assemblies. The members of the quartet were:

| | |
|------------------------|--------------|
| Hadley Crawford | First Tenor |
| Paul Carpender | Second Tenor |
| Wesley Foster | Baritone |
| Earl Mullenix | Bass |
| Wilford Crawford | Accompanist |

Junior High



The MYSTIC



Well now--



"The Boss."



Mrs. Warner.



Lady Moon.



Miss Cameron.



Gross.



Joe.



Mrs England.



Miss Cook.



IRENE MOON Cameron, Mo.
 Student Missouri Wesleyan College and Northwest Missouri State Teachers College; Cameron High School, 1927.
 English, 8th Grade Sponsor.

LEOLA RUTH TURNER Mexico, Mo.
 A. A. Hardin College, 1925; Cameron Junior High School 1926-27.
 Citizenship, History, 7th Grade Sponsor.

VIRGINIA KEMPER Cameron, Mo.
 A. A., Stephens College, 1923. A. B. in Philosophy; Missouri Wesleyan College, 1925, Greencastle, Mo., 1924, Cameron Junior High School, 1925-27
 Geography, Citizenship, Spelling, Elementary Science, Penmanship, 7th Grade Sponsor.

ESSIE BING Cameron, Mo.
 Student, Northwest Missouri State Teachers College and Missouri Wesleyan College. Extension work, Kirksville State Teachers College, Cameron Public Schools, 1918-25, Cameron Junior High School, 1926-27.
 Mathematics, 8th Grade Sponsor.

SENIOR HIGH TEACHERS HAVING CLASSES IN JUNIOR HIGH

| | | |
|--------------|------------------|--------------|
| Mrs. Warner | Mrs. Blankenship | Mrs. Seaton |
| Mr. Thomas | Mrs. Davis | Miss Pollard |
| Mr. Gross | Miss Hardinger | Mr. Doolen |
| Mr. Williams | Miss McMurtay | Miss Cook |

THIRD YEAR



FIRST ROW—Left to Right

| | |
|-----------------|--------------------|
| Franklin Elston | Carson Collins |
| Donald Gillis | Glenwood Gilliland |
| Donald Baker | |

SECOND ROW

| | |
|------------------|------------------|
| Reba Biggerstaff | Lucille Atkinson |
| Freda Mae Cline | Lois Davis |
| Ethelyn Ensign | Lorna Brockman |
| Myrtle Hancock | John Elmore |
| Dorothy Carter | |

THIRD ROW

| | |
|----------------|---------------|
| Ralph Hartford | Glenn Baker |
| Frank Howard | Phillip David |
| Jerry Brammer | John Baker |
| Ollie Harter | Glen Ed Haley |
| Oliver Brooks | |

THIRD YEAR



FIRST ROW—Left to Right

| | |
|------------------|----------------|
| James Scammahorn | Nellie Simpson |
| Frazier Staples | Billie Quigley |
| Lois Williams | Durl Rolfe |

SECOND ROW

| | |
|--------------------|-----------------|
| Dorothy Rosson | Oliver Whitaker |
| Laura Williamson | Martha Wamsley |
| Mary Alice Wingate | Vera Wise |
| Hazel Shackelford | Hazel Upchurch |

THIRD ROW

| | |
|-----------------|----------------|
| George Starks | Walter Russell |
| Lyle Whitaker | Paul Sloan |
| Donald Rutledge | Jewell Stren |
| Earl Upchurch | Lester Shell |

THIRD YEAR



FIRST ROW—Left to Right

Norman Neil
Glenn Peters
Harriet Runion

Dorothy Parks
Winnagene Kemper

SECOND ROW

Nellie Richards
Lula Mae Pittman
Ruth Holaday
Mary Meek

Florence Haley
Margaret Maxwell
Martha Hutton
Stella Norwood

THIRD ROW

Oliver Peters
Ralph Riley
Quincy Kemper
Donald Pittman
Clair Luce

Henry Jukes
Lawrence Phelps
C. A. O'Neal
Justin King
Joseph Keltner

SECOND YEAR



FIRST ROW—Left to Right

Maxine Miller
Inez Myers

Martha Marcum
James Morton

SECOND ROW

Virginia Jackson
Maurine Garmant
Lydia Flanders
Lillie Hughes
Nell Hendricks

Marian McClean
Virginia Gregory
Carolyn Howard
Mildred McCullough

THIRD ROW

Glenn Flanders
Jess Morehouse
Freddie Hancock
Glenn Johnson
Olin Johnson

Ross Kelsey
Walter Howard
Earl Johnson
Donald Livingston

SECOND YEAR



FIRST ROW—Left to Right

Lois Ballinger

Evelyn David

SECOND ROW

Edith Easter

Pauline Burgess

Mary Elizabeth Allen

Marian Buck

Alice Bryant

Florence Dorsey

Marlene Dalke

Helen Burten

THIRD ROW

Arthur Burkett

Amour Bonar

Audrey Brown

Junior DeShon

John Easter

William Eaves

X Charles Ellwood

Fred Clevenger

SECOND YEAR



FIRST ROW—Left to Right

| | |
|----------------|----------------|
| Donald Price | William Vaughn |
| James Williams | Vernon Price |

SECOND ROW

| | |
|-------------------|-------------------|
| Woodrow Rider | Helen Shackelford |
| Alice VanGundy | Ada Rice |
| Julia Mae Shannon | William Wells |
| Eloise Wiley | J. C. Woner |
| Ruth Crowe | |

THIRD ROW

| | |
|-----------------|-----------------|
| Benjamin Porter | Leslie Powers |
| Marvin Sackman | Victor Williams |
| Alvin Packham | Roy Wiley |
| Harold Leach | Erston Peters |

FIRST YEAR



FIRST ROW—Left to Right

| | |
|-----------------|---------------|
| Wayne Simmons | Carl Payne |
| Wendell Folsom | Donald Slaw |
| Bebe Brower | R. L. Stren × |
| Jimmie Cathcart | Robert Marcum |

SECOND ROW

| | |
|-----------------------|------------------|
| Elizabeth Shackelford | Grace Parks |
| Neatha Payne | Margaret Slaw |
| Edna Mae Urban | Mary Helen McGee |
| Leona Morris | Frances West |
| Gladys Wilson | Oleatha Woreg |

THIRD ROW

| | |
|-----------------|---------------------|
| Mauvern Hindman | Lawrence Flanders ✓ |
| Curtis Loeman | Billie Norwood |
| Merlin Moore | John Hunter |
| Earl Davis | Everett Gillis |
| Leslie Wood | James Ellis |

FIRST YEAR



FIRST ROW—Left to Right

Junetta Gaines
Dorothy Cater

Virginia Klepper
Elizabeth Flanders

SECOND ROW

Alice Howard
Hazel Fry
Marie Gall
Opal Camby
Christine Jones

Gladys Karriker
Vera Constance
Lois Wise
Marjorie Johnson
Margaret Humphrey

THIRD ROW

Eugene Trice
✓ Harold Ellwood
Levi Ensign
Floyd Flanders

Verl Kettenring
Ford Anderson
Ralph Camby
Clyde McVicker



First Row. Left to Right: Fry, Myers, Klepper, Ballinger, West, Crowe.
Second Row: Howard, Jackson, Allen, David, Mr. Williams, VanGundy,
Urban, Johnson, Shaw, Wise
Third Row: Gregory, Rice, Dorsey, Maxwell, Wingate, Marcum, Shackelford.
Fourth Row: Buck, Gall, Burgess, Wilson, Dalke, Parks, Wiley, Miller, Kemper

Under the direction of Mr. Williams and with Margaret Maxwell as accompanist the Junior High Girls Glee Club has spent a most profitable year. The club consisted of thirty-one voices and sang two-part music. The programs which the club gave consisted of the music of fine composers such as Planquette and Ira B. Wilson.

Part programs were given at debates, plays and assemblies; an entire program was given by the girls at Missouri Wesleyan College where they were enthusiastically received.

Although the girls are young and the voices undeveloped, the music has been very interesting and instructive, both for the girls and their listeners.



Features



THE UPS AND DOWNS OF LOVE

A pair in a hammock
Attempted to kiss
In less than a jiffy
They looked like this

A pair out canoeing
To change seats essayed;
These are the bubbles
o o o
o o o
That sinking they made.

A pair went joy-riding
And broke the speed law;
The auto turned turtle
And here's what they saw:

A pair went ballooning
While high overhead
The gas bag exploded
And here's what they said:
? ? ? ?
! ! ! !

For love is mighty;
Love is all
But when it comes
We all shall fall.

Gross: What is the surest way to keep milk from souring?

Red: Leave it in the cow.

Donald King: Did you ever take chloroform?

"Tud": No, what period does it come?

Ira: (at basketball game) That forward is going to be our best man next year.

Mary Elizabeth: Oh Tud, this is so sudden.

Helen K: I won't marry a man who can't look me straight in the eye.

Lawrence: Then wear 'em longer.

Marjorie: If you really love me say something soft and nice.

Roswell: Custard pie.

Who's Who In C. H. S.

FIRST CHOICE

Ruth Quigley
 Holwith Partin
 Hadley Kimes
 Marjorie Dyche
 Gretchen Flanders
 Marjorie Dyche
 Lionel Chapman
 Roswell Farriss
 Lionel Chapman
 Edgar Bryant
 and
 Martha Buckley
 Alvin Easter
 Kloris Hancock
 Ruth Quigley
 Richard Bowman
 Ira Kimes
 Marjorie Dyche
 Holwith Partin
 Lois Bryan
 Hadley Kimes
 Louise DeShon

Girl of Dreams
 Prince Charming
 King of Athletics
 Queen of Beauty
 Goofy Gertie
 Miss Pricilla
 Flunkie
 Drug Store
 Mouse Trap
 Rosie and her Beau
 Backward Ben
 Pessimist
 Optimist
 Blow Pipe
 Senior King
 Senior Queen
 Junior King
 Junior Queen
 Sophomore King
 Sophomore Queen

SECOND CHOICE

Marjorie Dyche
 Roswell Farriss
 Holwith Partin
 Helen Chenoweth
 Helen Kapke
 Elizabeth Biggerstaff
 Ivan Zancker
 Richard Bowman
 Emma Witt
 Nathan Jones
 and
 Ruth Quigley
 Lavon Althouse
 Kester Arnold
 Charles Shaw
 Lionel Chapman

| | | |
|------------------|---------------|-------|
| Billy Quigley | Ninth Grade | King |
| Margaret Maxwell | Ninth Grade | Queen |
| Junior DeShon | Eighth Grade | King |
| Marion McClean | Eighth Grade | Queen |
| John Hunter | Seventh Grade | King |
| Frances West | Seventh Grade | Queen |

The MYSTIC



Long John.



Soph's.



Captain.



"Butch."



New---?



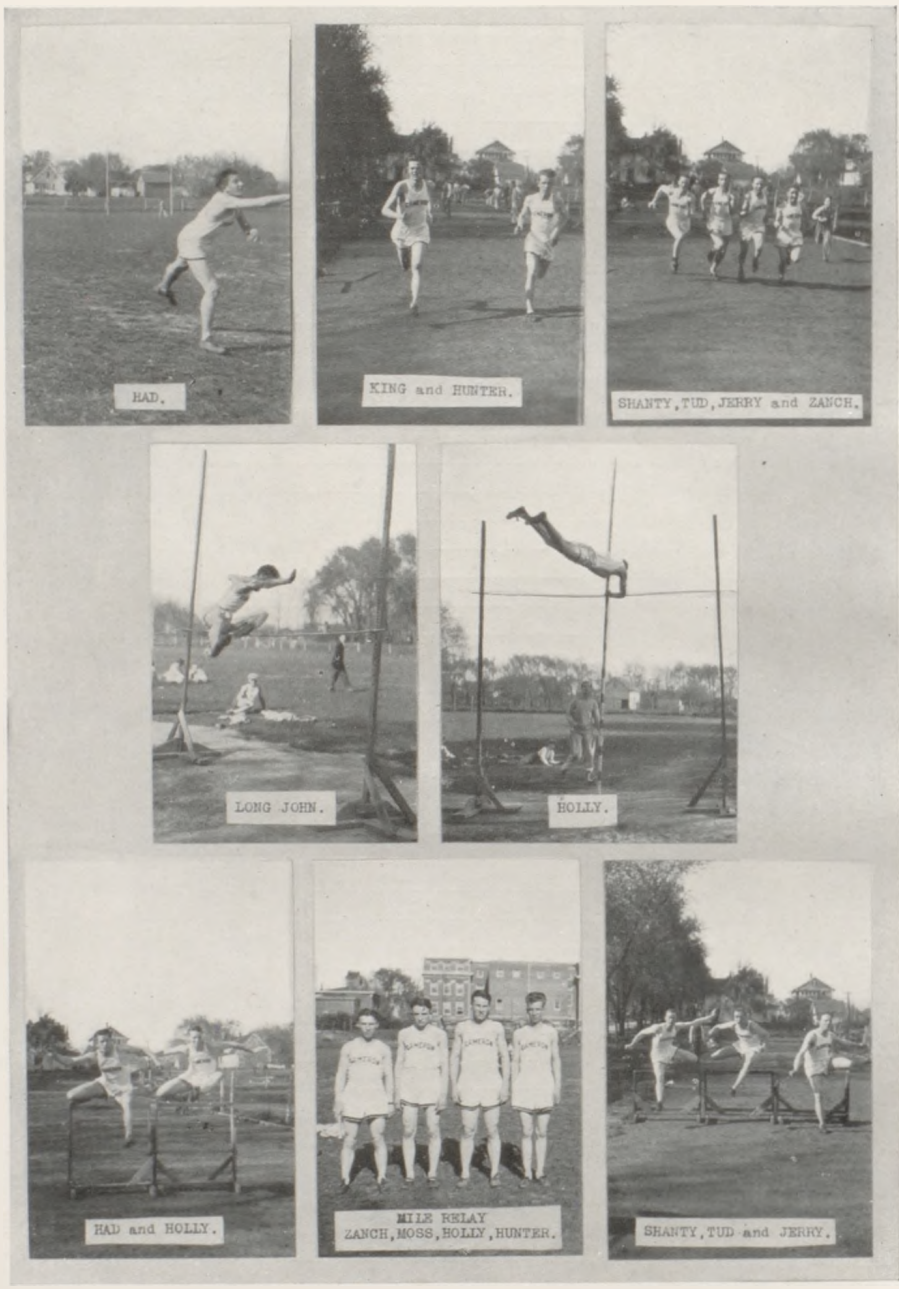
Laboring girls.



The Robbers.

Bug House Fables

| | |
|--------------------------|---------------------------|
| The football team..... | Losing a game |
| Ivan Zancker..... | Without curiosity |
| The basketball team..... | Winning 'em all |
| Harold Sloan | Worrying |
| Edgar Bryant | Without Martha |
| Richard Bowman..... | Dissatisfied with himself |
| Paul Egbert | Not loyal to the class |
| Paul McDaniels | Not blushing |
| Paul Graham | C. H. S. Shiek |
| Fat Simpson | Mama's boy |
| Nathan Jones | Woman hater |
| Russell Packham | Without friends |
| Miss England | With Bobbed hair |
| Glym Garner | Boisterous |
| Frances Urban | Having a date every night |
| Era Sloan | Selfish |
| Merlin Strong | Passing |
| Edna Easter | Nonsense on the brain |
| Wesley Foster | Forgetting a date |
| Holwith Partin | Taking books home |
| LaVange Dunnington | Man hater |
| Vincent Lawler | Falling for someone |
| Orin Kanan | Kissing a girl |
| Lucille Atkinson | Feeling responsibility |
| Wilson Thomas | Being stuck up |
| The Mystic Staff | Working at night |
| Mrs. Davis | Aesthetic Dancing |
| The Tank Staff | Working at all |
| Frances Moore | Flunking Chemistry |
| Delia Huey | Without "him" |
| Ira Kimes | Laughing silently |
| Helen Chenoweth | Never blushing |
| Lewis Kanan | Being a sissy |
| Lois Bryan | Going out for girls track |
| Hadley Kimes | Being a consumptive |
| Hadley Crawford | Out of tune |
| Charles Penny | Studying |
| Miss Moon | Not being affected |
| Ivan Zancker | A bachelor |
| Mrs. Warner | Doing a Charleston |
| Glenn Tracy | Talking for five minutes |
| Mr. Osborn | Smoking a pipe |
| Floy McCommas | Still for half an hour |
| Miss Bing | Bossing "him" |
| Ruth Quigley | Found Idle |



The MYSTIC



A little rouge, a little curl
A powder box—a pretty girl,
A bit of ruin—away it goes,
A homely girl with freckled nose!

Miss Cook: Did our speaker electrify the assembly?

Dorothy: No, first he gassed it and then he shocked it.

Little words of dumbness
Said in class each day,
Makes the flunking student,
To the office stray.

To those who've heard these jokes
And we haven't done our best,
We'll leave this space just underneath
Where they can write the rest.

Dearest One: Darling girl of my heart;
I would swim the deepest river to you;
I would brave the worst dangers for your sake
I would face death in any storm, just for you.

Your true love,
Roswell.

P. S.—I'll be over tonight if it doesn't rain.

Dick Bowman: You Seniors aren't what you used to be.

Paul: How's that?

Dick: You were Juniors last year, weren't you?

Lives of Seniors all remind us
We can make our lives sublime
And by asking silly questions
Take up the recitation time.

"My face is my fortune," said she,
"And so is mine," quoth he.
When parting time drew night,
With the lamp turned low,
As he rose to go,
Did they talk about the weather?
Not a single word,
Not a sound was heard,
As they put their wealth together.

Francis: What makes Orin Kanan's hair so wavy?

Henrietta: Water on the brain I guess.

Mr. Elliott: My, this soup is good!

Mr. Osborn: Yes, it sounds good.

Found on a Freshman's enrollment card—"Name of parent or guardian"—Papa.

Wilfred: Alice Stade has the worst habit.

James R: What's that?

Wilfred: She turns around and looks back every time we pass on the street.

James R: How do you know she does?



Mr. Thomas: (In Physics class)
Byrne, what is velocity?

Byrne: Velocity is what a fellow
lets go a bee with.

"Tud": What is a hypocrite?

Jonesie: A boy who goes into the
sociology class test with a smile on
his face.

Catherine (At Hook's): I want a
comb without pyorrhoea.

Wayne: What do you mean?

Catherine: One whose teeth won't
fall out.

"Cracker": I like a girl who can
take a joke.

Ruth: Then you stand a good chance
of being accepted.

Mr. Osborn: Can anyone give me
the name of the largest diamond?

Dick Arnold: The Ace.

Thomas: (In ag' class) Paul, what
plants flourish in excessive heat?

Paul: Ice plants.

Mr. Thomas: Donald this is the
third time you have looked at Ralph's
paper.

Donald: I know it. He doesn't
write very plain.

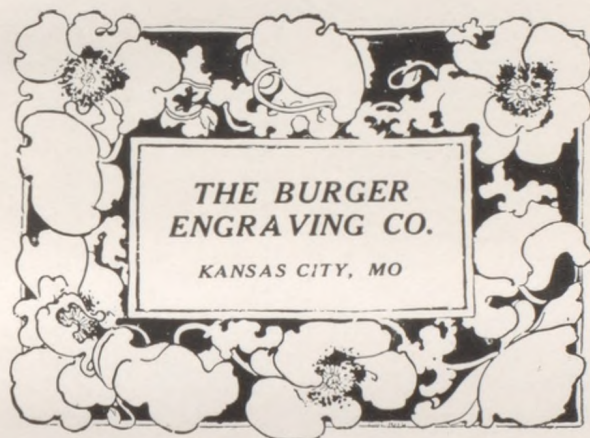
Mr. Gross: Leland, name four dif-
ferent kinds of sheep.

Leland: Black sheep, white sheep,
Mary's little lam' and the hydraulic
ram.

The Staff may scrape and scramble,
Till their finger tips are sore,
But some wise one is sure to say
"I've heard that joke before."

Ivan: (To Delia) You look sweet
enough to kiss.

Delia: Aw—go on!



The ability sincerity and genuine service of the Burger Organization, make pleasant the work of building the Annual.



Society Brand Clothes

The best dressed High School students
put their definite O. K. on Society Brand
Clothes.

C. N. STUCKER & CO.

In another year how different that boy or girl of yours will look--but photographs of the children never grow up.

Don't fail to have them made at the—

A. S. Brown Studio

105 E. 3rd St., Cameron, Mo

Ocean to Ocean Cafe

Best Place in Town to Eat

Special Dinner and Supper
35 Cents

Short Orders at All Times

Famous For Our
Chili and Sandwiches

FLOWERS

Yes, We Have Them For All
Occasions. Home Grown, Cut
Every Day. Students Wel-
come at the Greenhouse.

RUSSELL E. CATER

The Florist

Phone 33

Wise Brothers

CASH GROCERY

Quality and Service

Phone 281

Mallory Hats

Ide Shirts and Collars

Holeproof Hosiery

For Men and Women

Kuppenheimer Clothes

Bradley Sweaters

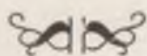
For Men and Women

Dillener Clothing Co.

Plain Price Merc. Co.

Phone 58

GENERAL MERCHANDISE



PHOENIX SILK HOSE

For Long Mileage

Success does not come in a day. Consistency is a jewel.

We have a book already made out for you. Make it your pass to success instead of a "Let-it-pass" book.

THE FARMERS BANK of CAMERON

Eyes Examined Glasses Fitted



C. W. SHERMAN, Optometrist

W. H. S. McGLUMPHY

ABSTRACTS OF TITLE

Insurance—Notary

ROOM 22

Trust Company Bldg.

Page One Hundred Seven

The Friendship of the Student
Body is One of Our Most
Valuable Assets.

We trust we shall retain it.

The
Cameron Progress

TOM W. KLEPPER
CORONA TYPEWRITERS

Walter W. Hammer

Ford
THE UNIVERSAL CAR

Authorized Sales and Service

FORD FORDSON LINCOLN

Cameron, Missouri

Hibbs Dry Goods Co.

QUALITY :: VALUE :: VARIETY

CAMERON'S BEST STORE

EXCLUSIVE STYLES IN LADIES'

READY-TO-WEAR

—at—

Cameron Style Shop

Compliments of

HILLYARD CHEMICAL COMPANY

St. Joseph, Missouri

The home of Shine-all, Pine-o-side, Trackless Floor Dressing,
Cocoanut Liquid Soap, Toilet Paper and Paper Towels

DR. L. F. GRAHAM

DENTIST

Ground floor, Citizens office Bldg.

Phones: Office 155. Res. 585

Cameron, Mo.

R. E. CATER

FLOWERS

We have them for all occasions.
Home grown, cut every day.
Students welcome.

RUSSELL E. CATER

The Florist
Phone 33

Dr. Maxwell

CHIROPRACTOR

Office Phone 445

Residence Phone 820

Cameron : : Mo.

Your Telephone

A Time Saver and Money Maker

Use of the telephone has become so commonplace that most people lose sight of its real value, but the value is there just the same. Your Telephone is one of your best partners in business, a most efficient servant in the home.

**THE CAMERON TELEPHONE
COMPANY**

Cameron, Mo.

Owen & Murray

THE REXALL STORE

Drugs

Books

Kodaks

Wall Paper

Shades

and Paints

New Soda Fountain

Your Inspection Requested

119 E. Third St.

Electric Shoe Shop

Let Us

REBUILD YOUR SHOES

First Class Workmanship

Modern Equipment

Shine Parlor For

Ladies and Gents

R. L. MACRAE, Prop.

Cameron, Mo.

C. B. HENDERSON

Automobile Service

Parts and Accessories

Telephone 127

Cameron, Mo. 3rd & Walnut

Compliments of

Edelen Pharmacy

SERVICE PLUS QUALITY

TEA and COFFEE

Chase & Sanborn's

FLOUR

Queen of the Pantry

CANNED GOODS

Lee

WILLIAMS GROCERY AND MEAT MARKET

M. R. WILLIAMS, Prop.

"Best Things to Eat"

:

:

Phone 520

Fresh Vegetables and Fruits

Meats of all kinds—Groceries

CITY GROCERY AND MEAT MARKET

HINDERKS BROS. Props.

:

:

Phone 49

The FIRST NATIONAL BANK

Under direct supervision of the U. S. Government and
the Great Federal Reserve System.

Your patronage solicited with this system of regula-
tion as your security.

H. M. HUMPEREY, M. D.

Surgeon and Homeopathic
Physician

Office in

Cameron Trust Co. Bldg.

Phones: Office 54. Home 411

DENNY'S BARBER SHOP

First Class Barber Work
Hot or Cold Bath

Your Patronage Appreciated

W. H. DENNY, Prop.

First Door South of Hook's

YOU SHOULD USE OUR ICE



FIRST—Because it is manufactured by
the Cameron Artificial Ice Co.
from pure distilled water.

SECOND—Because we give you prompt
Service.

THIRD—Because our drivers give you
courteous treatment.

THOS. FIDDICK

Phone 77

Feed, Fuel, Ice

Page One Hundred Eleven

J. E. NICHOLS

**FEED AND FUEL AND ALL KINDS OF
HIGH GRADE COAL**

Poultry Feed, including Rolled Oats, Steel-Cut Oats,
Chick Feed, Chops, Southard's Chick Feeds and Hen Scratch,
Kaffir Corn, Blackford's Chick Mash and Calf Meal.

Sewer Pipe Hay Corn Oats

25—PHONE—25

Cameron Junction LUNCH ROOM

—
We Excel In

GOOD THINGS TO EAT

Give Us a Trail

—
W. E. QUIGLEY, Prop.

FORM A BANKING CONNEC- TION NOW

Entering life without a bank-
ing connection is like entering a
class room unprepared. You may
get by in your recitation but the
chances are ten to one that you
will rate an F.

Select a strong bank early in
life, establish your credit there,
and when once established, cher-
ish it as your most valuable asset.

This bank with it's unquestio-
ned strength and ample resources
can help you in the big battle of
life as it has helped many others.

THE CAMERON TRUST CO.

Surplus \$100,000.00

Capital \$100,000.00



TO
GRADUATES OF
1927

We extend our congratulations; and to your friends, who would remember you with some little token of remembrance we offer the best there is to be found in Watches, Diamonds, Jewelry, Silverware and Leather Goods.

F. H. AMES

Jewelry, Optical and Music Store

We give and redeem Eagle Stamps

If You Want More Miles at Low Cost

BUY WALK-OVER SHOES

R. S BROWN SHOE COMPANY

Inter-woven Hose For Men

TOYS, NOTIONS, AND

QUEENSWARE

Telephone 57

RUSSELL VARIETY STORE

May you be as successful in

The Future

As You Have Been Beautiful

Are the Sentiments of

The Blue Bird Beauty Shop

L. L. CLEVELAND

—for—

Clean, Wholesome

Grade A Milk

From Tested Cows

Phone 1756 Cameron, Mo.

Send it to

BYERS—THE CLEANER

“Where It's Done Right”

Phone 23. Old Postoffice Bldg.

Cameron, Mo.

S. H. Hook & Co.

Drugs, Books, Wall Paper, Win-
dow Shades, Paints and
Varnishes

School Supplies and Sporting

Goods.

Vietrolas and Records

CORNER DRUG STORE

J. B. RUSSELL

LUMBER LIME CEMENT

All Kinds of Building Material

Where Service and Quality Meet

Established 1894

Long-Bell Forest Products

L. A. WILSON, M. D.

PHYSICIAN AND SURGEON

Cameron, Missouri

Howser Bldg : : Phone 737

Miss Mary Munson

MILLINERY

—and—

ART GOODS

103 West Third Street

FRIGIDAIRE

ELECTRIC REFRIGERATION

For Home and Commercial Uses

JACK RIGGS

Sales and Service

Cameron, Mo.

Phone 609

THE CAMERON SUN

ALL THE NEWS

Job Printing Too

ROBERT E. COLEBERD

ATTORNEY AT LAW

Trust Company Bldg.

Cameron, Mo.

The Richelieu Store

Most of the Best For the Least

Good Groceries

Fresh Fruits and Vegetables

Phone No. 1

EDDY GROCERY

CAMERON CO-OPERATIVE ELEVATOR ASSOCIATION

Cash Dealers in the Celebrated
Purina Feeds

Coal, Flour, Oil, Sewer Pipe and
All Farm Products

TWO STORES

Phone 675

Annex 311

Page One Hundred Fifteen

5c—HAMBURGERS—5c

Home Made Pies

Good Coffee

Cold Drinks

HAMBURGER INN

Patronize Home Industry

“EAT TAYLOR'S BREAD”

None Better

Only One Bread—That's

TAYLOR'S

Telephone 193



The School that places Students *“No Position,
No Pay”*

CHILLICOTHE BUSINESS COLLEGE
CHILLICOTHE, MO.



HIGH SCHOOL



OUR FIVE BIG BUILDINGS

Millard's
**Tire and Battery
SHOP**

Goodyear and General Tires

Exide Batteries

Vulcanizing and Battery Service

Phone 114

Page One Hundred Sixteen

RED STAR OIL STOVES
HARDWARE — IMPLEMENTS

O. E. CONNELL

HARDWARE STORE

NEFFS BAKERY

—and—

FOUNTAIN

We Deliver Ice Cream and Cake

LAIN DRUG CO.

—
Stands For

QUALITY— PRICE— SERVICE

Either in Our Store

Or at Your Door

—
We Are Always Glad to

Serve You.

Call 89—Any Time

Frank B. Klepper

ATTORNEY AT LAW

Office in Farmers' Bank Bldg.

—
C. EVERETT FORD

—For—

HARDWARE, CUTLERY, ETC.

Our Aim is Good Goods

At Low Prices

—
Cameron, Mo.

Bring Your Poultry, Eggs and
Cream to

FARMERS PRODUCE CO.

North Walnut Street

Highest Market Prices

T. M. O'NEAL, Prop.

DR. O. A. SMITH

DENTIST

Cameron, Mo.

100% Government Inspected

Ladies' Rest Room

HIGHWAY CAFE

Cameron, Missouri

RESERVE THE "BLUE ROOM" FOR YOUR PARTIES

SPECIAL CHICKEN DINNER ON SUNDAY

Steaks a Specialty

Geo. M. Zancker, Prop.

Phone 434

Page One Hundred Seventeen

We Carry

at all times a complete line of Shaeffer's life time fountain pens, pencils, inks, and accessories.

Let your next fountain pen be a Shaeffer from—

Leibrandt Jewelry Store

Cameron, Mo.

AUTO DRIVE INN

Storage—Gas—Oil

Cars Washed

Taxi and Transfer

Phone 662 Third and Main

H. F. WILLIAMS, Prop.

WALTER E. TRICE

Attorney and Counselor

204-205 Farmers Bank Building

Cameron, Mo.

Missouri Wesleyan College

A HIGH GRADE COLLEGE RIGHT AT HOME

A college education is within the reach of the young people of Cameron and Vicinity

Our Graduates Make Good at the Universities, in the Professions and in Business.

Our Credits Are Accepted in This and Other States

Come to Missouri Wesleyan

The News-Observer

Established in 1906

Published in the interest of
Cameron.

Specially equipped for fine
Job Printing.

PLACE BROS.

GROCERIES AND MEATS

Phone 291 Cameron, Mo.

Meet Me

—at—

BILLY'S PLACE

LET'S LUNCH

115 W. 3rd St. Cameron, Mo.

When You are in Need of

LUMBER LIME CEMENT COAL

Or Any Kind of Building Material

Call 195

Cousins Lumber Co.

Cameron, Missouri

Page One Hundred Nineteen

FRANK L. PULLEY

Attorney-at-Law

Practices in State and Federal
Courts

Cameron, Mo.

LISSEN TO THISSEN

"Bill made a fortune out of his oil
well."

"I didn't know he struck oil."

"He didn't but he pulled up the
well and sold it for post holes."—Ex.

J. W. POLAND

FURNITURE, RUGS

AND LINOLEUM

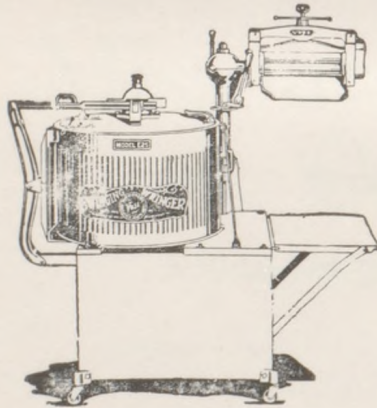
Y. M. C. A. Building

SENATE THEATRE

House of Good Pictures

Always Give us a Visit

THANK YOU



**Voss Floto-Plane
WASHER**

Electric

**Lowest Price Copper Tub Wash-
er on the Market**

**For Less Than \$100—to be Exact
\$94.00**

ASK FOR DEMONSTRATION OR SEE THEM AT OUR STORE

W. H. KIMES

Cameron, Missouri

Hardware & Furniture

Page One Hundred Twenty

Royal Theatre

THE MOST OF BEST FOR LEAST

We always like to see all C. H. S.
Boys and Girls

TAKE THAT!

The He-Man (loudly): And mind this—no woman ever made a fool of me!

His Demure Wife: Who did then?
—Answers. London.

“I have always maintained,” declared Charles, “that no two people on earth think alike.”

“You’ll change your mind,” said his fiancée, “when you look over our wedding presents.”—Epworth Herald.

His: “What do you mean by telling Dot I’m a fool?”

Harry: “I’m sorry—I didn’t know it was a secret.”—Bell Hop.

Coach: (Eating chicken) I wish chickens were built like centipedes.

Zancker: Gosh! I don’t. I’m going to marry one some day and think of silk stockings at two dollars a pair

It is war time. Seeing a khaki-clad figure passing, the private called out:

“Hey, Buddie, gimme a light.”

The other obligingly held out a burning match.

The doughboy, looking up to thank his “buddie,” discovered to his amazement the star of a brigadier.

“I beg your pardon, sir,” he said: “I didn’t mean any disrespect. I didn’t notice you was a general.”

“That’s all right, Buddie,” said the General—who apparently was a regular guy—but you should thank God I wasn’t a second lieutenant.”

BUDDIES

BUDDIES

F I N I S





