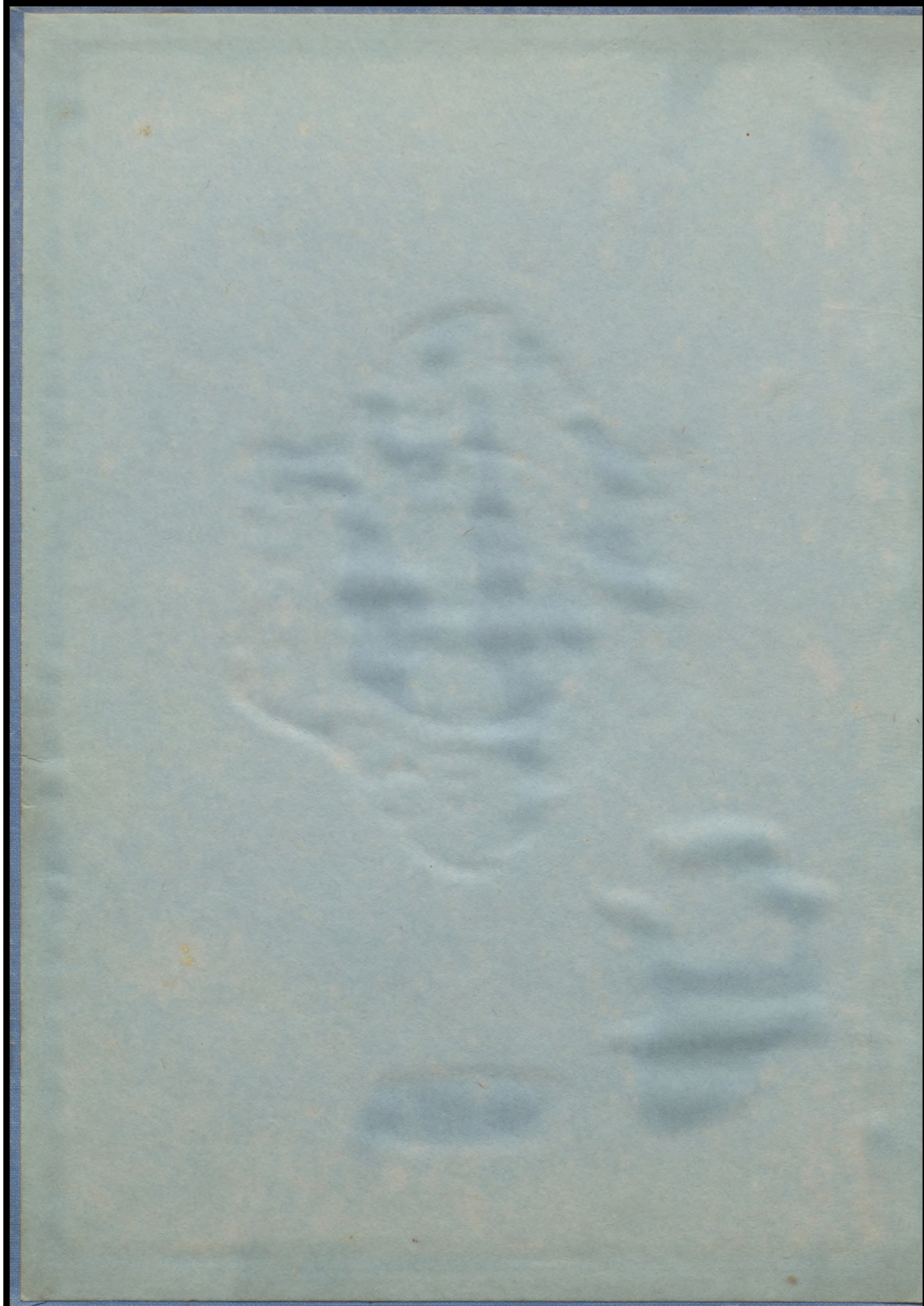
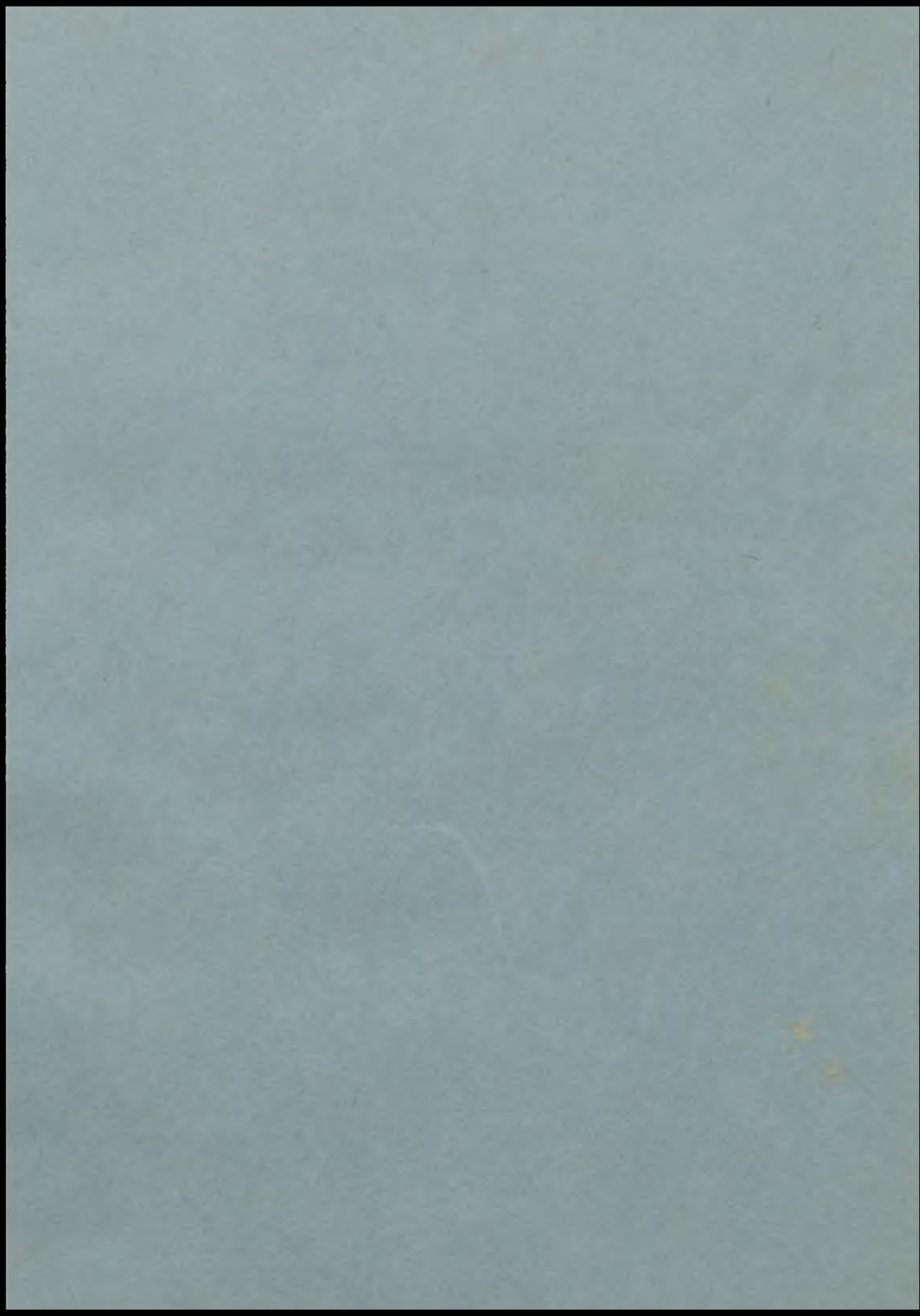
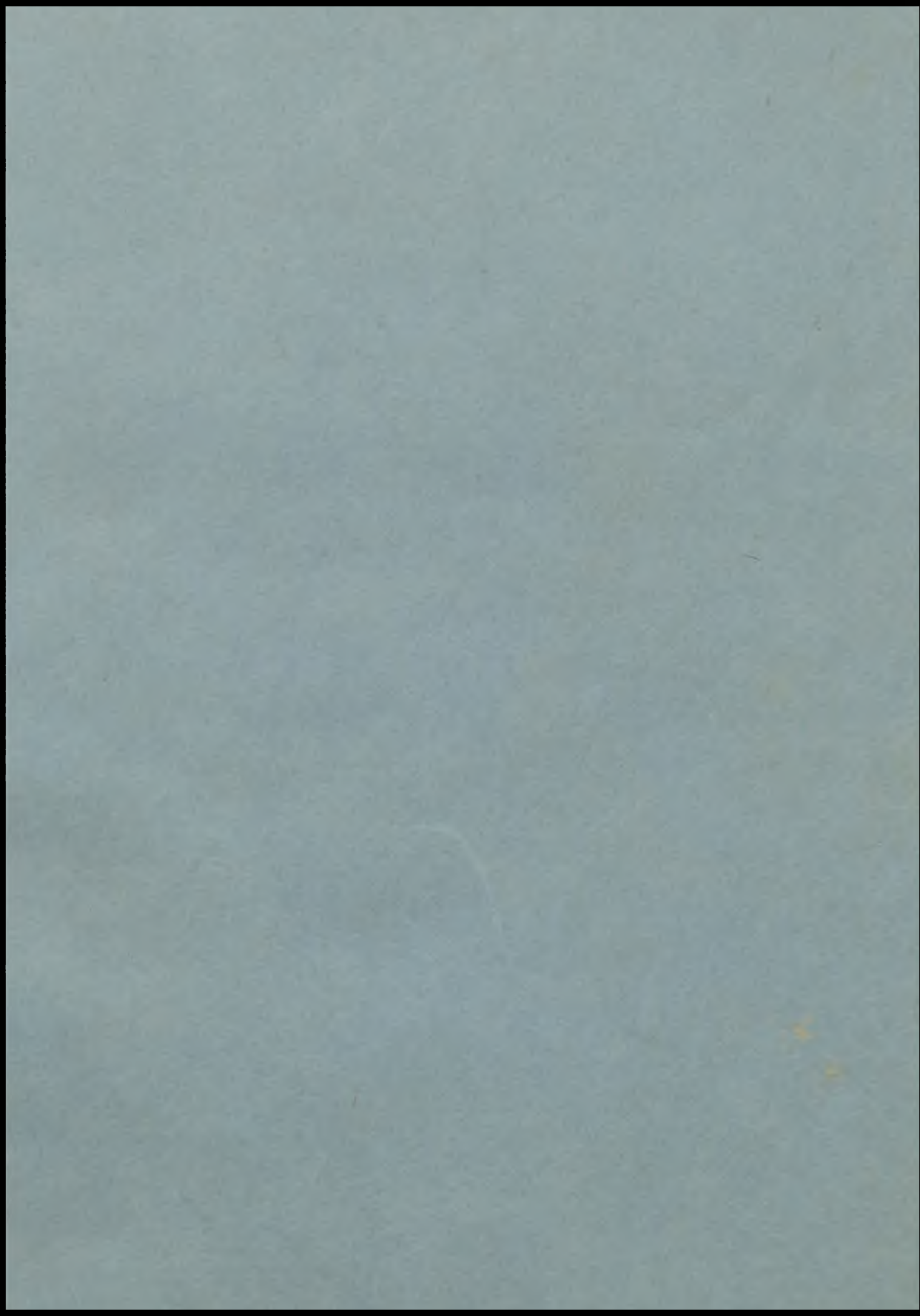


*The
Mystic*

1928







THE MYSTIC

The Seniors of '28

submit to you
this volume
of

The
Mystic

Cameron High
School

Cameron, Missouri



THE MYSTIC

FOREWORD

If, in the years that follow graduation, this book serves to recall pleasant memories of days spent in C. H. S., of life-long friendships formed, of classmates and instructors, so that the memory of the school may live on through the years to come, then will our purpose have been accomplished in this—

The 1928 "Mystic"



The Staff

- Editor-In-Chief.....Russell Packham
- Associate Editor.....Dick Arnold
- Business Manager.....Edgar Bryant
- Advertising Managers.....{ Louise Shirts
Virginia Holland
- Sports Editor.....Russell Williams
- Literary Editors.....{ Aileene Brower
Louise Berten
- Junior Representative.....Louise DeShon
- Snap-Shot Editor.....Adah Moore
- Faculty Advisor.....Mr. Thomas

THE MYSTIC

DEDICATION

To Arthur H. Doolen, we the staff of 1928 affectionately dedicate this year book. "Art" has been with us two years as coach of athletics, and in that capacity has served both ably and faithfully. His personality has placed him in the hearts of both faculty and student body, and his good coaching has placed our school well at the top athletically.

He has set a standard of sportsmanship of which C. H. S. is justly proud - To him we dedicate this edition of the Mystic.



THE MYSTIC



ARTHUR H. DOOLEN





THE HOME PORT

Thou, too, sail on, O Ship of State!
Sail on, O Union, Strong and great!
Humanity with all its fears,
With all its hopes of future years,
Is hanging breathless on thy fate!
We know what Master laid thy keel,
What Workmen wrought thy ribs of steel,
Who made each mast, and sail, and rope,
What anvils rang, what hammers beat,
In what a forge and what a heat
Were shaped the anchors of thy hope!
Fear not each sudden sound and shock,
'Tis of the wave and not the rock;
'Tis but the flapping of the sail,
And not a rent made by the gale!
In spite of rock and tempest's roar,
In spite of false lights on the shore,
Sail on, nor fear to breast the sea!
Our hearts, our hopes, are all with thee,
Our hearts, our hopes, our prayers, our tears,
Our faith triumphant o'er our fears,
Are all with thee;—are all with thee!



THE HAVEN OF HAPPINESS

"Like unto ships far off at sea,
Outward or homeward bound, are we
Before, behind, and all around,
Floats and swings the horizon's bound,
Seems at its distant rim to rise
And climb the crystal wall of the skies,
And then again to turn and sink,
As if we could slide from its outer brink.
Ah! it is not the sea,
It is not the sea that sinks and shelves,
But ourselves
That rock and rise
With endless and uneasy motion,
Now touching the very skies,
Now sinking into the depths of ocean.
Ah! if our souls but poise and swing
Like the compass in its zrazen ring,
Ever level and ever true
To the toil and the task we have to do,
We shall sail securely, and safely reach
The Fortunate Isles, on whose shining beach
The sights we see, and the sounds we hear,
Will be those of joy and not of fear!"

THE MYSTIC

ORDER OF BOOKS

BOOK ONE . . . PILOTS

BOOK TWO . SHIPMATES

BOOK THREE . . SPORTS

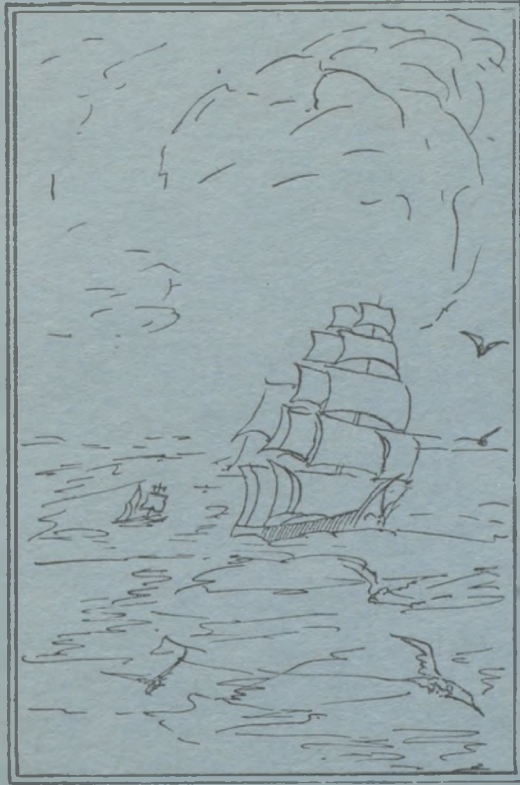
BOOK FOUR - WHITE CAPS

BOOK FIVE - APPRENTICES

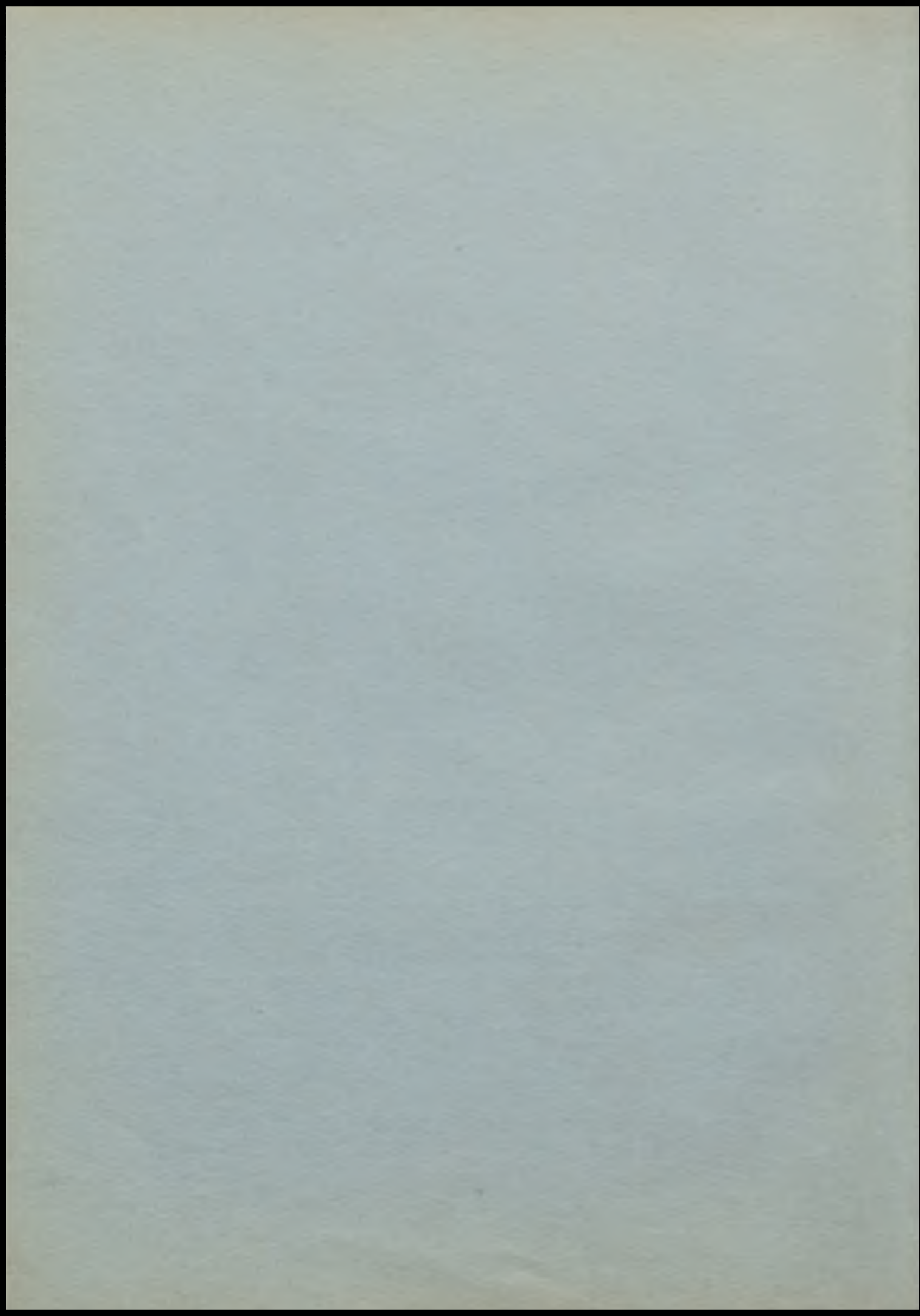
BOOK SIX . . .

. . THE ROLLING DEEP

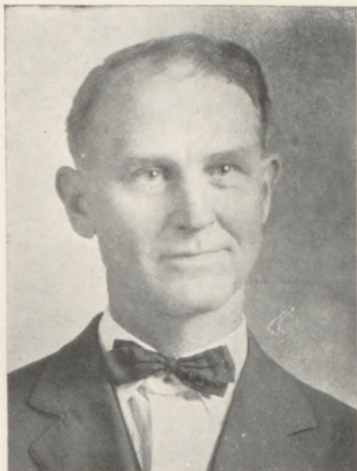




PILOTS



The MYSTIC



LYLE C. ALLEN
President



J. HARRY HULSIZER
Secretary



CLARENCE STAPLES



W. H. KIMES



RALEIGH BROWN



FRANK PULLEY



E. A. ELLIOTT, Superintendent

Central State Teachers College, Warrensburg, Mo.; A. B., University of Kansas; Graduate Student, University of Kansas; Teacher of Rural Schools, Johnson County, Mo., 1900-1912; Superintendent Centerview, Mo., 1912-'13; Principal Lee's Summit, Mo., 1913-'15; Superintendent Waverly, Kanass, 1915-'18; Superintendent Fredonia, Kansas, 1918-'25; Superintendent Cameron, Mo., 1925-'28.

Sociology, Economics.



PAUL W. OSBORN, Principal
Junior and Senior High Schools

B. S. in Education, Central Missouri State Teacher's College, Warrensburg, Mo., 1924; Superintendent of Schools, Elm, Mo., 1916-'18; Superintendent of Schools, LaTour, Mo., 1921-'23; Superintendent of Schools, Wellington, Mo., 1924-'25; Principal Cameron High Schools, 1926-'28.

Geometry, Debate, Civics.



CARL R. GROSS

Cameron, Mo.

B. S. in Agriculture, University of Missouri 1920; Cameron High School 1921-22-23-24-25-26-27-28.

Vocational Agriculture.

Sponsor, Senior Class and Nature Study Club.

MRS. PEARL E. WARNER Cameron, Mo.

A. B., Missouri Wesleyan College; Student Northwest Missouri State Teacher College; Cameron High School, 1922-23-24-25-26-27-28.

Teacher Training Reviews, Methods, Psychology.

Sponsor, Junior Class and Vocational Guidance Club.



WILSON THOMAS

Cameron, Missouri

A. B. in Science, Missouri Wesleyan College, 1920; Graduate Student State University of Iowa, 1925-26-27. Cameron High School, 1921-22-23-24-25-26-27-28.

Chemistry, Physics, General Science, General Agriculture, Director of Orchestras.

Faculty Advisor, The Mystic; Sponsor, Chemistry Club.

MARGARET CAMERON Hannibal, Mo.

B. S. in Education, University of Missouri, 1921; Cameron High School 1922-'25; Little Rock, Arkansas, 1926; C. H. S., 1927-'28.

English.

Sponsor Senior class, Self Improvement Club, and Asst. Debate Coach.



ARTHUR H. DOOLEN Manhattan, Kas.

B. S. in Agriculture, Kansas State Agriculture College, 1926; Coaching School Kansas Aggies, 1925-'26; Cameron High School 1927-'28.

Vocational Agriculture, Physical Education.

Coach of Football, Basketball and Track.

ROBERTA COOK Maryville, Mo.

B. S. in Education, Northwest Missouri State Teacher's College; Cameron High School, 1927-'28.

Physical Education.

Coach of girl's Basketball and Track, and Sponsor "M" Club.





BELLE POLLARD Columbia, Mo.

B. S. in Education. Kirksville State Teacher's College, 1926; Cameron High School 1927-'28.

Clothing, Domestic Art.

Sponsor Junior class. Self Improvement Club.

JOE M. WILLIAMS Cameron, Mo.

A. B. in Language, Missouri Wesleyan College, 1926; Diploma in Voice from Missouri Wesleyan College Conservatory of Music; Cameron High School 1927-'28.

English, Public Speaking, Music.

Sponsor Music Club, Choruses, and Quartets.



VIRGINIA KEMPER Cameron, Mo.

A. A. Stephens College, 1923; A. B. in Philosophy, Missouri Wesleyan College, 1925; Greencastle, Mo., 1924; Cameron High School, 1925-'28.

History.

Sponsor 8th grade, Home Room, and Sponsor Sophomore class.

MIRIAM PEARL ADAMS Laclede, Mo.

A. B. University of Missouri; B. S. in Education from N. E. Mo., State Teacher's College; Instructor, Clarence, Missouri 1907-'18; Eolia, Missouri 1919-'21; Browning, Missouri 1921-'25; Forker, Missouri 1925-'27; Cameron, Missouri '28.

Latin, Mathematics, Comm. Geography, Sponsor 8th grade, and 9th grade home room.



MARY E. HANSELL Maysville, Mo.

B. S. in Education, N. W. Missouri State Teacher's College 1927; Cameron High School 1928.

Clothing, Allied Arts.

LOUISE C. WILSON Columbus, Kas.

Special Life in Commerce, K. S. T. C., Pittsburg, Kansas 1923.
Pitcher, Oklahoma 1923-'24; Galena, Kas., 1925; Abilene, Kansas 1925-'27; Cameron High School 1928.

Bookkeeping, Shorthand, Typewriting.

Sponsor Sophomore Class, and Steno-Static Club.





MARY A. KLEPPER Cameron, Mo.

B. S. in Education, Central Mo., State
Teacher's College. Instructor, Tipton,
Mo., 1914-'17; Lathrop, Mo., 1917-'25;
Plattsburg, Mo., 1925-'27; Cameron
High School 1927-'28.

Mathematics, Supervisor of Study Hall
and Library.

Faculty Advisor of "The Tank."

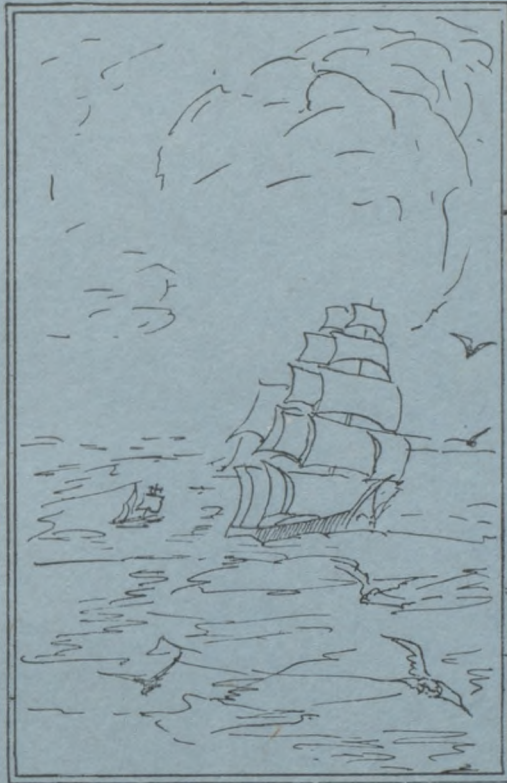
TO OUR PILOTS

When our faithful guides have lead us
To the shore, we soon embark
To foreign ports, we know not where;
But our way's not in the dark.

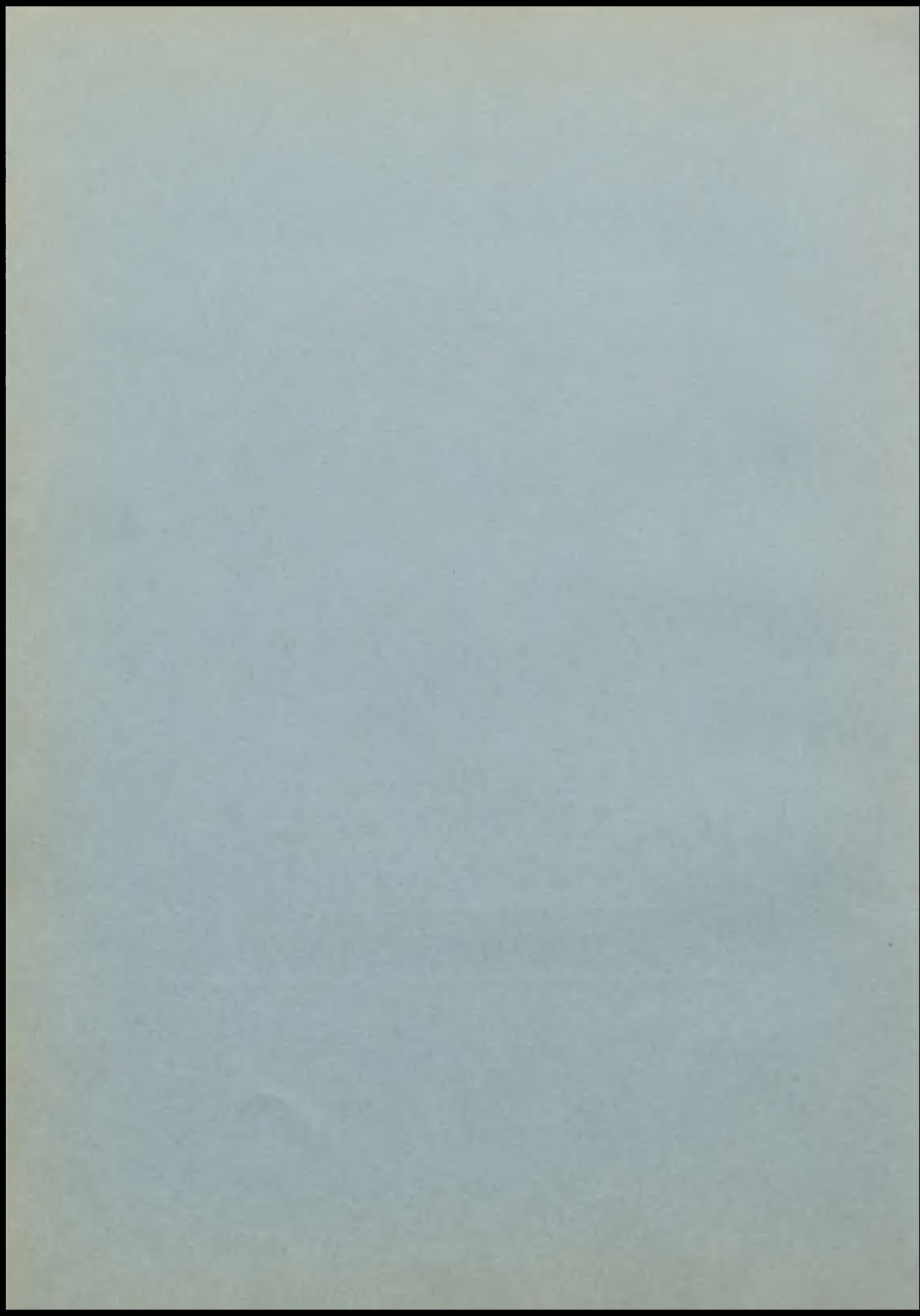
For the guardians of C. H. S.,
With vigilance and heed,
Have sacrificed from day to day
To give us what we need.

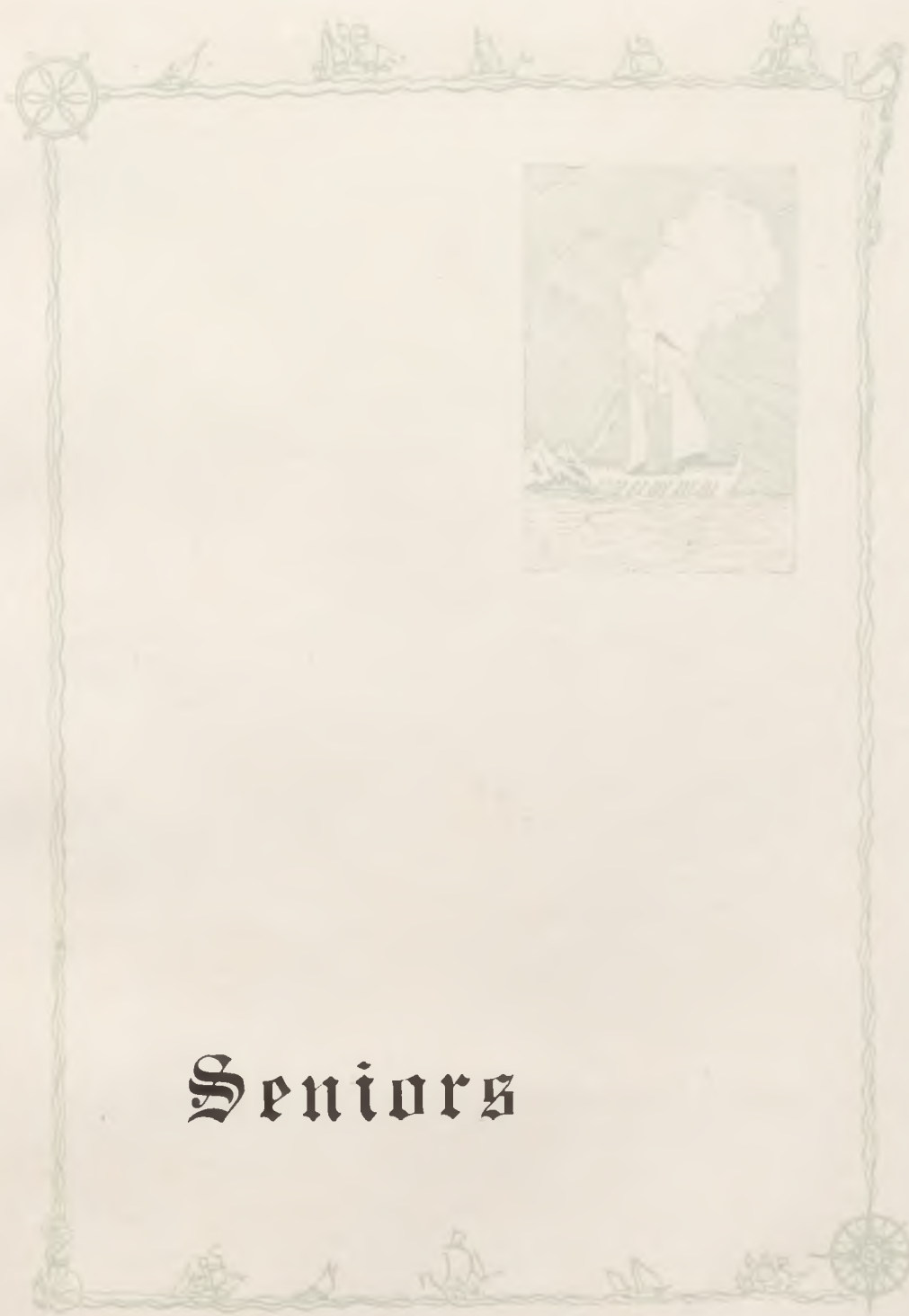
O, Pilots of our former days,
We can't forget your test,
And though our way is not yet clear,
We'll repay you with our best.

D. A.

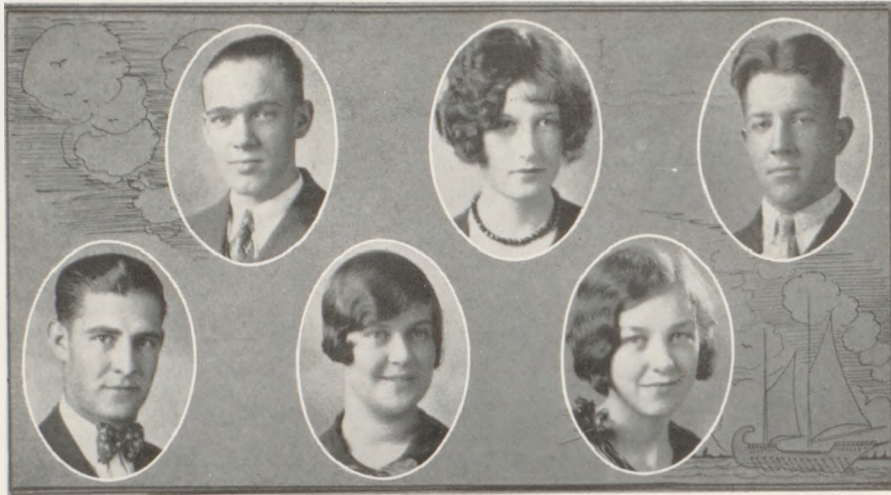


 SHIPMATES 





Seniors



CARROLL GILLIS

Pres. Senior Class; Orchestra; Tank Staff; Cornet Quartet; Old English "C" Club; Alchemists Club.
"And bring your music forth into the air."

RUSSELL PACKHAM

F. B. Letterman 1926-'27; Track squad '27-'28; "C" Men's Club; Pres. "C" Men's Club; Ed-in-Chief Mystic; Self Improvement Club.
"In dignity, and for the liberal arts, without a parallel."

LOIS BRYAN

Orchestra. Accompanist for Girl's Quartet and Junior High Girl's Chorus; Commercial Club.
"Or is she like the painting of a sorrow, a face without a heart?"

ADAH MOORE

Teacher Training Club; Orchestra; Chemistry; Cornet Quartet; Alchemists Club.
"What words divine of lover or poet are centered in this haven of impulses."

RICHARD M. BOWMAN

F. B. Letterman '27; Basketball Letterman '28; "C" Men's Club; Orchestra; Tank Staff; Alchemists Club.
"What a spendthrift is he of his time."

IRENE SHIRTS

Ed-in-Chief, Tank; Basketball 1926-'27-'28; Old English "C" Club; Pres. Vocational Guidance Club; Mystic Queen.
"Some are born great, some achieve greatness, and some have greatness thrust upon them."



MARTHA M. BUCKLEY

Girl's Glee Club; Steno-Static Club.

"Me thought all her senses were locked in her eye, as jewels in crystal for some prince to buy."

EDGAR BRYANT, JR.

Business Mgr. Mystic; Pres. Hi-Y; Pres. Steno-Static Club; Pres. Inner Circle Club.

"I never was, nor never will be false."

PEARL KAGAY

Self Improvement Club.

"They say she hath abjured the company and sight of man."

LESLIE WICKHAM Manhattan, Kas.

F. B. Letterman 1927; Basketball Squad 1928.

"Faith, I will live so long as I may, that's the certain of it."

FRANCES WRIGHT

Orchestra; Pep Squad; Vocational Guidance Club.

"She's an excellent sweet lady."

ROBERTS MIDDAUGH

Vocational Guidance Club.

"Your heart's desire be with you."



ALMA FRAZIER Rosendale, Mo.

Teacher Training Club; Orchestra;
Girls Glee Club; Self Improvement
Club.

"Let the sound of music creep in
our ears."

LELAND BRAND

Nature Study Club.

"He thinks sir, sometimes he is a
kind of Puritan."

KATHERINE GALE

Girls Glee Club; Girls Quartet;
Pep Squad; Music Club.

"I saw a sweet beauty in her face."

MOSS AUTEN

Track Letterman, 1926-'27; B. B.
Letterman, 1928; "C" Club; Tank
Staff; Hi-Y; Vocational Guidance
Club.

"Does your honor see any harm in
his face?"

MABEL WAUGH

Teacher Training Club; Alchemists
Club.

"And she is exceedingly wise."

FORREST J. SIMPSON

F. B. Letterman, 1925-'26; Track
Squad; "C" Men's Club; Nature
Study Club.

"In his royalty of nature reigns
that which would be feared."



MARJORIE SIMMONS

B. B. Letter Man 1928; Tank Staff; Alchemist Club; Pep Squad.

"Fire that is closest kept burns most of all."

E. E. MULLENIX

Self Improvement Club; Mixed Quartet; Boy's Glee Club.

"Why should a man, whose blood is warm within, sit like his grandsire cut in alabaster?"

RUSSELL WILLIAMS

F. B. Squad; Pres. Self Improvement Club; Sports Editor Mystic.

"Good reasons must, of force, give place to better."

EVELYN LEASK

Secretary Steno-Static Club.

"Thy tender-hefted nature shall not give thee o'er to harshness."

MILDRED SCHLEICHER

Tank Staff; Alchemists Club.

"So many a thousand actions, once a foot, end in one purpose."

RAY F. McCOMAS

Orchestra; Cornet Quartet; Hi-Y; Vocational Guidance Club; Old English "C" Club.

"But music for the time does change his nature."

WILLIAM ENSIGN

Hi-Y; Alchemists Club.

"For I myself am best when least in company."



HELEN SCHNEIDER

Girls Glee Club; Feature Editor
Tank; Steno Static Club.

"How far that little candle throws
its beams, so shines a good deed in
this naughty world."

HAROLD SLOAN

Steno Static Club; Tank Staff.

"He is a man, take him all in all.
I shall not look upon his like
again."

LEWIS C. CHRISTIAN Tabor, Ia.

F. B. Squad; Steno Static Club.

"He hath indeed a good outward
happiness."

VERA BAKER

Teacher Training Club; Girls
Basketball; Alchemist Club.

"I will find where the truth is hid,
though it were hid, indeed, within
the center."

RUTH SHACKELFORD

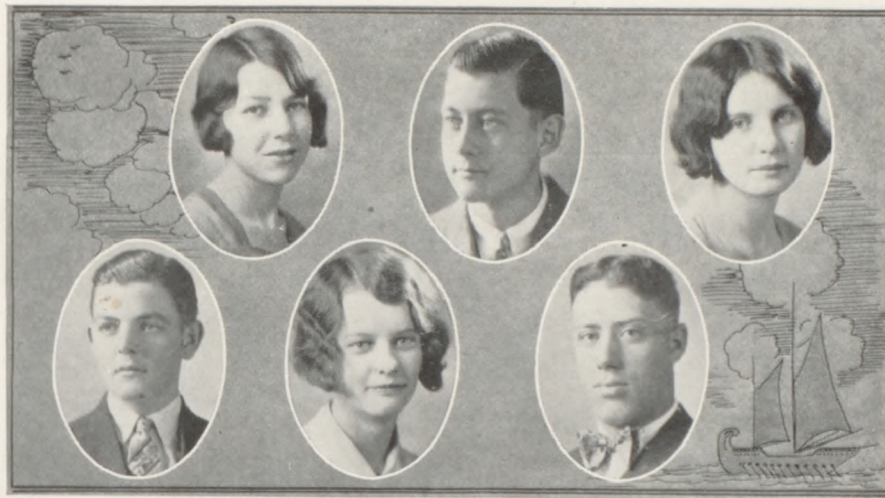
Alchemists Club.

"I'll plague him; I'll torture him."

LAVON ALTHOUSE

Hi-Y Club; Alchemists Club.

"Would you yet I were merrier."



LOUISE SHIRTS

Adv. Mgr. Mystic; Cornet Quartet; Cheer Leader, 1926-27-28; Orchestra; Vocational Guidance Club.

"And fair she is, if that mine eyes be true; and true she is as she hath proved herself."

WAYNE G. MAYES

Assoc. Ed. Tank; Vice Pres. Hi-Y; Alchemists Club.

"One of fire-new words, fashions knight."

ERA SLOAN

Basketball Captain 1928; Basketball Letter 1926-27-28; "M" Club.

"Since the affairs of men rest still uncertain, let's reason with the worst that may befall."

DICK ARNOLD

Assoc. Ed. Mystic; Self Improvement Club.

"He doth indeed show some sparks that are like wit."

MILDRED KELSEY

Accompanist 2nd Semester; Girl's Glee Club; Accompanist 2nd Semester Boy's Glee Club; Girl's Quartet; Mixed Quartet; Pep Squad; Music Club.

"I am never merrier than when I hear sweet music."

WARD L. SHELDON

F. B. Letterman 1925-26-27; B. B. Letterman, 1927-28; "C" Men's Club; Glee Club; Quartet; Steno-Static Club.

"As from a bear, a man would fly for life, so fly from her who would be my wife."



HAZEL CLAYTON

Self Improvement Club; Teacher Training Club; Glee Club; "M" Club.

"And the lady shall say her mind freely."

DEAN ROLFE

Track Squad, 1927-'28; Orchestra; Hi-Y.

"He misses not much."

EVA TEMPLE

Basketball Letter, 1927-'28; "M" Club.

"Oh, I'm stabbed with laughter."

RALPH L. ENTRIKIN

Nature Study Club.

"I never knew him otherwise."

CLIVE KETTENRING

Teacher Training Club; Alchemists Club.

"Can one desire too much of a good thing."

HUGH BROWN

Alchemists Club.

"Few words, but to effect."

ODUS L. WHITAKER

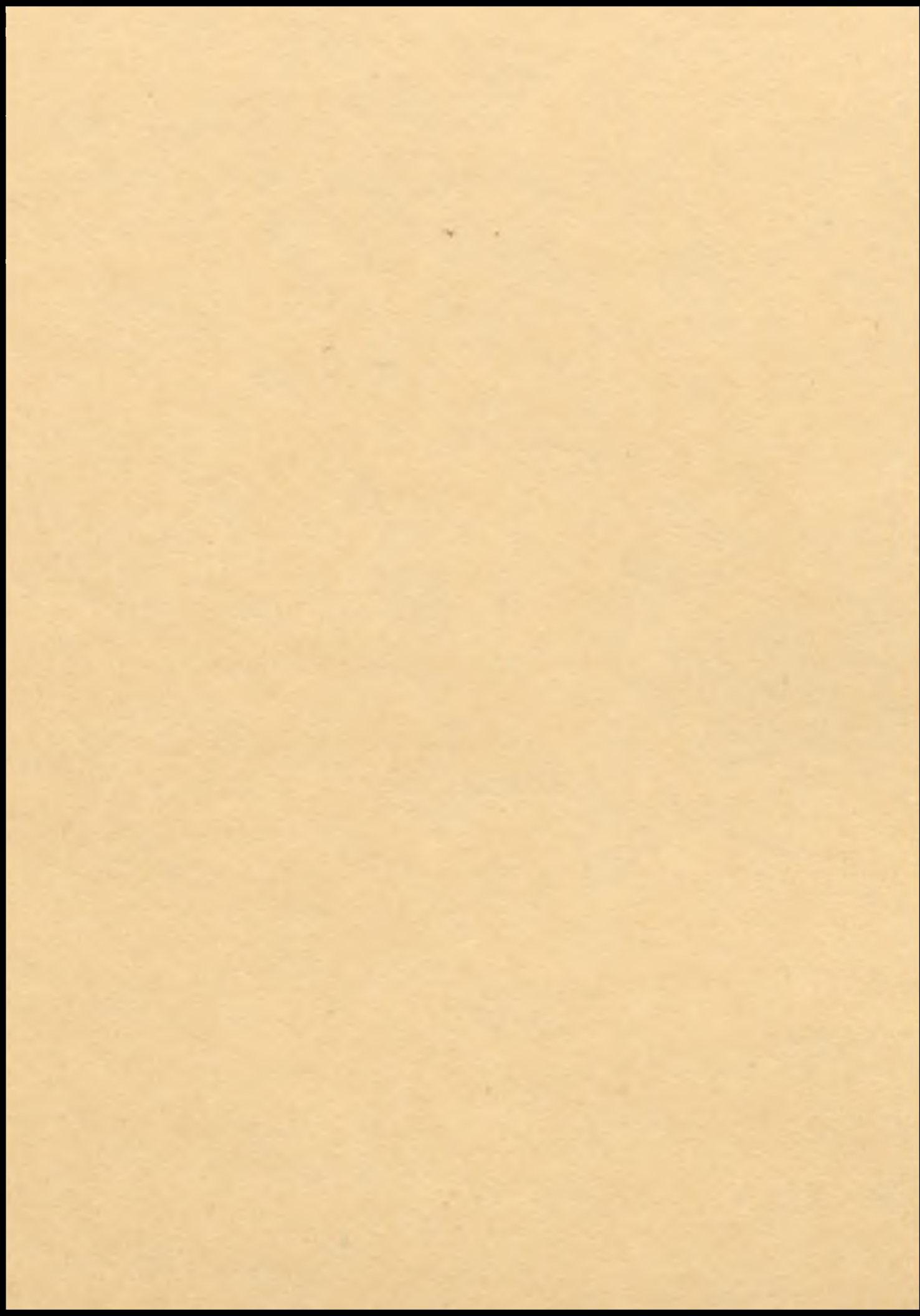
Track Squad, 1927; Steno-Static Club.

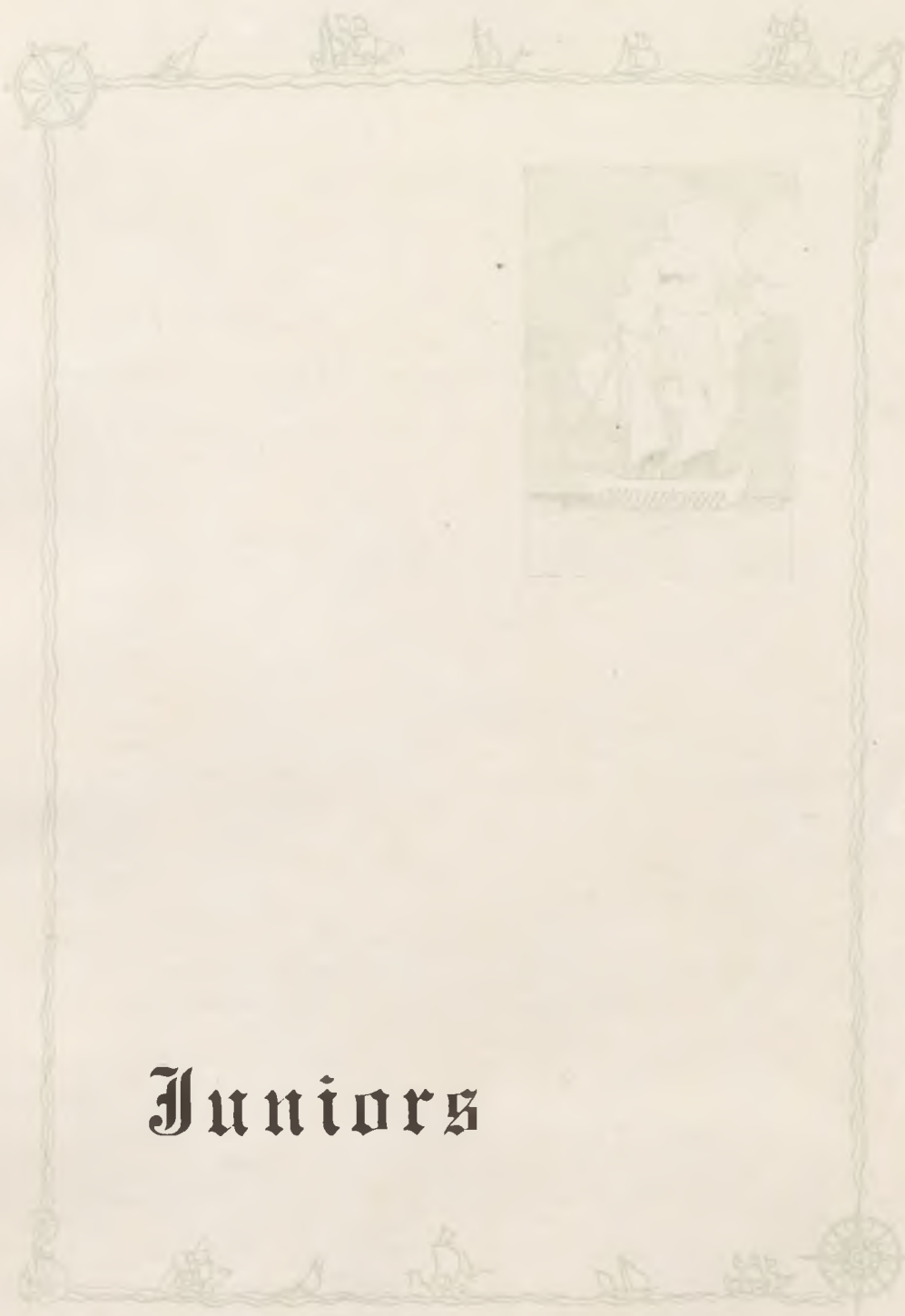
"How unremovable and fixed he is, in his own course."



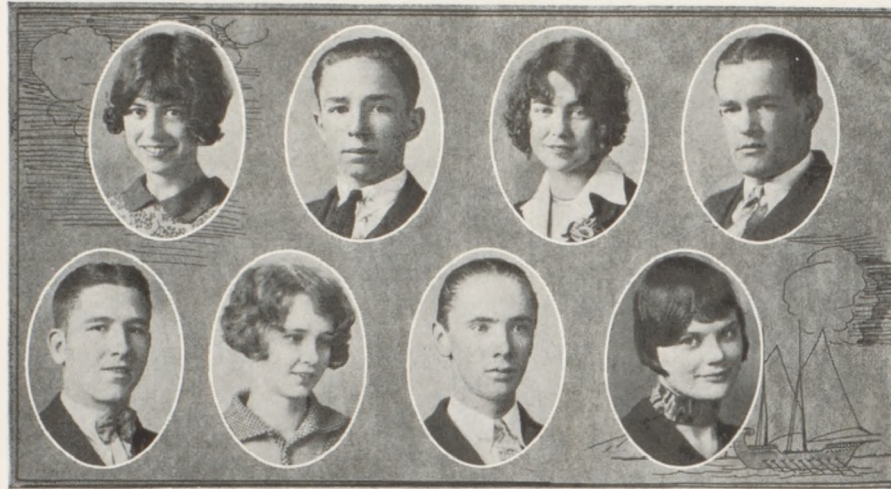
IRENE SHIRTS
MYSTIC QUEEN

Photo by Brown
Cameron, Mo.





Juniors



ESTHER SHAW

Girl's Glee Club; Girl's Quartet;
Pres. Junior Class; Tank Staff;
Self Improvement Club.

"Bright, but she lets people find it
out for themselves."

DONALD EAVES

Football Letter Man 125-'27; Track
Squad 1926-'27; "C" Men's Club;
Orchestra; Alchemists Club.

"Paving his road to Heaven with a
saxophone."

VIRGINIA HOLLAND

Self Improvement Club; Pep Squad;
Teacher Training Club; Adv. Mgr.
Mystic.

"Men are such troubles; you can't
live with them, and you can't live
without them."

HADLEY KIMES

Football Letter Man 1926-27; Track
Letter Man 1926-27; Basketball
Letter Man 1926; "C" Men's Club;
Sec'y "C" Men's Club; Chemistry
Club.

"Our handsome, dashing, smashing,
crashing halfback."

PAUL McDANIELS

Football Letter Man 1926-27; Track
Squad 1926; Basketball Letter Man
1927; "C" Men's Club; Sec'y and
Treasurer Junior Class; Alchemists
Club.

"His blushes are sublime."

LOUISE DeSHON

B. B. Letter 1928; Pep Squad; Na-
tional Forensic League; Sec'y "M"
Club.

"An athlete, scholar, and friend—
what more could one ask?"

LAVERNE WILLIAMS

Track Squad 1297-28; Hi-Yy Club;
Self Improvement Club.

"He came from the country, but he
gets E's by the millions."

GUENAVERE KNOCH

Girl's Glee Club; Self Improvement
Club; Pep Squad.

"Dear little girl with the turned up
nose."



M. LOUISE HORD

Girls Glee Club, Teacher Training Club, Home Economics Club.

"Clarence bane Swede, but still he likes his senorita."

JESSE FOSTER

Boys Glee Club, Boys Quartet, Mixed Quartet, Music Club.

"God made it, therefore let it pass for a man."

CLAUD KANAN

Steno Static Club.

"Shies from the girls."

OPAL HANCOCK

Teacher Training Club, Self Improvement Club.

"Quietness has its virtue."

FRANCES WATSON

Pep Squad, Home Economics Club.

"A maiden as jolly and sweet as one would ever care to meet."

RUTH REED

Self Improvement Club.

"A girl of such a gentle mood, And yet a friend of solitude."

KENNETH STAFFORD

Alchemists Club.

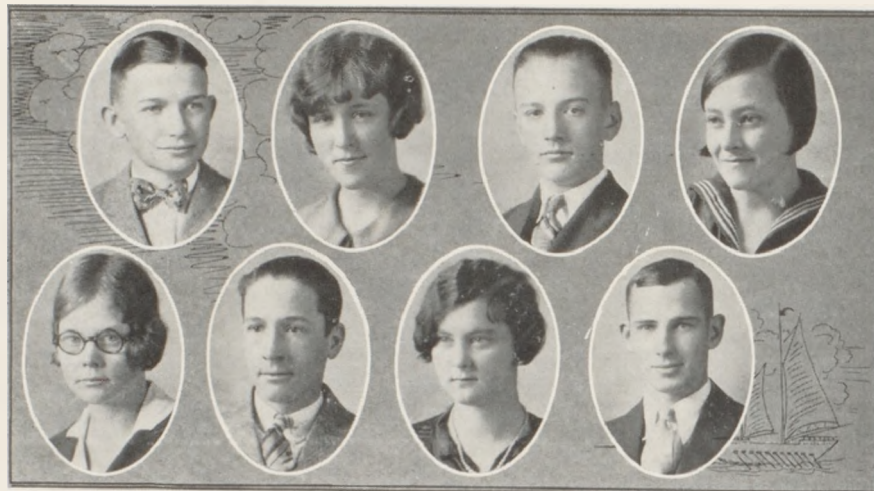
"His tongue within his lips he reins,
For who talks much, talks much in vain."

EMMA WITT

Self Improvement Club.

"A girl of girls, with a laugh for every friend, with lots of friends."

(Picture omitted through error of Staff)



KENNETH PRICE

Self Improvement Club

"He will always be high up in the air (?)"

VIRGINIA PORTER Osborn, Mo.

Girls Glee Club, Self Improvement Club.

"What are halls for if they're not to linger in?"

WILFRED CRAWFORD

Boys Glee Club, Boys Glee Club Accompanist, Mixed Quartet, Tank Staff, Cheer Leader, Self Improvement Club.

"I never felt the kiss of love, Nor maiden's hand in mine. (?)"

MILDRED BROWN

Girls Glee Club, Self Improvement Club, Pep Squad.

"Don't judge her by the noise she makes."

MARTHA HOLTZAPPLE

Teacher Training Club, Home Economics Club.

"So quiet and meek you'd never know she's near."

EUGENE ENSIGN

Steno Static Club.

"He has the flivver, but where is the flapper?"

ALMINA GLOSSIP

Steno Static Club.

"Whether she says much or not, we are convinced she thinks a lot."

EARL PORTER

Football Squad, Steno Static Club.

"Though not an ornithologist, he's interested in Crows."



HELEN CHIVENS

Vocational Guidance Club.
"Men beware—I'm a man hater."

WESLEY BALLINGER

Hi-Y; Self Improvement Club.
"Happy-go-lucky, and full of fun,
In shorthand he's the brightest one."

HELEN CONSTANCE

Teacher Training Club.
"Thinks twice before she speaks,
Then keeps still."

LELAND WARNER

F. B. Squad; Track Squad; Tank
Staff; Sec'y & Treas. Hi-Y; Self
Improvement Club.
"I want to see my brother."

JAMES RUSSELL

Glee Club; Orchestra; Boy's Quar-
tet; Mixed Quartet; Hi-Y; Alchem-
ists Club.
"Sweet, meek, and mild, He never,
never will be wild."

LOUISE BERTEN

Glee Club; Self Improvement Club;
Teacher Training Club.
"She is so loyal, faithful, so true
That what ever you ask her, she
gladly will do."

DALE CONSTANCE

Vocational Guidance Club.
"Anyone wanting a date, please
apply here."

CATHERINE CLINE

Girl's Glee Club; Music Club.
"Modest and shy—rare qualities."



DOROTHY CRAWFORD

Self Improvement Club.

"Willing she is and eager to please,
What other virtues are better than
these."

JOHN GROEBE

Orchestra: Hi-Y; Vocational Guidance Club.

"Naughty, naughty, he runs down
dark alleys, smokes cigarettes, and
smells bevo bottles."

MAE MORTON

Self Improvement Club.

"The peculiar girl with a strawberry blonde."

HOWARD BENDER

Track Squad; Boy's Glee Club; Vocational Guidance Club.

"Three hundred and sixty rods
make a mile,
How many rods were spared to
make this child?"

WILLIAM MALLORY

Steno Static Club.

"What a spendthrift he is of his
time. (?)"

DOROTHY CALHOON

Sec'y Self Improvement Club.

"Happy-go-lucky and full of glee, a
stenographer she is sure to be."

CRETA ALEXANDER

Home Economics Club.

"Just another little lass who is
faithful to the Junior class."

KATHERINE SWORDS

B. B. Squad; Self Improvement Club.

"Shy, and doesn't talk much."



AMELIA THEILMANN

Self Improvement Club.
"She's quiet and friendly,
A mighty good sort."

BLANCHE CUMMINGS

Basketball Squad; "M" Club.
"Her disposition is as sunshiny as
her hair."

EUGENE TRICE

Vocational Guidance Club, National
Forensic League.
"Imagine him with hair on his coat
sleeve and powder on his tie."

KERMIT KNOCH

Orchestra; Tank Staff; Hi-Y Club;
Alchemists Club.
"I may not be handsome, but I'm
good looking."

HELEN NELSON

Self Improvement Club.
"Some talk little, some talk more,
but she, like a brook, goes on for-
ever."

DEBORAH BALDWIN

Girls Glee Club; Sec'y Home Eco-
nomics Club.
"She certainly can talk, but what
does she say."

QUINTUS MILLER

Steno Static Club.
"Teachers can't keep him from say-
ing 'guy,' yet he is witty and very
wise."

REVE FITE

Home Economics Club.
"She spends most of her time wait-
ing for Frances."



MAURICE CATER

Orchestra; Alchemists Club.
"Girls I can't belong to all of you."

MURIEL M. DAVIS

Girl's Glee Club; Home Economics Club; Teacher Training Club.
"Built for comfort and not for speed."

LELAN RYAN

Hi-Y; Self Improvement Club.
"I didn't know I was so dear until the girls took advantage of Leap Year."

BURLAH BIRD

Tank Staff; Pep Squad; Self Improvement Club.
"She doesn't say much so we conclude she is in love."

GRACE WILEY

Girl's Glee Club; Teacher Training Club; Home Economics Club.
"Interested in a freshman."

ROLLAND SELLE

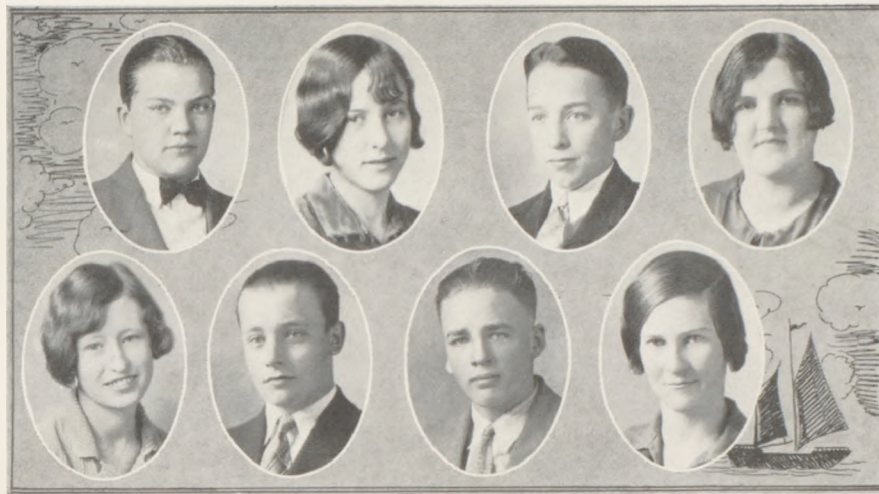
Self Improvement Club.
"All great men are dying; I don't feel very well myself."

ELIZABETH WHITAKER

Pep Squad; Self Improvement Club.
"Oh, maiden with the meek blue eyes."

LOUISE GILLILAND

Girl's Glee Club; Self Improvement Club.
"A cheery lass with a generous smile, she makes one feel that life is worth while."



JAMES VANWINKLE

Basketball Squad; Boys Glee Club;
Music Club.

"Getting the most out of life with
the least effort."

ALMA GIBSON

Basketball Letter; Self Improve-
ment Club; Teacher Training Club.

"If silence were gold she would be
a millionaire."

CHARLES CALDWELL

Hi-Y Club; Music Club.

"How he gets those grades in His-
tory, is to all of us a mystery."

ELIZABETH O'CONNOR

Self Improvement Club.

"She aspires to be a Junior,
So her picture's put in here."

AILENE BROWER

B. B. Letter, 1927-'28; Girls Glee
Club; Orchestra; Girls Quartet;
Mixed Quartet; Pep Squad; Pres.,
Music Club.

"I'll be there in a minute."

DENNIS DORSEY

Football Squad; Orchestra; Hi-Y
Club; Vice-Pres., Alchemists Club.

"Life is a serious business, what
charm have girls for me?"

CLARENCE ZIMMERMAN

Vocational Guidance.

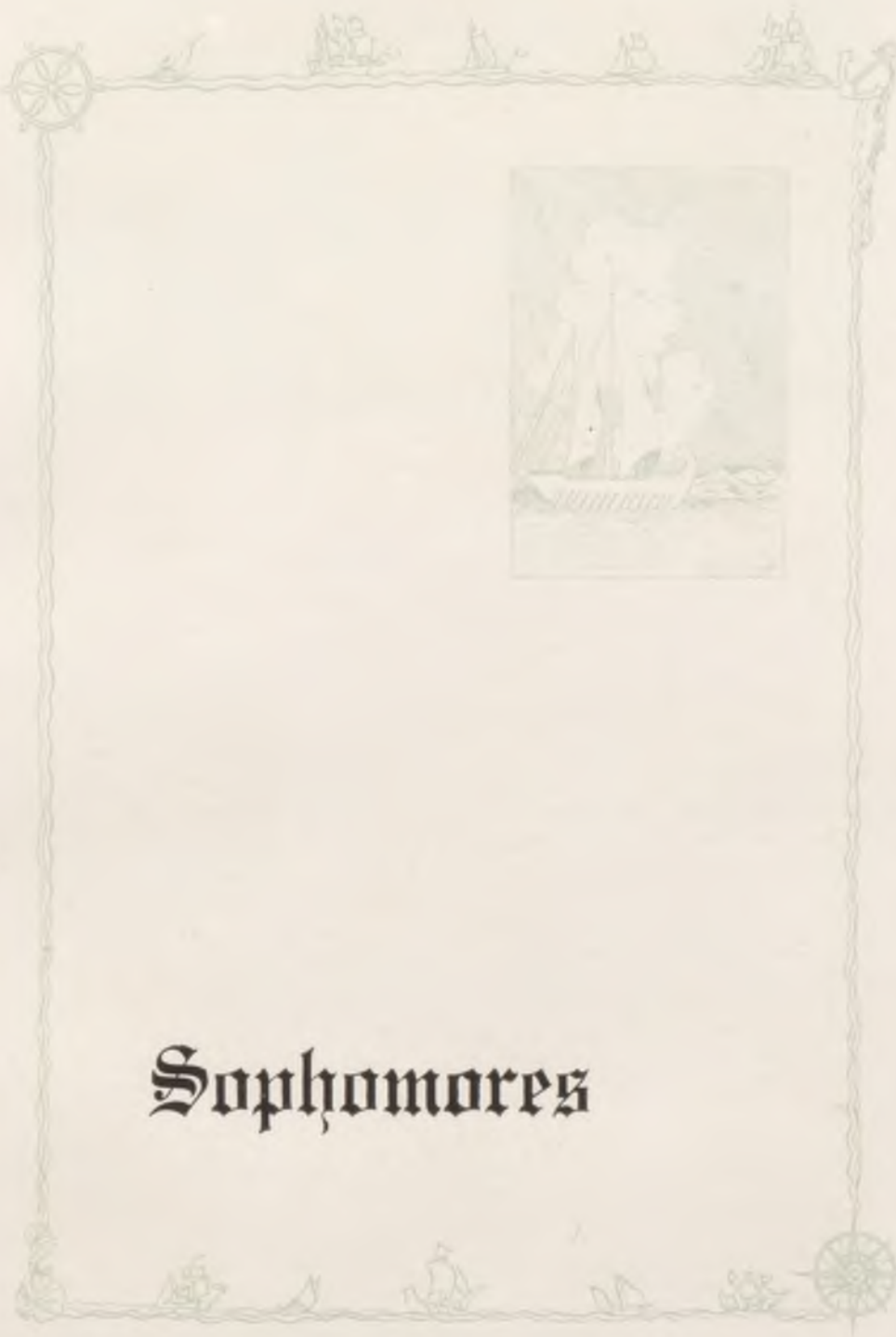
"Hard on his dad's Ford."

ANNA CARROLL

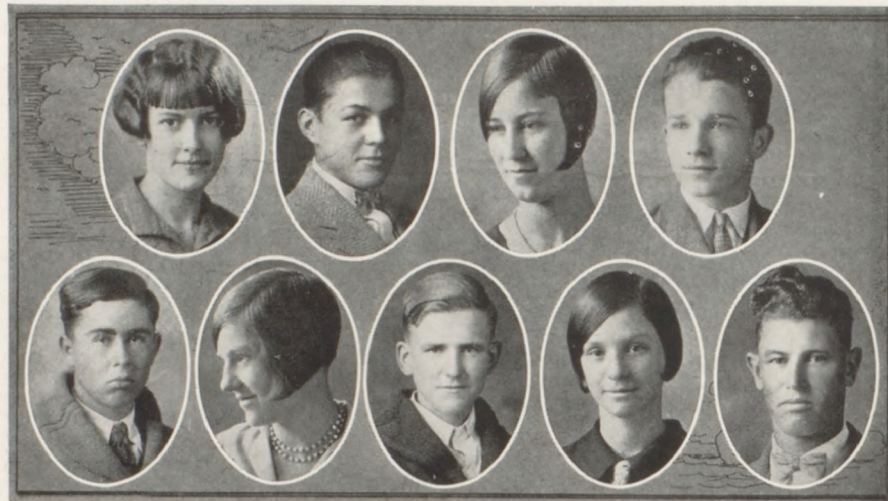
Self Improvement Club.

"She always tries to say the kind-
est things in the kindest way."





Sophomores



MARTHA WAMSLEY

Glee Club; Sec'y "M" Club.
"A studious mind is ever evident."

DURL ROLFE

Boy's Glee Club.
"Girls first, my country next, and
my studies last."

RUTH HOLADAY

Girl's Glee Club; "M" Club.
"Her ways are ways of pleasant-
ness, and all her paths are peace."

GLENWOOD GILLILAND

Orchestra; Hi-Y; Vice Pres. Soph.
Class; Self Improvement Club.
"Heard only behind that jazzy
troubone."

JEWEL STREU

B. B. Squad; Nature Study Club.
"A future basketball star, with a
quiet mien."

FREDA MAE CLINE

Girls's Glee Club; "M" Club.
"We think she is a vamp, but we
have never had any evidence."

WILLARD STEADMAN

Nature Study Club.
"Oh, the fascination that a mathe-
matical problem has for me."

ORPHA SLOAN

"M" Club.
"For she is just the quiet kind
whose nature never changes."

ARNOLD BROWER

F. B. Squad 1927; Boy's Glee Club;
Music Club.
"There must be some good hard
work in him, for none has ever
come out."



LORNA BROCKMAN

Girl's Glee Club; "M" Club.
"One of the high school ornaments."

LULA MAE PITTMAN

Girl's Glee Club; Home Economics Club.
"She's waiting for a ring."

JERRY BRAMMER

F. B. Letter man 1927; Track Squad 1926; B. B. Letter man 1928; "C" Men's Club; Nature Study Club.
"An earnest chap, with a cherry smile and a good heart."

JOHN ELMORE

Boy's Glee Club; Music Club.
"Out of breath to no purpose, and very busy about nothing."

VERA WISE

Girl's Glee Club; Home Economics Club.
"Pearls of wisdom flow from her mouth—but when?"

MARTHA R. HUTTON

B. B. Letter 1928; Pep Squad; "M" Club.
"If I only had my Latin."

FRANKLIN ELSTON

Self Improvement Club.
"Blessed are they who are silent, for they are never quoted."

PAUL M. CUTLER

B. B. Squad; Nature Study Club.
"Of making many books there is no end; and much study is weariness of the flesh."



GLENN BAKER

F. B. Squad; Boy's Glee Club; Nature Study Club.

"He thinks before he steps, and he steps before he goes."

ETHELYN ENSIGN

"M" Club.

"Rarely heard, but one who sees everything."

JOHN BAKER

F. B. Squad; Self Improvement Club.

"He is a self made man--the result of unskilled labor."

LOIS DAVIS

Nature Study Club.

"A pretty good kid--when she sleeps."

RALPH HARTFORD

Steno Static Club.

"He read about Eve in the Bible, and thought twice."

FLORENCE HALEY

"M" Club.

"She is, but words would fail to tell what."

JEWELL BROWN Winston, Mo.

Girl's Glee Club; Self Improvement Club.

"A quiet girl with blondy hair, with closed (?) mouth and baby stare."

HAZEL SHACKELFORD

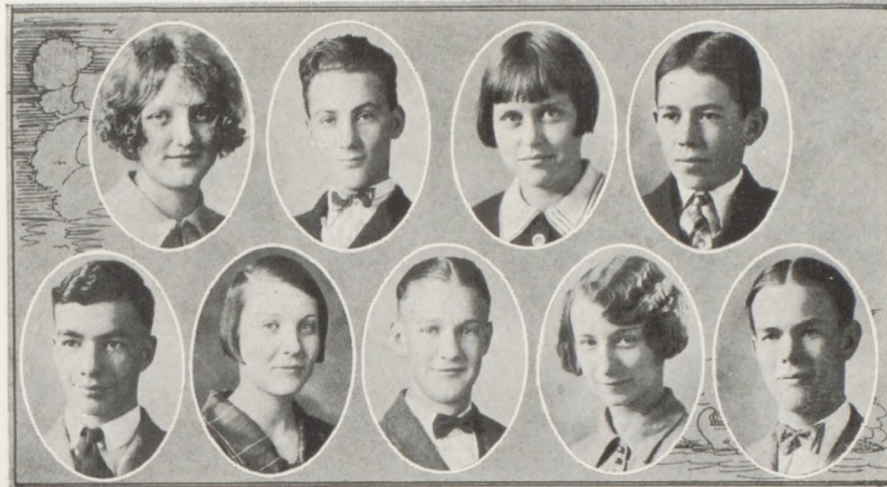
Home Economics Club.

"When I speak I think therefore I don't think."

C. A. O'NEAL

Nature Study Club.

"The height of my ambition is to be a bachelor."



EVELYN ROWELL

Girls Glee Club; Music Club.

"Only speaks it one time—that is all the time."

FRAZIER STAPLES

Boys Glee Club; Music Club.

"Life is a jest, and all things show it. I thought it once, but now I know it."

LOIS WILLIAMS

Girls Glee Club; Music Club.

"After man came woman, and she's been after him ever since."

BILLIE QUIGLEY

Orchestra; Hi-Y; National Forensic League; Nature Study Club.

"His laugh is his trademark, patent applied for."

GLENN PETERS

Football Squad; B. B. Squad; Orchestra; Soph. Pres., 2nd Sem.; Hi-Y; Nature Study Club; National Forensic League.

"When I'm big, I'll teach those heathen Democrats, that's what I'll do."

REBA BIGGERSTAFF

Girls Glee Club; "M" Club.

"She likes fruit, mainly dates."

DONALD GILLIS

Orchestra; Hi-Y; Nature Study Club.

"Music adds a great deal to one's soul."

MARGARET MAXWELL

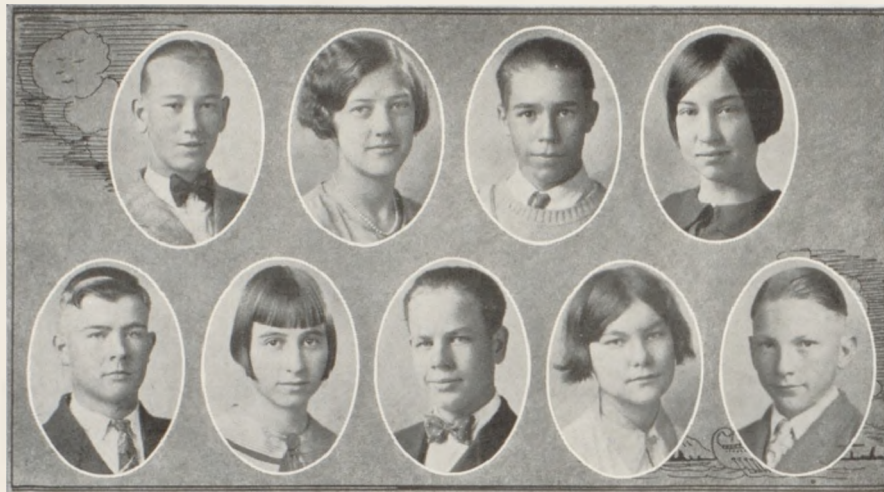
National Forensic League; Girls Glee Club; Self Improvement Club.

"Few disputes exist which have not originated in women."

CLAIR LUCE

Orchestra; Hi-Y; Nature Study Club.

"Looks wise,—but you can't always tell."



PHILLIP DAVID

Boys Glee Club, Music Club.
"If there were only more time for
fun and less for work."

EARL UPCHURCH

Nature Study Club.
"I slept, and dreamed that life was
beauty. I awoke, and found that
life was duty."

WINNAGENE KEMPER

Home Economics Club.
"A girl in a million, with a smile
for all."

STELLA NORWOOD

Home Economics Club.
"We wonder what those brown
eyes say."

LAWRENCE PHELPS

Football Squad; Nature Study Club.
"Whose armour is his honest look."

VERL KING

Self Improvement Club.
"We can't tell much about him, but
we know he has a future."

MYRTLE HANCOCK

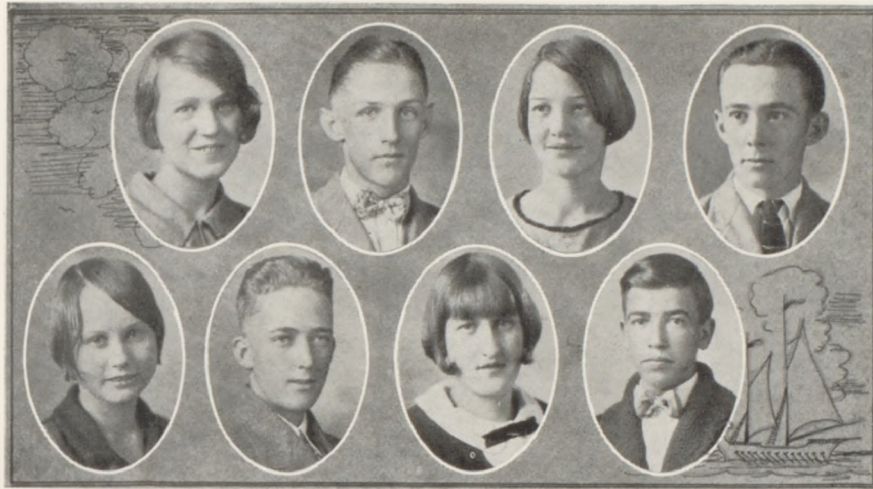
Girls Glee Club; "M" Club.
"Be good and you'll be happy, but
you'll miss lots of fun."

DOROTHY CARTER

Steno Static Club.
"It's lots of fun to study."

JAMES SCAMMAHORN

Hi-Y Club, Self Improvement Club.
"He would stop St. Peter's roll call
to ask a question."



LEONA LOGUE

Nature Study Club.

"A friendly lass with a smile that cheers."

DOROTHY PARK

"M" Club.

"Dignity and reserve are two of the graces she possesses."

NORMAN NEIL

Orchestra; Hi-Y; Music Club.

"Can be found studying, when there is nothing else to do."

QUINCY KEMPER

"Industrious, agreeable, and always ready to do his part."

NELLIE SIMPSON

"M" Club.

"Her mouth is a rattling good one."

RUBY SIMPSON

"M" Club.

"A credit to the institution."

LESTER SHELL

Orchestra; Self Improvement Club.

"A quiet lad, though never sad."

RALPH RILEY

Nature Study.

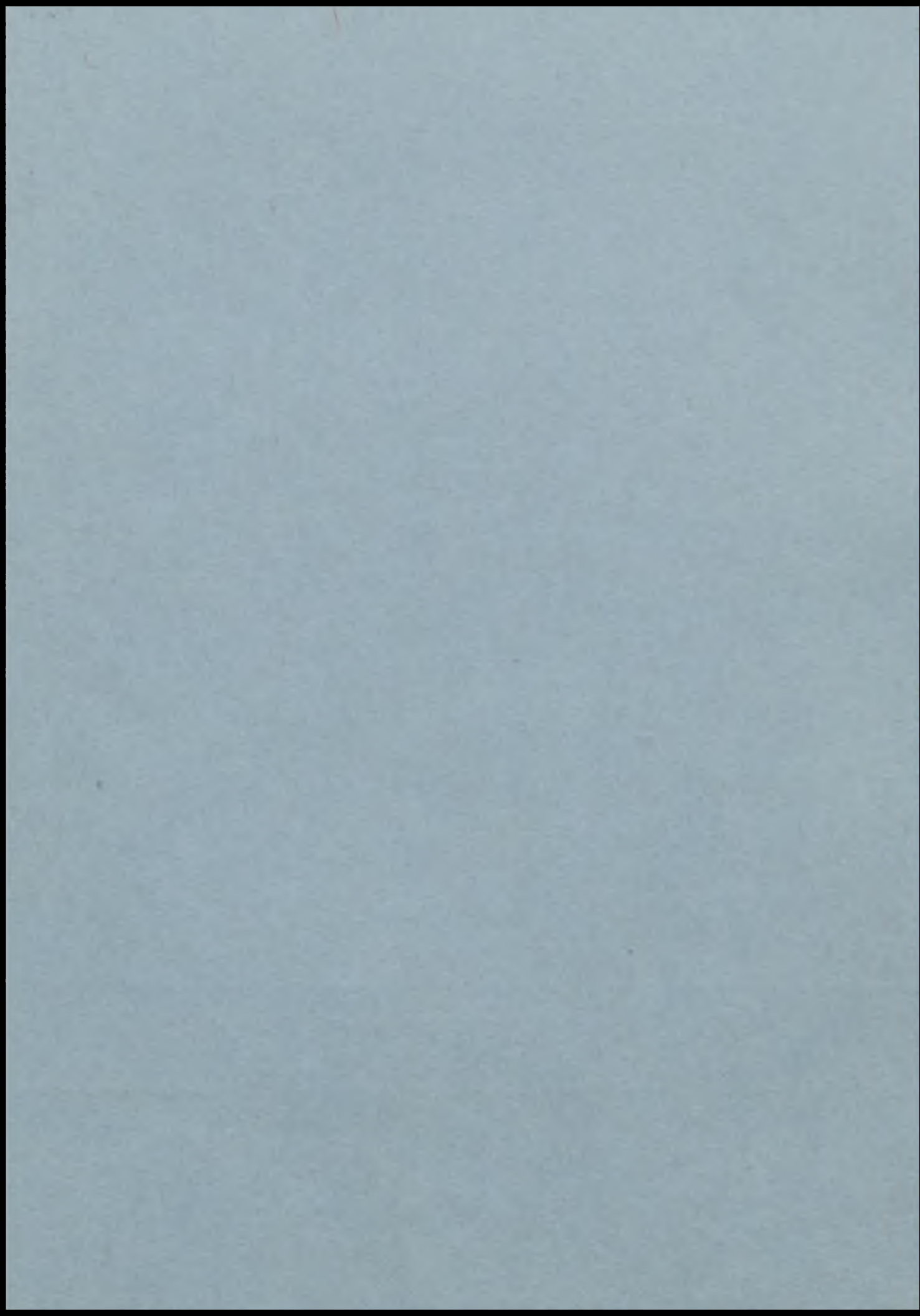
"It is no fun to loaf, unless you can bother someone who is trying to work."

The MYSTIC





SPORTS





Miss Cook

Mr. Doolen

OUR COACHES

Much credit should be properly given to our coaches, Doolen and Cook, for their untiring enthusiasm and knowledge of the game. They did much to inspire their Dragons and Dragonettes with the proper spirit of the game.



"Bill" Quigley, Louise Shirts, "Bill" Crawford

YELL LEADERS

The Yell leaders were a large factor to the athletics of C. H. S. this year. They deserve much credit for the years work.



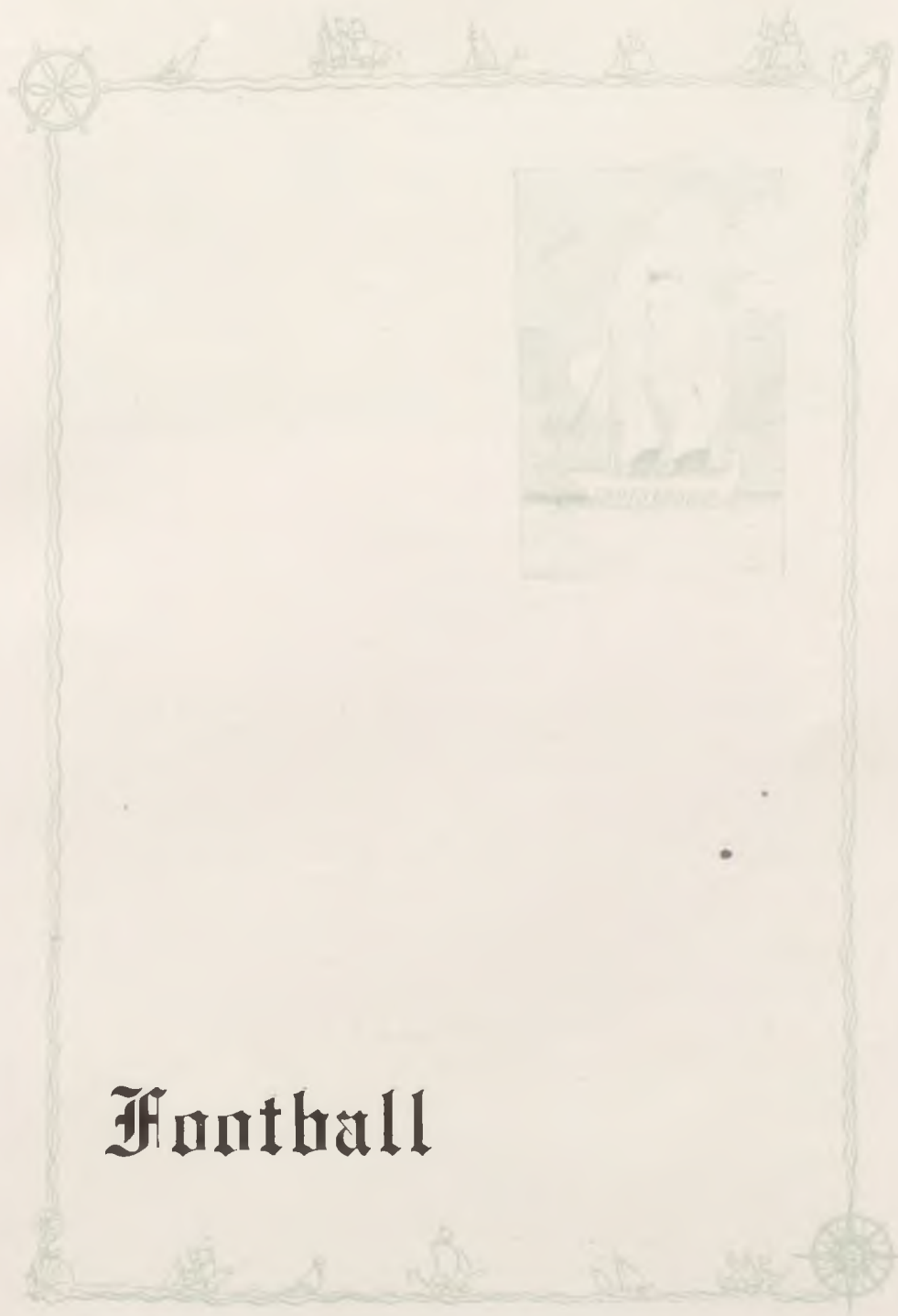
THE PEP SQUAD

First Row, Left to Right—Brower, Simmons, Brown, McClain, Bird, Watson, Crawford, Holland

Second Row—Wright, Kelsey, DeShon, Gale, Morton, Whitaker, Knoch, Hutton

The Pep Squad, composed of Senior High girls, entertained the crowds between halves, with cheers, yells, and well executed drills. These girls, who were the leading "spizarinctums," added much pep to our athletics, and should be recognized for their excellent support and boosting for Cameron High School activities.





Football



FOOTBALL SQUAD

First Row, Left to Right—Simpson, Warner, J. Baker, Phelps, F. Howard, Anderson, Williams, W. Eaves

Second Row—Stoffle, Pryor, Bowman, Allen, Sloan, Wickham, McDaniels, R. Packham, Brammer

Third Row—Coach Doolen, Porter, D. Eaves, Bell, Christian, Garvin, G. Baker, Parks, A. Packham, Leach, Supt. Elliott

Fourth Row—Rider, Flanders, Harter, Dorsey, King, Shaw, Peters, Lyle, King

Often the men on the second or third team are forgotten or overshadowed by the men who are able to win and wear the golden "C." However it is impossible to have a good first team without loyal and consistent workers on the squad who do not make the first eleven. These men, through aggressiveness, obedience, concentration of mind, and dogged determination, compel each man to put forth his best efforts. For three months they tackle, block and charge their heavier and more experienced team mates, take their share of bruises, sprains, and fatiguing pins. Well do they know that there is little chance of their names being shouted from the admiring bleachers, but their love of the game and a determination not to be a "quitter" keeps them "carrying on." So hail to the fellow behind the scenes who makes the first team man be worthy of his honors.



ROBERT HOWARD—"Bob" End Cameron, Mo.
160 Pounds 18 Years

Although "Bob" received a severe injury in the Excelsior Springs game, he was back in the game within two weeks, and as aggressive as ever. This is his first year and his presence will be looked forward to in next years line up.

PAUL ALLEN—"Bud" Fullback Manhattan, Kans.
186 Pounds 18 Years

Another boy from Kansas was Paul. His steady driving and easy way of pivoting out of an opponent's arms will not soon be forgotten. This was Paul's first and last year with the Dragons.

CLYDE GARVIN—"Garvie" End Cameron, Mo.
155 Pounds 17 Years

"Garvie" was a fast and dangerous end, who "messed up" many a play at the right moment. This is his first year, and he has another year ahead of him.

HUGH SLOAN—"Grapes" Guard Cameron, Mo.
150 Pounds 17 Years

"Grapes," a two letter man, was a man who had the necessary chatter to keep the team driving at all times. Never was there a play through the line that "Grapes" was not mixed up in, and with his eye always on the ball. This is his last year.

BRYAN STOFFLE—"Stub" Guard Cameron, Mo.
160 Pounds 18 Years

Because of his stature he was dubbed "Stub," but no one ever accused him of having any shortcomings when on the gridiron. "Stub" and "Grapes" were our midget guards. Bryan has another year with us.



The MYSTIC



LEROY PRYOR—"Bob" Tackle Cameron, Mo.
173 Pounds 18 Years

This is "Bob's" first year. Though a Freshman he was a hard man for his opponents to take care of, and very few "backs" ever got around "Bob's" side of the line. Much will be expected of him in his next three years.

BASIL BELL—"Ice Wagon" Halfback Cameron, Mo.
155 Pounds 17 Years

Basil was another fast half and very good on offense. This was "Bell's" first year with the Dragons, and he has three more years.

RICHARD BOWMAN—"Dick" Guard Cameron, Mo.
196 Pounds 18 Years

"Dick," a jolly-good-natured kid was steady and hard player. The "backs" could always depend on "Dick" to make a hole for them. This is Richards last year and his place will be a difficult one to fill.

DONALD EAVES—"Don" Halfback Cameron, Mo.
141 Pounds 16 Years

"Don," a Junior, is a two year man. Although he is rather light he makes up for it in his swiftness. He will be back with us next year.

LLOYD PARK—"Parksie" End Cameron, Mo.
150 Pounds 17 Years

Lloyd got a chance to show his colors in the Excelsior Springs game, when "Bob" Howard got hurt, and proved that he had the necessary fight that is needed to be a defender of the Gold and Black. He has another year with the Dragons.

JERRY BRAMMER—"Jerry" Halfback Cameron, Mo.
160 Pounds 16 Years

"Jerry" was a fast-stepping halfback, and one of the neatest open field runners seen on any field this year. "Jerry," a Sophomore, has two more years to battle for the fiery Dragons.



Football Resume

The Dragons of '27, playing under the Old Gold and Black, were able to add seven more scalps to the belt of C. H. S., and to show the students and townspeople some of the best examples of football that they have witnessed on the gridiron. To "Art" Doolen goes the distinction of having coached two as good teams as Cameron High has produced. In the nine games played this season, the boys scored nearly one hundred points more than their opponents, and the teams that crossed under the shadow of the Dragon's goal posts realized that they had accomplished something that they might well boast of. In the Turkey Day game, after battling three and one-half quarters to a scoreless tie, Dame Fortune awarded the game to Liberty by a spin of the wheel of fate; but the way those moleskin-clad warriors fought for the glory of their school, and the way the student body cheered their companions on, makes the game go down in the annals of football history as a defeat attended by much glory.

WITH	AT	DATE	C. H. S.	OPPS.
Lathrop	Cameron	Sept. 23	18	6
Lafayette	Cameron	Sept. 30	20	0
Excelsior Springs	Excelsior Springs	Oct. 7	0	6
Kidder	Cameron	Oct. 14	26	0
Chillicothe	Maysville	Oct. 21	19	7
Maysville	Cameron	Oct. 28	25	6
Richmond	Richmond	Nov. 4	13	13
Trenton	Cameron	Nov. 11	19	0
Liberty	Cameron	Nov. 24	0	7
Total			140	45



Basketball

Resume of Season

After a rather uncertain start at the first, the boys settled down and succeeded in completing a very successful season which terminated in a thrilling climax with a victory over Trenton. A captain was appointed for each game. This plan has proved very successful. Richard Bowman was chosen captain for the entire season. The Dragons were runners-up in the M. W. C. Tournament and made a credible showing in the Northwest Missouri State Tournament.

DATE	WITH	PLACE	C. H. S.	OPPS
Dec. 21	Hamilton	There	18	16
Jan. 6	Hamilton	Here	16	13
Jan. 13	Benton	Here	14	54
Jan. 19	Liberty	There	7	33
Jan. 20	Lafayette	Here	14	30
Jan. 26	Chillicothe	There	18	16
Jan. 27	Trenton	There	21	12
Feb. 3	Chillicothe	Here	18	17
Feb. 10	Lafayette	There	17	21
Feb. 16	Liberty	Here	17	27
Feb. 18	Benton	There	5	35
Mar. 2	Trenton	Here	26	23



BOY'S BASKETBALL SQUAD

First Row—Left to Right: Paul Sloan, Leslie Wickham, Ward L. Sheldon,
Paul McDaniels, Hadley Kimes, Robert Howard, Glenn Peters

Second Row: Coach Arthur Doolen, Jewell Stren, Harold Leach, Harold
Sloan, Moss Auten, Jerry Brammer.

The first squad, pictured above was picked from a group of some fifty aspirants who came out at the beginning of the season. The second squad consisted of fifteen additional men who ambitiously contributed their share to the success of the season.

The unprecedented sale of season tickets to the students, their loyal support at each game, and the unparalleled support of the townspeople, have been important factors in making the squad maintain their arduous practice and keep the team in trim.

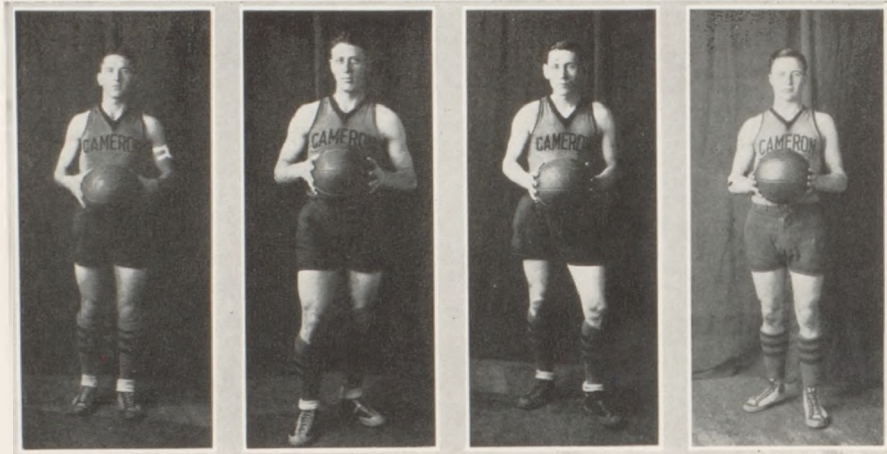


CAPT. RICHARD BOWMAN Guard Cameron, Mo.
Richard, "The Lion Hearted," was an excellent guard, and his steady and aggressive playing won for him the captaincy of the 1928 Dragons.

HADLEY KIMES Center Cameron, Mo.
On the court Hadley was a man who could handle the ball with ease and skill. He was out of several games because of illness, but finished the season in great style. "Had" will be with us another year.

PAUL SLOAN Forward Cameron, Mo.
Although Paul was playing his first year with the Dragons, he made the team because of his ability to score, and his co-operation with his team mates. He has two more years with C. H. S.

MOSS AUTEN Forward Cameron, Mo.
This was Moss's first and last year with the fiery Dragon basketeers. He was always a fighting Dragon, and always on his toes. Moss will be greatly missed next year.



PAUL McDANIEL Guard Cameron, Mo.
"Mac" was a steady and aggressive player, who kept his opposing forward in "hot water." "Mac" has one more year to battle for the Old Gold and Black.

WARD L. SHELDON Guard Cameron, Mo.
"Vici," who has played his last year with the Dragons, was a guard that covered the court well, and who could be depended upon to ring up scores from time to time. We lose Ward L. through graduation.

BASIL BELL Forward Cameron, Mo.
A dangerous and hard fighting forward. Basil made the team his first year out, and much will be expected of him in his future years.

JERRY BRAMMER Center Cameron, Mo.
The speedy boy from the Sophomore class, was Jerry. He was especially outstanding because of his ability to pass accurately, and handle the ball well. Jerry will be with us two more years.



CAPT. ERA SLOAN Jumping Center Cameron, Mo.
 Captain Era deserves much credit for the spirit that kept the Drag-
 onettes on their toes throughout the entire season. Her fight and
 ability will be a great loss to next year's team; we lose her through
 graduation.

IRENE SHIRTS Guard Cameron, Mo.
 Irene, for two years, has fought for the Old Gold and Black. Her
 quick and consistent playing marked her as an outstanding guard.
 This is Irene's last year.

EVA TEMPLE Forward Cameron, Mo.
 Another Senior girl we lose through graduation, whose fighting spirit
 will be greatly missed by next year's team. She was always on her
 toes, and her ability to "ring" baskets was very outstanding.

MARJORIE SIMMONS Forward Cameron, Mo.
 Although small, Marjorie was not handicapped in her skill with the
 ball. Marjorie has played her last game for C. H. S.



AILEENE BROWER Forward Cameron, Mo.
Her bewildering shiftiness of foot enabled her to score many a basket. Aileene has one more year to be with us.

OLIVE WHITAKER Guard Cameron, Mo.
A steady, consistent guard, who knew how to handle a basketball. She has two more seasons to play for C. H. S.

RUTH BAKER Running Center Cameron, Mo.
This is Ruth's first year, and her quick, alert, and excellent playing placed her on the first team. Much will be expected of her in the future.

LOUISE DeSHON Center Cameron, Mo.
Her quick, and active playing, marked her as an excellent center. She will be with us again next year.



TRACK SQUAD OF 1928

First Row—Left to Right: B. Howard, Baker, Leach, Neil, Constance, G. Baker, Packham

Second Row: Lyle, Phelps, Bratcher, Ellwood, Flanders, Brammer, L. Powers, Sloan, Simpson, Bender, Auten, Rolfe, Parks, Ballinger, Coach Doolen

Third Row: Davis, Arnold, Livingstone, Seammahorn, W. Eaves, Rider, E. Johnson, Flanders, Akey, Warner

Fourth Row: Wylie, Kimes, Pryor, Williams, Powers, Shaw





TRACK SQUAD OF 1927

First Row—Left to Right: Warner, Hillebrand, Whitaker, Williams, Folsom, Rolfe, Shaw, Parks

Second Row: Kimes, Brammer, Pittman, Eaves, Garvin, Harter.

Third Row: Foster, L. Kanan, Bender, H. Kimes, R. Warner, King, McDaniel, Auten, Hunter, Zancker, Couch Doolen.

This track squad, pictured above, had one of the best seasons in track that any Dragon team has had in previous years. They won honors in all the meets attended. A number of men will be back next year to make another successful season.



The MYSTIC



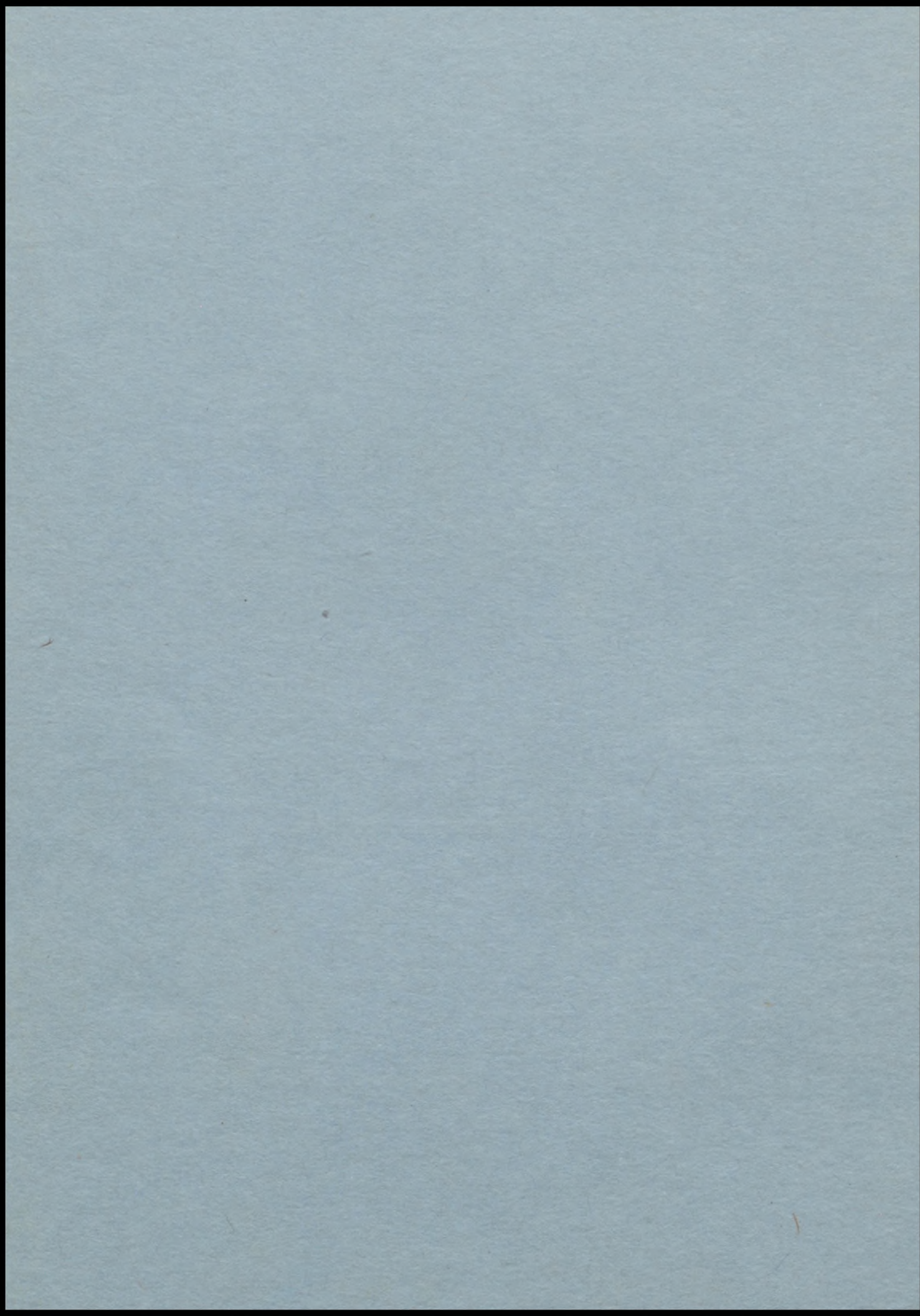
DATE	WITH	PLACE	C. H. S.	OPPS
Dec. 16	Easton	There	5	22
Jan. 6	Easton	Here	14	18
Jan. 13	Plattsburg	Here	20	12
Jan. 20	Savannah	There	9	20
Feb. 6	Plattsburg	There	15	11
Feb. 10	Chillicothe	There	12	20
Feb. 17	Savannah	Here	8	21
Feb. 24	Chillicothe	Here	7	4
			90	128

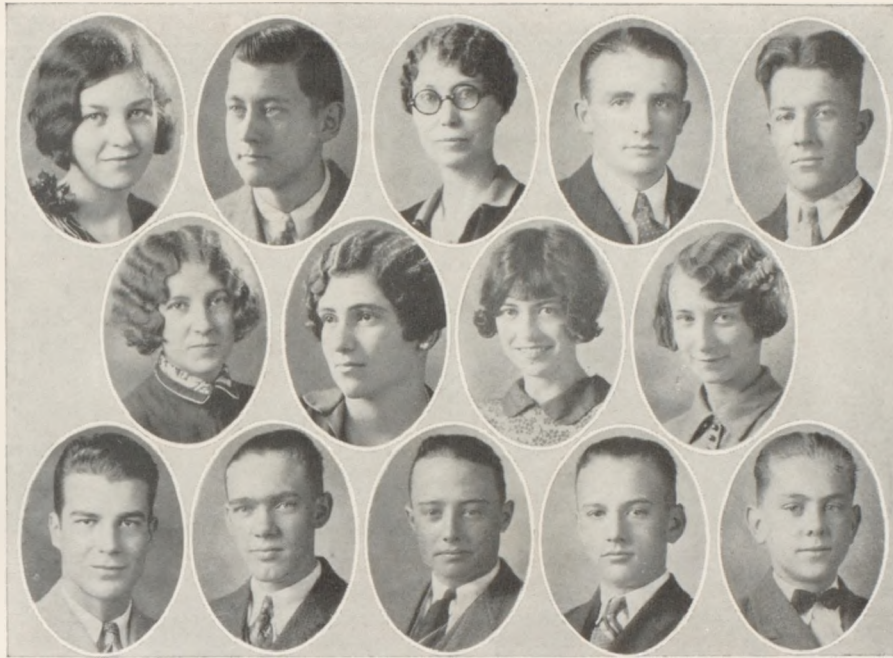






 **WHITE CAPS** 

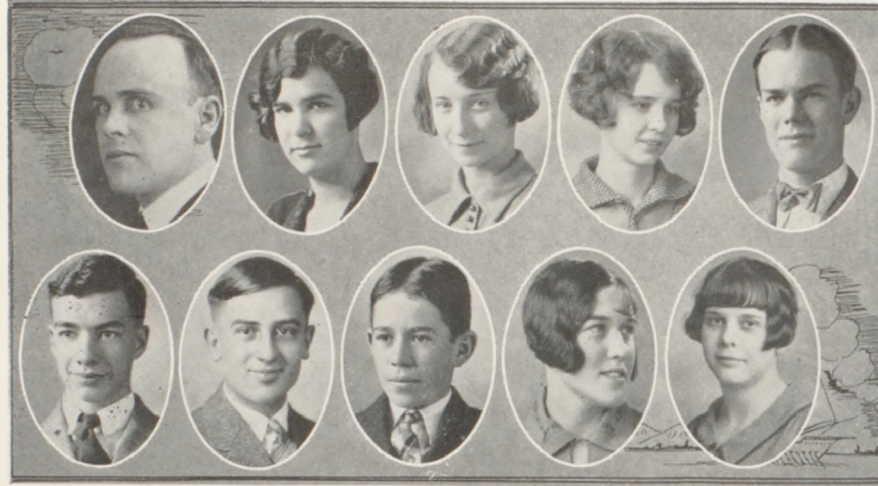




Tank Staff

Editor-in-Chief.....	Irene Shirts
Associate Editor.....	Wayne Mayes
Business Manager.....	Moss Auten
Asst. Business Manager.....	Kermit Knoch
Sports Editor.....	Leland Warner
Assistant Sports Editor.....	R. Bowman
Exchange Editor.....	Mildred Schleicher
Feature Editor.....	Helen Schneider
Joke Editor.....	Harold Sloan
Reporters.....	{ Esther Shaw, Carroll Gillis Wilford Crawford, Margaret Maxwell Marjorie Simmons, Burlah Bird
Faculty Advisor.....	Miss Mary Klepper

Debate



Top Row, Left to Right: Mr. Osborn, Coach; Miss Cameron, Sponsor of Forensic Club; Margaret Maxwell, Captain; Louise DeShon, Clair Luce

Second Row, Left to Right: Glenn Peters, Eugene Trice, Billy Quigley, Dorothy Crawford, Louise Gilliland

Opponent	Side	C. H. S. Team	Decision
Maysville	Negative	DeShon-Crawford	Won
Amity	Negative	DeShon-Crawford	Lost
Liberty	Negative	DeShon-Crawford	Lost
Winston	Negative	Peters-Trice	Won
Excelsior Springs	Affirmative	Maxwell-Quigley	Won
Osborn	Affirmative	Maxwell-Quigley	Won
Maysville	Affirmative	Maxwell-Quigley	Won
Easton	Affirmative	Maxwell-Quigley	Won
Smithville	Affirmative	Maxwell-Quigley	Lost
Richmond	Affirmative	Maxwell-Quigley	Non-Dec.
Higginsville	Affirmative	Maxwell-Quigley	Lost
Lexington	Affirmative	Maxwell-Quigley	Non-Dec.
St. Joe Central	Affirmative	Maxwell-Quigley	Won

(N. W. Mo. Champions)

The work in debate this year has been outstanding in these respects. A larger number of students took part in these interscholastic contests and more decisions were won than is shown by the records of any former year. More interest in this activity was shown by the student body and by patrons and friends of the school than has formerly been shown. The large crowds which attended the debates held at home was evidence of this fact. Financially the work was a success, since the season closed with practically all the expenses met by the door receipts.

Prof. Paul Osborn, who coached again this year, is to be highly commended upon the results of his efforts with the teams and the interest he has stimulated in debate.

Hi-Y



First Row, Left to Right: Knoch, Caldwell.

Second Row: Warner, Luce, Mr. Thomas, Supt. Elliott, Mr. Gross, Mr. Williams, Mayes

Third Row: Peters, Gilliland, Ensign, Bryant, Auten, Althouse, Garvin.

Other members were added in addition to the charter members to the extent of thirty-two.

The Hi-Y held their meetings at the noon hour every Tuesday. Luncheons were served by the Home Economic class, at the Blue Room, and at the Park Cafe. Talks were given by business men, and school problems were discussed. Representative were sent to various conferences throughout the country.

The Father and Son Banquet was served during Father and Son Week, and a Mother and Son Banquet was served the week of Easter.

As an organization they put forth the main idea of Clean Speech, Clean Living, and Clean Sportsmanship.

OFFICERS

Edgar Bryant, Jr.....	President
Wayne Mayes.....	Vice-President
Leland Warner.....	Secretary-Treasurer



GIRLS' CHORUS

First Row, Left to Right: Director Williams, Williams, Brown, Porter, Shaw, Gilliland, Wamsley, Biggerstaff, Holoday, Brower, pianist.

Second Row: Wise, Pittman, Davis, Cline, Frazier, Buckley, Hancock, Sweat, Brockman

Third Row: Kelsey, Gale, Baldwin, Wiley, Crowe, Clayton, Rowell, Cline, Hord, Berten, Knoch

The activity of the Senior High Girls Glee Club continues to grow. Thirty members compose the club this year. As usual, the club was conducted as a class and met twice a week throughout the year.

Accompanist for first semester—Aileene Brower,

Accompanist for second semester—Mildred Kelsey.

Cameron High ought to be proud of such organizations that show her true spirit of loyalty and high standards. It might be said of them:

"I have sung many songs,
But never a one so gay,
For they sing of what the world will be
When the years have died away."



GIRL'S QUARTET

A quartet was chosen from the girls glee club. It was composed of:

Mildred Kelsey.....	First Soprano
Katherine Gale.....	Second Soprano
Esther Shaw.....	First Alto
Aileene Brower.....	Second Alto

The quartet was well accompanied by Lois Bryan.

AN ODE TO MUSIC

"O Music, sphere-descended maid,
Friend of Pleasure, Wisdom's aid,
Why, goddess, why, to us denied,
Lay'st thou thy ancient lyre aside?
As in that lov'd Athenian bow'r
You learn'd an all-commanding pow'r,
Thy mimic soul, O nymph endear'd
Can well recall what then it heard.
Where is thy native simple heart,
Devote to virtue, Fancy, Art?
Arise as in that elder time,
Warm, energetic, chaste, sublime!
Thy wonders, in that godlike age,
Fill thy recording sister's page—
'Tis said, and I believe the tale,
Thy humblest reed could more prevail,
Had more of strength, diviner rage,
Than all which charms this laggard age,
Ev'n all at once together found,
Caecilia's mingled world of sound.
O bid our vain endeavors cease,
Revive the just designs of Greece,
Return in all thy simple state,
Confirm the tales her sons relate!"



BOY'S GLEE CLUB

First Row, Left to Right: Williams, Foster, Crawford, Frazier, Mullenix.

Second Row: Rolfe, Russell, Kelsey, Pianist, Director Williams, Bender, David, F. Howard, R. Howard, Van Winkle, Baker, Sheldon, Allen, Elmore

Only four boys of the 1927 club were in school again this year to form a foundation for a new club. Twelve new members were added.

Under the direction of Mr. Williams the club was brought to its best. The club met regularly as a class twice a week and was accompanied by Mildred Kelsey.

"Music hath the charms to soothe
Man or beast in any mood;
It paints the world with varied hues
And for our souls is Heaven's food."





BOYS' QUARTET

Cameron High Boys' Quartet was organized the first semester of school. Mildred Kelsey was accompanist.

James Russell.....	First Tenor
Wilford Crawford.....	Second Tenor
Jesse Foster.....	Baritone
Earl Mullenix.....	Bass

MIXED QUARTET

As Duke Orlando in Twelfth Night expressed it, "If music be the food of love, play on." The mixed quartet has made music a food for more than love, however, and through continued effort has established itself as an alive and active organization of the school. And for the first time in many years a mixed quartet was organized.

The quartet was formed the first semester with the following members:

James Russell.....	Tenor
Mildred Kelsey.....	Soprano
Aileene Brower.....	Alto
Earl Mullenix.....	Bass

The second semester Jesse Foster sang the bass in this organization. Several splendid programs were given during the year. The quartet was well accompanied by Wilford Crawford.



"BELLE OF BARCELONA"

Each year the Senior High Boys' and Girls' glee clubs of Cameron High together present an operetta. This year the operetta presented was "The Belle of Barcelona."

Margarita	Mildred Kelsey
Harold Wright (Hal).....	Paul Allen
Patrick Malone (Pat).....	Earl Mullenix
Miss Mathilda Ayers.....	Aileene Brower
Francisco de la Vega.....	Wilford Crawford
Emilie	Russell Packham
Mercedes	Kathrine Gale
Senor de Montero.....	Ward L. Sheldon
Senora de Montero.....	Esther Shaw
Pedro	Russell Williams
Dona Marcela.....	Virginia Porter
Dona Anita.....	Guenaveve Knoch
Dona Maria.....	Helen Schneider
Don Juan.....	James Russell
Don Jose.....	Jesse Foster



THE ORCHESTRA

The Orchestra, having a regular time to practice each day, has made very satisfactory progress under the direction of Mr. Thomas. Although having an imperfect instrumentation, the orchestra has rendered some programs which have been much enjoyed. Two concert orchestras were selected which made public appearances at numerous assemblies, school plays, the operetta, lodges, banquets, etc. The instrumentation is as follows:

VIOLINS

Clair Luce	Maurice Cater
Alma Frazier	Ross Kelsey
Dennis Dorsey	Blanche Crow
Elizabeth Shackelford	Glenn Peters
Frances Wright	

SAXOPHONES

Richard Bowman	Donald Eaves
William Eaves	John Hunter

CLARINETS

Billie Quigley	Everett Gillis
----------------	----------------

CORNETS

Carroll Gillis	Ray McCemmas
Kermit Knoch	Norman Neil
Adah Moore	Louise Shirts
Lester Shell	Glen Ed Haley
Norwood Marquis	Mauvern Hindman

TROMBONES

Donald Gillis	Everett Watson
Glenwood Gilliland	John Groebe

Drums	James Russell
Bass	Olin Johnson

PIANO

Lois Bryan	Aileen Brower
------------	---------------



CONCERT ORCHESTRA

Since it was not always practicable to use the full orchestra for programs and special concerts, such as at assemblies, plays, etc., the major part of this work has developed upon the concert orchestra. The members of this organization were picked for their especial fitness and the class of music rendered has bespoken their merit.

An augmented concert orchestra of twenty-four pieces competed in the County meet and again won the cup, for the third and final year.

The instrumentation of the first concert orchestra is as follows:

- | | | |
|-------------------|--------------|----------------|
| VIOLINS | | |
| Maurice Cater | Clair Luce | Ross Kelsey |
| SAXOPHONES | | |
| Richard Bowman | John Hunter | Donald Eaves |
| Clarinet | | Billie Quigley |
| TROMBONE | | |
| Donald Gillis | | Dean Rolfe |
| CORNETS | | |
| Carroll Gillis | Kermit Knoch | Ray McCommas |
| Bass | | Olin Johnson |
| Drums | | James Russell |
| Piano | | Lois Bryan |



CORNET QUARTET

This organization was formed early in 1926 under the leadership of Carroll Gillis. The members convened of their own volition, and their work has been the product of their own initiative. They have entertained at assembly several times. However, their concerts have not been confined solely to the High School, as many organizations and localities have been favored with their talent. The four are members of the Senior class. Two of them, Carroll Gillis and Ray McCommas, have won first place in the N. W. Missouri contest. The two remaining places in the ensemble are capably filled by two excellent musicians, Adah Moore and Louise Shirts.

"Let me go wher'er I will,
I hear a sky-born music still;
It sounds from all things old,
It sounds from all things young.
From all that's fair, from all that's foul,
Peals out a cheerful song."

—Emerson.

**RESULTS OF THE CLINTON COUNTY, LIBERTY, MARYVILLE
AND MISSOURI WESLEYAN COLLEGE CONTESTS**

First comes the Clinton County contest held April 13, at Cameron. Wilford Crawford, first place in piano. Cameron, first place in mixed quartet, (Mildred Kelsey, Aileen Brower, James Russell, Jessie Foster, and Wilford Crawford, accompanist.) Wilford Crawford, first place in voice. Cameron, first place in glee club, (girls). Kermit Knoch, first in oration. Kermit Knoch, first in cornet solo. Guenavere Knoch, second in declamation.

* *

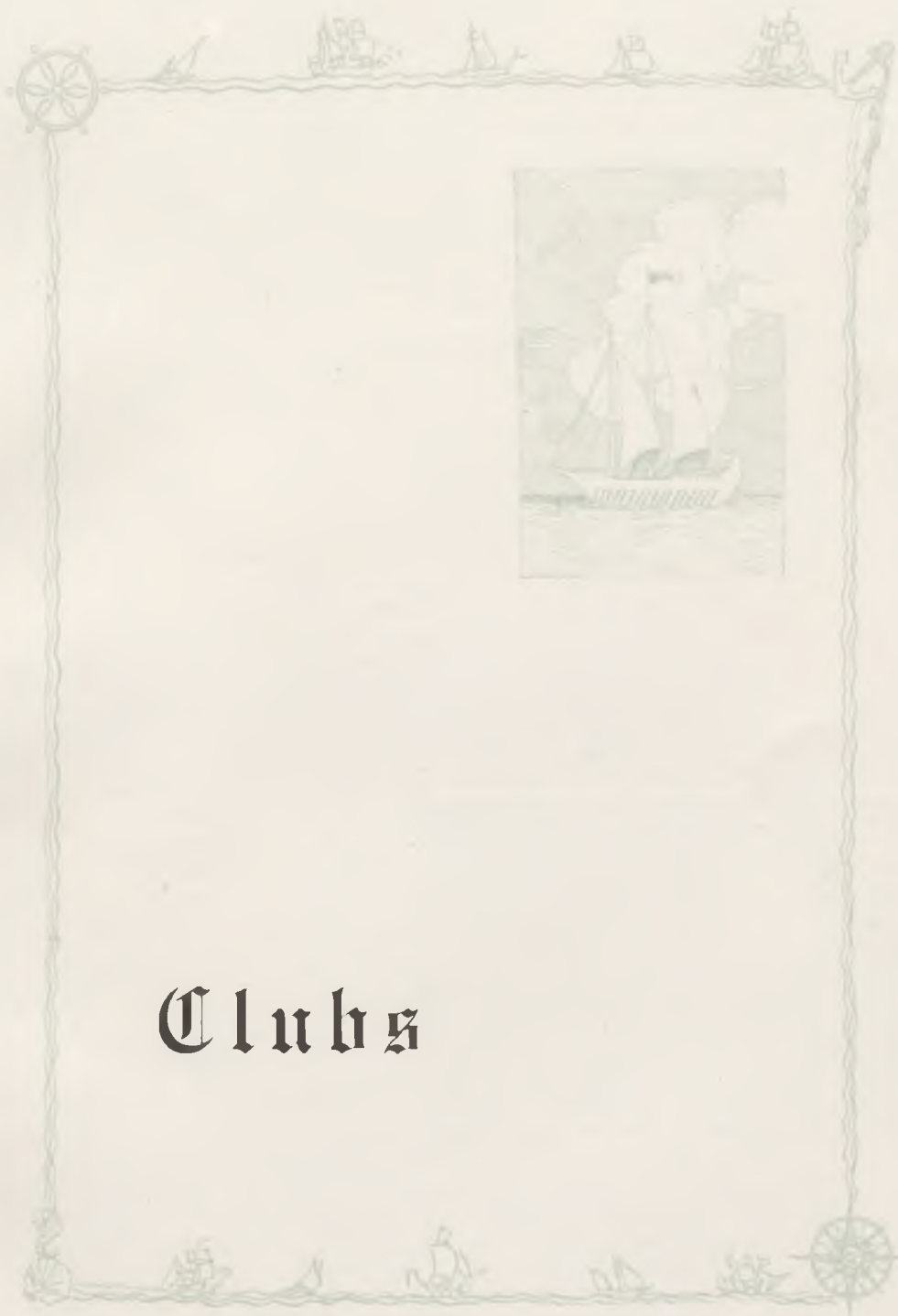
William Jewell Contest, held at Liberty, April 19. Vocal Solo, Mildred Kelsey, third place. Piano Solo, Lois Bryan, third place. Mixed Quartet, (Mildred Kelsey, Aileen Brower, James Russell, Jessie Foster, and Wilford Crawford, accompanist), second place. Extemporaneous Speaking, (girls), Margaret Maxwell, second. Extemporaneous Speaking, (boys), Lester Shell, second place.

* *

Maryville Contest held April 26, 27, 28. Violin Solo, Maurice Cater, first place. Cornet Solo, Kermit Knoch, first place. Piano Solo, Lois Bryan, tied for third place.

* *

Missouri Wesleyan College Contest held May 11, at Cameron. Girls Quartet, (Mildred Kelsey, Katherine Gale, Esther Shaw, Aileene Brower, and Lois Bryan, accompanist), first place. Piano Solo, Aileene Brower, first place. Violin Solo, Ross Kelsey, second place. Oration, Wilford Crawford, third place. Extemporaneous Speaking, Margaret Maxwell, first place.



Clubs

THE ALCHEMISTS

OFFICERS

President Carroll Gillis
 Vice President.....Dennis Dorsey
 SecretaryAdah Moore
 Sponsor Mr. Thomas



MEMBERS

Kermit Knoch	Vera Baker
Wayne Mayes	William Ensign
Mildred Schleicher	Adah Moore
Maurice Cater	Hugh Brown
Dennis Dorsey	Olive Kettenring
Kenneth Stafford	Mable Waugh
Lavon Althouse	Ruth Shackelford
James Russell	Doral Shaw
Paul McDaniel	Beulah Brown
Hadley Kimes	Donald Gillis
Carroll Gillis	Richard Bowman
Marjorie Simmons	



STENO-STATIC

OFFICERS

PresidentEdgar Bryant, Jr.
 Vice President.....Ward L. Sheldon
 SecretaryEvelyn Leask
 Reporters--Martha Buckley, Helen
 Schneider.
 Sponsor Miss Wilson

MEMBERS

Harold Sloan	William Mallory
Lois Bryan	Lewis Christian
Charles Penny	Eugene Ensign
Claude Kanan	Odus Whitaker
Quintus Miller	Almina Glossip



VOCATIONAL GUIDANCE

OFFICERS

President Irene Shirts
Secretary & Treasurer.....Moss Auten
Sponsor Mrs. Warner

MEMBERS

Louise Shirts
Moss Auten
Frances Wright
Helen Chivens
Irene Shirts
Roberts Middaugh
Ray McCommas
Howard Bender
Clyde Garvin
Clarence Zimmerman
Lowell Folsom
Eugene Trice
Marcus Staples
Lloyd Parks
Dale Constance

HOME ECONOMICS

OFFICERS

President Frances Watson
Secretary Deborah Baldwin
Sponsor Miss Hansel



MEMBERS

Muriel Davis
Reve Fite
Louise Hord
Winnigene Kemper
Stella Norwood
Hazel Shackelford
Leona Smith
Grace Wiley
Vera Wise
Creta Alexander

NATURE STUDY

Sponsor Mr. Gross



MEMBERS

Glenn Baker
 Jerry Brammer
 Oliver Brooks
 Paul Cutler
 Ralph Entrikin
 Donald Gills
 Glen Ed Haley
 Joe Keltner
 Quincy Kemper
 Justin King
 Clair Luce
 C. A. O'Neal

Glenn Peters
 Laurence Phelps
 Billy Quigley
 Ralph Riley
 Earl Upchurch
 Walter Steadman
 Henry Jukes
 Jewell Streu
 Leland Brand
 Forest Simpson
 Paul Sloan



MUSIC

OFFICERS

President Aileene Brower
 Secretary Lois Williams
 Music Critic..... Mildred Kelsey
 Sponsor Mr. Williams

MEMBERS

Aileene Brower
 Arnold Brower
 Charles Caldwell
 Catherine Cline
 Phillip David
 John Elmore
 Jesse Foster
 Katherine Gale

Frank Howard
 Mildred Kelsey
 Mary Meek
 Norman Neil
 Evelyn Rowell
 Frazier Staples
 James VanWinkle
 Lois Williams
 Robert Howard

**ALPHA KAPPA
SELF-IMPROVEMENT CLUB**

OFFICERS

President Wilford Crawford
 Secretary Dorothy Calhoun
 Sponsor Belle Pollard



MEMBERS

Donald Baker	Dorothy Calhoun	Glenwood Gilliland
John Baker	Anna Carroll	Louise Gilliland
Wesley Ballinger	Hazel Clayton	Virginia Holland
Burlah Bird	Dorothy Crawford	Opal Hancock
Glenn Bratcher	Wilford Crawford	Pearl Kagav
Jewell Brown	Blanche Crowe	Verl King
Mildred Brown	Franklin Elston	Louise Berten
Mary Byers	Alma Frazier	Durl Rolfe
	Russell Packham	



**KAPPA ZETA
SELF-IMPROVEMENT CLUB**

OFFICERS

President Russell Williams
 Secretary Margaret Maxwell
 Sponsor Margaret Cameron

MEMBERS

Frances Plummer	Dean Rolfe	Leland Warner
Lorene Kanan	James Scanmako:n	Guenevero Knoch
Marion Lyle	Rolland Selle	Leland Ryan
Mae Morton	Esther Shaw	Katherine Swords
Helen Nelson	Lester Shell	Ruth Reed
Elizabeth O'Connor	Amelia Theilmann	Elizabeth Whitaker
Kenneth Price	Laverne Williams	Earl Mullenix
Virginia Porter	Emma Witt	Dick Arnold



TEACHER TRAINING

OFFICERS

President Olive Kettenring
 Secretary Vera Baker
 Treasurer Alma Frazier
 Sponsor Mrs. Warner

MEMBERS

Opal Hancock	Vera Baker
Leona Smith	Mable Waugh
Louise Berten	Olive Kettenring
Lorene Kanan	Era Sloan
Beulah Brown	Adah Moore
Grace Wiley	Alma Frazier
Martha Holtzapple	Hazel Clayton
Muriel Davis	Alma Gibson
Marion Lyle	Louise Hord
Marcus Staples	Virginia Holland

MISSOURI "M" CLUB

OFFICERS

President Era Sloan
 Secretary Louise DeShon
 Sponsor Miss Cook

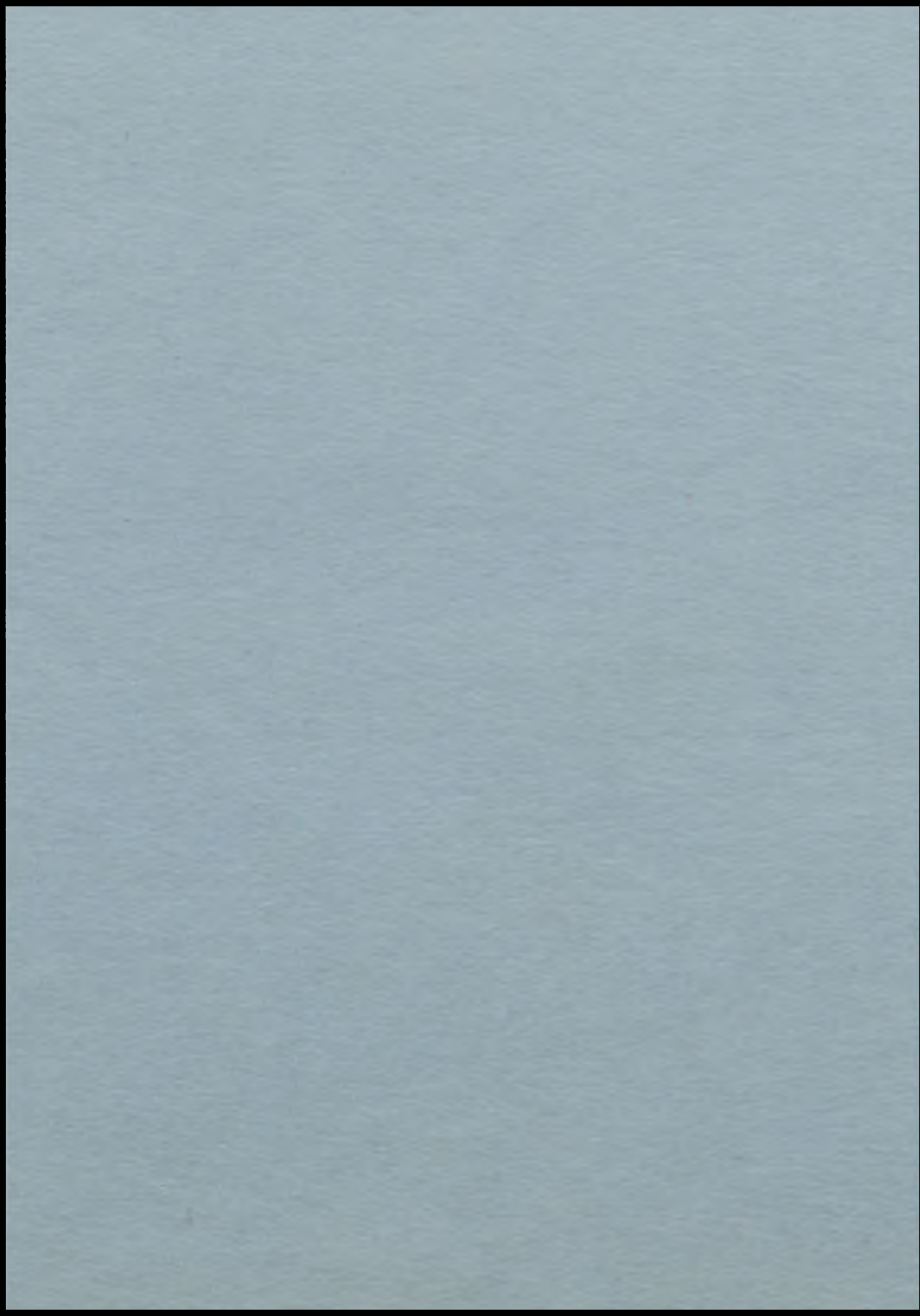


MEMBERS

Bernice McKenzie	Reba Biggerstaff
Eva Temple	Florence Haley
Freda Mae Cline	Ethelyn Ensign
Dorothy Parks	Olive Whitaker
Lorna Brockman	Blanche Cummings
Ruby Simpson	Orpha Sloan
Nellie Simpson	Myrtle Hancock



 APPRENTICES 



JUNIOR HIGH FACULTY



IRENE MOON

Student Missouri Wesleyan College and Northwest Missouri State Teachers College; Cameron High School, 1927-28.

English, Sponsor 7th grade.



ESSIE BING

Student Northwest Missouri State Teachers College and Missouri Wesleyan College, Extension work, Kirksville State Teachers College, Cameron Public Schools, 1918-25. Cameron Junior High School, 1926-28.

Mathematics, 8th Grade Sponsor.



MRS. DELLA ALLEN

Student Kirksville Normal, 1902-07; A. B., Missouri Wesleyan College, 1927; Instructor, 10 years in Rural Schools; McKinley 1925-27; Cameron High School 1928.

Penmanship, Spelling, Sponsor 8th grade.



MARENE ELLIOTT

Student Colorado Teachers College; A. B., Missouri Wesleyan College 1925; Instructor, Winston, Missouri, 1923-27; Cameron High School 1928.

Social Science.

THIRD YEAR



First Row—Left to Right

Grace Rice	Alice VanGundy
Elsie Brown	Mary Hales
Annabelle Jukes	

Second Row

Adah Rice	Ruth Crow
Evelyn David	Endora Sullivan
Virginia Holtzapple	Marian McClean
Helen Shackelford	Virginia Jackson

Third Row

Ross Kelsey	Basil Bell
Olin Akey	Harold Leach
Leslie Powers	Charles Ellwood
Leroy Pryor	Homer Wylie

THIRD YEAR



First Row—Left to Right

Ernest Lewis Glenn Johnson John Haddon

Second Row

Mildred McCollough Helen Berten
Leona Logue Eloise Wiley
Christine Potter Edith Easter

Third Row

Mildred DeHaven Florence Margaret Dorsey
Martha Marcum Nell Hinderks
Marlene Dalke Irene Madison
Pauline Burgess

Fourth Row

Boyd Baker Byron Pendleton
Marvin Beechner Victor Williams
Laurence Kenney Alvin Packham
Olin Johnson Guy Livingston

THIRD YEAR



First Row—Left to Right

John McAnaw C. I. Ward Clarence Mullenix

Second Row

Francis Murphy	Velva Newby
John Easter	Ruth Baker
Chester King	Norwood Marcus
Inez Myers	Paul Beechner

Third Row

Fred Hancock	Fred Cooper
William Eaves	Junior DeShon
Everett Watson	Woodrow Rider
Benjamin Porter	Hubert Smith

THIRD YEAR



First Row—Left to Right

Earle Jhonson Jess Morehouse Glenn Flanders

Second Row

James Morton Catherine McVicker
Erston Peters Cleta Newby
Mary Grinstead Carolyn Howard

Third Row

Mabel Riley Erma Schofield
Mary Dodson Mary Elizabeth Allen
Virginia Gregory Lois Ballinger
Lydia Flanders Ruth Montz

Fourth Row

James Williams Lynn Upchurch
Dale Graham Sidney Ensign
Arthur Burkett J. C. Woner
Delmer Wayman Jimmie Williams
William Wells

SECOND YEAR



First Row—Left to Right

Lorene Cummings

Mary Helen McGee

Second Row

Opal Camby

Gladys Karriher

Hazel Fry

Alice Howard

Grace Park

Gladys Bower

Marie Gall

Third Row

Curtis Lohman

Earl Davis

Everett Gillis

Walter Howard

Ford Anderson

John Hunter

Lawrence Flanders

SECOND YEAR



First Row—Left to Right

Carl Payne Virginia Mae Klepper Wendell Folsom

Second Row

Donald Shaw James Ellis
Robert Marcum Manvern Hindman
R. L. Stren Wayne Simmons
Jimmy Cathcart

Third Row

Marjorie Johnson Dorothy Cater
Elizabeth Shackelford Lois Cline
Frances West Edna Mae Urban
Margaret Shaw Jean Grantham

FIRST YEAR



First Row—Left to Right

Glenn Huey Charles Carroll

Second Row

Homer Lee Wood Juanita Kind
Lucile Moyer Lorena Larrabee
Helen Corn Gordon Neill

Third Row

Bell Marcum Marjorie Temple
Ruth Gibson Nell Zimmerman
Kathryn Baker Dorothy Peters
Coleen Howard

Fourth Row

Billy Dick McCallum Kenneth DeShon
Woodrow Bryant Alvin Camby
Marian Wiley Claude Dorsey
Merlin Moore

FIRST YEAR



First Row—Left to Right

Elmer Peterson	Wanda Poston
Gladys Kemper	Norma Bassett
Laverne Peck	Donald Kettenring

Second Row

Grace Simpson	Bernice Sloan
Helen McComb	Ruby Holoday
Dorothy Allen	Louise Clevenger
Audra Richards	Ailene Ireland

Third Row

Kenneth Jones	Jimmo Myers
Donald Wiley	Carton Emory
Harold McCulley	Newell Daniels
Imnett Hahn	Gerald Baker

FIRST YEAR



First Row—Left to Right

Eldo Easter	Cecil Powers
Earl McCord	James Bing
	Frederick Myer

Second Row

Laverne Stevens	Lois Ensign
Virginia Lee	Evelyn Goodson
Minnie Rice	Virginia Brown
	Alma Bryant

Third Row

Harold Baird	David Wells
Ward L. Stade	Rolland Karriher
Clarence Smith	Earnest King
Carl McDaniel	Beebe Brower
	Lloyd King



JUNIOR HIGH GIRLS' CHORUS

First Row, Left to Right: Director Williams, Urban, Sloan, Shackelford, Shaw, Johnson, Klepper, West, Cline, Gibson, Kemper, Bryan, Pianist

Second Row: Goodson, Richards, Allen, Zimmerman, Wener, Gaines, Camby, Holaday

Third Row: Gall, Jones, Bryant, Ireland, Burgess, Shackelford, Dalke, Simpson, Howard, Baker

The Junior High Girls' Chorus spent a most profitable year. The chorus consisted of twenty-nine voices and sang two part music. It met twice a week as a regular class during the entire year.

The chorus was nicely accompanied by Lois Bryan, with Edna Mae Urban, reader.



THIRD YEAR

Name Various Values
 Sponsor Miss Adams



Mary Allen
 Mary Grinstead
 Mary Dodson
 Mary Hales
 Virginia Jackson
 Anne Belle Jukes
 Edith Easter
 Lena Staples
 Audrey Staples
 Caroline Howard
 Marlene Dalke
 Florence Dorsey
 Pauline Burgess
 Mildred DeHaven
 Lois Ballinger
 Evelyn David
 Helen Berten
 Elsie Brown
 Virginia Holtzapple
 Ruth Brown

Nell Hinderks
 Lydie Flanders
 Clyde Lacore
 Paul Beechner
 Chester King
 Sidney Ensign
 John Hadden
 Junior DeShon
 Marvin Beechner
 Glenn Flanders
 Armour Bonar
 Olin Johnson

Charles Ellwood
 Olin Akey
 Ross Kelsey
 Arthur Burkett
 Laurence Kenney
 William Eaves
 John Easter
 Basil Bell
 Glenn Johnson
 Dale Graham
 Earl Johnson
 Boyd Baker



THIRD YEAR

Sponsor Miss Bing

Velva Newby
 Ruth Crowe
 Christine Potter
 Ada Rice
 Grace Rice
 Mable Riley
 Irma Scofield
 Helen Shackelford
 Eudora Sullivan
 Alice VanGundy
 Eloise Wiley
 Virginia Gregory

Homer Wiley
 Victor Williams
 Harold Leach
 Norwood Marcus
 John H. McAnaw, Jr.
 Jess Morehouse
 James Morton
 Clarence Mullenix
 Alvin Packham
 Freddie Hancock
 Erston Peters
 Benjamin Porter

Mary Macey
 Irene Madison
 Martha Marcum
 Marion McClean
 Mildred McCollough
 Catherine McVicker
 Ruth Montz
 Inez Myers
 Leslie Powers
 Leroy Pryor
 Woodrow Rider
 Hubert Smith
 Lynn Upchurch
 C. I. Ward, Jr.
 Everett Watson
 Delmar Wayman
 William Wells
 James Williams
 J. C. Woner
 Francis Murphy



SECOND YEAR

Sponsor Miss Kemper

- | | | |
|----------------|-------------------|-----------------|
| Leslie Wood | Verl Kettingring | Levi Ensign |
| R. L. Streu | John Hunter | Harold Ellwood |
| Wayne Simmons | Walter Howard | James Ellis |
| Donald Shaw | Manvern Hindman | Earl Davis |
| Carl Payne | Hubert Harris | Leo Clevenger |
| Billy Norwood | Everett Gillis | Jimmie Cathcart |
| Robert Marcum | Wendell Folsom | Ralph Camby |
| Curtis Lohman | Lloyd Flanders | Ford Anderson |
| Don Livingston | Laurence Flanders | |

SECOND YEAR

Sponsor Miss Elliott
 Name W. H. O.



- | | | |
|------------------|-----------------------|--------------------|
| Lois Cline | Grace Parks | Gladys Bower |
| Vera Constance | Elizabeth Shackelford | Lorene Cummings |
| Hazel Fry | Margaret Shaw | Elizabeth Flanders |
| Marie Gall | Edna Mae Urban | Gladys Karriher |
| Jean Grantham | Frances West | Mary Helen McGee |
| Alice Howard | Oletha Woner | Nantha Payne |
| Marjorie Johnson | Opal Camby | Lorene Palmer |
| Virginia Klepper | June Etta Gaines | Helen Cox |

FIRST YEAR

Name J. U. G.
Sponsor Miss Moon



Dorothy Allen
Katherine Baker
Norma Bassett
Virginia Brown
Alma Bryant
Louise Clevenger
Helen Corn
Lois Ensign
Ruth Gibson
Evelyn Goodson
Ruby Holoday

Coline Howard
Heen Ireland
Gladys Kemper
Juanita King
Lillie Lee
Virginia Lee
Belle Marcum
Helen McComb
Lucille Moyer
Laverne Peck
Dorothea Peters

Wanda Poston
Minnie Rice
Adra Richards
Ella Simms
Grace Simpson
Bernice Sloan
Marjorie Temple
Wilma Phelps
Nell Zimmerman



FIRST YEAR

Sponsor Mrs. Allen

Beebe Brower
Olin Coen
Newell Daniels
Emmet Hahn
Donald Kettenring
Earl McCord
Elmer Peterson
Wardell Stade
Donald Wiley
Merlin Moore
Harold Baird
James Bing

Woodrow Bryant
Alvin Camby
Charles Carroll
Claude Dorsey
Eldo Easter
Kenneth Jones
Rolland Karriher
Earnest King
Lloyd King
Frederick Maier
Jimmo Myers
Carl McDaniel

Harold McCulley
Billie McCallum
Gordon Neil
Leonard Packham
Cecil Powers
Clarence Smith
Lavern Stephens
Marion Wiley
Homer Lee Wood
Leslie Wood

JUNIOR HIGH CELEBRITIES

Queen of Hearts.....	Ruby Holoday
Kind of Diamonds.....	Gordon Neil
Ace of Athletes.....	Glenn Flanders
Aphrodite	Nell Zimmerman
Dumb Dora	Marian McClean
Joker.....	Homer Wylie
Asphalt Arab	Olin Johnson
Snap Dragon	Miss Bing
Goofie Gertie	Evelyn David
Ideal Couple.....	(Pauline Burgess / Glenn Flanders
Bashful Bozo	Marian Wylie
Pessimist	Miss Bing
Optimist	Marjorie Temple
Hot Esther Dispenser.....	Ruth Montz
Last Rose of Summer.....	Christine Potter
Third Year King.....	Basil Bell
Third Year Queen	Marion McClean
Second Year King	John Hunter
Second Year Queen.....	Edna Mae Urban
First Year King.....	Junior DeShon
First Year Queen.....	Bernice Sloan

CONSENSUS OF OPINION

Queen of Hearts.....	Virginia Holland
King of Diamonds.....	Russell Packham
Ace of Athletes.....	Hadley Kimes
Dumb Dora	Emma Witt
Aphrodite	Virginia Holland
Joker	Dick Arnold
Asphalt Arab	Wayne Mayes
Snap Dragon	Wilson Thomas
Goofie Gertie	Blanche Cummings
Ideal Couple	{ Virginia Porter } Wilford Crawford
Bashful Bozo	Lavon Althouse
Pessimist	Miss Klepper
Optimist	Dick Arnold
Hot Ether Dispenser	Dick Bowman
Last Rose of Summer.....	Blanche Cummings
Senior King	Harold Sloan
Senior Queen	Lois Bryan
Junior King	Paul McDaniels
Junior Queen	Louise DeShon
Sophomore King	Billie Quigley
Sophomore Queen	Florence Haley

High Lights of the Year

SEPTEMBER

- Sept. 6. School opens. "My!" but I'm glad to see you!"
- Sept. 13. Class officers and sponsors chosen.
- Sept. 16. Teacher Training Club organized.
- Sept. 19. Orchestra gives first assembly concert.
- Sept. 21. Senior picnic at Schlorff's woods.
- Sept. 23. First football game, Dragons trim Lathrop.
- Sept. 27. Debate team organized, Mystic officers chosen.

OCTOBER

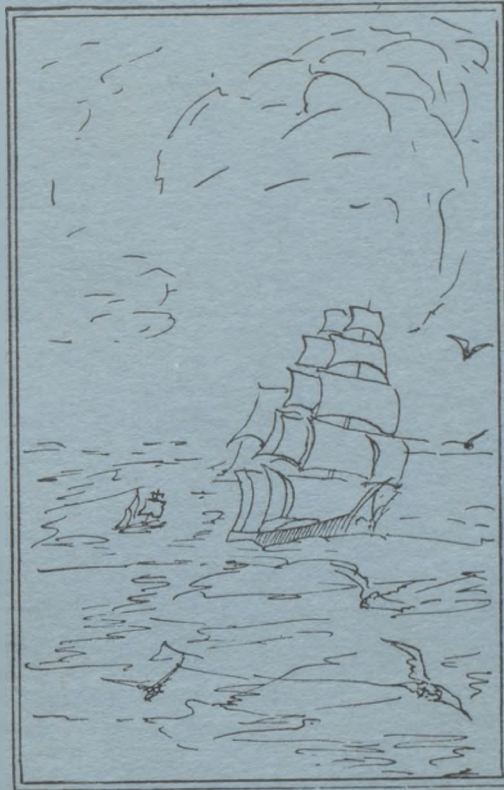
- Oct. 7. Excelsior Springs defeats Cameron 6 to 0.
- Oct. 10. "M" Club organized, first number lyceum course, Dragons victorious over Lafayette, Senior program.
- Oct. 11. Juniors win Tank contest.
- Oct. 21. Hi-Y Club organized, Central defeats Dragons.
- Oct. 25. Dragons defeat Maysville, Senior rings decided on. Faculty picnic.
- Oct. 27. First pictures for annual taken at Brown's, Seventh grade picnic.
- Oct. 29. Old H. S. song revived and taught to students.

NOVEMBER

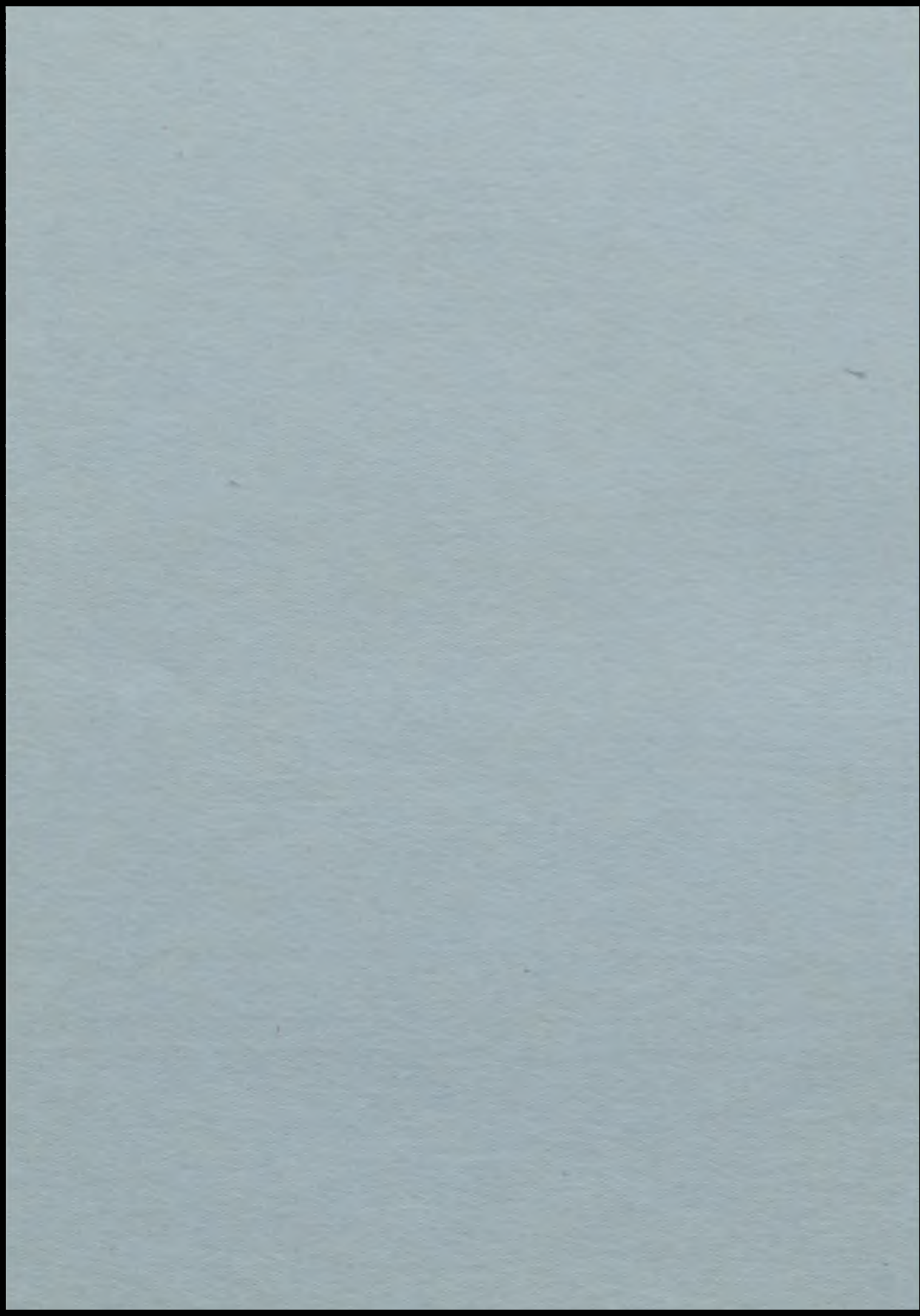
- Nov. 4. Dragons defeat Chilli, Junior High Forensic Club organized.
- Nov. 11. "Dad's Day" at Trenton game. Dragons are victorious.
- Nov. 16. Vocational Agriculture visits American Royal.
- Nov. 22. C. H. S. benefit show at the Senate, "The Moon of Israel."

DECEMBER

- Dec. 1. Cameron wins first debate from Maysville.
- Dec. 8. Operetta "Bell of Barcelona."
- Dec. 16. Dragonettes lost to Easton. Some cold!
- Dec. 20. Home Ec. holds open house.
- Dec. 22. Junior party in basement.



THE ROLLING DEEP



HIGH LIGHTS OF THE YEAR

JANUARY

- Jan. 3. Football banquet.
- Jan. 6. Renaissance of C. H. S. spirit. Juniors and Seniors tie at 104%. Double-header game, Hamilton and Easton.
- Jan. 9. Debate team victorious over Winston.
- Jan. 16. Teacher Training Club has tacky party.
- Jan. 20. Dragonettes win over Plattsburg.
- Jan. 20. Lafayette defeats Dragons.
- Jan. 23. Cameron debate team defeats Easton.
- Jan. 26. Dragons defeat Hornets.
- Jan. 27. Dragons defeat Trenton Bulldogs.

FEBRUARY

- Feb. 1. Dragons were defeated by Kidder Junior College.
- Feb. 3. Hobo day, oh the boys! Second team defeats Turney.
- Feb. 3. Dragons defeat Chilli again.
- Feb. 6. Dragonetts defeat Plattsburg, and Plattsburg defeats Dragons.
- Feb. 9. Banquet given debate club.
- Feb. 10. Dragonetts win over Hornets. Dragons lose to Lafayette.
- Feb. 13. Smithville defeats Cameron debaters.
- Feb. 14. Dragonetts win last game over Chilli.
- Feb. 15. Students choose Irene Shirts for "Mystic Queen."
- Feb. 16. New Clubs organized.
- Feb. 24. - 25 Tournament. Cameron defeats Faucett, Easton. Plattsburg defeats Cameron.

MARCH

- Mar. 1. Debate team wins over Central.
- Mar. 6. Home Economic Club entertains faculty.
- Mar. 9. Junior play, "What Happened to Jones."
- Mar. 10. "C" Club organized.
- Mar. 13. Junior boys win over Seniors.
- Mar. 14. Senior girls win over Juniors.
- Mar. 15. C. H. S. faculty defeat M. W. C. faculty.
- Mar. 16. Home Economic department gives Board of Education a dinner.

HIGH LIGHTS OF THE YEAR

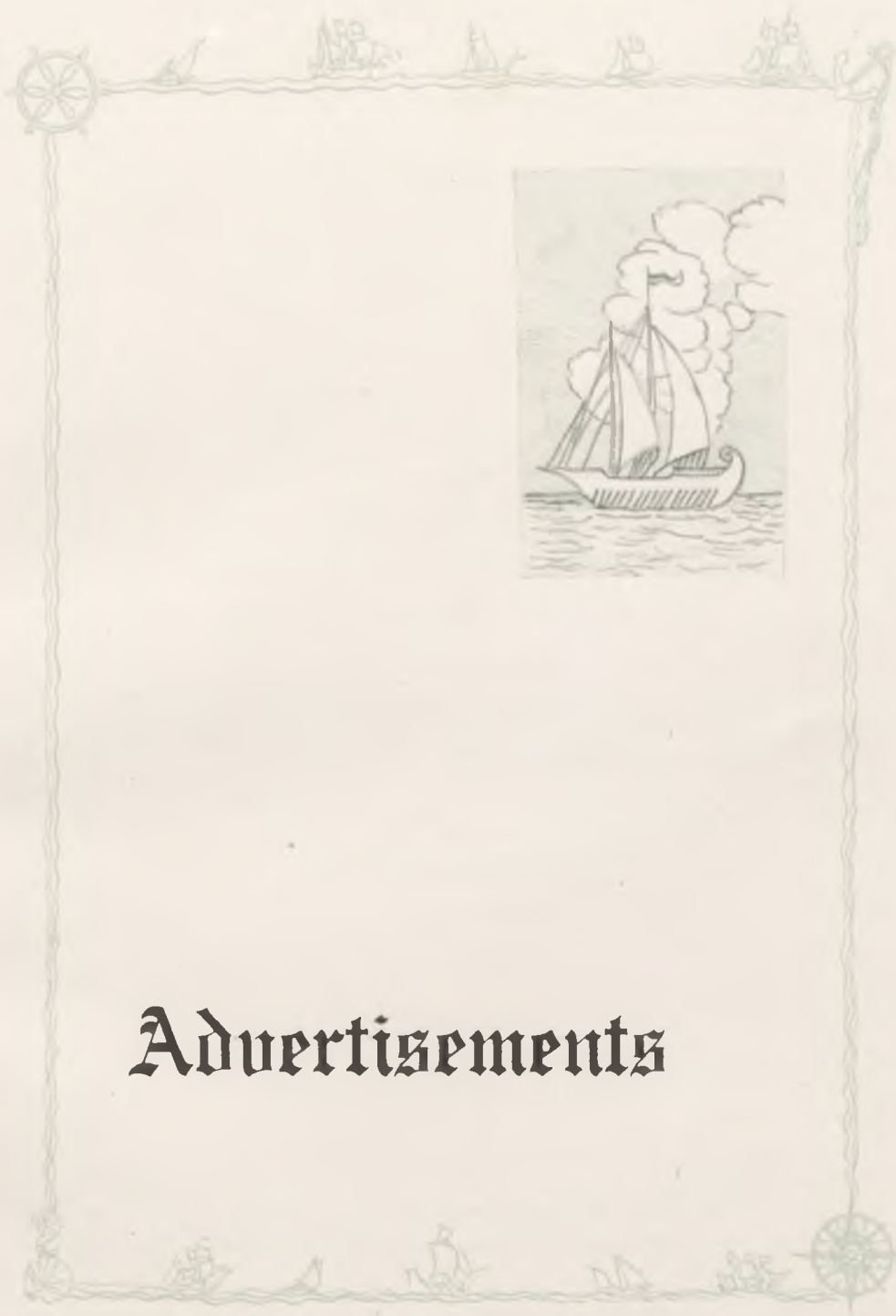
- Mar. 17. St. Patrick's day party with the Freshmen in the gym.
Mar. 21. Senior picnic, Chemistry club party.
Mar. 23 Juniors present assembly program.
Mar. 25. Freshman party.
Mar. 31. Commercial students compete at Excelsior Springs.

APRIL

- April 2. Junior picnic at Stoner's bridge.
April 3. Junior High preliminary contests in declamation and oration.
April 4. Junior High preliminaries in music. Apron day.
April 5. Senior High preliminaries in music, declamation and oration.
April 6. Missouri University Glee Club Concert.
April 9. Finals in literary contests.
April 11. Hi-Y Mother and Son banquet.
April 13. Clinton County Literary contests in afternoon and evening. Cameron takes 10 of 11 first places.
April 15. Debate letters awarded.
April 19. William Jewell meet. Third place in track to Cameron High.
April 20. Medley relay team to Kansas relays at Lawrence
April 25. M. W. C. Carnival.
April 27. Grade School Operetta.
April 26-28 Maryville contests.

MAY

- May 5. Track meet at Plattsburg. Cameron takes every first place.
May 8. Senior play "Romeo and Jane."
May 11. Missouri Wesleyan track and literary meet. Cameron places first in literary and second in track.
May 13. Baccalaureate sermon by Rev. McNamee.
May 14. Senior class day at 10:00 a. m. and Junior-Senior banquet at 8:00 p. m.
May 15. Senior picnic at St. Joseph.
May 16. Commencement exercises, Dr. Harmon the speaker.
May 17. Final exams.
May 18. Grade cards out. Track team goes to Manhattan relays.
May 19. All over and all set for next year.



Advertisements

High School Men Say---

"Nothing Else Will Do"

In this most popular of all High School Suits, Society Brand has carried out every little detail with a fine regard for the high school man's preference. No frills, no extremes of any kind, but the very last word in distinctively smart High School cut, by-----

Society Brand

C. N. Stucker & Co.

Owen & Murray

THE REXALL STORE

Drugs

Books

Kodaks

Wall Paper

Shades

and Paints

New Soda Fountain

Your Inspection Requested

119 E. Third Street

Electric Shoe Shop

Have your shoes rebuilt by the
Standard Cementing Process.

No Nails

No Stitches

No Tight Stiff Shoes

SHINE PARLOR

For Ladies and Men

R. L. Macrae

Cameron

Missouri

W. H. S. McGLUMPHY

ABSTRACTS OF TITLE

Insurance—Notary

ROOM 22

Trust Company Bldg.

Moss Auten: "I suppose you have
gone out with worse looking fellows
than me?"

Bernice Mc.: (No answer).

Moss: "I say, I guess you've gone
out with worse looking fellows than
me."

Bernice: "Shut up. I'm thinking as
hard as I can."

WALTER E. TRICE

Attorney and Counselor

204-205 Farmers Bank Building

Cameron, Mo.

Louise Berten: "Why is your neck
like a typewriter?"

Claude Kaman: "Gee, I don't
know."

Louise: "Because it's underwood."

In another year how different that boy or girl of yours will look—but photographs of the children never grow up.

Don't fail to have them made at the—

A. S. Brown Studio

105 E. 3rd St., Cameron, Mo.

The MYSTIC

Plain Price Merc. Co.

"THE FAMILY STORE"

Phone 58

GENERAL MERCHANDISE



Phoenix Silk Hose

For Long Mileage

Success does not come in a day. Consistency is a jewel. We have a book already made out for you. Make it your pass to success instead of a "Let-it-pass" book.

The Farmers Bank of Cameron

G. W. SHERMAN, Optometrist



Eyes Examined Glasses Fitted

Martha Buckley: "Helen's cheeks are like roses."

Marjorie: "Aren't you laying it on pretty thick?"

Martha: "No, but Helen is."

Page One Hundred Three

1928



We are here to please the boys
and girls of C. H. S.

There's satisfaction in the know-
ledge that your feet are well
dressed in
Star Brand Shoes

We sell you more—charge less
THE QUALITY SHOE STORE



M. E. E'more, Prop.



For Quality and Service Call 77

The Old Reliable Stand

Feed and Coal

Thomas Fiddick

Prof. Elliott: "For what was Da-
mascus famous?"

Dick Bowman: "Fine steel rapi-
ers."

Prof.: "And Toledo?"

Dick: "Honest weight—no springs."

Judge: You admit then that you
ran over this man, drove around the
block and ran over him again. What
can you say in your defense?

Hawker: Your Honor, I didn't
know I got him the first time.

Let us rebuild your shoes. The price is right.

We Guarantee Our Work

The Busy-Bee Repair Shop

F. F. SKINNER, Prop.



The
'GOLD STANDARD'

WHAT the gold standard means in money values, the Burger imprint is to the college and school annual world. It signifies the designing genius which has created the greatest annuals, the utmost in printing plates, and a service which is truly specialized, intelligent, interested, and thorough, comprehending every phase of yearbook building and financing. ¶ This book is a product of such service. ¶ An inquiry about your book will be welcome.

Burger-Baird Engraving Co.

ARTISTS · DESIGNERS
GRAPHIC ARTS BLDG.



PHOTO ENGRAVERS
KANSAS CITY MO.

The Cameron Trust Company

CAPITAL \$100,000.00

SURPLUS \$100,000.00

UNDIVIDED PROFITS \$25,000

Compliments of

Edelen Pharmacy

SERVICE PLUS QUALITY

C. EVERETT FORD

—For—

HARDWARE, CUTLERY, ETC.

Our Aim is Good Goods
At Low Prices

Cameron, Mo.

May you be as successful in

The Future

As You Have Been Beautiful

Are the Sentiments of

The Blue Bird Beauty Shop

PARK BARBER SHOP

First Class Barber Work
Hot or Cold Bath

Your Patronage Appreciated

W. H. DENNY, Prop.

Cameron : : Missouri

While Looking At Our Line of

Kodaks PENS and Pencils

You may refresh yourself at our

Mechanicold Fountain

Where you will meet your friends

LAIN DRUG CO.

Live Stores
—in—
Live Towns

High Grade Coal

—and—

Distilled Water Ice

Cameron Ice & Fuel Co.

C. S. ESTEP, Manager

Phone 25

Place Brothers

**GROCERIES AND
MEATS**

Phone 291 Cameron, Mo.

Miss Mary Munson

MILLINERY
—and—
ART GOODS

103 West Third Street
Cameron : : Missouri

Ray Me.: "Fair Louise, I would that you had a window in your heart, that I might peer through to see the answer to my love."

Louise: "Well, I haven't a window in my heart, but you sure give me a pane in the neck."

C. B. Henderson

**Automobile Service
Parts and Accessories**

Telephone 127
Cameron, Mo. 3rd & Walnut

Page One Hundred Seven

South of City Park

Phone 409

PARK CAFE

Cameron, Mo.

Large Dining Room—Chicken Dinner on Sunday
Luncheons—Dinners—Steaks—Short Orders
Change of Menu Every Day

FOUNTAIN SERVICE—Everything to Drink

Reservations For Parties

MR. AND MRS. CLARENCE E. DAVID

Phone 295

STREAM'S TAXI SERVICE

Calls Answered Day or Night

Dodge Enclosed Car

HARRY SALSBURY, Prop.

Successor to Frank Stream

TIME EXTENSION

Ray McCommas: "Sir, I want permission to be away three days after the end of vacation."

Prof. Osborn: "Ah, you want three more days of Grace?"

Ray: "No, sir. Three more days of Gertrude."

"You say Lavon was in a stupor when he smashed into the fence?"

"Hell—no—it was his dad's new Star."

John Hunter to druggist: "Give me five pennies for a nickle."

Wayne Mayes: "Sure, hope you enjoy the sermon."

YOUR TELEPHONE

A TIME SAVER AND MONEY MAKER

Use of the telephone has become so commonplace that most people lose sight of its real value, but the value is there just the same. The telephone is one of your best partners in business, a most efficient servant in the home.

The Cameron Telephone Company

Cameron, Mo.

Dr. Maxwell

Chiropractor

Office Phone 445

Residence Phone 820

Cameron : : Mo.

C. E. WISE

CASH GROCERY

Quality and Service

Phone 281

Cameron : : Missouri

Adah Moore: Hurrah! Five dollars for my latest story.

Irene Shirts: Congratulations! From whom did you get the money

Adah: From the Express company. They lost it.

Lois Bryan: They laughed when I sat down at the piano. Some damned fool had removed the stool.

Miss Cameron: (in the fourth period of English class)—Tomorrow we shall take Shakespeare's life— come prepared.

NEW FLORENCE

BARBER SHOP

Three Chairs

W. C. FLORENCE

Cameron : : Missouri



The School that places Students *"No Position, No Pay"*

CHILlicothe BUSINESS COLLEGE
CHILlicothe, MO.



HIGH SCHOOL



OUR FIVE BIG BUILDINGS

DR. L. F. GRAHAM

DENTIST

Ground floor, Citizens office Bldg

Phones: Office 155. Res. 585

Bernice: "Why leave your shoes in the sun?"

Dick A.: "I want to get them shined."

Steaks a Specialty, Open All Nite
High School Students Welcome to
HIWAY CAFE

Blue Room For Parties And Banquets

Soda Fountain Service

Chicken Dinners Every Day

GEO. M. ZANCKER, Prop.

WOOD TAXI AND SERVICE STATION

H. C. Gasoline and Opaline Oils

Call 662 For Taxi

Closed Cars Careful Drivers

CHAS. A. WOOD, Prop.



CHAPMAN'S DAIRY

SCHOOL SUPPLIES

STATIONERY

TOILET GOODS

“Get It Where They’ve Got It”

D. H. McCallum

The Corner Drug Store



THE STYLE SHOW IS ON

Please consider this your invitation to call and inspect the beautiful new spring models.

R. S. Brown Shoe Co.

Economy Through Quality

Miss Klepper: “Why were the Ten Commandments written on stone?”

Frazier S.: “So they’d be harder to break.”

Soph: She’s nuts.

Senior: What do you mean nuts? She’s my sister.

Soph: Nuts so bad. Nuts so bad.

W. H. Kimes & Sons

Hardware and Furniture

Home of Devoe Paints and Varnishes

THE SUPPLY STORE

“Cameron’s Food Center”

Banquet Foods—Our Specialty

D. W. GAMET, Prop.

Royal } Theatre
Senate }

The Most of the Best for
The Least

Patronize Home Industry

"EAT TAYLOR'S BREAD"

None Better

Only One Bread—That's

TAYLOR'S

Telephone 193

If your girl throws you down, think
of poor Adam, he had only one to
pick from.

THE
Standard Store

—
DRY GOODS, READY-TO-
WEAR, MILLINERY

—
A Good Store in a Good Town

—
W. E. ATKINSON, Mgr.
Cameron, Mo.

SHEAFFER'S

Life-time
PEN AND
PENCIL

—
For HIM and HER

Bulova

Wrist and Strap
WATCHES

The world's finest
time-piece.



Leibrandt Jewelry
Store

Mattingly Bros. Stores Co.

5c to \$5.00 Stores

TWELVE BIG STORES IN MISSOURI

**Cameron Poultry
House**

Highest Cash Price Paid For
Eggs, Cream and
Poultry

W. H. DAVISON, Prop.
Phone 353

"Now see here! I'll never let my
son marry you. Why you're old
enough to be his mother."

"Oh, you old darling! Is this a
proposal?"

Page One Hundred Thirteen

Exclusive Styles In Ladies'

Ready-to-Wear

—At—

Cameron Style Shop

Send it to

BYERS—THE CLEANER

"Where It's Done Right"

Phone 23. Old Postoffice Bldg.

Cameron, Mo.

Layon A.: "Shall we dance or talk?"

Mable W.: "I'm so tired. Let's dance."

Mallory Hats

Idé Shirts and Collars

Holeproof Hosiery

For Men and Women

Kuppenheimer Clothes

Bradley Sweaters

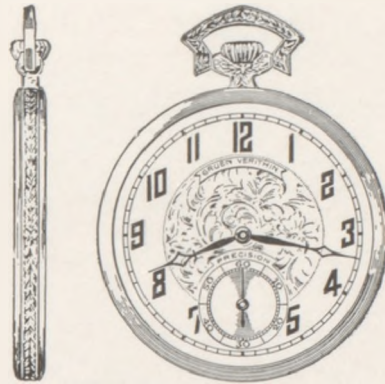
For Men and Women

Dillener Clothing Co.

FOR GRADUATION

Nothing can surpass a Gruen Guild Watch for boy or girl. They excel all others in appearance, accuracy and price, the result of over fifty years experience in building watches.

Also many other fine gifts for all occasions.



GRUEN VERITHIN

F. H. AMES
JEWELRY, OPTICAL & MUSIC STORE

Have your glasses fitted by Dr. Goll, Registered Aptometrist

Walter W. Hammer

Ford
THE UNIVERSAL CAR

Authorized Sales and Service

FORD FORDSON LINCOLN

Cameron, Missouri

PICTURE FRAMING

Prompt Service

MOORE FUNERAL HOME

Phone 755

Cameron, Mo.

Mr. Williams (in music): "Who can tell me the national air of Italy?"

Earl M.: "Garlic."

Page One Hundred Fifteen

Ocean to Ocean Cafe

Best Place in Town to Eat

Special Dinner and Supper
35 Cents

Short Orders at All Times

Famous For Our
Chili and Sandwiches

Cameron Junction Lunch Room

We Excel In

GOOD THINGS TO EAT

Give Us a Trial

W. E. QUIGLEY, Prop.

Miss Klepper: "I will dismiss the study hall ten minutes early today. Pass out quietly so as not to wake the other classes."

Queen: "The baby has a stomach ache."

King: "Page the secretary of the interior."

**TOYS, NOTIONS, AND
QUEENSWARE**

Telephone 57

PLUMMER'S VARIETY STORE

(We Give Eagle Stamps)

The News-Observer

Established in 1906

Published in the interest of
Cameron

Specially Equipped For Fine
Job Printing

John Hunter: "Would you rather take a walk or be kissed?"

Helen S.: "You know I have a sprained ankle."

Teacher: "Who's talking?"

Student: "It's me."

Teacher: "It's I."

Student: "Well, why did you ask me, if it was you?"

HEADS WIN!

Thousand dollar jobs are hard to find—because most of them are taken. But \$10,000 jobs go begging—because there are not enough trained, qualified men and women to fill them.

AFTER HIGH SCHOOL WHAT?

The Seniors of Cameron High School will soon be finishing school. What will you plan to do then? Will you take a \$1,000 job and be contented to hold it the rest of your life? Or will you go to College and prepare yourself to hold the \$10,000 job? It's up to you—Now.

THIS COLLEGE

Was established by the State of Missouri to train leaders for responsible positions. It is maintained so boys and girls of Northwest Missouri may have the best education opportunities at the lowest cost. New buildings, new equipment and a strong faculty are ready to serve you. The incidental fees are only \$15 a term. Living costs are low—student life is pleasant.

Our catalog is yours for the asking.

Northwest Missouri State Teachers College

Maryville, Mo.

UEL N. LAMKIN, President

J. B. RUSSELL

LUMBER LIME CEMENT

All Kinds of Building Material

Where Service and Quality Meet

Established 1894

Long-Bell Forest Products

ED. LAMB

FIRST CLASS SHOE REPAIRING

Your Patronage Solicited

Cameron

:

:

Missouri

Page One Hundred Seventeen

The Friendship of the Student

Body is One of Our Most

Valuable Assets

We trust we shall retain it

The Cameron Progress

TOM W. KLEPPER

CORONA TYPEWRITERS

DR. O. A. SMITH

DENTIST

Cameron, Mo.

J. W. POLAND

FURNITURE, RUGS

AND LINOLEUM

Y. M. C. A. Building

I sit alone in the twilight
Forsaken by girlies and men,
And murmur over and over—
"I'll never eat onions again!"

Alma J.: "You always look at me
in such a paternal way."

Carroll G.: "That's because I am
so pop-eyed."

TEA AND COFFEE

Richelieu

FLOUR

Queen of the Pantry

CANNED GOODS

Richelieu

WILLIAMS GROCERY AND MEAT MEAT MARKET

M. R. WILLIAMS, Prop.

"Best Things to Eat"

:

Phone 520

DR. C. S. COMPTON

OSTEOPATHIC

Physician and Surgeon

Office, Corner Third & Cherry

Cameron, Missouri

J. F. WOOD

Dealer in

Eggs, Poultry, Hides and Cream

212 North Chestnut

Cameron : : Missouri



We Wish

Your good will and your business. See us for—

Pianos, Players, Orthophonic Victrolas, Sheet Music, Records, Player Rolls, Violins, Banjos, Guitars, Mandolins, Ukles, and all music accessories. Come in.

MAHAFFEY MUSIC CO

Cameron, Mo.

MILLARD'S Tire and Battery Shop

Goodyear Tires

National Batteries

Vulcanizing and Battery Service. We put the "Can" in Vulcanize.

NEW COLEMAN STOVES

HARDWARE — IMPLEMENTS

O. E. CONNELL

HARDWARE STORE

O. F. ULRICH

Insurance

Frances Wright: "What's good for biting finger nails?"

Mary Byers: "Sharp teeth."

Page One Hundred Nineteen

BUDDIES

