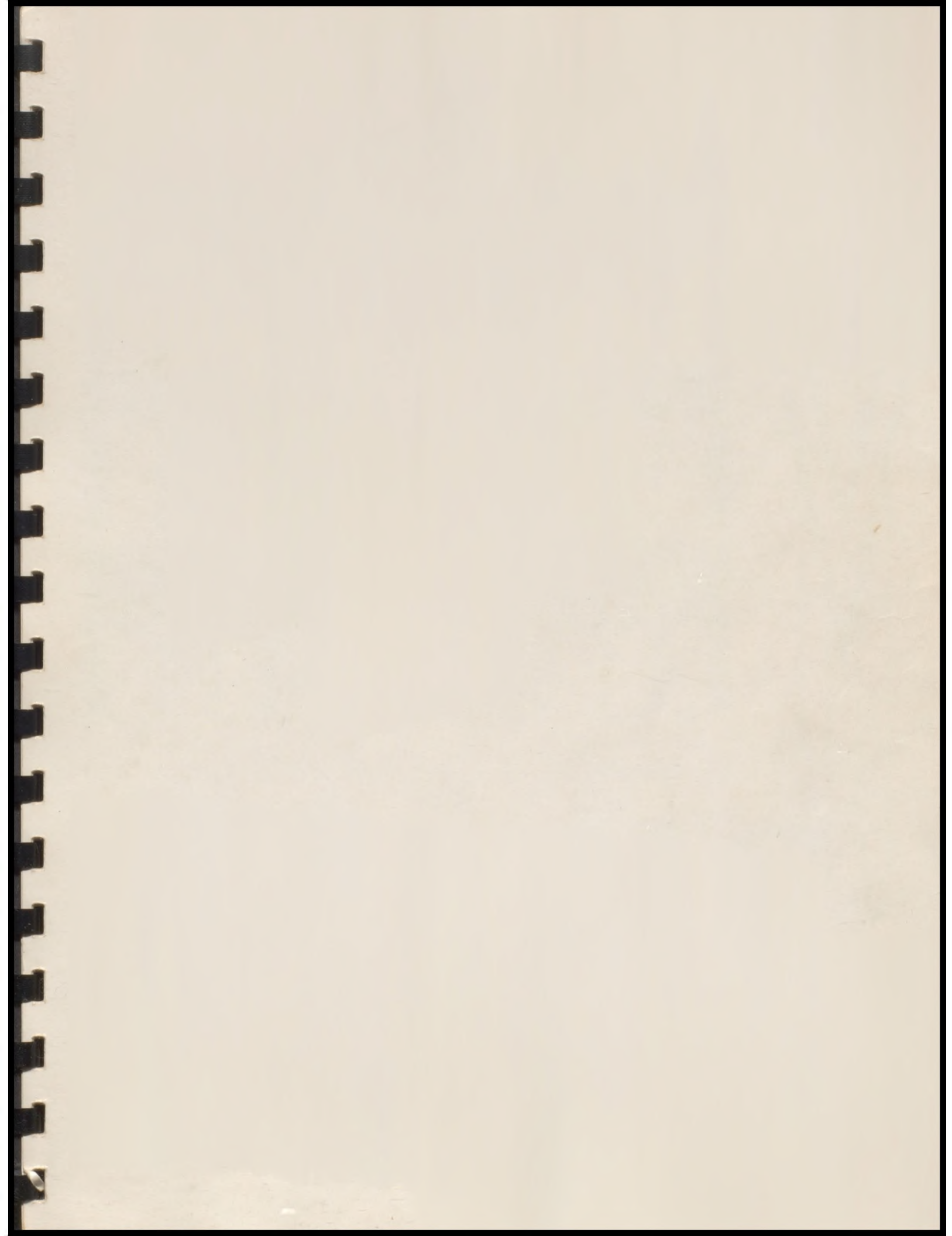


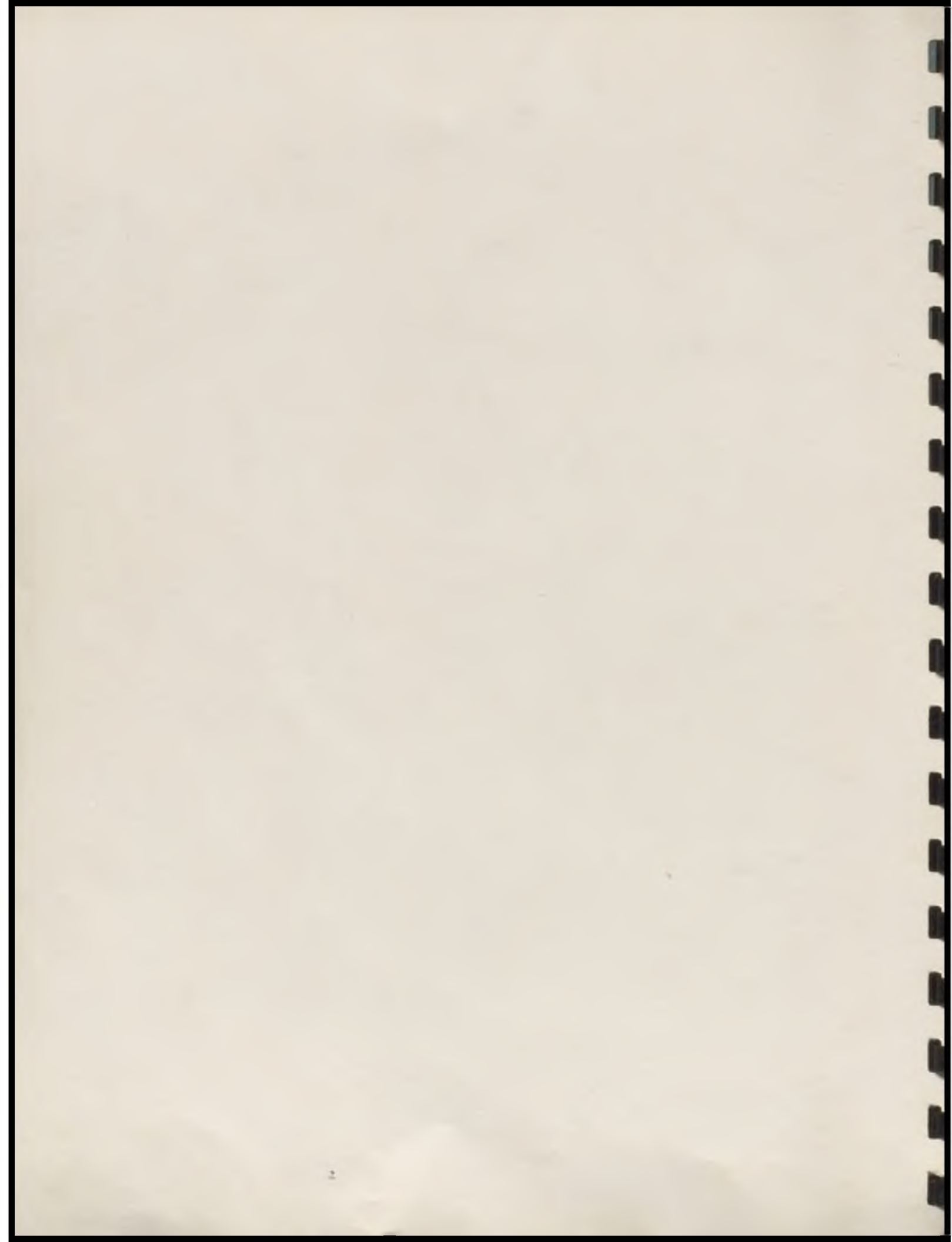
1 9 4 3

MYSTIC











MYSTIC

1

9

4

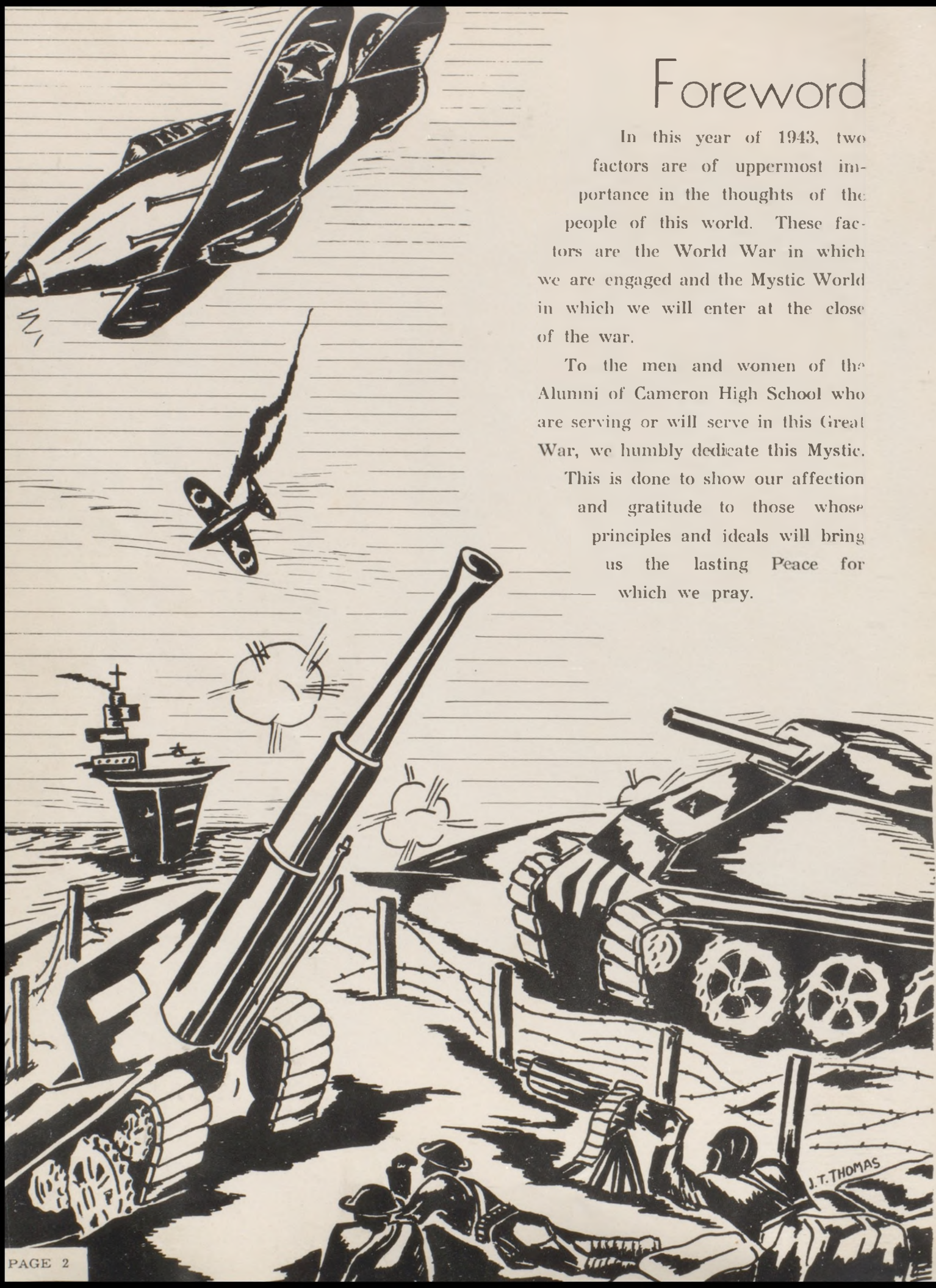
3

Foreword

In this year of 1943, two factors are of uppermost importance in the thoughts of the people of this world. These factors are the World War in which we are engaged and the Mystic World in which we will enter at the close of the war.

To the men and women of the Alumni of Cameron High School who are serving or will serve in this Great War, we humbly dedicate this Mystic.

This is done to show our affection and gratitude to those whose principles and ideals will bring us the lasting Peace for which we pray.



A decorative border surrounds the text, featuring a repeating pattern of anchors, bowls with emblems, and birds. The bowls contain a shield with an eagle and stars, and are decorated with floral patterns. The birds are stylized with spread wings. The background is a dark, geometric pattern of triangles and lines.

ADMINISTRATION

To the Head of our Armed Forces, the government of Cameron High School, we owe a great deal.

The Board of Education, our Board of Strategy, is a group of men who work behind the lines to achieve better conditions and ultimate victory for the ranks.

The Admiral and his aide see front line action constantly. Their level heads and calm courage have piloted the ship through many battles.

Our General and his aide have both earned their coveted commissions. They, too, have come safely through many conflicts, which have only proved how valuable they are.

The Officers, whether they be "Second Looies" or Colonels, are the people most closely connected with the privates themselves. For this fact alone, if for nothing else, they are sincerely appreciated.



BOARD OF EDUCATION: President, J. Foster Poland, (inset); Vice-President, Dr. G. W. Sherman; Sec'y., C. E. McCoy; Treas., Charles Groom; Carl Ellis, Doak McKee, Merritt Campbell, Supt. C. Finis Frazier, Principal J. Don Miller.



C. FINIS FRAZIER
Superintendent

JEANNETTE CHAPMAN
Secretary



J. DON MILLER
Principal

GLADYS MURPHY
Secretary



R. L. BOLLINGER
Science



MRS. H. A. TOTZKE
Mathematics



MRS. R. E. PAUL
English

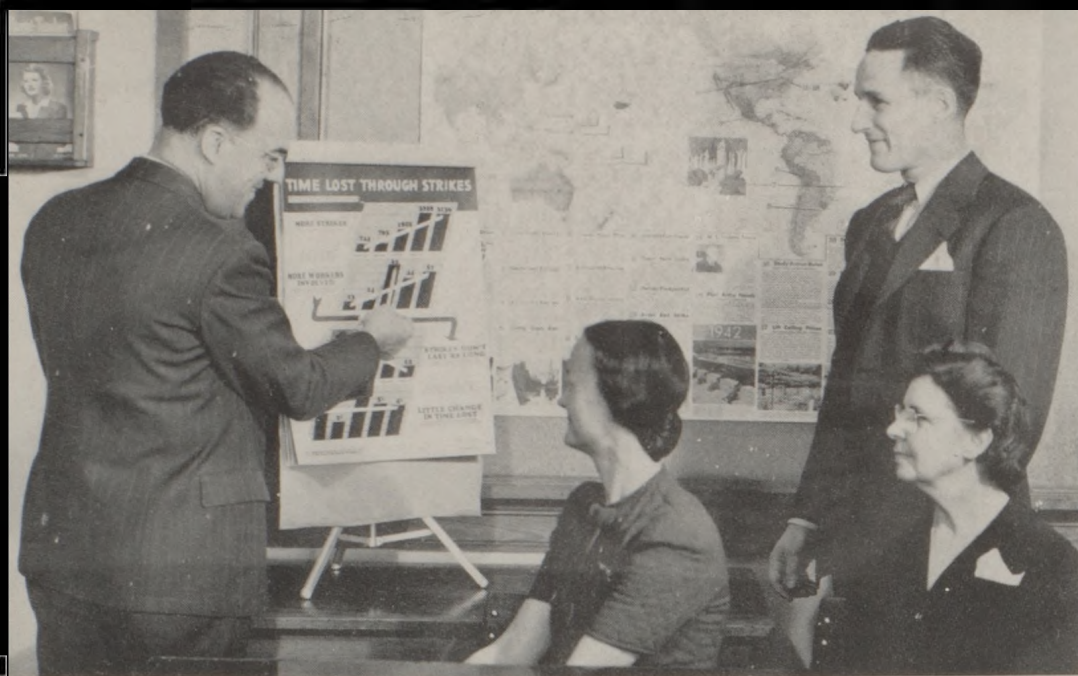
VERA KROENCKE
English, Spanish



ESTHER MILHOLLAND
WM. B. CONKLIN
Health, Physical
Education

NEOLA POLLARD
Vocational Home
Economics
CHARLES W. HILL
Vocational
Agriculture



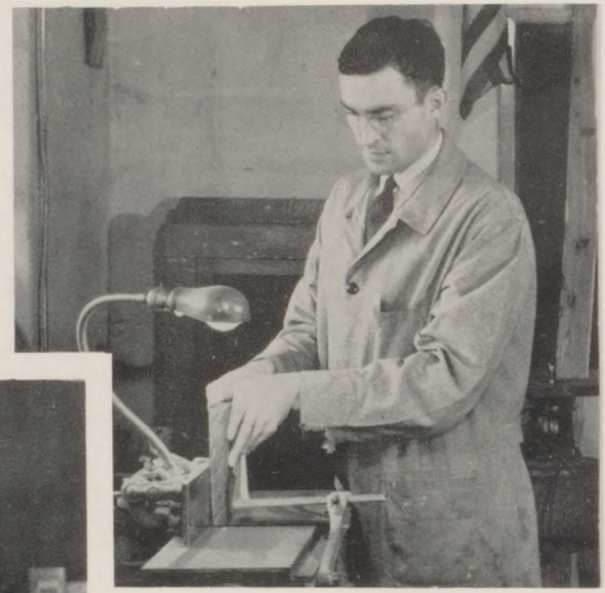


C. FINIS FRAZIER
Psychology

J. DON MILLER
American History

MRS. R. M. BOWMAN
American History
World History

MRS. T. E. DEEM
American Problems
Missouri History
Citizenship



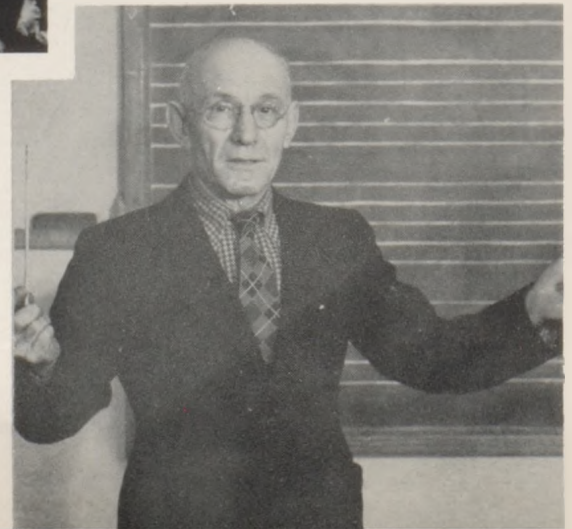
RUSSELL F. DOWELL
Industrial Arts



CARRIE SHEPHERD
Librarian

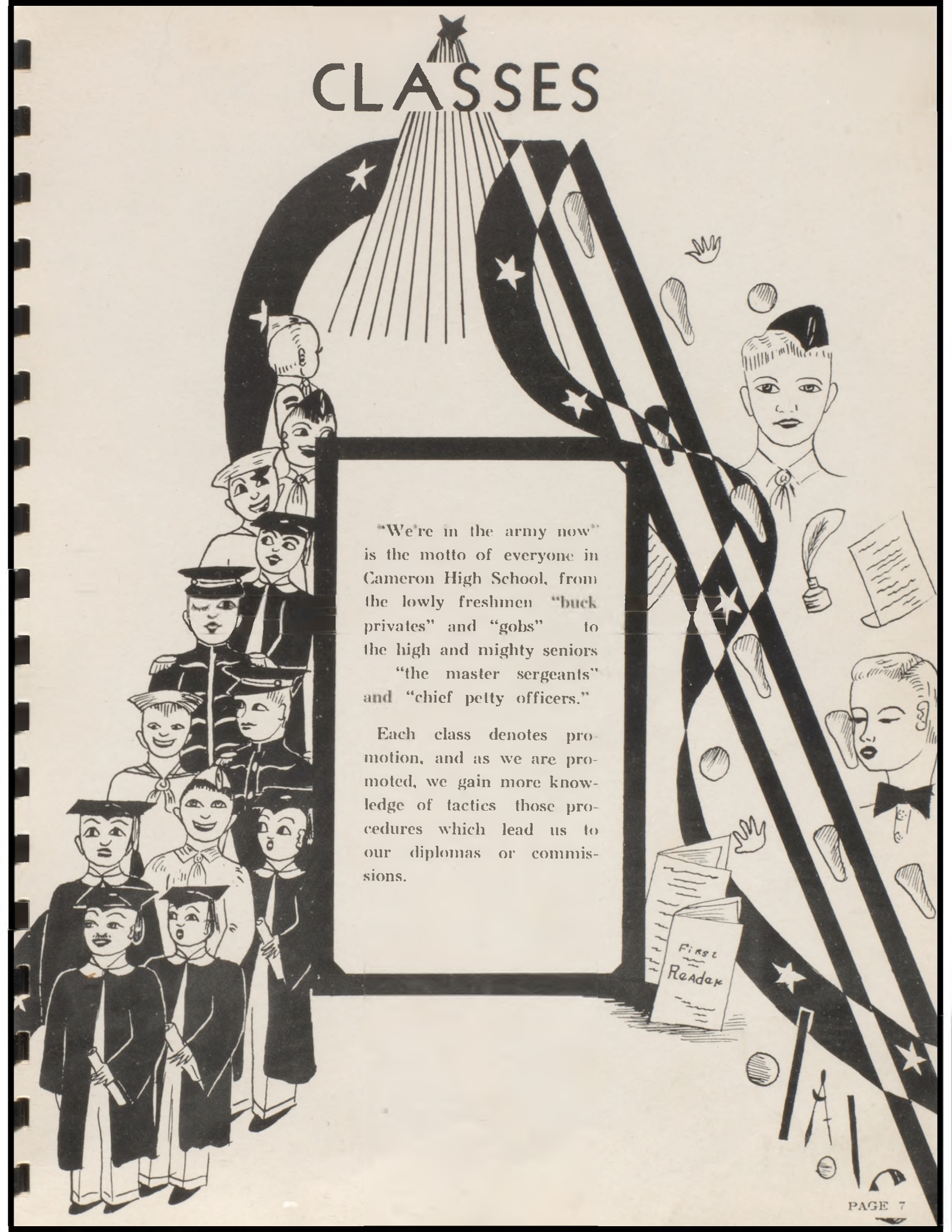


ALLENE HUNT
Commerce



W. E. TRACY
Band

CLASSES



"We're in the army now" is the motto of everyone in Cameron High School, from the lowly freshmen "buck privates" and "gobs" to the high and mighty seniors "the master sergeants" and "chief petty officers."

Each class denotes promotion, and as we are promoted, we gain more knowledge of tactics those procedures which lead us to our diplomas or commissions.

SENIORS



IRENE ALBRIGHT—Chorus '41, '42; Junior Play '42; Dramatics Play '42; Operetta '41, Citizenship Club '40

DELLA MAE BAKER—Chorus '40, '41, '42; Drum Corps '43; Junior Play '42; Operetta '41; Girl Reserves '43; Citizenship Club '40; Mystic '42, '43; Home Ec. Club '40.

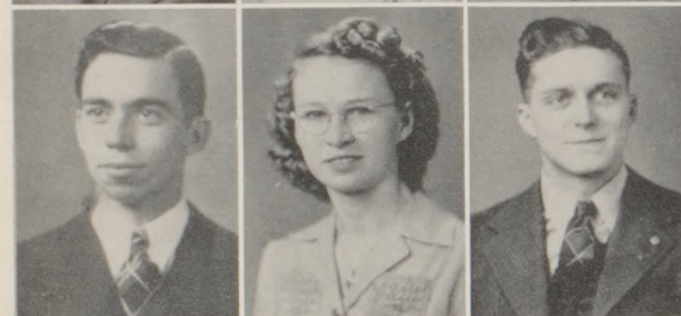
MARY E. BARNARD—



ROBERT BARNES—Chorus '40, '43.

LOIS BAXTER—Drum Corps '40, '41, '42; Dramatics Play '42; Girl Reserves '41, '42, '43; Girl Reserves Sec. '42, '43; Tank Staff '43; Junior Play '42; Debate Club '40; Dragonettes '42, '43; Hobby Club '40; Girl Scout '40, '41, '42.

MARGUERITE BELK—



GERALD BELL—Chorus '40; Discussion Club '41.

EDITH BENSON—

FRANCIS BERRYMAN—Basketball '40; Track '40, '41; F. F. A. '40, '41, '42, '43.



BETTY GAYLE BILLINGS—Drum Corps '40, '41, '42; Girl Reserves '41, '42, '43; Dragonettes '42, '43.

MARILYN JUNE BROWN—Junior Play '42; Discussion Club '41; Home Ec. Club '40; Mystic '43.

RETA BUNNELL—Drum Corps '41, '42; Girl Reserves '41, '42, '43; Dragonettes '42, '43; Home Ec. Club '40.



ERMA MAE BURNETT—

FRANCES LOUISE BURNETT—

MARY LEE BURR—Drum Corps '40, '41, '42.



DORIS JEAN CANNON—Chorus '40; Hobby Club '40.

DOROTHY CHRISTIAN—

FRANCIS CLARK—Junior Play '42; Tank Staff '43; Dramatics Play '42.

SENIORS

DONALD CLOSE—F. F. A. '40, '41, '42, '43
 Treas. of F. F. A. '42; Pres. of F. F. A. '43
 CLAUDE COLDWELL—Band '40, '41, '42.
 CHARLES CONSTANCE—Band '39, '40, '41.



WILMA CROSS—Chorus '43.
 JENNIE RUTH CUDWORTH—Chorus '40, '41,
 '42, '43; Junior Play '42; Citizenship Club '40.
 Home Ec. Club '40; Operetta '41.
 ESTHER DAVIS—Chorus '42, '43; Home Ec.
 Club '40; Citizenship Club '40.



CAROLYN DIETZSCHOLD—
 DON DIVEN—Band '41, '42.
 CLAUDENA DUNCAN—Drum Corps '40, '41



DON DUNCAN—F. F. A. '40, '41, '42, '43; Sec-
 retary of F. F. A. '43; Mystic '43.
 HAROLD EDWARDS—
 JAKE EDWARDS—



BETTY B. ELLIS—Band '40, '41, '42, '43; Jun-
 ior Play '42; Pep Band '42, '43; Girl Scouts
 '40, '41, '42; Tank Staff '43; Attendant to Foot-
 ball Queen '41; Dragonette '42, '43; Girl Re-
 serves '41, '42, '43; Girl Reserve Vice-President
 '42; Countess '41; Princess '42.
 MAX ELROD—
 KERMIT ENSIGN—Band '40; Football '41, '42,
 F. F. A. Club '43.



WILLIAM FESSANT—Band '39, '40, '41, '42,
 '43; Chorus '39, '40, '41, '42, '43; Music Club
 '39, '40; Operetta '41.
 ILLA FEWINS—Band '40; Chorus '41, '43
 LILLIAN FRENCH—Band '42, '43; Senior Clas-
 Sec. '43; Girl Reserve Pres. '43; Pep Band
 '42, '43; Tank Staff '43; Mystic '43; Girl Re-
 serves '42, '43.



SENIORS

GENE GAEDE--Football '43; Basketball '43.
 EARNEST GAULDEN--
 BILL GIBSON--Band '40, '41, '42, '43; Pep Band
 '41, '42, '43.

BILLY GITTHENS--F. F. A. '40, '41.
 ROBERT GOVER--Football '43; Intra-mural
 Basketball Capt. '43; Track '40; Pres. of Sen-
 ior Class '43; Junior Play '42; "C" Club '43;
 Discussion Club '41; Tank Staff '43; Mystic
 Staff '43.

FRANCIS GRAHAM--Intra-mural Basketball
 Capt. '43; Junior Play '42; "C" Club '43; De-
 bate Squad '42; Oratory '42; Boy Scouts '40,
 '41, '42, '43; Football '40, '41, '42, '43

BETTY GROVE--Band '41, '42, '43; Pep Band
 '41, '42, '43; Chorus '41; Drum Corps '41; Jun-
 ior Play '42; Girl Reserves '41, '42, '43.

SHIRLEY LEE HAYDEN--Junior Band '40,
 Senior Band '41, '42, '43; Drum Corps '40; Jun-
 ior Play '42.

ORVAL HELDENBRAND--Intra-mural Basket-
 ball '43; F. F. A. Club '40, '41.

BILLY BURR HUGHES--Football '43; Drama-
 tics Play '42; F. F. A. Club '40, '41; "C" Club
 '43.

BETTIE JANE IBA--Drum Corps '40, '41, '42,
 '43; Pep Squad '40; Girl Reserves '41; Girl
 Scouts '40, '41.

BOB JACKSON--Pres. Junior Class; Dramatics
 Class Play '42.

MARY FRANCES JOHNSON--Drum Corps '40,
 '41, '42; Sr. Sergeant-at-Arms '43; Jr. Play
 '42; Dragonettes '43; Girl Reserves '41, '42, '43;
 Girl Scouts '40, '41, '42; Tank '43; Mystic '43;
 Girl Reserves Vice-President '43.

EARL E. JUKES--Band '40, '41, '42, '43; Foot-
 ball '43; Basketball '42, '43; Freshman Vice-
 Pres. '40; Senior Vice-Pres. '43; Dramatics
 Play '42; Cheer Leader '41; Mystic '43; "C"
 Club '43; Hi Y '41, '42.

BILL KEMPER--Football '40, '41, '42, '43; Co-
 Capt. Football '43; Count '41; Prince '42;
 Basketball '40, '41, '42, '43; "C" Club '42, '43;
 Track '41; Sergeant-at-Arms '41.

MARY JEAN KERR--Chorus '40, '41; Drum
 Corps '43; Girl Reserves '43.

DORIS M. KORNEMAN--Operetta '41; Chorus
 '40, '41; Drum Corps '40, '41, '42.

MARY KATHRINE KORNEMAN--Chorus
 '41, '42, '43; Junior Play '42.



SENIORS

RUTH KORNEMAN—Chorus '43; Drum Corps '40, '41, '42.

TOM McALLEN—Mystic '43; Band '41, '42, '43; Pop Band '43.

EDDIE McANAW—Football '40, '41, '42, '43; Basketball '40, '41, '42, '43; Junior Class Sergeant-at-Arms '42; "C" Club '42, '43.

RUBY JEAN McCOY—Band '40, '41, '42, '43; Junior Play '42; Girl Reserves '41; Girl Scouts '40, '41, '42; Tank '43; Carnival Queen '40; Football Queen '42; Cheer Leader '41; '42, '43; Attendant to Football Queen '41; Homecoming Queen '43.

KENNETH McMAHILL—F. F. A. '40, '41, '42.
FRANKLIN McQUINN

EDWARD MATTOX—F. F. A. '40, '41, '42, '43.

PETTY JO MILLIGAN—Girl Scouts '40, '41; Majorette '40, '41.

BETTY MILLS—

BOB MORGAN—Chorus '42, '43; Football '42, '43; Basketball '42, '43; "C" Club '42, '43.

ALLEN MUDERS—Football '42, '43; Track '41; Vice-Pres. '42; Junior Play '42; Dramatics Play '42; "C" Club '43.

LEO MURPHY—Football '43.

MARTIN MURPHY—

JAMES NEWELL—Junior Play '42; F. F. A. '40, '41, '42.

VENITA OSWALD—

ALTON PICKETT—Band '40, '41; Football '40, '42, '43; Co-Capt. Football '43; Basketball '40; Debate Club '42; "C" Club '42, '43; F. F. A. '42, '43; Treasurer of F. F. A. '43.

DALLAS PICKETT—Band '40, '41; Football '40, '42, '43; Freshman Pres. '40; "C" Club '42, '43; F. F. A. '41, '42, Vice-President '42, President '43; Mystic '43.

DICK POLAND—Hobby Club '40; Football '40, '41, '42, '43; Intra-mural Basketball Capt. '43; "C" Club Sec. '42; "C" Club Pres. '43; Citizenship Club '40; American Legion Oratorical Contest '40, '41, '42, '43; C. H. S. Debate Squad '41; Tank '43; Boy Scouts '40, '41, '42, '43; Discussion Club '41.



SENIORS



WALLACE RICE — Junior Band '42, Senior Band '43.

WILBUR ROBISON—F. F. A. '40, '41, '42, '43.

DORIS RUMMAGE—Citizenship Club '40.



EVELYN RUSSELL—Drum Corps '41, '42, '43; Dragonettes '42, '43; Girl Reserves '43; Citizenship Club '40.

UHL O. SACKMAN—Band '40, '41, '42, '43; Junior Play '42, Vice-Pres. '41 of Jr. Municipal Band; Pep Band '40, '41, '42, '43; Cornet Quartette '41, '42, '43.

VIVIEN SCHLORFF—Senior Class Treas. '43; Girl Reserves '43; Dragonettes '43; Citizenship Club '40; Carnival Queen '43; Mystic '43.



DORTHA SCURLOCK—Jr. Band '40; Chorus '41, '42, '43; Dramatics Play '42; Jr. Play '42.

ANNA SHAVER—Girl Reserves '43; Tank '43; Citizenship Club Pres. '40.

MARY BETH SHELLE—Girl Reserves '43.



GEORGE SHIRTS—Football '43.

VIVIAN JEAN SHIRTS—Operetta '41; Citizenship Club '40; Chorus '41, '42; Mystic '43.

GEORGE ANN SIGRIST—



GERALDINE SLOAN—Chorus '40.

WILMA LEE SLOAN—Operetta '41; Chorus '41, '42, '43; Drum Corps '40, '41, '42, '43.

LOREN SLOAN—Football '43; F. F. A. '40, '41, '42.



CAROLYN SMITH—Dramatics Play '43; Discussion Club '40.

HUGH SMITH—Junior Play '42; Camera Club '42.

MARGARET SMITH—Pep Squad '41, '42; Girl Scouts '41, '42; Girl Reserves '41; Tank '43; Cheer Leader '43.

SENIORS

ROGER SMITH—Basketball '40, '41, '42; Track '41; Hi-Y '41, '42; "C" Club '42, '43.

HAROLD SPARKS—Football '43; Track '41; Junior Play '42; "C" Club '43.

ROGER STRICKLAND—Football '42, '43; Basketball '42; Intra-mural Basketball '43; Sec of "C" Club '43; Carnival King '43.



NAOMI STURM—

ALEADA SWORDS—Drum Corps '40.

CHARLES TAYLOR—F. F. A. '40, '41, '42, '43.



J. T. THOMAS—Mystic '43.

CAROL WALKER—Chorus '42; Dramatics Play '42; Mystic '43.

BARBARA WAMSLEY—Chorus '42; Drum Corps '40, '41, '42.



JACK WARD—F. F. A. '40, '41, '42, '43.

GEORGE WARNER—F. F. A. '40, '41, '42, '43; Hi-Y '40, '41, '42; F. F. A. Vice-Pres. '43; Hi-Y Secretary '42.

LUCILLE WELLS—Chorus '42; Dramatics Play '42.



LOU GENE WHITAKER—Chorus '40, '41, '42.

Discussion Club '41; Home Ec. Club '40; Citizenship Club '40; Mystic '43; Operetta '41.

MANETHA WHITE—Intra-mural Basketball '43.

LYNN B. WITT—Band '40, '41, '42, '43; Hi-Y '42.



KEITH WOLF—Ag. Reporter '42.

ELDON WOOD—Track '41.

FRANCIS WONER—Band '40, '41; Football '40.



JUNIORS



MARY FRANCES ALLEN
 ELLA CORDELIA ARNOLD
 PEGGY JEAN ARNOLD
 ROY ATKINSON



PAULINE BARTEE
 CHARLOTTE BEATTY
 DAVID BELL
 MERLE BENSON



SHELBY BOTTS
 GERTRUDE BRAND
 DONNA JEAN BROWN
 JESSIE BRUCH



GERALD CHRISTIAN
 NEWCOMB CLEVELAND
 MELVIN COLEMAN
 FINIS CROSS



JAMES CURTIS
 DALE DIVEN
 BOB ENSIGN
 FINIS FLANDERS



VIRGINIA FORD
 ELAINE HANNA
 DOROTHY HAWKINS
 BILL HENSLEY

JUNIORS

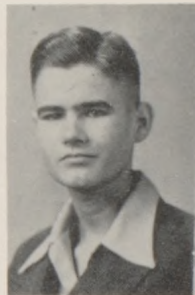
BONNIE JEAN HUBBARD
 BENNETT JENKINS
 RUTH JOHNSTON
 VERA JONES



PAUL JORDISON
 WAYNE KING
 BEVERLY LIVINGSTON
 MARY ALICE MILLER



ROBERTA MILLER
 JUNIOR MORGAN
 PETE NAUGLE
 STEVEN PUTERBAUGH



GARLAND REID
 HELEN ROONEY
 RITA SCHUELE
 BILLY SCURLOCK



FLOYD SHELMAN
 PAUL SHREVE
 JOE SLOAN
 BARBARA SMART



BETTIE JUNE SMITH
 RUTH SMITH
 MARGARET SPRAGG
 JOHN STAFFORD



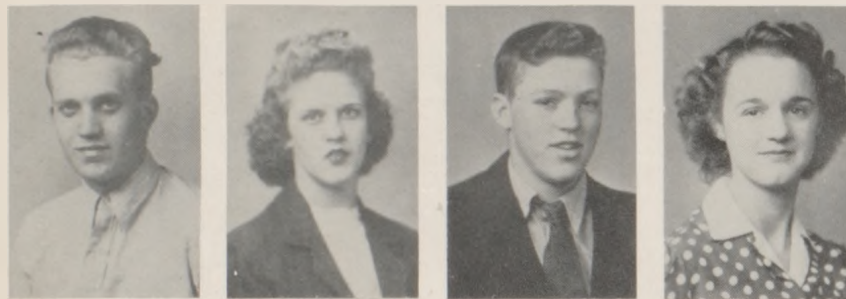
JUNIORS



GERRY STEVENS
HAZEL TAYLOR
MELVIN TAYLOR
BILLY THOMPSON



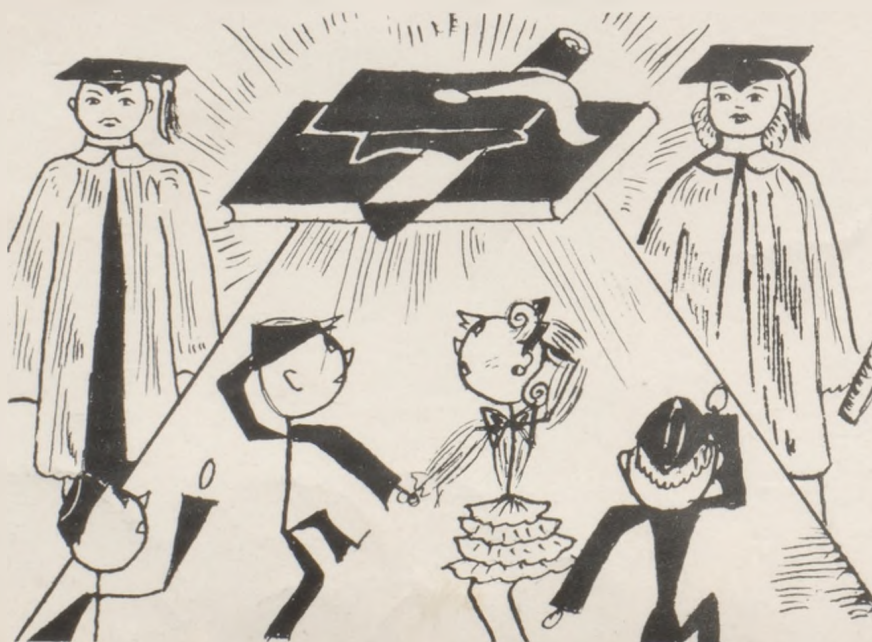
EUGENE THOMPSON
ARLINE TOFFLEMIRE
CHARLINE TOFFLEMIRE
BONNIE TUCKER



ROBERT WAGERS
ERMA WELLS
BILL WHITE
JUANITA WHITE



GEORGIA WILLIAMS
MARY JANE WILSON
IVAN WOODERSON
RETA WOOD





Row I: Logue; Totzke; Smith; Korneman; Moore; Witt; Nelson; McGrew; Mr. Baillinger,
 Row II: Walker; Munson; Wallace; VanTrump; Montgomery; Wrex; Mills; Sparks;
 Meyer; Taylor; Slayton.
 Row III: Wilson; Pemberton; Poland; Knoch; Paisley; Thomas.
 Row IV: Lewis; Scott; Zieber; Rhodes; Newby; Shreve; White.

Row I: Christian; Evers; Ellis; Gover; Barnes; Clark; Edwards; Cope; Frazier.
 Row II: Heinz; Ford, J.; Johnson; Gross; Johnston; Bowman; Fessant; Ellrick;
 Mrs. Bowman.
 Row III: Davis; Fry; Jackson, D.; Burkett; Iba; Bauer; Diamond.
 Row IV: Ensign, C.; Coon; Corn; Bayer; Ditmars; Griffin; Ensign, T.; Jackson, H.; Ford, C.



S
O
P
H
O
M
O
R
E
S

F
R
E
S
H
M
E
N



Row I: Miss Milholland; Brown; Bowers; French; Diven; Ellis; Hileman; Beatty; Bennett; Filbert.

Row II: Bradford; Green; Hopper; Curtis; Grove, M.; Becker; Grove, M.

Row III: Daeffler; Byers, B.; Dice; Elliott; Davis; Byers, E.

Row IV: Elder; Coots; Curtis; Drown; Barry; Hunt; Conklin; Bell.

Row 1: Wiggins; Sloan, D.; McCoy; Wilcox; Wallace; Shelman; Sears; Mr. Dowell.

Row II: Orr; Sloan, B.; Nelson; Spurlock; Troxell; Vernon; Larkam; Slates.

Row III: Thompson, B.; Thompson, J.; Moore; Spragg; Potter.

Row IV: Larkam, J.; Souders; Wedlock; Sindt; Packard; O'Donnell; Jones.





DEPARTMENTS

In our Corps area - Cameron High School - the heads of all departments cooperate efficiently with the Board of Strategy in training the rookies.

The work of the Signal Corps, Artillery and Chemical Warfare divisions in making military plans is assumed by the Mathematics and Science Departments.

Supplying food and clothing and carrying out business transactions is the task of the Quartermaster Corps - the Vocational Home Economics and the Agriculture Departments and the Commercial Department.

The infantry, or footwork division, the band and the drum and bugle corps, practice intricate maneuvers.

Rangers, a new part of the army, get their training in the Physical Education division.

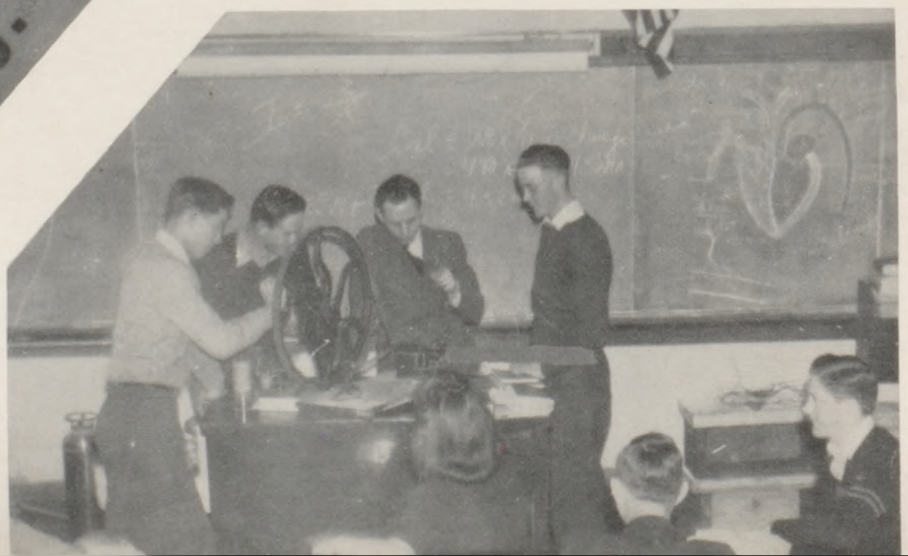
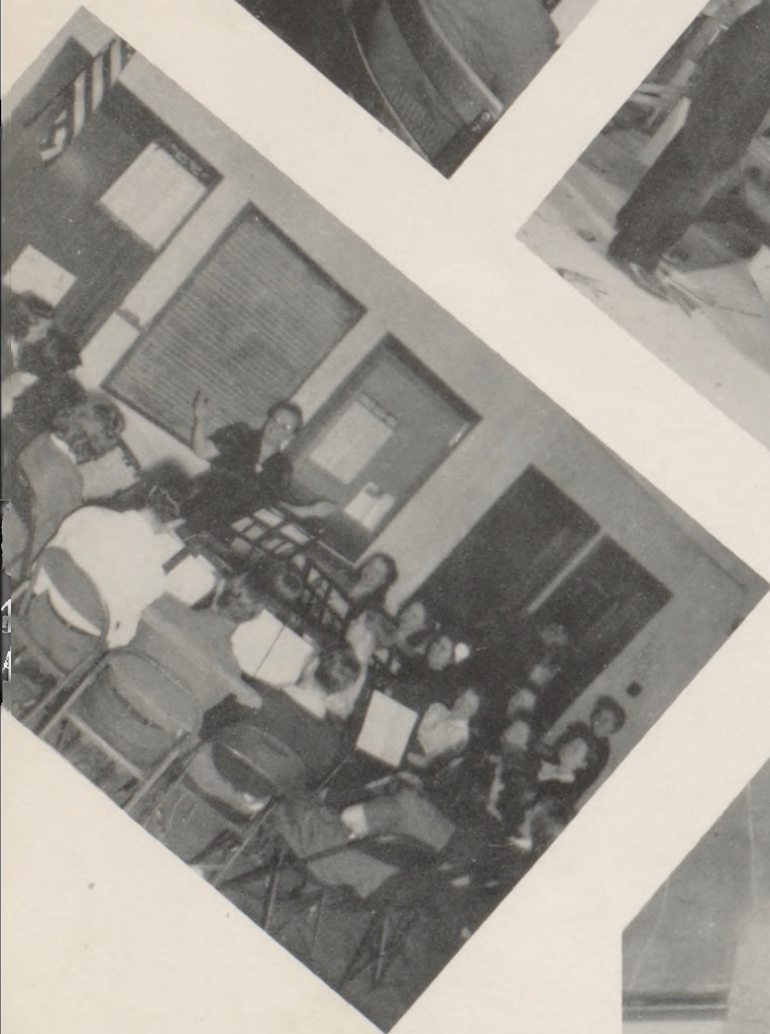
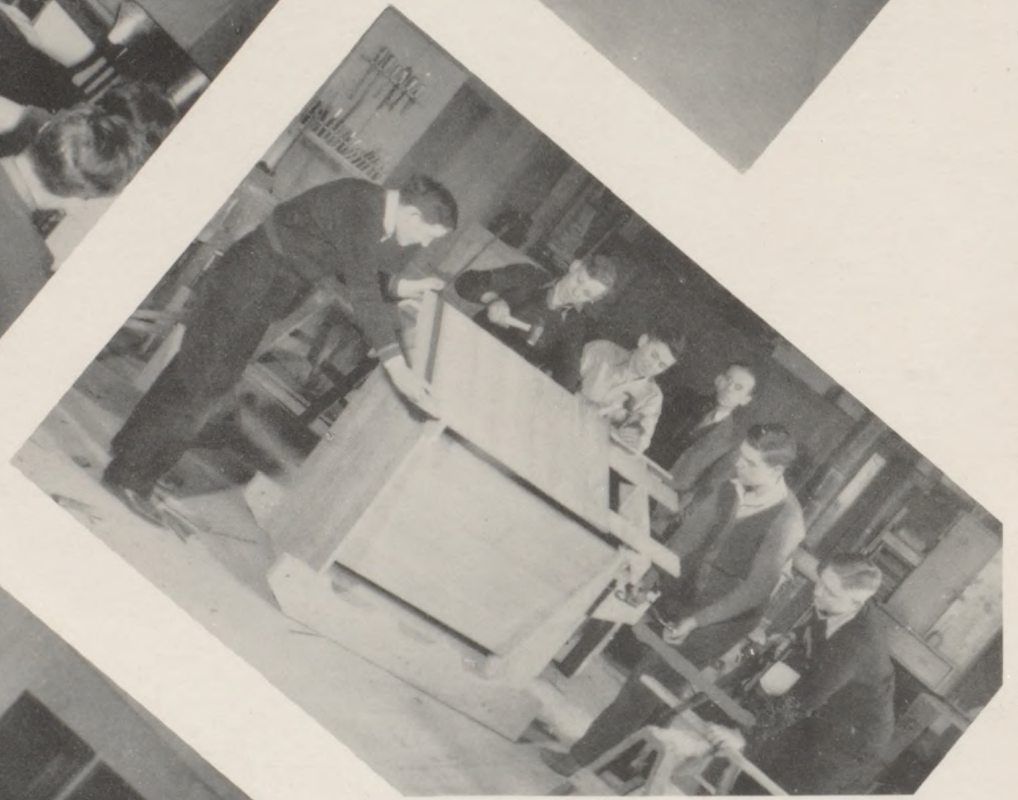
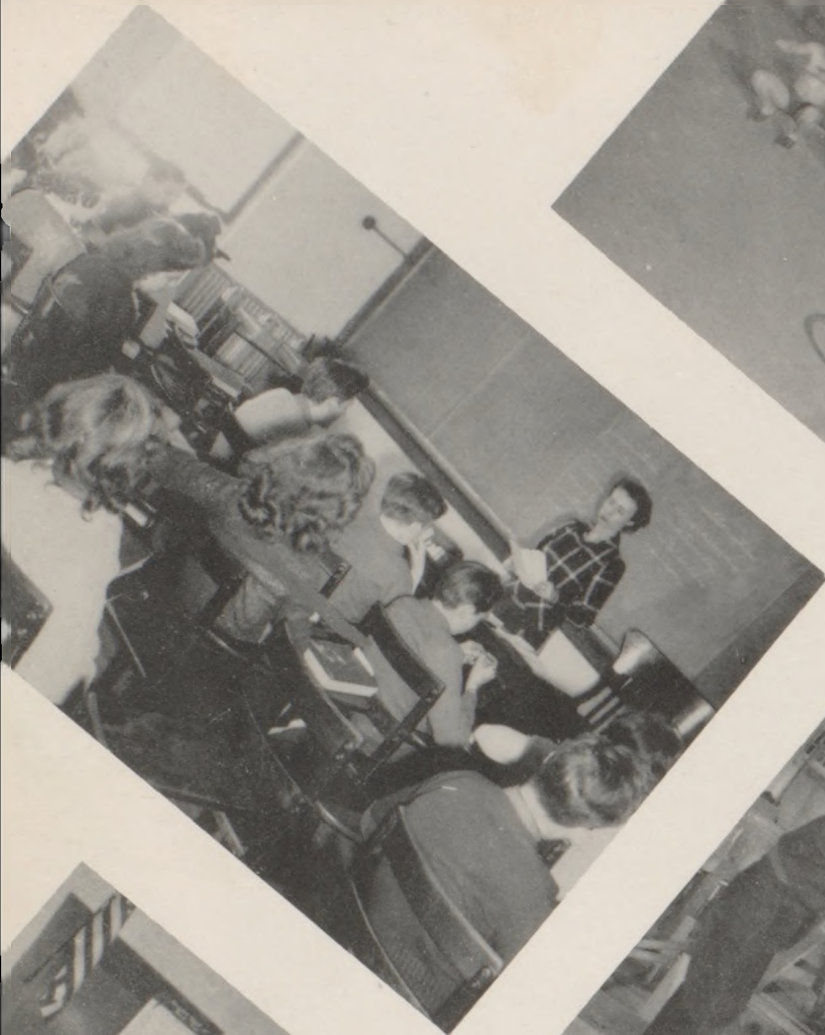
Legal matters are discussed in the Judge Advocate division of our army - the social science classes.

A very important part of our army is the Paymaster or Finance Department. Officers are paid by the Admiral from allotments made by the Board of Strategy.

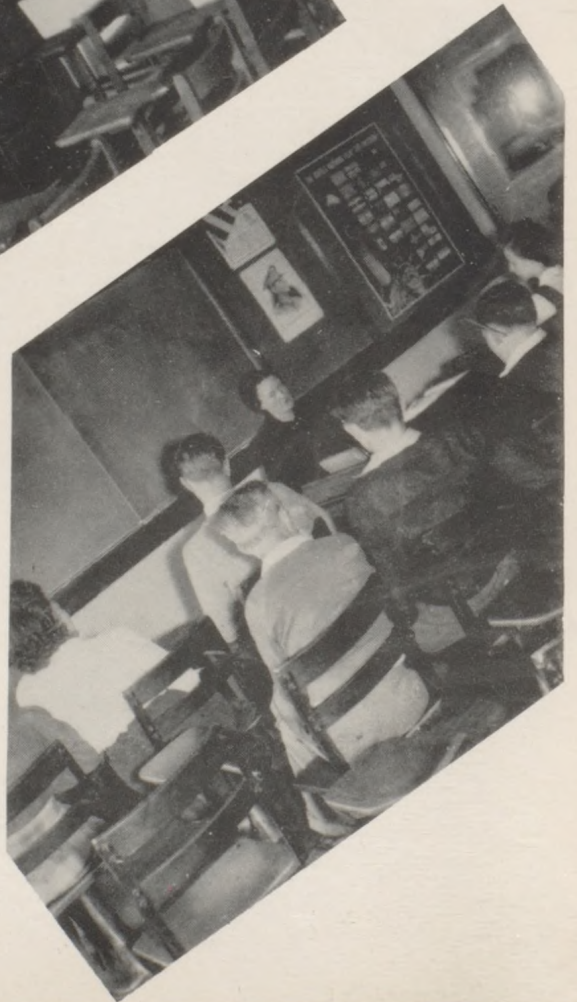
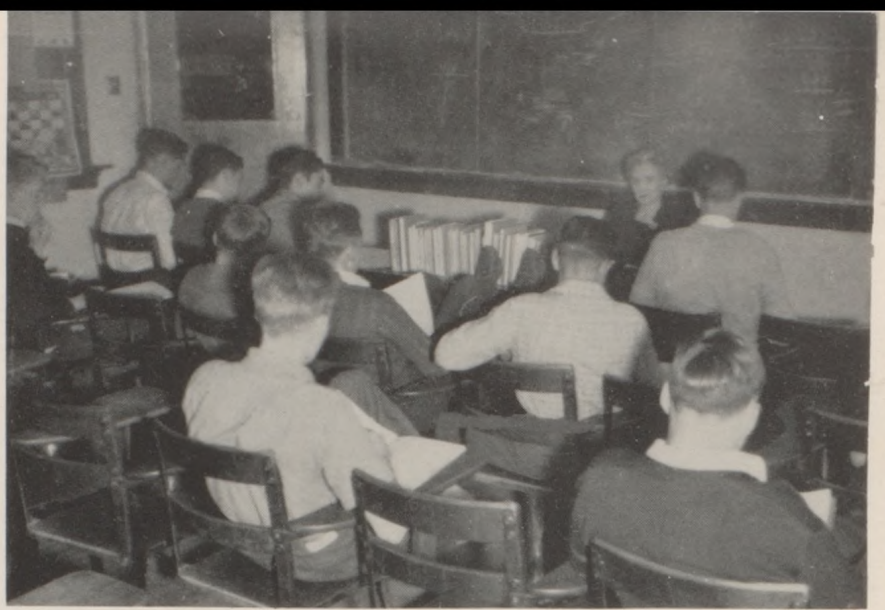
The division which causes anxious concern in any army is the Military Police. So it is in our corps area. Our general and his aide do not wear arm bands with the forbidding letters "M. P.", but nevertheless, it is not wise to infringe upon the rules or go "A. W. O. L."

All departments coordinate their efforts into a perfectly synchronized whole to carry out the plans of the Board of Strategy.











FEATURES

Although activities are not a part of the military training of any corps area, they are important to a soldier's morale.

Our football and basketball teams play those from other corps areas. Those who excel in these sports become members of the "C" Club, honorary service organization. The U.S.O. and canteens entertain with dances, carnivals and plays. Some soldiers supplement their regular training by joining service clubs—the Boy Scouts and the F. F. A. Our WAACS and WAVES—the Girl Reserves, Girl Scouts, Dragonettes, and Cheer Leaders—help the boys. The official publications of our corps area are the Tank and the Mystic.

All drill and no fun makes Johnny Doughboy dull so here's to more activities!



G
I
R
L
F.
F.
R
E
S
E
R
V
E
S
A.

F. F. A.

Row I—Shreve, W.; Benson, M.; Sloan, J.; Jackson, H.; Griffin, K.; Warner, G.; Close, D.

Row II—Packard, F.; Barry, R.; Jackson, D.; Zieber, K.; Rhodes, D.; Coats, L.; Sloan, D.

Row III—Eurkett, D.; Ensign, K.; Berryman, F.; Robison, W.; Christian, G.; Duncan, D.

Row IV—Taylor, M.; Puterbaugh, S.; Ward, J.; Shreve, P.; Wagers, B.; Pickett, A.

GIRL RESERVES

Row I—Miss Milholland; French, L.; Stevens, G.; Shaver, A.; Arnold, C.; Schlorff, V.; Russell, E.; Grove, B.; Miss Hunt.

Row II—Williams, G.; Sheller, M. B.; Kerr, M. J.; Tofflemire, C.; Tofflemire, A.; Baker, D.; Johnston, R.; Spragg, M.

Row III—Baxter, L.; Ellis, B.; Arnold, P.

Row IV—Bunnell, R.; Billings, B.; Tucker, B.; Brand, G.; Flanders, F.; Smart, B.





DRAGONETTES

Row I—Miss Milholland; Spragg, M.; Totzke, M. L.; Smith, M.; McCoy, R. J.; Williams, G.; Ellis, D. M.; Miss Kroencke.

Row II—Bowers, J.; French, D.; Diven, L. J.; Logue, J.; Wiggins, V.; Stevens, G.; Iba, B.; Witt, D.; Livingston, B.

Row III—Russell, E.; Baxter, L.; Schlorff, V.; Grove, M.; Heinz, P.; Ford, J.; Johnston, R.

Row IV—Grove, M.; Munson, B.; Beatty, C.; Bunnell, R.; Billings, B. G.; Ellis, B. B.

DRAGONETTES
LEADERS
CHEER



Ruby Jean McCoy



Georgia Ruth Williams



Mary Lou Totzke



Margaret Emma Smith



[Illegible]



[Illegible]

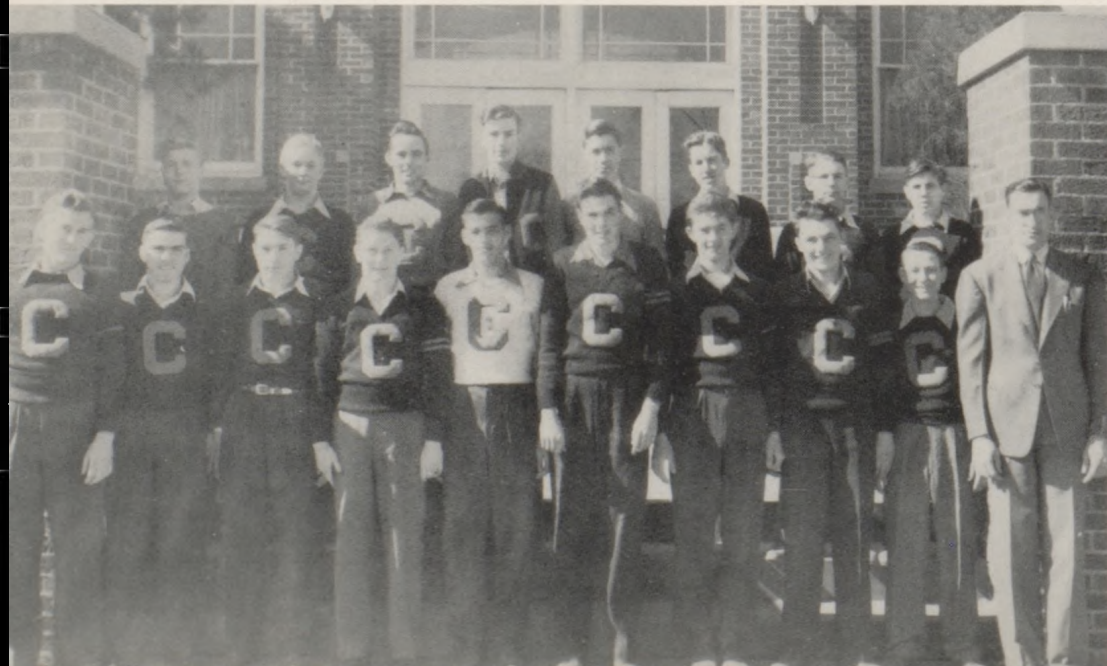


GIRL SCOUTS

Row I: Logue, J.; Brown, E. J.; French, D.;
Bowers, J.; Ellis, D. M.; Diven, L. J.
Row II: Robinett, M. F.; Ford, J.; Heinz,
P.; Becker, E.; Smith, W.; Munson, B.

BOY SCOUTS

Row I: Beatty, G.; Ford, C.; Sears, R.;
Larkam, D.; Frazier, J.
Row II: Larkam, J.; Curtis, C.; Graham, F.;
Corn, J.; Pemberton, G.



"C" CLUB

Row I—Sparks, H.; Cole-
man, M.; King, W.; Kern-
per, B.; Muders, A.; Strick-
land, R.; McAnaw, E.;
Pickett, A.; Morgan, B.;
Mr. Dowell.

Row II—Jukes, E.; Jack-
son, D.; Pickett, D. P.;
Smith, R.; Norland, E.;
Paisley, B.; Hughes, B.;
Graham, F.

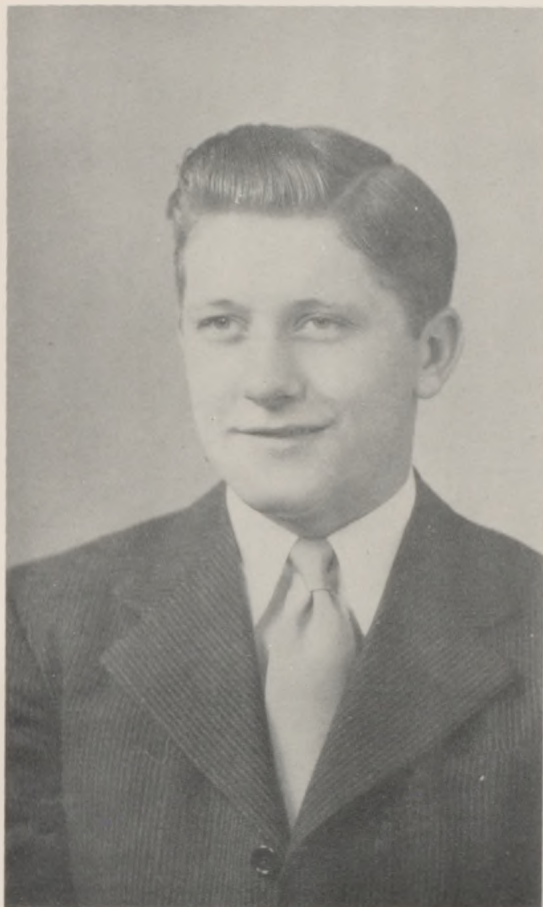
THE TANK

VOLUME XXIII

CAMERON, MISSOURI, FEBRUARY 15, 1943

NO. 11

TANK KING



BILL KEMPER

KEMPER AND SMITH TANK KING AND QUEEN

At the annual TANK election held Monday, February 8, Bill Kemper and Margaret Smith were chosen TANK king and queen. Others sharing honors were:

Junior Prince: Pete Naugle

Junior Princess: Georgia Williams

Sopomore Count: Gene Pember-ton

Sophomore Countess: Mary Lou Totzke

Peppiest Student: Georgia Williams

Laziest Student: Hugh Smith.

Friendlist Boy: Bob Gover.

Friendliest Girl: Lillian French

Couple most desperately in love: Gerry Stevens and Alton Pickett

Best Pals (Girls): Betty Billings and Reta Bunnell

Best Pals (Boys): Bill Kemper and Ed. McAnaw

Teachers' Pet: June Brown

Chewiest Gum Chewer: Elizabeth Becker

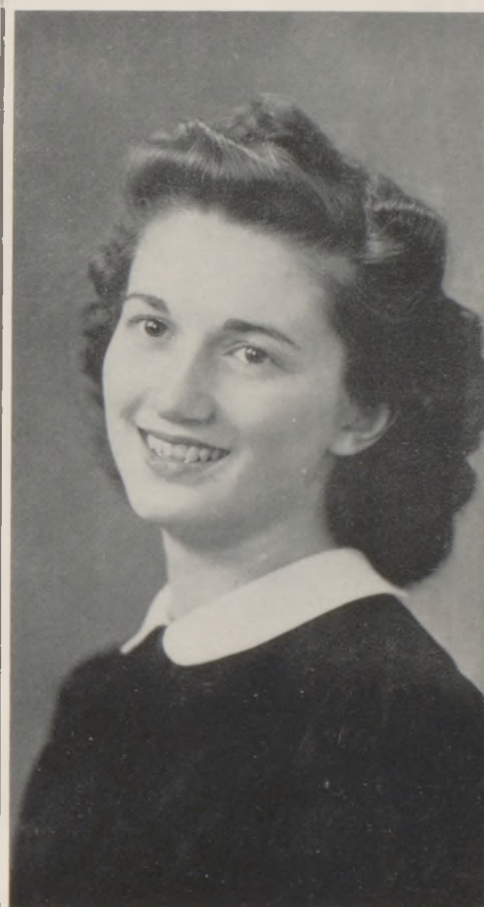
Biggest Flirt: Georgia Williams

Noisiest Student: Margaret Spragg.

Giggliest Giggler: Georgia Williams

Best Dancers (Couple): Ruby McCoy and Don Diven.

TANK QUEEN



MARGARET SMITH

THE STAFF

Editor-in-

Chief.....Mary Frances Johnson

Copy

Reader... Lillian French

Proof

Reader... Margaret Emma Smith

Exchange

Editor.....Ruby Jean McCoy

Circulation

Dist.

Manager..Betty Bouton Ellis

Make-up

Editor.....Lois Jean Baxter

Sports Dick Poland

Editors... Bob Gover

Reporters...Francis Clark

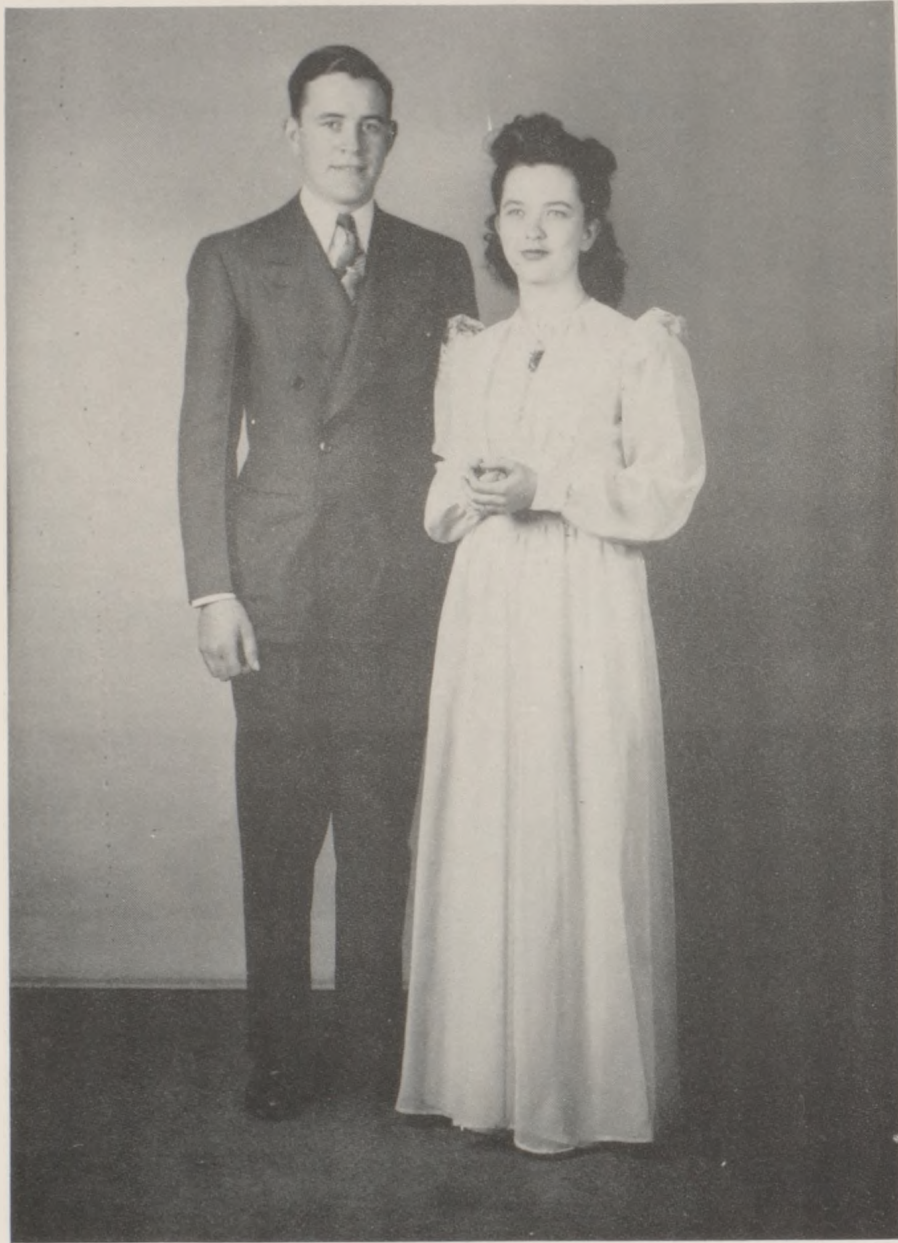
Anna B. Shaver

Sponsor... Miss Vera Kroencke



MYSTIC KING

MYSTIC QUEEN



ROBERT GOVER

LILLIAN FRENCH



MYSTIC STAFF

Editor-in-Chief	Lillian French
Associate Editors	(Mary Frances Johnson (Robert Gover
Junior Editor	Gerry Stevens
Feature Editor	Della Mae Baker
Class Editor	Lou Gene Whitaker
Art Editors	(J. T. Thomas (Carol Walker (June Brown
Club Editor	Ruby Jean McCoy
Department Editor	Don Duncan
Sports Editor	Dallas Pickett
Business Manager	Earl Jukes
Associate Business Manager	Melvin Coleman
Photographers	(Uhl Sackman (Tom McAllen

ATHLETICS

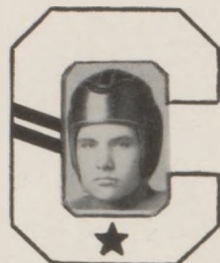
FOOTBALL



D. Jackson
5'8" 195 lb.
Guard



Co-Capt. B. Kemper
5'7" 150 lb.
Back



Co-Capt. A. Pickett
5'10" 170 lb.
Tackle



D. Poland
5'7" 185 lb.
Guard



M. Coleman
5'6" 155 lb.
Back



D. Pickett
5'11" 160 lb.
End



B. Paisley
5'10" 150 lb.
End



R. Strickland
6'2" 170 lb.
End



E. McAnaw
5'11" 170 lb.
Back



E. Norland
6' 165 lb.
Tackle



H. Sparks
5'9" 150 lb.
End



B. Gover
5'10" 155 lb.
Back



W. King
5'7" 155 lb.
Center



A. Muders
5'10 165 lb.
Tackle



E. Jukes
5'9" 150 lb.
Back



F. Graham
5'7" 145 lb.
Back



L. Murphy
5'7" 130 lb.
Back



B. Hughes
5'8" 155 lb.
Guard



B. Morgan
5'5" 130 lb.
Back



G. Shirts
6' 140 lb.
End



K. Knoch
5'10 135 lb.
Center



P. Naugle
5'10" 145 lb.
End



B. Poland
5'8" 135 lb.
Back



J. Thompson
5'7" 155 lb.
Guard

BASKETBALL



G. Gaede
Forward



E. Jukes
Forward



Capt. B. Kemper
Guard



E. McAnaw
Guard



G. Spragg
Center



E. Norland
Center



COACH DOWELL



T. Ensign
Guard



K. Knoch
Forward

INTRAMURAL BASKETBALL

FINAL STANDINGS

TEAM	-	-	-	W.	L.	P.	OP.
Ramblers	-	-	-	7	1	124	63
Rangers	-	-	-	6	2	140	58
Eagles	-	-	-	5	2	105	53
Flying Tigers	-	-	-	4	3	82	95
Jeeps	-	-	-	2	5	66	95
Stinkers	-	-	-	2	5	56	78
Yanks	-	-	-	2	5	48	93
Wildcats	-	-	-	1	6	54	105

TEAMS

RAMBLERS

B. Gover Capt.
F. Berryman
G. Spragg
J. Brady
B. Paisley
M. Benson
J. Thompson
T. McAllen

RANGERS

U. Sackman, Capt.
K. Ensign
F. Shelman
W. King
M. Murphy
G. Christian
P. Shreve
R. Hileman

EAGLES

D. Pickett, Capt.
A. Muders
E. Mattox
Dale Diven
F. Woner
M. Taylor
J. Frazier
M. Sindt

FLYING TIGERS

F. Graham, Capt.
O. Heldenbrand
M. White
H. Edwards
B. White
R. Atkinson
D. Close
B. Hensley

JEEPS

B. Morgan, Capt.
R. Smith
A. Pickett
C. Bell
C. Orr
H. Sparks
J. Stafford
H. Smith

STINKERS

B. Poland, Capt.
M. Coleman
G. Pemberton
B. Ford
D. Sloan
M. Scott
C. Taylor
H. Lewis

YANKS

R. Strickland, Capt.
J. Corn
B. Ensign
B. Hugges
K. Griffen
L. Sloan
C. Coldwell
H. Moore

WILDCATS

G. Beatty, Capt.
D. Diven
I. Wooderson
C. Ensign
L. Murphy
E. Gauden
D. Newby
C. Hansen

MARCHING BAND



DRUM CORPS



PEP BAND





"DON'T TAKE MY PENNY"
Presented By
The Senior Class
April 16, 8:00 p. m.
Goodrich Auditorium



THE JUNIOR CLASS

Presents

"FOOT-LOOSE"

A Comedy

By

Charles Quimby Burdett

November 24, 8:00 p. m.

Goodrich Auditorium



THRU
THE
YEARS



6th Grade, Half Way Up



1st Grade



3rd Grade



2nd Grade



1938



4th Grade



