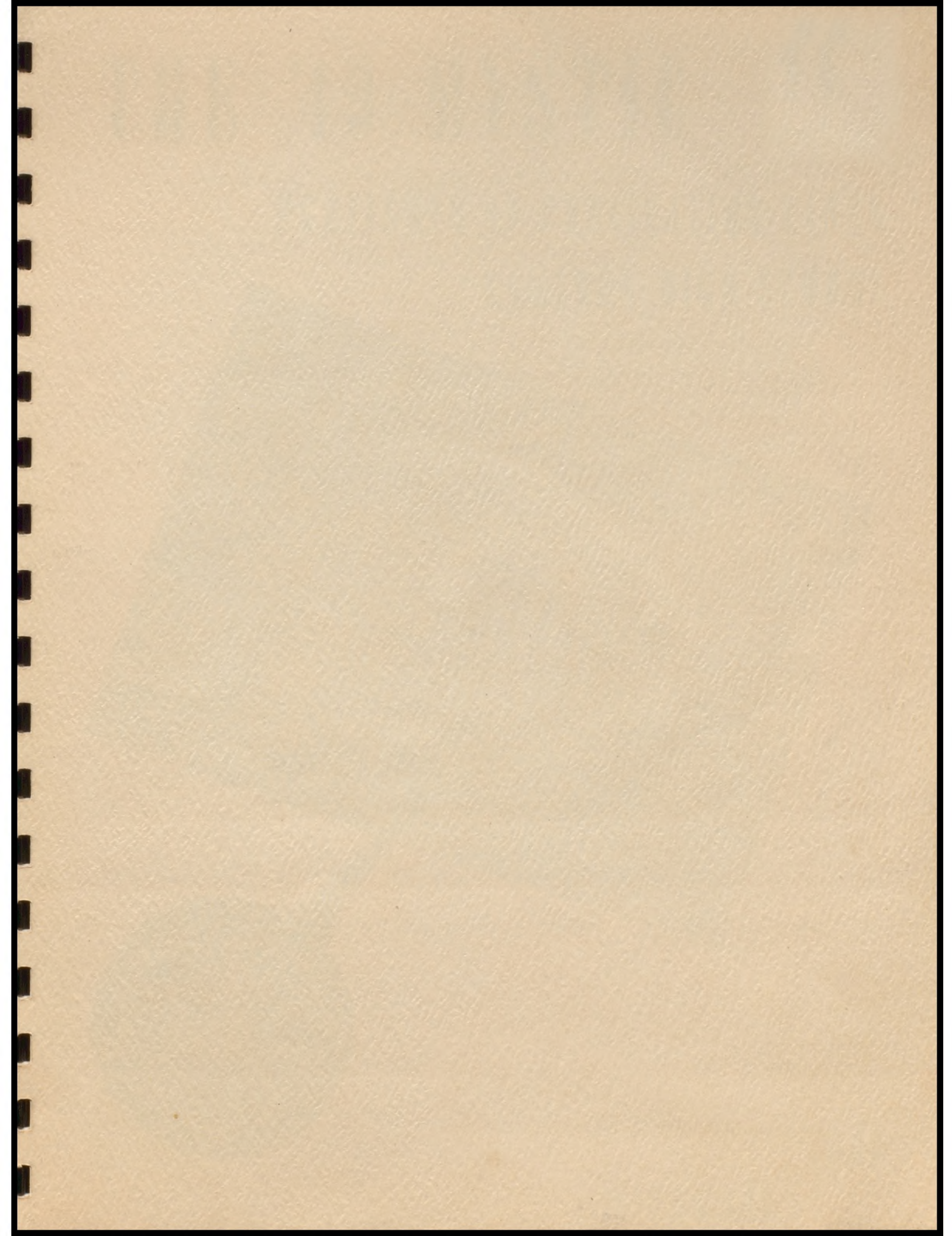
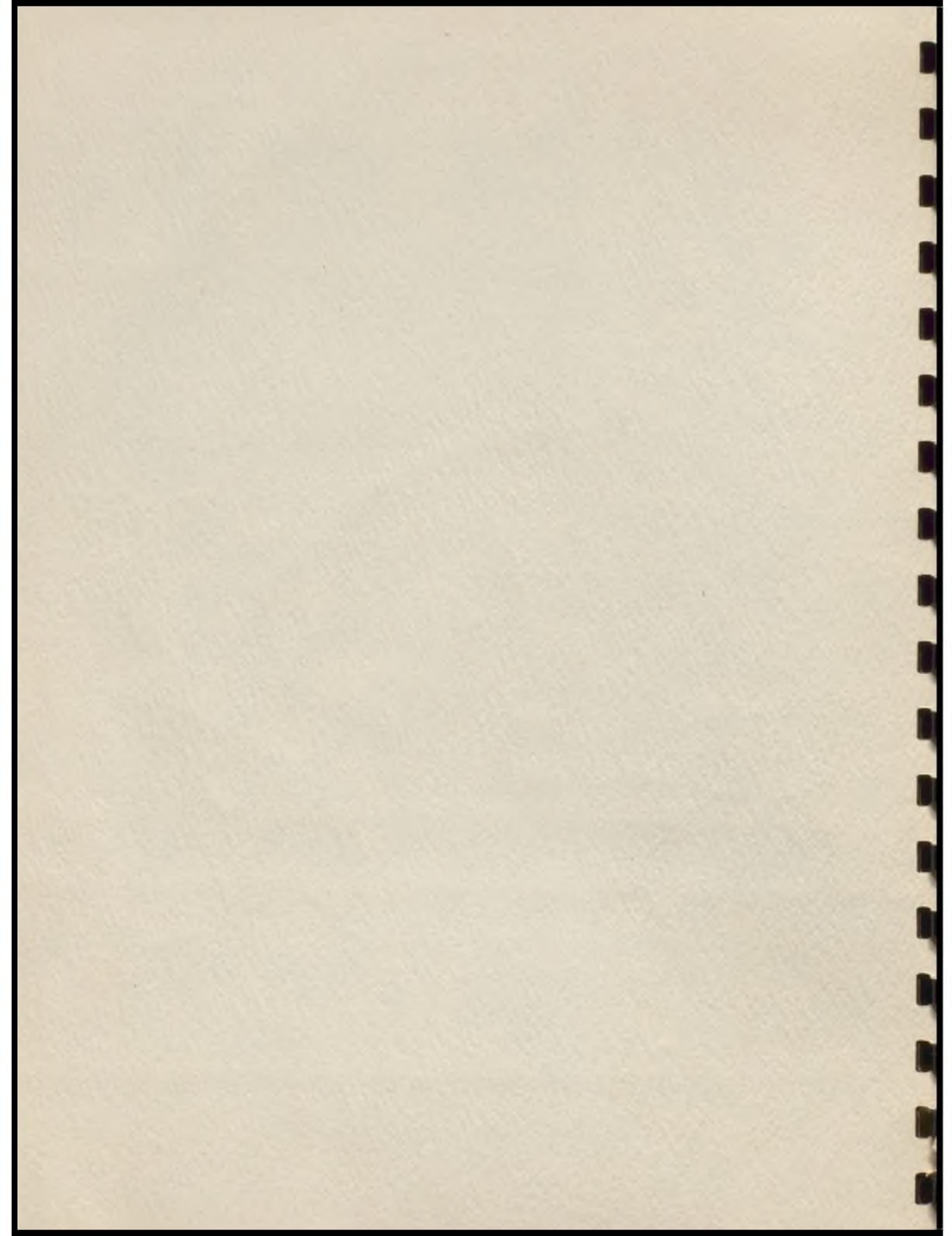




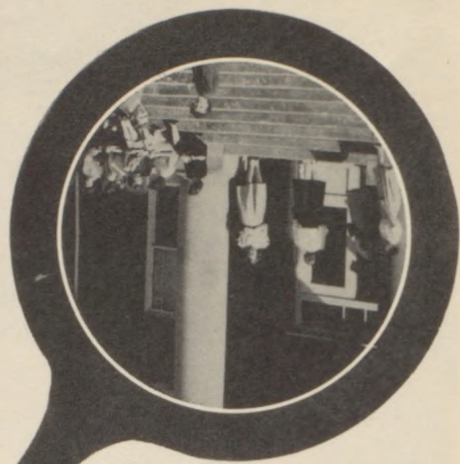
**THE MYSTIC 1949**







CAMERON MISSOURI



CAMERON HIGH SCHOOL

PUBLISHED BY PUBLICATION CLASS

THE '49 MYSTIC

# ALMA MATER



## HIGH SCHOOL SONG

A song of Missouri wide  
A song of our city strong  
A song of our school, our joy and pride  
Our high school's dear song.

### Chorus

High school, high school  
We love thee well  
Ours is the joy, thy praise to swell  
With voices free, we'll sing of thee  
And ever thy praise we'll tell.

# ADMINISTRATION



**BOARD OF EDUCATION**

Left to Right—Principal, Donald Cox; Dr. I. D. Kimes; Mr. Ross Nickell; Superintendent, J. O. Teasley; Mr. Gerald Davis; Mr. Harold Galpin; Mr. Charles Groom; Mr. J. B. Beavers; Mr. Quincy Kemper.



**J. O. TEASLEY**  
Superintendent



**DONALD M. COX**  
Principal  
Citizenship

# FACULTY



**MRS. QUILEY BLANKENSHIP**  
Commerce

**MRS. THOMAS DEEM**  
History



**RUSSELL DOWELL**  
Coach  
Industrial Arts  
Physical Education

**MRS. MICHAEL DRITCH**  
English  
Publication  
Consumers Education



**JUANITA FORD**  
Physical Education  
Second Semester

**CHARLES HILL**  
Vocational Agriculture



**MRS. CURTIS HOLLAND**  
Physical Education  
First Semester

**MARY KLEPPER**  
Librarian



# FACULTY

**FAUNA OVERLAY**

English  
Speech  
Dramatics

**NEOLA POLLARD**

Vocational Home Economics  
M. U. Teacher—Trainer

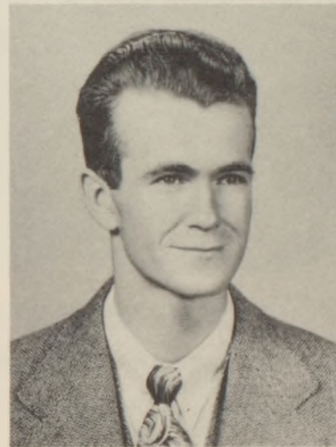


**VANCE RIFFIE**

Music

**MRS. HENRY TOTZKE**

Mathematics

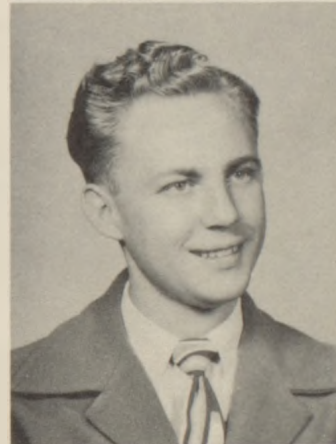


**TED WEICHINGER**

Science

**PEGGY MORGAN**

Secretary To Principal



**FLORA MAE SCHUELE**  
Secretary To Superintendent



# STUDENT COUNCIL



STUDENT COUNCIL OFFICERS

First Row—Vice-President, Jack Hill; President, Bob Bell; Treasurer, Betty Jo Bowers.

Second Row—Sponsors, Mrs. Totzke, Mr. Riffie.



STUDENT COUNCIL

First Row—Maryln Kenney, Marian Bowman, Bob Bell, Jack Hill, Betty Jo Bowers, Delores Mattson, Mona Livingston.

Second Row—Spncsor, Mr. Riffie, Earl Grimes, Charles Ocker, Bob McKee, Henry Totzke, Bob Hatcher, Max Jackson, Sponsor, Mrs. Totzke.

# MYSTIC STAFF



EDITORS OF MYSTIC

First Row—Art Editor, Betty Jo Bowers; Typist, Joyce Whiteaker; Ass't Editor, LuEtta Wilford; Editor, Marjorie Lewis; Business Manager, Allie Deem, Photographer, Dolores Packham.

Second Row—Feature Editor, Regina Mallen; Class Editor, Marjorie Swindler; Literary Editor, Maryln Kenney; Sponsor, Mrs. Dritch.

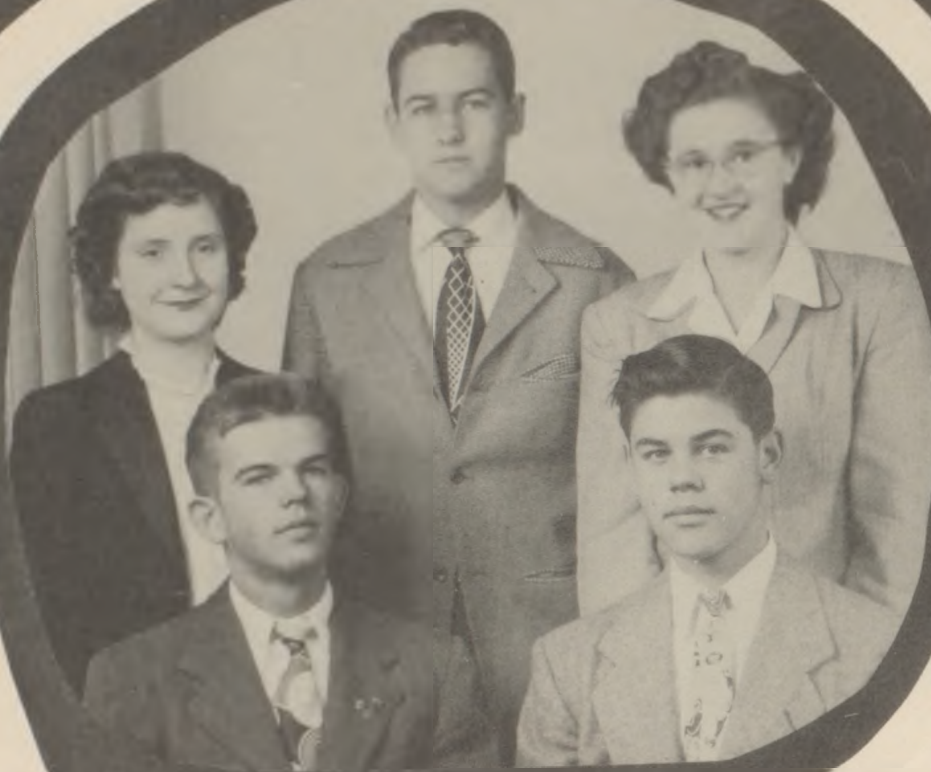


MYSTIC STAFF

First Row—Regina Mallen, Joyce Whiteaker, LuEtta Wilford, Marjorie Lewis, Allie Deem, Dolores Packham, Eileen Jones, Wilma Stinson, Betty Jo Bowers, Roger Tunks, Barbara Bruch.

Second Row—Dixie Asher, Ina Belle Sloan, Lila Tripp, Jean Hubbard, Marjorie Swindler, Oma Lee Curtis, Loraine Farney, Alice Gross, Betty Groves, Maryln Kenney, Gladys Taylor, Buddy Lane, Jack Smart, Sponsor, Mrs. Dritch.

Third Row—Leslie McWilliams, Don Jones, Donald Heidenbrand, Lemuel Lampkins.



**SENIOR CLASS OFFICERS**

First Row—President, Jack Hill; Reporter, Arthur Bennett.  
Second Row—Secretary, Monica Murphy; Vice-President, Richard DeFreece; Treasurer, Barbara Cclby.

**ENIORS**

# SENIORS

DIXIE ASHER—Girls Glee Club '46-'47, '48-'49; Publication '48-'49; F. H. A. '46-'47, '48-'49; Y-Teens '46-'47.

LEE AUSTIN—F. F. A. '45-'46, '46-'47, '47-'48; "C" Club Vice Pres. '46-'47, '47-'48, '48-'49; Mixed Chorus '46-'47; A Cappella Choir '46-'47, '47-'48, '48-'49; Basketball '45-'46, '46-'47; Football '45-'46, '46-'47, '47-'48, '48-'49; Track '45-'46, '46-'47, '47-'48; Male Quartet '48-'49.

BOB BELL—Freshman Vice Pres., Sophomore Vice Pres., "C" Club '47-'48, Pres. '48-'49; Band '45-'46; Pep Band '45-'46; Junior Prince; Basketball '45-'46, '46-'47, '47-'48, '48-'49; Football '45-'46, '46-'47, '47-'48, '48-'49; Track '45-'46, '46-'47, '47-'48, '48-'49; Boy's State '48; Scouts '45-'46, '46-'47, '47-'48; Pres. Student Council '48-'49.

ARTHUR BENNETT —F. F. A. '45-'46, '46-'47, Sentinal '47-'48, Vice Pres. '48-'49; Junior Vice Pres.; Senior Reporter; Band '45-'46, '46-'47, '47-'48, '48-'49; Pep Band '45-'46, '46-'47, '47-'48, '48-'49; Brass Sextet '47-'48; Basketball '45-'46, '46-'47; Football '45-'46, '46-'47, '47-'48, '48-'49; Scouts '45-'46, '46-'47, '47-'48, '48-'49; Student Council '47-'48, '48-'49.

NORMA JEAN BLACKETER—Band '45-'46, '46-'47, '47-'48, '48-'49; Pep Band '45-'46, '46-'47, '47-'48, '48-'49; A Cappella Choir '47-'48, '48-'49; Quartet '47-'48, '48-'49; Sextet '47-'48; Triple Trio '46-'47, '47-'48; Girl's State '48; Junior Play '47-'48; F. H. A. Sec. '46-'47, '47-'48, Pres. '48-'49; Y-Teens '46-'47, Sec. '47-'48, Pres. '48-'49; Volley Ball '46-'47.

BETTY JO BOWERS—Freshman Treas.; Girls Glee Club '45-'46; Dragonettes '46-'47, '47-'48, Sec. '48-'49; Publication Ass't Editor of Tank '48-'49; Student Council Treas. '48-'49; Drum and Bugle Corps '45-'46; Junior Play '47-'48; F. H. A. '46-'47, '47-'48, District Sec. '48-'49; Tarkio Contest '47-'48; Chillicothe Contest '47-'48; Y-Teens '46-'47, '47-'48, '48-'49.

LUCY BOYLES—Enter from Lathrop '48; Girls Glee Club '48-'49; F. H. A. '48-'49; Y-Teens

VIRGINIA ANNE BRATCHER—A Cappella Choir '48-'49; F. H. A. '46-'47, '47-'48; Y-Teens '46-'47, '47-'48, '48-'49; Drum and Bugle Corps '45-'46, '46-'47, '47-'48.

BARBARA BRUCH—A Cappella Choir '48-'49; Girls Glee Club '48-'49; Band '45-'46, '46-'47, '47-'48, '48-'49; F. H. A. '46-'47, '47-'48, Sec. and Treas. '48-'49; Publication '48-'49.

KENNETH CHRISTENSEN—F. F. A. '45-'46.

BARBARA MAE COLBY—Senior Treas.; Band '45-'46, '46-'47, '47-'48, '48-'49; F. H. A. '46-'47.

MARILYN COLLIER—Band '45-'46; Sophomore Attendant; Sophomore Countess; Junior Princess; A Cappella Choir '47-'48, '48-'49; Triple Trio '47-'48; Dragonettes '45-'46, Sec. '46-'47, '47-'48, Pres. '48-'49; Drum and Bugle Corp '46-'47, '47-'48; Cheer Leader '45-'46, '46-'47, '47-'48, '48-'49; F. H. A. '46-'47, '47-'48; Y-Teens

OMA LEA CURTIS—A Cappella Choir '47-'48, '48-'49; Publication '48-'49; Drum and Bugle Corps '47-'48; F. H. A. '46-'47.

ALLIE DEEM—Band '45-'46, '46-'47, Sec. '47-'48, '48-'49; Pep Band '45-'46, '46-'47, '47-'48, '48-'49; Publication '48-'49; Editor of Tank '48-'49; Student Council '45-'46; Junior Play '47-'48; F. H. A. '46-'47, '47-'48; Historian '48-'49; Pres. of Sub-District '47-'48; Citizenship Award '46-'47; Tarkio Contest '47-'48; Y-Teens '46-

RICHARD DeFREECE—Senior Vice Pres.; "C" Club '47-'48, '48-'49; A Cappella Choir '46-'47, '47-'48, '48-'49; Football '45-'46, '46-'47, '47-'48, '48-'49.

PATTY ANN DIVEN—Sophomore Treas.; Band '45-'46, '46-'47, '47-'48, '48-'49; A Cappella Choir '46-'47, '47-'48, '48-'49; Pep Band '45-'46, '46-'47, '47-'48, '48-'49; Triple Trio '46-'47; Sextet '46-'47, '47-'48; Trio '46-'47; Y-Teens '46-'47.

MARSHALL ELSTON—Drivers Education '48-'49

LORAIN FARNEY—Entered from Sarcoxie High School '47-'48; Publication '48-'49; F. H. A. '47-'48.



# SENIORS

MARILYN J. GOODMAN—Publication '48-'49; Y-Teens '47-'48.

MARY J. GRACE—Girls Glee Club '45-'46; F. H. A. '46-'47, '47-'48, '48-'49; Y-Teens '47-'48, Sec. '48-'49.

SHIRLEY J. GRACE—Girls Glee Club '45-'46; F. H. A. '46-'47, '47-'48, '48-'49; Y-Teens '47-'48, Vice Pres. '48-'49.

A. J. GRAHAM—F. F. A. '48-'49; "C" Club '46-'47, '47-'48, '48-'49; Football '45-'46, '46-'47, '47-'48, '48-'49; A Cappella Choir '47-'48; Basketball '45-'46, '46-'47, '47-'48; Track '45-'46, '46-'47.

FRED GRIMES—A Cappella Choir '48-'49; Basketball '45-'46, '46-'47, '47-'48, '48-'49; Football '45-'46, '46-'47, '47-'48, '48-'49; Track '45-'46, '46-'47, '47-'48, '48-'49; Scouts '45-'46, '46-'47, '47-'48, '48-'49; Junior Play '47-'48.

ALICE GROSS—Girls Glee Club '46-'47, '48-'49; Triple Trio '46-'47, '48-'49; Dragonettes '45-'46, '46-'47, '47-'48, '48-'49; Publication '48-'49; F. H. A. '46-'47, Vice Pres. '47-'48, '48-'49; Y-Teens '46-'47, '47-'48, '48-'49; Student Council '47-'48.

BETTY GROVES—Girls Glee Club '46-'47, '48-'49; A Cappella Choir '46-'47, '47-'48, '48-'49; Sextet '46-'47; Publication '48-'49; Junior Play '47-'48; F. H. A. '46-'47, '47-'48, Reporter '48-'49; Y-Teens '46-'47, '47-'48, '48-'49.

ELDON HAWKINS—Junior Pres.; Sophomore Count; Basketball '45-'46; Football '45-'46, '46-'47; Scouts '44-'45; Student Council '46-'47.

DONALD HELDENBRAND—F. F. A. '46-'47, '47-'48, '48-'49; Publication '48-'49.

JACK HILL—F. F. A. '45-'46, '46-'47, '47-'48, '48-'49; Senior Pres.; "C" Club '47-'48, '48-'49; Band '45-'46, '46-'47, '47-'48, '48-'49; A Cappella Choir '47-'48, '48-'49; Brass Sextet '47-'48; Pep Band '45-'46, '46-'47, '47-'48, '48-'49; Basketball '46-'47, '47-'48, '48-'49; Boy's State '48; Student Council '45-'46, '46-'47, Treas. '47-'48, Vice Pres. '48-'49; Junior Play '47-'48.

JEAN HUBBARD—Entered from Lawson '48-'49; Band '48-'49; Girls Glee Club '48-'49; Publication '48-'49.

LOUISE HUTTON—Girls Glee Club '48-'49; A Cappella Choir '47-'48, '48-'49; Drum and Bangle Corps '46-'47, '47-'48; F. H. A. '46-'47, '47-'48, '48-'49.

DON JONES—Football '45-'46, '46-'47; Track '46-'47; Publication '48-'49; Scouts '45-'46, '46-'47.

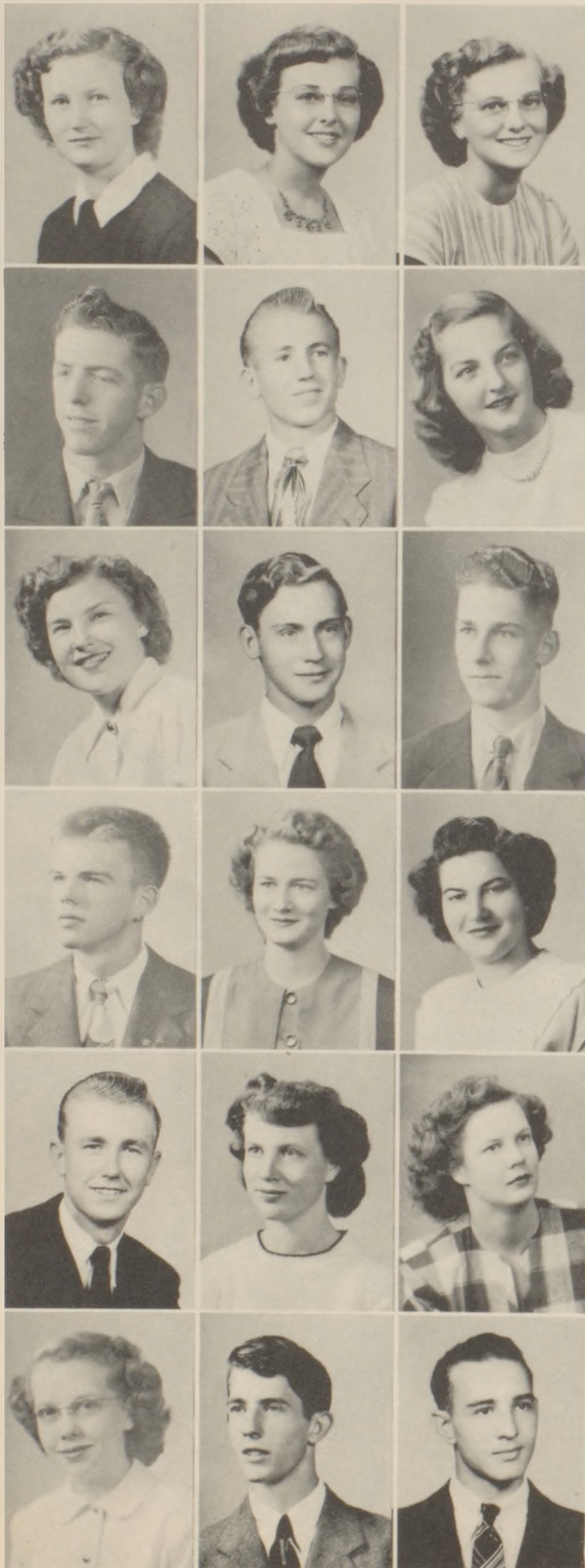
EILEEN JONES—Publications '48-'49; F. H. A. '47-'48.

RITA KENNEDY—Entered from St. Rita's '47-'48; Junior Treas.; Girls Glee Club '48-'49; A Cappella Choir '47-'48.

MARYLN KENNEY—Girls Glee Club '45-'46, '46-'47, '47-'48, '48-'49; A Cappella Choir '46-'47, '47-'48, '48-'49; Sextet '47-'48, '48-'49; Triple Trio '46-'47; Publications '48-'49; Student Council '48-'49; Junior Play '47-'48; F. H. A. '47-'48; State Historian '48-'49; National Contest '46-'47; Y-Teens '46-'47, '47-'48, '48-'49; Mixed Chorus '46-'47.

VINCIL KESSLER—Basketball '45-'46, '46-'47; Football '45-'46, '46-'47, '47-'48, '48-'49; Track '45-'46, '46-'47, '47-'48; Cheer Leader '47-'48.

LEMUEL LAMKINS—F. F. A. '45-'46, '46-'47, '47-'48, '48-'49; Football '45-'46, '46-'47, '47-'48; Track '45-'46, '46-'47; Publication '48-'49.



BUDDY LANE Football '45-'46, '46-'47; Track '45-'46, '46-'47; Publication '48-'49.

IVA RUTH LEWIS F. H. A. '45-'46.

MARJORIE LEWIS—Freshman Sec. Sophomore Pres. Girls Glee Club '46-'47; A Cappella Choir '48-'49; Triple Trio '47-'48, Quartet '47-'48, '48-'49; Dragonettes '45-'46, '46-'47, '47-'48, Vice Pres. '46-'49; Publication '48-'49; Editor of Mystic '48-'49; Student Council '47-'48; Drum and Bugle Corps '46-'47, '47-'48; Junior Play '47-'48; Legion Poppy Contest '47-'48; Y-Teens '47-'48, '48-'49; Tank '47-'48.

REGINA MALLEN—Entered from St. Rita's '47-'48; Publication '48-'49; Drum and Bugle Corps '47-'48; Y-Teens '47-'48, '48-'49.

DELORES MATTSON—Dragonettes '46-'47, Vice Pres. '47-'48, '48-'49; Student Council '48-'49; Drum and Bugle Corps '45-'46, '46-'47, '47-'48; F. H. A. Vice Pres. '46-'47, '47-'48; Y-Teens '46-'47, '47-'48, '48-'49; Volley Ball '46-'47.

BOB MCKEE—F. F. A. '45-'46, '46-'47, '47-'48, '48-'49; Sophomore Sec. "C" Club '46-'47, '47-'48, '48-'49; Band '45-'46, '46-'47, '47-'48, '48-'49; A Cappella Choir '46-'47, '47-'48, '48-'49; Male Quartet '47-'48, '48-'49; Pep Band '45-'46, '46-'47, '47-'48, '48-'49; Basketball '45-'46, '46-'47, '47-'48, '48-'49; Football '45-'46, '46-'47, '47-'48, '48-'49; Boy's State '48; Scouts '45-'46, '46-'47; Student Council '48-'49.

LESLIE V. McWILLIAMS—F. F. A. '45-'46, '46-'47, '47-'48, Treas. '48-'49; "C" Club '45-'46, '46-'47, '47-'48, '48-'49; Football '45-'46, '46-'47, '47-'48; Publication '48-'49.

HILDA MENGEL—Entered from Kidder '48-'49; A Cappella Choir '48-'49; Dragonettes '48-'49; Cheer Leader '48-'49; F. H. A. '48-'49; Y-Teens '46-'49; Homecoming Queen.

MONICA A. MURPHY—Entered from St. Rita's '46-'47; Senior Sec.; A Cappella Choir '48-'49.

DOLORES PACKHAM—Junior Attendant; A Cappella Choir '46-'47, '47-'48, '48-'49; Girls Glee Club '48-'49; Trio, Sextet, Triple Trio '46-'47, Sextet '47-'48; Junior Play '47-'48; Dragonettes '45-'46, '46-'47, '47-'48, '48-'49; Drum and Bugle Corps '45-'46, '46-'47, '47-'48; Publication '48-'49; Y-Teens '46-'47, '47-'48, '48-'49; Volley Ball '46-'47.

LILLIAN A. PETERSEN—Entered from Mirabile '47-'48; F. H. A. '47-'48, '48-'49.

ROBERT S. POLLETT—F. F. A. '45-'46, '46-'47, '47-'48, '48-'49; A Cappella Choir '48-'49.

DOROTHY POTTS—Entered from St. Rita's '47-'48; Junior Sec.; A Cappella Choir '48-'49; Triple Trio '47-'48; Y-Teens '47-'48, '48-'49.

MARY ANN PUTERBAUGH—Girls Glee Club '48-'49; A Cappella Choir '47-'48, '48-'49; F. H. A. '46-'47, '47-'48.

LOLA SEARS—Girls Glee Club '45-'46, '48-'49; A Cappella Choir '47-'48, '48-'49; Drum and Bugle Corps '46-'47; F. H. A. '46-'47, '47-'48; Y-Teens '46-'47, '47-'48, '48-'49.

INA BELLE SLOAN—Girls Glee Club '47-'48, '48-'49; Publication '48-'49; Drum and Bugle Corps '45-'46, '46-'47; F. H. A. '46-'47; Y-Teens '47-'48, '48-'49.

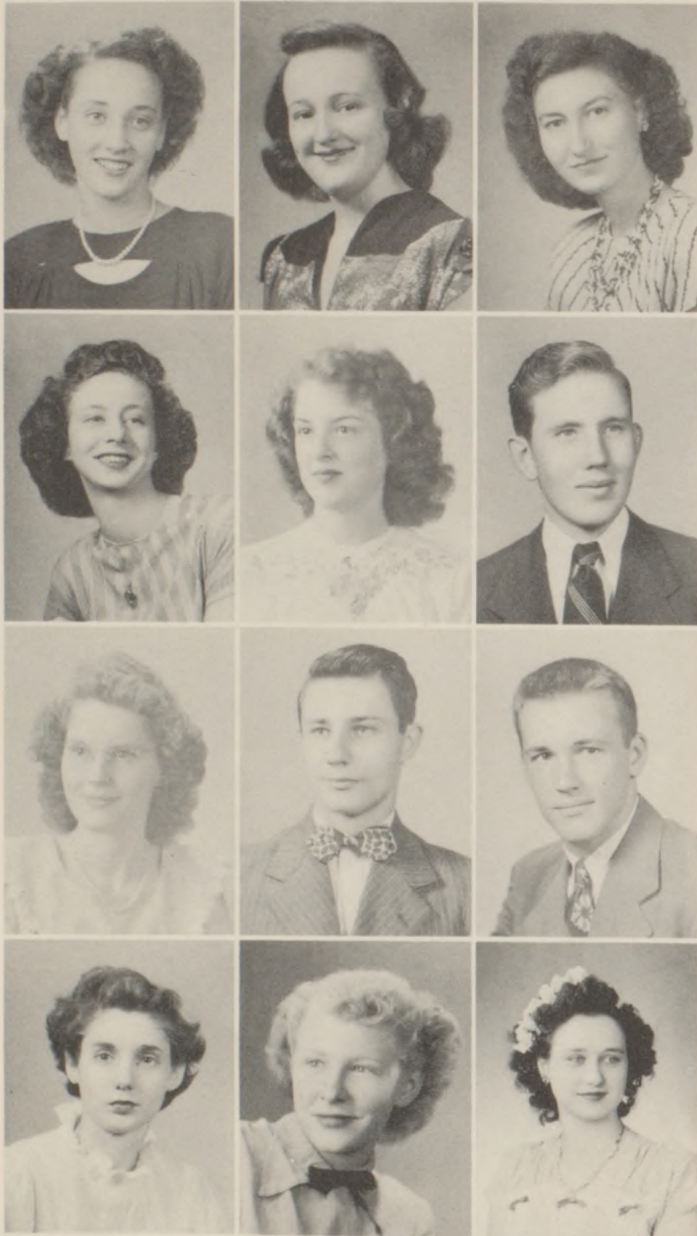
JACK SMART—"C" Club '47-'48, '48-'49; Basketball '45-'46, '46-'47, '47-'48, '48-'49; Football '45-'46, '46-'47; Track '45-'46, '46-'47; Publication '48-'49; Scouts '45-'46, '46-'47, '47-'48, '48-'49; Junior Play '47-'48.

JAMES STEELE—Football '46-'47; Track '45-'46, '46-'47.

# SENIORS



# SENIORS



DORIS JEAN STEWARD—Drum and Bugle Corps '46-'47, '47-'48; F. H. A. '46-'47.

WILMA STINSON—Publication '48-'49; F. H. A. '47-'48, '48-'49.

MARJORIE SWINDLER—Girls Glee Club '48-'49; F. H. A. '46-'47, '47-'48; Publication '48-'49

GLADYS TAYLOR—Girls Glee Club '46-'47, '48-'49; Publication '48-'49; F. H. A. '46-'47; Y-Teens '46-'47.

RUTH TERRY—Entered from Los Angeles, '48-'49; Girls Glee Club '48-'49; A Cappella Choir '48-'49; Dragonettes '48-'49.

JERRY THOMPSON—F. F. A. '45-'46; "C" Club '46-'47, '47-'48, '48-'49; Football '45-'46, '46-'47, '47-'48, '48-'49.

LILA TRIPP—Band '45-'46, '46-'47, '47-'48, '48-'49; Publication '48-'49.

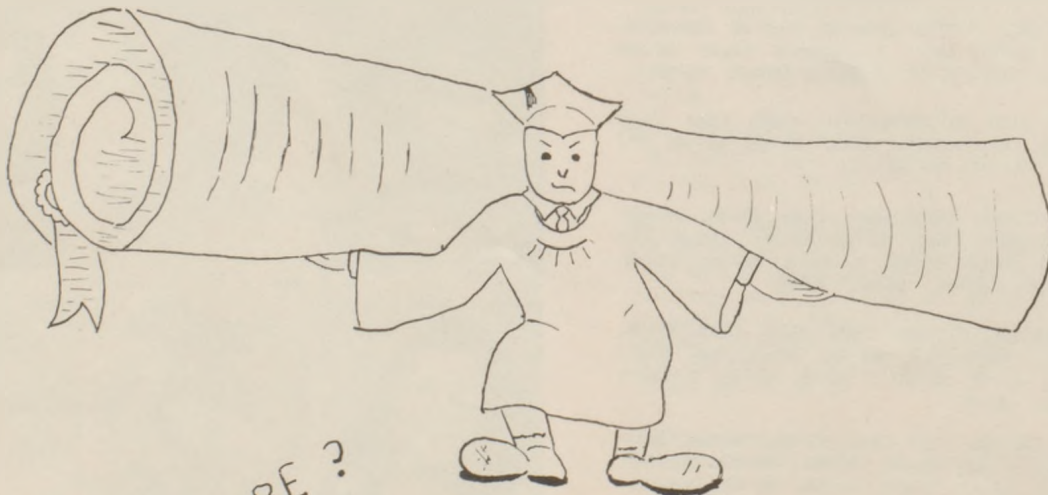
ROGER EUGENE TUNKS—Football '46-'47; Track '45-'46, '46-'47; Publication '48-'49.

DON WELCH—F. F. A. '45-'46, '46-'47; Freshman Pres.; A Cappella Choir '45-'46, '46-'47, '47-'48, '48-'49; Male Quartet '46-'47, '47-'48; Basketball '45-'46, '46-'47, '47-'48, '48-'49; Football '45-'46, '46-'47, '47-'48, '48-'49; Track '45-'46, '46-'47, '47-'48, '48-'49; Student Council, Sergeant-at-Arms '46-'47, '47-'48; Junior Play '47-'48.

LU ETTA WILFORD—Dragonettes '45-'46, '46-'47, '47-'48; Publication '48-'49; Assistant Editor of Mystic; Drum and Bugle Corps '45-'46, '46-'47; Junior Play '47-'48; Cheer Leader '45-'46, '46-'47, '47-'48; F. H. A. '46-'47, Treas. '47-'48; Y-Teens '46-'47, '47-'48, '48-'49; Senior Attendant.

JOYCE WHITEAKER—Publication '48-'49.

CHARLINE TOFFLEMIRE  
Post Graduate



MAYBE ?



# JUNIORS



## JUNIOR CLASS OFFICERS

First Row—President, Larry Estep; Treasurer, Bob Bruch.  
Second Row—Reporter, Jody O'Day; Vice-President, Joan Byrd;  
Secretary, Violet Wilford.



# JUNIORS



ALLEN AKEY

PEGGY ANDERSON

LYNN BARRY

MARTHA BEATTY

RENIE BLANKENSHIP

GLENN BOWMAN

WAYNE BRADFORD

ROBERT BRADY

BILL BRUCH

BOB BRUCH

HELEN BURNETT

MARILYN JOAN BYRD

COY CARTER

MARY FAITH CHASTAIN

LAWRENCE D. CLARK

BEVERLY ANN COLLINS

RAYMOND S. DIVACKY

CLINTON ELLIS

LARRY ESTEF

LLOYD FILLEY

ELLIENE FLEMING

JAMES FROST

MARY GRUVER

JERRY HAMPTON

# JUNIORS

DELORES HARTER

JACQUELYN HEINZ

PAUL MARVIN HUNT

RICHARD JENKINS



JOE JONES

NANCY JUKES

ARTHUR KENNEDY

MILDRED KING

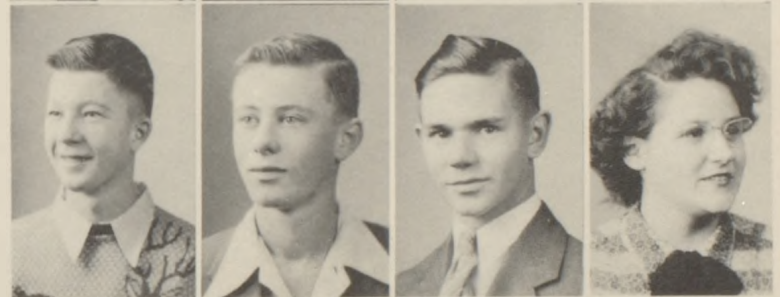


RICHARD KIRKENDOLL

KARLE KRESSE

RICHARD LEUTZINGER

JEAN LEUTZINGER



MYRON LYON

MARY MALLEN

JUANITA McWILLIAMS

LYDIA MILLIGAN

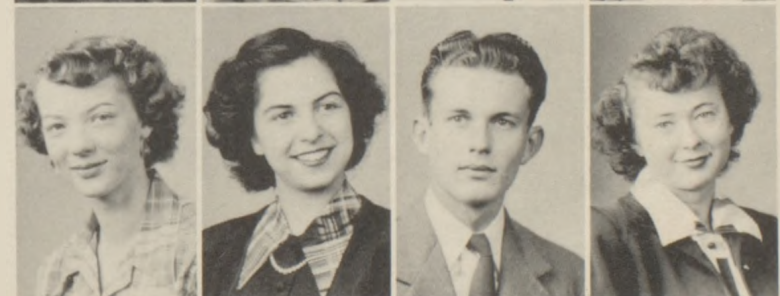


DOLLIE MORGAN

BETTY ELLEN NELSON

CHARLES R. OCKER

JODY O'DAY



HELEN OSWALD

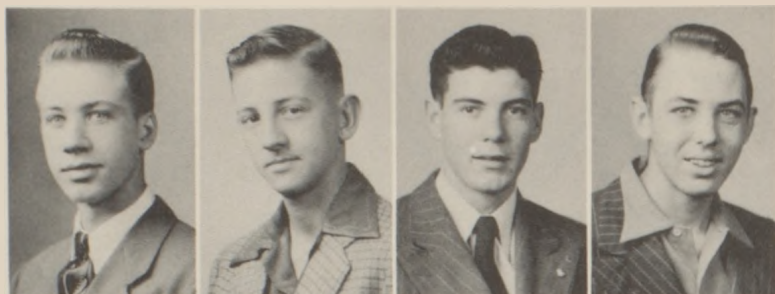
BETTY PARRACK

EILEEN PEARL

DELORES MAE PEARSON



# JUNIORS



BYRON PENDLETON

ELMER PETERS

JOE POTTS

RANDALL REED, JR.



BETTY L. ROBINSON

NORMAN SHELMAN

RITA SMALLWOOD

CHARLEY STADE

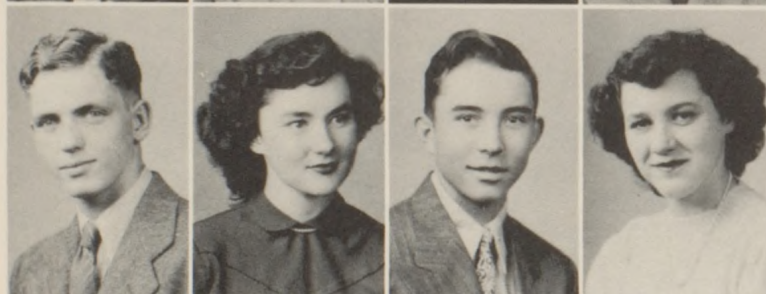


GAYLE STINSON

BETTY JUNE STREETER

GOLDIE TAYLOR

HENRY TOTZKE



WAYNE TROXELL

DOROTHY VAN HORN

BOB WALKER

WANDA WHITE



BETTY WHITEAKER

VIOLET WILFORD

DORIS NADINE WILSON



DORIS ANN WOOD

LILA JEAN WOODERSON



AS DAYS GO BY

# SOPHOMORE CLASS



First Row: Sec., M. Jackson; Treas., M. Bowman; Pres., B. Hatcher;  
Vice-Pres., M. Sigrist; Reporter, C. Laughlin.

Second Row: J. Zeidler, P. Lampton, D. Moore, B. Beckett, G.  
Houghton.

Third Row: Mr. Hill, sponsor; H. Stark, C. McColloch, T. Rooney,  
D. King.

Fourth Row: D. Carlile, E. Schoettlin, E. Scott, P. Stevenson.



First Row: H. Hubbard, A. Groebe, C. Duce, E. Miller, W. Howard.

Second Row: D. Thomas, P. Shaddock, S. Heinz, B. Hutton, B. Woods

Third Row: B. Rice, R. Broderick, C. Campbell, H. Marshall, T.  
Cline, R. Brown.

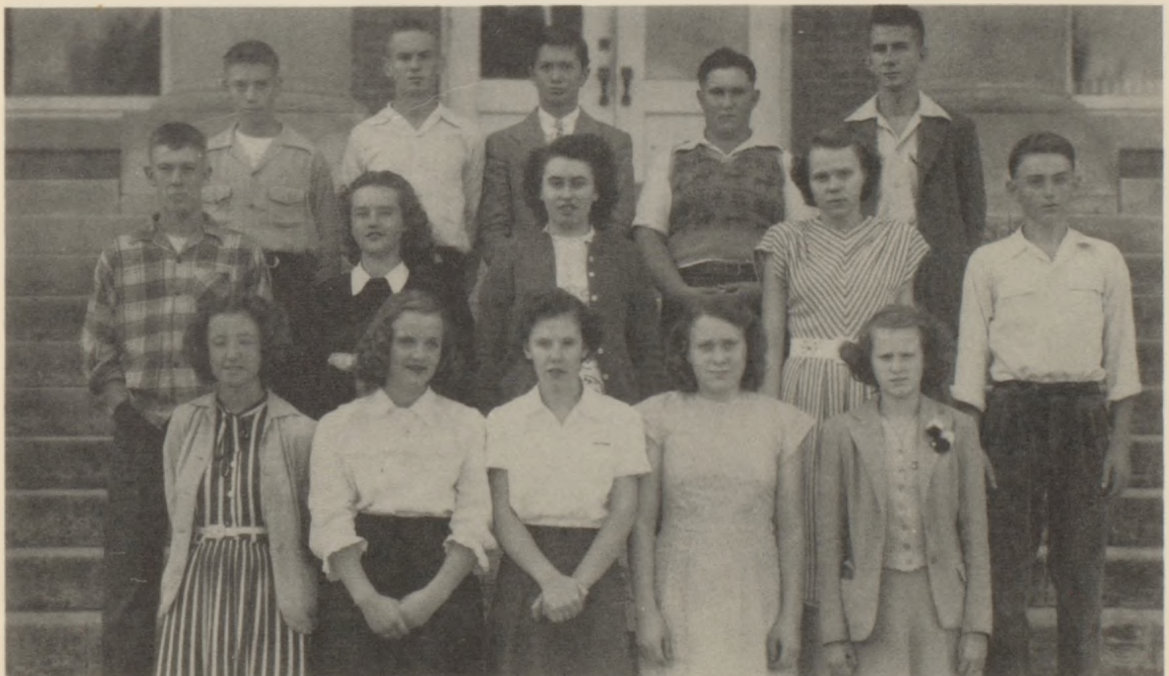
# SOPHOMORE CLASS



First Row: B. Stewart, R. Kordes, M. Livingston, R. Dice, J. Combs,  
M. Berryman, M. Goodman.

Second Row: Mrs. Deem, sponsor; C. Griffen, N. Silvius, V. Thompson,  
B. Logue, P. Murphy.

Third Row: R. Colby, N. Newby, M. Elston, W. Morland, M. Moody.

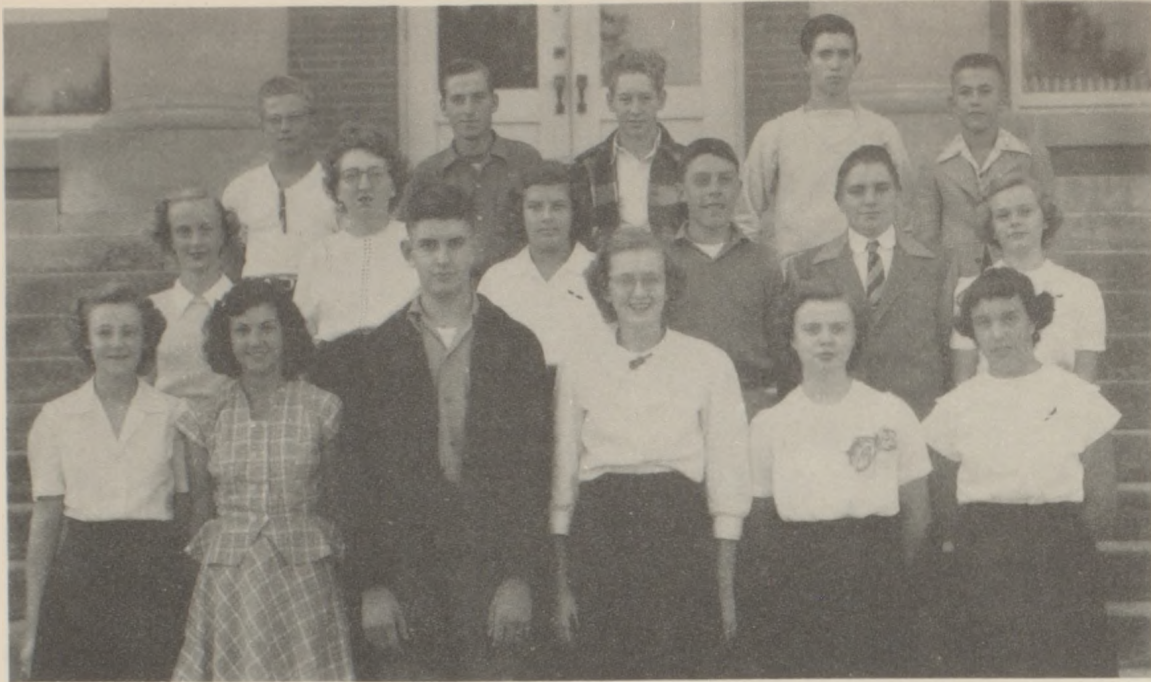


First Row: Y. Wickizer, J. McWilliams, N. Williams, A. Burnett, B.  
King.

Second Row: J. Kirkendoll, J. Pollett, D. Hanks, N. McKee, R.  
Simpson.

Third Row: N. Hawkins, J. McCombs, L. Curtis, D. Akey, L. Hang-  
ley.

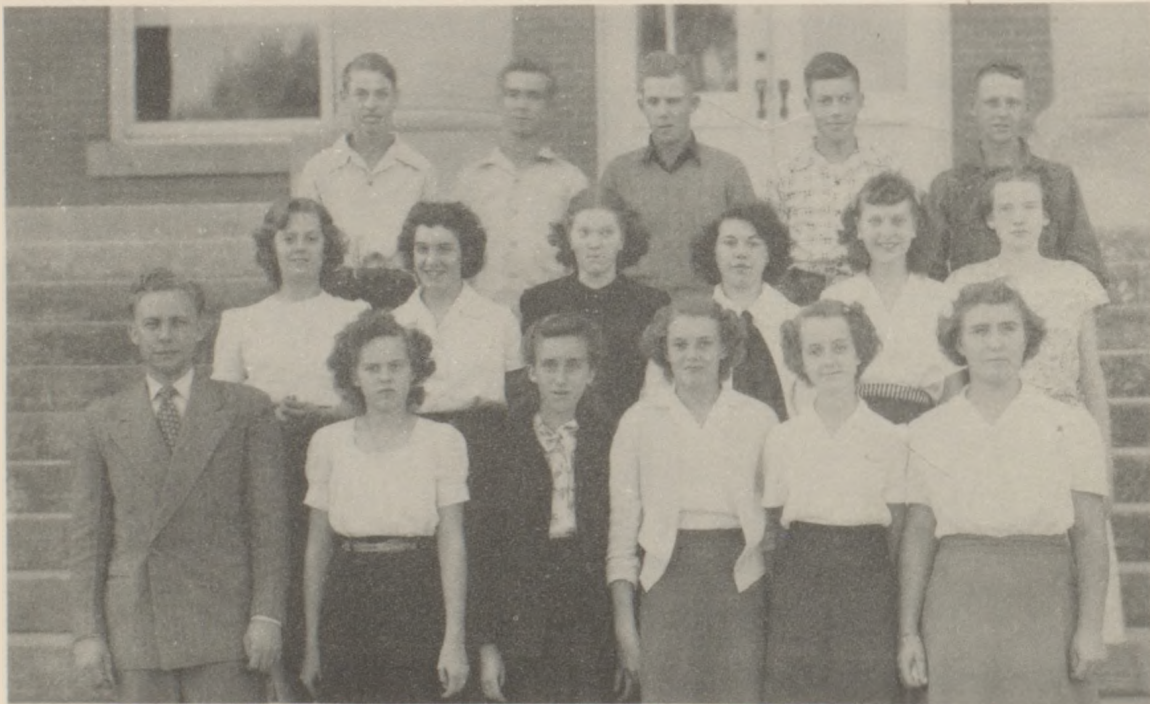
# FRESHMAN CLASS



First Row: Treas., B. Beckwith; Sec., P. Goad; Pres., J. Hangley,  
Vice-Pres., M. Hampton; Reporter, E. Hughes; M. Bowman.

Second Row: J. Edwards, M. Oswald, A. Robinson, B. Johnson, D.  
Smith, V. Demarest.

Third Row: J. Grace, B. DeFreece J. Vassmer, B. Middaugh, E.  
Grimes.



First Row: Mr. Weichinger, sponsor; M. Bayer, B. Parrack, D. Pack-  
ham, L. Johnston, C. Akey.

Second Row: B. Arnold, J. Stevens, N. Whited, R. Frost, O. Dieter,  
C. Dunn.

Third Row: D. Reed, W. Filley, E. Rogers, C. Scott, V. Stinson.



# FRESHMAN CLASS



First Row: J. King, G. Jones, J. Stade, M. Campbell.

Second Row: D. King, E. Richardson, P. Hughes.

Third Row: J. McVicker, C. Scott, V. McMullen, H. Eads J. Fleming.

Fourth Row: W. Dice, B. King.



First Row: L. Edwards, H. Eaton, J. Sprouse, B. Heldenbrand, G. Peters, D. Sanders, G. Runge, B. Turner.

Second Row: Mrs. Overlay, sponsor; R. Utt, P. Bruch, S. Bradford, M. Goldrick, D. O'Connor, B. Metz.

Third Row: F. Carson, R. Leimbach, H. Riley, B. Wiss, R. Bruch, D. Corn, L. Milligan, J. Slates.

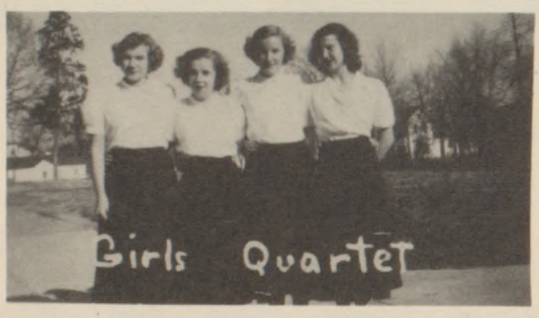


Trio



Trumpet Trio

# ORGANIZATION



Girls Quartet



Clarinet Quartet



Boy Quartet



Triple Trio



Band



Sextet

**F. H. A. CLUB**

First Row: M. Campbell, D. Sanders, E. Hughes, B. Stewart, Miss Pollard, Miss Ordnung, R. Kordes, M. Sigrist, R. Dice.

Second Row: P. Murphy, M. Mallen, M. Hampton, J. Grace, D. Packham, J. Stade, N. McKee, G. Jones, J. Slates, M. Livingston.

Third Row: C. Akey, B. Browers, H. Mengel, M. Bayer, P. Bruch, G. Peters, L. Hutton, B. Metz, C. Dunn, O. Dieter.



First Row: B. Groves, B. Bruch, A. Gross, N. Blacketer, A. Deem, S. Grace, M. Kenney, D. Wood.

Second Row: Miss Pollard, B. Hutton, L. Peterson, M. Bowman, D. Asher, B. Arnold, W. Stinson, D. Packham, and Miss Ordnung.

Third Row: P. Lampton, L. Boyles, H. Hubbard, M. Berryman, A. Groebe, N. Williams, M. Goldrick, B. Beckett.

**F F A**

First Row: M. Moody, G. Stinson, R. Bruch, B. Taylor, L. Lamkins, R. Pollett, B. Bruch, D. Akey, Sponsor, Mr. Hill.

Second Row: R. Broderick, N. Sherman, R. Reed, L. Curtis, H. Marshall, C. Ocker, B. Bruch, R. Colby.

Third Row: L. Barry, T. Rooney, L. Roberts, A. Kennedy, C. McColloch, B. Walker, L. Estep, J. Jones.

Fourth Row: W. Bradford, K. Kresse, E. Rogers, F. Wickizer, A. Akey, L. Hangley.

Fifth Row: C. Stade, L. Austin, B. McKee, B. Bennett, D. Heldenbrand, J. Hill.





- First Row: J. Zeldler, P. Diven, N. Blacketer, R. Kordes, D. Wood, P. Bruch, M. Bowman, G. Runge
- Second Row: D. O'Connor, L. Wooderson, W. White, M. Chastain, J. Hubbard, B. Bruch, B. Colby, H. Totzke, J. Hill, D. Thomas, F. Carson, P. Goad, R. Leinbach, M. Bowman, J. Heinz, M. Beatty
- Third Row: E. Nelson, E. Hughes, L. Tripp, B. Collins, D. Sanders, B. Stewart, B. Beckett, J. Hampton, P. Hunt, R. Bruch, J. McCombs, D. Carlile, D. Smith, J. Pollett, C. Ocker, B. Bruch, B. Bruch, B. McKee, D. King, R. Jenkins
- Fourth Row: J. Hangley, J. Combs, M. Livingston, R. Dice, M. Campbell, M. Hampton, N. Newby, A. Bennett



First Row: B. Collins, B. Nelson, D. Sanders, S. Heinz, D. Van Horn, M. Bowman, M. Collier, E. Hughes, M. Livingston, J. Combs, J. Blacketer, J. Byrd, L. Sears, J. Zeldler, Mr. Riffie, Sponsor.

Second Row: R. Dice, M. Murphy, M. Puterbaugh, C. Akey, R. Kordes, M. Bayer, L. Hutton, M. Oswald, A. Groebe, V. Wilford, J. Heinz, D. O'Conner, M. Kenney, D. Wood, C. Carter.

Third Row: J. McWilliams, O. Curtis, C. Duce, M. Bowman, P. Diven, M. Lewis, B. Hutton, B. Beckwith, P. Lampton, J. Stevens, M. Goldrick, B. Arnold, D. Pearson, M. Chastain, B. Groves, M. Sigrist.

Fourth Row: B. Stewart, J. Hubbard, M. Hampton, V. Bratcher, M. Beatty, H. Mengel, W. Howard, B. Bruch, D. Packham, E. Fleming, R. Terry, W. White, D. Potts, J. Leutzinger.

Fifth Row: R. Leimback, W. Dice, E. Grimes, D. Smith, R. Bruch, L. Clark, R. Pollett, L. Curtis, J. Stark, C. Campbell, M. Jackson, P. Shaddock, C. Griffen, R. Colby.

Sixth Row: J. Hampton, B. Bruch, D. Welch, L. Austen, F. Grimes, J. Potts, C. Ocker, P. Hunt, R. Jenkins, R. DeFreece, M. Lyons, L. Barry, W. Troxell, B. McKee, H. Totzke.

**GIRLS GLEE CLUB**

First Row: M. King, G. Taylor, M. Swindler, D. Harter, D. Asher, B. Parrick, L. Hutton, M. Kenney, D. Wood, L. Sears.

Second Row: R. Kennedy, G. Houghton, D. Morgan, D. Packham, L. Johnston, B. Streeter, N. Williams, D. O'Conner, L. Boyles, V. Demarest.

Third Row: S. Heinz, J. Hubbard, R. Utt, A. Deem, B. Groves, I. Fleming, D. Packham, M. Chastain, R. Terry, E. Pearl.

Fourth Row: M. Puterbaugh, A. Gross, I. Sloan, P. Hughes, B. Bruch, A. Robinson, V. Thompson, O. Dieter, P. Anderson, J. Slates.



**PEP BAND**

First Row: J. Zeidler, P. Diven, J. Blacketer, R. Bruch, P. Hunt, J. Hampton, J. Hill, H. Totzke.

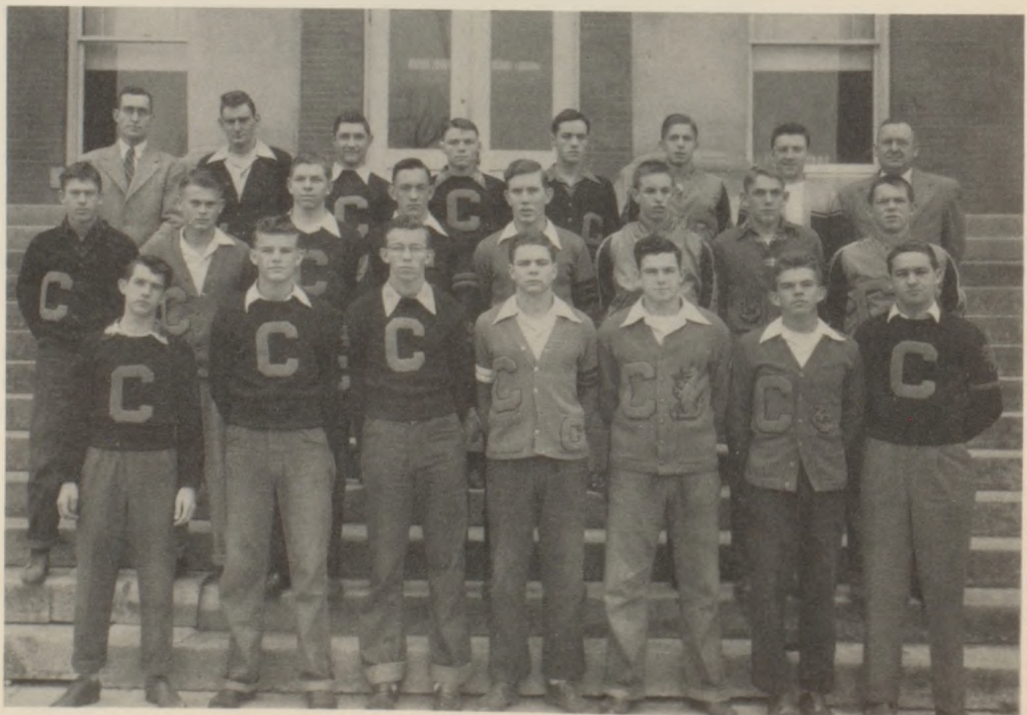
Second Row: M. Beatty, J. Heinz, J. Combs, R. Dice, M. Livingston, B. Bennett, Director Mr. Riffie; B. Bruch, B. Bruch, B. McKee, R. Jenkins.

**"C" CLUB**

First Row: V. Kessler, C. Stade, B. Brady, L. Austin, J. Frost, J. Hill, R. DeFreece.

Second Row: J. Kirkendoll, W. Bradford, M. Lyons, G. Bowman, J. Thompson, J. Smart, B. Bruch, R. Brown.

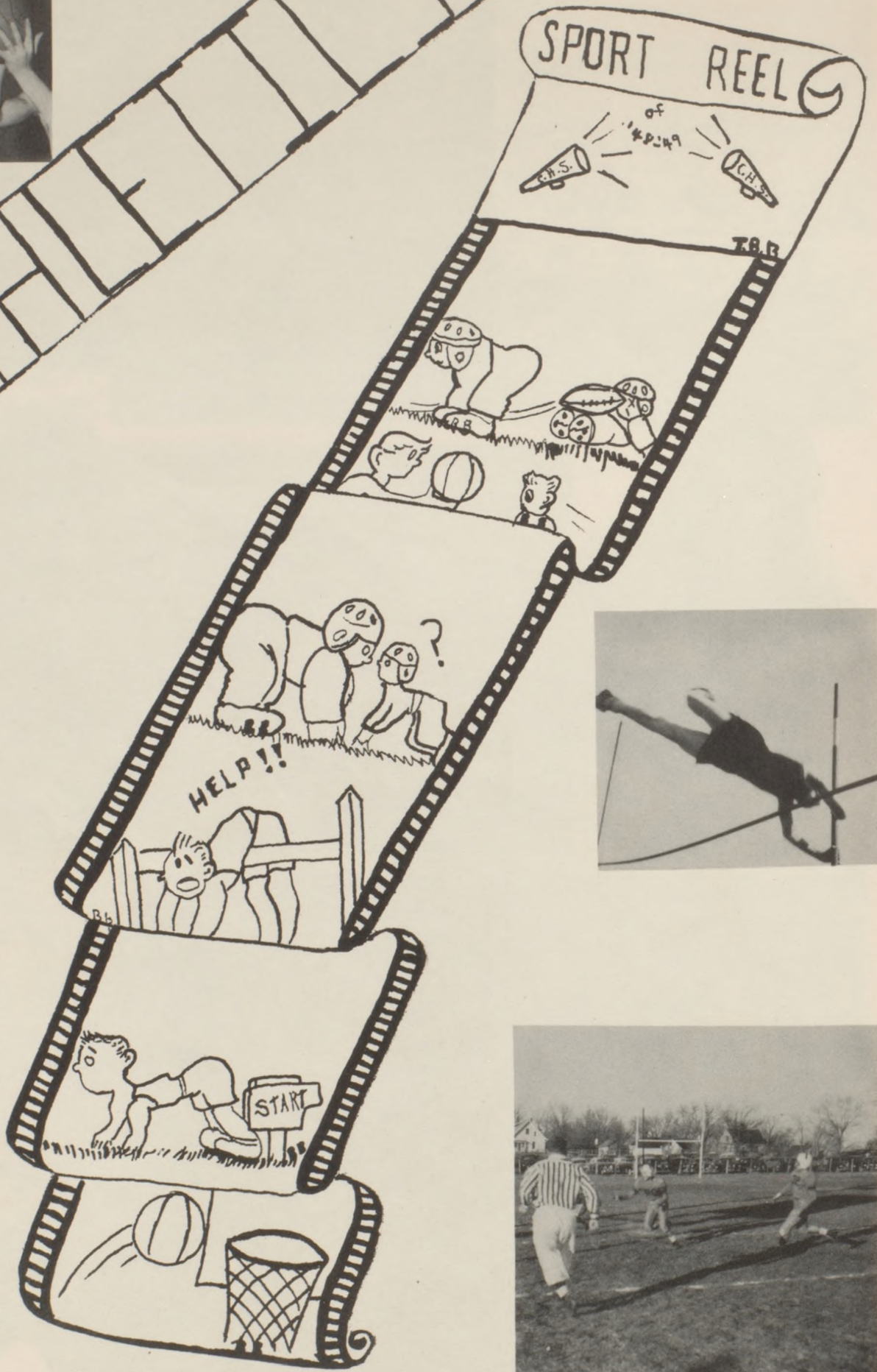
Third Row: Sponsor Mr. Dowell; B. McKee, A. Akey, J. Hampton, B. Bell, H. Totzke, B. Hatcher, Sponsor, Mr. Cox.



## DRAGONETTES

Right to Left: M. Bowman, D. Sanders, H. Mengel, W. White, D. Wood, M. Collier, E. Nelson, M. Campbell, B. Collins, J. Combs, R. Dice, B. Stewart, V. Demarest, D. Packham, M. Hampton, D. Mattson, M. Beatty, A. Gross, B. Bowers, P. Fleming, J. Heinz, R. Terry, M. Sigrist, R. Kordes, M. Lewis, M. Livingston, M. Bowman, G. Runge.  
Sponsor, Mr. Riffie, Sponsor Mrs. Overlay.









First Row: R. Brown, A. Graham, J. Hill, M. Lyon, W. Bradford, J. Frost, B. Brady, C. Stade, J. Thompson, L. Austin, V. Kessler

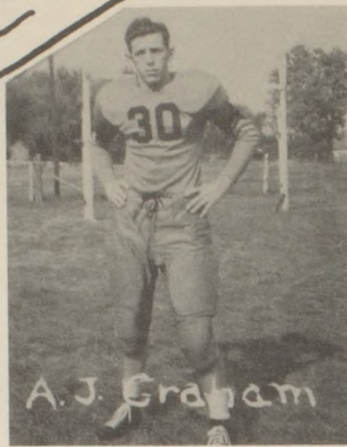
Second Row: N. Newby, B. Simpson, B. McKee, R. DeFreece, H. Totzke, J. Hampton, R. DiVacky, G. Bowman, B. Bell, J. Kirkendoll, N. Sheiman, F. Grimes, Coach Dowell

Third Row: T. Cline, B. Pollett, P. Shaddock, W. Troxell, A. Akey, B. Hatcher, B. Bruch, J. Potts, D. Welch, L. Hangley, A. Bennett, C. Campbell

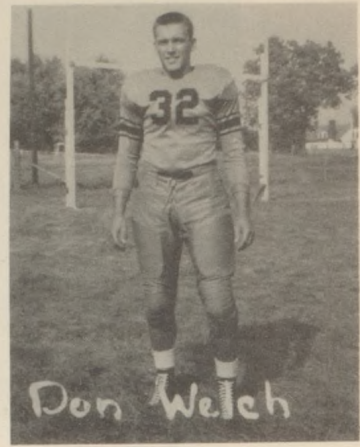
Fourth Row: B. Johnson, R. Bruch, B. DeFreece, R. Reed, D. Carlile, E. Grimes, R. Leimoach, L. Milligan, B. Broderick, L. Filley, F. Carson, M. Jackson, J. McCombs, J. Jones, J. McVicker



# FOOTBALL



A.J. Graham



Don Welch



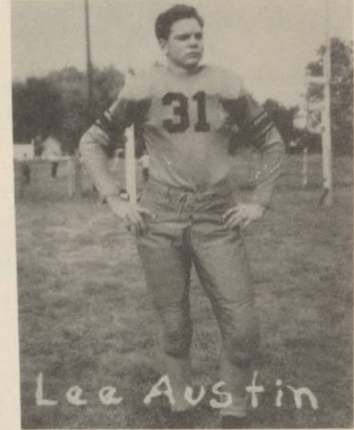
Bob Follett



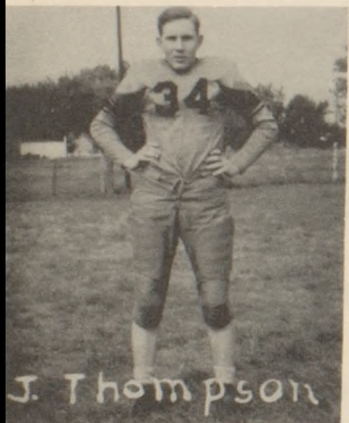
"B" Bennett



Vincil Kessler



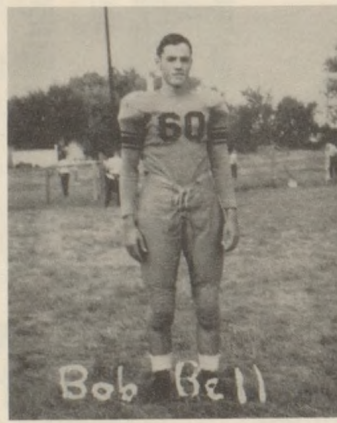
Lee Austin



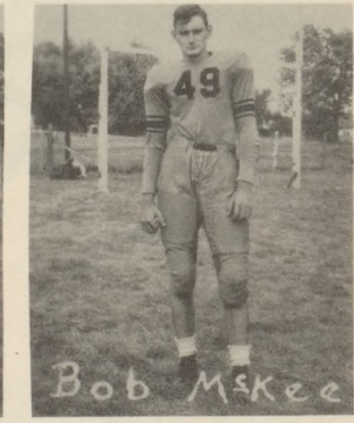
J. Thompson



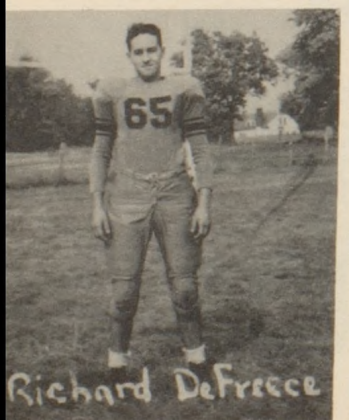
Jack Hill



Bob Bell



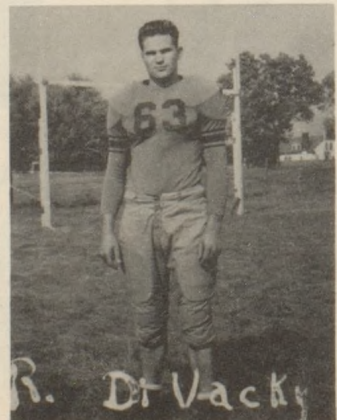
Bob McKee



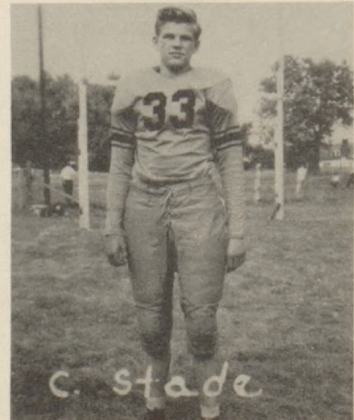
Richard DeFreese



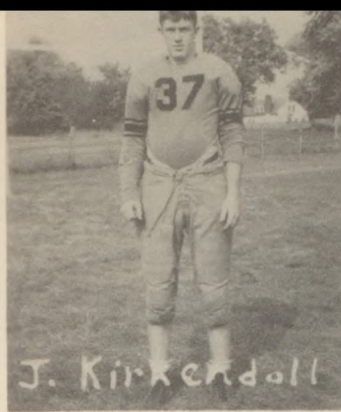
J. Frost



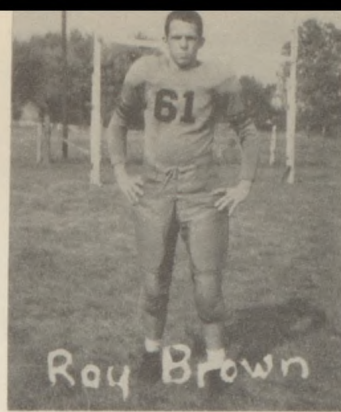
R. DeVacky



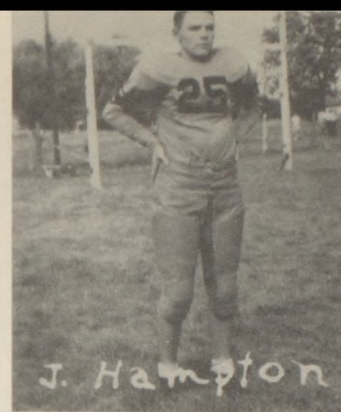
C. Stade



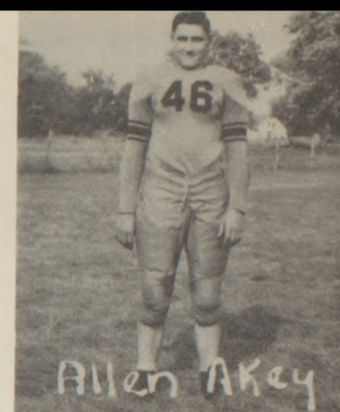
J. Kirkendall



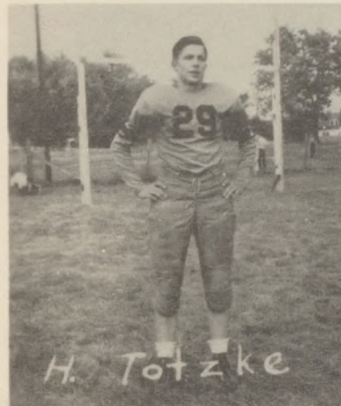
Roy Brown



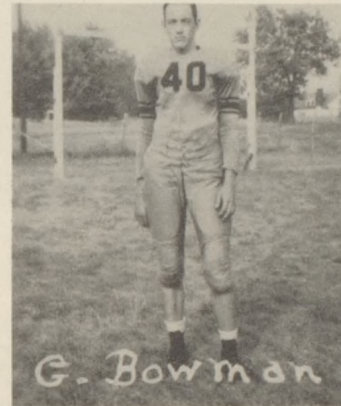
J. Hampton



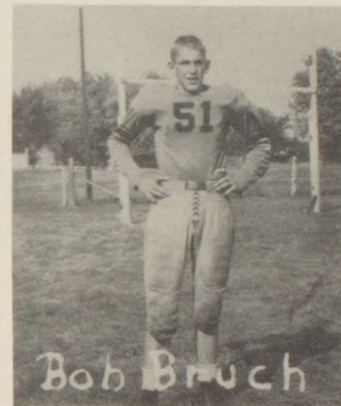
Allen Akey



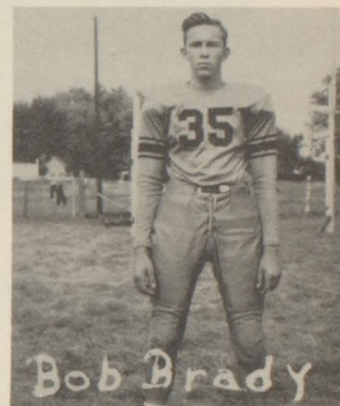
H. Totzke



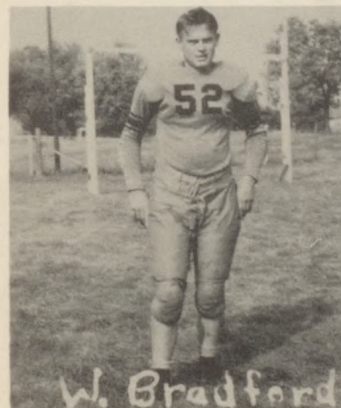
G. Bowman



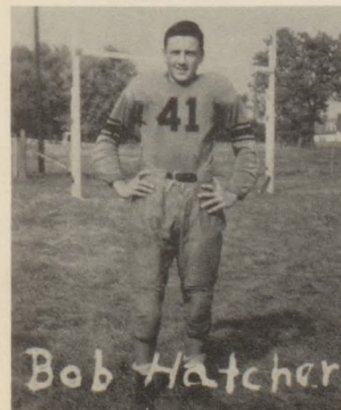
Bob Bruch



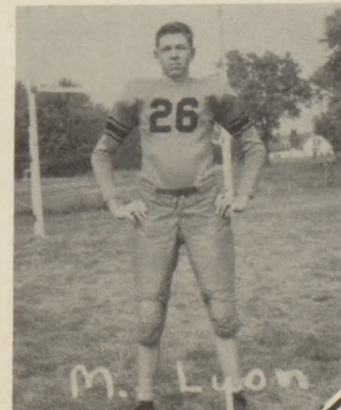
Bob Brady



W. Bradford



Bob Hatcher



M. Luon

### FOOTBALL SCORES

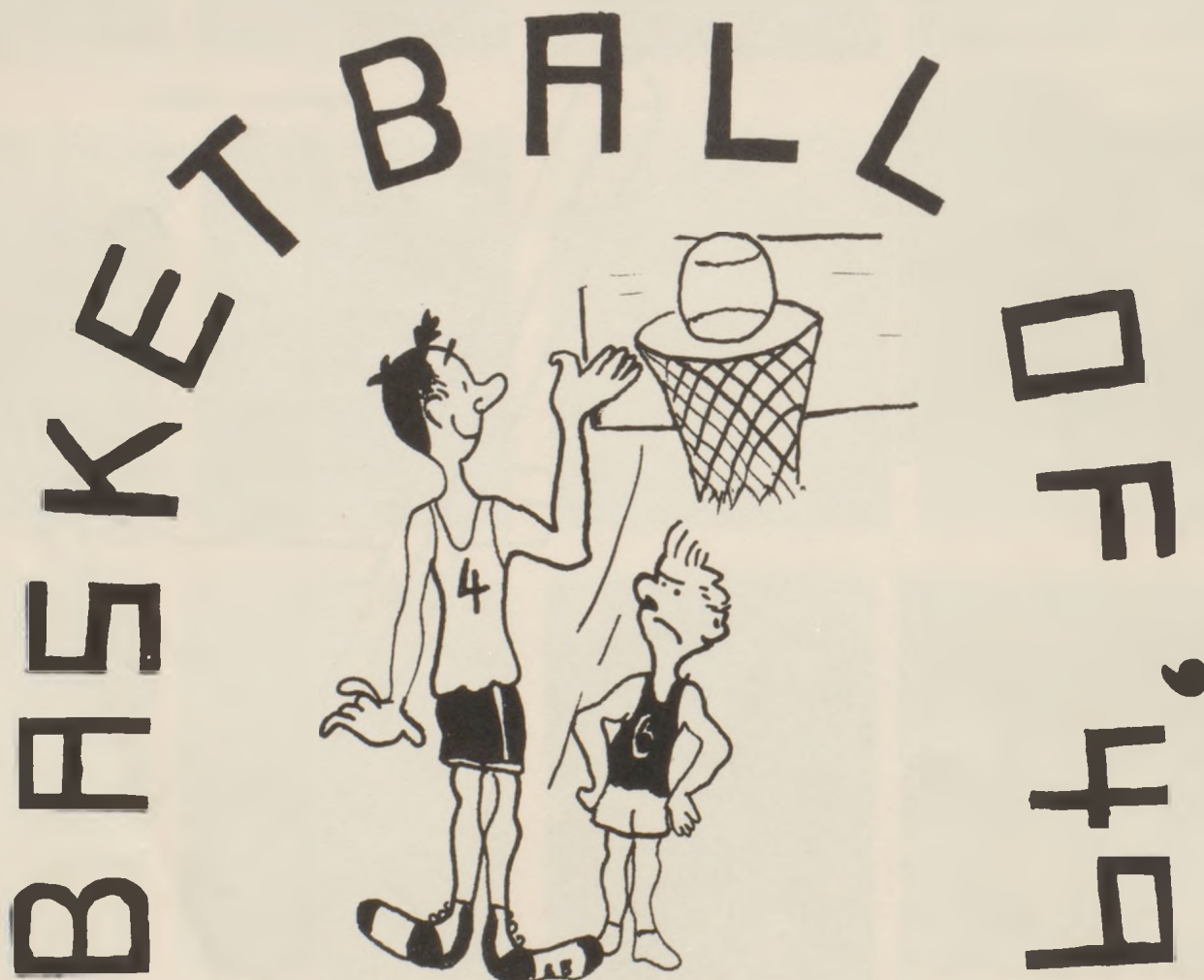
	CHS	OPP
Excelsior Springs	7	26
Plattsburg	21	0
Lathrop	13	6
Hamilton	7	19
Smithville	13	6
Maysville	41	6
Chillicothe	6	6
Maryville	14	13
Liberty	6	0

# FOOTBALL

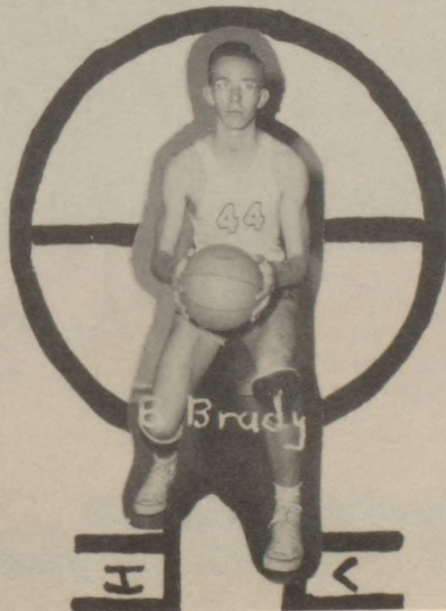
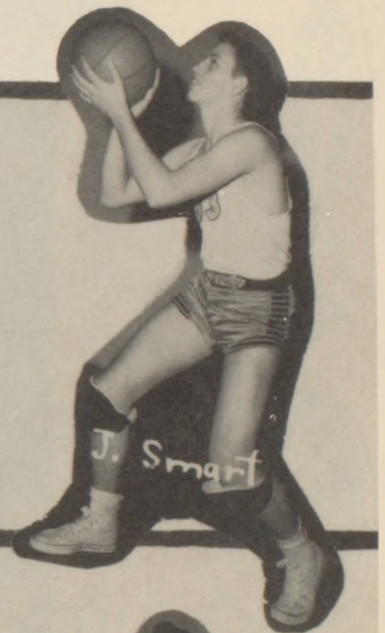
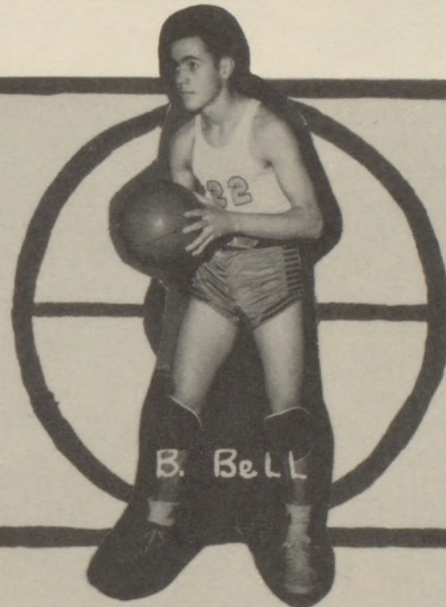


First Row: V. Kessler, B. Hatcher, J. Smart, B. Bell, J. Kirkendoll,  
D. Welch, H. Totzke, J. Hampton.

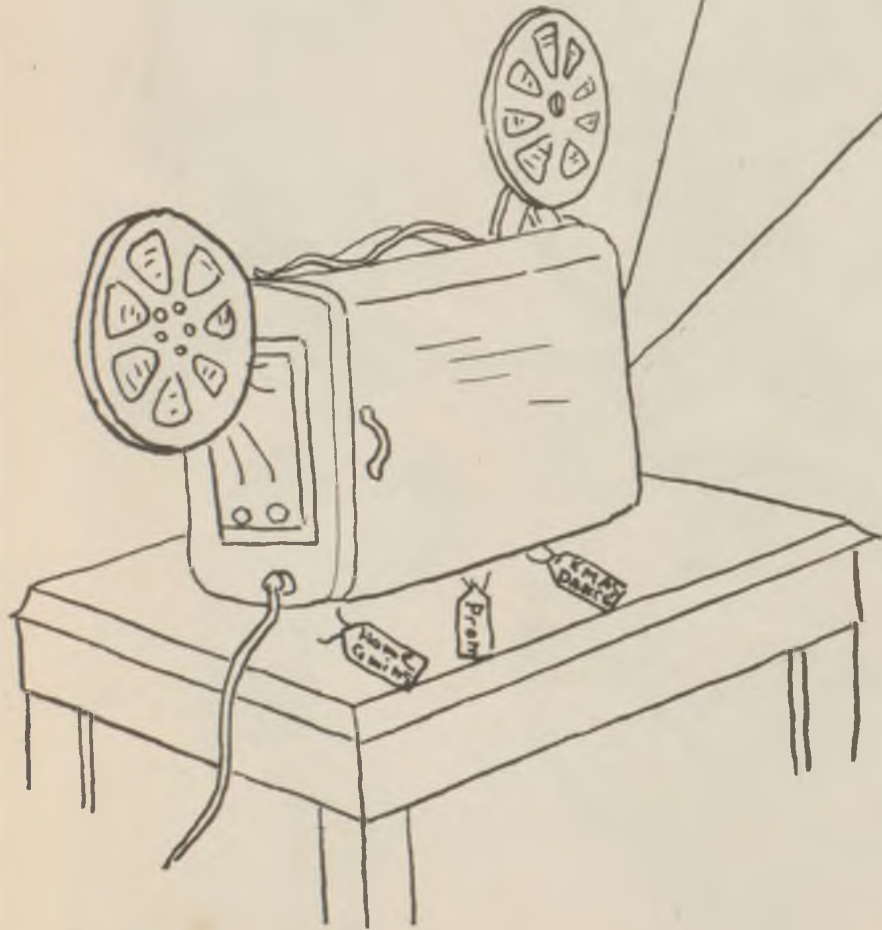
Second Row: N. Newby, R. Brown, T. Cline, B. Brady, F. Grimes,  
C. Campbell, J. McCombs, W. Troxell, G. Bowman, Coach  
Dowell.



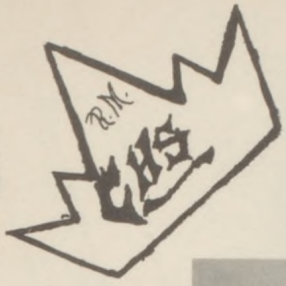
# ON THE COURT



# FEATURES



# MYSTIC ROYALTY



MYSTIC KING, BOB McKEE

MYSTIC QUEEN, LUETTA WILFORD



HILDA MENGEL



HOMECOMING QUEEN





Left to Right: Freshman Attendant Mariah Bowman, Sophomore Attendant Marguerite Sigrist, Co-Captain A. J. Graham, Queen Hilda Mengel, Co-Captain Don Welch, Senior Attendant Lu Etta Wilford, Junior Attendant Joan Byrd.

H  
O  
M  
E  
C  
O  
M  
I  
N  
G



R  
O  
Y  
A  
L  
T  
Y



## "We Shook the Family Tree"

Under the direction of Mrs. Madison H. Overlay  
 Class Sponsors: Miss Neola Pollard, Mrs. H. A. Totzke,  
 Mr. Vance Riffie

JUNIOR

PLAY

### CAST

(In order of their appearance)

HILDEGARDE DOLSON .....	Doris Ann Wood
SALLY DOLSON .....	Jody O'Day
BOB DOLSON .....	Jerry Hampton
MRS. DOLSON .....	Martha Beatty
JIMMY DOLSON .....	Bill Bruch
ELLIE MAY .....	Jacquelyn Heinz
JILL .....	Rena Lee Blankenship
PAIGE MASON .....	Beverly Collins
FREDDIE SHERMER .....	Henry Totzke, Jr.
MR. DOLSON .....	Bob Bruch
MR. SHERMER .....	Glenn Bowman
MRS. SHERMER .....	Nancy Jukes



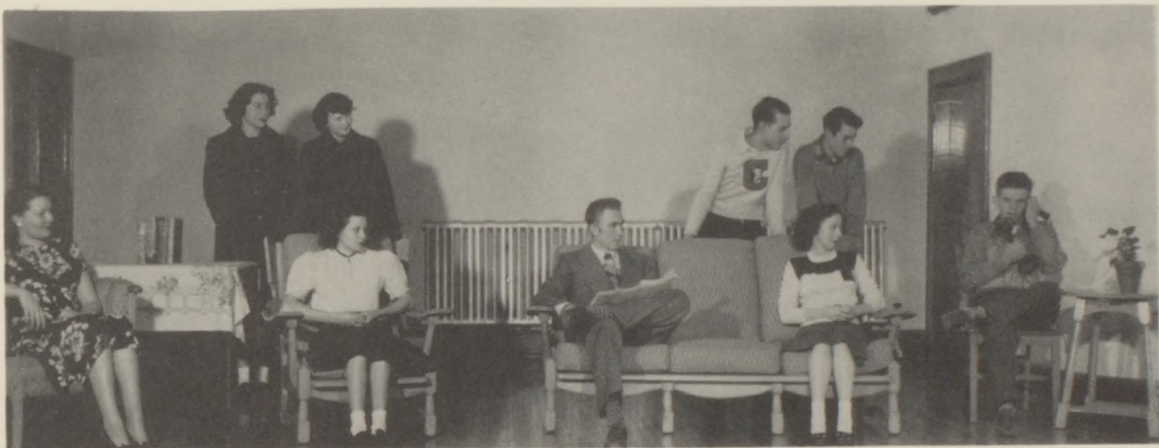
### MUSHROOMS COMING UP

P. Diven, M. Murphy, A. Deem, L. Wilford, B. Bowers



**GERALDINE AND THE WHITE ROBE**

L. Wilford, D. Welch, B. Bell, R. DeFreece, M. Lewis, M. Kenney, A. Deem, B. Pollett, M. Murphy, R. Jenkins, F. Grimes, F. Diven



**TOO MUCH MISLETOE**

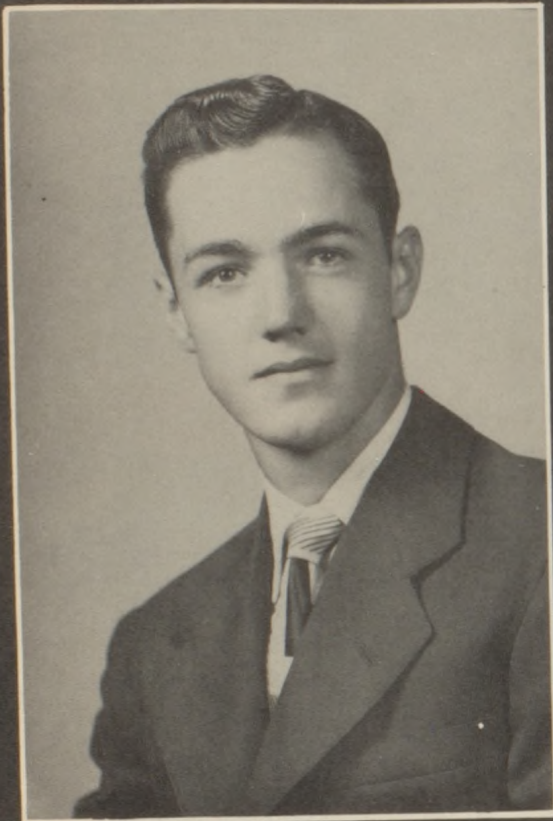
D. Packham, H. Mengel, J. Goodman, G. Taylor, D. Jones, L. Lap-  
king, G. Taylor, V. Kessler, J. Hill



**LESSON FROM LUKE**

R. Terry, B. McKee, J. Hubbard, E. Hawkins

# The Tank



TANK KING, BOB BELL



TANK QUEEN, MARILYN COLLIER



Junior Prince — Henry Totzke  
Junior Princess — Doris Ann Wood.



Sophomore Count — Bob Hatcher  
Sophomore Countess — Marguerite Sigrist



Freshman Viscount — Earl Grimes  
Freshman Viscountess — Gloria Runge



**TANK ELECTION**



**Friendliest Boy** — Richard DeFreece  
**Friendliest Girl** — Marjorie Lewis  
**Senior Most Likely to Succeed**— Ailie Deem  
**Couple Most Desperately in Love**  
 A. J. Graham and Regina Mallen  
**Most Courteous Girl** — Marjorie Lewis  
**Most Courteous Boy** — Bob Bell  
**Best Girl Pals** — Martha Beatty  
 Beverly Collins, Betty Nelson  
**Best Boy Pals** — Lee Austin  
 Bob Brady  
**Giggliest Giggler** — Dorothy Potts  
**Biggest Flirt** — Rena Blankenship  
**Best Dressed Boy** — Bob Bell  
**Best Dressed Girl** — Doris Ann Wood





