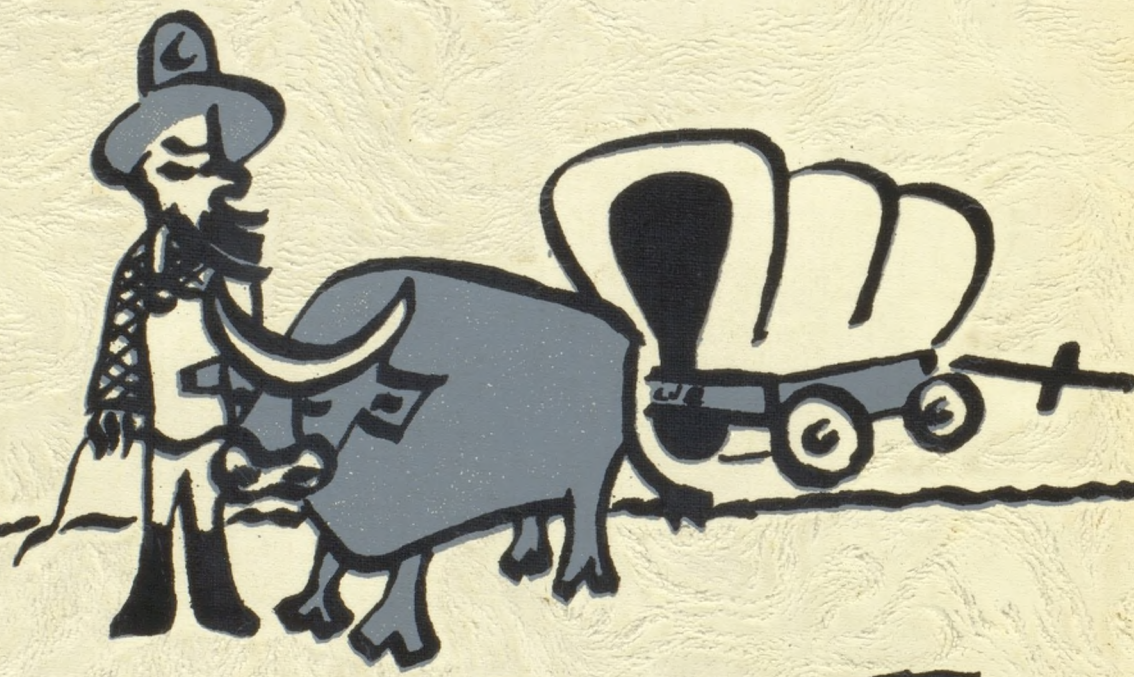
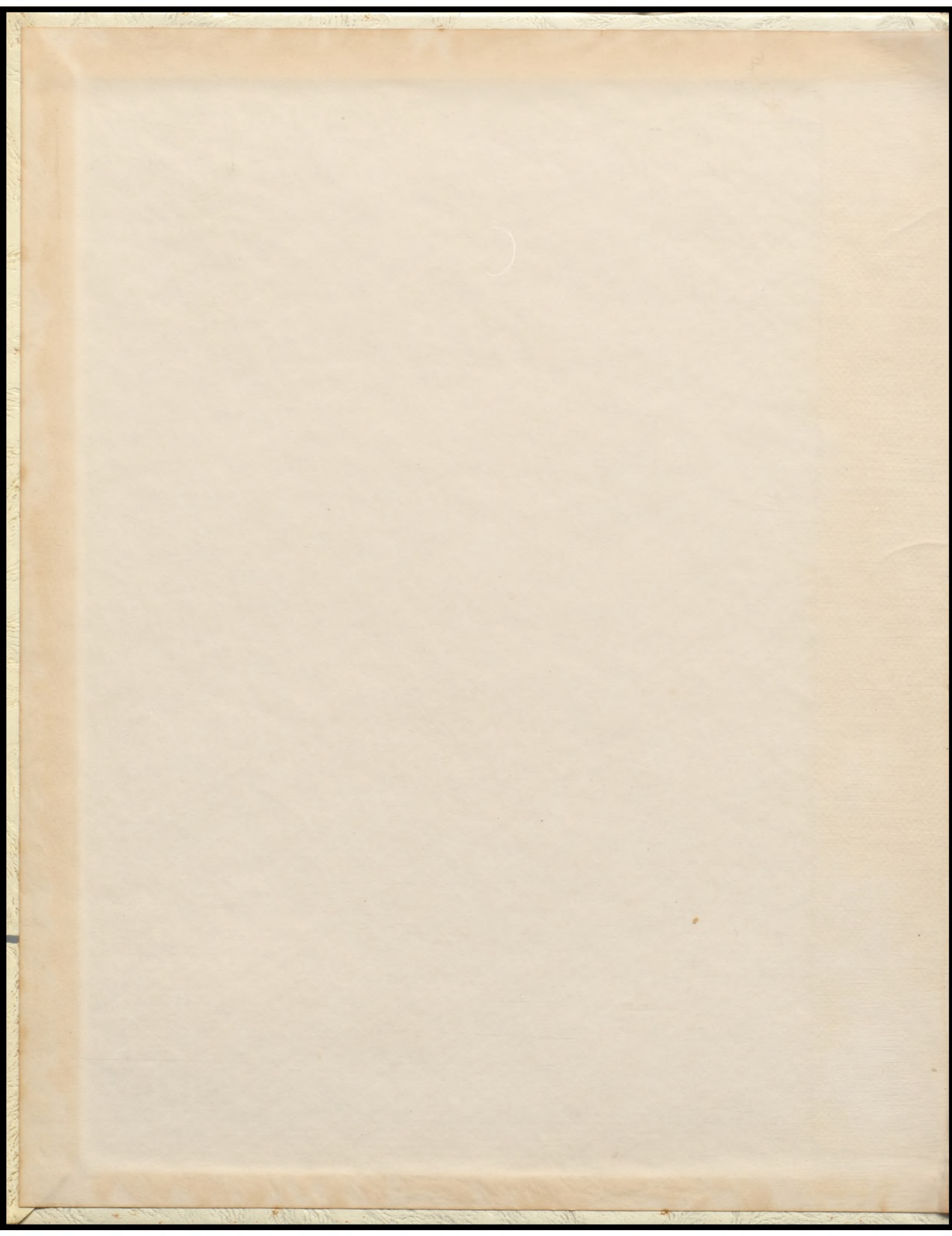


—  
H  
I  
S  
T  
O  
R  
Y



M  
Y  
S  
T  
I  
C







# Cameron, Missouri, High School



Publications  
Class



presents  
The 1955

MYSTIC

# History of Cameron Public School

We, the Mystic Staff of Cameron High School, in order to form a more perfect annual, establish clarity in thought, insure pleasure, provide for future reference, promote a feeling of nostalgia, and secure a chest of memories to ourselves and our comrades, do erect and establish this Mystic in memory of our forefathers, the builders of the past; and to honor our parents and patrons of this district who are the builders of the present.

This scene depicts Cameron at a very early date; the exact time is unknown. The six prairie schooners brought early settlers to our community. To the pioneers, we are grateful for their part in establishing the Cameron Community and assisting in the development of private and public schools.



## Cameron Pioneer Days

The first school built in Cameron was a small, one story building erected in 1851. The building fund was financed by private donations. It was located on Third Street near the corner of Pine Street, or the approximate site of the Presbyterian Church. The first teacher was Mr. Thomas Harries.

The present public schools of Cameron were organized under the village act. December 4, 1871.

The erection of a stately structure was completed early in the summer of 1872; it contained eight large rooms. The building cost approximately \$34,000.00. The lots, on which the building was erected, were located on Fourth Street, opposite the city park and extended north to Fifth Street.

This building served the children of Cameron until 1914, when the present Junior High School Building was erected.



## First High School Building

The McKinley Elementary School, better known as the South Side Elementary School, was located on Prairie Street between Cedar Street and Harris Street. It was a two story structure made of brick.

The first session of school was opened in the fall of 1896 with a faculty of four teachers. They were: Miss Mary Brown, Miss Winnie Nelson, Miss Maude Hamer, and Miss Lillie Holtzapple, who was the principal. Mr. B. Riggs was superintendent of the Cameron Public Schools.

This school served the children who lived south of the Burlington Railroad tracks until the fall of 1947 when it was abandoned. The structure was sold to J. R. Kirkendoll.



McKinley School

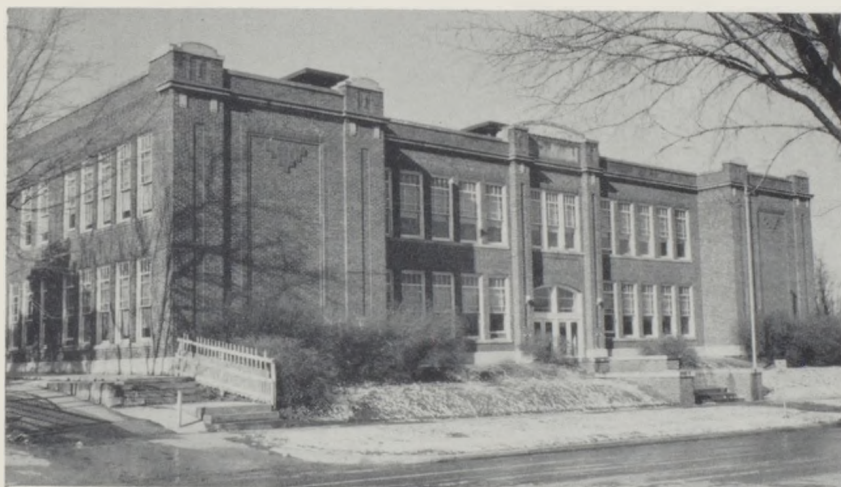
The elementary grade schools were merged; the upper four grades were held in the old high school building, now known as the Junior High School Building. The four lower grades were taught in the Goodrich Building. This building is located on Fourth Street, opposite the city park. It was constructed in 1914.

This edifice was made of brick, its exterior dimensions were 135 feet by 85 feet. It cost \$55,000.00 to construct and \$5,000.00 was spent to equip the building. High school classes were conducted on the second floor, and grades one through eight were taught on the first floor.

In 1947 it became the Junior High School Building. At the present time the junior high students receive instruction on the second floor. The superintendent's attractive office is located near the front entrance of the building. The intermediate grades are taught in the various rooms on the first floor. The kindergarten and the cafeteria are located in the basement rooms.



## Junior High School



## Goodrich School

Superintendent A. C. Gwinn, and the Board of Education: Mr. N. S. Goodrich, Mr. G. Sloan, Mr. J. N. Ellis, Mr. Lyle Allen, Mr. Neil Uhl, and Mr. Wright---planned and supervised the construction of the edifice. The building was named for Mr. N. S. Goodrich, who was the senior member of the board. Mr. Goodrich served as a member of the Cameron Board of Education for fifty years.

A colored school has been supported by the Cameron citizens for many years. The Douglas School is a modern building located on South Nettleton Street. It was erected in 1943.

The Goodrich Elementary School was built in 1924. It is a two story modern brick structure which contains eight large classrooms, a library, a lounge, an office, and an auditorium. All school activities which require a stage or a gymnasium are held in the Goodrich Auditorium.



## Douglas School

The Missouri Wesleyan College was founded in 1883 as the Cameron Institute by nine men. In November 1886, the present property was purchased, and December the same year it was offered to the Methodist Conference. The Missouri Conference met in March 1887 and took favorable action.

Missouri Wesleyan College prospered for many years as an accredited school. Later it was consolidated with Baker University.

The Cameron Public School System purchased the college property in 1946. It is located on South Chestnut Street, facing Ford Street.

The structure was remodeled for modern high school needs. The first high school classes were taught in this building in September 1947.

The present high school program offers a choice from general education to college preparatory.



## Cameron High School

The Cameron Public High School is a member of the North Central Association of Secondary Schools and Colleges. The Cameron School system is classified as an AAA school by the State Department of Education.

The following men have served the Cameron Public Schools as Superintendents:

Mr. McVay		G. E. Dille	1924--1925
B. Riggs		E. A. Elliot	1925--1928
Mr. Wilson		C. C. Crosswhite	1928--1931
B. Riggs	1896--1905	Leonard Hosman	1931--1938
J. F. Treasure	1905--1907	Finis Frazier	1938--1944
W. C. Urban	1907--1918	Hugh D. Welch	1944--1947
A. C. Gwinn	1918--1924	J. Olin Teasley	1947--

We are indebted to many former writers and a number of individuals of the present day for the facts given in regard to the Cameron Public Schools. A story of progress, such as the Cameron Public Schools, has no ending. We feel sure the builders of the present and future will continue its progress.

What wonderful changes a century of progress has brought to the Cameron Public School System. Today our students enjoy modern buildings, modern methods of instruction, competition on the basketball court and football field where a century ago the wild animals roamed and the Indian War Whoops were heard.



# Cameron High School



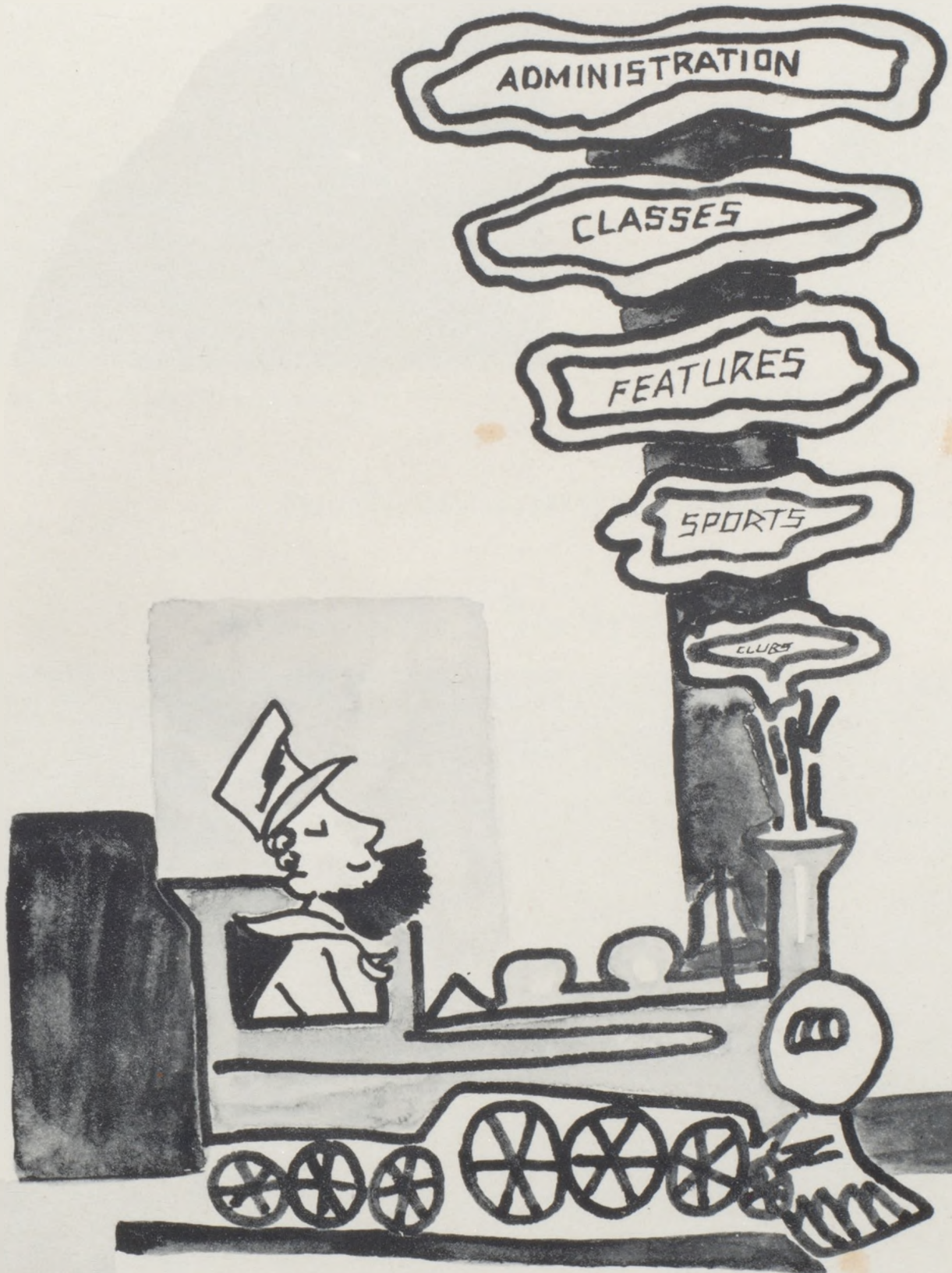
High school, high school,  
We love thee well,  
Ours is the joy, thy praise to swell,  
With voices free, we'll sing of thee,  
And ever thy praise we'll tell.

## Foreword

What is the Mystic? Does its pages hold dear memories of high school days for you? In years to come will you turn to its pages to remember how a classmate looked or which clubs you were a member? Will you turn to the sports pages to remember the 1954 football championship? Will looking at it cause a bit of nostalgia for C. H. S. and high school days? We, of the Mystic Staff have tried to make it do these things. We have done our best.

We trust your criticism will be just and considerate.

THE STAFF



bill blossom



SUPERINTENDENT J. O. TEASLEY

Superintendent Teasley has made Cameron High School an outstanding school for its size. He pioneered the AAA classification for the Cameron Public School System.

We appreciate his ability and service.



Superintendent Teasley, Sandra and Mrs. Teasley

## Administration

## Board of Education



ROW I: R. Brown, E. Osborn, J. Kirkendoll, E. Blackwood, M. Ruth, Q. Kemper.

ROW II: C. Groom, Superintendent J. O. Teasley, S. Hiner.



Principal Baker, Linda, Stephen, Randy, Mrs. Baker and Marilyn



PRINCIPAL RAY J. BAKER

Mr. Ray Baker pioneered the Guidance and Diversified Occupation program in Cameron High School.

We admire him for his patience, and understanding as a principal.

## C. H. S.



Through these portals pass young men and women seeking the knowledge which will prepare them to face the future with warm courage and high hopes.



EARL H. BAKER  
Hygiene  
Athletics  
Boys' Physical Education

MR. LOUIS G. CLARK  
Guidance Counselor  
Diversified Occupation



# Faculty

MRS. THOMAS DEEM  
History



JOE E. COLLIER  
Science  
Biology  
Chemistry



MRS. MICHAEL DRITCH  
English  
Publications

ROBERT GILL  
Industrial Arts  
Basketball Coach



JAMES HILL  
Art Instructor



CHARLES W. HILL  
Vocational Agriculture



J. LOWELL JONES  
Commerce  
Assistant Coach





MISS MARY A. KLEPPER  
Library  
Study Hall

ANTHONY LEMA  
Mathematics  
Assistant Coach



# Faculty

STAN SUMMERS  
Band Director



MRS. FAUNA OVERLAY  
Speech-Drama  
English



MISS BILLIE WILSON  
Girls' Physical Education



CHARLOTTE VANDRELL  
Vocational Home Economics



MRS. RALPH McELWAIN  
Social Studies

MISS BARBARA UTT  
Vocal Music

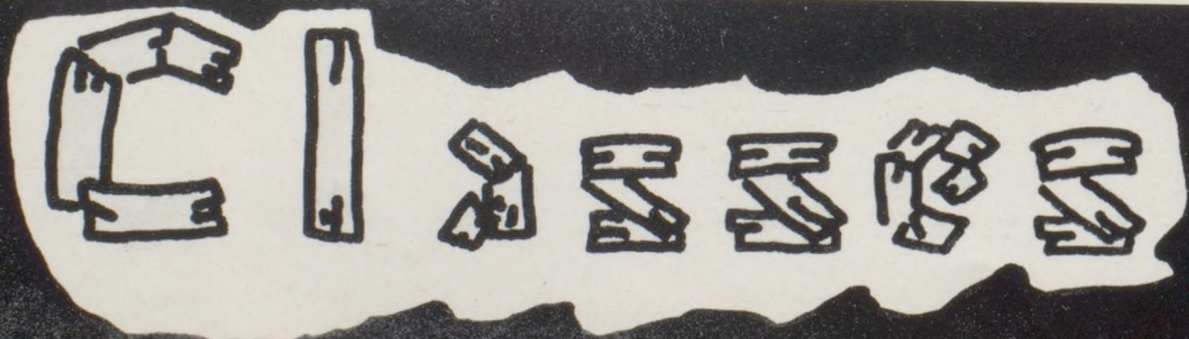


BENNIE BYERS  
Secretary To Superintendent



PEGGY THOMPSON  
Secretary To Principal

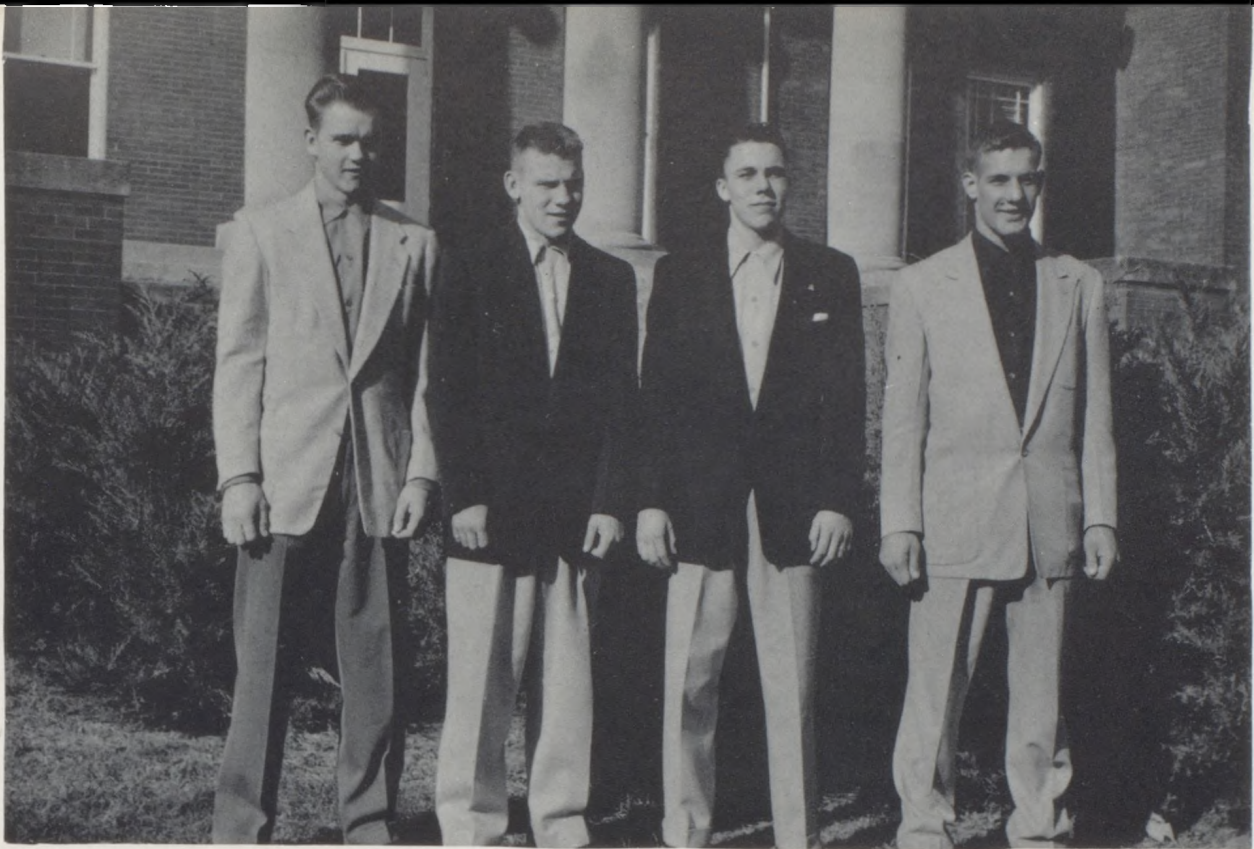






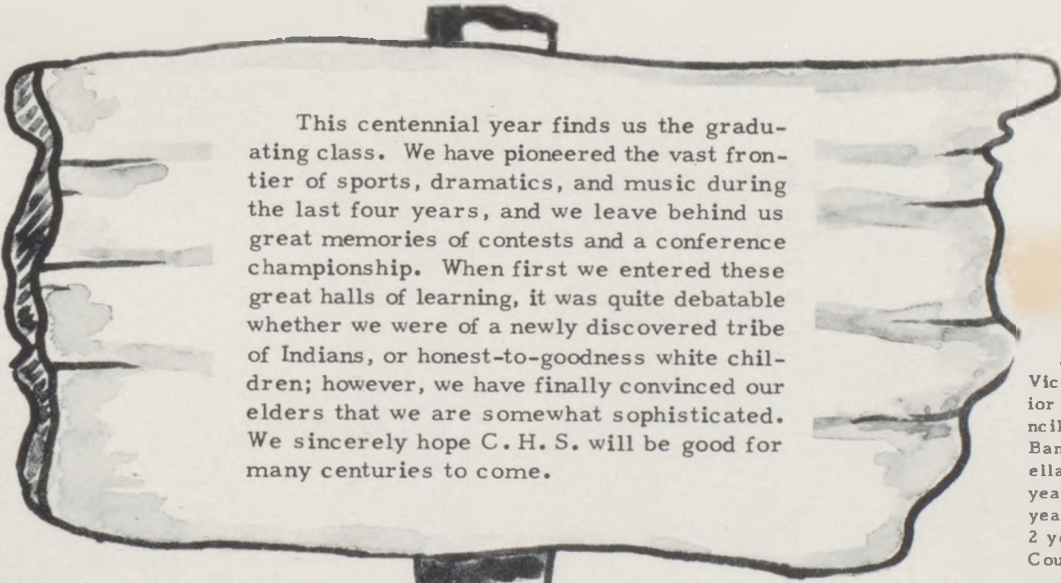
# SENIOR

# CLASS



S. Simpson . . . . . Vice-President  
L. Burns . . . . . Secretary

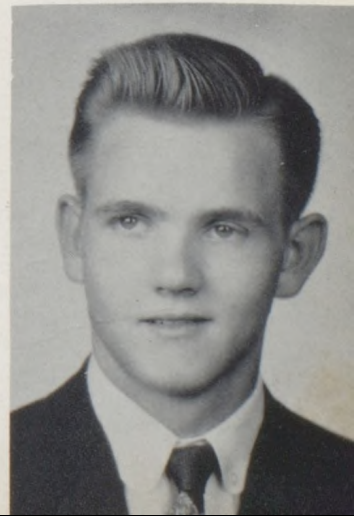
J. Osborn . . . . . President  
G. Howard . . . . . Treasurer



This centennial year finds us the graduating class. We have pioneered the vast frontier of sports, dramatics, and music during the last four years, and we leave behind us great memories of contests and a conference championship. When first we entered these great halls of learning, it was quite debatable whether we were of a newly discovered tribe of Indians, or honest-to-goodness white children; however, we have finally convinced our elders that we are somewhat sophisticated. We sincerely hope C. H. S. will be good for many centuries to come.

**JACK OSBORN**  
President of Junior and Senior Class, Basketball 4 years, Band 4 years, Track 4 years, C Club 2 years, Junior Play, Variety Show 2 years, Masque and Gavel 3 years, A Cappella 2 years.

**SAM SIMPSON**  
Vice-President of Senior Class, Student Council Vice-President, Band 3 years, A Cappella 3 years, D.O. 1 year, Boys' Glee Club 2 years, Student Council 2 years, Sophomore Count, Art 1 year.





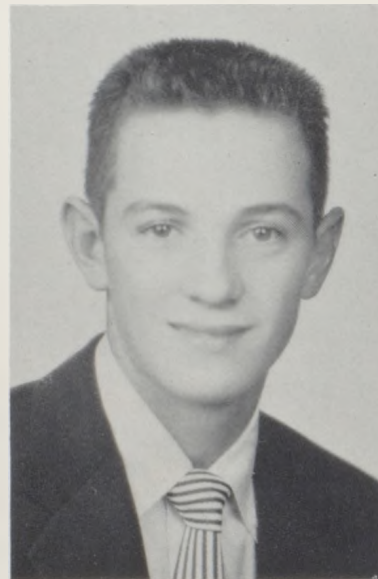
**CONLEY ADAMS**  
 Student Council 1 year, F.F.A. 2 years, Band 1 year, A Cappella 1 year, D.O. 2 years, Drivers Training 1 year.



**EMILY AKEY**  
 Senior Play, Junior Play, Masque and Gavel 3 years, Secretary 1 year, Variety Show 3 years, Speech Contest, Student Council 1 year, Dragonettes 4 years, F.H.A. 4 years, Treasurer and Vice-President 2 years, Mystic Co-Editor, Band 3 years.



**JANE BAKER**  
 Tank Staff 1 year, Band 2 years, Secretary-Treasurer of Athletic Club 1 year, Dragonettes 2 years, Art 3 years, Basketball 2 years, Volleyball 2 years, Mystic Staff, Art Club 1 year.



**LEE BENNETT**  
 President of Student Council 1954-'55, Member of Student Council 4 years, Senior Play, F.F.A. 4 years, President 1 year, Class Officer 3 years, Junior Play, C Club 2 years, Variety Show 2 years, Boys' State.



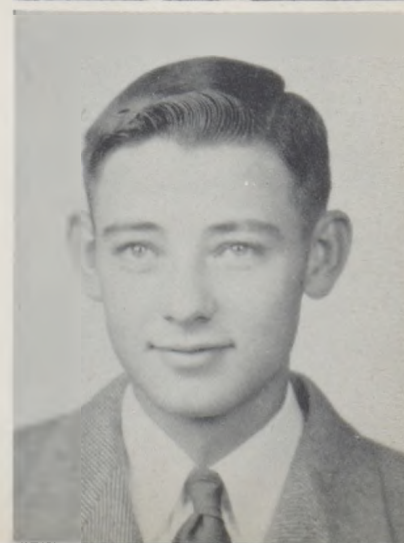
**PAT BILLINGS**  
 Girls' Glee Club 2½ years, A Cappella 2½ years, Music Contest.

**MARION BIRD**  
 Student Council 2 years, F.F.A. 3 years, Junior Play, Masque and Gavel 3 years, Masque and Gavel Treasurer 1 year, Contest Play 1 year, Senior Play, Band 1 year, Tarkio Speech Contest 2 years, State Speech Contest 1 year.



**BILL BLOSS**  
 F.F.A. 2 years, P.E. 3 years, Art 3 years, Shop 1 year, Mechanical Drawing 1 year.

**JERRY BOTTS**  
 F.F.A. Vice-President 2 years, F.F.A. 4 years, Track 1 year, Freshman Assembly, Farm Mechanics Team, Field Crops Team, Drivers Training.





**HELEN BRUCH**  
 Band and Drum Major 4 years, Dragonettes, F.H.A., Masque and Gavel President 1 year, All State and Orchestra, Junior Play, Mixed Chorus 4 years, Sophomore Class President, Student Council 2 years, State Music Contest 4 years.



**MERWYN BUCK**



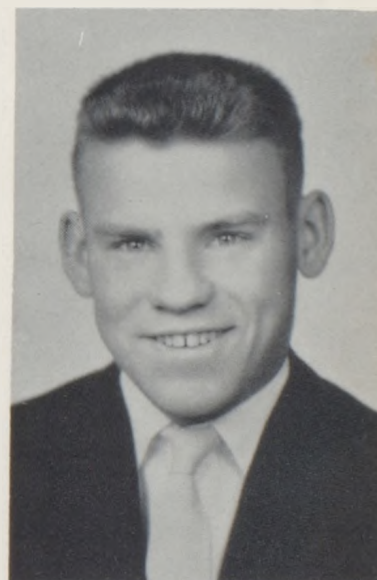
**RONALD BUCK**  
 D.O. Club



**NANCY BURNETT**  
 F.H.A. 4 years, Basketball 3 years, Volleyball 3 years, Drivers Education 1 year, D.O. Club 1 year, Art 1 year.



**NORMAN BURNETT**  
 F.F.A. 2 years, D.O. 1 year, A-1 Club 1 year, Drivers Training 1 year, Crop Team to Columbia 1 year, Pen Pal Club 2 years.



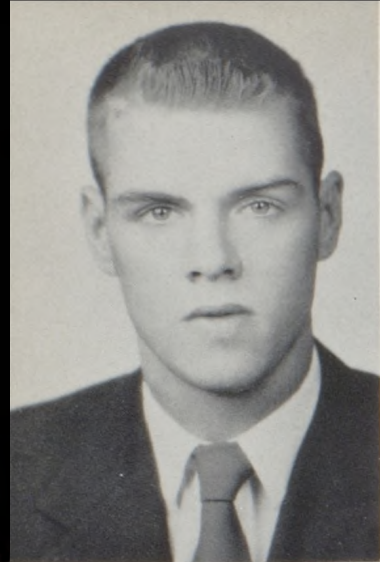
**LYLE BURNS**  
 Secretary of Class 2 years, Boys' Quartette, A Cappella 4 years, Football 4 years, President of C Club 1 year, Track 4 years, C Club 3 years, Band 2 years, Glee Club 2 years, Variety Show 1 year.



**ELMER CLARK**  
 Agriculture 4 years, Physical Education 4 years, Agriculture Shop Contest and Field Crop Contest 2 years, Parliamentary Procedure Team 2 years, Senior Play.



**LYRLE CLAWSON**  
 Masque and Gavel 3 years, Sophomore Pilgrimage, Dragonettes 2 years, Junior Play, Band 4 years, Speech Contest 2 years, D.A.R. Contest, F.H.A. 3 years, Variety Show 3 years, A Cappella 3 years.



**BILL CRAWFORD**  
 Football 4 years, Basketball 4 years, Track 4 years, Secretary of C Club, Masque and Gavel, Variety Show, Student Council, Junior Play, Senior Play, A Cappella.



**JERRI GAIL DAVIS**  
 F.H.A. President and Secretary, Band President and Secretary, Tank Editor, Student Council 1 year, Dragonettes 2 years, State Speech Contest 2 years, Music Contests 4 years, Masque and Gavel 3 years, Junior Play, Senior Play.



**BILL DEFREECE**  
 C Club 2 years, Football 2 years, Co-Captain '54, Basketball 3 years, Band 3 years, Vice-President of Junior Class, Vice-President of C Club, A Cappella 3 years, Variety Show, Junior Play.

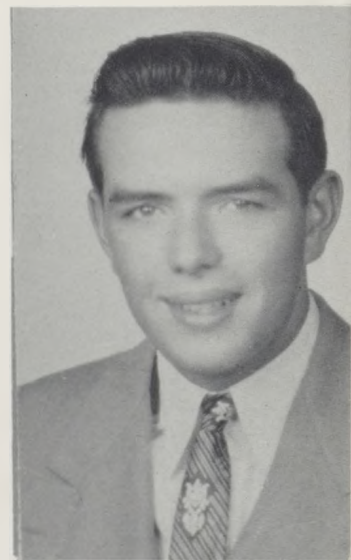


**YVONNE EDWARDS**  
 A Cappella 3 years, Girls' Glee Club 3 years, Dragonettes 2 years, Sophomore Countess, Majorette 1 year, F.H.A. 3 years, Tank Staff 1 year, Co-Editor of Mystic 1 year, Volleyball 2 years, Basketball Captain 1 year.



**ROBERTA FILLEY**  
 Drivers Training 1 year, Art 1 year, Basketball 2 years, F.H.A. 3 years.

**RONNIE FILLEY**  
 F.F.A. 2 years, C Club 2 years, Art 1 year, D.O. 1 year, Sergeant-At-Arms of D.O. Club 1 year, Drivers Training 1 year, Football 2 years, Track 2 years, Senior Play.



**KAREN FOLAND**  
 Girls' Glee Club 1 year, Art 1 year, F.H.A. 1 year, Drivers Training 1 year, Athletic Club 1 year, Basketball 1 year, Volleyball 1 year.

**DONNA FOSTER**  
 Majorette 4 years, Glee Club 2 years, Girls' Quartette 1 year, A Cappella 2 years, Masque and Gavel 3 years, Variety Show 2 years, F.H.A. 3 years, Junior Play, Dragonettes 4 years, Senior Play.





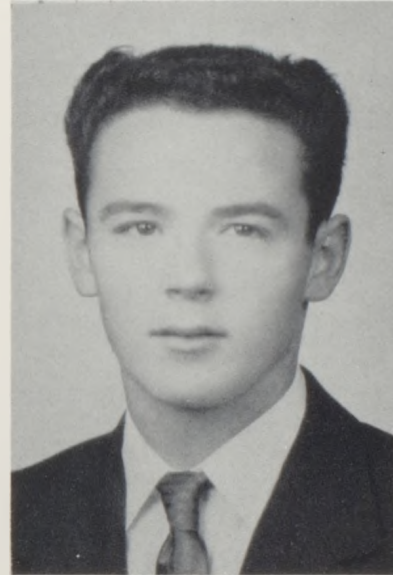
**ELBERT FRY**  
 Shop 2 years, Art 2 years, Drivers Education 1 year, Agriculture 1 year, D.O. 1 year, Christmas Play 1953.



**STANLEY GRIFFIN**  
 Football 3 years, Basketball 2 years, Track 3 years, C Club 2 years, A Cappella 2 years, Student Council 1 year, F.F.A. 2 years, D.O. 1 year, Drivers Education 1 year.



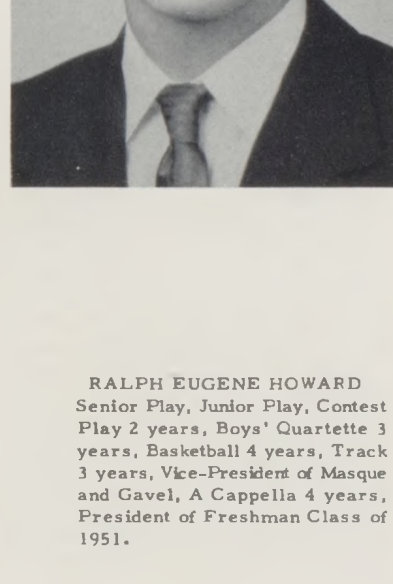
**BETTY HAYWARD**  
 Athletic Club 1 year, F.F.A. 4 years, Basketball 4 years, Volleyball 4 years.



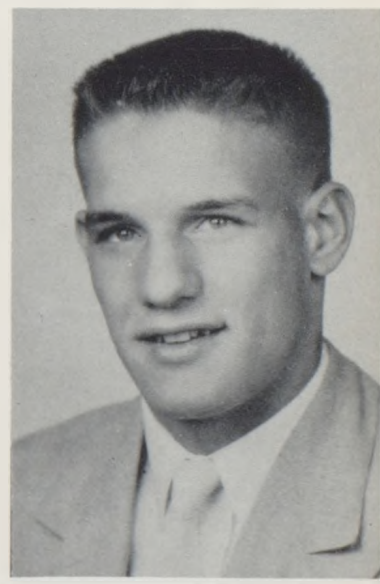
**SAMMY HINER**  
 Football 3 years, Basketball 3 years, Track 4 years, C Club 2 years, Band 3 years, A Cappella 2 years, Junior Play, Variety Show, Glee Club 2 years, Boys' State 1 year.



**BENITA LEE HOWARD (BENNIE)**  
 F.F.A. 3 years, Masque and Gavel 1 year, Tank Staff 1 year, Mystic Staff 1 year, Variety Show 1 year, Glee Club 1 year, A Cappella 2 years, Athletic Club 1 year, Drivers Education.



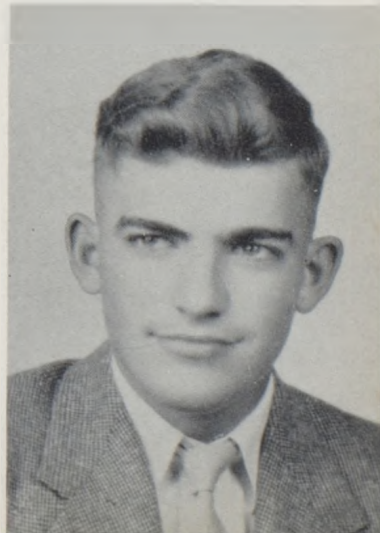
**RALPH EUGENE HOWARD**  
 Senior Play, Junior Play, Contest Play 2 years, Boys' Quartette 3 years, Basketball 4 years, Track 3 years, Vice-President of Masque and Gavel, A Cappella 4 years, President of Freshman Class of 1951.



**STACEY E. HUTTON**  
 Band 4 years, Track 3 years, Football 2 years, A Cappella 3 years, Boys' Quartette 2 years, C Club 2 years, Pep Band 2 years.



**HARLENE HUGHES**  
 Home Room Secretary 1 year, Pep Squad 1 year, Thespians 1 year, Tau Phi Gamma 2 years, Philogeans 1 year, Y-Teens Representative 1 year, Home Room Activities Chairman 1 year, Homecoming Attendant 1 year, Dragonettes 1 year, D.O. Club.





**CHARLIE JOHNSON**  
 Band 4 years, D.O. 2 years,  
 President D.O. 1 year, Drivers  
 Training 1 year, Sophomore As-  
 sembly, Art 2 years, Hygiene 1  
 year, P.E. 2 years.



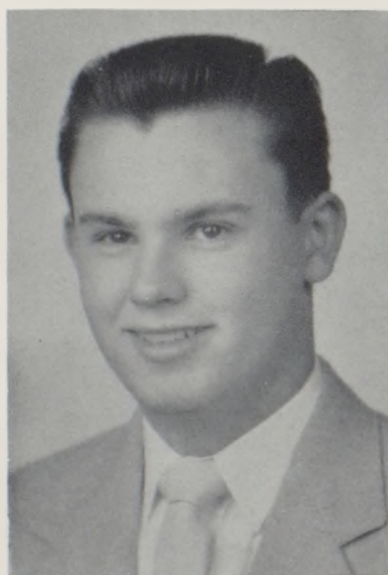
**SHIRLEY JOHNSON**  
 A Cappella 2 years, F.F.A. 3  
 years, Basketball 2 years, Band  
 3 years, Freshman Assembly,  
 Drivers Education 1 year, Art  
 1 year.



**PAT MARIE JONES**  
 A Cappella 1 year, Dragonettes  
 1 year, F.H.A. 4 years, Band 4  
 years, Feature Editor of Mystic  
 1 year, Drivers Training, Basket-  
 ball 2 years, Volleyball 2 years,  
 Pep Band 3 years, Clarinet  
 Quartette 1 year.



**SHIRLEY JONES**  
 Band 3 years, Dragonettes 2  
 years, Art 1 year, F.H.A. 2 years,  
 Freshman Assembly, Volleyball  
 Captain 1 year, Basketball 3  
 years, Athletic Club 1 year,  
 President of Athletic Club 1 year.



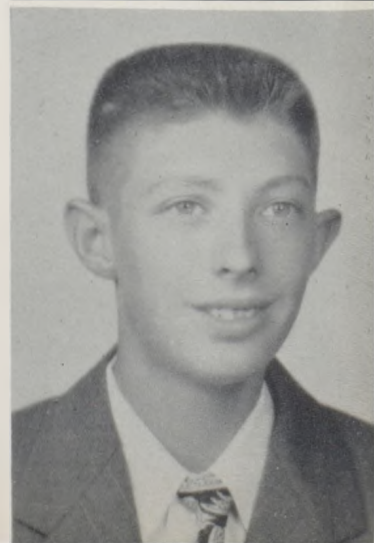
**LEWIS JUDSON**  
 Boys' Quartette 2 years, Boys'  
 Glee Club 2 years, Band 3 years,  
 A Cappella 4 years, Junior Play,  
 Contest Play 2 years, Senior  
 Play, Masque and Gavel 3 years,  
 Variety Show 2 years.



**BARBARA RUTH KRESSE**  
 Student Council 1 year, F.H.A. 4  
 years, Office 2 years, Cafeteria  
 1 year, Publications 1 year,  
 Basketball 1 year, Volleyball 1  
 year, Art 1 year.



**DON LAUGHLIN**  
 Shop 1 year, Art 1 year, Football  
 1 year, D.O. 2 years.



**BILL LEWIS**  
 Basketball 1 year, Track 1 year,  
 Art 2 years, Art Club 1 year,  
 Christmas Play 1 year, D.O. 1  
 year, Shop 2 years.



**ALICE JOHN McCABE**  
Masque and Gavel, Dragonettes 2 years, Band 4 years, F.H.A. 3 years, Mixed Clarinet Quartette 3 years, Girls' Quartette 1 year, Girls' Glee Club 1 year, A Cappella 2 years, Junior Play, Senior Play.



**MARTHA McCOLLOCH**  
Student Council 1 year, Girls' Glee Club 2 years, A Cappella 3 years, Art Club 1 year, F.H.A. 4 years, F.H.A. Treasurer 1 year, Homecoming Attendant 1 year.



**DON McCOOL**  
Art Club Treasurer 1 year, Art Club 1 year, Masque and Gavel 2 years.



**MARGARET McVICKER**  
Cheerleader 1 year, Dragonettes Vice-President 1 year, Contest Play 2 years, Masque and Gavel 3 years, Junior Play, Senior Play, Student Council 1 year, Co-Editor of Mystic 1 year, Basketball Champions 1951-'52, Athletic Club 1 year.



**SHARYL MOGG**  
Cheerleader 3 years, President of Dragonettes 1 year, Student Council 1 year, Variety Show 2 years, Masque and Gavel 3 years, Parliamentarian of F.H.A. 1 year, Contest Play 2 years, Junior Play, Senior Play, Basketball Championship 1953-54.



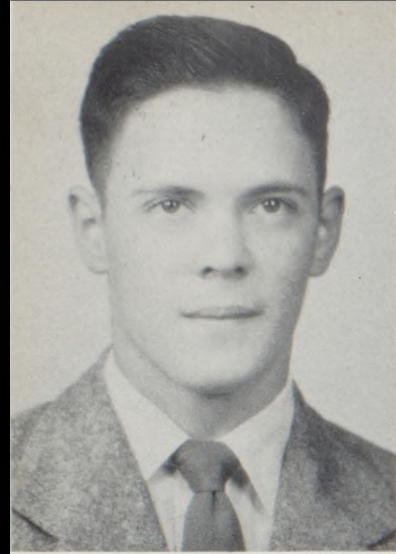
**FRANCIE O'CONNOR**  
F.H.A. 4 years, Dragonettes 2 years, Co-Editor of Tank 1 year, Masque and Gavel 3 years, Class Assemblies 3 years, A Cappella 1 year, Variety Show 2 years, Junior Play, Basketball 3 years, Senior Play.



**GLEN O'DELL**  
Art 2 years, D.O. 1 year.

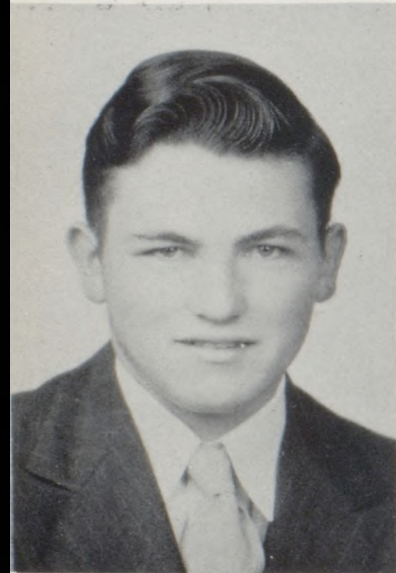


**BONNIE PARRACK**  
Band 2 years, F.H.A. 3 years, Tank-Mystic Staff 1 year, Art Club 1 year, A Cappella 2 years, Girls' Glee Club 2 years, Art Editor of Publications 1 year, Publications 1 year, Freshman Assembly, Drivers Training 1 year.



**TOMMY POTTS**  
 Student Council 1 year, D.O. 1 year, Band 3 years, A Cappella 1 year, Boys' Glee Club 1 year, C Club 1 year, Basketball 1 year, Track 3 years.

**NORMA RICHARDSON**  
 F.H.A., Art Club, Senior Play.



**DUANE SLATES**  
 A Cappella 2 years, C Club, Track 2 years, Football 2 years.

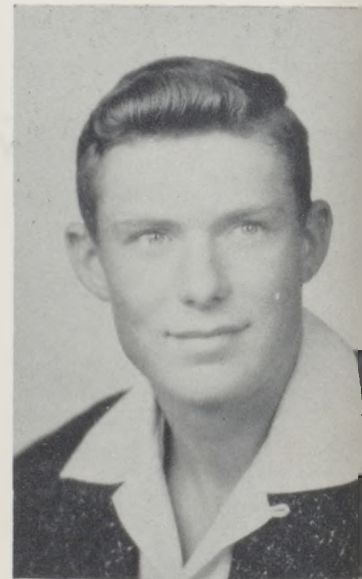


**JANEEN SMITH**  
 F.H.A. 4 years, Girls' Glee Club 2 years, Band 4 years, Junior Play, A Cappella 3 years, Tank and Mystic Staff 1 year, Masque and Gavel 1 year, Dragonettes 2 years, Pep Band 4 years.



**LEROY WALDRON**  
 D.O. 2 years, Shop 1 year, Art 1 year, Football 2 years, Track 1 year.

**GEORGE WALLACE**  
 Football 1 year, Track 2 years, F.F.A. 4 years, Farm Shop and Contest, Field Crop Contest, Treasurer of F.F.A. 1 year, Secretary of F.F.A. 1 year.



**PAT WIEDMAIER**  
 Sophomore Assembly, Basketball 4 years, Basketball Captain 1 year, Volleyball Championship Team 1 year, D.O. Club 1 year, D.O. Secretary and Treasurer 1 year, Art 1 year.

**ANNE WELCH**  
 Cheerleader 2 years, Sophomore Class Treasurer, Masque and Gavel 3 years, Music Contest 4 years, A Cappella President 1 year, Junior Play, Variety Show 4 years, Art Club President 1 year, Mixed Quartette 3 years, Homecoming Queen 1954.







"I Don't Wanna!"



Biology?? Hmm



Flirtin'

Wow!



S  
E  
N  
I  
O  
R  
S

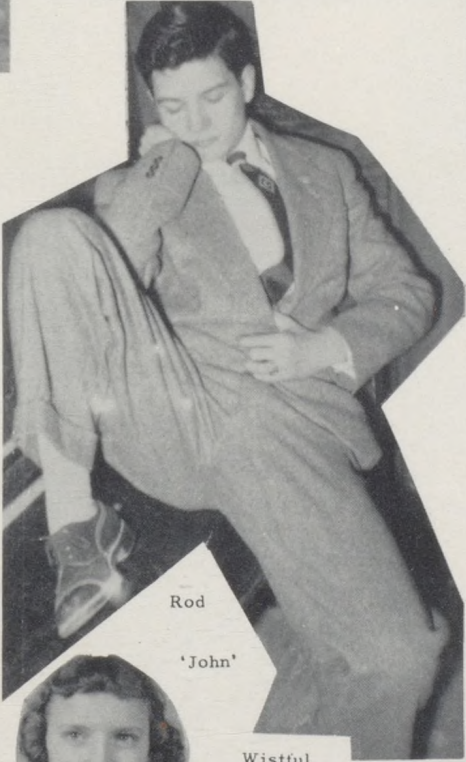


"In The Good Old Summertime."



"Because"  
Sleepy-Heads

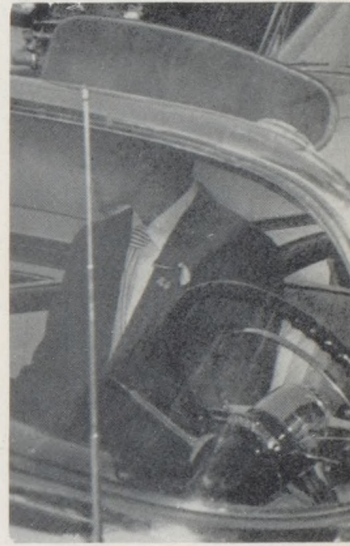
"Hi!"



The Stooges



Well!



Wheel



Different



'Clos'



Long Ago



Grrrrr!

Rod

'John'

Downhearted



Wistful

"Tell Us, Girls."

Mischief

Yea!

"Gone Fishin'"



"Too Young"



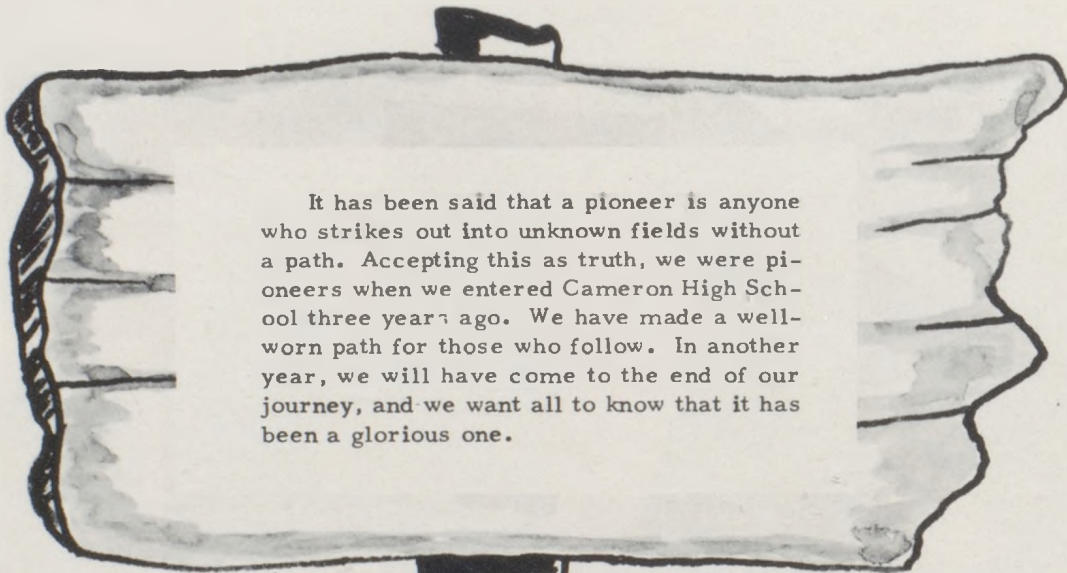
# JUNIOR

# CLASS



S. Hawkins . . . . . Secretary  
 W. Richard . . . . . Sergeant-At-Arms

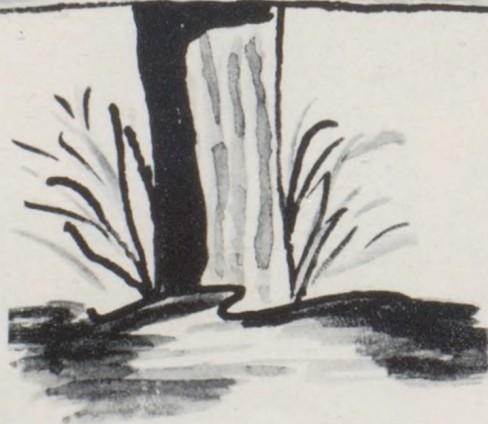
B. Wells . . . . . President  
 S. Wages . . . . . Vice-President  
 S. Rauber . . . . . Treasurer



It has been said that a pioneer is anyone who strikes out into unknown fields without a path. Accepting this as truth, we were pioneers when we entered Cameron High School three years ago. We have made a well-worn path for those who follow. In another year, we will have come to the end of our journey, and we want all to know that it has been a glorious one.

BARBARA WELLS

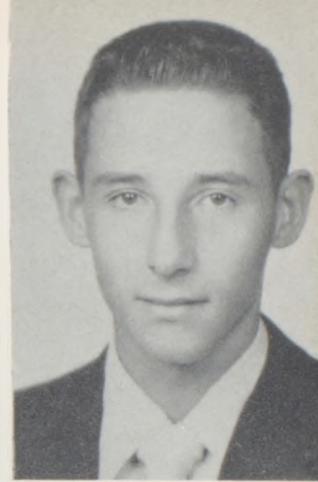
SHERRIE WAGES





LLOYD BAKER

BOB BERRYHILL



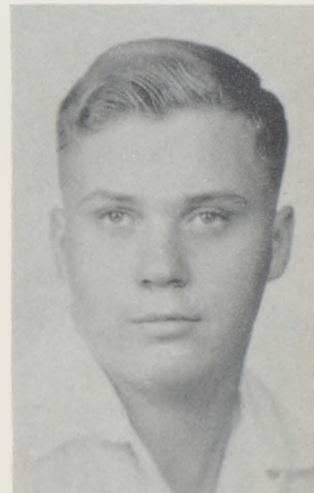
DARLENE BOWERS



TOM BROWN



MARY LOU BLOSS



MARGARETE SUE BUCK



DOROTHY BRUCH



JOHNNIE CRANOR

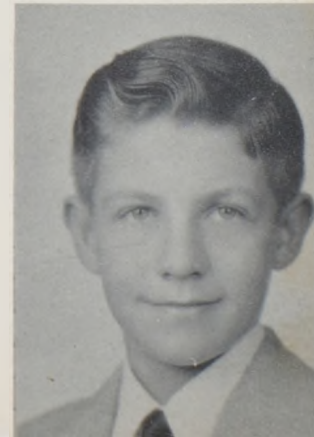


LARRY COLLINS



BILLY DON DUNN

JAMES ELSEA





NEDRA ELSTON

RAYMOND FORE



SHERI GOVER



KATHRYN GRADY



SANDRA FROST



ALFRED HAHN



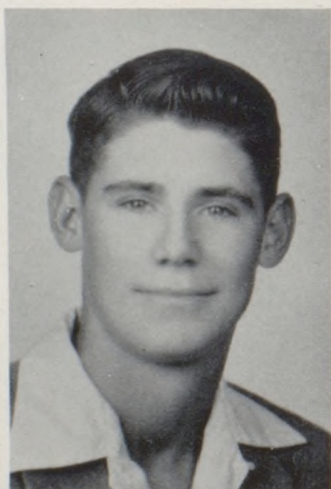
DAVID GRAHAM



SHIRLEY HAWKINS



J. D. HAHN



ALICE HINDS

HOWARD HUNTSBERRY





LINDA KEMPER

MIKE KENNEDY



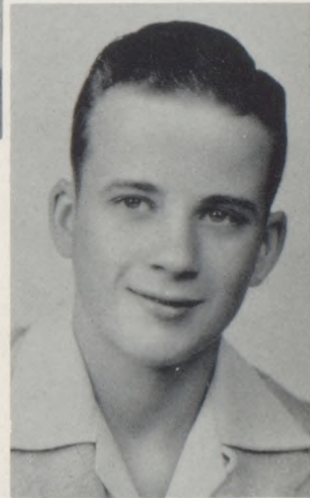
ROBERT KIRKENDOLL



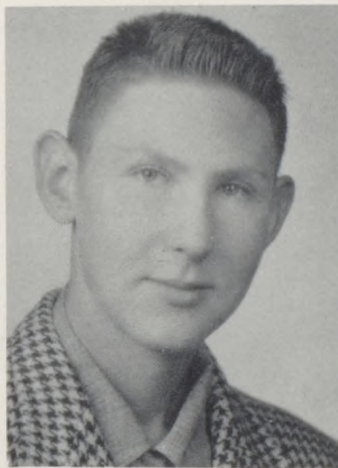
GARY LISTER



KAREN KIRKENDOLL



CLARE LOCKE



BILLY JOE LLOYD

BOB MOORE



DORIS MATTOX



DENNY O'CONNOR

FRANCES O'CONNOR



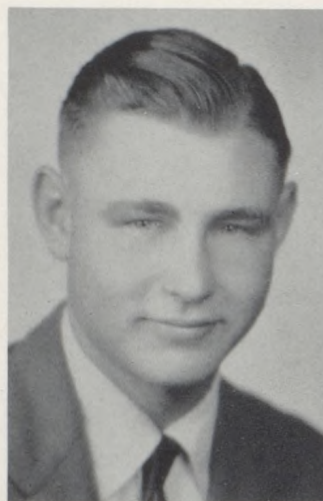


DIXIE O'DAY

JERRY PARRACK



DONALD PETERS



LARRY PUTERBAUGH



CARROLL PETERS



WARREN RICHARD



SUZANNE RAUBER



MARCIA ROGERS



ROBERT RILEY

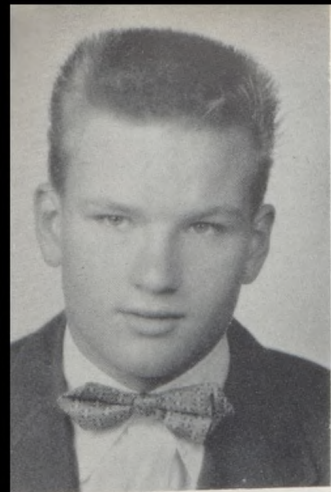


BEVERLY SHORT



JOHN STINSON





RALPH STONE

SAUNDRA TEASLEY



HOMER THOMPSON

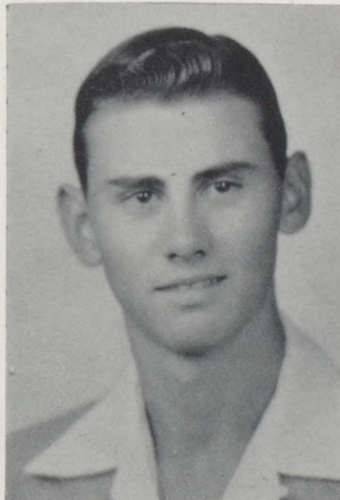
DORCAS VANDERAU



CLARK WHITEAKER



DANNY WHITE



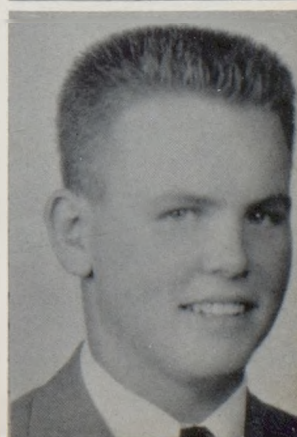
KENNY WHITNEY

NORMA WILLIS



ROBERT WORLAND

JERRY ZIMMERMAN



# SOPHOMORE



ROW I: E. Watson, B. Lane, H. Sparks, C. Hutton, S. McCord, J. Wendt, C. Hartford, Y. Mayes.  
 ROW II: I. McMurtrey, P. Leach, H. Wilcox, K. Stopplemoor, T. Kinsella, C. Long, S. Pulliam, D. Chase, F. Morgan.



# CLASS 1955

ROW I: J. Henderson, D. Diven, T. Johnson, E. Parks, L. Leutzinger, K. Helms, D. Grove, R. Smith.  
 ROW II: Miss Utt, J. Cline, J. Cech, B. Billings, G. Smith, T. Newell, E. Stade, E. Elston, R. Gentry.  
 ROW III: P. Coffman, E. Gann, D. O'Connor.



# SOPHOMORE



ROW I: C. O'Connor, L. Bray, J. Taylor, D. Fore, M. Webber, D. DeFreece, J. Pulliam.  
 ROW II: J. Sawyer, R. McVicker, J. Plymell, J. Chase, M. Huckaby, M. Waldron, J. Smith, Mr. Lema.



ROW I: S. Hill, M. Wallace, B. Casper, S. Kimes, K. Kemper, M. Elliot.  
 ROW II: R. King, J. Akey, R. Sigman, G. Babb, J. Funk, D. Dains, D. O'Brien, T. Rooney, R. Johnson.

# CLASS 1955

# FRESHMAN



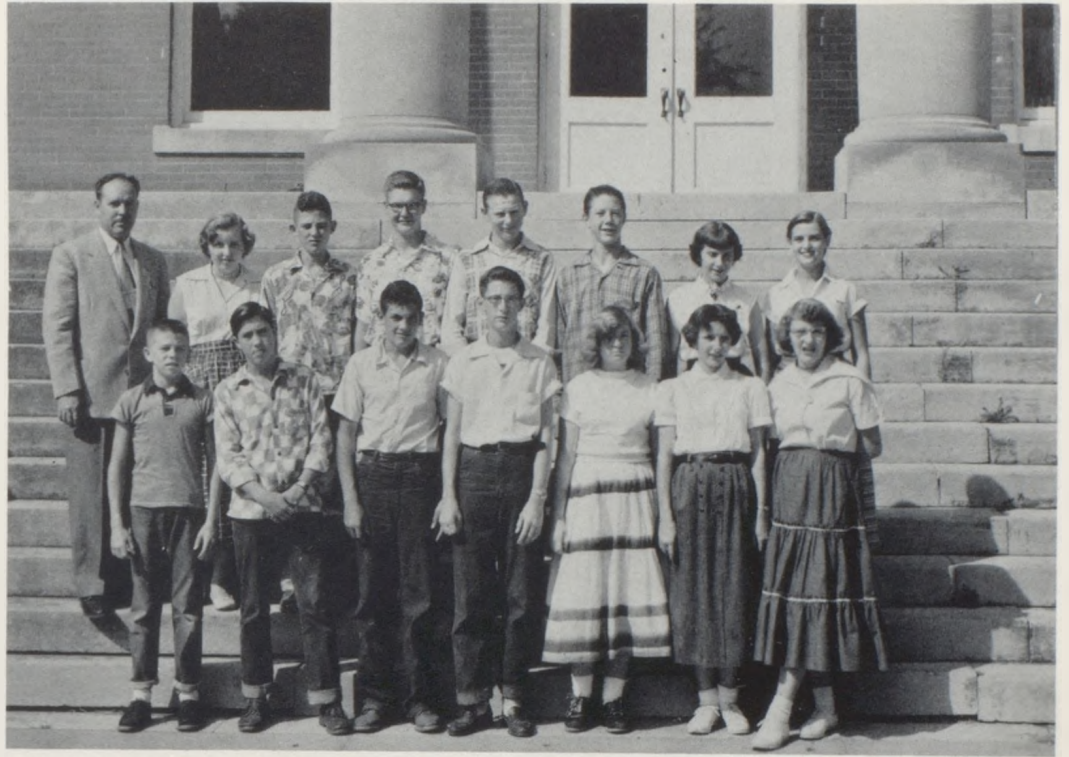
ROW I: Y. Gover, M. Cook, K. Osborn, G. Payton, B. Kessler, J. Streu, L. Newsom, B. Munders.  
 ROW II: B. Peck, J. Brennan, S. Althouse, J. Beavers, B. Lyon, P. Rachford, P. Long, C. Miller, B. Newby.



# CLASS 1955

ROW I: K. Whiteaker, L. Wood, L. Lehr, E. Gentry, J. Parrack, R. Collins, T. Reece.  
 ROW II: Miss Vandrell, S. Kanan, J. Plymell, E. Connors, N. Robidoux, B. Kirkendoll, A. Klimes, D. Neth, L. Hawkins.

# FRESHMAN



ROW I: K. Kirkendoll, C. Asher, D. Utt, A. Campbell, V. Clampitt, N. Nelson, B. Callaway.  
 ROW II: Mr. Clark, M. Leabo, B. Swords, K. Bolen, R. Gilmore, C. McVicker, B. Johnson, M. Reed.

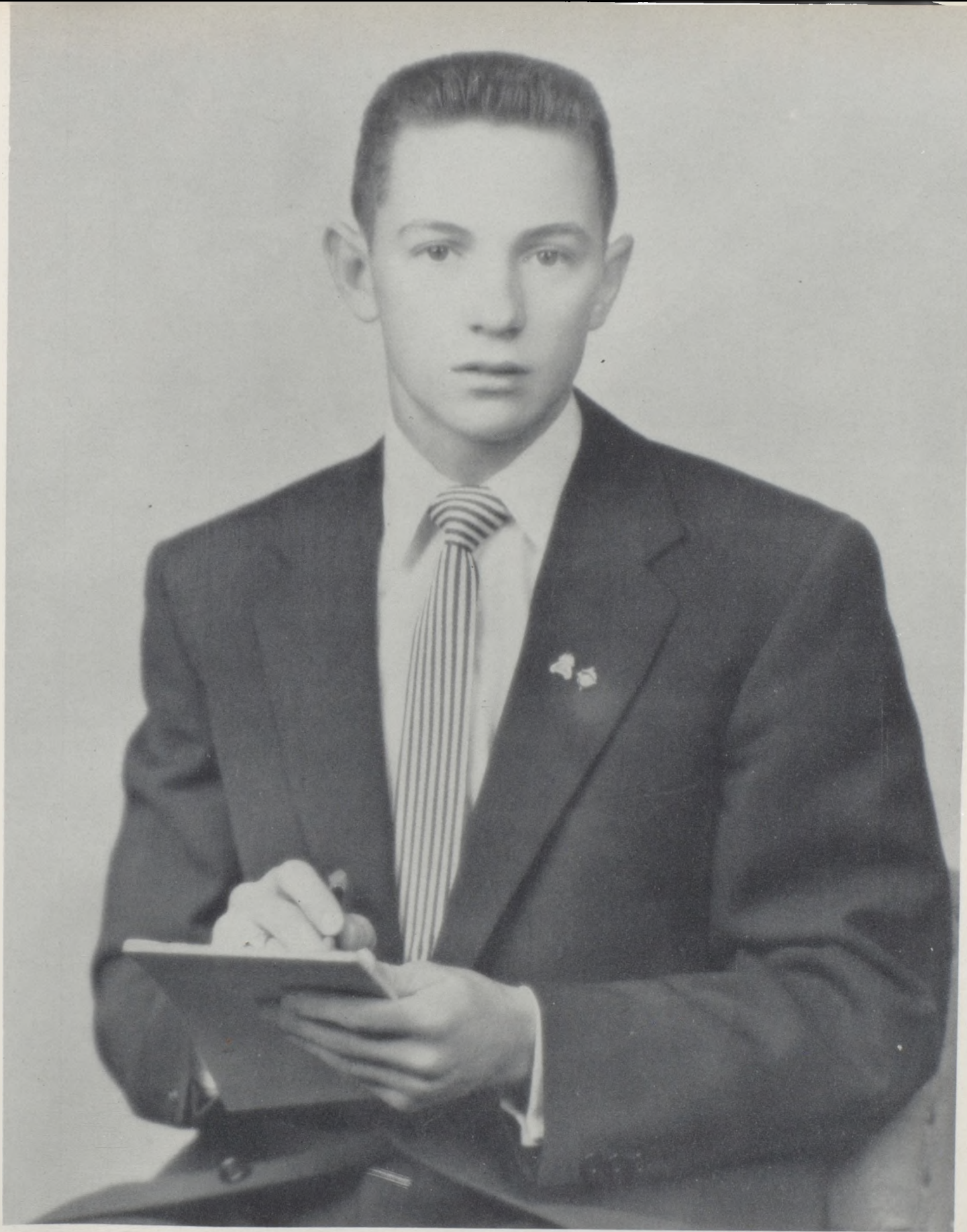


ROW I: A. McClellan, I. Walker, L. Offutt, J. Richardson, R. Sloan, L. King, D. O'Connor, R. Richard.  
 ROW II: P. Jackson, S. Rooney, N. Silver, P. Doolen, J. Bird, L. Locke, J. Dice.

# CLASS 1955



FORGETTERS



**Student Body President Lee Bennett**

# Student Council

## Student Council

Vice-President, S. Simpson; Secretary, B. Wells; Treasurer, H. Bruch; Sergeant-At-Arms, S. Griffin; President, L. Bennet.

The success of this Centennial Edition lies within the memories and achievements of its students. We, the Student Council, have tried to create memories for you, and your talents have brought the achievements.

ROW I: S. Griffin, S. Simpson, L. Bennett, B. Wells, H. Bruch.  
ROW II: Mrs. Overlay, sponsor; K. Kirkendoll, S. Teasley, B. Kresse, L. Wood, S. Mogg.  
ROW III: R. Fore, M. McCulloch, D. Fore, G. Babb, M. Bird, M. McVicker, D. Bruch, Mr. Collier, sponsor; L. Collins, J. Zimmerman.

## Student Council Members



Junior -  
Senior  
Prom  
1954





*Mystic King - Bill Defreece*



*Mystic Queen - Harlene Hughes*





## Our Queen

Here is a tribute to smiling Queen Anne,  
 A queen in each sense of the word.  
 For she was the queen of our heart and our mind,  
 None other would we have preferred.

The football boys chose her with shouts of acclaim;  
 The students revered her with songs old and new;  
 The townspeople cheered her when in the parade  
 She rode waving and smiling in her gown of dark blue

Queen Anne was our monarch on Homecoming Day,  
 In memory long will it live.  
 And Harlene and Barbara, Nancy and Sue  
 Were glad their attendance to give.

Remember that day and its queen through the years;  
 Remember her joyous, bright smile;  
 Remember her brown laughing eyes and Queen Anne  
 Will live in your thoughts all the while.

JGD



CO-CAPTAIN - Bill DeFreece  
 QUEEN - - - - - Anne Welch  
 CO-CAPTAIN - - Lyle Burns



CO-CAPTAIN - - - - - Lyle Burns  
 QUEEN - - - - - Anne Welch  
 CO-CAPTAIN - - - - - Bill DeFreece  
 DRIVER - - - - - Lewis Judson

# Homecoming

Homecoming was a complete success-- a reigning beauty, a colorful parade, and a winning football team. Anne Welch was crowned queen of the homecoming activities at a ceremony in the auditorium on Friday afternoon, October 22, 1954.



# Coronation

Sophomore Attendant - - - Susie Hill  
 Senior Attendant - - - Harlene Hughes  
 Queen - - - - - Anne Welch  
 Junior Attendant - - - Barbara Wells  
 Freshman Attendant - - Nancy Nelson





## Publications Class

The Mystic Staff wishes to thank Mr. James Hill for his supervision of the art work in the Mystic, and Mr. Lowell Jones for his co-operation in the commercial department. We appreciate the generosity of each teacher and student in helping us to make this book possible.

E. Akey, B. Kresse, J. Smith, D. O'Day.

B. Howard, B. Parrack, M. McColloch, J. Davis.





ART EDITORS  
B. Parrack  
J. Baker



TYPING  
Y. Edwards  
J. Davis  
S. Gover  
F. O'Connor



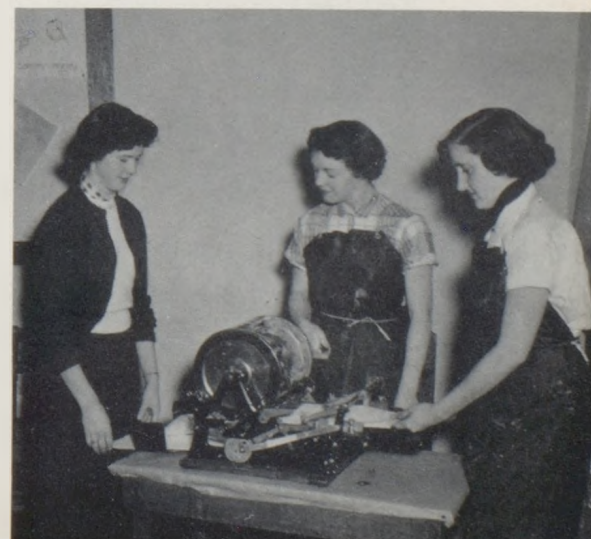
REPORTER  
B. Kresse Is Interviewing  
Mrs. Deem.



FEATURE WRITERS  
P. Jones  
B. Howard



STAPLING TANKS  
F. O'Connor  
J. Baker  
P. Jones  
Y. Edward



MIMEOGRAPH WORK  
M. McCulloch  
D. O'Day  
J. Smith

## Publications Class



F. O'Connor, J. G. Davis TANK EDITORS

MYSTIC EDITORS E. Akey, Y. Edwards

## History of the Mystic

The first annual, *The Perascope*, was published by Cameron High School students in 1919. The second annual was published in 1920. At that time the students and teachers selected the name, *The Mystic*, for the school's yearbook. This title has remained the same through the years.



ROW I: F. O'Conner, S. Gover.

ROW II: B. Howard, Mrs. Dritch, sponsor, P. Jones, Y. Edwards, E. Akey, J. Davis, B. Parrack, D. O'Day, J. Baker, J. Smith, Mr. McCulloch.



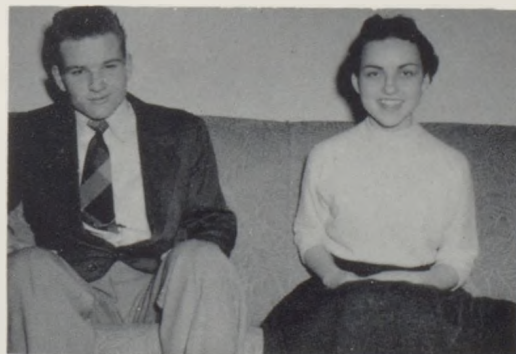
GEORGE WALLACE  
KING



SHARYL MOGG  
QUEEN

## Tank Election

Prince



Princess

Viscount Viscountess

Russell Richard, Jeanne Beavers

Count Countess

Donald Fore, Kay Kemper

Ralph Stone, Barbara Wells

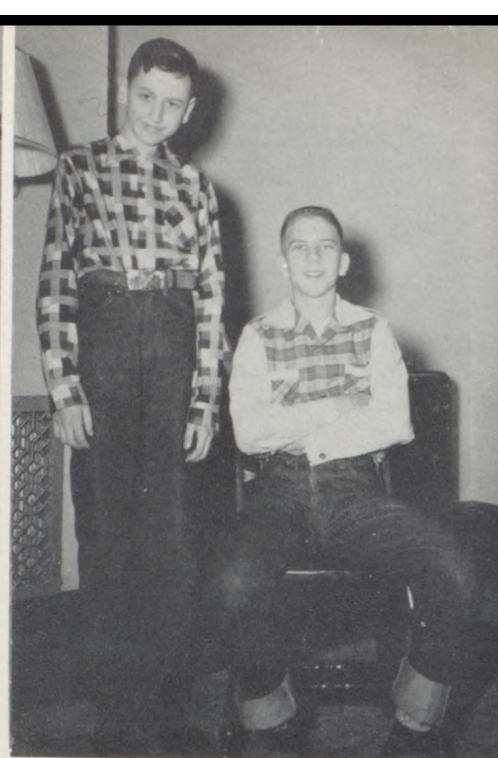




Most Sophisticated Senior, Jolliest Junior



Best Girl And Boy Dancers  
D. Foster P. Leach  
S. Teasley B. Crawford



Greenest Freshman Silliest Sophomore  
L. Lehr J. Wendt



Laziest Student Peppiest Student  
P. Rachford S. Mogg  
Biggest Wisecracker Giggliest Giggler  
G. Howard S. Mogg

T  
A  
N  
K  
E  
L  
E  
C  
T  
I  
O  
N



Biggest Flirt Biggest Wolf  
S. Gover S. Griffin  
Teacher's Pet Craziest Mixed-Up Kid  
J. Davis B. Kirkendoll







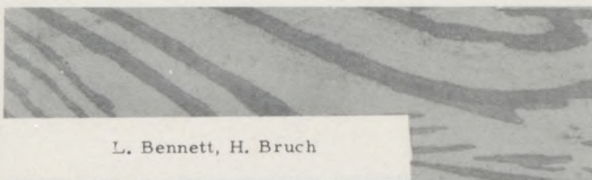
Seniors Most Likely To Succeed



Prettiest Girl L. Kemper  
Handsomest Boy R. Filley



Most Courteous  
B. Wells, B. Crawford



L. Bennett, H. Bruch



Couple Most Desperately In Love

G. Howard, R. Filley

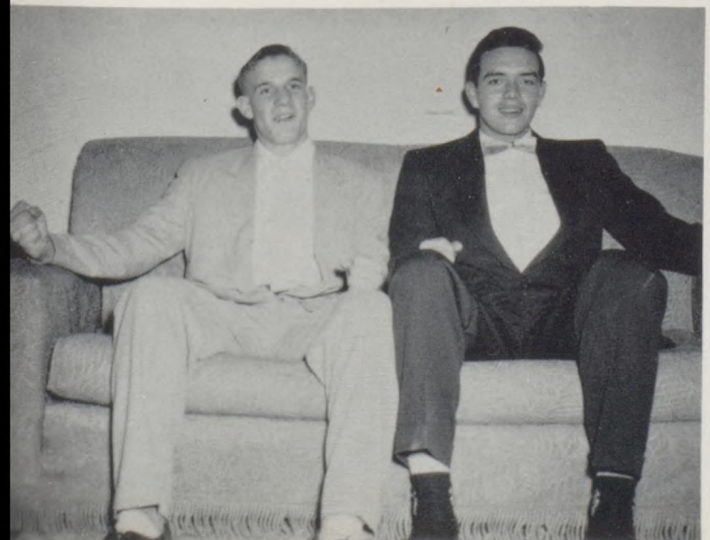


L. Burns, B. Wells



Friendliest  
G. Howard, E. Akey

M. McVicker, S. Mogg



Best Boy Pals



Best Girl Pals





## Masque and Gavel

- ROW I: D. Vanderau, H. Bruch, E. Akey, M. Bird, S. Mogg, G. Howard.  
 ROW II: M. Buck, L. Leutzinger, S. Hawkins, L. Collins, B. Wells, L. Kemper, J. Davis, A. Welch, R. Kirkendoll, H. Wilcox, D. Foster, E. Parks, S. Kimes, Y. Mayes, L. Wood, K. Kemper, S. Hill, T. Johnson, Y. Gover.  
 ROW III: Mrs. Overlay, B. Casper, S. Rauber, B. Short, S. Teasley, D. Bruch, H. Huntsberry, S. Althouse, F. O'Connor, A. McCabe, C. Long, K. Stoppelmoor, S. Gover, B. Crawford, J. Osborn.  
 ROW IV: J. Smith, B. Howard, T. Kinsella, C. Whitaker, D. McCool, G. Babb, L. Clawson, P. Doolen, L. Judson, L. Bennett.

V  
A  
R  
I  
E  
T  
Y

S  
H  
O  
W

"Why I Am A Bachelor"



"Sweet Georgia"

"Where Back Yards Meet"

"I Must Be In The Army"





V  
A  
R  
I  
E  
T  
Y

# Show Boat

S  
H  
O  
W

"PLAIN NONSENSE"



"FARMER'S DAUGHTER"



"DRY BONES"

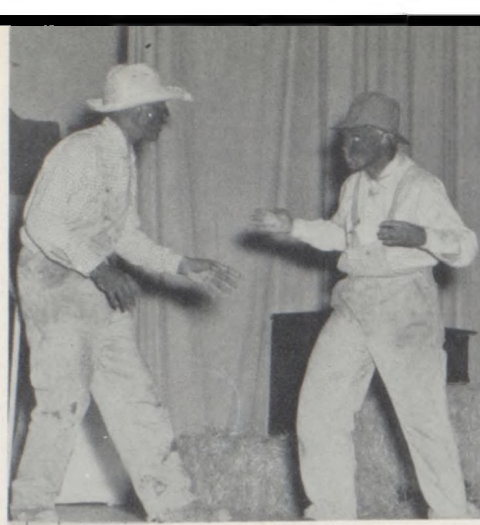


"MAKE BELIEVE"





"HOLLYWOOD BOUND"



"DON'T ARGUE"

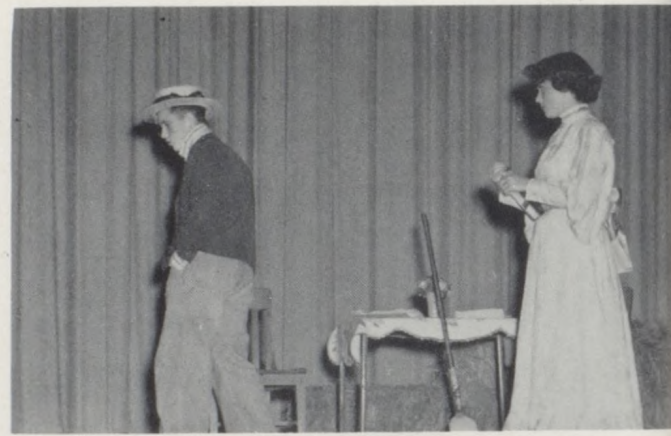


"BILL"

## Variety Show



"WHY I AM A BACHELOR"



"FARMER'S DAUGHTER"

"OLD MAN RIVER"

"AH STILL SUITS ME"

"CAN'T HELP LOVIN' DAT MAN"



# Contest Entries



JERI GAIL DAVIS  
Extemporaneous Speaking



LEE BENNETT  
Radio Speaking

MARION BIRD  
Prose Reading



BARBARA WELLS  
Prose Reading



# Contest Entries



LEWIS JUDSON  
Original Oration



LARRY COLLINS  
Original Oration



LYRLE CLAWSON  
Original Poetry

SHIRLEY HAWKINS  
Poetry Reading

DORCAS VANDER AU  
Poetry Reading





## Junior Play "A Lucky Penny"

Beverly Short, Dixie O'Day, Dorcas Vanderau, Dorothy Bruch, Sharon Gover, Linda Kemper, Clark Whiteaker, Susie Rauber, James Elsea, Sandra Teasley, Robert Kirkendoll, Warren Richard, Johnnie Cranor, Raymond Fore, Karen Kirkendoll, Larry Collins, Barbara Wells, Shirley Hawkins, Sandra Frost.

## Contest Play "High Window"



S. Mogg, L. Judson, M. McVicker, S. Hawkins, G. Howard



L. Clawson, J. Davis, A. McCabe



N. Richardson, E. Akey, E. Clark

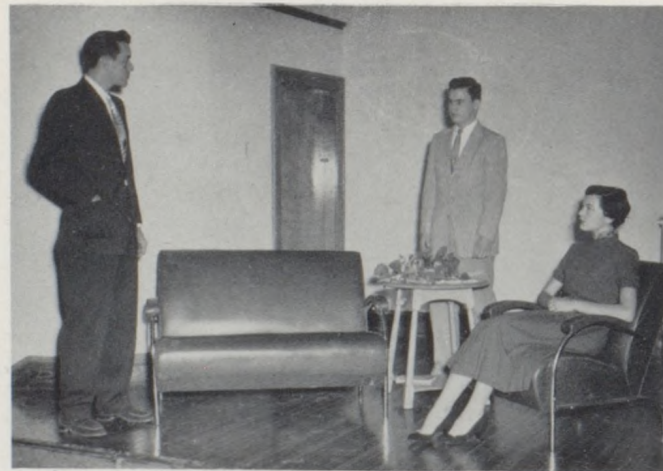


L. Bennett, S. Simpson

# Senior Play "Music in the Valley"



S. Mogg, F. O'Connor



R. Filley, L. Judson, M. McVicker

G. Howard, H. Bruch

D. Foster, B. Crawford

L. Burns, M. McVicker







SPORTS

# Dragonettes



ROW I: S. Hill, S. Mogg, M. McVicker, P. Doolen, L. Kemper, M. Buck.  
 ROW II: M. Elliot, M. Reed, Y. Gover, M. Waldren, B. Callaway, A. McClellan, B. Johnson,  
 S. Hawkins, J. Hale, T. Johnson, N. Nelson, K. Whiteaker.  
 ROW III: M. Leabo, Y. Edwards, J. Pulliam, D. DeFreece, D. Bruch, L. Clawson, J. Davis, L.  
 Leutzinger, S. Frost, S. Gover, F. O'Connor, Y. Mayes.  
 ROW IV: A. Welch, E. Akey, N. Robidoux, P. Long, K. Kemper, L. Wood, S. Kimes, S. Althouse,  
 I. Walker, B. Wells, S. Rauber, K. Stopplemoor.  
 ROW V: Mrs. Overlay, B. Short, D. Foster, B. Billings, D. Vanderau, S. Teasley, E. Connors,  
 D. O'Day, P. Leach, F. O'Connor.  
 ROW VI: H. Bruch, A. McCabe, K. Kirkendoll, P. Jones, M. Wallace, E. Parks, S. Kanan, Miss  
 Wilson.  
 ROW VII: B. Casper, J. Beavers, J. Baker, J. Smith.



## Planning a Pep Assembly

ROW I: S. Buck, S. Hill, M. McVicker, S. Mogg.  
 ROW II: Mrs. Overlay, P. Doolen, Miss Wilson,  
 L. Kemper.



LINDA KEMPER



MARGARET McVICKER



SHARYL MOGG

# Cheerleaders



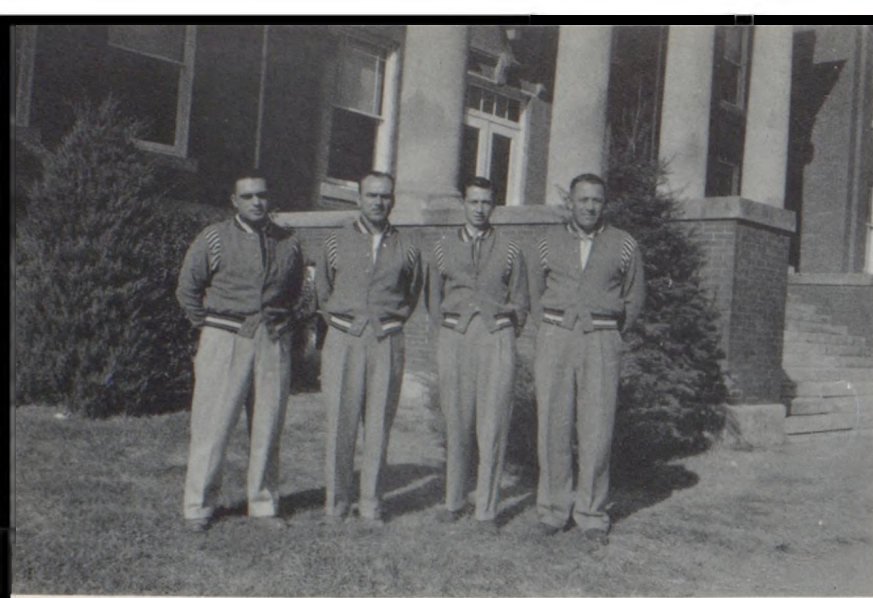
PAT DOOLEN



SUSIE BUCK



SUSIE HILL



COACHES

T. Lema, L. Jones, B. Gill, E. Baker

# Football

## 1954 FOOTBALL RECORDS

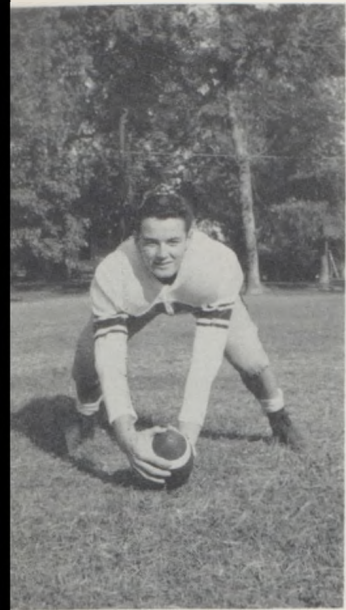
	They	We
Gower	32	7
Trenton	32	12
Lathrop	14	19
Park Hill	6	19
Chillicothe	6	0
Maryville	6	32
Savannah	7	9
Plattsburg	20	20
Tarkio	6	19
	<u>129</u>	<u>137</u>

# Football



- ROW I: Mr. Lema, Ron Filley, Gene Howard, Bill Crawford, George Wallace, Stan Griffin, Lyle Burns, Bill DeFreece, Duane Slates, Stacey Hutton, Sam Hiner, Ron King, Mr. Gill.
- ROW II: Mr. Baker, Gary Smith, Lee Bennett, Bob Riley, Errol Gann, Warren Richards, Jerry Zimmerman, Bob Berryhill, Ralph Stone, Charlie Hutton, Jim Sawyer, Jim Akey, Mr. Jones.
- ROW III: David O'Connor, Paul Coffman, John Funk, Tom Rooney, Tom Newell, Russell McVicker, Carl Long, Jerry Parrack, Mike Kennedy, Bob Moore, Tom Brown.
- ROW IV: Larry Newsom, Bill Swords, Dick Gilmore, Donald Neth, Alan Kimes, Jack Richardson, Clyde McVicker, Bob Kessler, Kitch Kirkendoll, Scotty McCord, Jerry Wendt.
- ROW V: Roy Sigman, Bill Lyons, Peter Rachford, Don O'Connor, David Utt, Bob Mudders, John Streu, Lowell King, Harold Sparks.

# Football



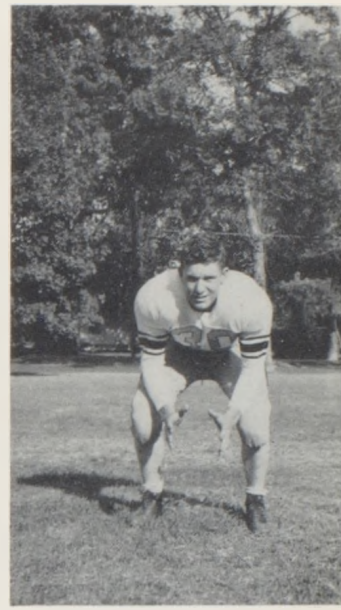
S. HINER - Center



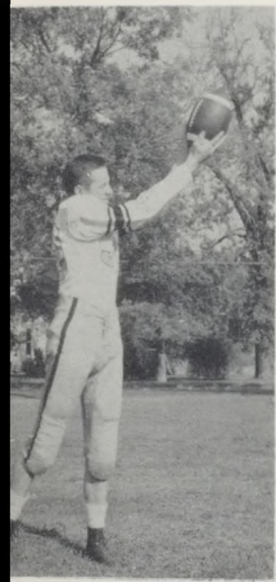
G. HOWARD - Back



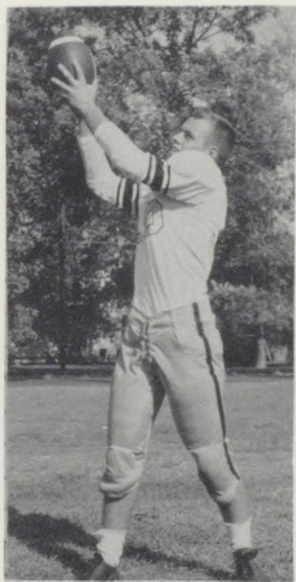
L. BURNS - Back



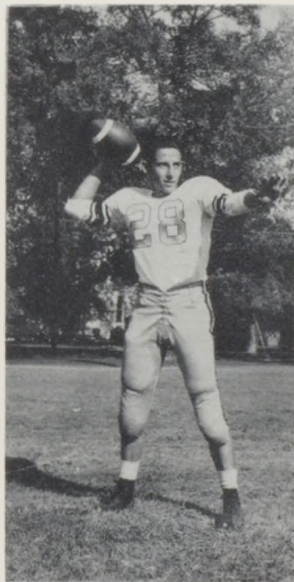
G. WALLACE - End



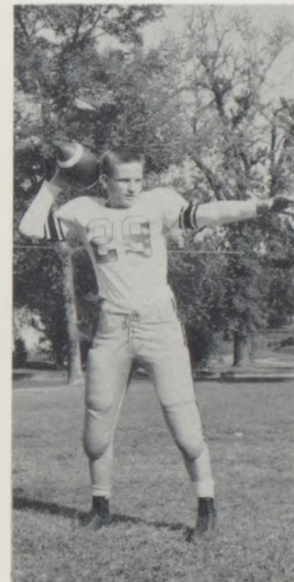
L. BENNETT - End



B. CRAWFORD - End



B. BERRYHILL - Back



R. STONE - Back



G. SMITH - Back

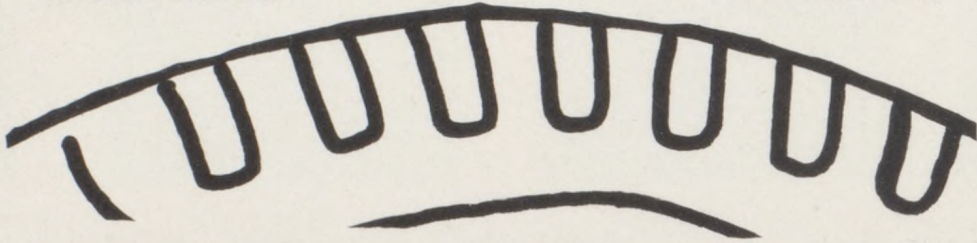
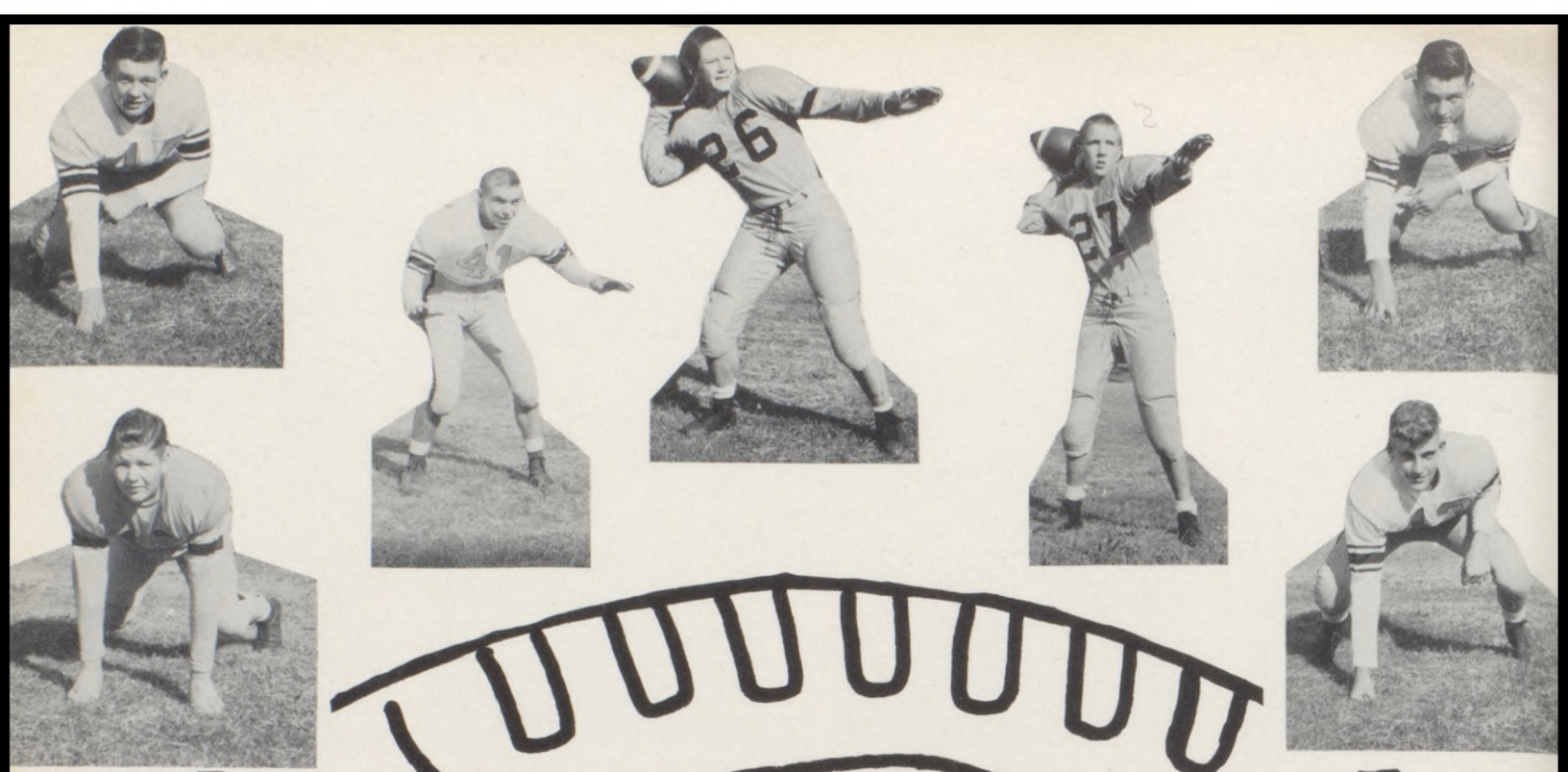
W. RICHARD - Guard

B. DeFREEGE - Guard

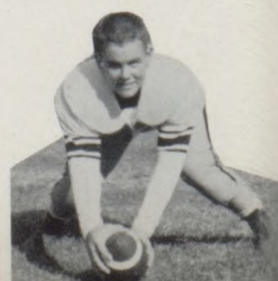
R. FILLEY - Tackle

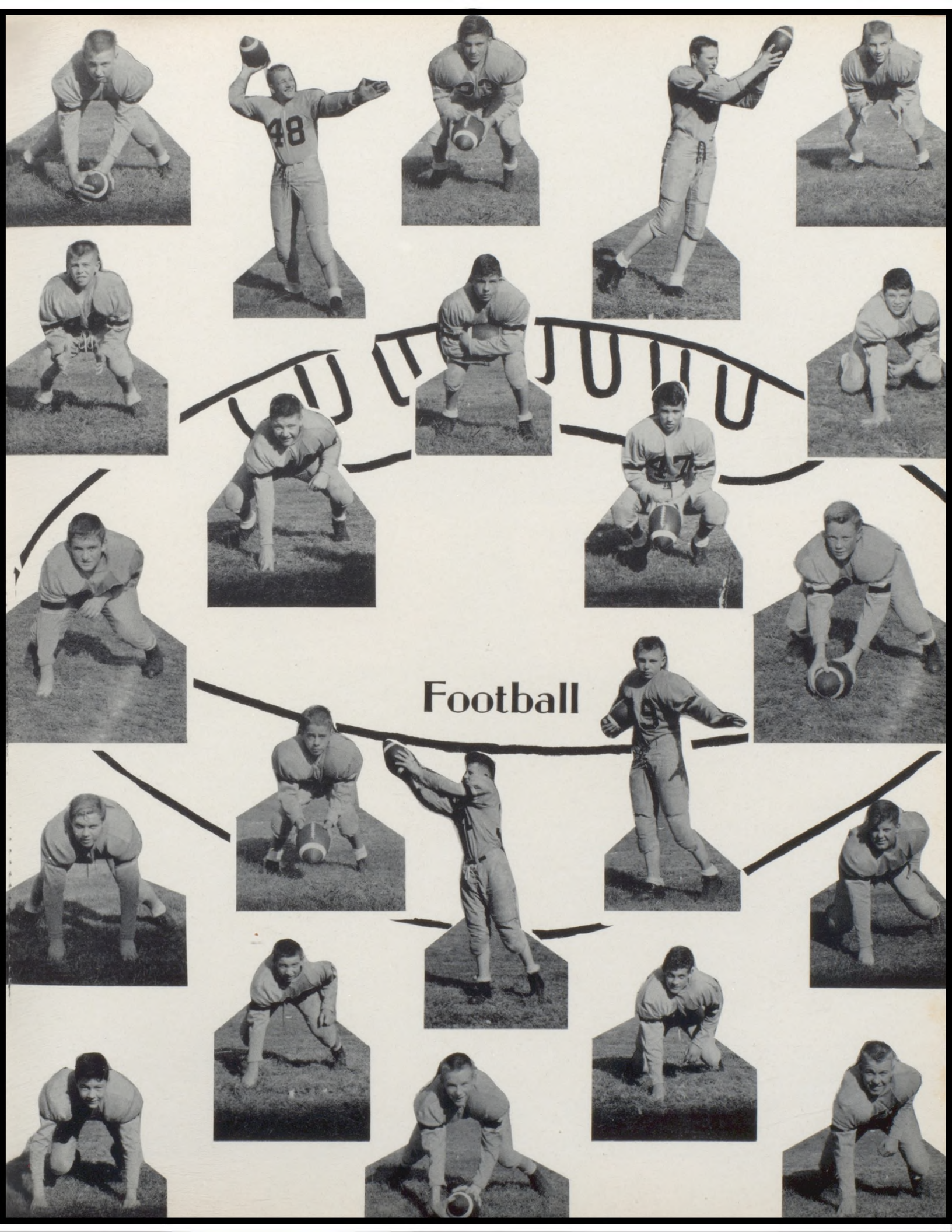
S. GRIFFIN - Tackle





# Football





Football

# 1954-55

## Basketball

### Schedule

SCHEDULED GAMES	THEY	WE
Central	66	38
Oregon	52	43
Chillicothe	51	59
Maryville	36	38
Lathrop	44	55
Tarkio	49	54
Rock Port	50	68
Mound City	53	45
Tarkio	48	57
Mound City	46	50
Maysville	49	66
Chillicothe	67	47
TOURNAMENT GAMES	THEY	WE
Trenton	53	51
Chillicothe	38	34
Spickard	55	61
Trenton	63	36



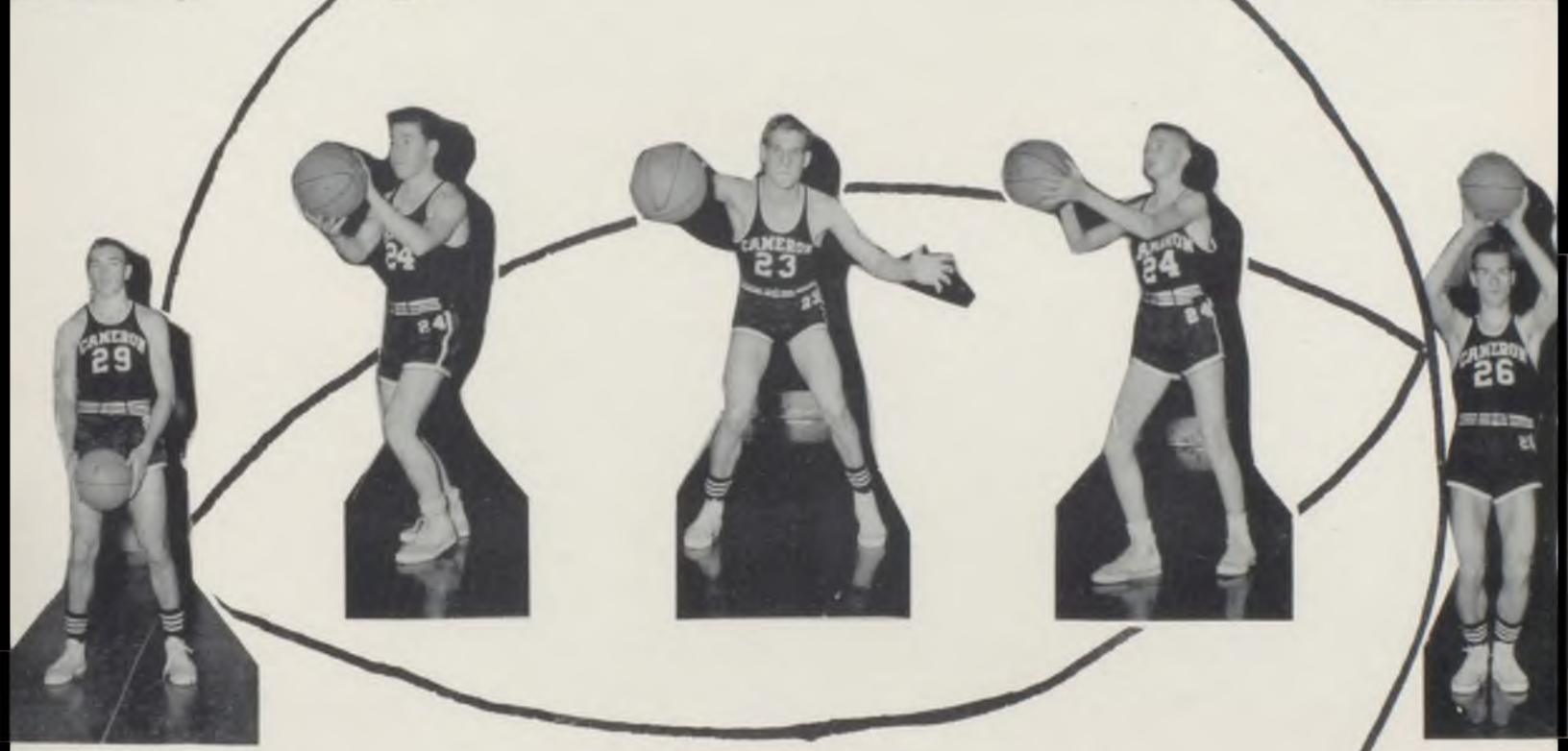
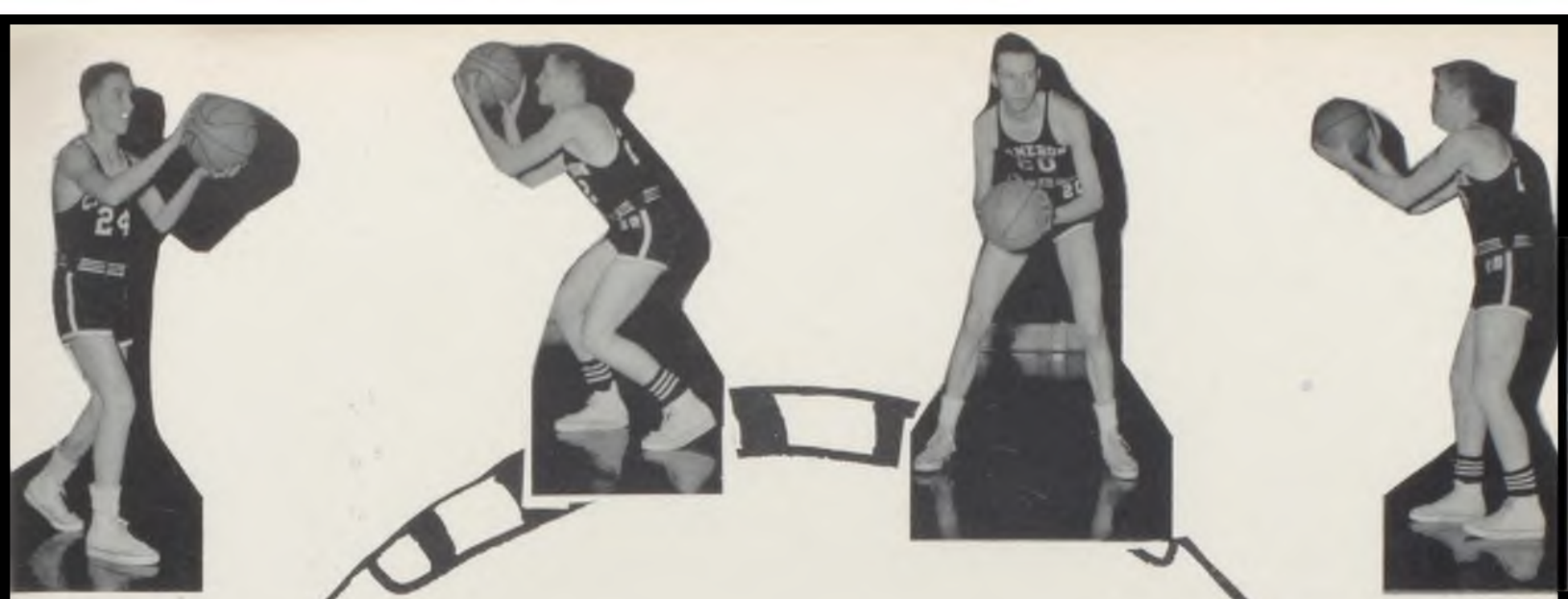
### Basketball

- ROW I: B. Crawford, G. Howard, B. Berryhill, R. Stone, J. Osborn, L. Bennett.  
 ROW II: Coach Gill, C. Long, R. King, G. Smith, G. Babb, W. Richards, D. Fore, C. Locke, Coach Lema.  
 ROW III: J. Wendt, C. P. O'Conner, E. Stade, S. McCord, B. Riley, S. Wages.

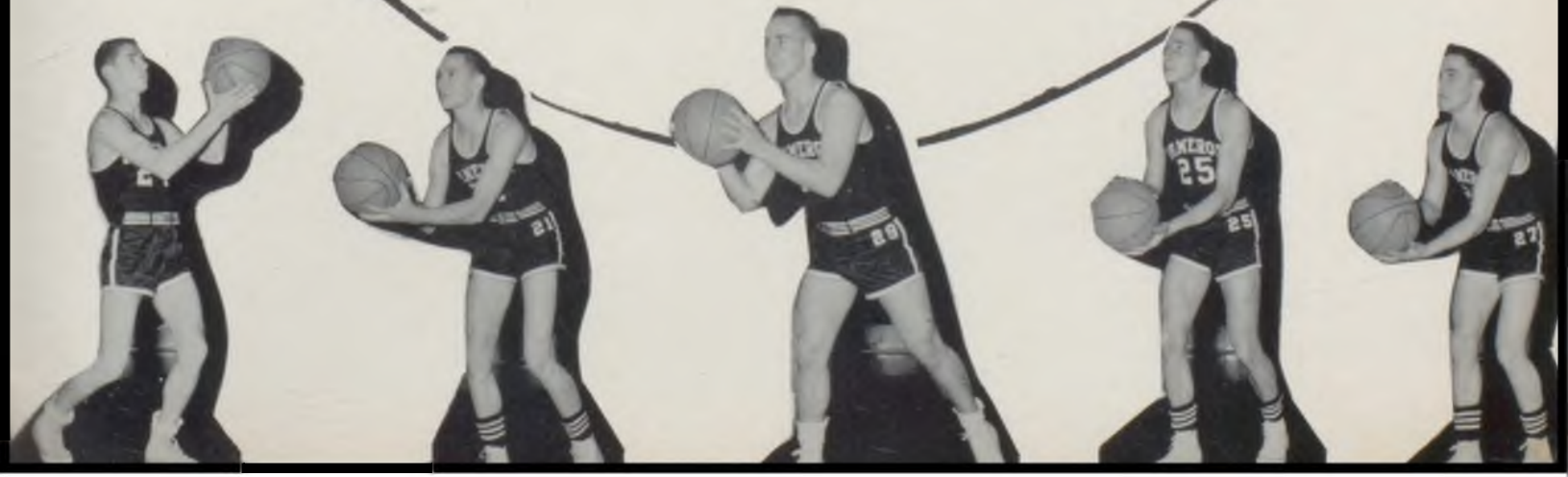


Coach Gill, G. Smith, J. Osborn, B. Crawford, L. Bennett, W. Richard, B. Berryhill, G. Howard, R. Stone, G. Babb, Coach Lema.





# Basketball



# Track



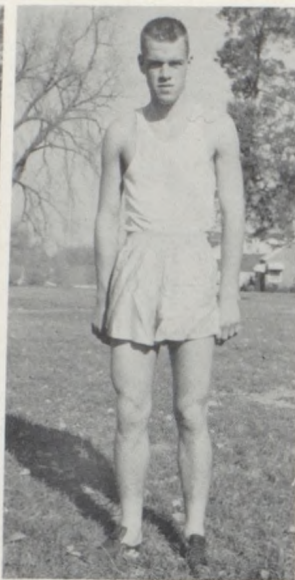
LEE BENNETT



GEORGE WALLACE



RON FILLEY



BILL CRAWFORD



STACEY HUTTON



BOB BERRYHILL



RALPH STONE



BOB RILEY



ERROL GANN

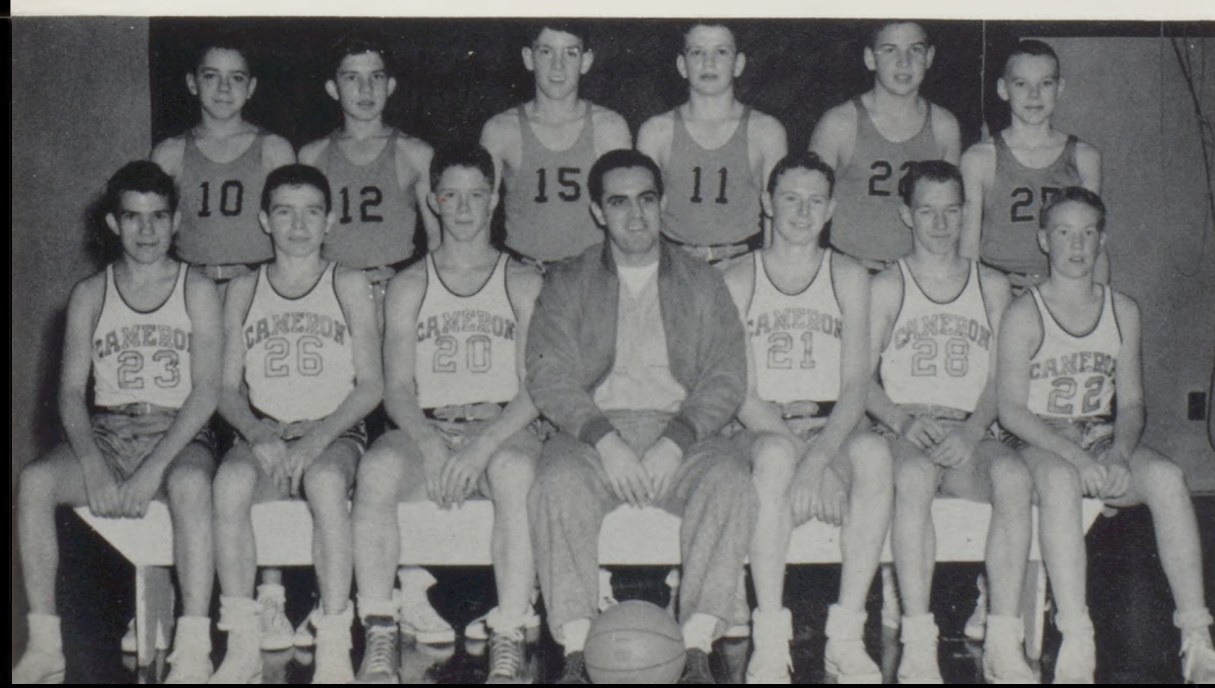
# Football



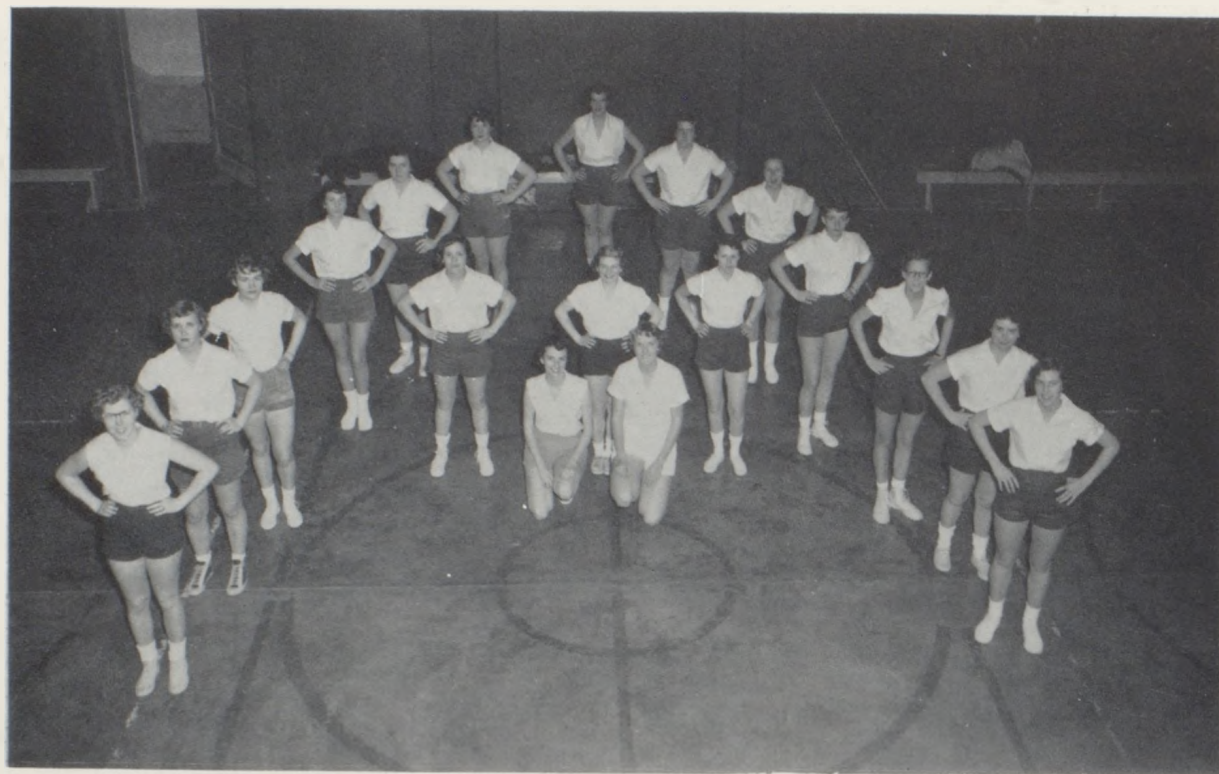
# C Club



# Freshman Basketball Team



# "A" Club

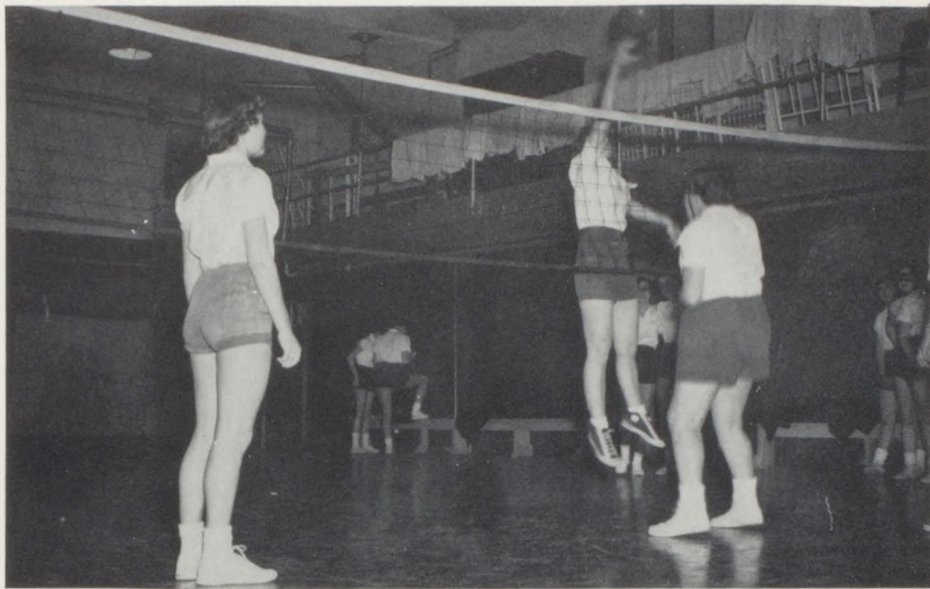


## "A" Club Members and Sponsors



## Basketball

# "A" Club



## Volleyball

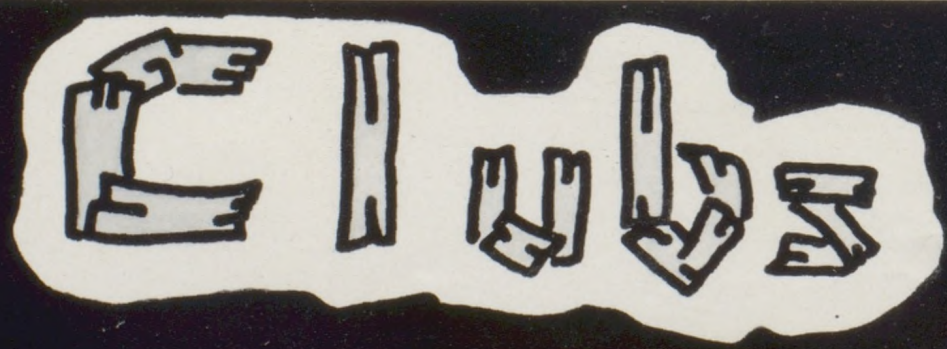
## Baseball



## Archery



*Delena Bowers*





President - - - - - A. Welch  
 Vice-President - - - - - H. Bruch  
 Secretary And Treasurer - - - - - D. Bruch  
 Student Council Representative - - - - - M. McColloch  
 Sergeant-At-Arms - - - - - B. Bloss

ROW I: H. Bruch, B. Parrack, A. Welch, J. Baker.  
 ROW II: J. Smith, N. Richardson, H. Hughes.  
 ROW III: D. Bruch, M. McColloch.  
 ROW IV: H. Thompson, J. Parrack, P. Rachford,  
 E. Floss.



H. Hughes, H. Bruch, D. White - working on papier-mache reindeer for Christmas Dance decorations.



A. Welch - Senior Art Student. She is taking time out for photography while working on a mural.



F.

H.

A.



ROW I: M. Elliot, E. Conners, J. Smith, C. Miller, E. Parks, B. Johnson, Y. Gover, T. Johnson.  
 ROW II: B. Casper, S. Mogg, M. McVicker, E. Elston, N. Roudioux, B. Kresse, M. Wallace, P. Leach, P. Jones, D. DeFreece, F. O'Connor.  
 ROW III: J. Smith, B. Howard, F. O'Connor, P. Dolan, H. Bruch, D. Bruch, S. Kanan, N. Burnett, M. Waldron, B. Gilmore, Miss Vandrell.

F.

H.

A.

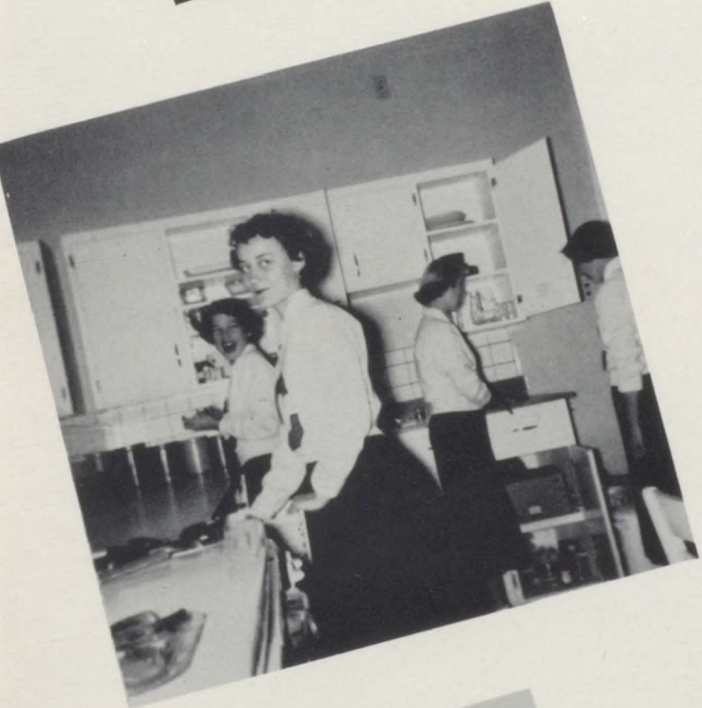
ROW I: J. Pulliam, E. Akey, J. Davis, M. McCulloch, K. Kemper.  
 ROW II: E. Connors, B. Callaway, J. Hale, Y. Mayes, M. Buck, N. Richardson, A. McClland, M. Leabo, K. Stopplemoor, I. Walker, Y. Gover, J. Beavers.  
 ROW III: N. Roudioux, M. O'Connor, S. Althouse, J. Plymell, V. Clampitt, B. Mattox, L. Wood, N. Silver, P. Long, B. Billings, M. Reed.



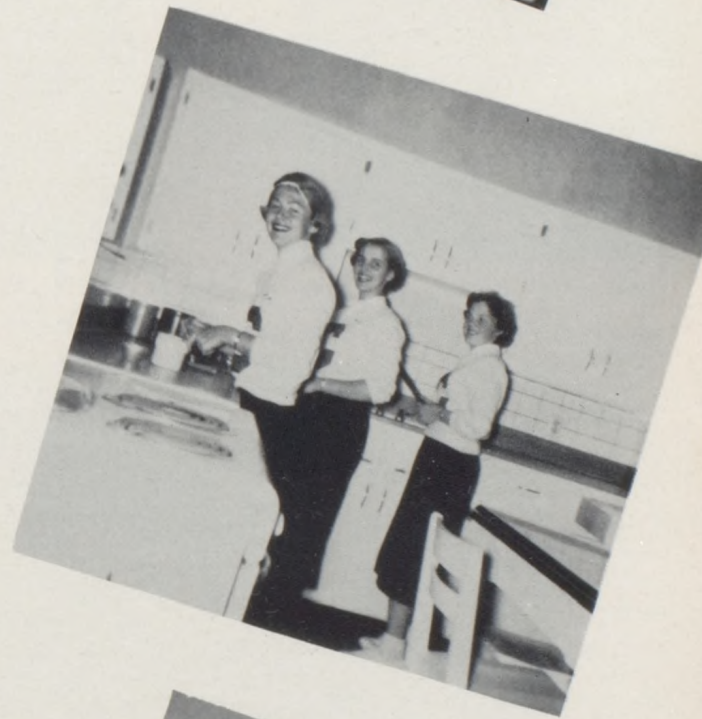




F.



H.



A.



**WALSWORTH**  
Lithographed & Bound by  
**WALSWORTH BROTHERS**  
Marceline, Mo., U. S. A.

# F. F. A.

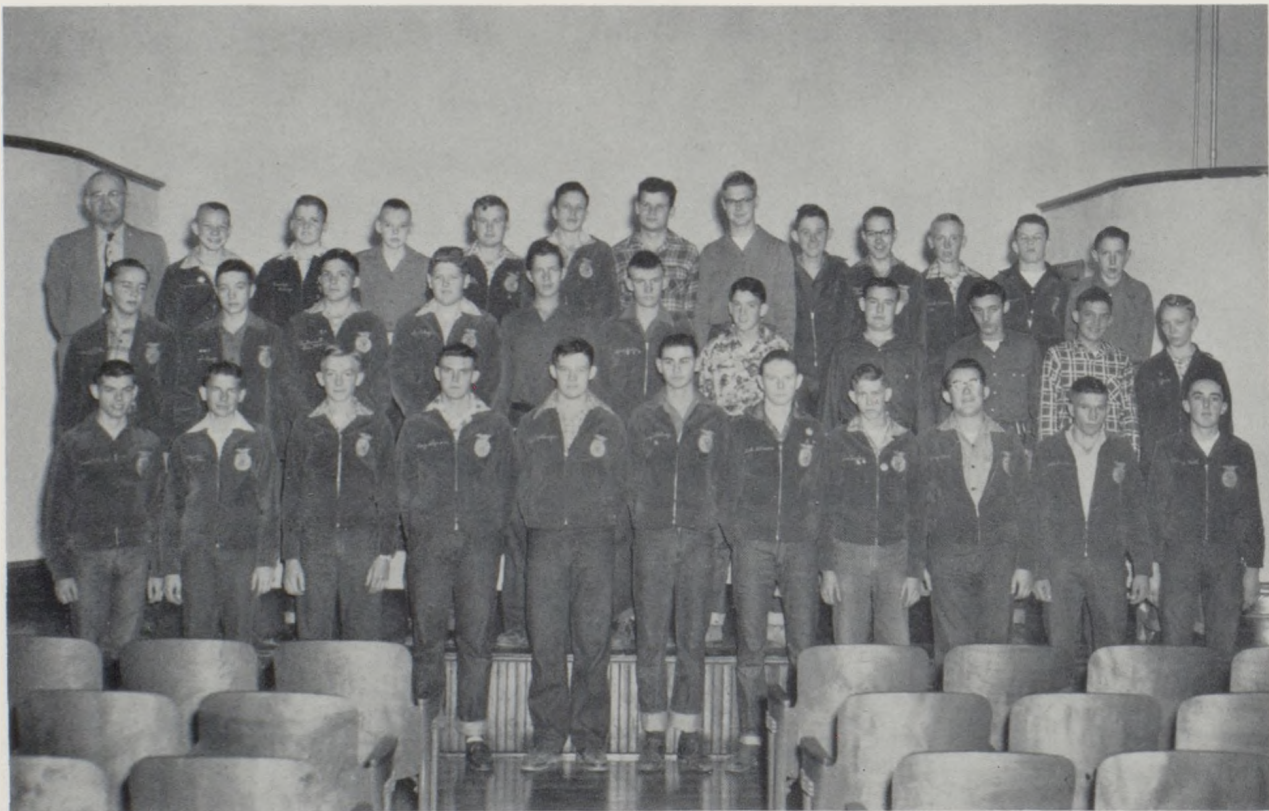
LEARNING TO DO  
DOING TO LEARN  
EARNING TO LIVE  
LIVING TO SERVE



## F.F.A. OFFICERS

ROW I: President - Lee Bennett, Vice-President - Jerry Botts,  
Sentinel - Alfred Hahn, Secretary - George Wallace.  
ROW II: Adviser - Charles Hill, Reporter - Jerry Zimmerman,  
Treasurer - Elmer Clark.

# F. F. A. Club



ROW I: H. Wilcox, C. Hutton, D. Fore, R. Sigman, J. Sawyer, K. Whitney, D. Gilmore, J. Taylor, J. Bird, D. Dains, J. Hart.  
ROW II: L. Puterbaugh, L. Bray, D. O'Connor, P. Coffman, J. Chase, A. Marlatt, R. Sloan, J. Dice, B. Lloyd, D. Utt, L. Offutt.  
ROW III: Sponsor Charles Hill, E. Watson, T. Rooney, K. Osborn, D. White, D. O'Connor, C. Adams, K. Bolen, B. Swords, C. Hartford, D. Diven, D. O'Connor, J. Brennan.



DRUM ENSEMBLE



TRAP DRUMMER



FRENCH HORN QUARTETTE



FLUTE TRIO



MIXED CLARINET QUARTETTE



CLARINET QUARTETTE (A)



## Boys' Glee Club

ROW I: Miss Utt, R. Collins, D. Grove, D. White, C. O'Connor, J. Richardson.  
ROW II: E. Stade, E. Howard, J. Hart, T. Kinsella, H. Wilcox, D. O'Connor.



C.  
H.  
S.

TROMBONE  
QUARTETTE

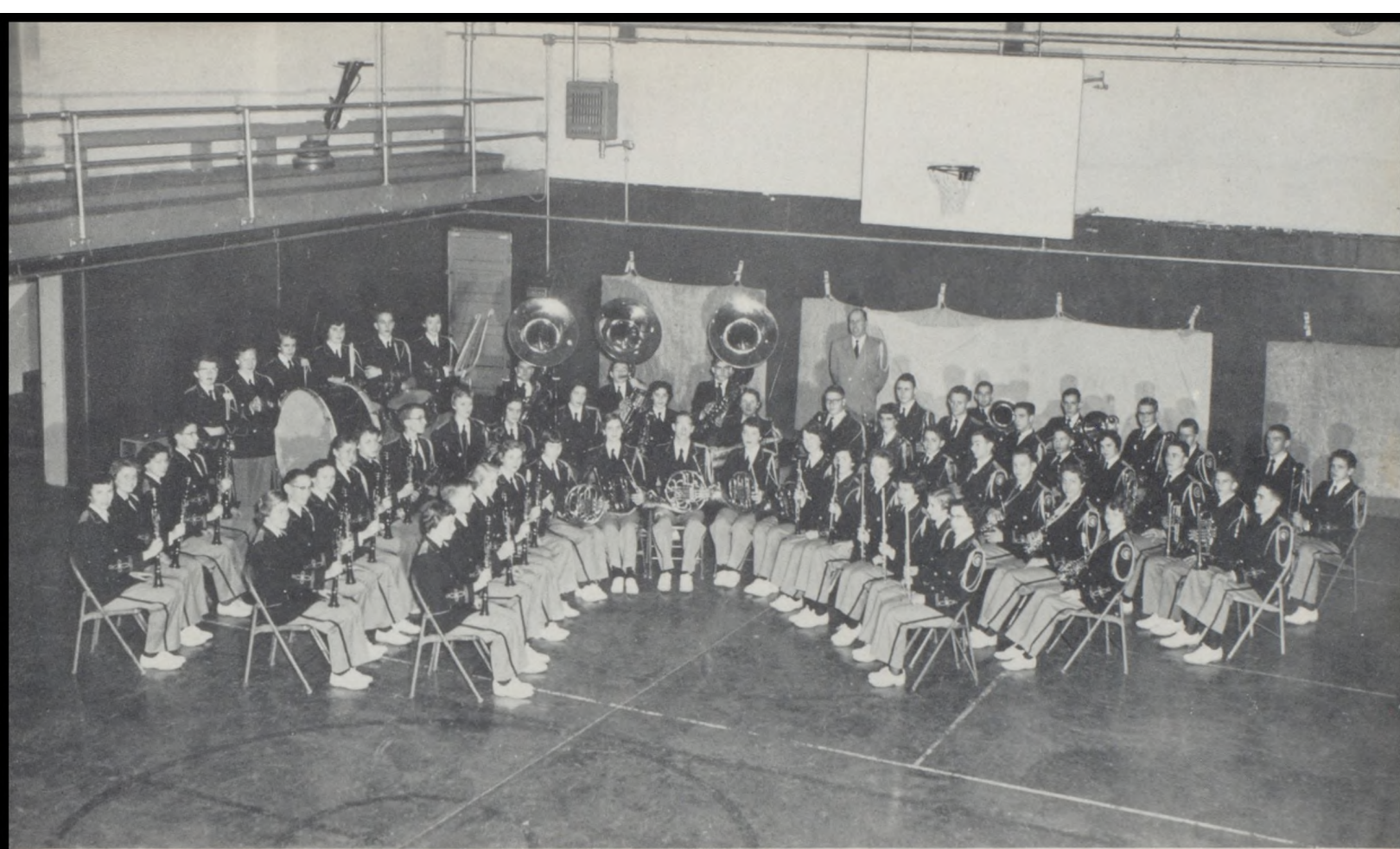


SOLO PERFORMERS

B  
A  
N  
D

SAXOPHONE  
QUARTETTE





## Concert Band

**FLUTES**  
Susie Hill  
Jeri Gail Davis  
Kay Kemper

**OBOES**  
Thelma Johnson  
Karen Kirkendoll

**CLARINETS**  
Linda Wood  
Nancy Silver  
Don Fore  
Dorothy Bruch  
Sue Althouse  
Jeanne Beavers  
Elizabeth Conners  
Pat Doolen  
Anita McClellan  
Pat Jones  
Alfred Campbell  
Michelle Brown

**BARITONE SAXOPHONE**  
Linda Kemper

**FRENCH HORNS**  
Dorcas Vanderau  
Saundra Teasley  
Howard Huntsberry  
Jamie Elsea  
Beverly Johnson  
Marilyn Reed

**CORNETS**  
John Hart  
Kitch Kirkendoll  
Imogene Walker  
Bob Riley  
Jack Osborn  
Jerry Wendt  
John Cranor  
Larry Newsom  
Terry Kinsella

**ALTO CLARINETS**  
Raymond Fore  
Sherry Wages

**BASS CLARINET**  
Alice McCabe

**BASSOON**  
Helen Bruch  
Mary Jane Wallace

**ALTO SAXOPHONES**  
Bernard Kirkendoll  
Sue Kimes  
Carl Long  
Marcia Rogers  
Lyrle Clawson  
Johnnie Streu

**TENOR SAXOPHONE**  
Suzie Rauber  
Pete Rachford  
Carolyn Miller

**TROMBONES**  
Keith Bolen  
Denny O'Connor  
Errol Gann  
Alan Kimes

**BASSES**  
Stacey Hutton  
Jack Richardson  
Charlie Johnson

**DRUMS**  
Janeen Smith  
Barbara Callaway  
Scotty McCord  
Nanette Robidoux  
Betty Casper

**TYMPANI**  
Beverly Billings

**BARITONES**  
Ronnie Collins  
Larry Collins

MIXED WOOD WIND QUINTETTE

CORNET SECTION

CLARINET QUARTETTE (B)



# Girls' Glee Club



ROW I: Miss Utt, M. Buck, M. Elliot, S. Hawkins, Y. Gover, A. Welch, J. Davis, K. Kemper, B. Wells, D. Vanderau, N. Silver, C. Miller, S. Hill.  
 ROW II: B. Johnson, L. Wood, E. Parks, B. Parrack, S. Frost, L. Kemper, S. Teasley, M. McVicker, S. Mogg, S. Gover, A. Hinds, S. Kimes.  
 ROW III: E. Elston, M. Leabo, S. Althouse, B. Short, A. McCellan, D. Bruch, M. Brown, M. Reed, B. Callaway, B. Billings, M. Wallace.  
 ROW IV: I. Walker, E. Connors, J. Smith, B. Howard, P. Doolin, S. Kanan, F. O'Connor, H. Bruch, P. Billings, K. Kirkendoll.

## A Cappella Choir

ROW I: Miss Utt, J. Davis, M. Elliot, Y. Gover, S. Hawkins, A. Welch, M. Buck, B. Groves, D. White, W. Richards, B. Crawford, J. Osborn, R. Collins, S. Gover, D. Vanderau, N. Silver, C. Miller, K. Kemper, S. Hill.  
 ROW II: E. Elston, L. Wood, E. Parks, B. Short, L. Judson, S. Griffin, C. Locke, L. Burns, B. Berryhill, L. Kemper, N. Robidoux, M. McVicker, S. Mogg, S. Kimes, M. Brown.  
 ROW III: S. Althouse, E. Connors, M. Leabo, B. Johnson, L. Collins, S. Hutton, D. Slates, S. Hiner, H. Bruch, P. Billings, J. Beavers, B. Wells.  
 ROW IV: E. Parks, S. Rooney, S. Frost, F. O'Connor, B. Parrack, B. Howard, P. Doolen, S. Kanan, K. Whiteaker, D. Bruch, S. Teasley, B. Billings, B. Callaway, A. Hinds, M. Reed.



## A Cappella Choir

V  
O  
C  
A  
L  
  
M  
U  
S  
I  
C



GIRLS' TRIO  
B. Wells, D. Bruch, A. Welch



BOYS' QUARTETTE  
S. Hutton, L. Judson, L. Burns, G. Howard



CHOIR OFFICERS

J. Osborn, Vice-President; H. Bruch, Student Council Representative; A. Welch, President; B. Wells, L. Burns, Secretary-Treasurer.

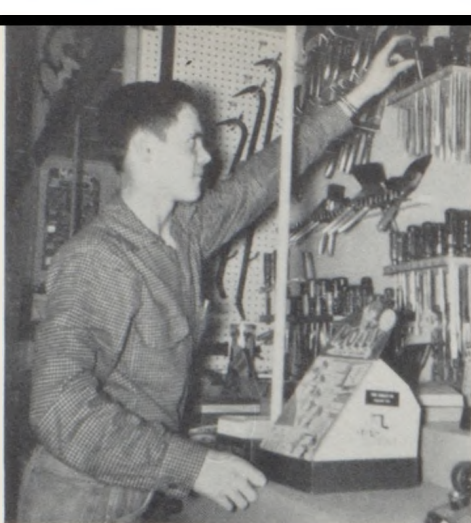
GIRLS' SEXTETTE  
S. Hill, B. Billings, K. Kemper, S. Frost, E. Parks, S. Hawkins

GIRLS' QUARTETTE  
H. Bruch, D. Vanderau, L. Kemper, A. Welch.





Marion Bird  
Office Work  
Hetro Gas Company



Tommy Potts  
Hardware Retail  
Connell Hardware



Gary Lister  
Projectionist  
Silver Theater

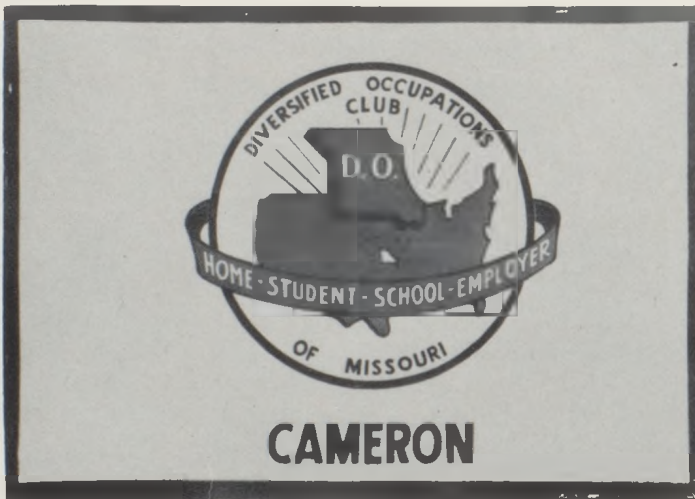


Charlie Johnson  
President

"WE LEARN BY DOING"



Pat  
Wiedmaier  
Sec.-Treas.



Tommy Potts  
Vice-President



Conley Adams  
Reporter



Elbert Fry  
Sergeant-  
At-Arms



Marion Bird  
Student Council Representative

Conley Adams  
Sheet Metal  
C. A. Parr Company

Louis G. Clark  
Co-ordinator

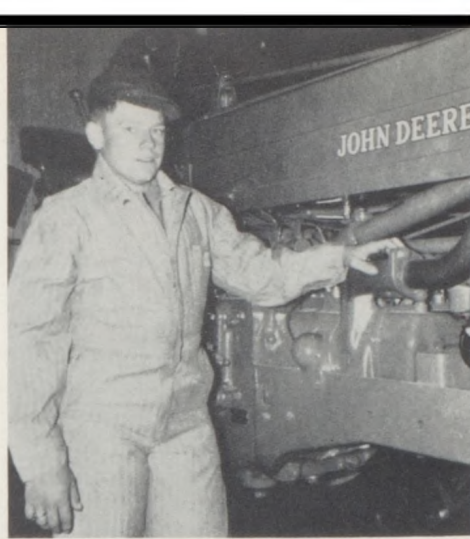
Charlie Johnson  
Service Station Attendant  
Richardson's Skelly Service







Nancy Burnett  
Food Service  
Red X Grill



Robert Kirkendoll  
Farm Machinery Mechanic  
Cooper-Seifert Implement Company



Donna Foster  
Doctor's Assistant  
Kimes And Wilbur Clinic



Kenny Robinson  
Service Station Attendant  
Clevenger Standard Service



Elbert Fry  
Meat Cutting  
Green Hills Market

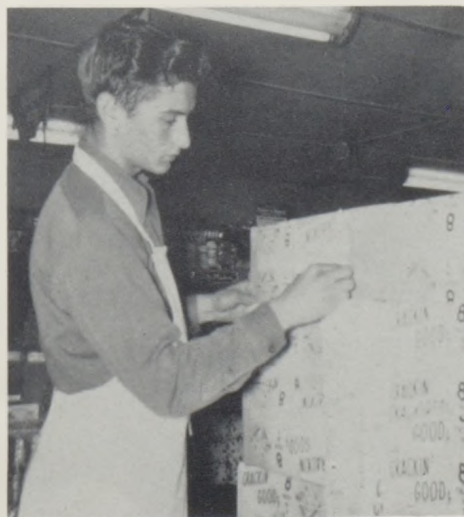


Donald Laughlin  
Grocery Retail  
Green Hills Market

Pat Wiedmaier  
Drug Store Retailer  
Skidmore Drugs



LeRoy Waldron  
Grocery Retail  
Drive-In Market



Harlene Hughes  
Doctor's Assistant  
Kimes And Wilbur Clinic

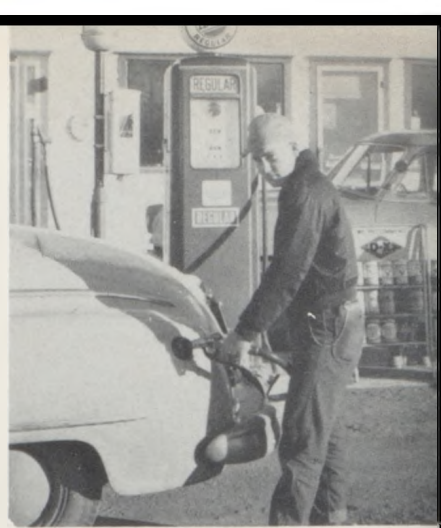




Donald Peters  
Cleaning And Pressing  
Nu-Way Cleaners



Bill Lewis  
Florist  
Cameron Greenhouse



Carrol Peters  
Service Station Attendant  
Dix Crossroads Service



Clark Whiteaker  
Service Station Attendant  
Griffin's Mobilgas Service



Glen O'Dell  
Grocery Retail  
Green Hills Market



J. D. Hahn  
Storage Plant  
Hetro Gas Company

David Graham  
Grocery Retail  
Drive-In Market



John Stinson  
Auto Body Repair  
Clark's Body Shop



Norman Burnett  
Service Station Attendant  
South Red X Motors





E. Fore, F. Morgan, T. Dunn, H. Hackett, B. Bird, G. Benson, C. Peters, O. Whitaker, M. McCoy



MR. CURTIS, MR. SIMPSON

"Light Competition"



Lyrle Clawson, Margaret McVicker, Alice McCabe, Gene Howard, Sharyl Mogg, Lewis Judson, Lyle Burns, Shirley Hawkins.

CAFETERIA



OFFICE





Junior - Cleo Frazier

# 1954 Homecoming Parade

Art Class And F.F.A. Floats



D. O. Class



D. O. Club Parade Car

Decorating The Christmas Tree



New Students: L. Morgan, J. Hale, C. Frazier, M. Rosson, L. Dennis, M. Brown.



# Autographs

