

The Publications Class

Presents



Mystic Memories

1961

Cameron High School

Cameron, Missouri



School Song

High School, high school, we love thee well;
Ours is the joy, thy praise to swell
With voices free, we'll sing of thee
And ever thy praise, we'll tell.

Mystic Editors

Cameron, Missouri

1961

Being editor of the Mystic has been one of my most outstanding high school experiences. It is my hope that this Mystic will bring back many treasured memories now and in the Years to come. To Mrs. Dritch and the publications class, I wish to express my sincere appreciation for their help in publishing this year's annual.

Diane Morriss

The Mystic staff sincerely hopes that in years to come, as you look through your 1961 Mystic, you will have many happy memories of your high school days. We also hope that this yearbook will be as enjoyable in years to come as it is now.

It was a great honor for me to be elected co-editor of this year's Mystic. I have sincerely enjoyed working with Mrs. Dritch and the publications class in collecting a few memories for you. I hope that in future years you will enjoy looking back on the many highlights pictured in our annual and will remember with pleasure your 1960-'61 year.

Carole Jean Wendt



Personnel
1 - 38



Features
39 - 48



Table of Contents



Activities
49 - 64

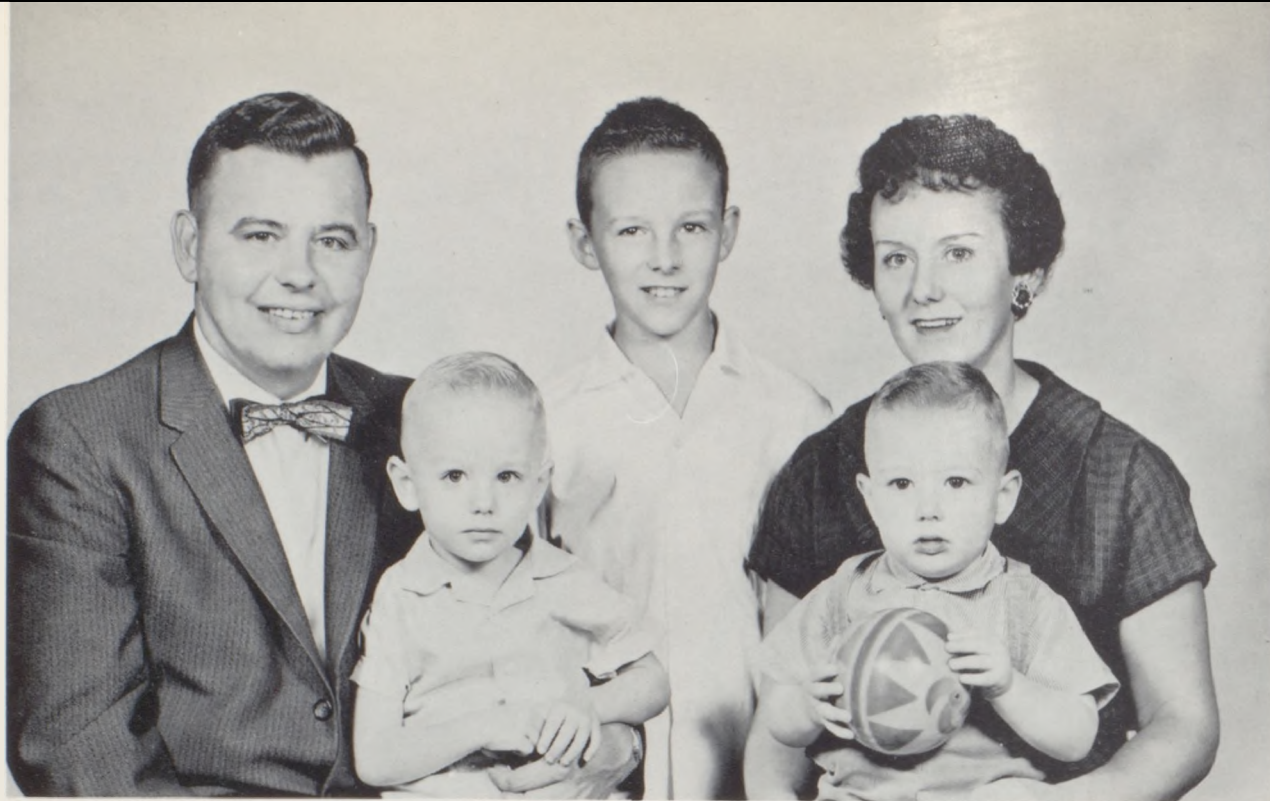


Sports
65 - 80



Personnel





Superintendent of Schools

Superintendent Ray Nelson, and his wife Beverly, and sons, Mike, Danny, and Ronnie.



Board of Education

ROW ONE: F. Wages, W. Sharp, K. Curtis, P. Bray, E. Watson, H. Ecton. ROW TWO: N. Denny, Superintendent R. Nelson, C. Groom.



High School Principal

Principal Frank A. Leet, and his wife Mary Ann, and sons, Randall Stuart and Gregory Scott.



Assembling the 1961 Mystic



MR. DONALD W. CLINE
World History
Citizenship



RAYMOND COLDREN, JR.
Mathematics
Assistant Coach

C
A
M
E
R
O
N



Building better citizens



Applying geometry



Assembling the tank



Artists of tomorrow



MRS. MICHAEL DRITCH
Publications
English



MRS. RAY EVERETT
Art



MR. DUANE FREEMAN
Driver Training
Physical Education
Football



MRS. WILLIAM GARLOCK
Library
Spanish

F
A
C
U
L
T
Y



Football builders



Doorway to knowledge



Learning about our country



Being useful



MR. CHARLES GILBERT
Social Studies



MR. ROBERT GILL
Athletics
Industrial Arts



MR. DAVID GOODWIN
Choral Music



MR. CHARLES W. HILL
Vocational Agriculture

C
A
M
E
R
O
R
N



Vocal group practicing



Our Future Farmers



English made enjoyable



Learning to sew



MRS. CURTIS HOLLAND
English
Dramatics



MISS LOVELL HUNZIGER
Vocational Home Economics



MR. OWEN McINTYRE
Science



MRS. KENNETH MITCHELL
Business Education

F
A
C
U
L
T
Y



Preparing for the scientific age



Being practical



Appreciating music



Learning basic mathematics



MR. THOMAS PRICE
Instrumental Music



MR. JACK SARRIS
General Mathematics
General Science
Assistant Coach



MRS. CLAYTON SNYDER
Physical Education



Building physical fitness



CELESTE MORRISS
Secretary to Principal



DEL LUCE
Secretary to Superintendent





WE WILL REMEMBER

The feeling of pride when the Dragons made a good showing
Suspense hanging in the air on election day
Being one of the sea of faces in the crowd at a school gathering
"Happy birthdays" in the cafeteria
Thrill of watching the coronation at Homecoming
Singing the School Song at our assemblies
Gathering in the hall before the bell
Feeling the excitement in the air at the Snake Dance
Slaving and planning for the junior play
 and pride in the finished production
School spirit during pep assemblies
Enchantment of the Junior-Senior Prom
The sadness that pervades the air as we marched down the aisle to
 "Pomp and Circumstance."



JANE BEAVERS

- Viscountess 1
- Cheerleader 3,4
- Homecoming Attendant 3
- F.H.A. 2,3,4
- F.H.A. Officer 3,4
- Student Council 3,4
- "A" Club 2,3,4
- Masque and Gavel 2,3,4
- Tank Elections 3
- Dragonettes 1,2,3,4



STANLEY BRAY

- F.F.A. 1,2,3,4
- F.F.A. President 4
- F.F.A. Secretary 3
- F.F.A. Contest 3,4
- Typing 4
- Mathematics 1,4
- English 1,2,3,4
- General Shop 2
- Art 1



KENNETH BRIDGEMAN

- F.F.A. 1,2,3,4
- Football 2,3,4
- Track 2,3,4
- "C" Club 3,4
- Junior Play 3
- Art I 2
- Shop 3,4
- Mechanical Drawing 4
- Typing 4

HUGH BROWN

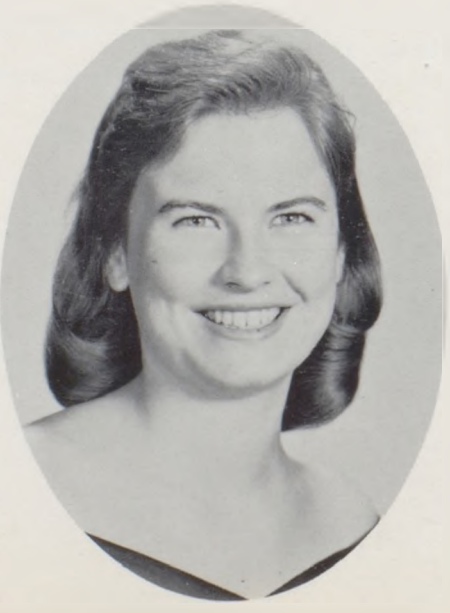
- Art Club 3
- Art 2,3
- Mechanical Drawing 3
- Driver Training 4
- Typing 4
- Bookkeeping 4
- Sociology 4
- Drama 4

CORALIE CARSON

- Band 1,2,3,4
- Band Secretary 3
- Student Council 4
- Dragonettes 1,2,3,4
- Dragonette Secretary 3
- Dragonette President 4
- Masque and Gavel 2,3,4
- Junior Play 3
- "A" Club 1,2,3
- National Honor Society 3,4

RAYMOND CATHEY

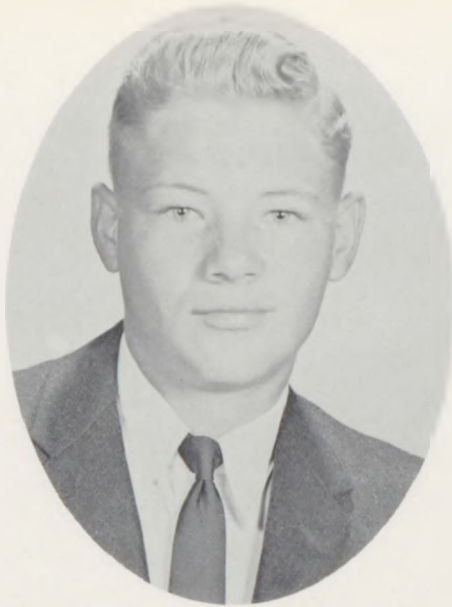
- Band 1,2,3,4
- Shop 1,2,3
- F.F.A. 2
- Typing 4
- Football 1
- Publications 4
- Speech 4
- Music Contest 2,3





SERITA CLAWSON

- Student Council 2,4
- Majorette 3,4
- Masque and Gavel 2,3,4
- "A" Club 2,3,4
- "A" Club President 3
- National Honor Society 3,4
- Art Club 2,3,4
- Junior Play 3
- Dragonettes 1,2,3,4
- G.R.C. Band 4



DONALD COFFMAN

- Football 1,2,3,4
- Track 1,2,3
- "C" Club 3,4
- Junior Play 3
- State Music Contest 2,3
- Agriculture Vice-President 4
- Mixed Chorus President 4
- District Music Contest 1,2,3,4
- Student Council 3
- Agriculture 1,2,3,4



GARY COOPER

- National Honor Society 3,4
- N.H.S. President 4
- Student Council 4
- F.F.A. 1,2,3
- F.F.A. Vice-President 3
- Football 2,3,4
- Basketball 1,2
- Track 1,2,3,4
- "C" Club 3,4
- Junior Play 3

CAROLYN CURRELL

- Band 1,2,3,4
- Masque and Gavel 2,3,4
- F.H.A. 1,2,3,4
- F.H.A. Treasurer 3
- F.H.A. President 4
- Dragonettes 1,2,3,4
- Girls' Glee Club 3
- Mixed Chorus 3
- Junior Play 3
- State Music Contest 1,2,3

O. C. (HUCK) DAVIS

- Shop 1,2,3,4
- Football 2,3
- Track 2,3
- Art 2,3
- Art Club 3
- Speech and Drama 4
- Junior Play 3
- Football Manager 1

MARCIA ANNETTE ESTEP

- Dragonettes 1,2,3,4
- Dragonette Secretary 4
- National Honor Society 3,4
- N.H.S. Secretary 4
- Masque and Gavel 3,4
- Junior Play 3
- Sophomore Pilgrimage 2
- English 1,2,3,4
- Girls' Glee 2
- Speech and Drama 4





MARY BETH FARNAN

- "A" Club 1
- F.H.A. 3,4
- Dragonettes 2,3,4
- National Honor Society 3,4
- Girls' Glee 1,3,4
- Mixed Chorus 2,4
- Junior Play 3
- Publications 4
- Shorthand District Contest 3
- District State Bookkeeping Contest 3



COLEEN FEIGHTERT

- Masque and Gavel 3,4
- Dragonettes 1,2,4
- Girls' Glee 2,3
- Mixed Chorus 2,3
- "A" Club 4
- F.H.A. 4
- Junior Play 3
- Speech and Drama 4
- Sophomore Assembly 2
- Home Economics 1,2,4



BONNIE JUNE FICK

- Masque and Gavel 3,4
- Dragonettes 1,2,3,4
- Band 1,2,3,4
- State Music Contest 1,2,3
- State Band Clinic 4
- Junior Play 3
- Home Economics 1,2
- Clarinet Quartet 1,2,3,4
- Typing 3
- Speech and Drama 4

GARY FOLAND

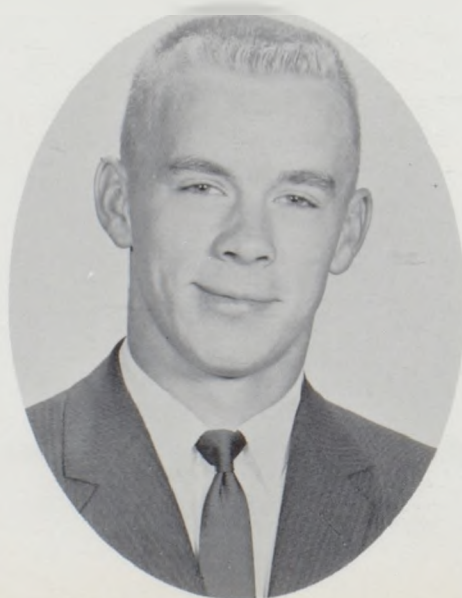
- Track 1,2,3,4
- Football 1,2,3,4
- Basketball 1,2,3,4
- Junior Play 3
- Basketball State Tournament 3
- "C" Club 3,4
- Class Treasurer 4
- Mathematics 1,2,3,4
- Science 1,2,3,4
- "C" Club Treasurer 4

DARRELL FORE

- Football 2,3,4
- "C" Club 3,4
- Driver Training 3
- Junior Play 3
- State Music Contest 1,2,3
- District Music Contest 1,2,3
- Track 1,2,3
- Mixed Chorus 1,2,3,4
- Mechanical Drawing 4

JANE FORE

- Student Council 4
- Girls' Glee President 3
- Dragonettes 1,2
- F.H.A. 4
- Masque and Gavel 3,4
- Junior Play 3
- State Music Contest 3
- Mixed Chorus 1,2,3,4
- Girls' Glee 1,2,3
- Sextet 1





JEAN FORE

- Dragonettes 1,2,3,4
- Masque and Gavel 3,4
- Girls' Glee 1,2,4
- Mixed Chorus 1,2,4
- National Honor Society 3,4
- Junior Play 3
- Sophomore Assembly 2
- Spanish 2,3
- District Contest 1,2,3
- State Contest 1



LINDA GATES

- Junior Play 3
- Girls' Glee 2,3
- Mixed Chorus 3,4
- F.H.A. 1,2,3,4
- Driver Training 2
- District Contest 3
- State Music Contest 2,3
- Speech 4
- Drama 4
- Let's Dance Program 2



BRITA GILCHRIST

- National Honor Society 3,4
- Dragonettes 1,2,3,4
- Pep Chairman 3,4
- Masque and Gavel 2,3,4
- Band 1,2,3,4
- Student Council 3,4
- Masque and Gavel Treasurer 3
- Masque and Gavel Secretary 4
- "A" Club 2,3,4
- Junior Play 3

DANNY GOODING

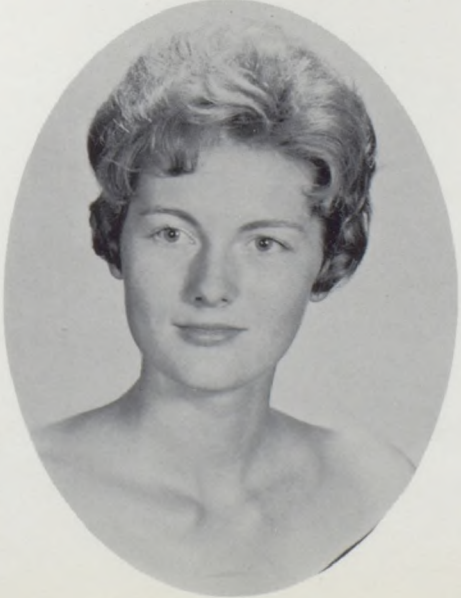
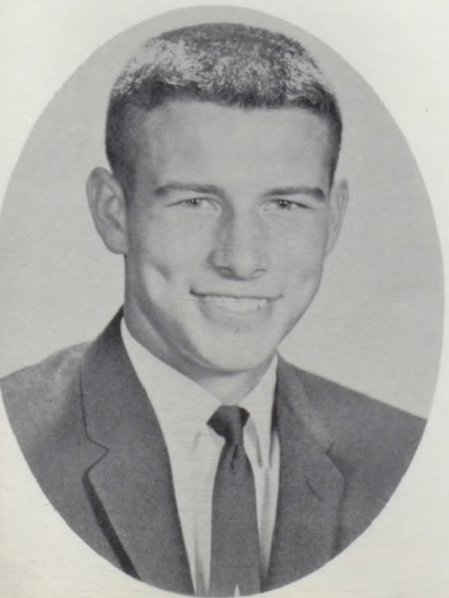
- Football 1,2,3,4
- Basketball 1,2,3,4
- Track 1,2,3,4
- Art Club 3
- "C" Club 3,4
- F.F.A. State Contest 3
- Agriculture 1,2,3
- Mechanical Drawing 4
- Junior Play 3
- General Shop 4

EILEEN GORDON

- National Honor Society 3,4
- Masque and Gavel 4
- Natilus Literary Society 3
- F.H.A. 4
- Speech and Drama 4
- Girls' Glee 1
- Girls' Choir 2
- F.T.A. 3
- Junior Play 3
- Publications 4

DAISY HAGERMAN

- "A" Club President 4
- "A" Club 2,3,4
- Art 2,4
- Art Club 2,3,4
- Speech and Drama 4
- Typing and Shorthand 3
- Secretarial Practice 4
- Junior Play 3
- P. E. 1,2,3,4





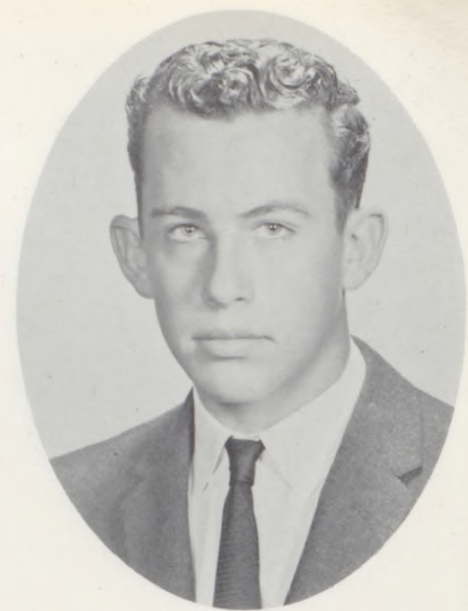
ALICE HAHN

Dragonettes 1,2,4
 Masque and Gavel 4
 Girls' Glee 2,3
 Mixed Chorus 2,3
 Music Contest 2
 "A" Club 4
 F.H.A. 1,2,3,4
 Junior Play 3
 Sophomore Assembly 2
 Speech and Drama 4



BLANCH HEDGES

Band 1,2,3,4
 Junior Play 3
 Dragonettes 1,2,4
 State Music Contest 1,2,3
 Girls' Glee 2,3,4
 Mixed Chorus 3
 Publications 4
 N.C.M.B.A. Band 3
 G.R.C. Band 4
 English 1,2,3,4



JERRY HELMS

Football 3,4
 Track 1,2,3,4
 Agriculture 1,2,3,4
 Art Club 4
 "C" Club 4
 Driver Training 2
 Junior Play 3

DELORES KAY HIATT

Dragonettes 1,2,3,4
 F.H.A. 1,2,3,4
 "A" Club 1,2,3,4
 Masque and Gavel 2,3,4
 Student Council 2,4
 Majorette 3,4
 "A" Club Secretary 2
 "A" Club Treasurer 3
 Junior Play 3
 Drum Major 4

TERRY HILL

Football 1,2,3,4
 Basketball 1,2,3,4
 Track 1,2,3,4
 "C" Club 2,3,4
 Band 1,2,3
 Class President 1,2
 "C" Club Secretary 3
 "C" Club Vice-President 4
 Boys' State 4
 Junior Play 3

DALE HOARD

Basketball 1
 Driver Training 2
 Speech 4
 Drama 4
 General Wood 3
 General Shop 2
 Art 2,3
 Mathematics 1
 Mechanical Drawing 4
 Bookkeeping 4





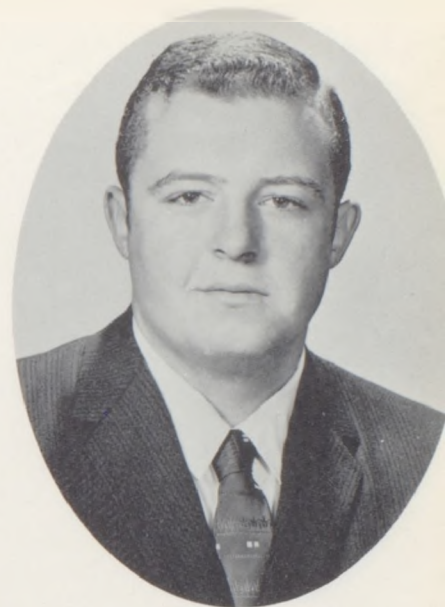
PAUL HUTTON

Football 1,2,3,4
 Basketball 1
 Track 1,2,3,4
 F.F.A. 1,3,4
 F.F.A. Secretary 4
 Band 1,2,3,4
 Band Vice-President 4
 "C" Club 3,4
 Junior Play 3



MARVIN JOHNSON

Band 1,2,3,4
 Masque and Gavel 2,3,4
 Shop 2,4
 Driver Training 3
 State Music Contest 1,2,3
 State Music Clinic 4
 Junior Play 3
 Boys' Glee 1
 Bookkeeping 4
 Typing 4



ELTON JONES

Basketball 1,2,3
 Football 1,2,3
 Track 1,2,3
 "C" Club 3
 Junior Play 3
 Band 1
 State Music Contest 1
 State Track Meet 3
 Mechanical Drawing 3
 General Wood 4

JACK KESSLER

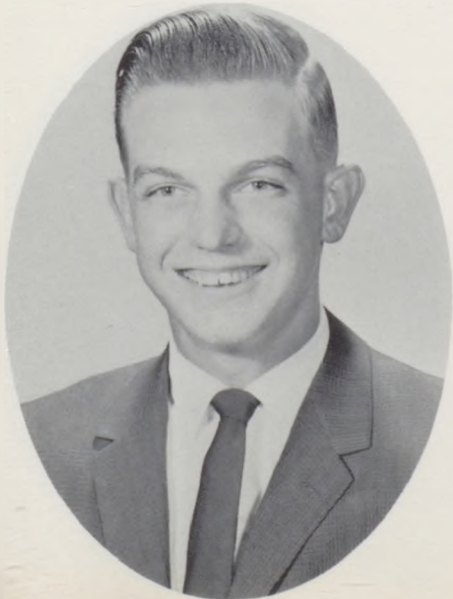
Football 1,2,3
 Basketball 1
 Art Club 1,4
 Band 1,2,3,4
 Junior Play 3
 Pep Band 1,2
 Mathematics 1,3
 Science 2,3
 Typing 4
 Speech 4

CAROLE LAUGHLIN

G.R.C. Band 4
 Dragonettes 1,2,3,4
 Band 1,2,3,4
 Band President 4
 N.C.M.B.A. Band 1,2,3
 State Music Contest 1,2,3
 Masque and Gavel 3,4
 Junior Play 3
 State Commercial Contest 3
 National Honor Society 3,4

GUS McCLELLAND

Spanish I 2
 Spanish II 3
 Class Treasurer 3
 Student Council 4
 National Honor Society 3,4
 Junior Play 3
 Speech and Drama 4





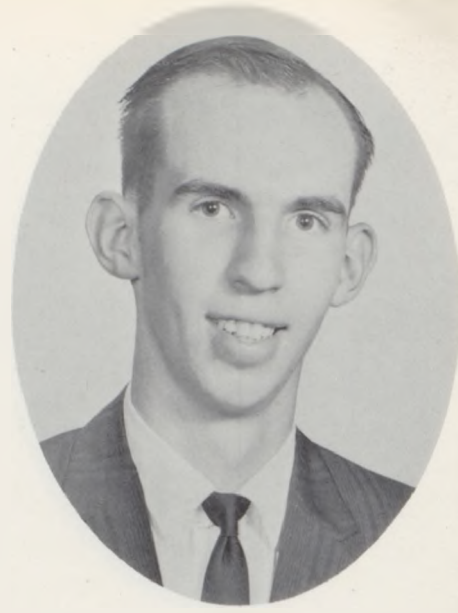
MARGIE McCOLLOCH

- Girls' Glee 1,2,3,4
- F.H.A. 4
- Junior Play 3
- Dragonettes 1,2,3,4
- Dragonette Treasurer 3
- Girls' Glee President 4
- District Music Contest 1,2,3
- State Music Contest 3
- Publications 4



SUSIE McCORD

- "A" Club 2,3
- F.H.A. 4
- Band 1,2,3,4
- Band Secretary 4
- Sax Quartet 2,3,4
- District Contest 1,2,3
- State Music Contest 1,2,3
- Tank Editor 4
- Junior Play 3
- Dragonettes 1,2,3,4



JULIEN McELWAIN

- Basketball 1,2,3,4
- Track 1,2,3,4
- "C" Club 2,3,4
- Masque and Gavel 2,3,4
- All-District 3
- All-State 3
- Boys' State 3
- Junior Play 3
- Band 1,2,3,4

LUTALLUS McQUEEN

- Basketball 1
- Art Club 4
- Art 2,4
- Publications 4
- Junior Play 3
- Typing 4
- Bookkeeping 3
- Shop 2,4
- Driver Trainee 3

DOROTHY ANN McVICKER

- Dragonettes 1,2
- "A" Club 2,3,4
- Art Club 4
- Junior Play Usher 3
- Girls' Basketball 2,3
- Art 1
- English 1,2,3,4
- Secretarial Practice 4
- Sociology 4
- Psychology 4

JAYNE MARQUIS

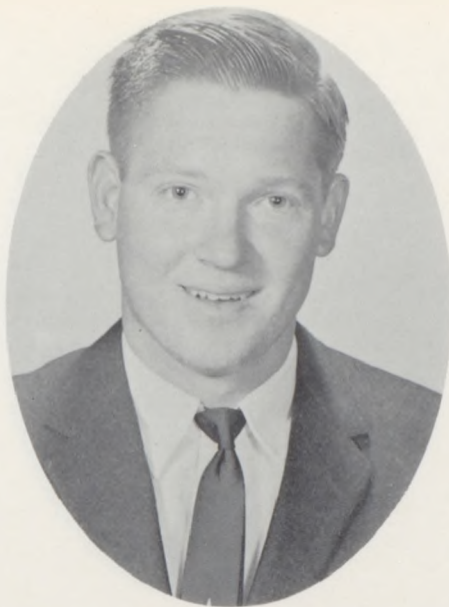
- National Honor Society 3,4
- Dragonettes 1,2,3,4
- Band 1,2,3,4
- Publications 4
- State Contest 1,2,3
- District Contest 1,2,3
- Mixed Chorus 1,3
- Sax Quartet 1,2,3
- Dance Band 2,3
- N.H.S. Reporter 4





LINDA MATTOX

- Dragonettes 1,2
- F.H.A. 3,4
- "A" Club 3,4
- Band 1,2,3,4
- Music Contest 1,2,3
- Junior Play 3
- Sophomore Assembly 2
- Home Economics 1,2,4
- Commercial Subjects 3,4
- Pep Band 1,2,3



ARTHUR WILLIAM MORGAN

- Art Club 3
- Speech 4
- Junior Play 3
- Science 1,3
- Mathematics 1



DIANE MORRIS

- Dragonettes 1,2,3,4
- F.H.A. 1,2,3,4
- "A" Club 1,2,3
- Majorette 1,2,3
- Masque and Gavel 2,3,4
- National Honor Society 3,4
- Homecoming Attendant 2,4
- Junior Play 3
- Student Council 4
- Mystic Editor 4

RONNIE NELSON

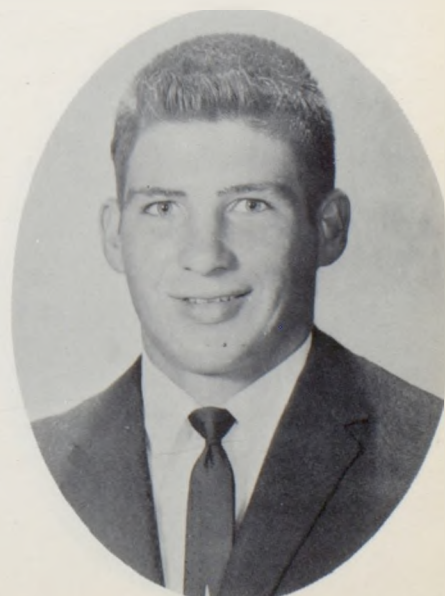
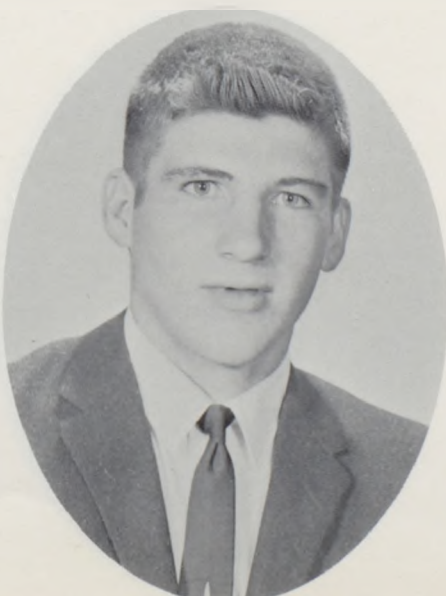
- Student Council President 4
- Student Council Vice President 3
- Football 1,2,3,4
- Basketball 1,2
- Track 1,2,3,4
- "C" Club 2,3,4
- Student Council 1,3,4
- Tank Royalty 1,3
- Friendliest Boy 3
- Junior Play 3

MIKE O'CONNOR

- Football 1,2,3,4
- Track 1,2,3,4
- F.F.A. 1,2,3,4
- "C" Club 3,4
- Junior Play 3
- F.F.A. Officer 4
- Boys' Glee Club 1
- Driver Training 3
- Bookkeeping 4

JOSEPH PATRICK O'CONNOR

- Football 1,2,3,4
- Track 1,2,3,4
- State Farm Mec. Team 3
- Typing 4
- F.F.A. 1,3
- Vocal Music 1,4
- Junior Play 3
- Bookkeeping 4
- Driver Training 3





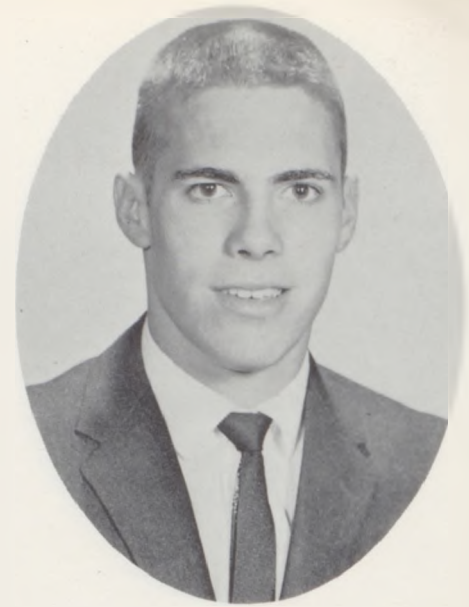
RAYMOND RITCHEY

- Football 1,2,3,4
- Track 3,4
- Golf Team 1,2,3,4
- State Track Meet 3
- Conference Golf Champion . . . 3
- "C" Club 2,3,4
- "C" Club President 4
- Homecoming Co-Captain . . . 4
- Football Tri-Captain 4
- Boys' State 3,4



MACK SCANLAN

- Football 1,2,3,4
- Basketball 1,2,3,4
- Track 1,2,3,4
- "C" Club 2,3,4
- Student Council Treasurer . . . 3
- Sergeant-at-Arms 1
- Masque and Gavel 2,3,4
- Junior Play 3
- Mathematics 1,2,3,4
- State Basketball Contest . . . 3



EDWARD SEIFERT

- Football 1,2,3,4
- Basketball 1,2,3,4
- Track 1,2,3,4
- Student Council 2,3,4
- National Honor Society 3,4
- "C" Club 2,3,4
- Class President 4
- Junior Play 3
- Mathematics 1,2,3,4
- State Basketball Tournament . . 3

CATE SLOAN

- Class Secretary 1,2,3,4
- Band Vice-President 3
- Student Council 2
- Homecoming Attendant 1
- Dragonettes 1,2,3,4
- National Honor Society 3,4
- Masque and Gavel 2,3,4
- F.H.A. 1,2,3,4
- Mathematics 1,2,3,4
- Junior Play 3

MARY LEE STEVENS

- Art Club 1,4
- Art Club Secretary 4
- Typing 3
- Shorthand 3
- Junior Play 3

CISSY SWEENEY

- Homecoming Queen 4
- Cheerleader 1,2,3,4
- Student Council 1,3,4
- Student Council Secretary . . . 4
- F.H.A. 1,2,3,4
- Tank Royalty 2,3
- "A" Club 2,3,4
- Masque and Gavel 2,3,4
- National Honor Society 3,4
- Sophomore Pilgrimage 2





PETE SWEENEY

Football 1,2,3,4
 Track 1,2,3,4
 Basketball 1,2
 "C" Club 1,2,3,4
 Class Vice-President . . 1,2,3,4
 Art 3,4
 Mixed Chorus 1,2,3
 Junior Play 3
 Mechanical Drawing . . . 4
 Shop 2,3



WILLIAM L. TAYLOR

F.F.A. 1,2,3,4
 General Shop 2,4
 Shop Team 3
 Art 3,4
 Art Club 3,4



DALE UTT

Track 1,2,3,4
 Basketball 1,3,4
 Football 1,2,3,4
 Honorable Mention . . . 3
 Junior Play 3
 Mechanical Drawing . . . 4
 "C" Club 2,3,4
 Art 3,4
 Basketball State Tournament . 3

EDDIE VAUGHN

Art 3,4
 Art Club 3,4
 Tank and Mystic Art
 Editor 4
 Junior Play 3
 Track 1
 Speech and Drama 4
 Shop 2,3
 Mechanical Drawing 4
 Agriculture 1,2
 F.F.A. 1,2

GARY WAGES

Track 3
 National Honor Society . . 3,4
 N.H.S. Vice-President . . . 4
 Junior Play 3
 Basketball 1
 Band 1,2,3,4
 Pep Band 1,2,3
 N.C.M.B.A. Band 1
 Physics 4
 District Science Fair . . . 3

TERRY WATTENBARGER

F.F.A. 1,2,3,4
 F.F.A. Contest 3,4
 P.E. 1,2,3,4
 Typing 4
 Art 3,4
 Industrial Shop 2,4





CAROLE JEAN WENDT

- Masque and Gavel . . . 2,3,4
- National Honor Society . . 3,4
- Dragonettes 1,2,3,4
- F.H.A. 1,2
- Assistant Mystic Editor . . . 4
- N.H.S. Treasurer 4
- Band 1,2,3,4
- Speech and Drama 4
- Spanish I 2
- Music Contest 1,2,3,4



JANICE WHITNEY

- Dragonettes 1,2,3,4
- Masque and Gavel 3,4
- F.H.A. 3,4
- F.H.A. Vice-President 4
- F.H.A. State Convention . . . 3
- Student Council 4
- "A" Club 1,2,3,4
- "A" Club Officer 2,3
- Junior Play 3
- Publications 4



BOB PAINTER

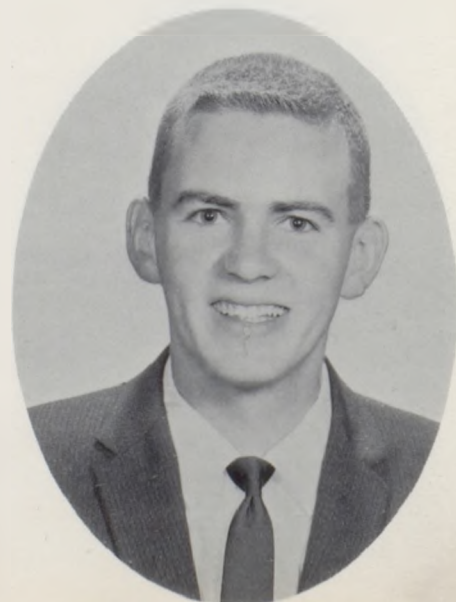
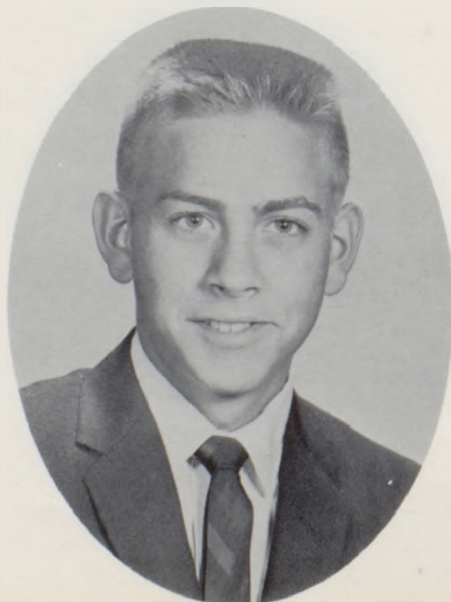
- Basketball 4
- Track 1,2,3,4
- Driver Training 2
- Speech and Drama 4
- Typing 4
- Vocal Music 1

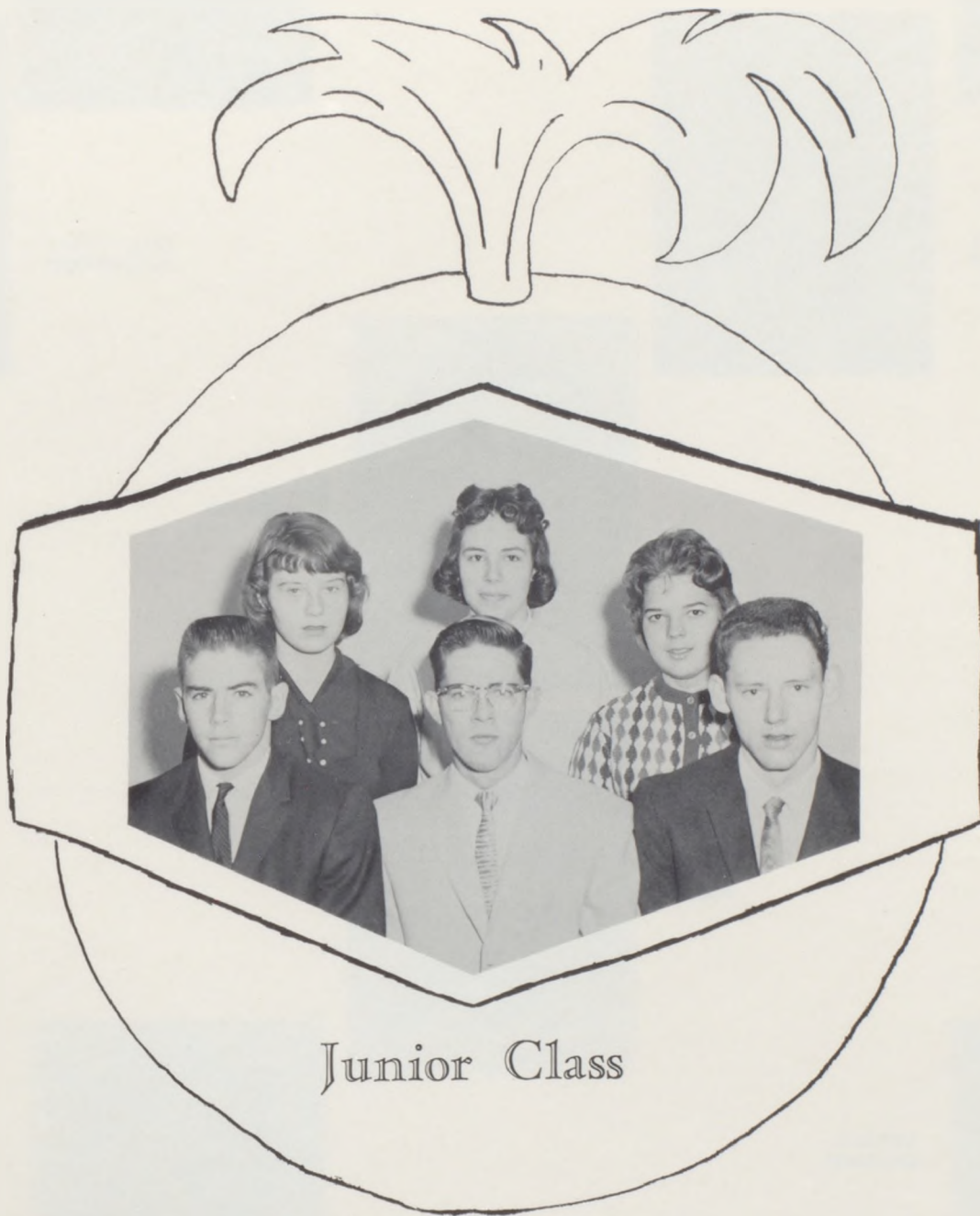
ROBERT WOLFF

- Boys' Glee 1
- Algebra 2
- Biology 2
- Geometry 3
- Shop 3
- Advanced Algebra 4
- Physics 4
- Typing 4
- Mechanical Drawing 4
- Band 1,2,3,4

JOE ZIMMERMAN

- Football Manager 2,3,4
- Basketball Manager 2,3,4
- Track Manager 1,2,3,4
- "C" Club 2,3,4
- Junior Play 3
- "C" Club Treasurer 3
- F.F.A. 1





Junior Class

Junior Class Officers

ROW ONE: Vice-President, Dan Silver; President, Darwin Newcom; Student Council Representative, Eugene Downing. ROW TWO: Student Council Representative, Sondra Marshall; Secretary, Mary Pat Shaw; Treasurer, Mary Beth Kemper.



KATHERINE
AKEY



GARY
BATES



HAROLD
BAUMAN



BILL
BLACKWOOD



BOB
BLACKWOOD



JOE
BLOSS



NOLAN
BRANSON



MYRON
BROWN



RITA
BURNETT



VIRGINIA
COFFMAN

OPAL
COLLIER



LARRY
COOPER



LARRY
COX



STEWART
COX

DENNIS
DAVIS



LINDA
DEAN



ROBERTA
DICE



EUGENE
DOWNING



MARY KAY
DUFF



RALPH
FILLEY





TRENT
GANN



ARTHUR
GRASS



GERALD
GREEN



JANICE
HAMBY



BARBARA
HAMMONTREE



JACKIE
HIATT



THAD
HICKMAN



VALERIE
JOHNSTON



SHARON
HUGHES



DAVID
JONES

MARY BETH
KEMPER



BOB
KIMES



JUDY
KING



BOB
KIRKPATRICK

BOB
LOFT



JEAN
McCULLOUGH



LINDA
McCULLOUGH



PAUL
McLAUGHLIN



SONDRA
MARSHALL



BOB
MUNSON



WANDA
NEWBY



RITA
NICHOLSON



DARWIN
NEWCOM



CHARLES
O'CONNOR



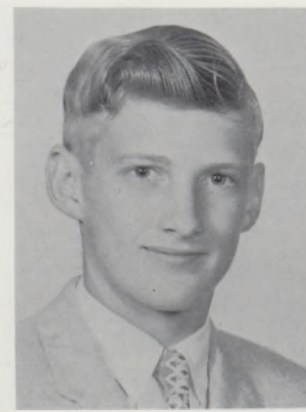
ROBERT
O'DELL



TOM
PARR



PAULA
PHELPS



LOWELL
PORTER



ELAINE
POSEY



PAUL
PULLIAM

MARY PAT
SHAW



SANDRA
SLATER



STEVE, JR.
ROBINSON



DAN
SILVER



ROBERT
STEVENS



NANCY
ZIMMERMAN



KEITH
SWINDLER



JERRY
WALKER



DENNIS
ZEIKLE



PAUL
VORIS



ROBERT
WILLIAMS



FRESHMAN



ROW THREE: E. Hagerman, A. Leach, N. Edwards, R. Bottorff, P. Owen, L. Filley, D. Hahn, J. B. Beavers, R. Pulliam. ROW TWO: M. Warboys, K. Hancock, R. Dunn, N. Richards, J. McCord, L. Snack, S. Williams,

Sponsor Mr. McIntyre. ROW ONE: U. Beam, P. Walker, L. Clevenger, H. Marlatt, M. Kennedy, L. Korneman, P. Watson, C. Bates, J. Willis.

ROW THREE: G. Pierson, P. Kinne, G. Beckett, F. Frazier, G. Castle, M. Bealmer, J. Feighert, Sponsor Mr. Coldren. ROW TWO: L. Nelson, R. Voris, W. Stevens, V. Clark, L. Burnett, P. Foxworthy, J.

McQuerrey, T. Hiatt. ROW ONE: W. McClellan, S. Williams, J. Kellerstrass, T. Zeikle, S. Hammontree, J. Wilson, V. Coffman, J. Taylor.



C L A S S



ROW FOUR: H. Gordon, R. Carnes, B. Wiss, Sponsor Mr. Goodwin. ROW THREE: M. Hanrahan, J. Rooney, J. Place, L. Collier, B. Parr, C. Offutt, L. Bloss, R. Bennett. ROW TWO: R. Ensign, E. Vaughn, R. W.

Connors, B. Hawkins, K. Daniels, E. Schlup, B. Hewitt, S. Johnston. ROW ONE: G. Legg, J. Morgan, L. Luce, H. Ellwood, P. Whiteaker, D. Akey, A. Allen, M. Waldron.

ROW THREE: L. Rudd, D. Goodrich, C. Mann, G. McElwain, M. O'Neal, L. Bauman, Sponsor Mrs. Mitchell. ROW TWO: D. Duff, K. Morriss, J. Gilmore, J. Utt, M. Ocker, M. McVicker, N. Whiteman, W.

Barnard. ROW ONE: N. Jenkins, B. Estell, M. Daniels, A. Buck, J. Zimmerlee, R. Pendleton, L. Streu.



SOPHOMORES



ROW ONE: B. Burnett, K. Byers, D. Munsell, C. Caldwell, S. Smith, J. Hubbard, S. Stratton, D. McVicker. ROW TWO: J. Malloy, R. Pringle, L.

Walker, J. Graham, G. McDonald, J. Gates, M. Chapman, Sponsor Mrs. Dritch.

ROW ONE: R. Bassett, C. Filley, S. Marlatt, G. Conkle, V. Seitz, C. Jones, R. Holman, K. Hamby, C. Mix, S. Carey, M. O'Connor. ROW TWO: C.

Burkhart, J. Hartz, C. Vanderau, A. Chase, J. Cook, J. Kemper, C. Clevenger, Sponsor Mrs. Snyder.

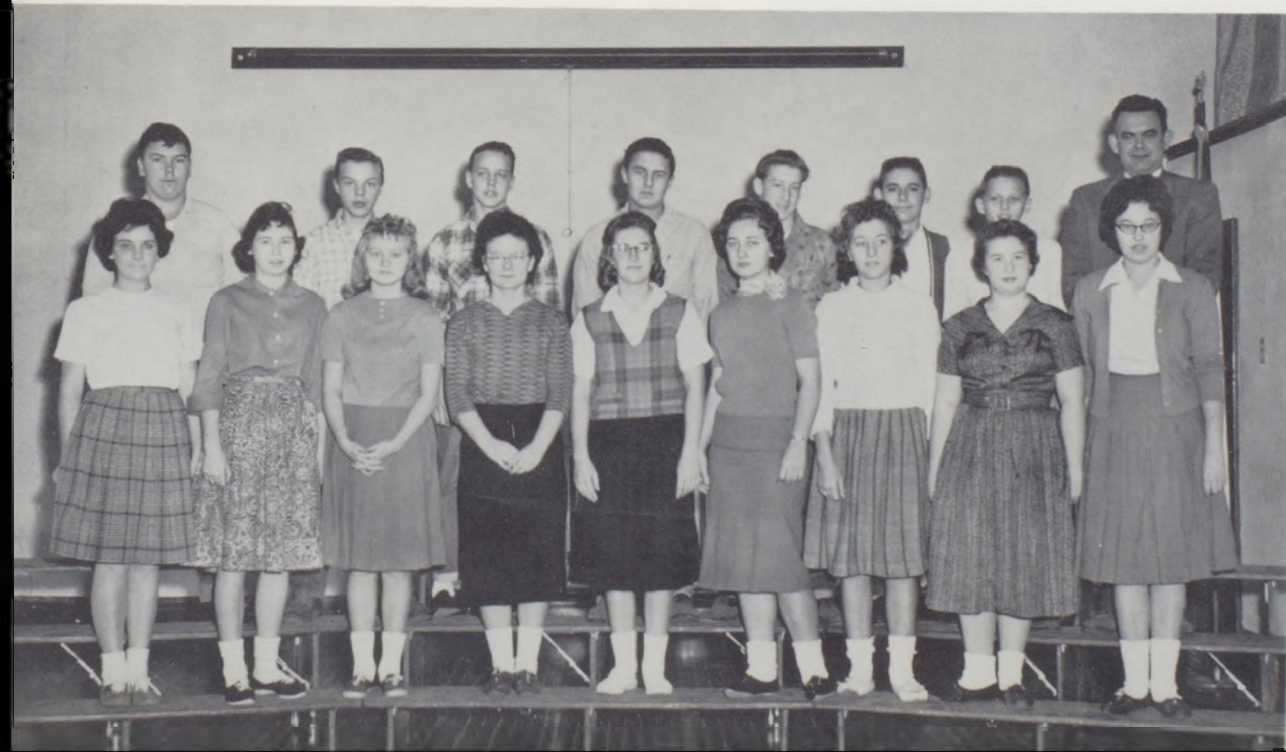


C L A S S



ROW ONE: K. Keener, S. Wilhoit, J. Helm, J. Connell, K. Seifert, P. Reece, E. Hammontree, D. Burnett, L. Stinson, S. Lee. ROW TWO: M. Wrex, B. Packham, B. Bradford, B. Vaughn, R. Diven, L. Kellerstrass, C. Stevens, S. Wilson, D. Estell, Sponsor Mr. Gill.

ROW ONE: C. Wood, B. Shaw, C. King, L. Caverty, L. Bridgeman, S. Cooper, B. Neal, C. Hinds, J. Nelson, Kester, B. Burton, J. Streu, C. Jones, Sponsor Mr. Price.
ROW TWO: G. Keener, J. Thompson, D. Morgan, C.

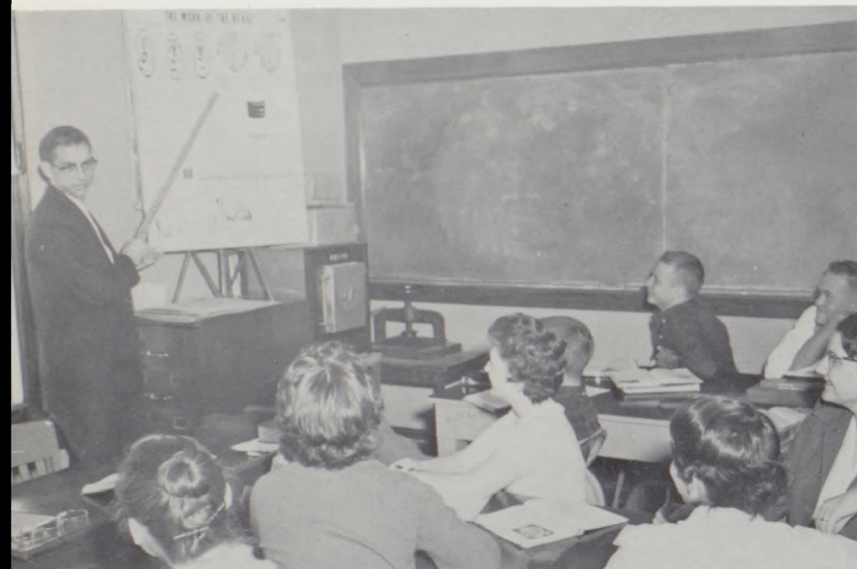




The first step in sewing



Getting out the tank



Learning about the heart

Class

Studying world history

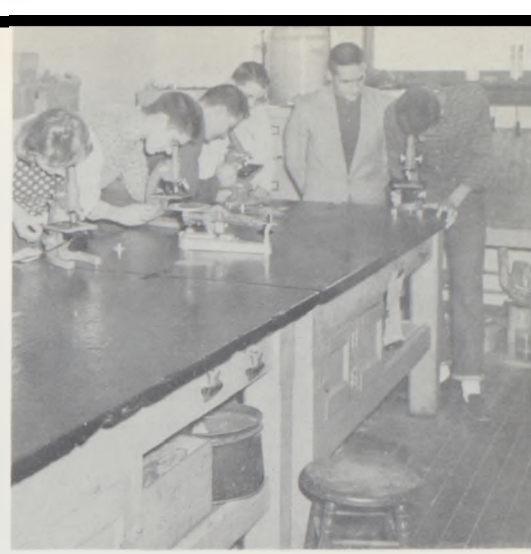


Working with water colors





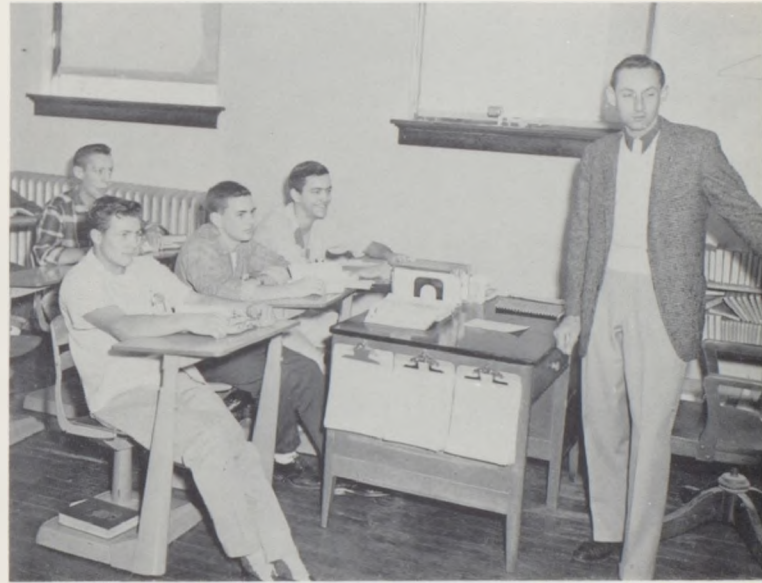
We, as future farmers of America, are the backbone of the nation.



Things look so different under microscopes!

Snaps

Geometry class at work



Developing the art of cooking

Something new in biology everyday





The winning float by seniors



Pinning on victory ribbons

Homecoming Snaps



Queen Pat and her escorts



The freshman float

The sophomore float



Homecoming royalty





FEATURES



Homecoming 1960



Our Queen

Her majesty was loveliest.
Yes, she was selected above the rest.
A sweeter queen there'll never be,
I'm sure that all who know agree.

Queen Pat, we know when this day's gone;
Your radiance will still live on.
The memories made this perfect day
Will never, never fade away.

HOMECOMING



Coronation October 14, 1960

PAT SWEENEY
DIANE MORRISS JACKIE HIATT
KAREN MORRISS JEAN HARTZ

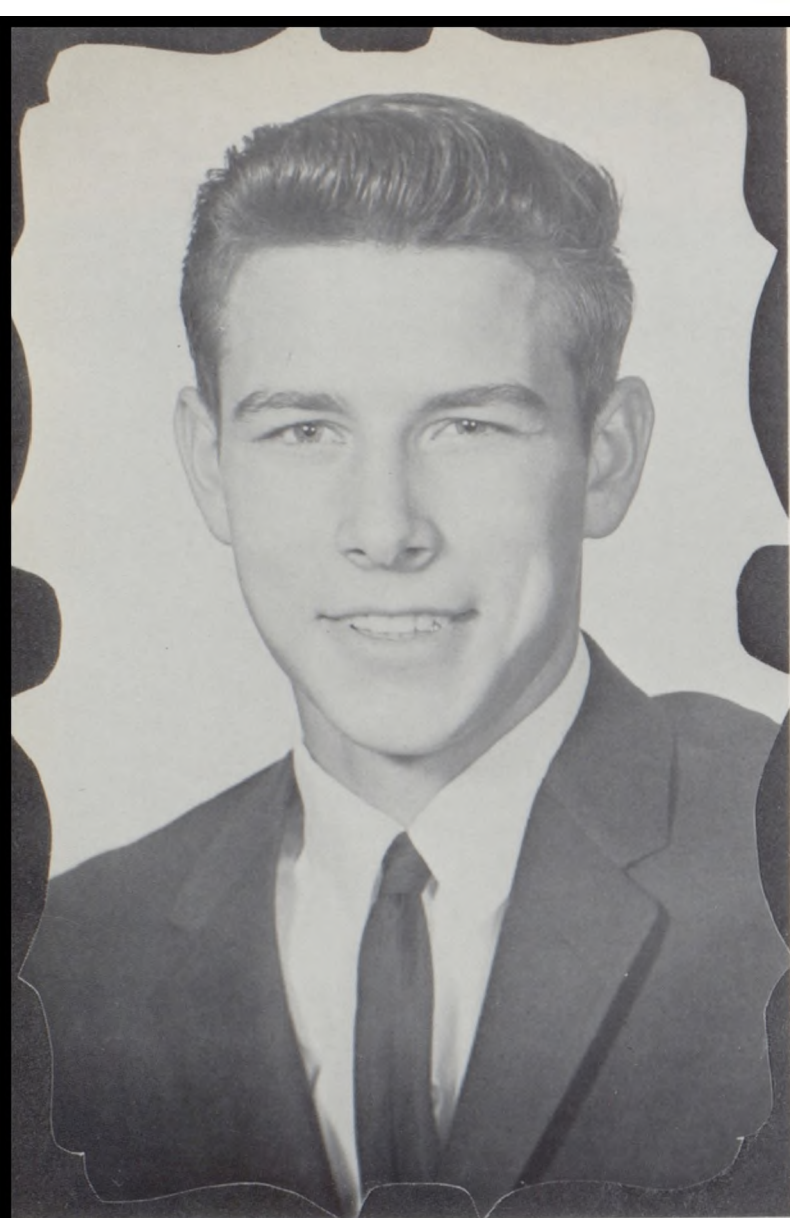


Our Mystic Queen, Jane Beavers



Our Mystic King, Ronnie Nelson





Tank King

Danny Lee Gooding, son of Mr. and Mrs. Harold Gooding, has been chosen by the student body as Tank King for 1961. He entered Cameron High School as a freshman and now is completing his senior year.

Danny has been an outstanding athlete during his four years at C.H.S. He has participated all four years in every sport that is offered by Cameron High. He is a member of "C" Club, and was chosen "the most handsome boy" of C.H.S.

Danny's ambition is to attend Maryville college and be a jet pilot.

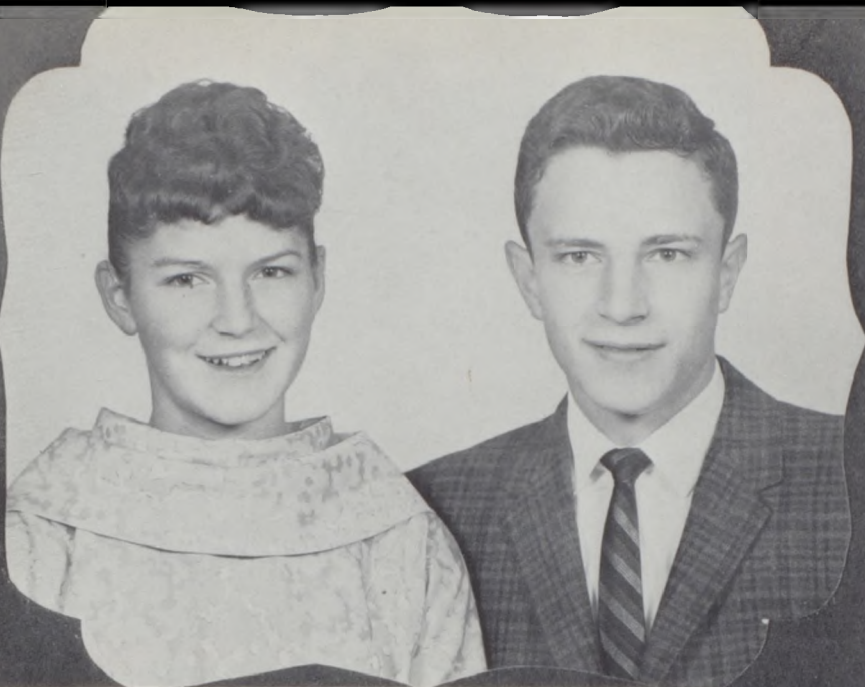
Tank Queen

Serita Sue Clawson, daughter of Mr. and Mrs. W. E. Clawson, has been chosen our 1961 Tank Queen. Serita was born June 23, 1943, and has attended all twelve years of school in Cameron.

Serita has been a Majorette, a member of Student Council, National Honor Society, Drag-onettes, and is outstanding in the field of art. She was elected the best girl athlete.

Serita's comment is: "It was indeed an honor to have been chosen your Tank Queen. It has made my senior year complete, and I shall remember it always."





PRINCESS

Jackie Hiatt is the daughter of Mr. and Mrs. Walt Hiatt. Jackie has been cheerleader and Homecoming attendant her sophomore and junior years. She was also sophomore countess.

PRINCE

Paul Voris is the son of Mr. and Mrs. Paul T. Voris. Paul is vice-president of the Student Council. He attended the Sophomore Pilgrimage. He is outstanding in athletics.

COUNTESS

Jean Hartz is the daughter of Rev. and Mrs. John Leslie Hartz. She was Homecoming attendant her freshman and sophomore years.

COUNT

Bob Bradford is the son of Mr. and Mrs. C. L. Bradford. His favorite sports are, baseball, basketball, and football.

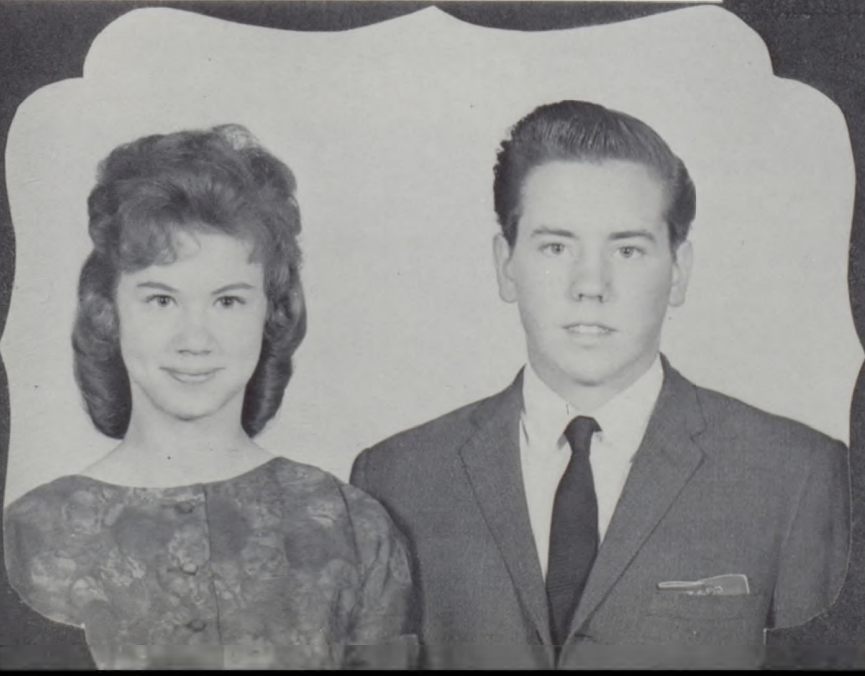


VISCOUNTESS

Susie Williams is the daughter of Mr. and Mrs. James R. Williams. She is a member of Dragonettes and Student Council, and also enjoys music.

VISCOUNT

Ernest Owen Vaughn is the son of Mr. and Mrs. E. K. Vaughn. He has been on the honor roll the first and the second quarters.





MOST SOPHISTICATED SENIOR
Diane Morriss
FLUSTRATED FRESHMAN
Jerry Place



JOLLIEST JUNIOR
Valerie Johnston
SILLIEST SOPHOMORE
Carlotta Wood



Tank

BEST GIRL AND BOY ATHLETES
Gary Foland
Serita Clawson

BEST GIRL PALS
Carol Caldwell
Susan Carey



MOST COURTEOUS BOY AND GIRL
Ronnie Nelson
Cissie Sweeney





PEPPIEST STUDENT
Cissie Sweeney
LAZIEST STUDENT
Elton Jones



MOST HANDSOME BOY
Danny Gooding
PRETTIEST GIRL
Jean Hartz



MOST LIKELY TO SUCCEED
Cate Sloan
Gary Cooper

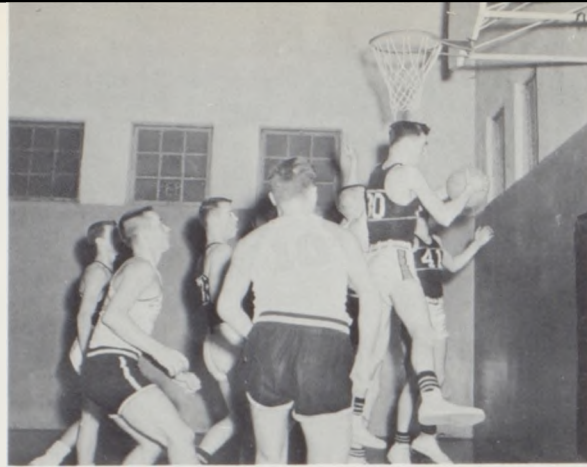
Elections

BEST BOY PALS
Jerry Helms
Dale Utt

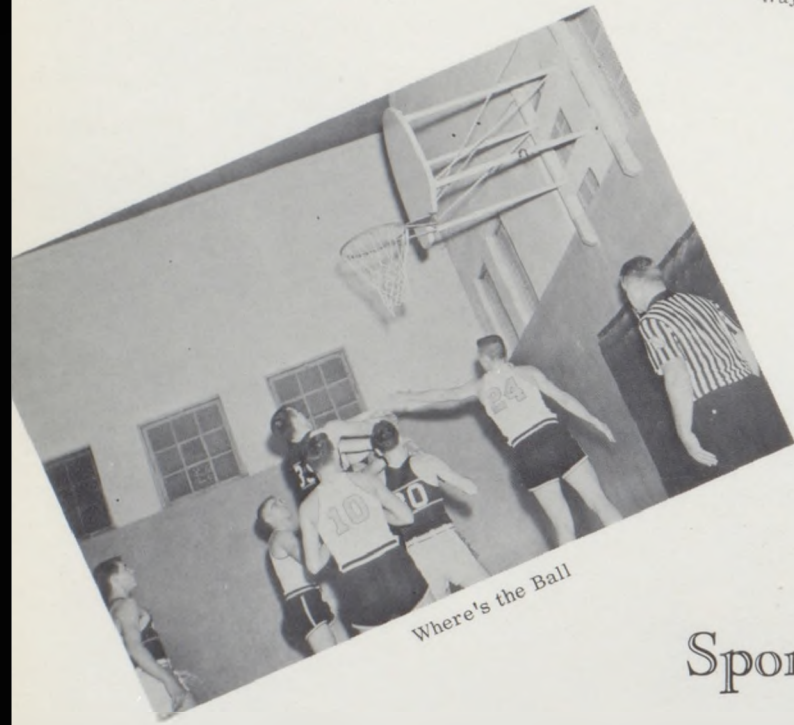


FRIENDLIEST GIRL
Cissie Sweeney
FRIENDLIEST BOY
Gary Cooper

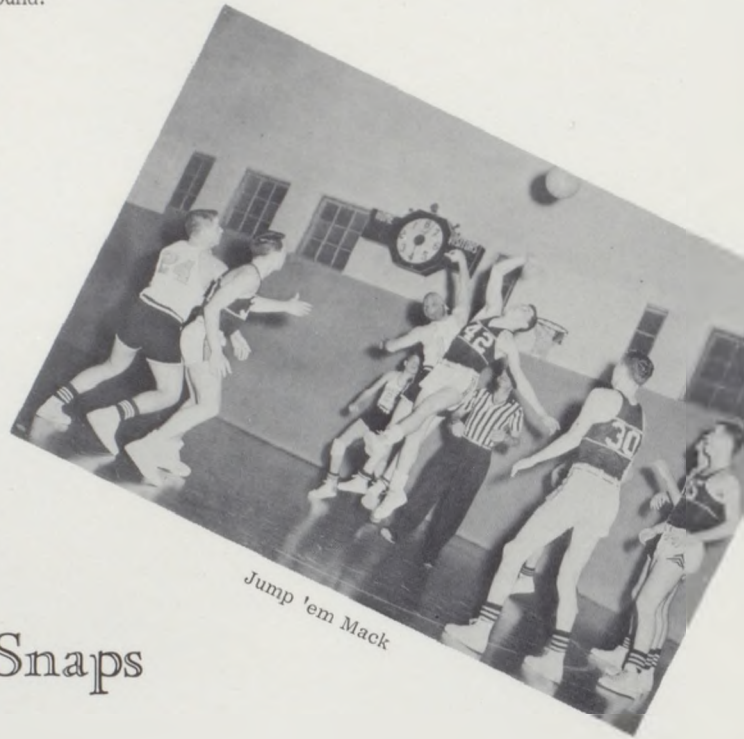




Way to rebound!



Where's the Ball



Jump 'em Mack

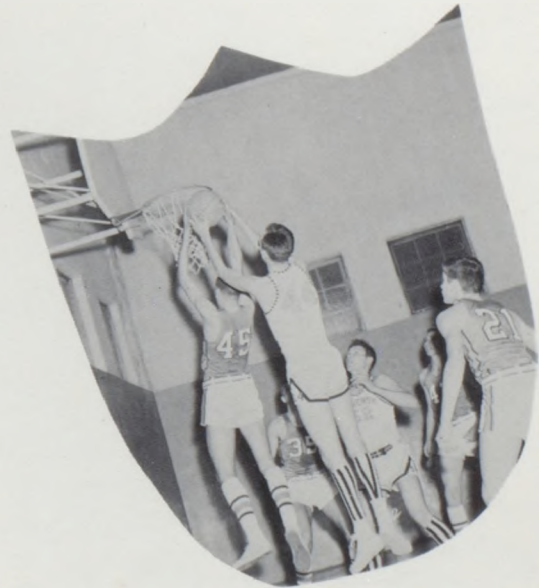
Sport Snaps

Go! Fight! Win!





SPORTS



C.H.S. Cheerleaders



JANE BEAVERS
Senior



JUDY KING
Junior



JACKIE HIATT, Junior

SHARON LEE
Sophomore



KAREN MORRIS
Freshman





CHEERLEADERS: J. Beavers, J. King, J. Hiatt, K. Morriss, S. Lee, P. Sweeney. OFFICERS: C. Carson, C. Sloan, M. Estep, K. Seifert, D. Morriss, B. Gilchrist, J. Whitney. SPONSORS: Miss Hunziger, Mrs. Snyder. MEMBERS: D. Akey, K. Akey, L. Bloss, L. Bridgeman, B. Burnett, K. Byers, C. Caldwell, S. Carey, S. Clawson, L. Clevenger, V. Coffman, V. Coffman, O. Collier, S. Cooper, G. Conkle, J. Connell, C. Currell, R. Dunn, H. Ellwood, M. Farnan, B. Fick, J. Fore, P. Foxworthy, J. Gilmore, E. Gordon, A. Hahn, K. Hamby, J. Hamby, S. Hammontree, J. Hartz,

B. Hedges, J. Helm, D. Hiatt, C. Hinds, J. Hubbard, N. Jenkins, K. Keener, J. Kellerstrass, B. Kemper, C. King, C. Laughlin, L. Luce, S. Marshall, J. Marquis, M. McColloch, J. McCord, S. McCord, J. McQuerrey, C. Mix, D. Munsell, J. Nelson, M. O'Connor, C. Offutt, P. Phelps, E. Posey, P. Reece, V. Seitz, B. Shaw, S. Smith, S. Stratton, J. Taylor, J. Utt, M. Waldren, P. Walker, C. Wendt, P. Whiteaker, N. Whiteman, S. Whilhoit, S. Williams, S. Williams, C. Wood, T. Zeikle.

Dragonettes



Cheerleaders





The Football Squad

ROW ONE: D. Utt, D. Fore, P. Hutton, D. Coffman, J. Helms, D. Gooding, K. Bridgeman, P. Sweeney, G. Foland, T. Hill, G. Cooper, P. O'Connor, R. Nelson, B. Seifert, M. Scanlan, M. O'Connor, R. Ritchey. ROW TWO: Coach Freeman, S. Cox, D. Silver, P. Voris, B. Kimes, N. Branson, T. Gann, L. Cooper, L. Cox, J. Bloss, B. Loft, B. Munson, C. O'Connor, D. Zeikle, Coach Coldren. ROW

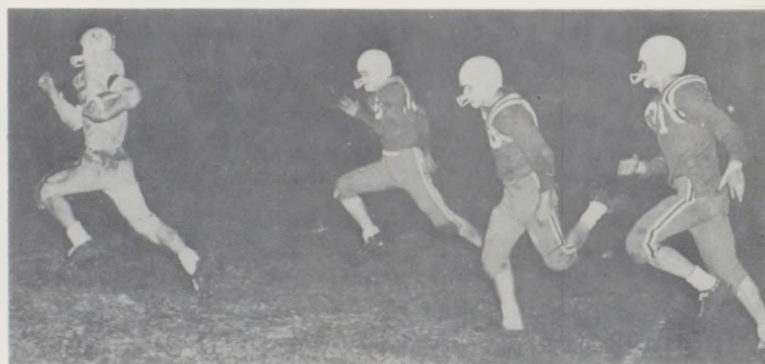
THREE: Coach Miller, W. McClellan, T. Hiatt, J. Cook, C. Jones, D. Estell, J. Kemper, J. Graham, B. Bradford, M. Chapman, G. Castle, N. Edwards, J. Morgan, R. W. Conners, Coach Sarris. ROW FOUR: J. Zimmerman, J. Rooney, R. Voris, B. Estell, A. Leach, A. Buck, L. Collier, R. Carnes, G. McElwain, B. Blackwood. ROW FIVE: E. Hagerman, J. B. Beavers, J. Place, M. O'Neal.

CAMERON

20	Albany
32	Princeton
0	King City
48	Bethany
58	Grant City
29	Maysville
20	Hamilton
21	Gallatin
34	Stanberry

OPPONENTS

0
0
13
0
0
7
6
13
6





KENNETH BRIDGEMAN



RAYMOND RITCHEY



PETE SWEENEY



DALE UTT



DONNIE COFFMAN



JERRY HELMS

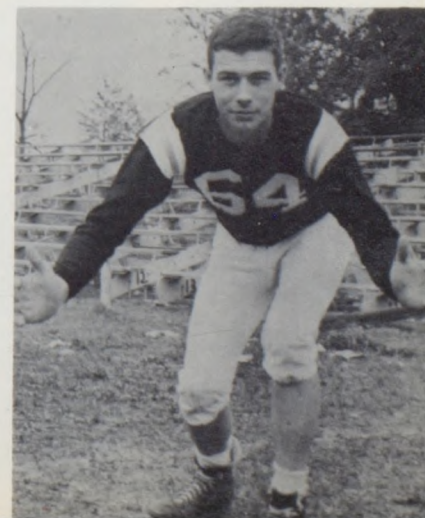
PAUL VORIS



TERRY HILL



DANNY GOODING





LARRY COX



BOB LOFT



GARY FOLAND



JOE BLOSS



BUZZY SEIFERT

JERRY GRAHAM



NOLAN BRANSON



CHARLIE O'CONNOR



JIM COOK



MIKE CHAPMAN





MIKE O'CONNOR



DENNIS ZEIKLE



PAUL HUTTON



BOB BRADFORD



GARY COOPER

PAT O'CONNOR



DARRELL FORE



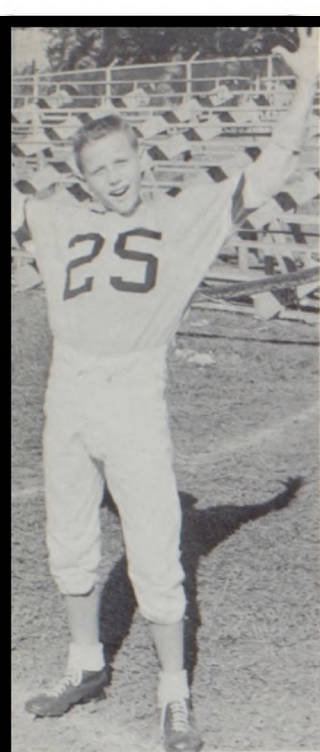
MACK SCANLAN



RON NELSON



BOB MUNSON

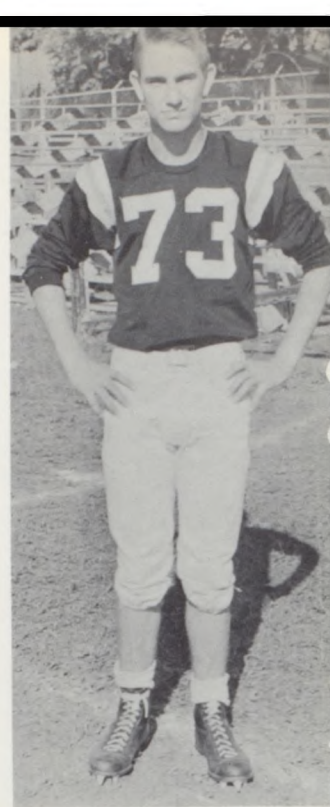


CALVIN JONES

TRENT GANN



BOB KIMES



JOHNNY KEMPER

STEWART COX



DANNY SILVER



LARRY COOPER

DON ESTELL





Track

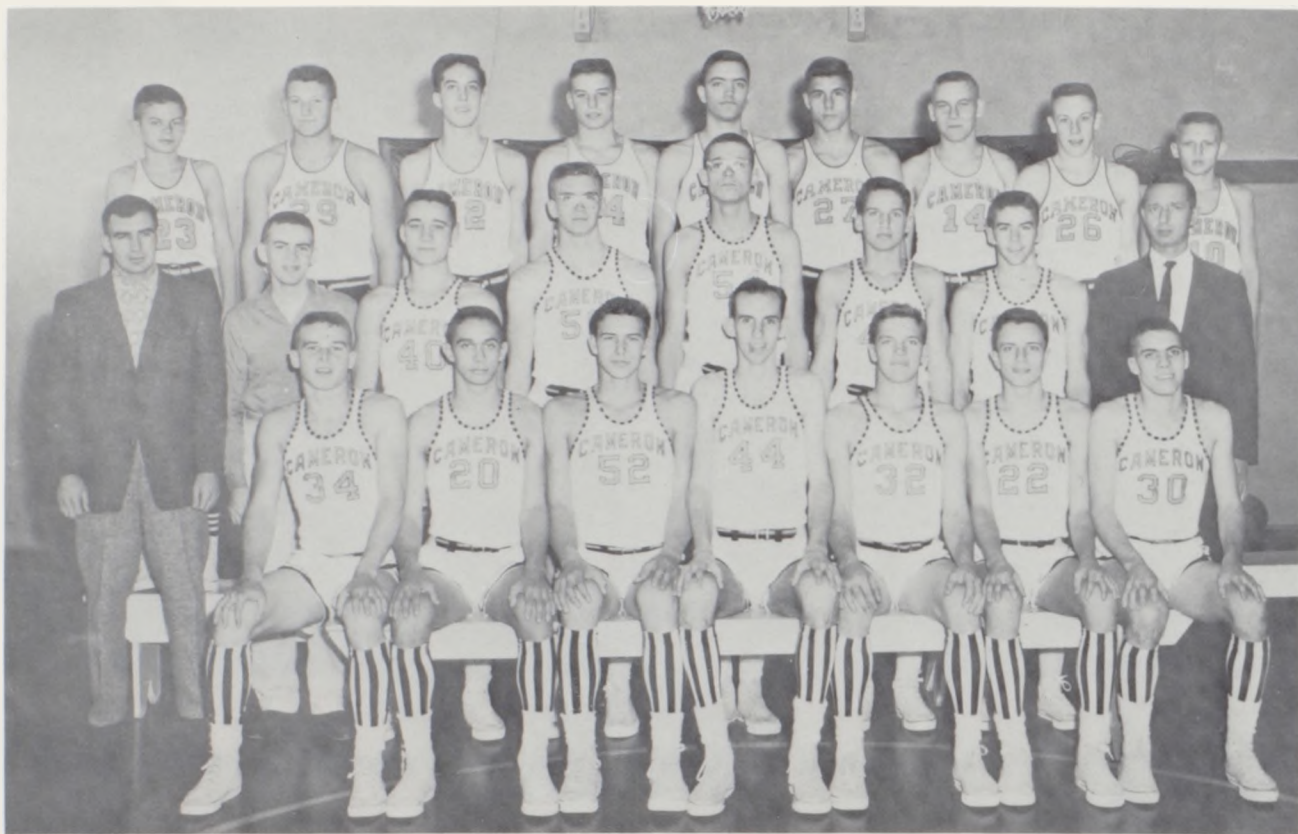
ROW ONE: P. Sweeney, T. Hill, B. Seifert, D. Silver. ROW TWO: M. Scanlan, D. Utt, R. Ritchey, D. Gooding, G. Foland.

"C" Club

ROW ONE: D. Ziekle, B. Kimes, B. Munson, N. Branson, J. Bloss, L. Cox, D. Silver, D. Coffman, D. Fore, J. Kemper, P. Hutton, ROW TWO: B. Blackwood, B. Loft, P. Voris, M. Scanlan, C. O'Connor, K. Bridgeman, P. Sweeney, G. Foland,

B. Seifert, G. Cooper, M. O'Connor, J. Zimmerman. ROW THREE: T. Hill, D. Utt, R. Ritchey, T. Gann, J. McElwain, R. Nelson, D. Gooding, B. Bradford, L. Cooper, P. O'Connor.





1960-61 Basketball Squad

ROW ONE: M. Scanlan, G. Foland, D. Gooding, J. McElwain, D. Utt, P. Voris, B. Seifert. ROW TWO: Asst. Coach Sarris, Manager J. Zimmerman, L. Cooper, T. Gann, B. Painter, C.

O'Connor, D. Silver, Coach Gill. ROW THREE: M. Chapman, B. Bradford, D. Estell, J. Kemper, B. O'Dell, D. Davis, L. Cox, J. Cook, C. Jones.

BUZZY SEIFERT



JULIEN McELWAIN

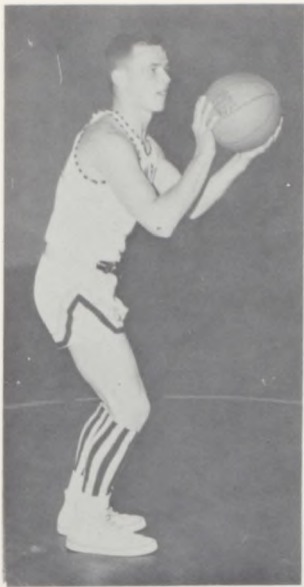


GARY FOLAND



DANNY GOODING

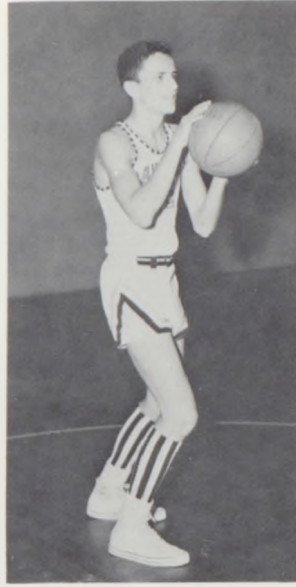




MACK SCANLAN



BOB PAINTER



PAUL VORIS



CHARLES O'CONNOR

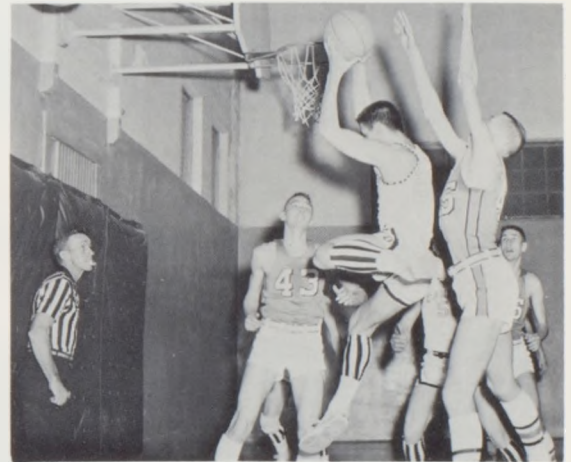
Basketball Scores

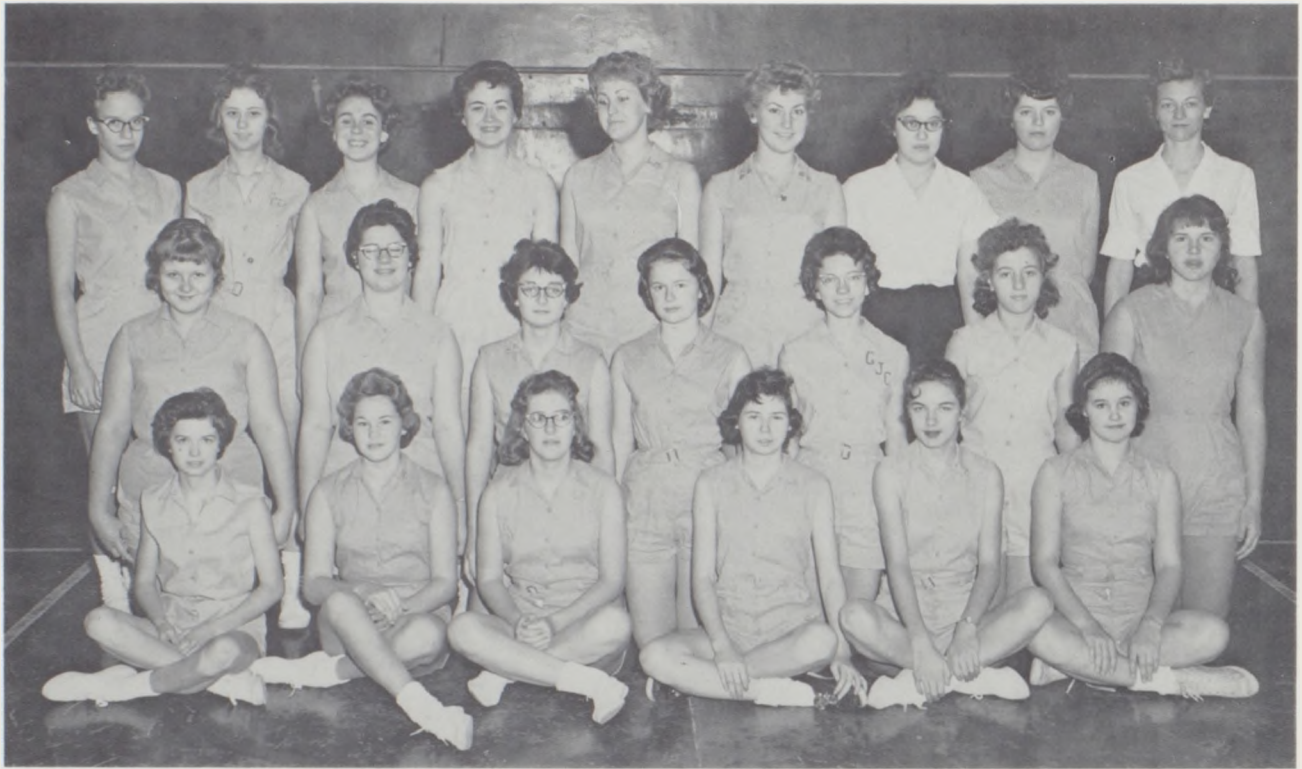
Cameron	59	Princeton	24
Cameron	62	Savannah	54
Cameron	52	King City	63
Cameron	60	Lafayette	55
Cameron	68	Grant City	28
Cameron	48	Albany	51
Cameron	49	Trenton	39
Cameron	59	Bethany	44
Cameron	66	Lathrop	46
Cameron	50	Maysville	31
Cameron	39	Hamilton	45
Cameron	53	Trenton	56
Cameron	60	Gallatin	31
Cameron	61	Kearney	39
Cameron	55	Stanberry	31

TRENT GANN

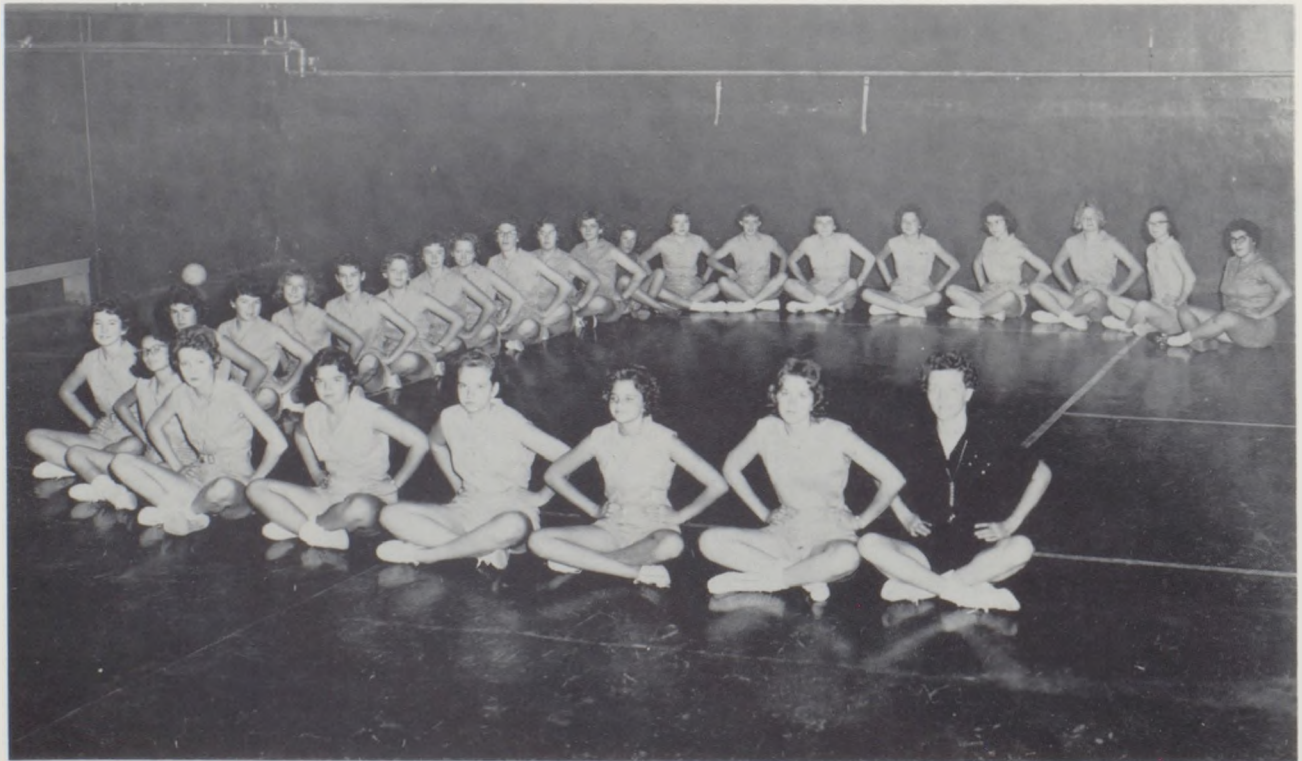
LARRY COOPER

DANNY SILVER





First and Second Hour Girls' P.E.





Third and Fourth Hour Girls' P.E.





"A" Club

ROW ONE: L. McCullough, B. Shaw, P. Sweeney, B. Gilchrist, J. Hubbard, S. Lee. ROW TWO: S. Clawson, R. Nicholson, L. Mattox, C. Feighert, E. Posey, O. Collier, J. Whitney. ROW

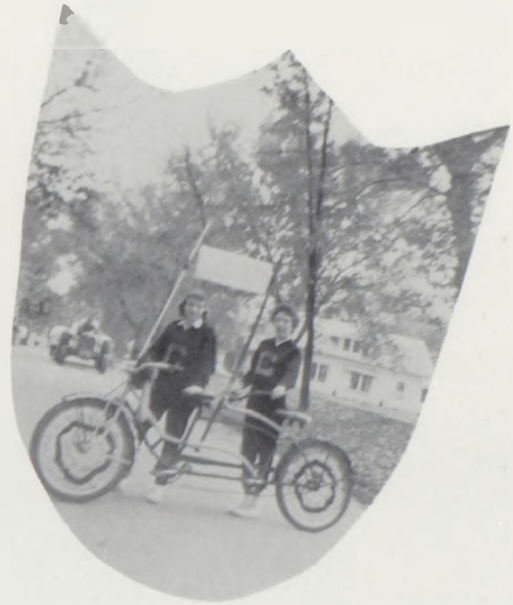
THREE: Mrs. Snyder, sponsor; L. Bloss, J. Beavers, D. Hiatt, D. Hagerman, D. McVicker, V. Coffman, J. McCord, D. McVicker.

"A" Club is an organization comprised of girls interested in athletic activities. Each year, "A" Club participates in "playdays" with neighboring schools and intramural basketball games within the school.

"A" CLUB OFFICERS

President	D. Hagerman
Vice-President	O. Collier
Secretary	L. McCullough
Treasurer	G. Conkle
Student Council	B. Gilchrist
Sponsor	Mrs. Snyder





ACTIVITIES





RONNIE NELSON
President



PAUL VORIS
Vice-President

Student
Council
Officers

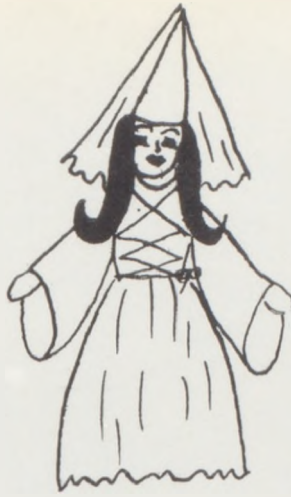


SUE COOPER
Treasurer



PAT SWEENEY
Secretary

Student Council Activities



- Freshman Orientation
- Sponsored All Homecoming Activities
- Sponsored the "Y" Drive
- Tri-County Conventions
- Thanksgiving Assembly
- Christmas Dance
- Sponsored Popcorn Machine at Football and Basketball Games
- New Popcorn Machine
- Student Council Elections
- Delegates to State Convention





National Honor Society

OLD MEMBERS: J. Fore, B. Gilchrist, M. Estep, G. Wages, D. Morriss, C. Sloan, G. McClelland, G. Cooper, B. Seifert, C. Laughlin, C. Carson, S. Clawson, J. Marquis, E. Gordon,

C. Sweeney, C. Wendt, NOT PICTURED: M. Farnan. NEW MEMBERS: P. Phelps, M. Shaw, D. Newcom, E. Downing, P. Voris, C. O'Connor, J. Hamby, J. Beavers.

OFFICERS

President	G. Cooper
Vice-President	G. Wages
Secretary	M. Estep
Treasurer	C. Wendt
Student Council	S. Clawson
Reporter	J. Marquis





National Honor Society Induction Ceremony

The Cameron Chapter of the National Honor Society conducted its second induction ceremony on February 8, in which eight new members were received. A reception for the parents and members was held immediately following the ceremony. The chapter participated in the following activities this year: Science Fair, a party for the freshmen and sophomores on the honor roll, a party for the Training Center for retarded children, a magazine sale, the annual intramural basketball tournament, and the N.H.S. banquet.



Masque and Gavel

OFFICERS

Student Council	J. Whitney
Treasurer	E. Downing
President	M. Scanlan
Vice-President	S. Clawson
Secretary	B. Gilchrist
Sponsor	Mrs. Holland



ROW ONE: J. Beavers, J. McElwain, E. Downing, C. Wendt, M. Scanlan, C. Carson, C. Currell, J. Whitney, J. Hamby, B. Blackwood, J. Fore, J. Fore.
ROW TWO: P. Sweeney, M. Estep, C. Laughlin, B.

Fick, S. Clawson, D. Hiatt, B. Gilchrist, C. Sloan, J. Hiatt, P. Phelps, S. Marshall, D. Morriss, M. Kemper, C. Feighert.

ROW ONE: C. Wood, M. Shaw, J. Connell, S. Hughes, D. Newcom, G. McClelland, K. Hamby, E. Gordon, J. Hartz, M. Duff. ROW TWO: B. Vaughn, J. Cook, S.

Lee, S. Wilhoit, G. Conkle, J. Kemper, P. Voris, M. Chapman, V. Johnston, D. Hagerman, K. Akey.





O. Collier, S. Hughes, J. Hamby.



D. Newcom, M. Kemper.

Junior Class Play

Pink Magic, an amusing comedy about American tourists in Mexico City, was presented by the members of the junior class on November 11, 1960. The scenery and costumes were unusually good, and the cast enjoyed giving this clever production as the annual junior class play.



G. Green, B. Blackwood, T. Parr, G. Bates, M. Shaw, C. O'Connor, P. Phelps, V. Johnston, P. Voris, M. Kemper, D. Newcom, B. Blackwood, S. Marshall.

V. Coffman, T. Gann, M. Kemper, S. Slater, M. Shaw.



P. Voris, M. Kemper, S. Marshall, V. Johnston.



F.H.A.



ROW ONE: P. Whiteaker, B. Shaw, C. Mix, K. Byers, L. Luce, J. Hartz, S. Carey, C. Caldwell, S. Lee, C. Carson, D. Hiatt, C. Sloan, C. Currell, L. Bridgeman. ROW TWO: Sponsor Miss Hunziger, M. Kennedy, G. Conkle, S. Wilhoit, C. Hinds, J. Utt, D. Munsell, L. Bloss, J. Beavers, J. Whitney, M. McColloch, C. Feighert. ROW THREE: K. Seifert, S. Williams, S. Smith,

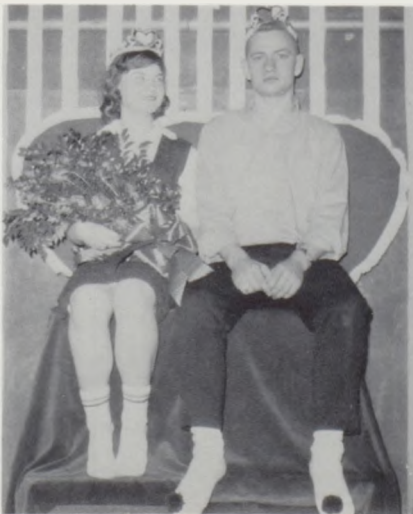
M. O'Connor, C. Jones, J. Connell, K. Morriss, B. Burnett, N. Jenkins, E. Gordon. ROW FOUR: K. Akey, W. Barnard, V. Clark, T. Zeikle, A. Allen, M. Ocker, P. Walker, N. Richards, M. Farnan, J. Fore. ROW FIVE: V. Coffman, M. Shaw, M. Duff, J. McQuerrey, J. Helm, S. Cooper, S. Stratton, J. Gilmore, J. Nelson, L. Mattox, S. McCord.



- | | |
|---------------------------|------------------|
| President | Carolyn Currell |
| Vice-President | Janice Whitney |
| Secretary | Kathy Akey |
| Treasurer | Kathy Seifert |
| Historian | Jennifer Connell |
| Reporter | Sharon Stratton |
| Parliamentarian | Jean Hartz |
| Student Council | Jane Beavers |
| Song Leader | Judy Helm |



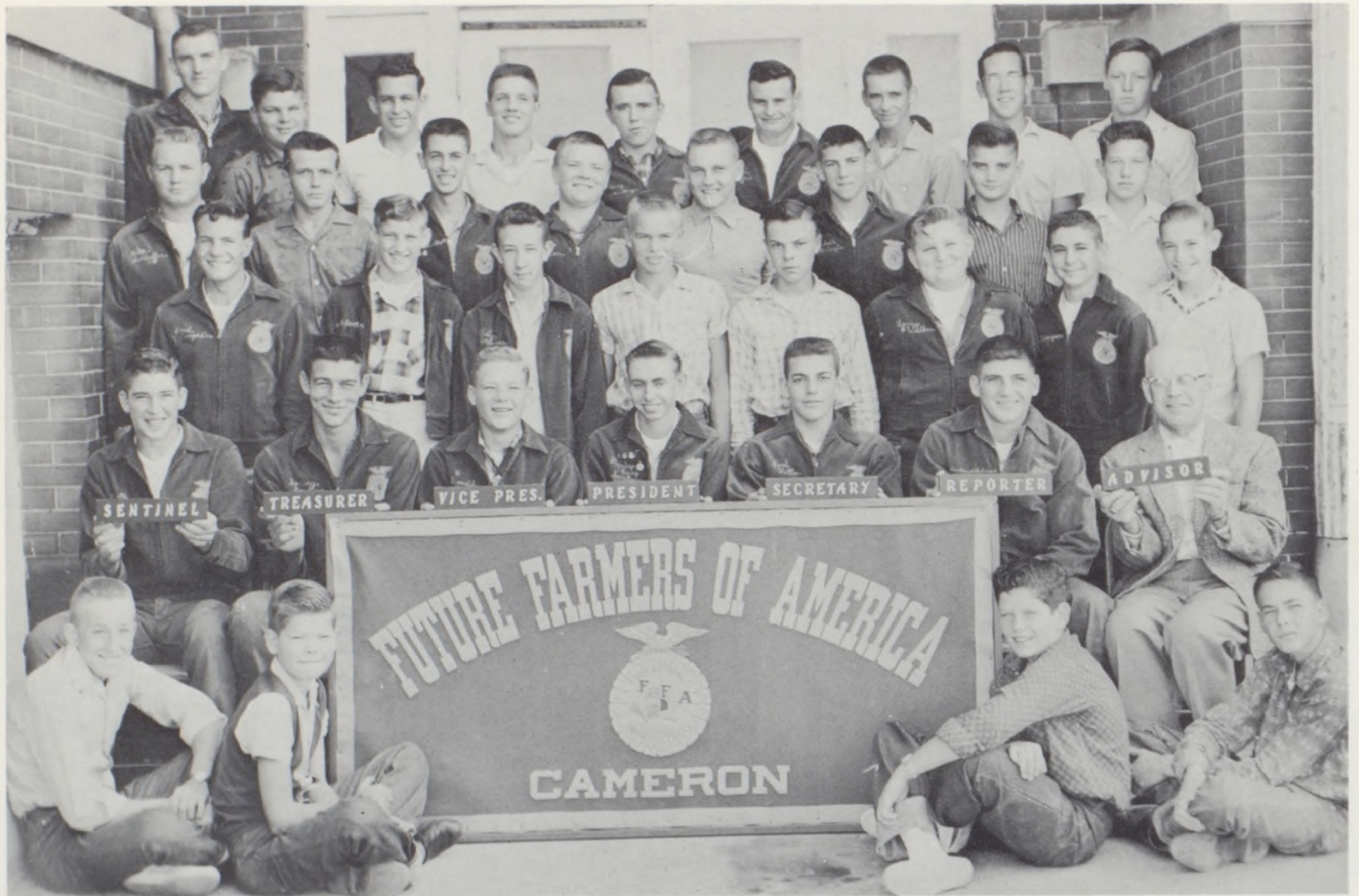
F.H.A. Sweetheart King and Queen



F.H.A. ACTIVITIES

Car Wash
Regional Meeting
Christmas Tea
Sweetheart Dance
Football Stand
State Convention
F.H.A. Week
Spring Fashion Show





F.F.A.

ROW ONE: D. Hahn, W. McClellan, L. Korneman, R. Pulliam.
 ROW TWO: K. Bridgeman, D. Gooding, D. Coffman, S. Bray,
 P. Hutton, M. O'Connor, Advisor Mr. Hill. ROW THREE: P.
 McLaughlin, L. Porter, L. Kellerstrass, R. Diven, J. Thompson,
 L. Walker, J. Streu, G. Pierson. ROW FOUR: K. Swindler, R.

Underwood, H. Bauman, B. Munson, L. Cox, R. Pringle, L.
 Filley, D. Duff. ROW FIVE: J. Walker, B. Taylor, J. Helms,
 D. Utt, T. Wattenbarger, D. Goodrich, P. Pulliam, A. Chase,
 G. McDonald.





Art Club

ROW TWO: Sponsor Mrs. Everett, R. Dice, G. Green, W. Morgan, D. Utt, L. McQueen, J. Helm, Treasurer P. Sweeney, D. Zeikle, President L. McCollough. ROW ONE: R. Holman.

C. King, L. Caverty, Secretary M. Stevens, M. Duff, D. Hagerman, K. Hamby, S. Clawson, Vice-President J. McCollough.

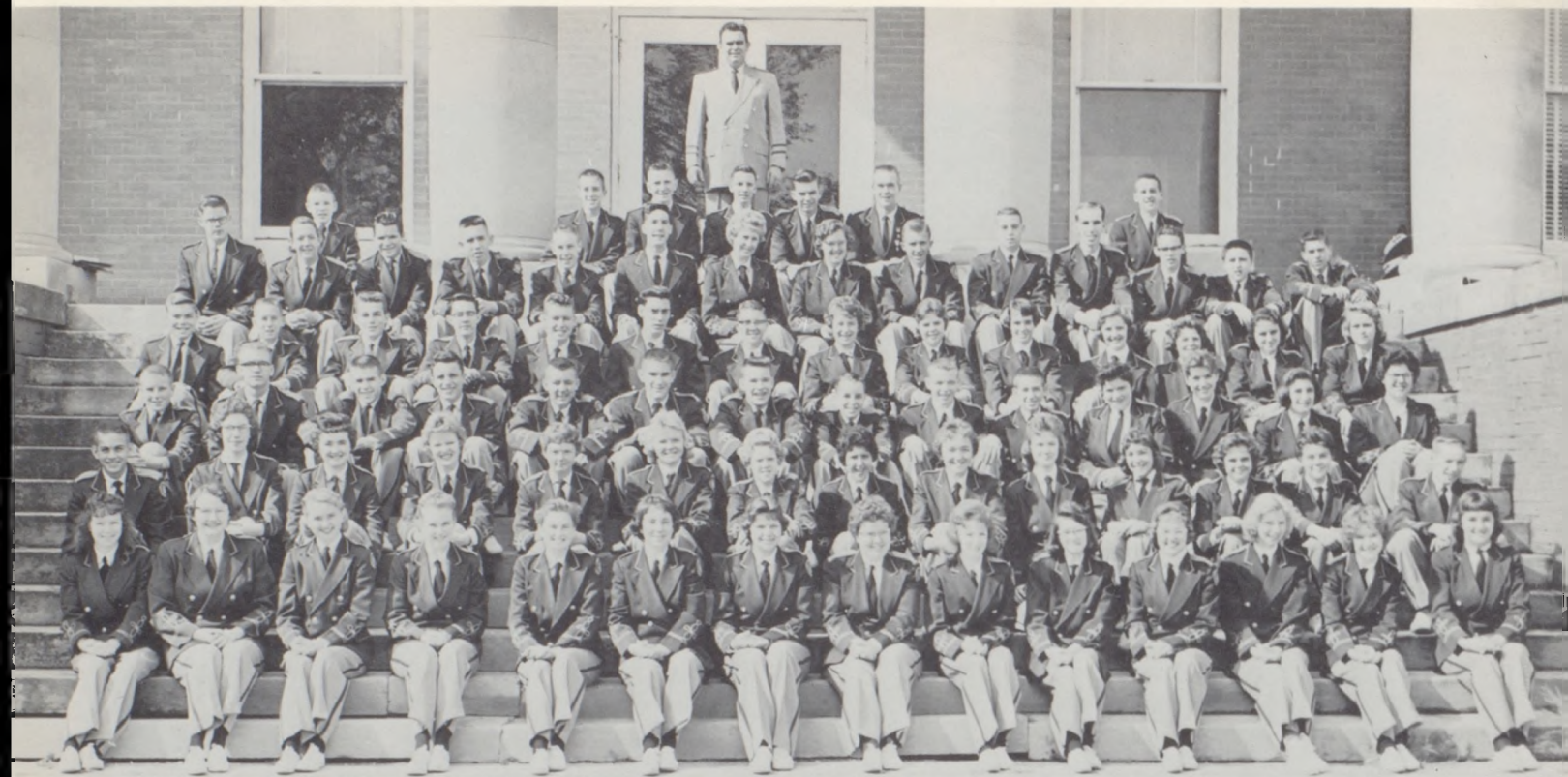
Art Club is for those who are interested in art. We hope to develop appreciation and creative ability in any phase of art that appeals most to the club members.



MR. D. BRADFORD
MR. J. SIMPSON



MRS. AKEY
MRS. MORRIS
MRS. OFFUTT



C.H.S. Band

FLUTES: Blanch Hedges, Jean Hartz, Sharon Stratton, Sherrie Wilhoit. **CLARINETS:** Carolyn Currell, Bonnie Fick, Brita Gilchrist, Dorie Hiatt, Carole Laughlin, Cate Sloan, Cissie Sweeney, Carole Wendt, Paula Phelps, Steve Robinson, Carol Caldwell, Sharon Lee, J. B. Beavers. Karen Morriss, Bob Parr, Gary Pierson. **OBOES:** Betty Burnett, Virginia Clark. **ALTO CLARINET:** Coralie Carson. **BASS CLARINETS:** Serita Clawson, Kathy Seifert. **BASSOONS:** Jayne Marquis, Carlotta Wood, Marian Ocker. **HORNS:** Gary Wages, Bob Wolff, Bill Blackwood, Paul Voris, Susan Carey, Alan Buck. **ALTO SAXOPHONES:** Mary Beth Kemper. Tom Parr, Karen Byers.

TENOR SAXOPHONES: Nicky Edwards, Jerry Place. **BARITONE SAXOPHONE:** Susie McCord. **BARITONE HORNS:** Paul Hutton, Judy Helm, Gary McElwain. **CORNETS:** Raymond Cathey, Gerald Green, Danny Silver, Billy Packham, Richard Bassett, Jennifer Connell, Jim Cook, Dorothy Munsell, Mike Robinson, Ray Bottorff. Rex Carnes, Russell Voris. **TROMBONES:** Julien McElwain, Trent Gann, Sharon Hughes, Darwin Newcom, Johnny Kemper, Gary Castle, Tom Hiatt, Joyce McQuerrey. **BASSES:** Jack Kessler, Bob Blackwood, Chris Vanderau, Philip Owen. **PERCUSSION:** Marvin Johnson, Linda Mattox, Janice Hamby, Don Estell, Jim Morgan.

This year the C.H.S. band was the clinic band at the Missouri Music Educators Association at Columbia, Missouri.

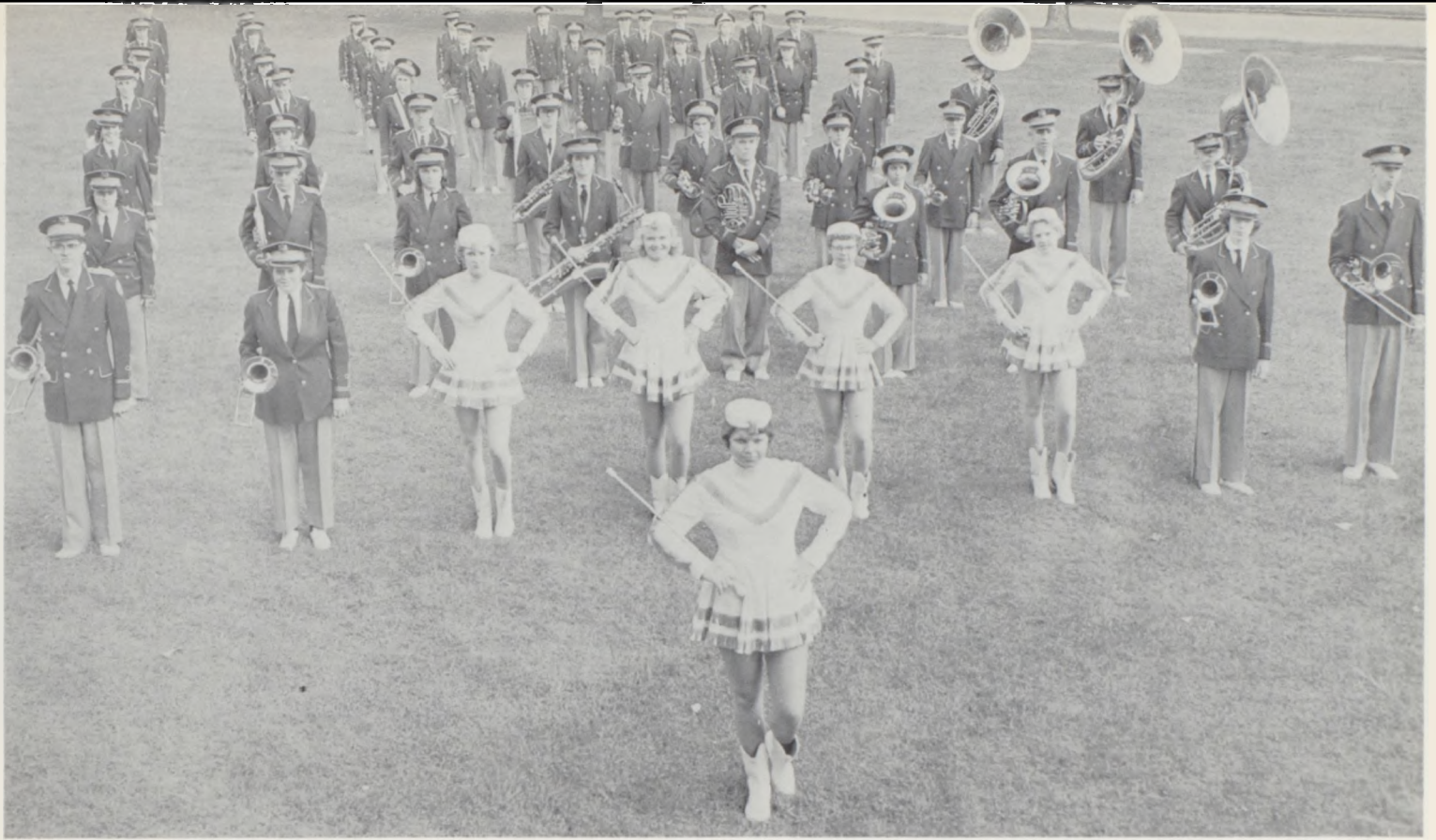


Band Director
THOMAS J. PRICE

BAND OFFICERS

President	C. Laughlin
Vice-President	P. Hutton
Secretary	S. McCord
Treasurer	P. Voris
Student Council	C. Carson





Marching Band



MAJORETTES: Susan Carey, Serita Clawson, Sharone Stratton, Karen Byers. DRUM MAJORETTE: Dorie Hiatt





Girls' Glee

ROW ONE: P. Whiteaker, L. Clevenger, J. Helm, S. Wilhoit, L. Luce, K. Keener, J. Utt, K. Morriss, M. Kennedy, V. Coffman, C. Wood, G. Conkle, J. McCord, Director Mr. Goodwin. ROW TWO: N. Whiteman, N. Zimmerman, B. Burnett, J. Fore, J. Kellerstrass, M. McColloch, J. Connell, M. Kemper, J. Hiatt, P. Foxworthy, S. Williams, N. Jenkins, B. Shaw. ROW THREE: L. Schnack, S.

Williams, V. Johnston, S. Hammontree, K. Byers, R. Dunn, K. Akey, J. McQuerrey, A. Allen, C. Jones. ROW FOUR: M. Shaw, S. Slater, J. Nelson, N. Richards, J. Gilmore, H. Ellwood, E. Posey, J. King, S. Johnston, B. Hedges, J. Hamby, S. Hughes, B. Hammontree, V. Seitz, P. Phelps, Pianist.

Girls' Trio

Sharon Johnson, Valera Coffman, Pat Whiteaker.



Boys' Quartet

Darrell Fore, Donnie Coffman, Chris Vanderau, Larry Collier.

Girls' Quartet

Judy Helm, Valera Coffman, Carlotta Wood, Janice Hamby.





Mixed Chorus

ROW ONE: B. Burnett, L. Clevenger, S. Wilhoit, J. Fore, L. Gates, J. Helm, N. Jenkins, J. McCord, V. Coffman, C. Woods, V. Coffman, K. Keener. ROW TWO: M. Kennedy, N. Zimmerman, L. Luce, J. Nelson, E. Posey, L. Schnack, V. Johnston, S. Slater, B.

Hammtree, S. Johnston, S. Hammtree, Mr. Goodwin, Sponsor. ROW THREE: J. Streu, D. Fore, D. Coffman, M. O'Neal, P. O'Connor, G. Beckett, J. Fore, C. Vanderau, P. Kinne, C. Clevenger, C. Jones, L. Collier.



Sextet

Lou Jean Schnack, Jean Fore, Judy King, Valerie Johnston, Janice Hamby, Karen Morriss.

Double Mixed Quartet

Sherrie Wilhoit, Linda Clevenger, Valerie Johnston, Mary Beth Kemper, Chris Vanderau, Jane Fore, Mike O'Neal, Donnie Coffman.

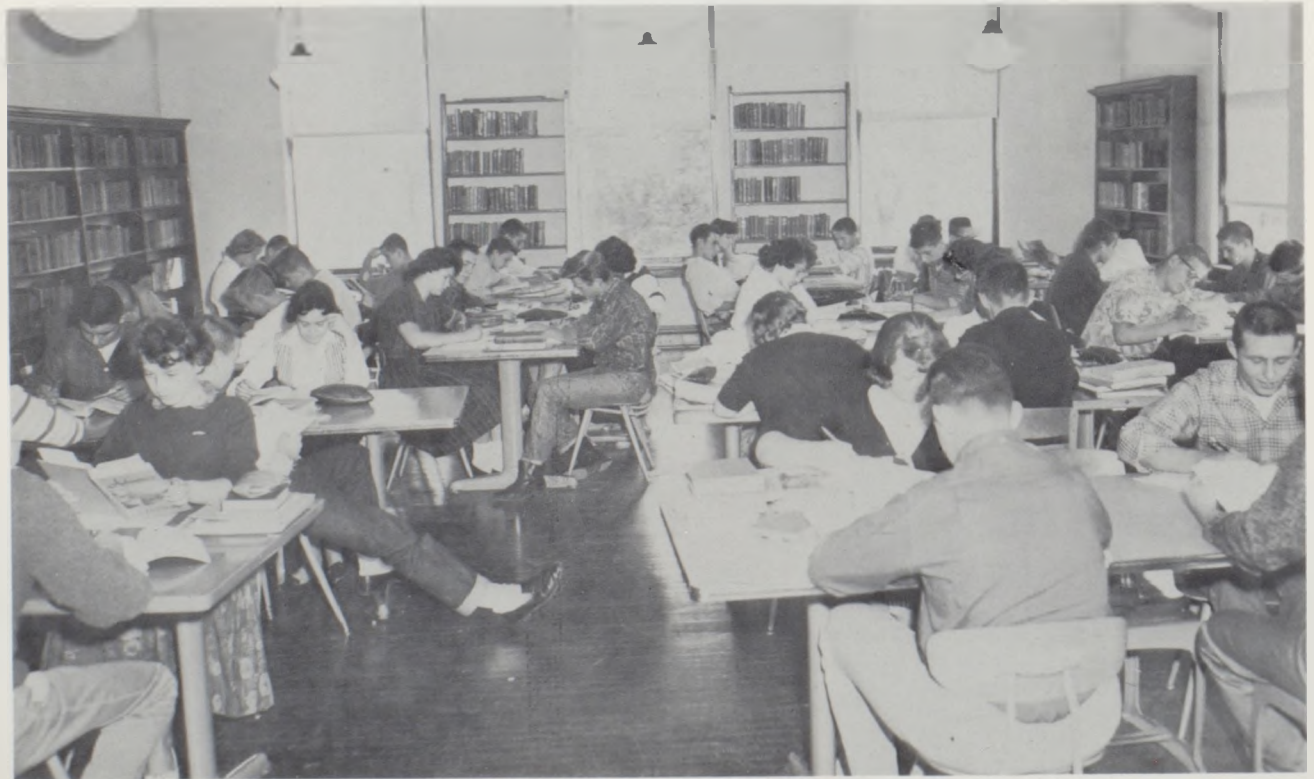
Madrigal

Joyce Nelson, Linda Gates, Jean Fore, Judy Helm, Karen Morriss, Sharon Johnston, Valerie Johnston, Judy King, Larry Collier, Jane Fore, Janice Hamby, Chris Vanderau, Jim Streu, Darrell Fore, Mike O'Neal, Donnie Coffman.





Library





Masque and Gavel initiation



How to Study



Pep Assembly Stunt



Meeting a deadline

Activity Snaps



F.H.A. Tea



N.H.S. Party



Time out for refreshments



We're from Cameron

Finale

The Publication Class sincerely thanks Mrs. Dritch, the teachers, and all the students for helping to make this year's annual a success.



